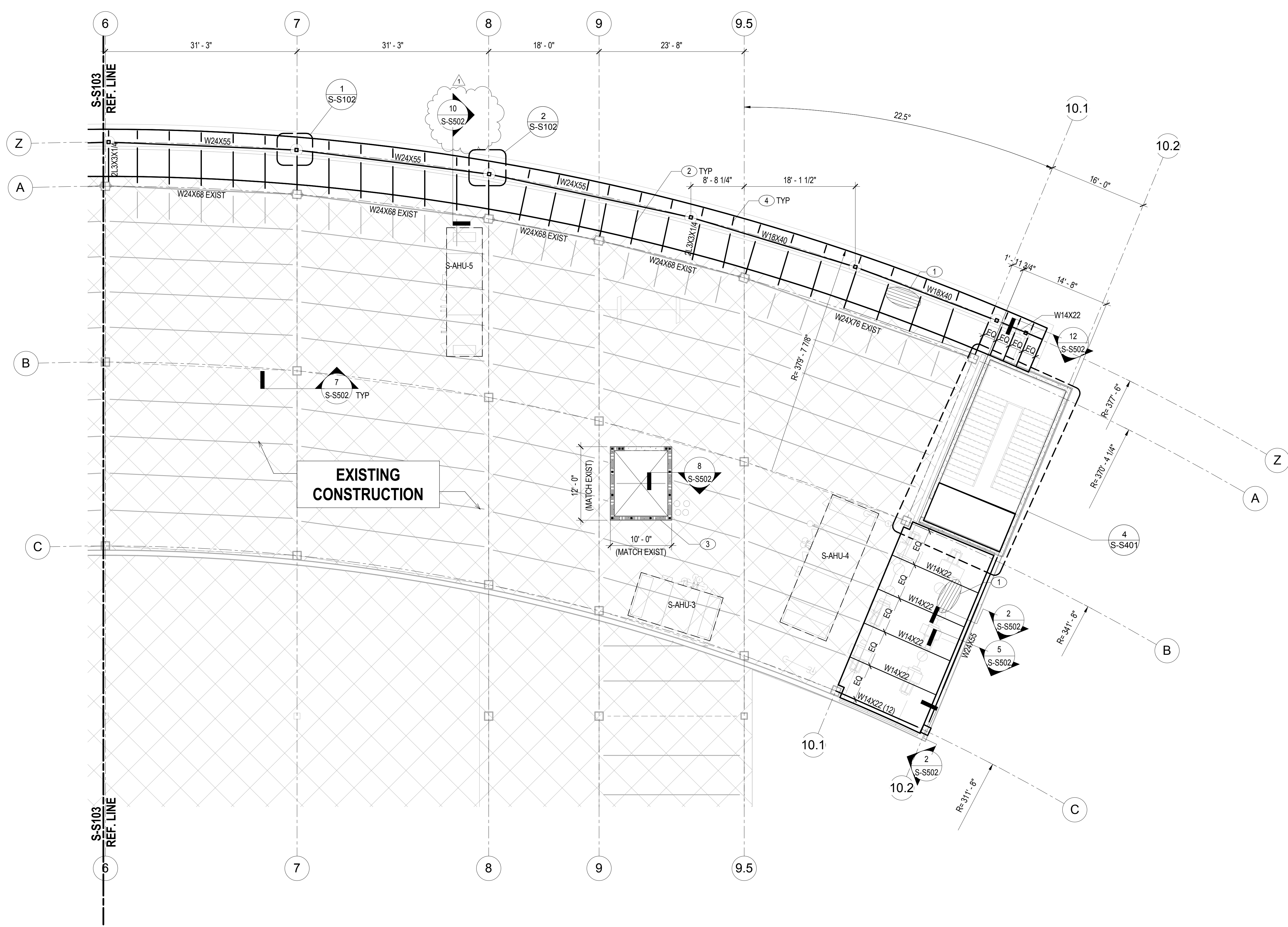
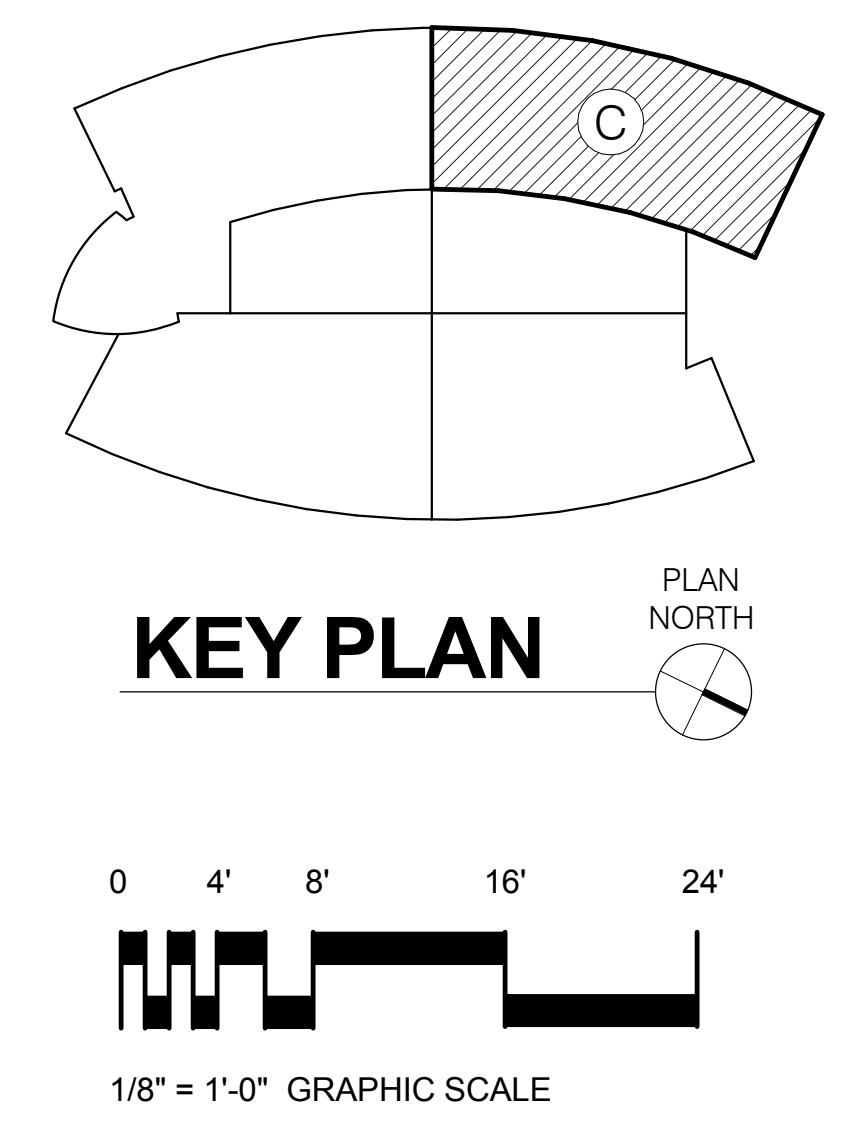
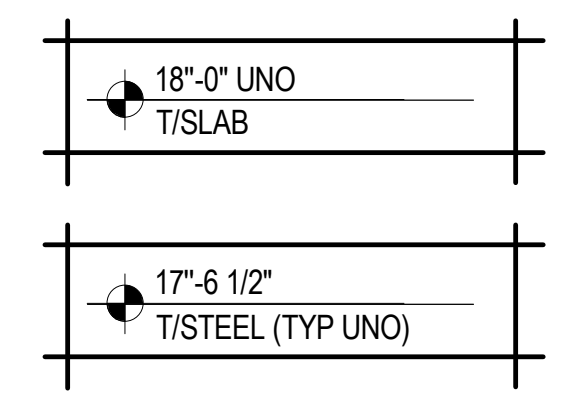



three inches = one foot  
one and one half inches = one foot  
one inch = one foot  
three quarters inch = one foot  
one half inch = one foot  
three eighths inch = one foot  
one quarter inch = one foot  
one eighth inch = one foot



- NOTES:**
- A. SEE S-001 SERIES FOR STRUCTURAL NOTES, ABBREVIATIONS AND SYMBOLS.
  - B. DIMENSIONS ARE TO COLUMN GRID, FACE OF MASONRY OR CONCRETE, OR CENTERLINE OF STRUCTURAL STEEL, UNO.
  - C. NUMBER IN PARENTHESIS AFTER BEAM/GIRDER SIZE INDICATES QUANTITY OF 3/4"DIA x 4" LONG SHEAR STUDS, SEE: 1/S601.
- KEY NOTES:**
- ① 3 1/2" CONCRETE SLAB OVER 2", 20 GA TYPE VL COMPOSITE STEEL DECK (5 1/2" TOTAL THICKNESS) REINF w/ 6x6 W2.1xW2.1 WWF.
  - ② W10x12 BEAMS @ 6'-0" OC. MAX TO MATCH EXISTING.
  - ③ 8" CMU WALL REINF w/ #6 VERT & MATCHING DOWEL IN GROUT FILLED CELL @ 48" OC. PROVIDE CONT HORIZ JOINT REINF @ 16" OC MAX. SEE MASONRY NOTES FOR ADDITIONAL REQUIREMENTS.
  - ④ 2L3x3x1/4 EACH SIDE.



<table><tr><th>No.</th><th>Description</th><th>Date</th></tr><tr><td>1</td><td>ADDENDUM #1</td><td>APRIL 7, 2017</td></tr><tr><td> </td><td> </td><td> </td></tr><tr><td> </td><td> </td><td> </td></tr><tr><td> </td><td> </td><td> </td></tr><tr><td> </td><td> </td><td> </td></tr><tr><td> </td><td> </td><td> </td></tr><tr><td> </td><td> </td><td> </td></tr><tr><td> </td><td> </td><td> </td></tr><tr><td> </td><td> </td><td> </td></tr><tr><td> </td><td> </td><td> </td></tr></table>			No.	Description	Date	1	ADDENDUM #1	APRIL 7, 2017																												<div>CONSULTANTS:</div> <div><div><div><div><div>TLC</div><div>ENGINEERING</div><div>FOR ARCHITECTURE</div></div><div>255 S. Orange Avenue Suite 1600 Orlando, FL 32801 Phone: 407-841-9050 Fax: 407-425-7367 www.tlc-engineers.com ©Copyright 2014 TLC Engineering for Architecture, Inc. COA 15      TLC NO: 114714</div></div></div><div>Carl W. Jenne, P.E. State of Florida Professional Engineer License No. 54036  This item has been electronically signed and sealed by the individual named above, using a dated Digital Signature in the space below, per F.A.C. Rule 61G15-23.004. Printed copies of this document are not considered signed and sealed, and the signature must be verified on any electronic copies.</div></div>		<div>ARCHITECT/ENGINEERS:</div> <div><div><div><div>AKEA</div><div>INC.</div></div><div>3603 NW 98th Street, Suite B Gainesville, FL 32606 Phone: (352) 474-6124 Fax: (352) 553-4437 AKEA Project No. 039-12</div></div></div>		<div><div><div>Drawing Title</div><div>LEVEL 2 AREA C FRAMING PLAN</div></div><div><div>Approved: Project Director</div></div></div> <div><div><div>Project Title</div><div>VAMC AT LAKE NONA BUILD NEW RESEARCH SPACE</div></div><div><div>Location</div><div>Orlando, Florida</div></div><div><div><div>Date</div><div>JUNE 17, 2016</div></div><div><div>Checked</div><div>CWJ</div></div><div><div>Drawn</div><div>VPF</div></div></div></div> <div><div><div>Project Number</div><div>675-900</div></div><div><div>Building Number</div><div>13</div></div><div><div>Drawing Number</div><div>S-S104</div></div></div>		<div>Office of Construction and Facilities Management</div> <div></div>	
No.	Description	Date																																									
1	ADDENDUM #1	APRIL 7, 2017																																									