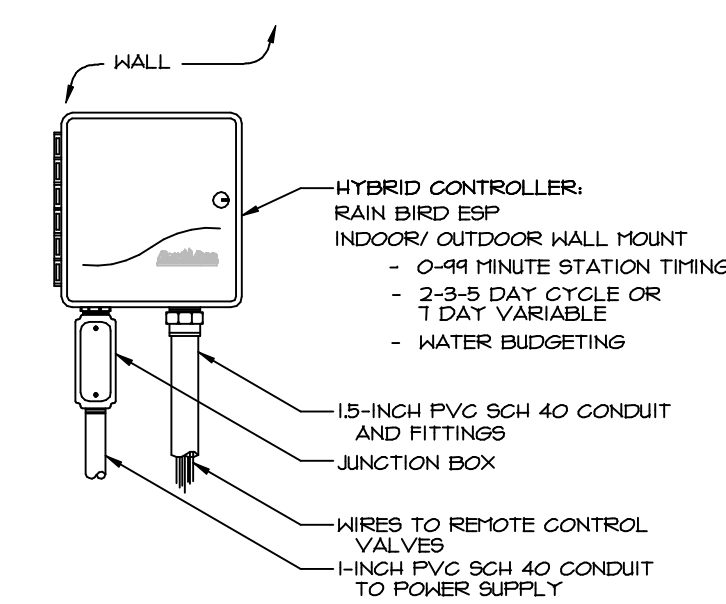
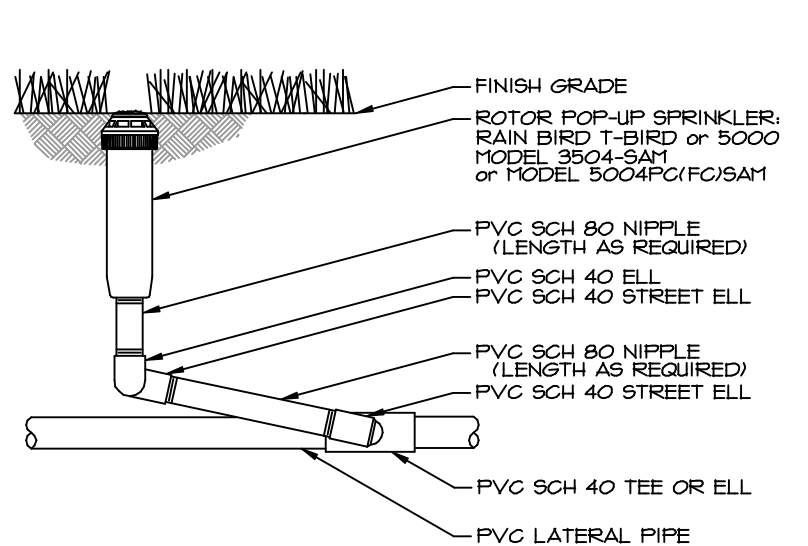


three inches = one foot
one and one half inches = one foot
one inch = one foot
three quarters inch = one foot
one half inch = one foot
three eighths inch = one foot
one quarter inch = one foot
one eighth inch = one foot



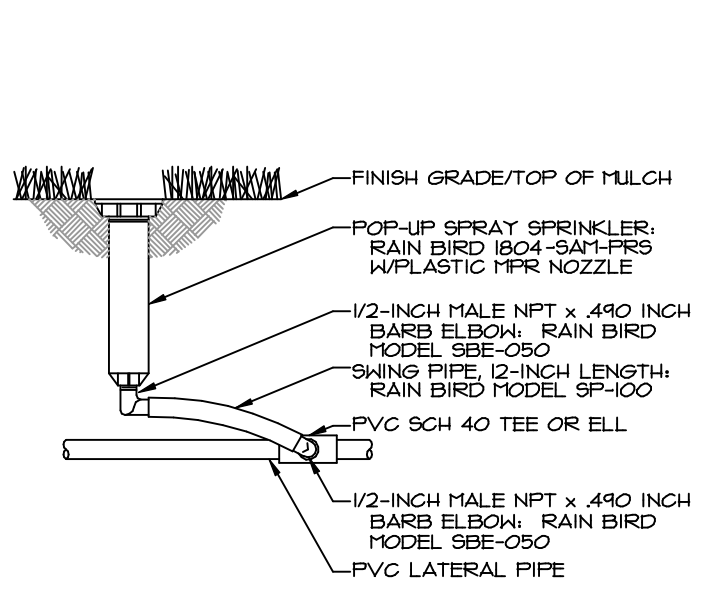
RAIN BIRD CONTROLLER

HYBRID TYPE CONTROLLER THAT COMBINES ELECTROMECHANICAL AND MICRO-ELECTRONIC CIRCUITRY. FOUR PROGRAMS (A,B,C, AND D), DRIP CAN RUN CONCURRENTLY WITH PROGRAMS A,B, OR C BUT A, B, AND C PROGRAMS ARE STAGGERED. WATER BUDGET 0-2000 PPS. PROGRAM 365 DAY CALENDAR. SELECT MASTER VALVE/ PUMP START (ON/OFF PER STATION). DIAGNOSTIC CIRCUIT BREAKER AND STATION FAULT INDICATOR LIGHT. SENSOR SYSTEM OVERRIDE AND SENSOR ACTIVITY LIGHT. ELECTRICAL BURST PROTECTION (INPUT AND OUTPUT). STAGGERED AND STACKED TERMINAL STRIPS. OUTDOOR KEY LOCKABLE CABINET.

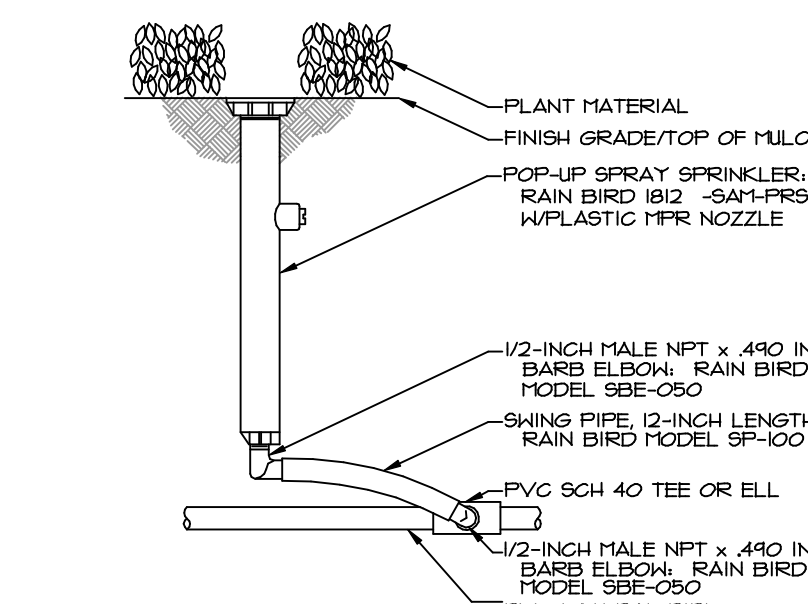


TURF 4" POP-UP SMALL/MID-RANGE ROTOR

POP-UP SPRAY TYPE WITH PRESSURE ACTIVATED GO-HOLDED. WATER SEAL WITH 225 GPM FLOW-BY 0-8 PSI. 0 FLOW-BY AT 8 PSI OR GREATER. RATCHET CAPABILITY (FOR EASY NOZZLE ALIGNMENT). INTERCHANGEABLE NOZZLES THAT ARE MATCHED PRESCRIPTION RATE (PPR) ACROSS SETS AND ACROSS PATTERNS. (31 PPR PLASTIC NOZZLES AND 15 PPR BRASS NOZZLES). SEAL-A-MATIC (SAM) CAPABILITY OF HOLDING UP TO 8 FEET OF HEAD. PRESSURE REGULATING (PRS) NOT PRESSURE COMPENSATING. REGULATES NOZZLE PRESSURE TO AN AVERAGE OF 30 PSI WITH INLET PRESSURES UP TO 175 PSI. BUILT-IN STEEL REGULATOR PROVIDES FLOW RESTRICTION WHICH CUTS WATER LOSS BY UP TO 10% IF NOZZLE IS REMOVED OR DAMAGED.

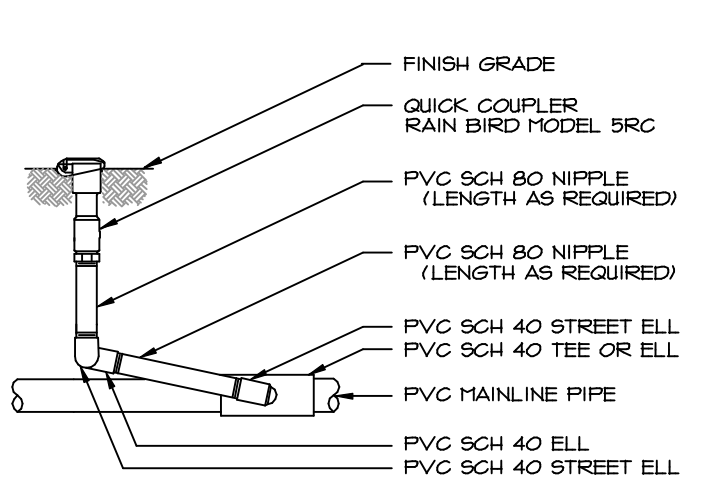


4" POP-UP SPRAY SPRINKLER

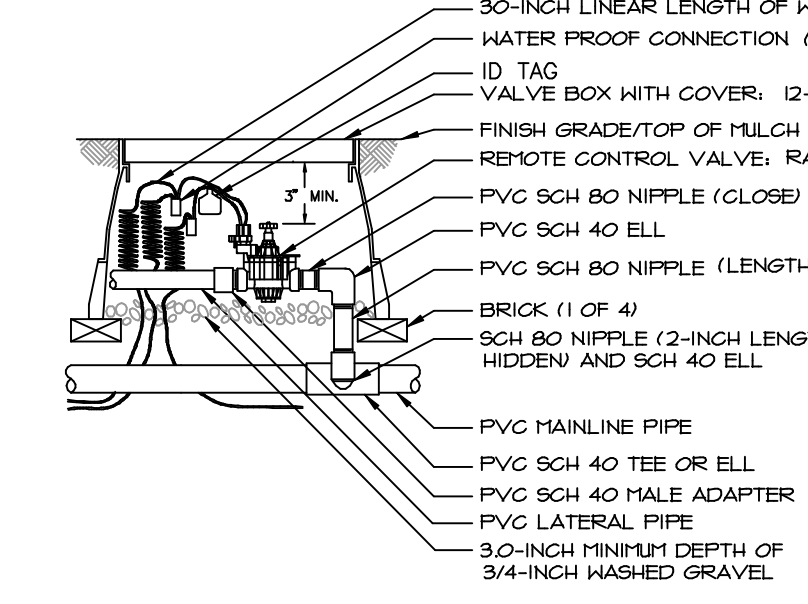


12" POP-UP SPRAY SPRINKLER

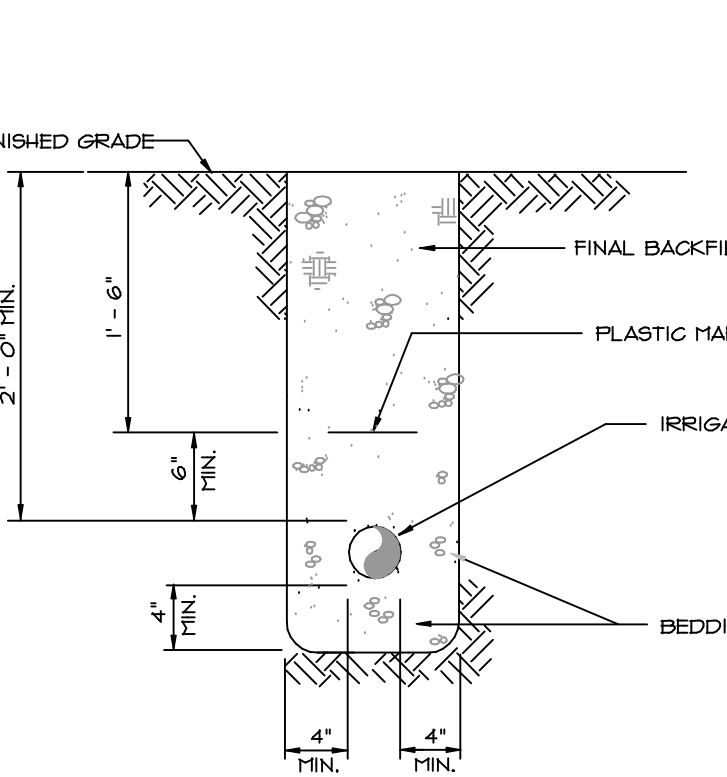
POP-UP SPRAY TYPE WITH PRESSURE ACTIVATED GO-HOLDED. WATER SEAL WITH 225 GPM FLOW-BY 0-8 PSI. 0 FLOW-BY AT 8 PSI OR GREATER. RATCHET CAPABILITY (FOR EASY NOZZLE ALIGNMENT). INTERCHANGEABLE NOZZLES THAT ARE MATCHED PRESCRIPTION RATE (PPR) ACROSS SETS AND ACROSS PATTERNS. (31 PPR PLASTIC NOZZLES, 15 PPR BRASS NOZZLES). SEAL-A-MATIC (SAM) CAPABLE OF HOLDING UP TO 8 FEET OF HEAD. PRESSURE REGULATING (PRS) NOT PRESSURE COMPENSATING. REGULATES NOZZLE PRESSURE TO AN AVERAGE OF 30 PSI WITH INLET PRESSURES UP TO 175 PSI. BUILT-IN STEEL REGULATOR PROVIDES FLOW RESTRICTION WHICH CUTS WATER LOSS BY UP TO 10% IF NOZZLE IS REMOVED OR DAMAGED. USE BOTTOM INLET ONLY.



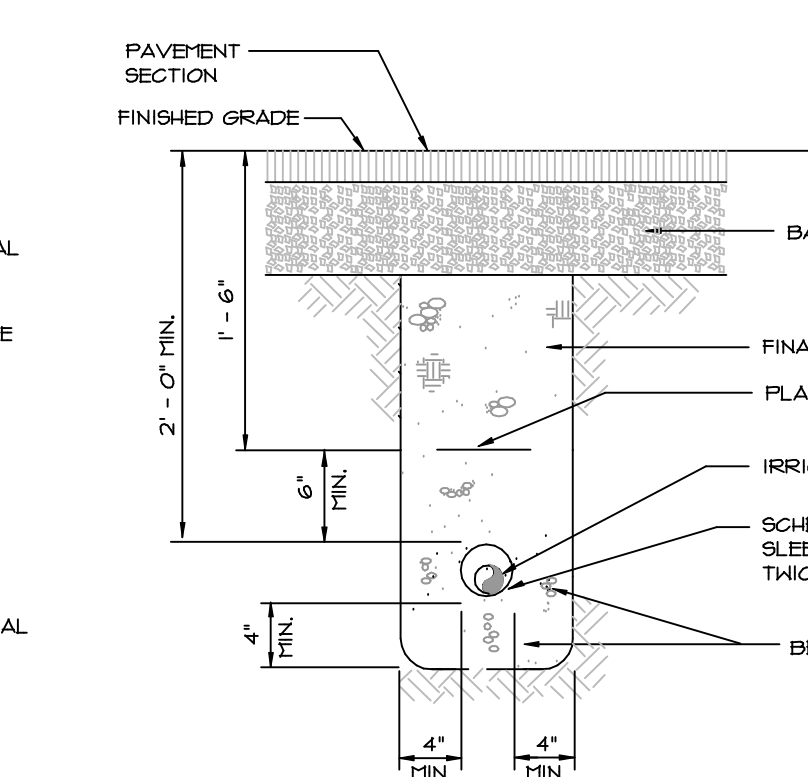
1" QUICK COUPLING VALVE



RAIN BIRD PGA CONTROL VALVE



TRENCH IN LAWN AREA



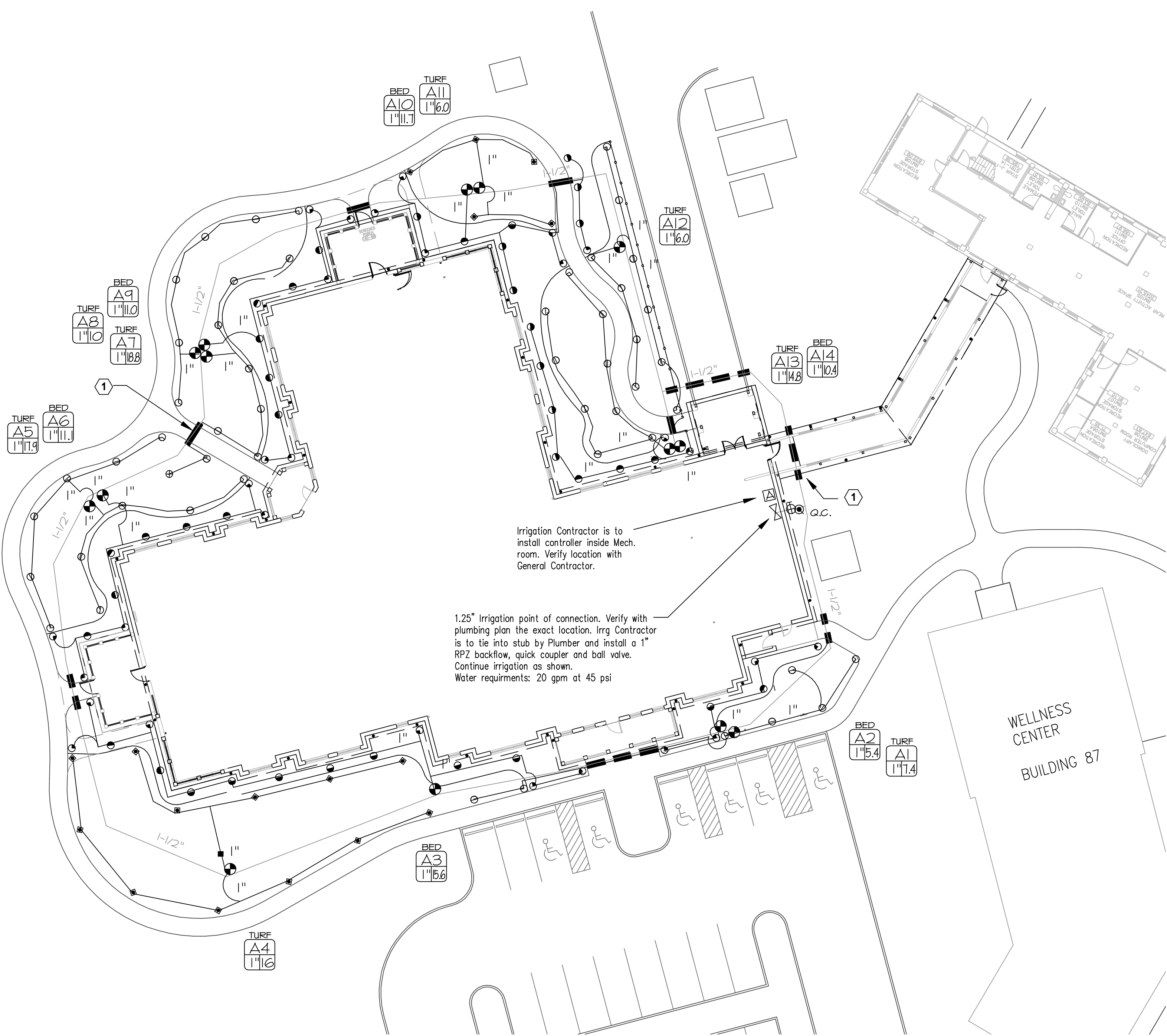
TRENCH UNDER PAVEMENT

Irrigation Equipment Table

Quantity	Symbol	Equipment
14	⊙	Zone Valve
1	⊕	Manual Valve
1	⊞	BACKFLOW
1	⊕	Quick Couple Valve
1	⊞	Control Box

Irrigation Heads Table

Quantity	Symbol	Sprinkler Heads
38	⊙	RAINBIRD 1812 SERIES-PPR 12 series 180
28	⊙	RAINBIRD 1812 SERIES-PPR 12 series 040
1	⊕	RAINBIRD 3504 MINI ROTOR .75 360
17	⊕	RAINBIRD 3504 MINI ROTOR .75 ADJ
30	⊙	RAINBIRD 1804 SERIES 15 Series trajectory 30 deg 180
12	⊙	RAINBIRD 1804 SERIES 15 Series trajectory 30 deg 040
2	⊙	RAINBIRD 1804 SERIES 15 Series trajectory 30 deg 240
2	⊙	RAINBIRD 1804 SERIES 15 Series trajectory 30 deg 120
1	⊕	RAINBIRD 1804 SERIES 15 Series trajectory 30 deg 360



SHEET NOTES

1 4" SOLID PVC SLEEVE FURNISHED AND PLACED UNDER PAVEMENT BY IRRIGATION CONTRACTOR. COORDINATE WITH GENERAL CONTRACTOR.

GENERAL IRRIGATION REQUIREMENTS

THIS SYSTEM IS DIAGNOSTIC ONLY. THE SUCCESSFUL CONTRACTOR IS RESPONSIBLE TO INSTALL A SYSTEM THAT WILL PROPERLY COVER ALL AREAS INDICATED ON THE DESIGN. ANY DISCREPANCIES SHOULD BE SUBMITTED TO THE ARCHITECT FOR APPROVAL. THIS SYSTEM SHOULD BE INSTALLED USING ACCEPTED AND QUALITY INSTALLATION STANDARDS AS USED IN THE INDUSTRY. ALL MANUFACTURER SPECIFICATIONS WILL BE FOLLOWED. MAINLINE PIPING SHALL BE BURIED WITH A MINIMUM OF 18" OF COVER AND A MINIMUM OF 24" OF COVER. LATERAL LINE PIPING SHALL HAVE MINIMUM OF 12" COVER. ALL BACKFIELD SURROUNDING THE PIPE SHALL BE SCREENED AND CLEARED OF MATERIAL LARGER THAN 1" IN SIZE. BACK FILL SHALL BE ADDED IN 6" INCREMENTS AND MECHANICALLY TAPPED. SYSTEM REQUIREMENTS ARE 15 GPM @ 15 PSI AT POINT OF CONNECTION. PRESSURE REQUIREMENTS ARE 45 PSI THROUGH THE ROTARY REGULATOR. PIPING SHALL BE 1" PVC PIPE UNLESS OTHERWISE NOTED. UNMARKED PIPING SHALL BE 1" PVC PIPE UNLESS OTHERWISE NOTED. ALL VALVES SHALL BE IN ARETIC VALVE BOXES OR APPROVED EQUAL. ALL ELECTRICAL CONNECTIONS AND SPLICES SHALL BE SEALED WITH WATERPROOF CONNECTIONS. THE IRRIGATION SYSTEM IS DESIGNED UTILIZING BRANDS AS NOTED. SHOULD THE IRRIGATION CONTRACTOR DESIRE TO SUBSTITUTE AN "APPROVED EQUAL", IT SHALL BE HIS RESPONSIBILITY TO PROVIDE AN IRRIGATION PLAN COMPLETE, SHOWING MANUFACTURER'S HEAD TYPES AND LOCATIONS, VALVES, PIPE SIZES ETC. INCLUDING ALL NECESSARY SUBSTANTIATING TECHNICAL DATA TO THE ARCHITECT FOR OWNER'S REVIEW AND APPROVAL. IRRIGATION PRODUCTS (IE: SPRINKLERS, VALVES, CONTROLLERS) SHALL BE BY A SINGLE MANUFACTURER. ALL OTHER COMPONENTS SHALL BE FURNISHED BY A SINGLE SOURCE SUPPLIER. ALL IRRIGATION SYSTEM COMPONENTS SHALL BE SUPPLIED BY REGIONALLY AUTHORIZED DISTRIBUTOR TO PROVIDE SINGLE SOURCE RESPONSIBILITY FOR WARRANTY & SERVICE OPERATIONS TO CONFORM TO SPECIFICATIONS IN ALL RESPECTS. CONTROL WIRE SHALL BE SOLID COPPER WIRE ULL APPROVED FOR BURIAL IN GROUND. THINNET GAUGE #14 U/L. 100 U/L FOR RUNS OVER 1000 U/L. COMMON GROUND WIRE SHALL BE WHITE. USE SEPARATE COMMON WIRE FOR EACH IRRIGATION CONTROLLER.

LEGEND

- PVC CLASS 200 MAINLINE
- PVC CLASS 200 LATERAL PIPE
- PVC SCH 40 SLEEVE UNDER PAVEMENT, HALKS
- RAINBIRD ESP 1/4" MODULAR CONTROLLER
- RAINBIRD 1" PFA-100 ELECTRIC VALVE
- RAINBIRD 1804 4" POP UP SPRAY
- RAINBIRD 1812 12" POP UP SPRAY
- RAINBIRD 3504 MINI ROTOR
- RAINBIRD 1" QUICK COUPLER VALVE WITH 1/2 KEY AND 1/2 HOSE SWIVEL
- MANUAL VALVE
- IRRIGATION POINT OF CONNECTION
- VALVE FOR LANDSCAPE ZONE # ZONE SIZE 1" 1/2 12 GPM
- VALVE FOR TURF ZONE # ZONE SIZE 1" 1/2 12 GPM

Matrix Architects
249 Wayne Avenue, Dayton, Ohio 45402
Telephone: (937) 224-7700 Fax: (937) 224-7125

Matrix Project No. 09104

Consultant

YELLOW SPRINGS DESIGN, LLC
830 XENIA AVENUE
YELLOW SPRINGS, OHIO 45381
VOICE/ FAX 937.367.8899
yellowspringsdesign@bvaohio.com

F1 IRRIGATION DETAILS

NTS

REVISION NO.	REVISION DESCRIPTION

Revisions By Date

Department of Veterans Affairs
Medical Center
1826 Veterans Blvd.
Dublin, Ga. 31021

F4 IRRIGATION PLAN

1"=20'

SEAL

M. Smith ENGINEERING, LLC
155 CLARKSVILLE STREET
CORNELIA, GEORGIA 30531
TEL (678) 287-3690
LOCAL (706) 894-2331
FAX (678) 287-3731
www.jmsmithengineering.com

Recommended Approvals:

1. MEDICAL DIRECTOR	6. OPERATIONS SERVICE LINE
2. ASSOCIATE DIRECTOR	7. INFECTION CONTROL
3. CHIEF OF STAFF	8. SAFETY MANAGER
4. ASSOC. DIRECTOR	9. GENERAL ENGINEER
5. SERVICE LINE MGRS.	10. COTR

Drawing Title
IRRIGATION PLAN

Submittal:
CONSTRUCTION BID DOCUMENTS

Job Number
2008-050-01

Project Title
VA HOSPICE CARE UNIT

Drawn
REB/MAH

Building Number
86

AutoCAD File Name
567.375.22.TB

Checked
REB

Reviewed
REB

Const. Contract

Date
09/09/10

Project Number
557-CS1-375

DRAWING No.
L102

Dwg. Of

Veterans Affairs