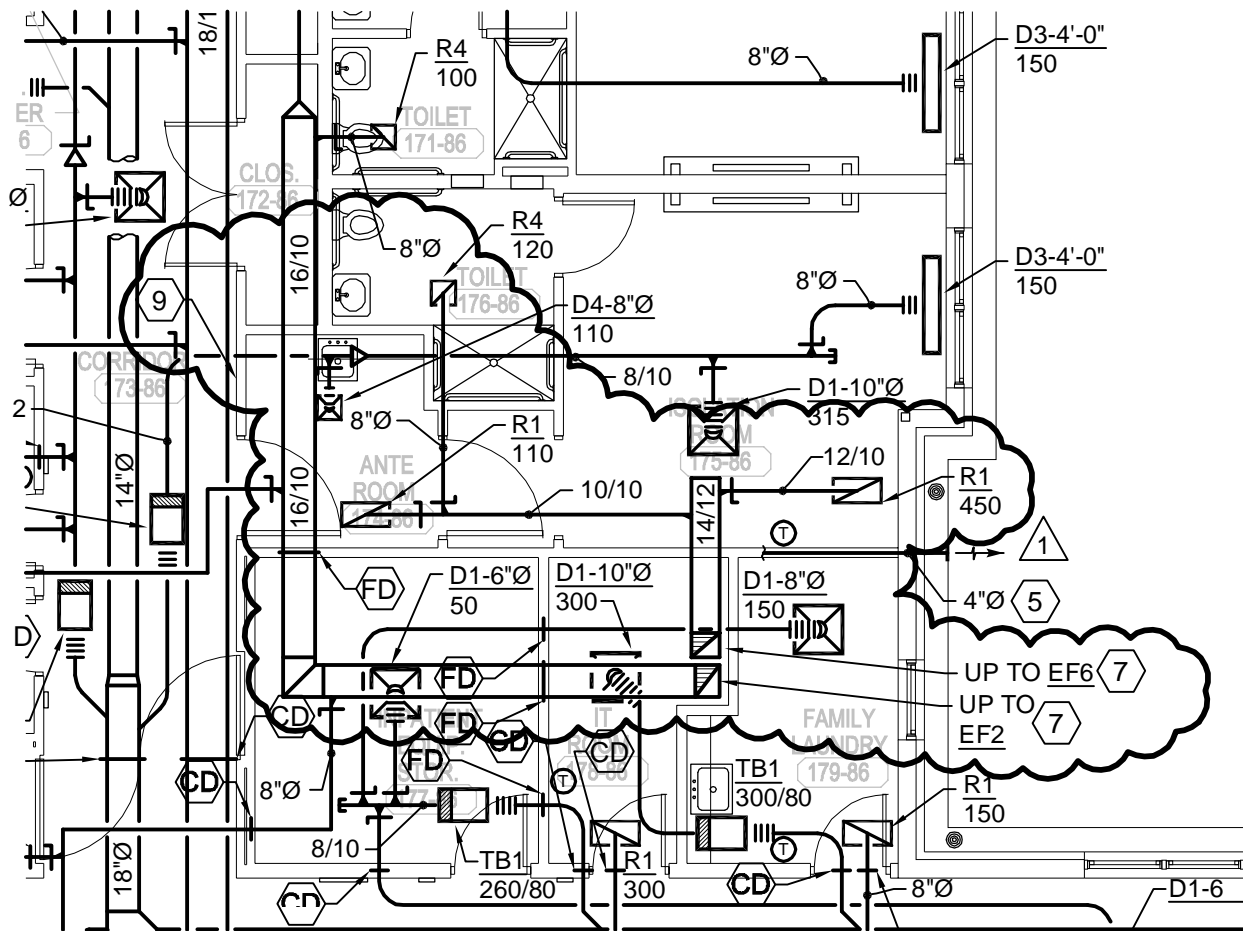


		SHEET TITLE		SHEET NO.	
		HVAC PLAN		SKH-01	
DRAWN BY		PROJECT		REF. DETAIL/SHEET	
WPS		VA HOSPICE CARE UNIT		A/H201	
CHECKED BY		CARL VINSON VA MEDICAL CENTER		SCALE	
WPS		1828 VETERANS BOULEVARD, DUBLIN, GEORGIA 31021		1/8"=1'-0"	
Matrix Architects		PROJECT NO.	DATE	REVISION	
		557-CSI-375	03/08/2012	ADDN. NO. 1	
		© 2012 Matrix Architects Incorporated			



		SHEET TITLE			SHEET NO.	
		HVAC PLAN				
DRAWN BY WPS		CHECKED BY WPS		PROJECT		REF. DETAIL/SHEET
				VA HOSPICE CARE UNIT CARL VINSON VA MEDICAL CENTER 1826 VETERANS BOULEVARD, DUBLIN, GEORGIA 31021		
Matrix Architects		PROJECT NO.	DATE	REVISION	SCALE	
		557-CSI-375	03/08/2012	ADDN. NO. 1	1/8"=1'-0"	
© 2012 Matrix Architects Incorporated						

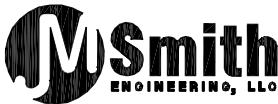
FAN SCHEDULE

- (1) FAN TO BE ON EMERGENCY POWER.
 (2) INCLUDE MEDIUM BELT LOSSES IN SELECTION FOR SUBMITTAL

KEY: CENT.-CENTRIFUGAL, PROP.-PROPELLER, F.C.-FORWARD CURVED, B.I.-BACKWARD INCLINED, A.F.-AIRFOIL, A.T.L.-ACROSS THE LINE, P.W.-PART WINDING, A.T.-AUTO TRANSFORMER

TAG	LOCATION	FUNCTION	FAN TYPE	UNIT DATA						MOTOR DATA				SOUND RATING IN SONES	INDICATED COMPONENTS PROVIDED BY		REMARKS
				WHEEL TYPE	TOTAL S.P. "W.G.	CFM	RPM	TYPE OF DRIVE	TYPE OF DAMPER	HP	RPM	VOLTS	PHASE		M.C.	F.C.	
EF1	ATTIC	RR EXHAUST	INLINE	CENT	0.75	620	1238	BELT	GRAVITY	1/4	1750	120	1	9.2	(A)	(D)	(1)(2)
EF2	ATTIC	RR EXHAUST	INLINE	CENT	0.75	780	1263	BELT	GRAVITY	1/3	1750	120	1	9.7	(A)	(D)	(1)(2)
EF3	ATTIC	RR EXHAUST	INLINE	CENT	0.50	90	1615	BELT	GRAVITY	1/6	1750	120	1	7.5	(B)	(D)	(1)(2)
EF4	ATTIC	ATTIC EXHAUST	INLINE	CENT	0.25	450	1300	DIRECT	GRAVITY	1/4	1750	120	1	4	(B)	(D)	(1)
EF5	ATTIC	ISOLATION EXHAUST	INLINE	CENT	0.75	745	1255	BELT	GRAVITY	1/3	1750	120	1	9.5	(A)	(D)	(1)(2)
EF6	ATTIC	ISOLATION EXHAUST	INLINE	CENT	0.75	680	1244	BELT	GRAVITY	1/4	1750	120	1	9.3	(A)	(D)	(1)(2)
RAF1	MECHANICAL ROOM	AH EXHAUST	HOUSED	CENT	1.50	2430	707	BELT	MOTORIZED	7.5	1725	208	3	-	(A)(G)	(D)	INTERLOCK WITH AHU1 (1)

CODED NOTES:
 (D) = DISCONNECT SWITCH
 (A) = CONTROL PANEL WITH INTEGRAL DISCONNECT SWITCH
 (B) = CONTROL PANEL
 (E) = LINE VOLTAGE STARTER
 (F) = TWO SPEED STARTERS
 (G) = VARIABLE FREQUENCY DRIVE
 (H) = EMERGENCY POWER
 (I) = PLUG-IN UNIT
 (J) = THERMOSTAT
 (K) = WALL SWITCH



DRAWN BY
WPS

CHECKED BY
WPS

Matrix Architects

SHEET TITLE

HVAC SCHEDULS

PROJECT

VA HOSPICE CARE UNIT
CARL VINSON VA MEDICAL CENTER
1826 VETERANS BOULEVARD, DUBLIN, GEORGIA 31021

PROJECT NO.

557-CSI-375

DATE

03/08/2012

REVISION

ADDN. NO. 1

© 2012 Matrix Architects Incorporated

SHEET NO.

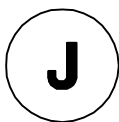
SKH-03

REF. DETAIL/SHEET

H501


SCALE

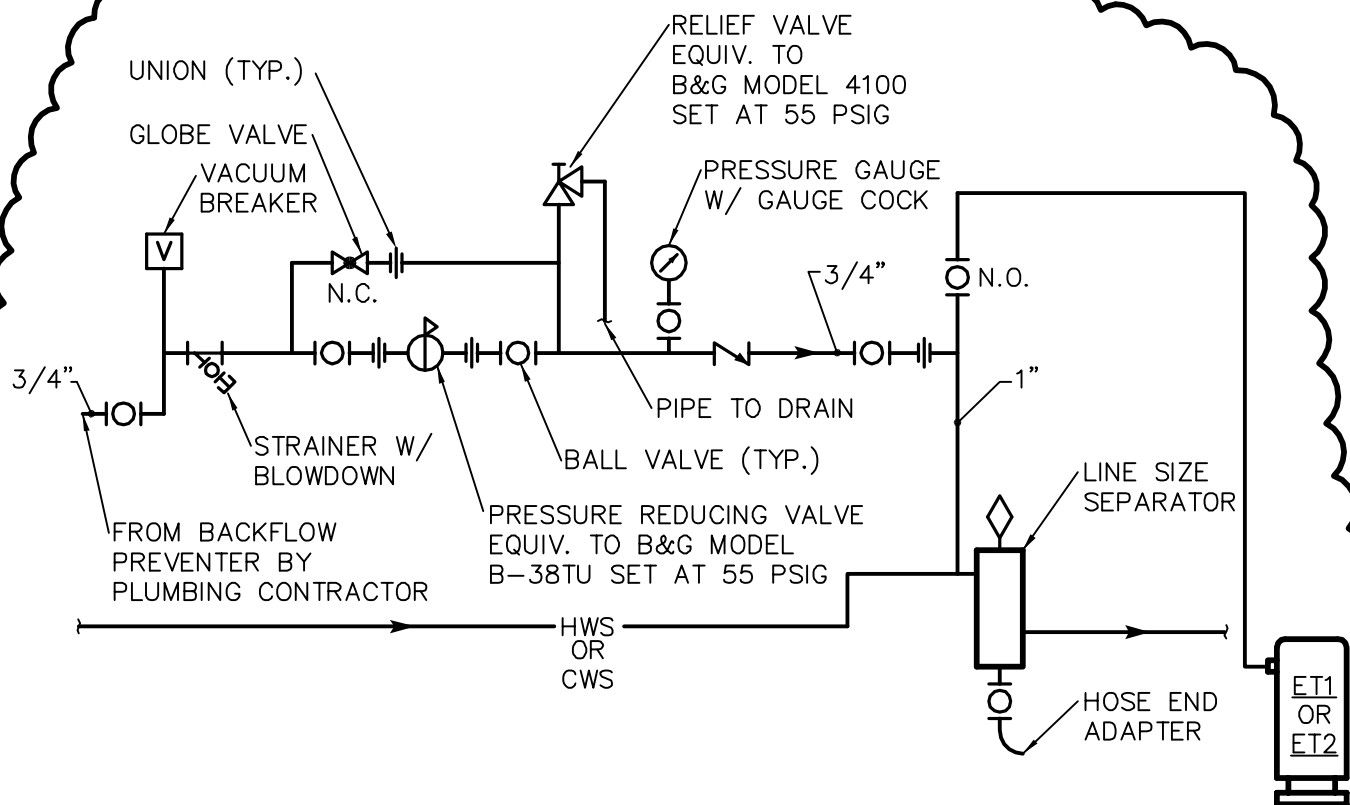
NONE



DORMER EXHAUST DETAIL

1

		SHEET TITLE			SHEET NO.	
		HVAC DETAILS				
DRAWN BY WPS		CHECKED BY WPS		PROJECT		REF. DETAIL/SHEET
				VA HOSPICE CARE UNIT CARL VINSON VA MEDICAL CENTER 1826 VETERANS BOULEVARD, DUBLIN, GEORGIA 31021		
Matrix Architects		PROJECT NO.	DATE	REVISION	SCALE	
		557-CSI-375	03/08/2012	ADDN. NO. 1	NONE	
© 2012 Matrix Architects Incorporated						



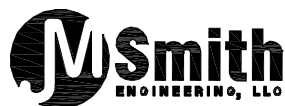
D

DETAIL

MAKE-UP WATER & EXPANSION TANK PIPING
(HOT AND CHILLED WATER SYSTEMS)

N.T.S.

1



DRAWN BY
WPS

CHECKED BY
WPS

Matrix Architects

SHEET TITLE

HVAC DETAILS & SCHEMATICS

PROJECT

VA HOSPICE CARE UNIT
CARL VINSON VA MEDICAL CENTER
1828 VETERANS BOULEVARD, DUBLIN, GEORGIA 31021

PROJECT NO.

557-CSI-375

DATE

03/08/2012

REVISION

ADDN. NO. 1

© 2012 Matrix Architects Incorporated

SHEET NO.

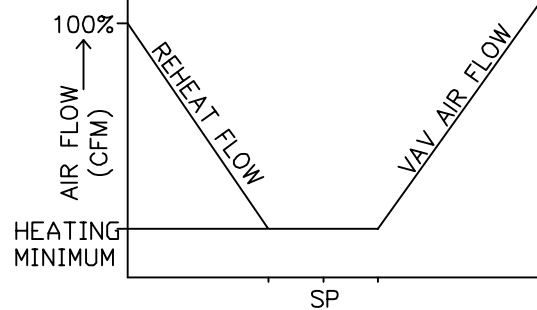
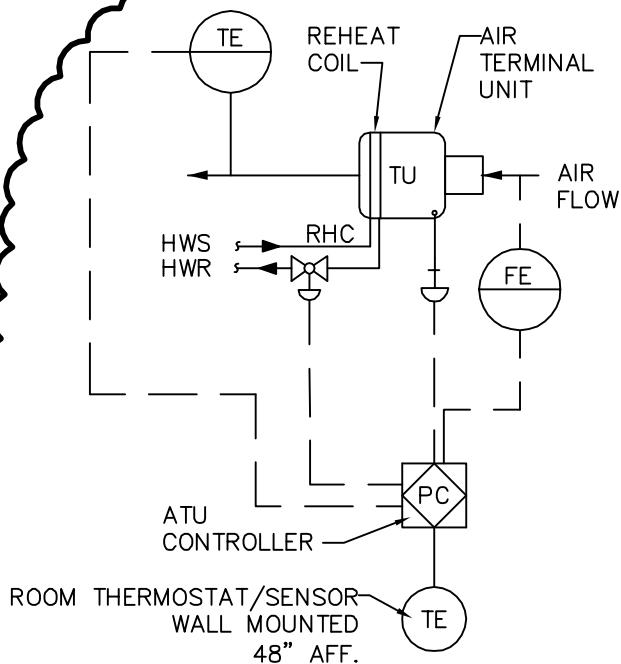
SKH-05

REF. DETAIL/SHEET

D/H603

SCALE

NONE



VAV BOX CONTROL SEQUENCE

W/DEADBAND

- A. SET POINTS SHALL BE SET AS FOLLOWS:
 COOLING 75°F (ADJ)
 HEATING 70°F (ADJ)
 DEADBAND OF 5° F BETWEEN HEATING AND COOLING SET POINTS WILL BE MAINTAINED.
- B. UPON FALL IN SPACE TEMPERATURE THE VAV DAMPER WILL MODULATE TO MINIMUM POSITION.
- C. UPON FURTHER DROP IN SPACE TEMPERATURE VALVE WILL MODULATE TO MAINTAIN SET POINT $\pm .5^\circ$ F. THE ADJUSTABLE TOLERANCE OF $\pm .5^\circ$ F HAS BEEN SELECTED TO PREVENT VALVE HUNTING
- D. THE REVERSE SHALL OCCUR ON THE RISE IN SPACE TEMPERATURE.

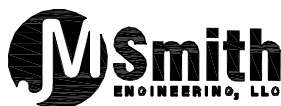
K

DIAGRAM

VARIABLE VOLUME AIR TERMINAL UNIT CONTROL

N.T.S.

2



DRAWN BY
WPS

CHECKED BY
WPS

Matrix Architects

SHEET TITLE

HVAC DETAILS & SCHEMATICS

PROJECT

VA HOSPICE CARE UNIT
CARL VINSON VA MEDICAL CENTER
1826 VETERANS BOULEVARD, DUBLIN, GEORGIA 31021

PROJECT NO.

557-CSI-375

DATE

03/09/2012

REVISION

ADDN. NO. 2

© 2012 Matrix Architects Incorporated

SHEET NO.

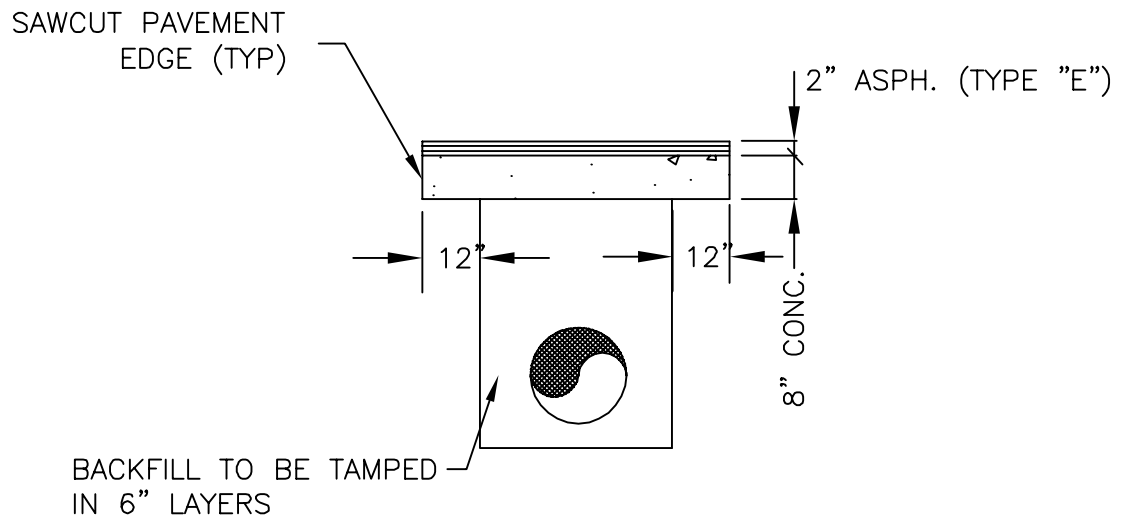
SKH-06

REF. DETAIL/SHEET

D/H603

SCALE

NONE



PAVEMENT REPLACEMENT DETAILS

N.T.S.

J M SMITH ENGINEERING LLC

CVVAMC HOSPICE
CARE UNIT

ADDENDA - C1

DATE : 3/07/2012