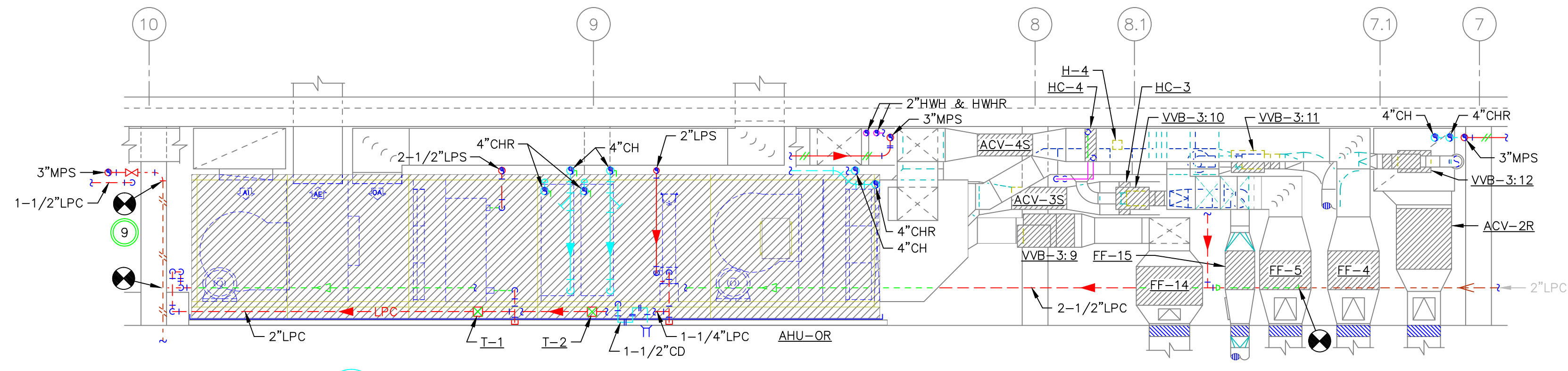
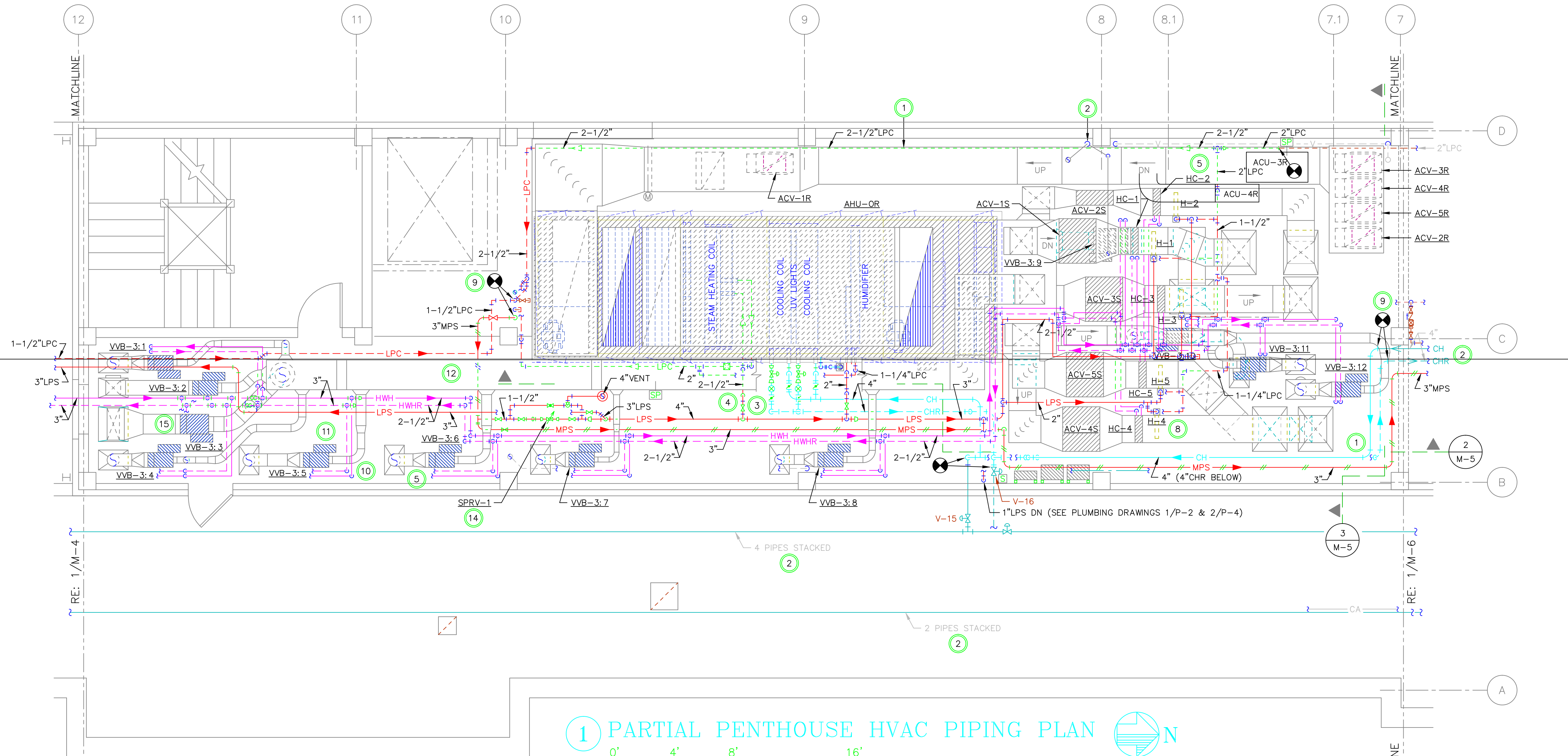


③ SECTION AT AHU - LOOKING SOUTH



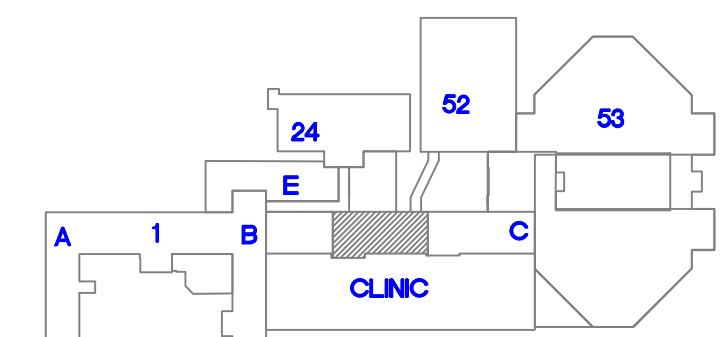
② SECTION AT AHU - LOOKING WEST



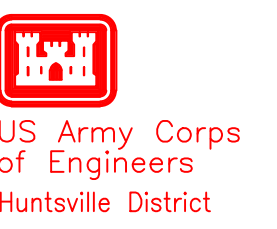
① PARTIAL PENTHOUSE HVAC PIPING PLAN

NOTES:

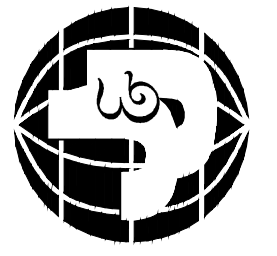
- ① NEW PIPING AND EQUIPMENT SHOWN BOLD (TYPICAL).
- ② EXISTING PIPING AND EQUIPMENT SHOWN LIGHT (TYPICAL).
- ③ SEE DETAIL 7/MD-1 FOR CHILLED WATER COIL PIPING AND DEVICES.
- ④ SEE DETAIL 6/MD-2 FOR STEAM HEATING COIL PIPING AND DEVICES.
- ⑤ SEE DETAIL 8/MD-1 FOR HEATING WATER COIL PIPING AND DEVICES.
- ⑥ PROVIDE 3/4\"
- ⑦ PROVIDE 3/4\"
- ⑧ SEE DETAIL 9/MD-1 FOR HUMIDIFIER PIPING AND DEVICES.
- ⑨ CONNECT TO EXISTING PIPING (TYPICAL). FIELD VERIFY EXACT SIZE, LOCATION, AND SERVICE.
- ⑩ HEATING WATER RUNOUTS TO VVB'S SHALL BE 3/4\"
- ⑪ AVOID ROUTING NEW PIPING CLOSER THAN 30\"
- ⑫ ROUTE ALL NEW PIPING MAINS AS HIGH AS POSSIBLE, EXCEPT WHERE SHOWN OTHERWISE BY PIPE DROPS. COORDINATE ROUTING WITH ALL NEW AND EXISTING ITEMS AND ALL OTHER TRADES.
- ⑬ ALL NEW STEAM AND STEAM CONDENSATE PIPING WILL BE A MINIMUM OF 1\"
- ⑭ LESLIE (OR APPROVED EQUAL) STEAM PRESSURE REDUCING VALVE. REFER TO DETAILS 6/MD-3 AND 7/MD-3 FOR PIPING AND DEVICES.
- ⑮ PROVIDE 1\"
- ⑯ PROVIDE 1-1/2\"



KEY PLAN
SCALE: NO SCALE



J&J MAINTENANCE, INC.
3755 Capital of Texas Hwy. S, Suite 365
Austin, Texas 78704-7916
512-444-7271 FAX 512-444-7454



Rev.	Date	Design file no.	Drawing code	File name	Plot scale
01	AS-BUILT DRAWINGS	1316.11			

Designed by:	Rev.	Date:
Dim by:	Design file no.	
Reviewed by:	Drawing code:	
Submitted by:	File name:	
Chief, Arch. Branch	Plot date:	
	Plot scale:	

AS-BUILT DRAWINGS
SURGERY SUITE
JACK C. MONTGOMERY VA MEDICAL CENTER
BUILDING #1, C-WING, 3RD FLR.,
MUSKOGEE, OKLAHOMA
DAC487-03-0-0010 TASK ORDER 001

Sheet
reference
number:
M-5
Sheet 36 of 92