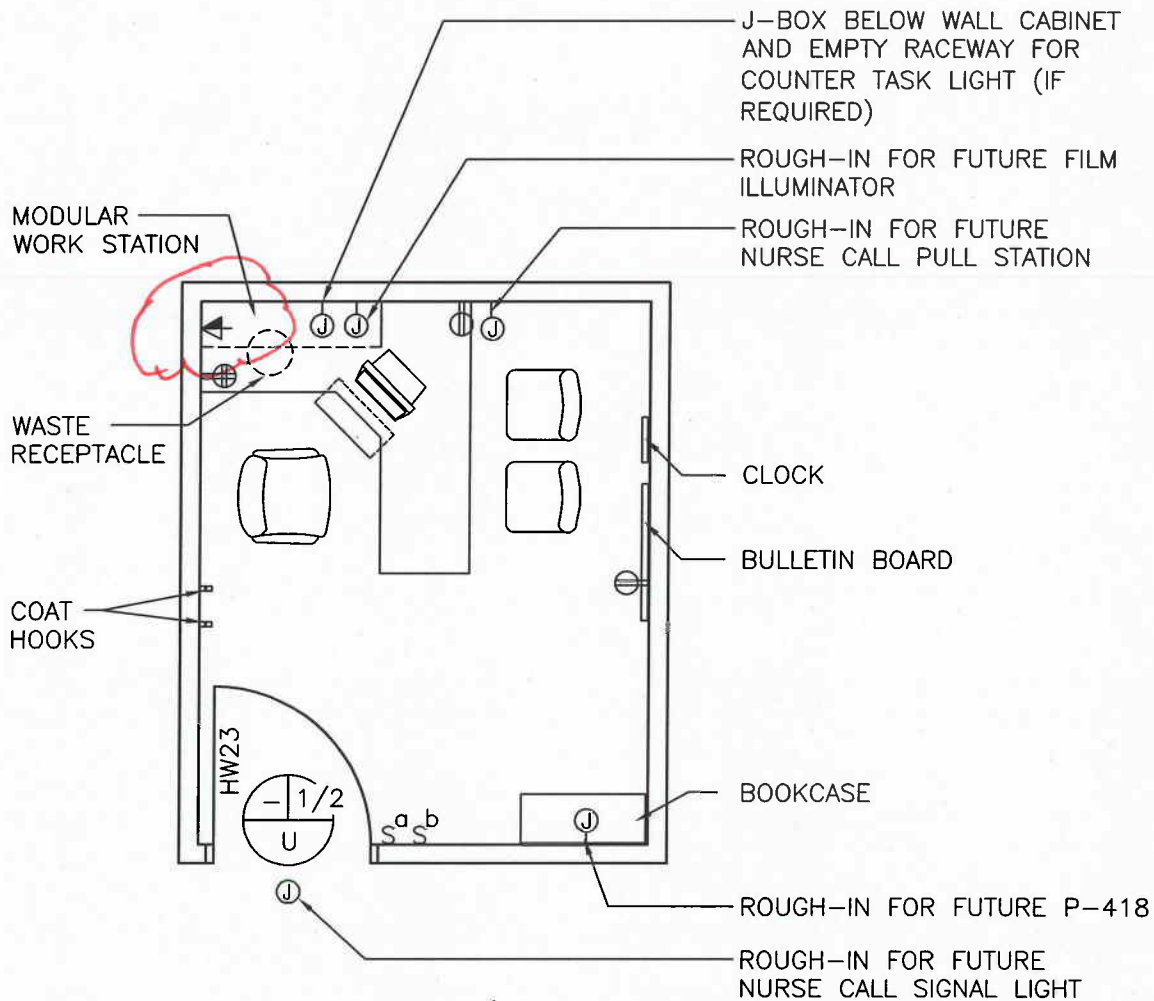


Office (OFA01)(OFA02)(OFA03)(SEC01)(OFC01)(OFC02)(OFD01)(OFD03)(OFDC1)(OFDR1)

Floor Plan

CONSIDER PROVIDING BACKING ROUGH-INS FOR CONVERSION TO EXAM ROOM-SEE GUIDE PLATE 4-174 SIMILAR.



Typical: 120 NSF/ 11.2 NSM (Shown above)

Minimum: 80 NSF/ 7.4 NSM

Maximum: 150 NSF/ 13.9 NSM

SCALE $\frac{1}{4}" = 1'-0"$



NOTE: Guide plates are graphical representations of selected room types, illustrating the integration of space, components, systems, and equipment. They provide typical configurations and general technical guidance, and are not intended to be project specific. Specific infrastructure design requirements are contained in VA Design Manuals and Space Planning Criteria located in the VA Technical Information Library.