

# CONSTRUCTION PLANS FOR VA-MENTAL HEALTH CRRC 4,640 SF MODULAR BUILDING 4500 S. LANCASTER RD.

CITY OF DALLAS, DALLAS COUNTY, TEXAS  
JULY 2014

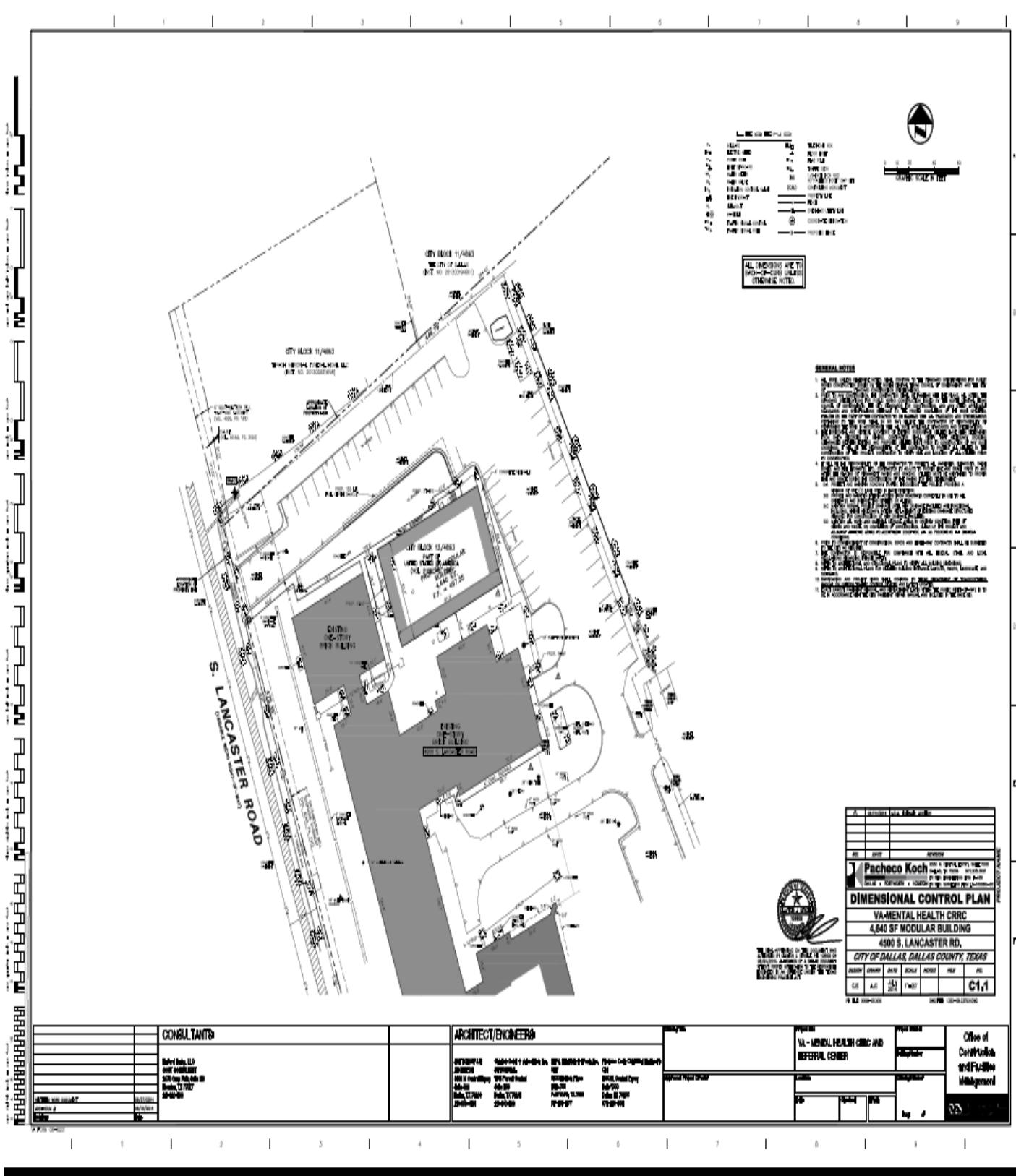


## DRAWING SHEET INDEX

SHEET	DESCRIPTION
C0,1	COVER SHEET
C1,1	DIMENSIONAL CONTROL PLAN
C1,2	DEMOLITION PLAN
C2,1	GRADING PLAN
C3,1	WATER & WASTEWATER PLAN
C4,1	PAVING PLAN
C5,1	EROSION CONTROL

CONSULTANTS		ARCHITECT/ENGINEERS		PROJECT		DATE	
<b>City of Dallas</b> 4500 S. LANCASTER RD. DALLAS, TX 75208 TEL: 214.752.2400 FAX: 214.752.2404		<b>VA-Mental Health CRRC</b> 4500 S. LANCASTER RD. DALLAS, TX 75208 TEL: 214.752.2400 FAX: 214.752.2404		VA-Mental Health CRRC and Referral Center		July 2014	
<b>City of Dallas</b> 4500 S. LANCASTER RD. DALLAS, TX 75208 TEL: 214.752.2400 FAX: 214.752.2404		<b>VA-Mental Health CRRC</b> 4500 S. LANCASTER RD. DALLAS, TX 75208 TEL: 214.752.2400 FAX: 214.752.2404		VA-Mental Health CRRC and Referral Center		July 2014	
<b>City of Dallas</b> 4500 S. LANCASTER RD. DALLAS, TX 75208 TEL: 214.752.2400 FAX: 214.752.2404		<b>VA-Mental Health CRRC</b> 4500 S. LANCASTER RD. DALLAS, TX 75208 TEL: 214.752.2400 FAX: 214.752.2404		VA-Mental Health CRRC and Referral Center		July 2014	

Office of  
Construction  
and Facilities  
Management



- LEGEND**
- 1. LOT
  - 2. EASEMENT
  - 3. EASEMENT
  - 4. EASEMENT
  - 5. EASEMENT
  - 6. EASEMENT
  - 7. EASEMENT
  - 8. EASEMENT
  - 9. EASEMENT
  - 10. EASEMENT
  - 11. EASEMENT
  - 12. EASEMENT
  - 13. EASEMENT
  - 14. EASEMENT
  - 15. EASEMENT
  - 16. EASEMENT
  - 17. EASEMENT
  - 18. EASEMENT
  - 19. EASEMENT
  - 20. EASEMENT
  - 21. EASEMENT
  - 22. EASEMENT
  - 23. EASEMENT
  - 24. EASEMENT
  - 25. EASEMENT
  - 26. EASEMENT
  - 27. EASEMENT
  - 28. EASEMENT
  - 29. EASEMENT
  - 30. EASEMENT
  - 31. EASEMENT
  - 32. EASEMENT
  - 33. EASEMENT
  - 34. EASEMENT
  - 35. EASEMENT
  - 36. EASEMENT
  - 37. EASEMENT
  - 38. EASEMENT
  - 39. EASEMENT
  - 40. EASEMENT
  - 41. EASEMENT
  - 42. EASEMENT
  - 43. EASEMENT
  - 44. EASEMENT
  - 45. EASEMENT
  - 46. EASEMENT
  - 47. EASEMENT
  - 48. EASEMENT
  - 49. EASEMENT
  - 50. EASEMENT
  - 51. EASEMENT
  - 52. EASEMENT
  - 53. EASEMENT
  - 54. EASEMENT
  - 55. EASEMENT
  - 56. EASEMENT
  - 57. EASEMENT
  - 58. EASEMENT
  - 59. EASEMENT
  - 60. EASEMENT
  - 61. EASEMENT
  - 62. EASEMENT
  - 63. EASEMENT
  - 64. EASEMENT
  - 65. EASEMENT
  - 66. EASEMENT
  - 67. EASEMENT
  - 68. EASEMENT
  - 69. EASEMENT
  - 70. EASEMENT
  - 71. EASEMENT
  - 72. EASEMENT
  - 73. EASEMENT
  - 74. EASEMENT
  - 75. EASEMENT
  - 76. EASEMENT
  - 77. EASEMENT
  - 78. EASEMENT
  - 79. EASEMENT
  - 80. EASEMENT
  - 81. EASEMENT
  - 82. EASEMENT
  - 83. EASEMENT
  - 84. EASEMENT
  - 85. EASEMENT
  - 86. EASEMENT
  - 87. EASEMENT
  - 88. EASEMENT
  - 89. EASEMENT
  - 90. EASEMENT
  - 91. EASEMENT
  - 92. EASEMENT
  - 93. EASEMENT
  - 94. EASEMENT
  - 95. EASEMENT
  - 96. EASEMENT
  - 97. EASEMENT
  - 98. EASEMENT
  - 99. EASEMENT
  - 100. EASEMENT

ALL DIMENSIONS ARE TO  
CENTERLINE UNLESS  
OTHERWISE NOTED

**GENERAL NOTES**

1. ALL DIMENSIONS ARE TO CENTERLINE UNLESS OTHERWISE NOTED.
2. ALL DIMENSIONS ARE TO CENTERLINE UNLESS OTHERWISE NOTED.
3. ALL DIMENSIONS ARE TO CENTERLINE UNLESS OTHERWISE NOTED.
4. ALL DIMENSIONS ARE TO CENTERLINE UNLESS OTHERWISE NOTED.
5. ALL DIMENSIONS ARE TO CENTERLINE UNLESS OTHERWISE NOTED.
6. ALL DIMENSIONS ARE TO CENTERLINE UNLESS OTHERWISE NOTED.
7. ALL DIMENSIONS ARE TO CENTERLINE UNLESS OTHERWISE NOTED.
8. ALL DIMENSIONS ARE TO CENTERLINE UNLESS OTHERWISE NOTED.
9. ALL DIMENSIONS ARE TO CENTERLINE UNLESS OTHERWISE NOTED.
10. ALL DIMENSIONS ARE TO CENTERLINE UNLESS OTHERWISE NOTED.
11. ALL DIMENSIONS ARE TO CENTERLINE UNLESS OTHERWISE NOTED.
12. ALL DIMENSIONS ARE TO CENTERLINE UNLESS OTHERWISE NOTED.
13. ALL DIMENSIONS ARE TO CENTERLINE UNLESS OTHERWISE NOTED.
14. ALL DIMENSIONS ARE TO CENTERLINE UNLESS OTHERWISE NOTED.
15. ALL DIMENSIONS ARE TO CENTERLINE UNLESS OTHERWISE NOTED.
16. ALL DIMENSIONS ARE TO CENTERLINE UNLESS OTHERWISE NOTED.
17. ALL DIMENSIONS ARE TO CENTERLINE UNLESS OTHERWISE NOTED.
18. ALL DIMENSIONS ARE TO CENTERLINE UNLESS OTHERWISE NOTED.
19. ALL DIMENSIONS ARE TO CENTERLINE UNLESS OTHERWISE NOTED.
20. ALL DIMENSIONS ARE TO CENTERLINE UNLESS OTHERWISE NOTED.
21. ALL DIMENSIONS ARE TO CENTERLINE UNLESS OTHERWISE NOTED.
22. ALL DIMENSIONS ARE TO CENTERLINE UNLESS OTHERWISE NOTED.
23. ALL DIMENSIONS ARE TO CENTERLINE UNLESS OTHERWISE NOTED.
24. ALL DIMENSIONS ARE TO CENTERLINE UNLESS OTHERWISE NOTED.
25. ALL DIMENSIONS ARE TO CENTERLINE UNLESS OTHERWISE NOTED.
26. ALL DIMENSIONS ARE TO CENTERLINE UNLESS OTHERWISE NOTED.
27. ALL DIMENSIONS ARE TO CENTERLINE UNLESS OTHERWISE NOTED.
28. ALL DIMENSIONS ARE TO CENTERLINE UNLESS OTHERWISE NOTED.
29. ALL DIMENSIONS ARE TO CENTERLINE UNLESS OTHERWISE NOTED.
30. ALL DIMENSIONS ARE TO CENTERLINE UNLESS OTHERWISE NOTED.
31. ALL DIMENSIONS ARE TO CENTERLINE UNLESS OTHERWISE NOTED.
32. ALL DIMENSIONS ARE TO CENTERLINE UNLESS OTHERWISE NOTED.
33. ALL DIMENSIONS ARE TO CENTERLINE UNLESS OTHERWISE NOTED.
34. ALL DIMENSIONS ARE TO CENTERLINE UNLESS OTHERWISE NOTED.
35. ALL DIMENSIONS ARE TO CENTERLINE UNLESS OTHERWISE NOTED.
36. ALL DIMENSIONS ARE TO CENTERLINE UNLESS OTHERWISE NOTED.
37. ALL DIMENSIONS ARE TO CENTERLINE UNLESS OTHERWISE NOTED.
38. ALL DIMENSIONS ARE TO CENTERLINE UNLESS OTHERWISE NOTED.
39. ALL DIMENSIONS ARE TO CENTERLINE UNLESS OTHERWISE NOTED.
40. ALL DIMENSIONS ARE TO CENTERLINE UNLESS OTHERWISE NOTED.
41. ALL DIMENSIONS ARE TO CENTERLINE UNLESS OTHERWISE NOTED.
42. ALL DIMENSIONS ARE TO CENTERLINE UNLESS OTHERWISE NOTED.
43. ALL DIMENSIONS ARE TO CENTERLINE UNLESS OTHERWISE NOTED.
44. ALL DIMENSIONS ARE TO CENTERLINE UNLESS OTHERWISE NOTED.
45. ALL DIMENSIONS ARE TO CENTERLINE UNLESS OTHERWISE NOTED.
46. ALL DIMENSIONS ARE TO CENTERLINE UNLESS OTHERWISE NOTED.
47. ALL DIMENSIONS ARE TO CENTERLINE UNLESS OTHERWISE NOTED.
48. ALL DIMENSIONS ARE TO CENTERLINE UNLESS OTHERWISE NOTED.
49. ALL DIMENSIONS ARE TO CENTERLINE UNLESS OTHERWISE NOTED.
50. ALL DIMENSIONS ARE TO CENTERLINE UNLESS OTHERWISE NOTED.
51. ALL DIMENSIONS ARE TO CENTERLINE UNLESS OTHERWISE NOTED.
52. ALL DIMENSIONS ARE TO CENTERLINE UNLESS OTHERWISE NOTED.
53. ALL DIMENSIONS ARE TO CENTERLINE UNLESS OTHERWISE NOTED.
54. ALL DIMENSIONS ARE TO CENTERLINE UNLESS OTHERWISE NOTED.
55. ALL DIMENSIONS ARE TO CENTERLINE UNLESS OTHERWISE NOTED.
56. ALL DIMENSIONS ARE TO CENTERLINE UNLESS OTHERWISE NOTED.
57. ALL DIMENSIONS ARE TO CENTERLINE UNLESS OTHERWISE NOTED.
58. ALL DIMENSIONS ARE TO CENTERLINE UNLESS OTHERWISE NOTED.
59. ALL DIMENSIONS ARE TO CENTERLINE UNLESS OTHERWISE NOTED.
60. ALL DIMENSIONS ARE TO CENTERLINE UNLESS OTHERWISE NOTED.
61. ALL DIMENSIONS ARE TO CENTERLINE UNLESS OTHERWISE NOTED.
62. ALL DIMENSIONS ARE TO CENTERLINE UNLESS OTHERWISE NOTED.
63. ALL DIMENSIONS ARE TO CENTERLINE UNLESS OTHERWISE NOTED.
64. ALL DIMENSIONS ARE TO CENTERLINE UNLESS OTHERWISE NOTED.
65. ALL DIMENSIONS ARE TO CENTERLINE UNLESS OTHERWISE NOTED.
66. ALL DIMENSIONS ARE TO CENTERLINE UNLESS OTHERWISE NOTED.
67. ALL DIMENSIONS ARE TO CENTERLINE UNLESS OTHERWISE NOTED.
68. ALL DIMENSIONS ARE TO CENTERLINE UNLESS OTHERWISE NOTED.
69. ALL DIMENSIONS ARE TO CENTERLINE UNLESS OTHERWISE NOTED.
70. ALL DIMENSIONS ARE TO CENTERLINE UNLESS OTHERWISE NOTED.
71. ALL DIMENSIONS ARE TO CENTERLINE UNLESS OTHERWISE NOTED.
72. ALL DIMENSIONS ARE TO CENTERLINE UNLESS OTHERWISE NOTED.
73. ALL DIMENSIONS ARE TO CENTERLINE UNLESS OTHERWISE NOTED.
74. ALL DIMENSIONS ARE TO CENTERLINE UNLESS OTHERWISE NOTED.
75. ALL DIMENSIONS ARE TO CENTERLINE UNLESS OTHERWISE NOTED.
76. ALL DIMENSIONS ARE TO CENTERLINE UNLESS OTHERWISE NOTED.
77. ALL DIMENSIONS ARE TO CENTERLINE UNLESS OTHERWISE NOTED.
78. ALL DIMENSIONS ARE TO CENTERLINE UNLESS OTHERWISE NOTED.
79. ALL DIMENSIONS ARE TO CENTERLINE UNLESS OTHERWISE NOTED.
80. ALL DIMENSIONS ARE TO CENTERLINE UNLESS OTHERWISE NOTED.
81. ALL DIMENSIONS ARE TO CENTERLINE UNLESS OTHERWISE NOTED.
82. ALL DIMENSIONS ARE TO CENTERLINE UNLESS OTHERWISE NOTED.
83. ALL DIMENSIONS ARE TO CENTERLINE UNLESS OTHERWISE NOTED.
84. ALL DIMENSIONS ARE TO CENTERLINE UNLESS OTHERWISE NOTED.
85. ALL DIMENSIONS ARE TO CENTERLINE UNLESS OTHERWISE NOTED.
86. ALL DIMENSIONS ARE TO CENTERLINE UNLESS OTHERWISE NOTED.
87. ALL DIMENSIONS ARE TO CENTERLINE UNLESS OTHERWISE NOTED.
88. ALL DIMENSIONS ARE TO CENTERLINE UNLESS OTHERWISE NOTED.
89. ALL DIMENSIONS ARE TO CENTERLINE UNLESS OTHERWISE NOTED.
90. ALL DIMENSIONS ARE TO CENTERLINE UNLESS OTHERWISE NOTED.
91. ALL DIMENSIONS ARE TO CENTERLINE UNLESS OTHERWISE NOTED.
92. ALL DIMENSIONS ARE TO CENTERLINE UNLESS OTHERWISE NOTED.
93. ALL DIMENSIONS ARE TO CENTERLINE UNLESS OTHERWISE NOTED.
94. ALL DIMENSIONS ARE TO CENTERLINE UNLESS OTHERWISE NOTED.
95. ALL DIMENSIONS ARE TO CENTERLINE UNLESS OTHERWISE NOTED.
96. ALL DIMENSIONS ARE TO CENTERLINE UNLESS OTHERWISE NOTED.
97. ALL DIMENSIONS ARE TO CENTERLINE UNLESS OTHERWISE NOTED.
98. ALL DIMENSIONS ARE TO CENTERLINE UNLESS OTHERWISE NOTED.
99. ALL DIMENSIONS ARE TO CENTERLINE UNLESS OTHERWISE NOTED.
100. ALL DIMENSIONS ARE TO CENTERLINE UNLESS OTHERWISE NOTED.



Pacheco Koch					
ARCHITECTS					
PACHECO KOCH ARCHITECTS, P.C.					
4500 S. LANCASTER RD., SUITE 200					
DALLAS, TEXAS 75246					
TEL: 214.742.1234					
FAX: 214.742.1235					
WWW.PACHECKOCH.COM					
DIMENSIONAL CONTROL PLAN					
VA-MENTAL HEALTH CLINIC AND REFERRAL CENTER					
4,640 SF MODULAR BUILDING					
4500 S. LANCASTER RD.,					
CITY OF DALLAS, DALLAS COUNTY, TEXAS					
DATE	BY	CHKD	APPD	SCALE	REV
01.11.11	AS	AS	AS	1"=20'	C1.1

<b>CONSULTANTS</b>		<b>ARCHITECT/ENGINEER</b>		<b>OWNER</b>		<b>PROJECT</b>	
Baker Realty, LLC 4401 W. 14th Street 200 West 14th, Suite 200 Dallas, TX 75207 214-441-1111		Pacheco Koch Architects, P.C. 4500 S. Lancaster Rd., Suite 200 Dallas, TX 75246 214-742-1234		U.S. Department of Veterans Affairs 4500 S. Lancaster Rd. Dallas, TX 75246 214-742-1234		VA - MENTAL HEALTH CLINIC AND REFERRAL CENTER	
DATE: 01.11.11		DATE: 01.11.11		DATE: 01.11.11		DATE: 01.11.11	
BY: AS		BY: AS		BY: AS		BY: AS	
CHKD: AS		CHKD: AS		CHKD: AS		CHKD: AS	
APPD: AS		APPD: AS		APPD: AS		APPD: AS	
SCALE: 1"=20'		SCALE: 1"=20'		SCALE: 1"=20'		SCALE: 1"=20'	
REV: C1.1		REV: C1.1		REV: C1.1		REV: C1.1	

Office of  
Construction  
and Facility  
Management



