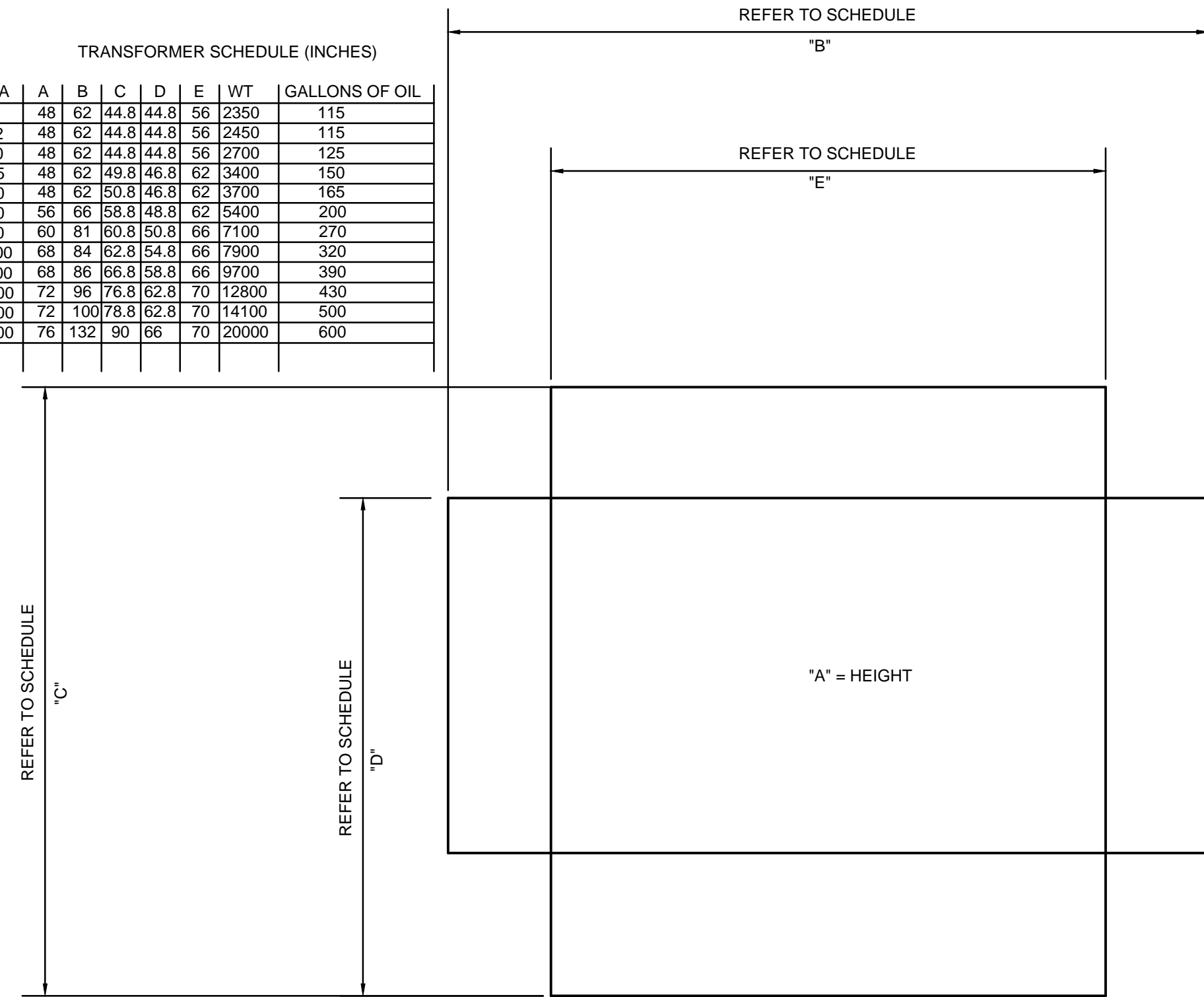
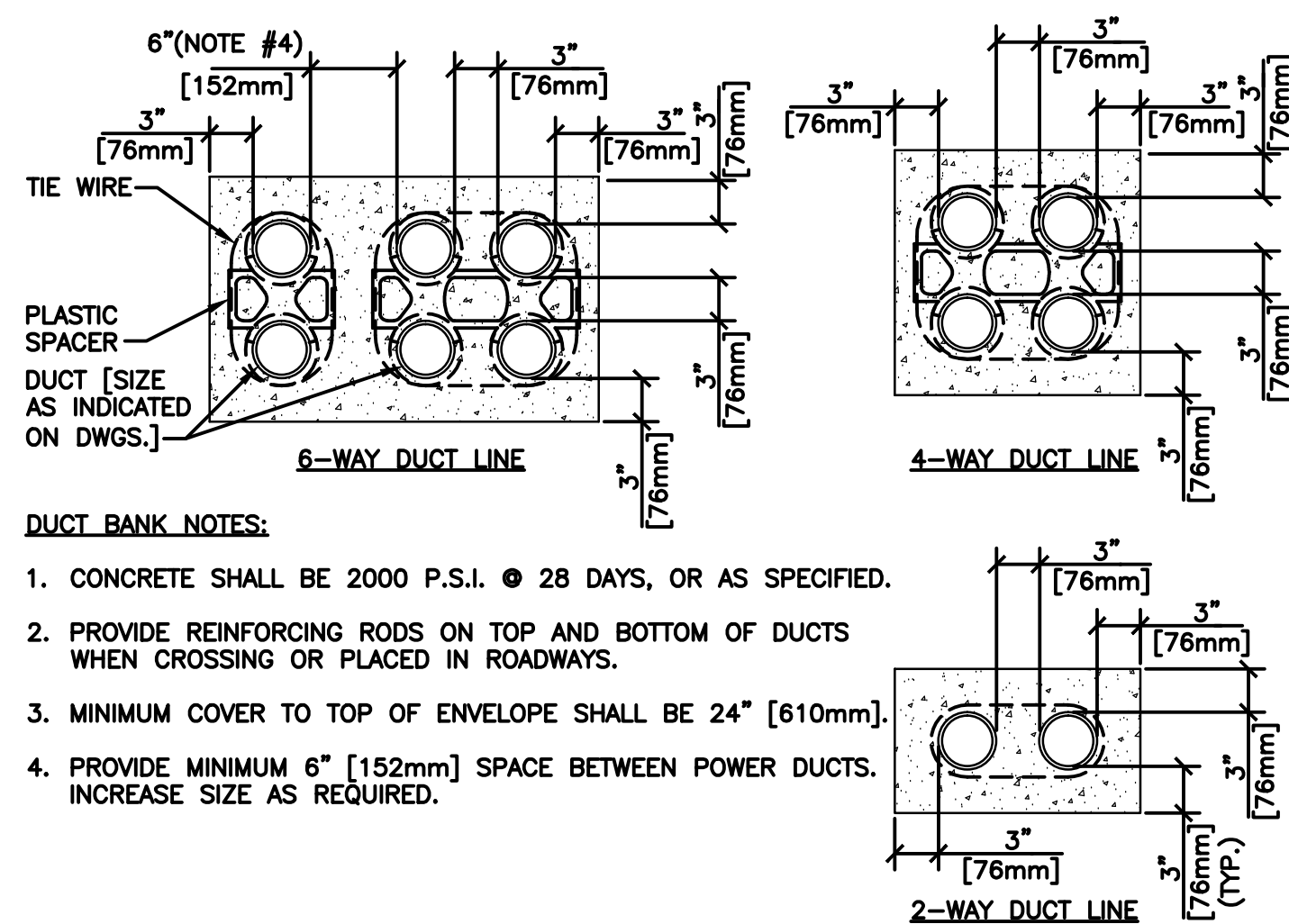


1 GAS SWITCH PLAN
SCALE: NTS

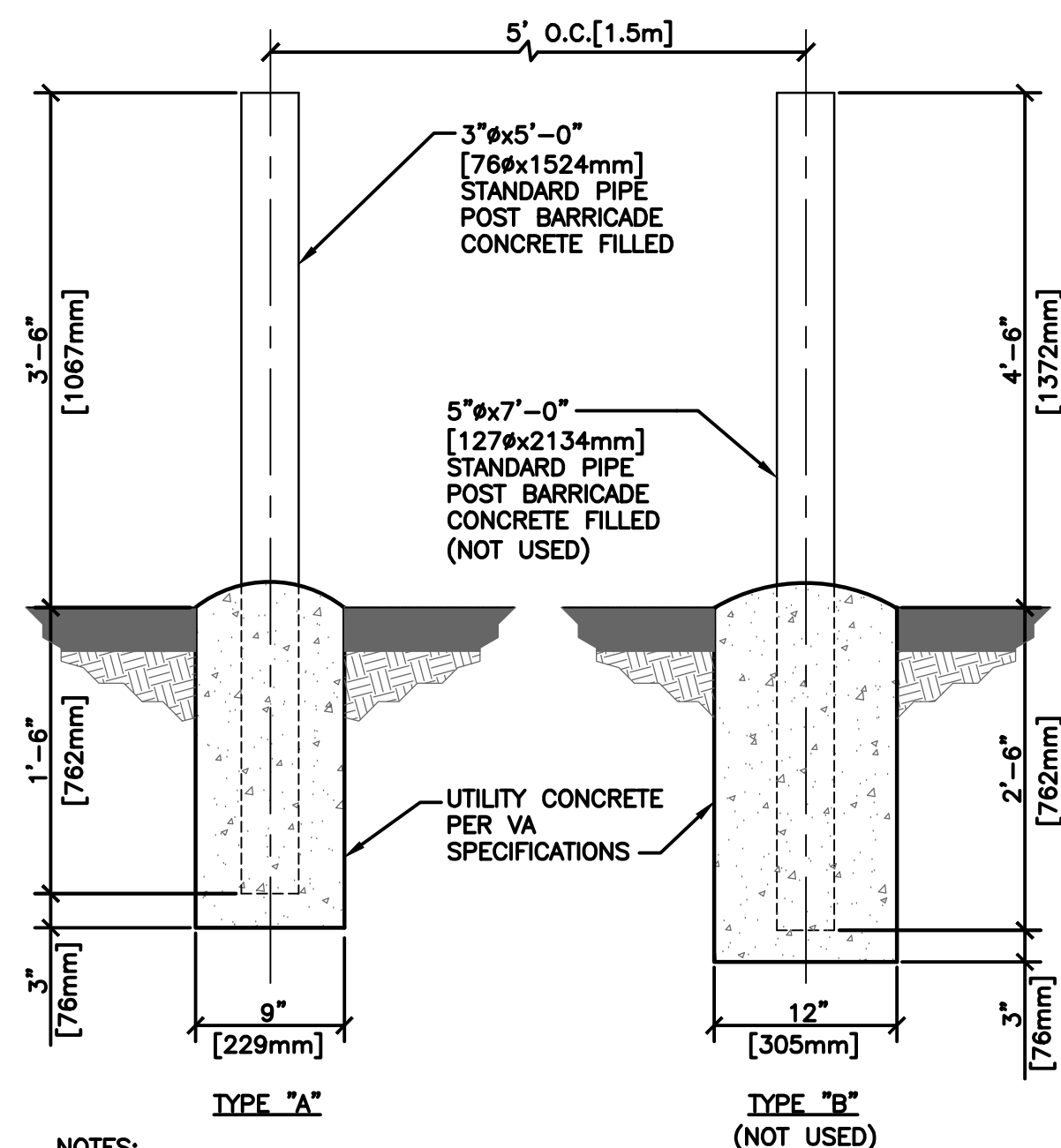
TRANSFORMER SCHEDULE (INCHES)									
KVA	A	B	C	D	E	WT	GALLONS OF OIL		
75	48	62	44.8	44.8	56	2350	115		
112	48	62	44.8	44.8	56	2450	115		
150	48	62	44.8	44.8	56	2700	125		
225	48	62	48.8	48.8	62	3400	150		
300	48	62	50.8	48.8	62	3700	165		
500	56	66	58.8	48.8	62	5400	200		
750	60	81	60.8	50.8	66	7100	270		
1000	68	84	62.8	54.8	66	7900	320		
1500	68	86	66.8	58.8	66	9700	390		
2000	72	96	76.8	62.8	70	12800	430		
2500	72	100	78.8	62.8	70	14100	500		
3000	76	132	90	66	70	20000	600		



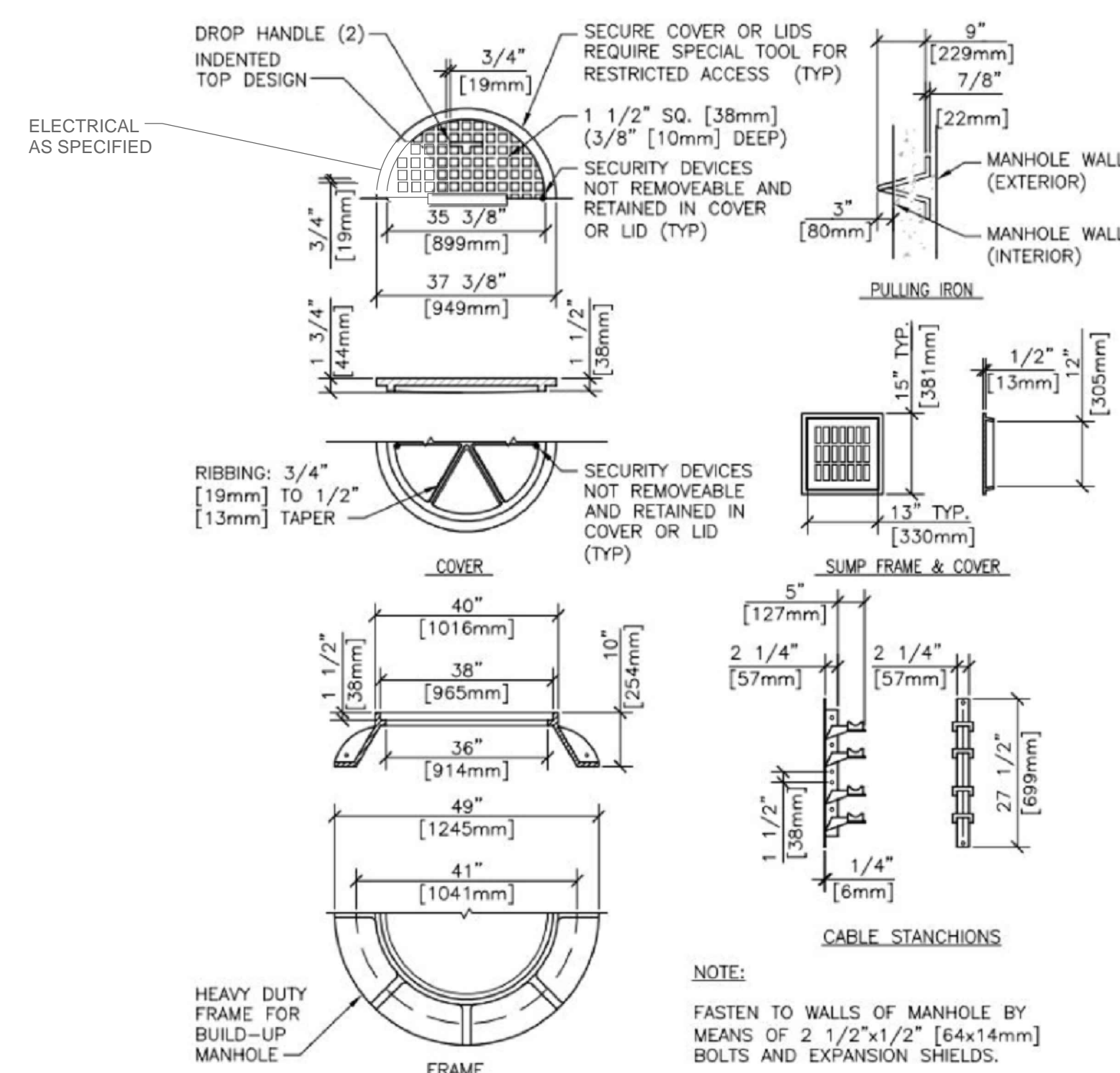
2 PAD MOUNTED TRANSFORMER - PLAN
SCALE: NTS



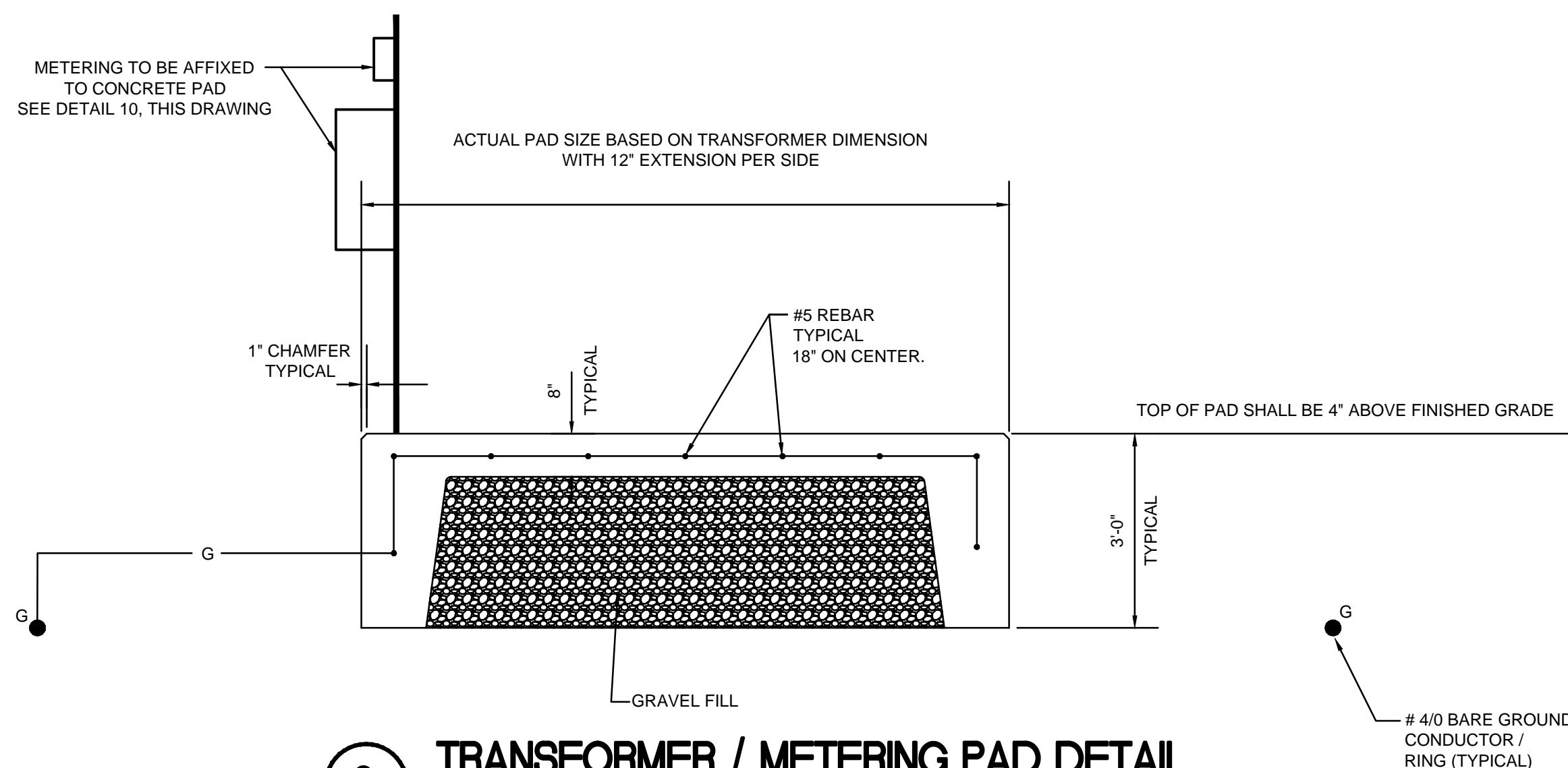
5 DUCT BANK DETAILS
SCALE: NTS



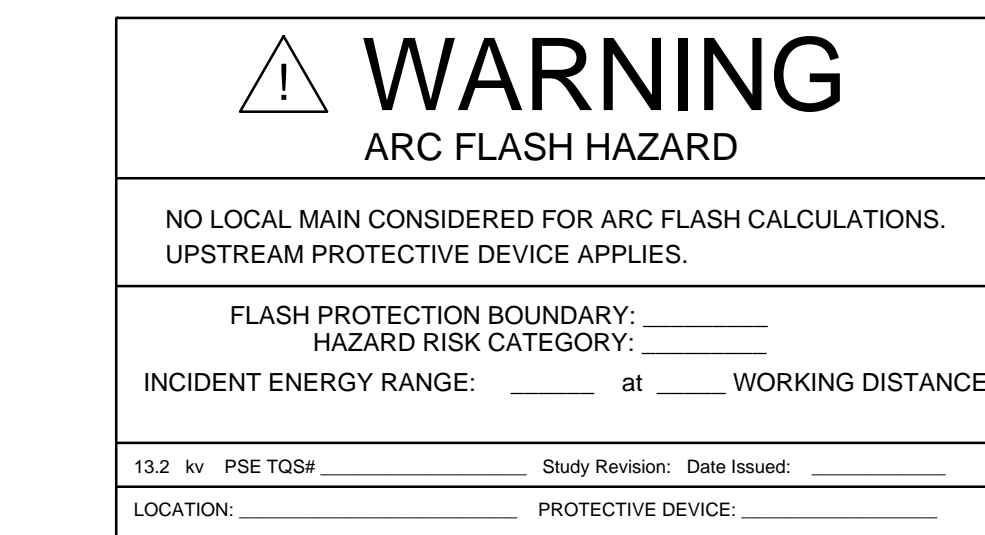
8 BOLLARD DETAIL
SCALE: NTS



6 MANHOLE HARDWARE DETAIL
SCALE: NTS



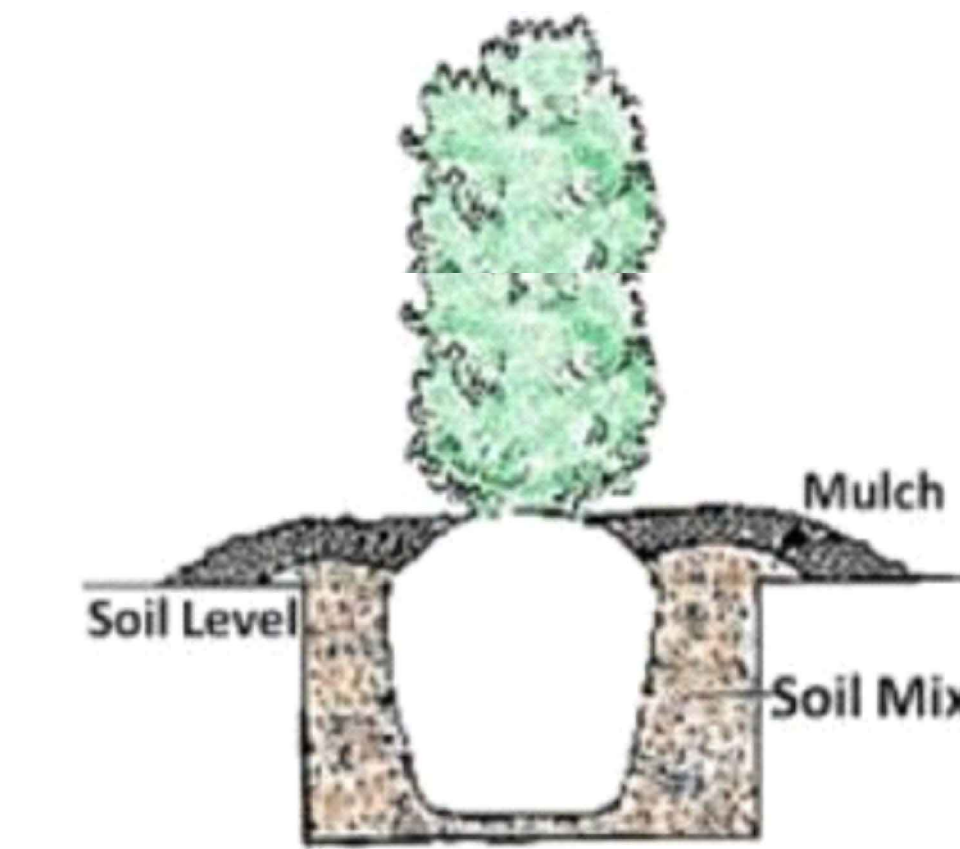
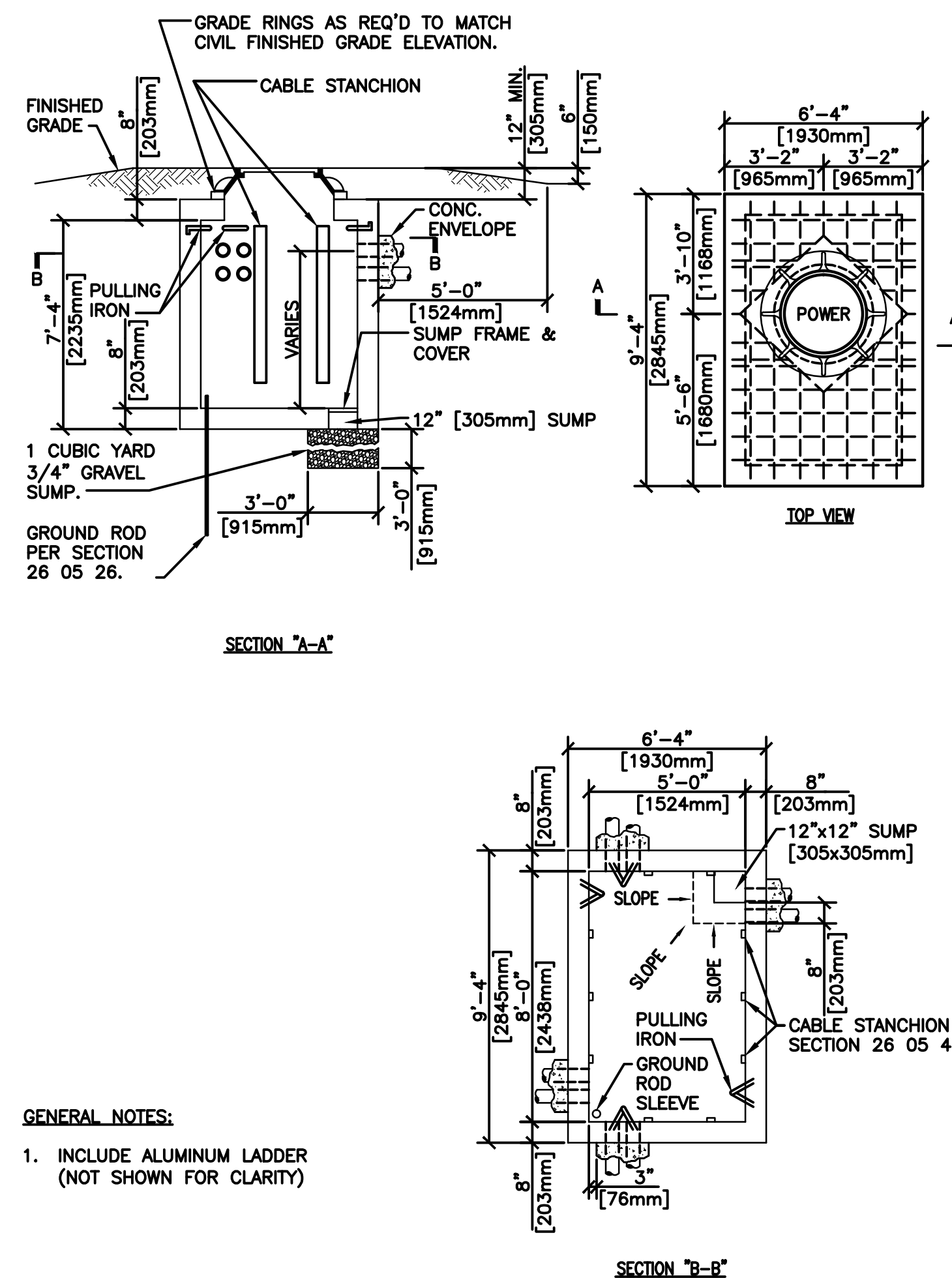
9 TRANSFORMER / METERING PAD DETAIL
SCALE: NTS



7 ARC FLASH LABEL
SCALE: NTS

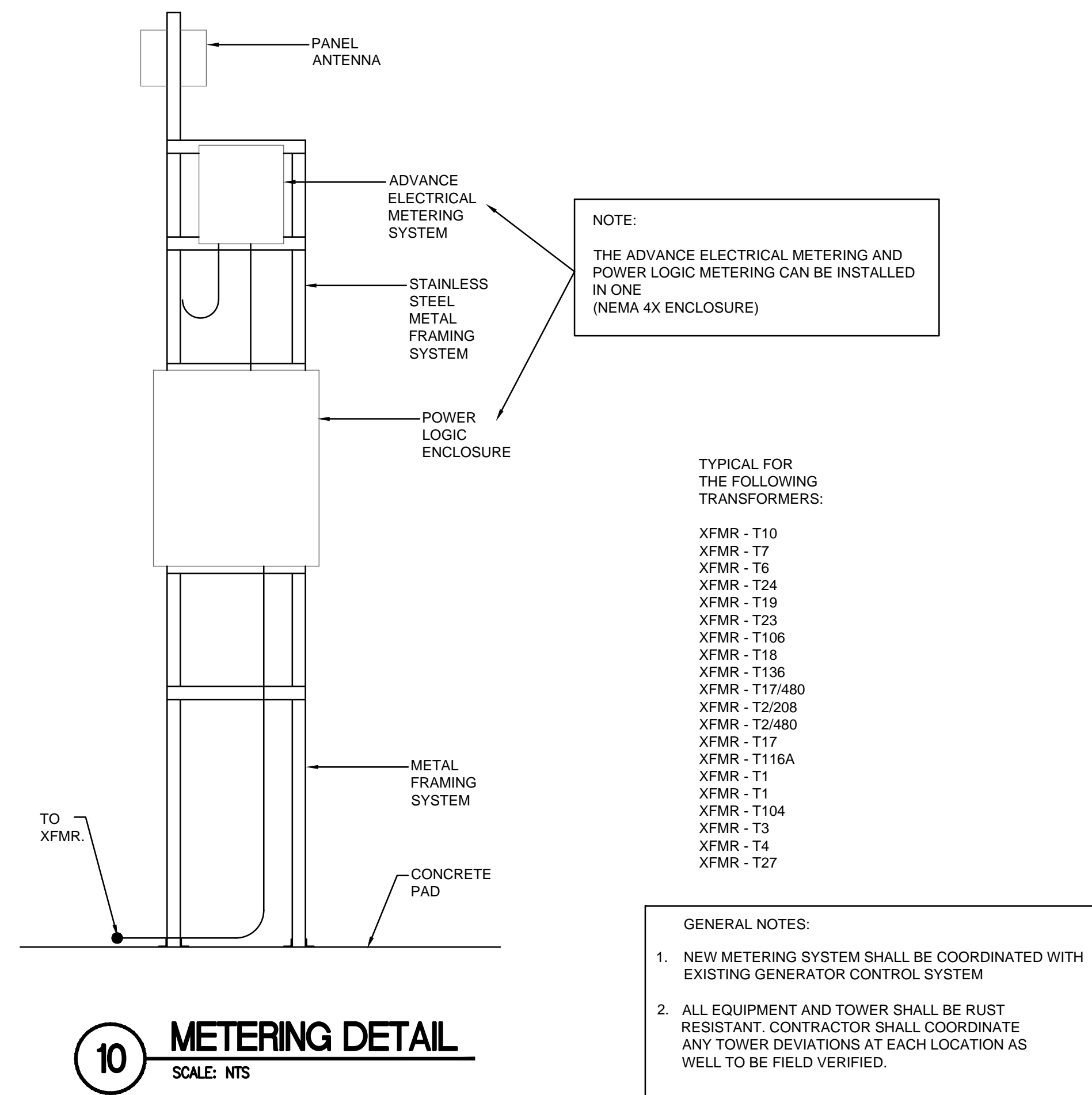
GENERAL NOTES:
1. INCLUDE ALUMINUM LADDER (NOT SHOWN FOR CLARITY)

3 POWER MANHOLE DETAILS
SCALE: NTS



- NOTES:
- ARBORVITAE SHALL BE EMERALD GREEN ARBORVITAE TREES.
 - ARBORVITAE PLANTING SHALL CONSIST OF 6 FOOT TALL, EXTRA WIDE (GRADE A, EXTRA HEAVY), WITH A GROWTH RATE OF 12-24\"/>
 - ARBORVITAE SHALL BE FROM A LOCAL NURSERY THAT HAS KNOWLEDGE TO RECOMMEND THE PROPER CULTIVARS FOR THE LEBANON AREA AND PROVIDE A WRITTEN GUARANTEE THE PLANTS ARE HEALTHY.
 - ARBORVITAE SHALL BE PLANTED IN A ROW AS A DECORATIVE BORDER PLANTING TO PROVIDE PRIVACY SCREEN AROUND ELECTRICAL EQUIPMENT. PLANTINGS SHALL BE 3 FEET APART ON CENTER.
 - PROVIDE MULCH AROUND THE BASE. MULCH SHALL BE 4 INCHES DEEP. PULL MULCH AWAY FROM BASE TO PREVENT DISEASE AND INSECT DAMAGE.

4 ARBORVITAE DETAIL
SCALE: NTS



10 METERING DETAIL
SCALE: NTS

CONSULTANTS:		ARCHITECT/ENGINEERS:		Drawing Title ELECTRICAL DETAILS		Project Title REPLACE OIL SWITCH		Project Number # 595-11-134		Office of Construction and Facilities Management	
		A E works		Approved Project Director		Location 1700 South Lincoln Ave - Lebanon, PA 17042		Building Number ---		Drawing Number E6	
Revisions		101 W. STATION SQUARE DR. GATEHOUSE STE 401 PITTSBURGH, PENNSYLVANIA 15219-1196 PHONE: 412.287.7333 FAX: 412.287.7334 WWW.AE-WORKS.COM		Date 05/02/2012		Checked SK		Drawn TA		Department of Veterans Affairs	