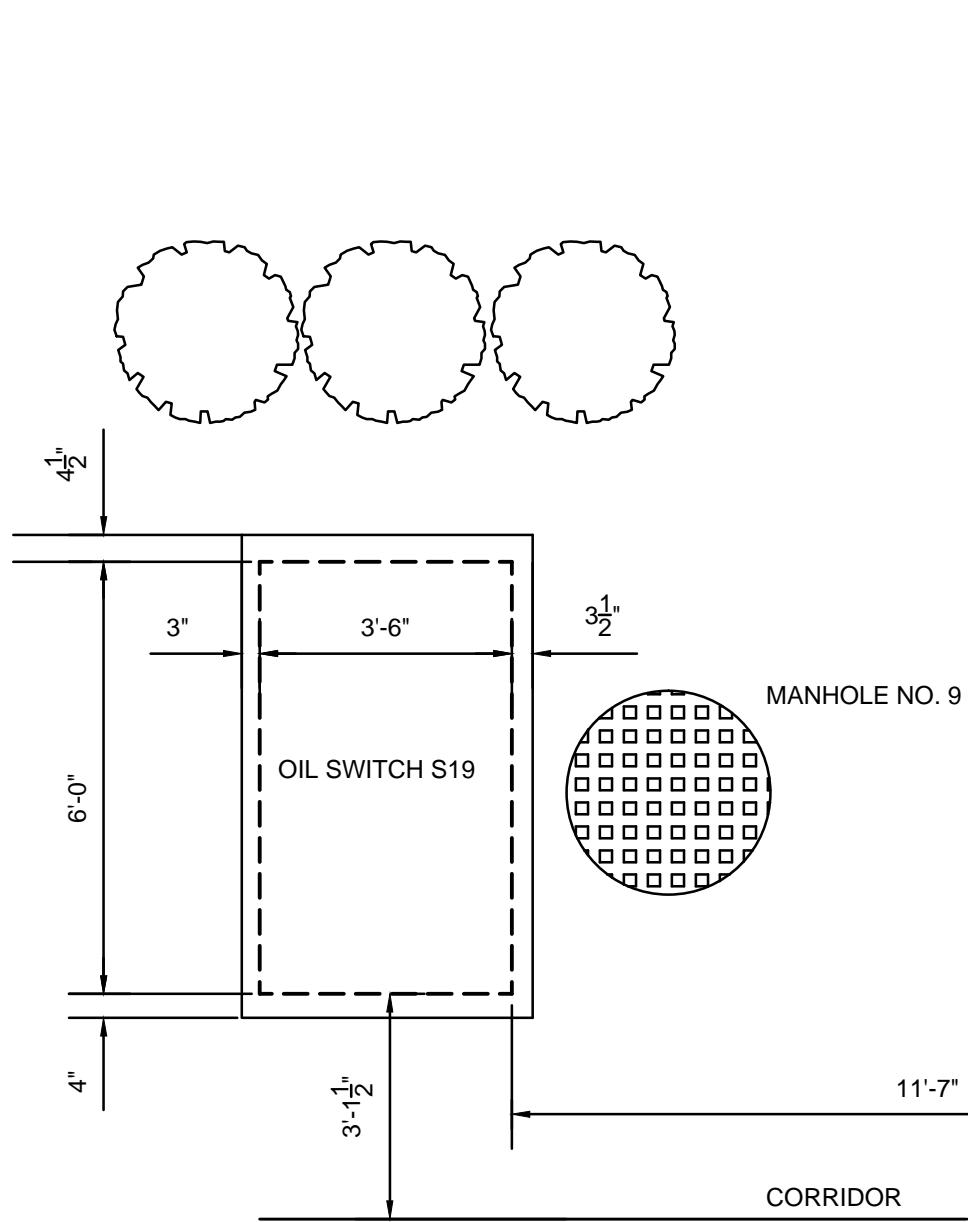
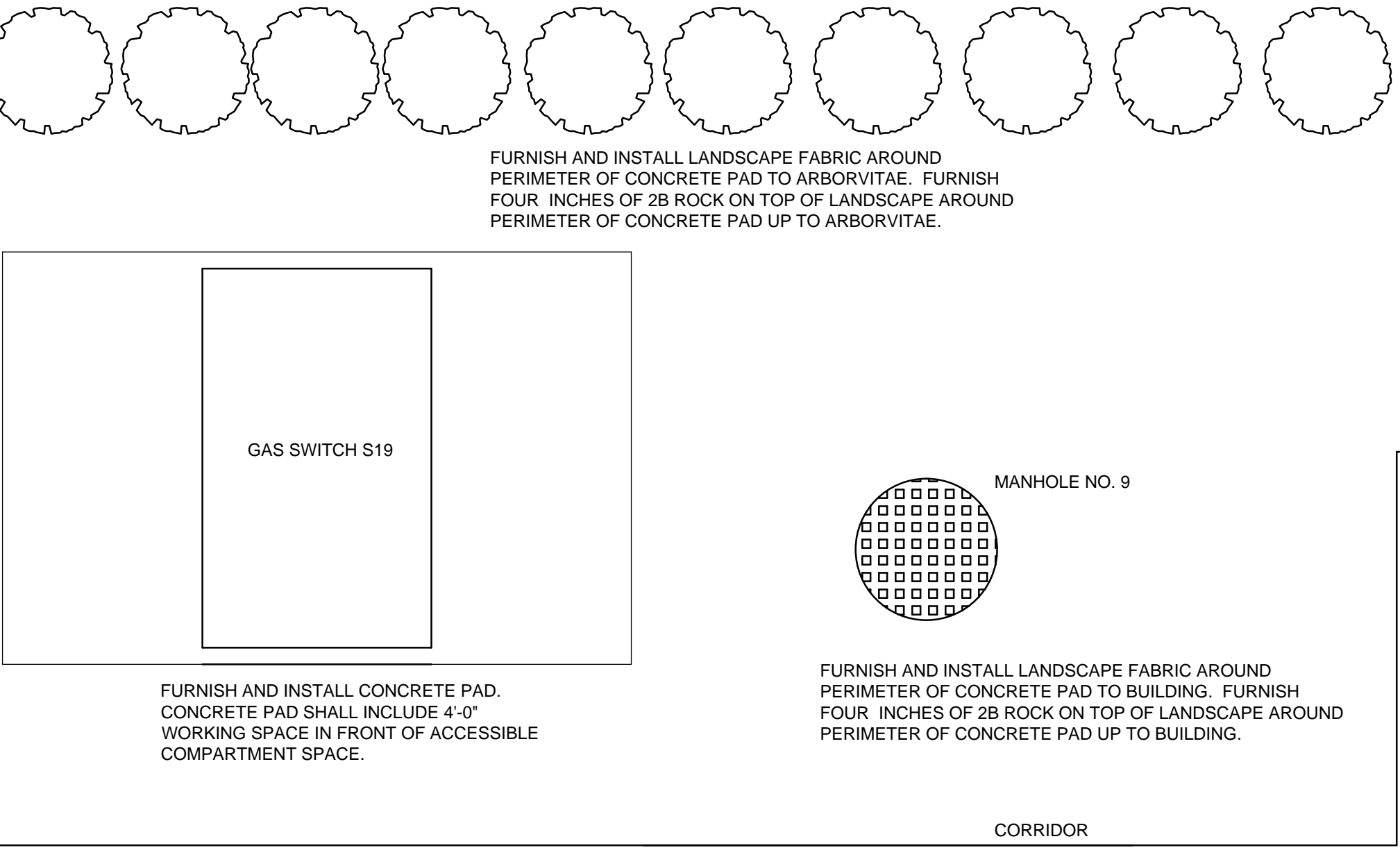


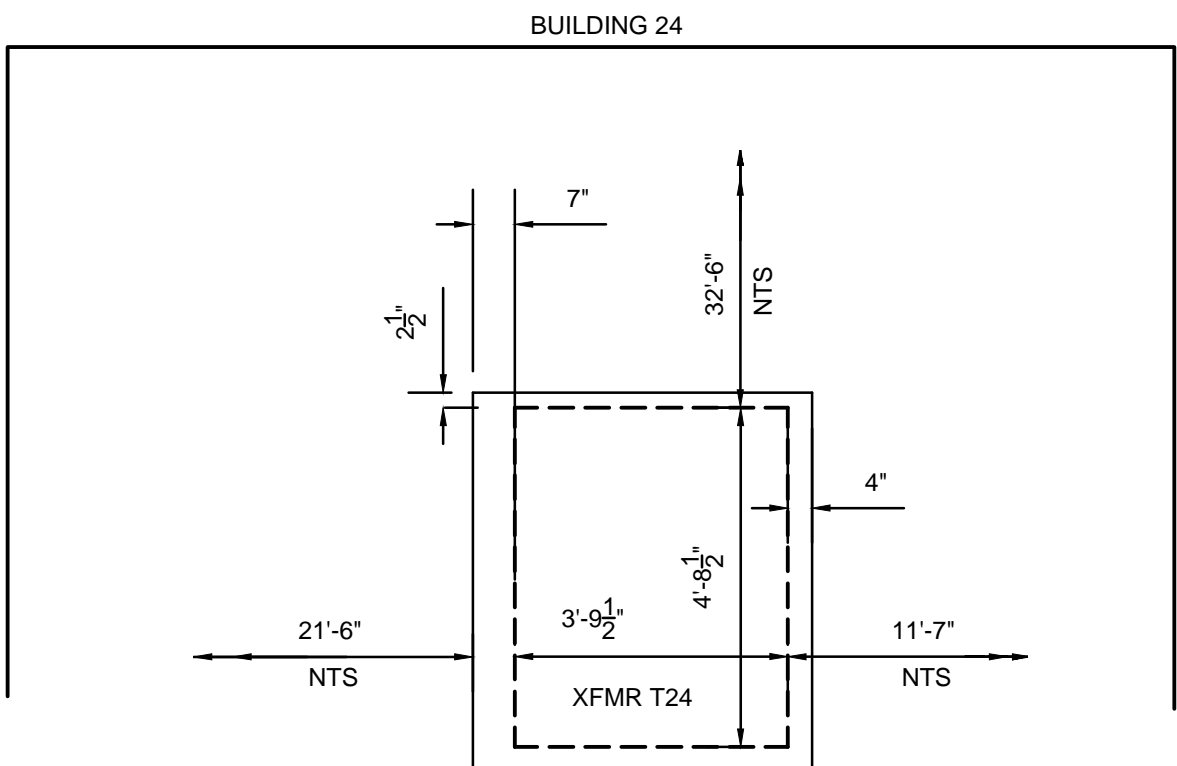
three inches = one foot
one and one half inches = one foot
one inch = one foot
three quarters inch = one foot
one half inch = one foot
three eighths inch = one foot
one quarter inch = one foot
one eighth inch = one foot
one eighth inch = one foot



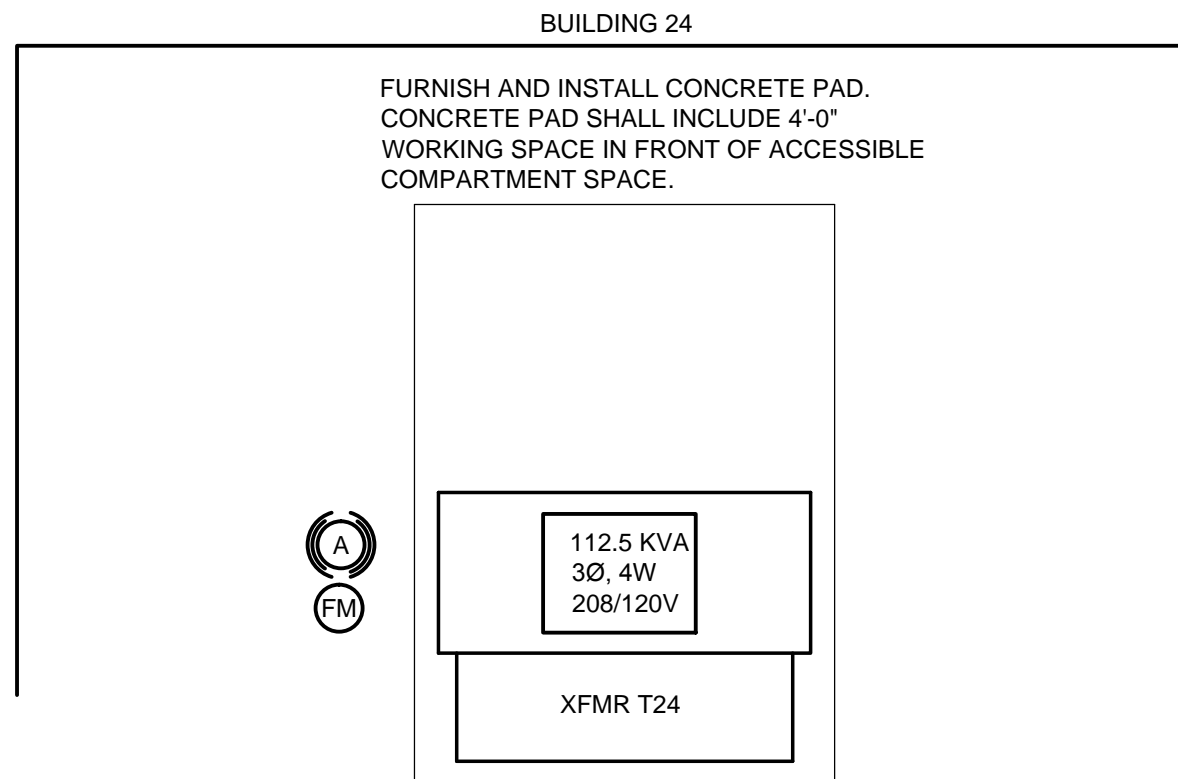
1 ENLARGED PLAN - OIL SWITCH S19 - DEMOLITION
SCALE: 3/8" = 1'-0"



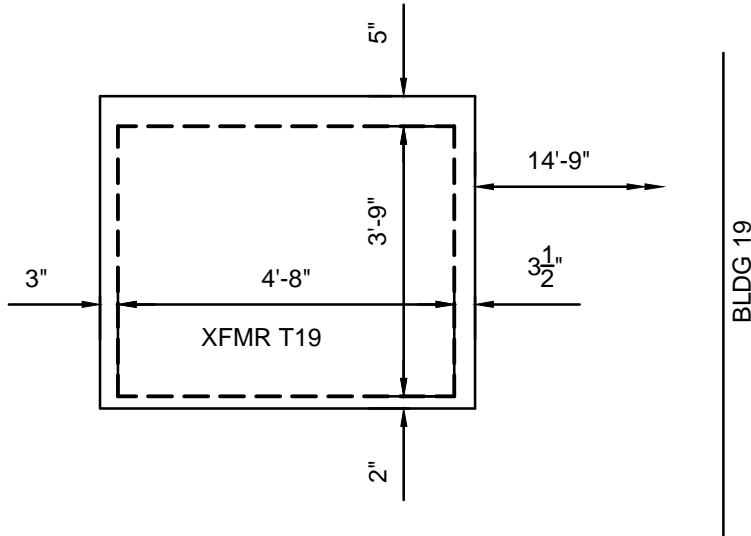
1A ENLARGED PLAN - GAS SWITCH S19 - NEW WORK
SCALE: 3/8" = 1'-0"



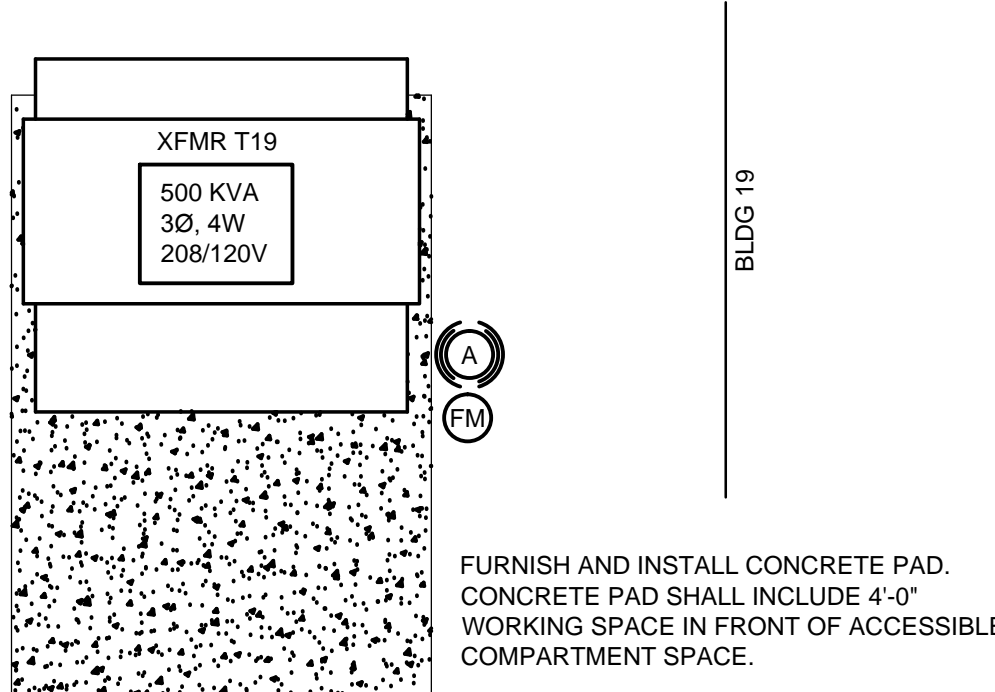
2 ENLARGED PLAN - XFMR T24 - DEMOLITION
SCALE: 3/8" = 1'-0"



2A ENLARGED PLAN - XFMR T24 - NEW WORK
SCALE: 3/8" = 1'-0"



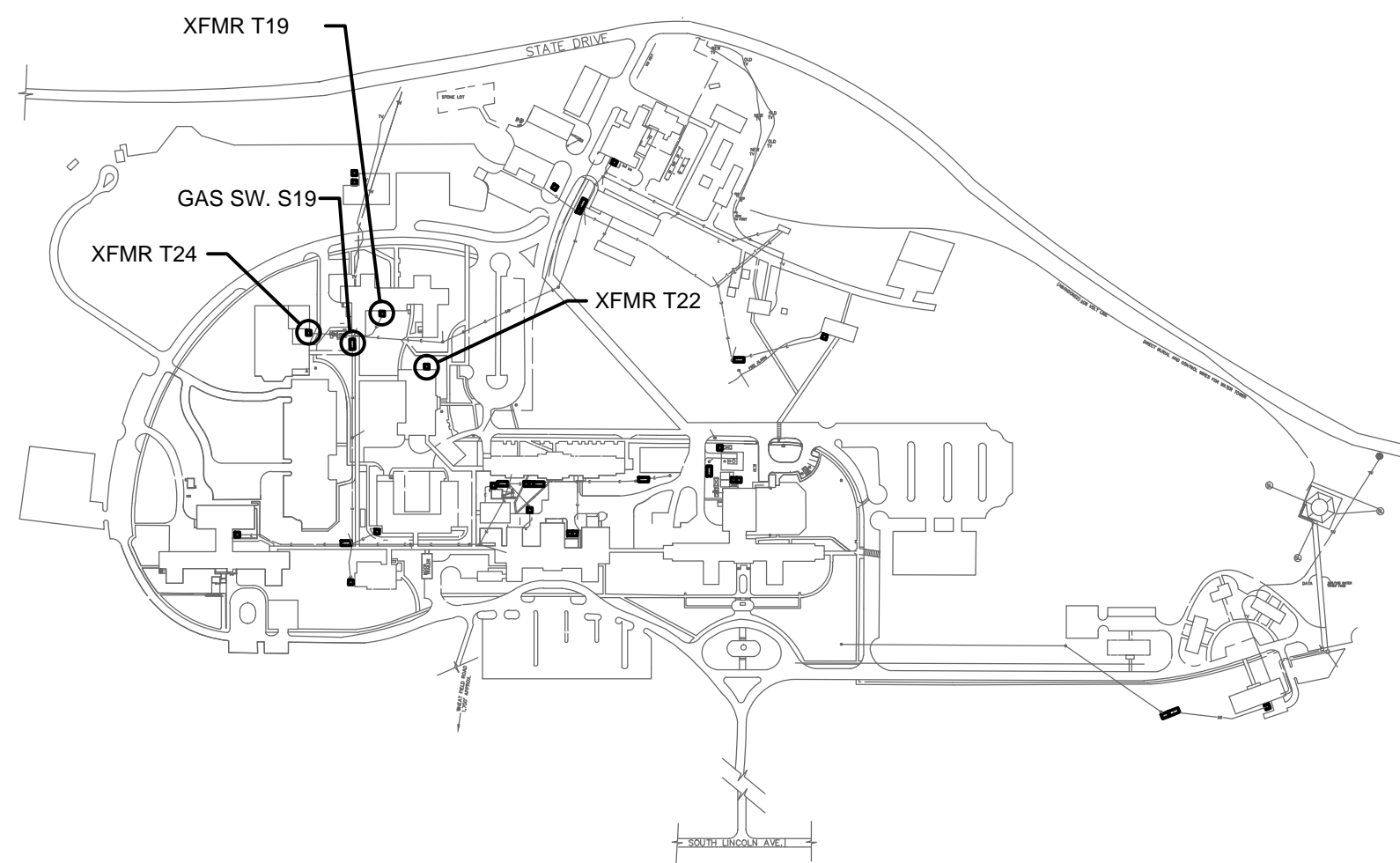
3 ENLARGED PLAN -XFMR T19 - DEMOLITION
SCALE: 3/8" = 1'-0"



3A ENLARGED PLAN -XFMR T19 - NEW WORK
SCALE: 3/8" = 1'-0"

GENERAL NOTES:

- CONTRACTOR SHALL PROVIDE ALL PUMPING EQUIPMENT AND DEWATER ALL MANHOLES. CONTRACTOR SHALL SHOVEL ALL MUD, SILT, DEBRIS OUT OF MANHOLE.
- TESTING SHALL BE PERFORMED ON ALL MEDIUM VOLTAGE CABLES PRIOR TO AND AFTER THE CONNECTIONS ARE MADE.
- ALL NEW ELECTRICAL TRENCHES, DUCT BANKS, AND THE OVERALL INSTALLATION SHALL BE INSPECTED AND TESTED IN ACCORDANCE WITH THE SPECIFICATIONS. PROVIDE ENOUGH NOTIFICATION FOR THE INSPECTING AUTHORITY TO ARRIVE AT THE SITE IN ADEQUATE TIME FOR THE INSPECTION PROCESS TO OCCUR.
- ALL SHUTDOWNS SHALL BE KEPT TO AN ABSOLUTE MINIMUM WITH THE CONTRACTOR PROVIDING ALL REQUIRED BACK UP POWER AND MANPOWER TO ENSURE RESTORATION OF NORMAL POWER.
- THE CONTRACTOR SHALL COORDINATE ACTIVITIES WITH ALL OTHER CONSTRUCTION PROJECTS AT THIS CAMPUS. THE PROJECT SUPERVISOR SHALL ATTEND DAILY CONSTRUCTION MEETINGS WITH ALL THE CONTRACTORS ON SITE FROM 8:30 AM TO 8:45 AM.
- GAS SWITCHES AND TRANSFORMERS SHALL BE PROVIDED WITH LARGE SWEEP PVC COATED GALVANIZED RIGID STEEL 90° ELBOW CONDUITS FROM EACH SWITCH POSITION TO ITS ASSOCIATED MANHOLE.
- LANDSCAPING SHALL BE PROVIDED AS FOLLOWS (IN GENERAL):
 - AREAS WITH BOLLARDS AND ARBORVITAE: BOLLARDS SHALL BE MOUNTED AT 5' INTERVALS AT 13' FROM ELECTRICAL EQUIPMENT (IN GRASSY AREAS) AND 4' FROM ELECTRICAL EQUIPMENT WHERE TIGHT QUARTERS TO EXISTING ROADWAYS EXIST. ARBORVITAE SHALL BE PLACED OUTSIDE BOLLARDS AROUND PERIMETER. THE AREA BETWEEN THE ARBORVITAE AND CONCRETE PAD SHALL HAVE LANDSCAPING FABRIC INSTALLED WITH 4" OF 2B ROCK ON TOP OF IT.
 - AREAS WITH ARBORVITAE: ARBORVITAE SHALL BE PLACED AROUND PERIMETER, NO CLOSER THAN 6' TO CONCRETE PAD. THE AREA BETWEEN THE ARBORVITAE AND CONCRETE PAD SHALL HAVE LANDSCAPING FABRIC INSTALLED WITH 4" OF 2B ROCK ON TOP OF IT.
 - AREAS WITHOUT ARBORVITAE: GRASS SHALL BE PROVIDED AROUND NEW PADS AND TO EXTENTS OF EXCAVATION TO MATCH EXISTING SURROUNDING AREA.
- SEE DRAWING E6 FOR ELECTRICAL DETAILS.



KEY PLAN
NTS

CONSTRUCTION DOCUMENTS | 00%

CONSULTANTS:		ARCHITECT/ENGINEERS:		Drawing Title ENLARGED PLANS		Project Title REPLACE OIL SWITCH		Project Number # 595-11-134		Office of Construction and Facilities Management	
								Building Number ---			
Revisions:				Approved Project Director		Location 1700 South Lincoln Ave - Lebanon, PA 17042		Drawing Number E8		Department of Veterans Affairs	
						Date 05/02/2012		Checked SK			