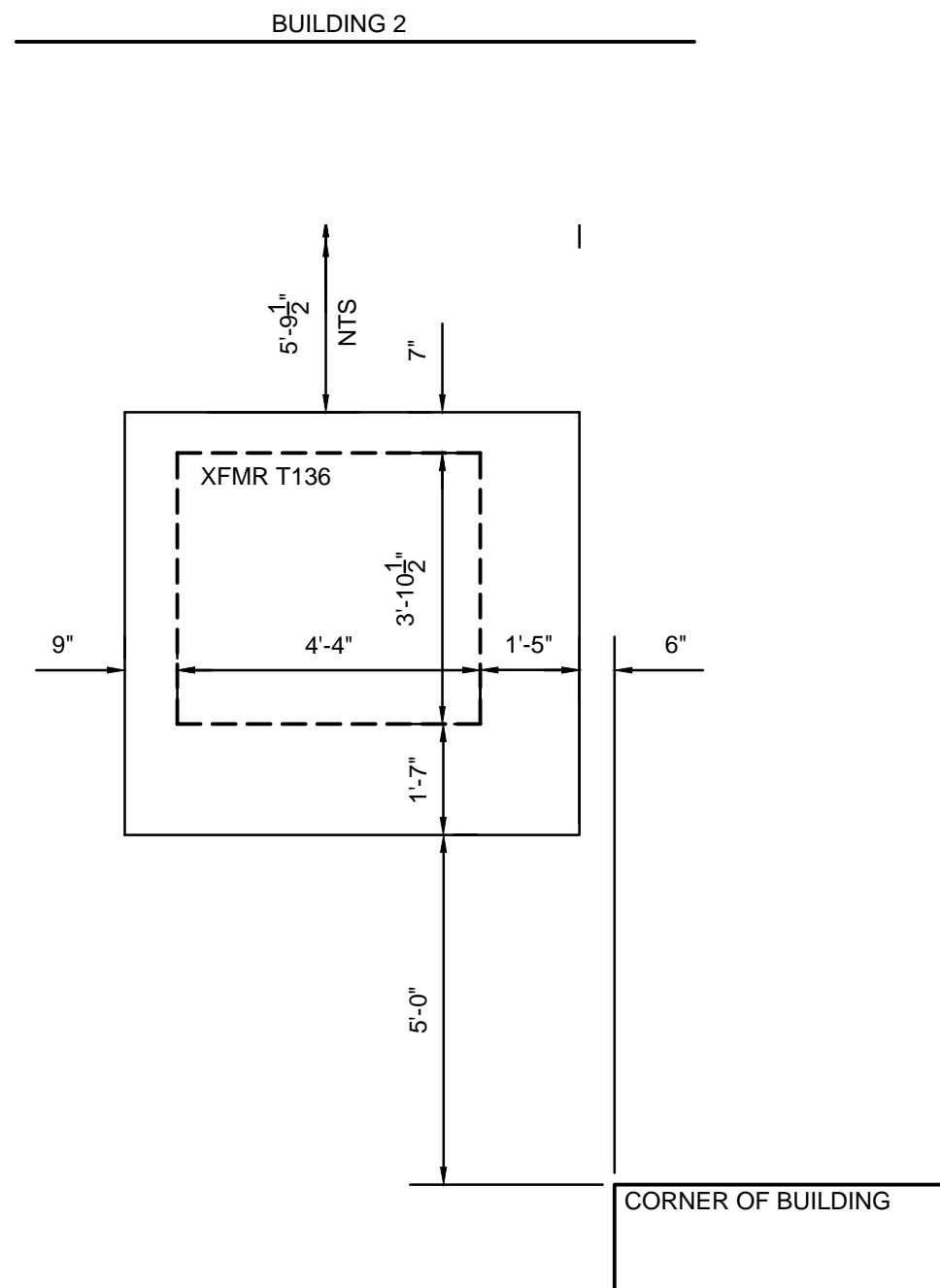
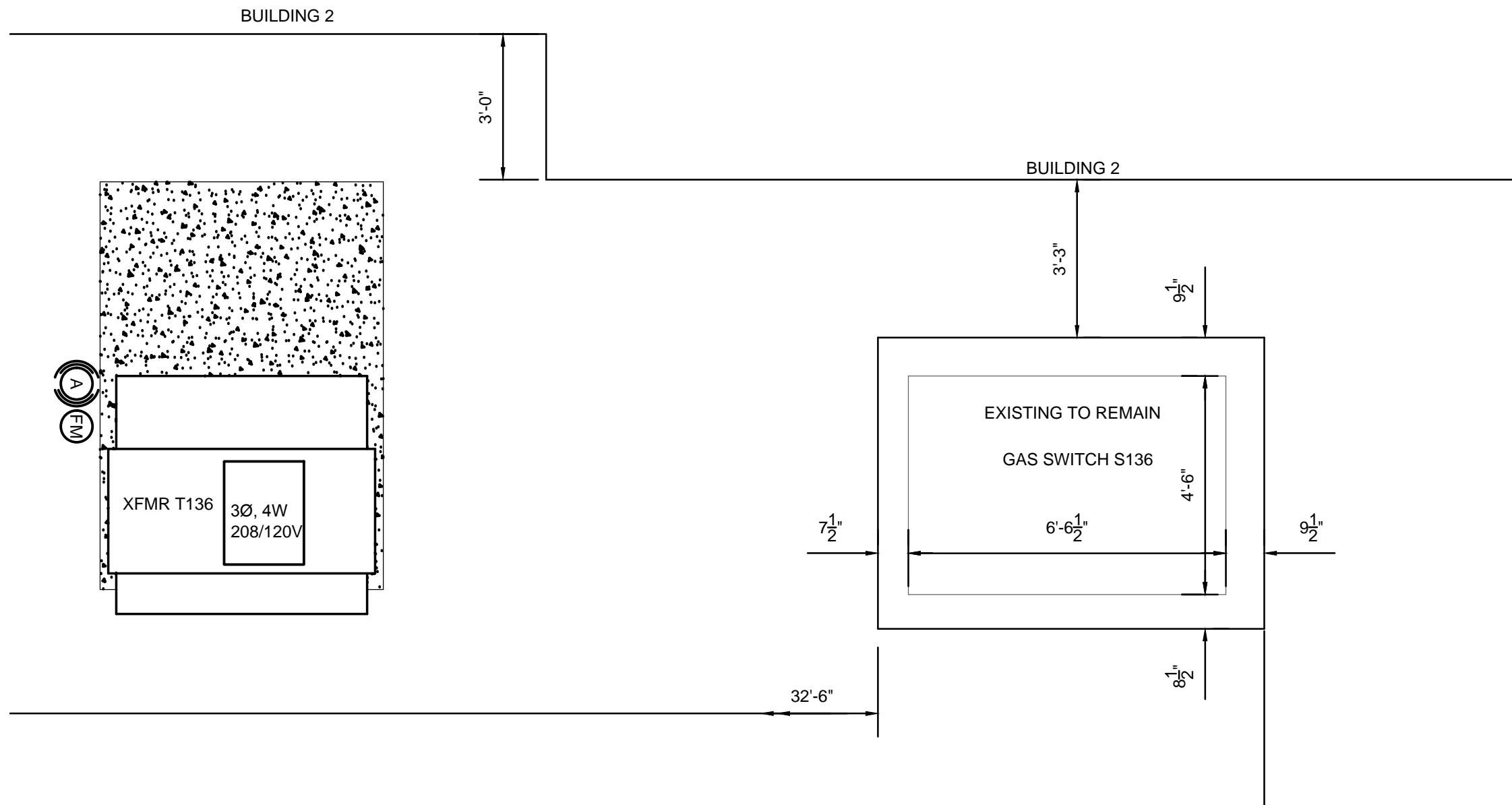


three inches = one foot  
one and one half inches = one foot  
one inch = one foot  
three quarters inch = one foot  
one half inch = one foot  
three eighths inch = one foot  
one quarter inch = one foot  
one eighth inch = one foot

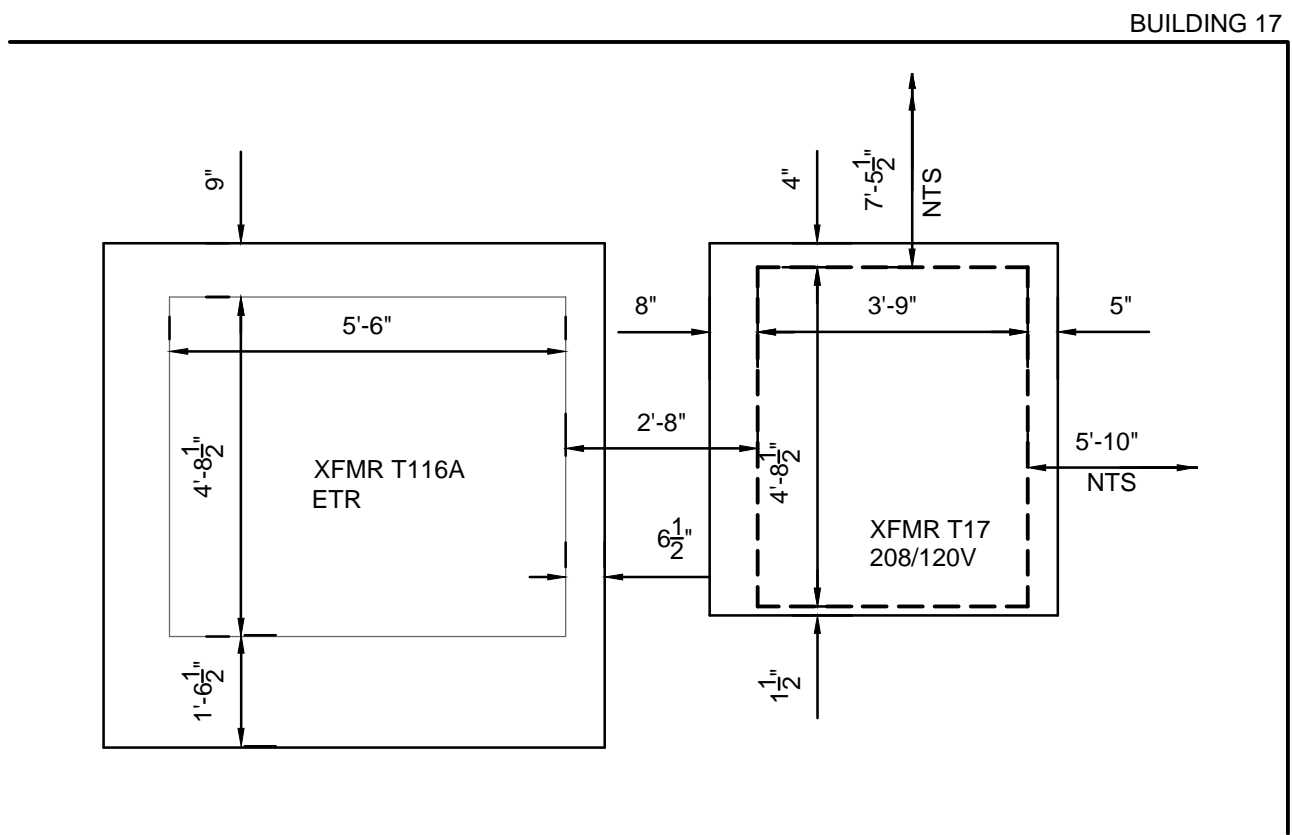
A  
B  
C  
D  
E  
F



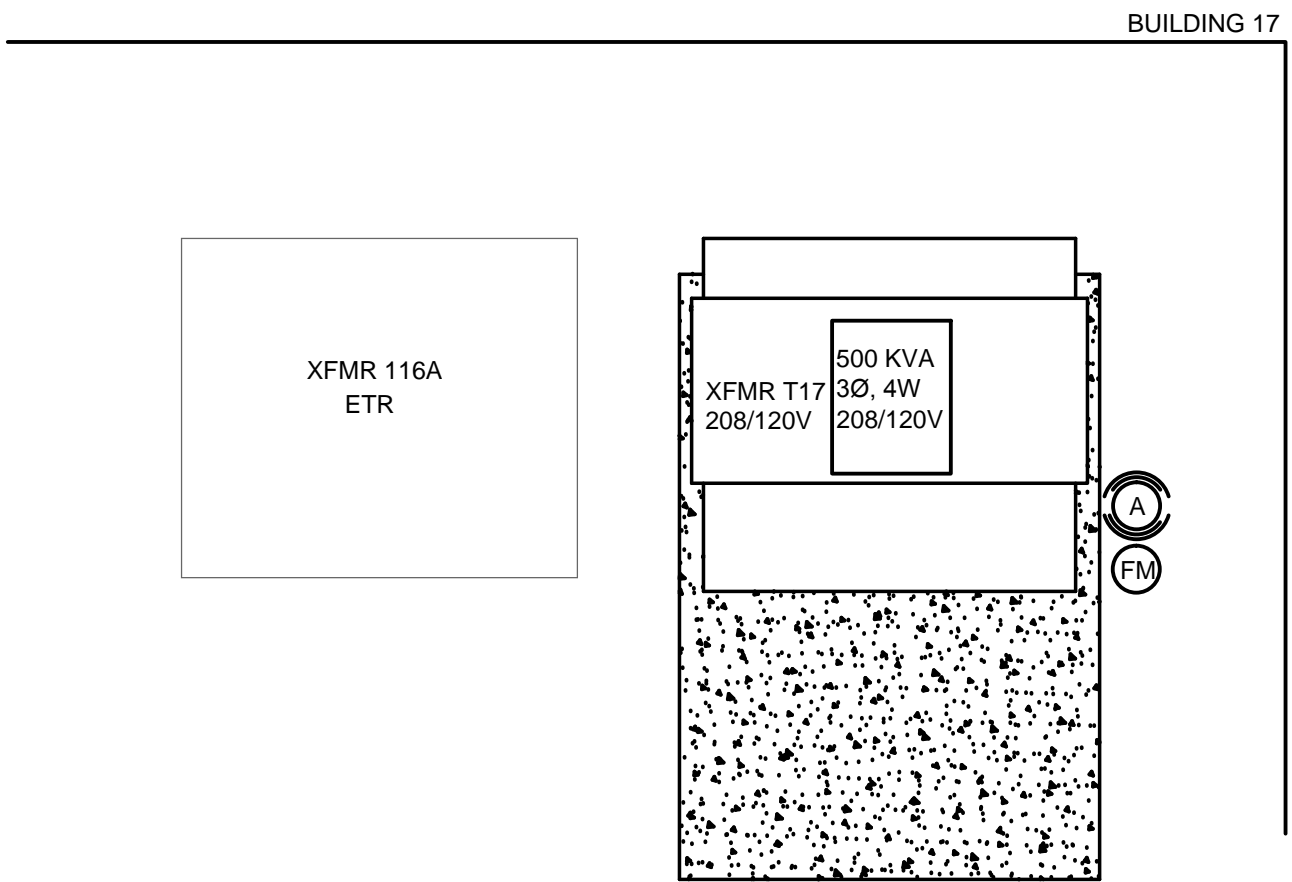
**1 ENLARGED PLAN -XFMR T136 - DEMOLITION**  
SCALE: 3/8" = 1'-0"



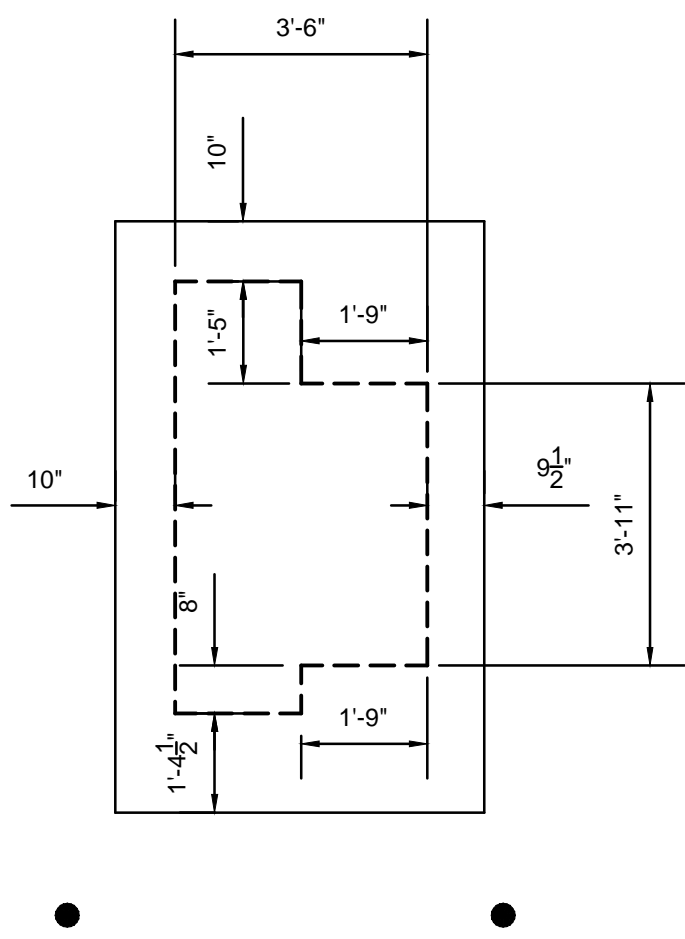
**1A ENLARGED PLAN -XFMR T136 - NEW WORK**  
SCALE: 3/8" = 1'-0"



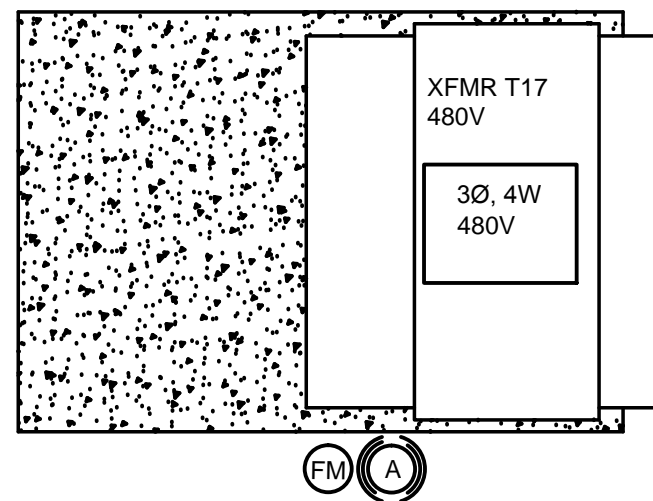
**2 ENLARGED PLAN - XFMR T116A AND XFMR T17-208 - DEMOLITION**  
SCALE: 3/8" = 1'-0"



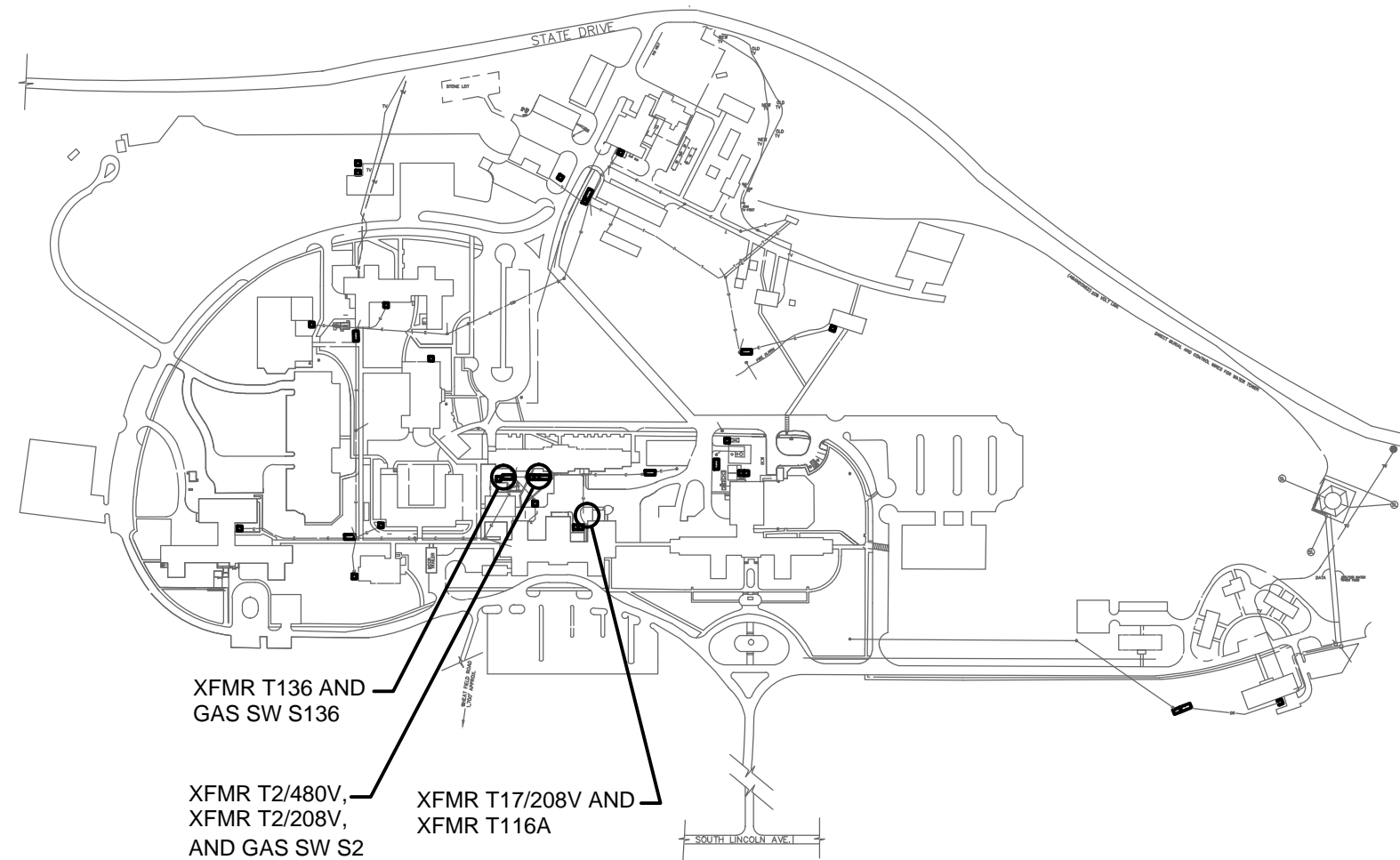
**2A ENLARGED PLAN - XFMR T116A AND XFMR T17-208 - NEW WORK**  
SCALE: 3/8" = 1'-0"



**3 ENLARGED PLAN - XFMR T17/480 - DEMOLITION**  
SCALE: 3/8" = 1'-0"



**3A ENLARGED PLAN - XFMR T17-480V - NEW WORK**  
SCALE: 3/8" = 1'-0"



**KEY PLAN**  
NTS

**GENERAL NOTES:**

- CONTRACTOR SHALL PROVIDE ALL PUMPING EQUIPMENT AND DEWATER ALL MANHOLES. CONTRACTOR SHALL SHOVEL ALL MUD, SILT, DEBRIS OUT OF MANHOLE.
- TESTING SHALL BE PERFORMED ON ALL MEDIUM VOLTAGE CABLES PRIOR TO AND AFTER THE CONNECTIONS ARE MADE.
- ALL NEW ELECTRICAL TRENCHES, DUCT BANKS, AND THE OVERALL INSTALLATION SHALL BE INSPECTED AND TESTED IN ACCORDANCE WITH THE SPECIFICATIONS. PROVIDE ENOUGH NOTIFICATION FOR THE INSPECTING AUTHORITY TO ARRIVE AT THE SITE IN ADEQUATE TIME FOR THE INSPECTION PROCESS TO OCCUR.
- ALL SHUTDOWNS SHALL BE KEPT TO AN ABSOLUTE MINIMUM WITH THE CONTRACTOR PROVIDING ALL REQUIRED BACK UP POWER AND MANPOWER TO ENSURE RESTORATION OF NORMAL POWER.
- THE CONTRACTOR SHALL COORDINATE ACTIVITIES WITH ALL OTHER CONSTRUCTION PROJECTS AT THIS CAMPUS. THE PROJECT SUPERVISOR SHALL ATTEND DAILY CONSTRUCTION MEETINGS WITH ALL THE CONTRACTORS ON SITE FROM 8:30 AM TO 8:45 AM.
- GAS SWITCHES AND TRANSFORMERS SHALL BE PROVIDED WITH LARGE SWEEP PVC COATED GALVANIZED RIGID STEEL 90° ELBOW CONDUITS FROM EACH SWITCH POSITION TO ITS ASSOCIATED MANHOLE
- LANDSCAPING SHALL BE PROVIDED AS FOLLOWS (IN GENERAL):
  - AREAS WITH BOLLARDS AND ARBORVITAE: BOLLARDS SHALL BE MOUNTED AT 5' INTERVALS AT 13' FROM ELECTRICAL EQUIPMENT (IN GRASSY AREAS) AND 4' FROM ELECTRICAL EQUIPMENT WHERE TIGHT QUARTERS TO EXISTING ROADWAYS EXIST. ARBORVITAE SHALL BE PLACED OUTSIDE BOLLARDS AROUND PERIMETER. THE AREA BETWEEN THE ARBORVITAE AND CONCRETE PAD SHALL HAVE LANDSCAPING FABRIC INSTALLED WITH 4" OF 2B ROCK ON TOP OF IT.
  - AREAS WITH ARBORVITAE: ARBORVITAE SHALL BE PLACED AROUND PERIMETER, NO CLOSER THAN 6" TO CONCRETE PAD. THE AREA BETWEEN THE ARBORVITAE AND CONCRETE PAD SHALL HAVE LANDSCAPING FABRIC INSTALLED WITH 4" OF 2B ROCK ON TOP OF IT.
  - AREAS WITHOUT ARBORVITAE: GRASS SHALL BE PROVIDED AROUND NEW PADS AND TO EXTENTS OF EXCAVATION TO MATCH EXISTING SURROUNDING AREA.
- SEE DRAWING E6 FOR ELECTRICAL DETAILS.