

SPECIAL SYSTEMS EQUIPMENT LIST

SYMBOL	DESCRIPTION
	TELEPHONE/DATA OUTLET - MOUNTED 18"(450mm) AFF UNLESS OTHERWISE NOTED
	TELEPHONE/DATA OUTLET - MOUNTED 3"(75mm) ABOVE COUNTER TOP/COUNTER TOP BACK SPLASH
	WORK AREA TELECOMMUNICATION OUTLET WITH 6 PORT FACEPLATES.
	WALL-MOUNTED TELEPHONE OUTLET - MOUNTED 48"(1200mm) AFF UNLESS OTHERWISE NOTED
	DATA OUTLET - MOUNTED 18"(450mm) AFF UNLESS OTHERWISE NOTED
	TV OUTLET - COAX CABLE JACK OUTLET. MOUNTED AT CLOSE PROXIMITY TO TV.
	VIDEO OUTLET - SEE DRAWINGS FOR TYPE - MOUNTED 18"(450mm) AFF UNLESS OTHERWISE NOTED
	CARD READER, M OUNTED 46" AFF UNLESS OTHERWISE NOTED
	SECURITY SURVEILLANCE TELEVISION CAMERA M = MOTION DETECTOR PTZ= MOTION DETECTOR WITH PAN, TILT, AND ZOOM
	TELEPHONE/DATA OUTLET - FLOOR MOUNTED UNLESS OTHERWISE NOTED
	OPEN FRAME RACK
	PUSH PLATE (AUTO OPENING DOOR)
	SECURITY ACCESS, ANNUNCIATOR PANEL
	NURSE CALL DOME LIGHT (SUFFIX INDICATES # OF LAMPS) MOUNTED 6" ABOVE DOOR.
	NURSE CALL SYSTEM EMERGENCY PULL CORD STATION IN BATHROOM, WIRED TO CORRIDOR SIGNAL LIGHT.
	NURSE CALL SYSTEM SINGLE PATIENT STATION WITH PILLOW SPEAKER
	NURSE CALL SYSTEM - DUTY STATION
	NURSE CALL SYSTEM EMERGENCY STATION - PUSH FOR HELP STATION
	PUBLIC ADDRESS SPEAKER - CEILING MOUNTED
	NURSE CALL MASTER STATION MOUNTED ON NURSE'S COUNTERTOP UNLESS OTHERWISE NOTED.
	NURSE CALL DUTY STATION CONSOLE ANNUNCIATOR, AUDIO, VISUAL, DESKTYPE

GENERAL NOTES

GENERAL

- THE TERM "PROVIDE", WHERE USED HEREIN, SHALL MEAN THE SAME AS: SURVEYED, DEVELOPED, DESIGNED, ENGINEERED AND DOCUMENTED BY THE DESIGN PROFESSIONAL, AND FURNISHED, INSTALLED, AND TESTED.
- THE TIP MUST BE INSTALLED IN ACCORDANCE WITH CFM'S MASTER CONSTRUCTION SPECIFICATIONS (PG-18-1) WHICH PROVIDES EQUIPMENT AND SYSTEMS THAT MEET THE DESIGN INTENT IN TERMS OF PERFORMANCE, QUALITY, AND COST.
- EQUIPMENT REFERENCE MANUAL (PG-18-5) SHALL BE USED FOR PLANNING AND DEVELOPING REQUIREMENTS FOR CONTRACTOR PURCHASED AND INSTALLED EQUIPMENT.
- QUANTITY OF CABINETS AND RACKS ALLOCATED WILL SUPPORT THE IT EQUIPMENT NEEDED FOR THE ANTICIPATED NUMBER OF LINES AND PORTS, PLUS BOTH .50 PERCENT EXPECTED EXPANSION AND SPACE FOR ANTICIPATED SYSTEMS REDUNDANCY.
- SERVICES PASSING THROUGH AREAS OF REMODELING AND / OR CONSTRUCTION SHALL BE MAINTAINED THROUGHTOUT THE CONSTRUCTION PERIOD.
- EQUIPMENT AND SYSTEMS INSTALLED SHALL BE FULLY COMPATIBLE AND FUNCTIONAL WITH EXISTING FACILITY COMPONENTS AND SYSTEMS TO WHICH IT INTERFACES.
- CONDUITS INSIDE BUILDING SHALL NOT EXCEED 100FT BETWEEN PULLBOXES. CABLES CONNECTING WORKSTATIONS SHALL NOT BE LONGER THAN 295 FEET (90 M).
- CONDUIT ENCLOSING OPTICAL FIBER CABLING SHALL HAVE A MINIMUM CONDUIT BEND RADIUS OF 10 TIMES THE INTERNAL DIAMETER OF CONDUIT

TELECOMMUNICATIONS

- TELECOMMUNICATION AND SPECIAL TELECOMMUNICATION SYSTEMS ARE DEPENDENT ON ELECTRICAL POWER FOR THEIR 24 X 7 X 365 OPERATION AND FUNCTION. EQUIPMENT SHALL BE CONNECTED TO THE CRITICAL BRANCH OF THE ESSENTIAL ELECTRICAL SYSTEM. EQUIPMENT (OTHER THAN HVAC) SHALL BE BACKED BY AN UPS WITH RUNNING TIME AS REQUIRED IN PSDM REFER TO ELECTRICAL DRAWINGS FOR ELECTRICAL POWER DESIGN.
- ROOMS CONTAINING IT EQUIPMENT SHALL HAVE STATIC-DISSIPATIVE FLOORING REFER TO ARCHITECTURAL DRAWINGS FOR DESIGN.
- CMLPS SHALL BE DIRECTLY CONNECTED TO THE FACILITY'S EXTERNAL FLPS. FLPS CONTRACTOR SHALL PROVIDE A WRITTEN APPROVAL FOR THE CONNECTION OF THE COMMUNICATIONS CLPS TO THE FLPS AND MAKE THAT AUTHORIZATION A PART OF THE SYSTEM'S FINAL APPROVED INSTALLATION DRAWINGS AND SPECIFICATIONS.
- THE TELECOMMUNICATIONS CONTRACTOR IS NOT ALLOWED TO MAKE PENETRATIONS OR MODIFICATIONS TO THE ROOF.
- VACO OI&T SERVICE SHALL PROVIDE ACTIVE Wi-Fi EQUIPMENT TO THE PROJECT SUBCONTRACTOR FOR INSTALLATION. APPROVED WIFI BASED ADD-ON SYSTEMS ARE THE RESPONSIBILITY OF THE FACILITY OI&T SERVICE.
- CONTRACTOR SHALL PROVIDE FLUSH-MOUNTED SINGLE-GANG OUTLET BOXES WITH TWO-PART BASE PLATES AND APPLICABLE WALL DEVICE FACEPLATES AT DRYWALL LOCATIONS (CABLE TO BE INSTALLED BEHIND DRYWALL) AND PROVIDE SURFACE-MOUNTED SINGLE-GANG OUTLET BOXES WITH TWO-PART BASE PLATES AND APPLICABLE WALL DEVICE FACEPLATES AT SOLID WALL LOCATIONS (CABLE TO BE INSTALLED IN PLASTIC WALL MOLD EQUIPPED WITH PROTECTIVE INSULATOR OR SLEEVE)
- DATA ROOM OR CLOSET SHALL HAVE A DRY POWDER EXTINGUISHER, SUITABLE FOR ELECTRICAL FIRES, PROVIDED AND INSTALLED WITHIN THE ROOM
- TELECOMMUNICATIONS ROOMS SHALL BE LOCATED ABOVE THE BASE FLOOD ELEVATION; SHALL NOT BE LOCATED IN PATIENT CARE AREAS; AND SHALL NOT BE LOCATED BENEATH TOILETS, SHOWERS, LABORATORIES, KITCHENS, SINKS, OPEN COURTYARDS, PLANTERS, ROOF DRAIN LEADERS, OR OTHER AREAS WHERE WATER SERVICE IS PROVIDED
- ANY PIPE OR DUCT SYSTEM FOREIGN TO THE TELECOMMUNICATIONS INSTALLATION SHALL NOT ENTER OR PASS THROUGH A ROOM.
- CONTRACTOR SHALL INSTALL CABLE TYPE: 4-PAIR CAT6, IEEE 802.3 100BASE-T UNSHIELDED TWISTED PAIR(UTP) LEVEL 5E/6, 24 AWG PLENUM RATED UNLESS OTHERWISE NOTED.
- TERMINATE PAIRS ACCORDING TO THE T568B WIRING SCHEME. PIN ALL 8 CONDUCTORS. MAXIMUM LINK LENGTH - 90 METERS, CHANNEL LENGTH - 100 METERS
- TWO METER LOOP OF CABLE SHALL BE LEFT WITHIN EACH COMMUNICATIONS ROOM/ENCLOSURE FOR FUTURE MODIFICATIONS. SLACK SHALL BE COILED AND SUPPORTED. 0.5-METER LOOP OF CABLE SHALL BE LEFT IN THE TRUNKING ON THE APPROACH TO EACH NETWORK OUTLET
- CABLE BEND RADII SHALL BE NO LESS THAN EIGHT TIMES THE CABLE DIAMETER OR AS SPECIFIED BY THE CABLE MANUFACTURER; WHICHEVER IS THE GREATER.
- PLENUM CMP, RATED CABLE SHALL BE PROVIDED IN ALL AIR-HANDLING PLENUM LOCATIONS. NON-PLENUM, CM OR CMR, CABLE MAY BE PROVIDED IN ALL OTHER AREAS.
- ELECTRICAL CABLES SHALL NOT RUN PARALLEL WITH UTP CABLES. ELECTRICAL MOTORS AND TRANSFORMER SHALL NOT BE INSTALLED IN PROXIMITY TO UTP CABLES.
- CONTRACTOR SHALL PROVIDE SUFFICIENT CABLE AND INSTALL OUTLETS WITH ABILITY TO RELOCATE WIRELESS ACCESS POINTS BASED ON A PHYSICAL SITE SURVEY AFTER OCCUPATION OF THE FACILITY.

SECURITY

- CONTRACTOR SHALL DIRECT ATTACH ALL HORIZONTAL CABLING AND TERMINATE WITH A FIELD INSTALLABLE PLUG AND THEN CONNECT DIRECTLY TO IP CAMERAS, OR OTHER SECURITY EQUIPMENT AVOIDING A POINT OF FAILURE.
- MOST PATCH CORDS ARE NOT CONSTRUCTED WITH PLENUM-RATED CABLE SHALL NOT BE INSTALL IN A PLENUM SPACE.
- CONTRACTOR TO PROVIDE DATA CIRCUIT PROTECTION MODULES THAT PROVIDE PROTECTION AGAINST OVERVOLTAGE AND OVERCURRENT CONDITIONS AT ALL CABLES THAT ENTER THE FACILITY FROM THE EXTERIOR INCLUDING EQUIPMENT ATTACHED TO THE EXTERIOR WALL OF THE BUILDING (E.G., IP SECURITY CAMERAS). APPROVE ONLY DEVICES RATED FOR POE AT EQUIPMENT USING POE.
- CONTRACTOR TO COORDINATE CAMERA MANUFACTURING REQUIREMENTS FOR INSTALLATION AND CABLING. CONTRACTOR SHALL BE AWARE THAT SOME IP CAMERA MANUFACTURES REQUIRE SHIELDED CABLE TO MAINTAIN THE WARRANTY WHERE THE CAMERA IS INSTALLED OUTDOORS OR WHERE THE NETWORK CABLE IS ROUTED OUTDOORS.
- ALL LOCKS SHALL BE FIELD SELECTABLE FAIL SAFE/FAIL SECURE PER APPENDIX A SECURITY DOOR OPENING MATRIX. IN FAIL SECURE THE LOCK WILL REMAIN SECURE WHEN IN FAIL MODE THOUGH IT SHALL ALWAYS PERMIT EMERGENCY EGRESS FUNCTIONS OF THE LOCK. CONVENTIONAL KEY AND LOCK, SHALL BE PROVIDED TO ALLOW ACCESS FROM THE UNSECURE SIDE. MAGNETIC LOCKS SHALL NOT FAIL SECURE.
- CARD ACCESS SECURITY SYSTEMS MAY BE USED PROVIDED THAT A MECHANICAL KEY RELEASE IS PROVIDED PER FIRE PROTECTION DESIGN MANUAL 2015.

CLC SPECIFIC FUNCTIONS/REQUIREMENTS

- NURSE CALL, SECURITY SYSTEMS, AND FILES FUNCTIONS WILL USE AND BE HOUSED IN THE OFFICE PER CLCDG.
- WEARABLE COMMUNICATION DEVICES SHALL BE PROVIDED TO HELP STAFF RESPOND TO RESIDENT AND STAFF REQUESTS FOR ASSISTANCE, ALLOWING STAFF MEMBERS TO COMMUNICATE FROM MULTIPLE REMOTE LOCATIONS RATHER THAN A SINGLE CENTRAL STATION
- TELEPHONE SHALL BE AVAILABLE AT EACH RESIDENT'S BEDSIDE, IN ADDITION, PROVIDE ONE PRIVATE TELEPHONE PER RESIDENT HOME
- TELEPHONE OUTLETS SHALL BE PROVIDED AT EACH STAFF WORKSTATION OR ROOM.
- COMPUTER AND ELECTRICAL OUTLETS SHALL BE AVAILABLE AT ALL WORK STATIONS
- A STAFF CALL SYSTEM SHALL BE PROVIDED FOR ALL RESIDENT BEDROOMS AND OTHER SPACES USED BY RESIDENTS.
- CABLE AND ELECTRICAL OUTLETS FOR TELEVISION USE SHALL BE PROVIDED AT EACH RESIDENT BED AREA.
- PUBLIC ADDRESS SYSTEMS ARE TOTALLY SEPARABLE (NON-LIFE SAFETY), AND SHOULD NOT BE CONFUSED WITH FIRE ALARM SYSTEMS. THE USE OF A PUBLIC ADDRESS SYSTEM FOR REGULAR PAGING OR STAFF COMMUNICATIONS IS TO BE AVOIDED.
- CONTROL ACCESS SHALL BE PROVIDED TO AREAS NOT SPECIFICALLY DESIGNED FOR USE BY RESIDENTS AND TO THOSE SPACES THAT REQUIRE COGNITIVE JUDGMENT INCLUDING LAUNDRY AND MECHANICAL SPACES, SOILED LINEN, AND OFFICE EQUIPMENT AS SPECIFIED ON THE PLANS
- ALL NEW SPECIAL SYSTEM TO INTERFACE WITH EXISTING SYSTEM. COORDINATE WITH COR AND OI&T FOR SYSTEM INTERFACE. ACCEPTABLE MANUFACTURERS: JUSTCO TACERA IP NURSE CALL; CODE BLUE SYSTEMS; PAMASS NOTIFICATION SYSTEM- VALCOMP/LYNX SECURITY, OR EQUAL. POC: STERLING COMMUNICATION TECHNOLOGIES

SPECIAL SYSTEM STANDARDS

INDUSTRY STANDARDS:

- AMERICAN NATIONAL STANDARDS INSTITUTE (ANSI)
- ELECTRONIC INDUSTRIES ALLIANCE (EIA)
- TELECOMMUNICATIONS INDUSTRY ASSOCIATION (TIA)
- BUILDING INDUSTRY CONSULTING SERVICE INTERNATIONAL (BCSI)
- TELECOMMUNICATIONS DISTRIBUTION METHODS MANUAL FEBRUARY 2016 (TDMM)
- PHYSICAL SECURITY DESIGN MANUAL FOR VA LIFE-SAFETY PROTECTED FACILITIES JANUARY 2015 (PSDM)

DESIGN STANDARDS:

- COMMUNITY LIVING CENTERS' DESIGN GUIDE 2011 (CLCDG)
- ACCESS NEEDS PROVIDED BY APPLICATION OF ADA, ABA, AND VA PG 18-13 DESIGN STANDARDS

SPECIAL SYSTEM SCOPE

VOICE SERVICE SHALL BE VOIP, HOWEVER THERE SHALL ALWAYS BE A QUANTITY OF POTTS COPPER PAIRS TO BE DISTRIBUTED FROM MCR TO EACH OF THE TRS. OIT TO DETERMINE.

TABLE CELLS WITH "YES" MARKING INDICATES SYSTEM IS PART OF SCOPE:

OSP COMMUNICATIONS SYSTEMS AND EQUIPMENT:	PART OF SCOPE:
DATA: VOIP	YES
DATA: LAN	YES
DATA: WAN	YES

FMS COMMUNICATIONS SYSTEMS AND EQUIPMENT:	PART OF SCOPE:
NURSE CALL AND/OR CODE BLUE	YES
PACS	-
TELEVISION (MASTER ANTENNA [MATV])	YES
COMMUNITY ANTENNA [CATV]	-
CLOSED CIRCUIT [CCTV] [FOR EDUCATION] & SATELLITE TV [SATV]	-
RADIO (PAGING [CODE BLUE, EMERGENCY & ROUTINE])	-
MICROWAVE, SATELLITE RADIO/TELEPHONE & RADIO ENTERTAINMENT	-
PUBLIC ADDRESS:	-
*OVERHEAD PAGING,	-
*MASS NOTIFICATION,	YES
*INTERCOMMUNICATIONS (INTERCOM))	-
PHYSICAL SECURITY MANAGEMENT:	-
*ACCESS CONTROL	YES
*MOTION INTRUSION DETECTION	YES
*DURESS AND/OR PANIC ALARM	-
*SECURITY SURVEILLANCE TELEVISION [SSTV])	YES
PATIENT, STAFF AND ASSET MONITORING (MEDICAL TELEMTRY, PATIENT/STAFF LOCATION, AND CARDIAC)	YES
ENERGY MANAGEMENT	-
EMERGENCY (FIRE ALARM/MASS NOTIFICATION, POLICE, AND DISASTER)	-

ABB

GENERAL NOTES

1. SEE SHEET ET001

KEY NOTES

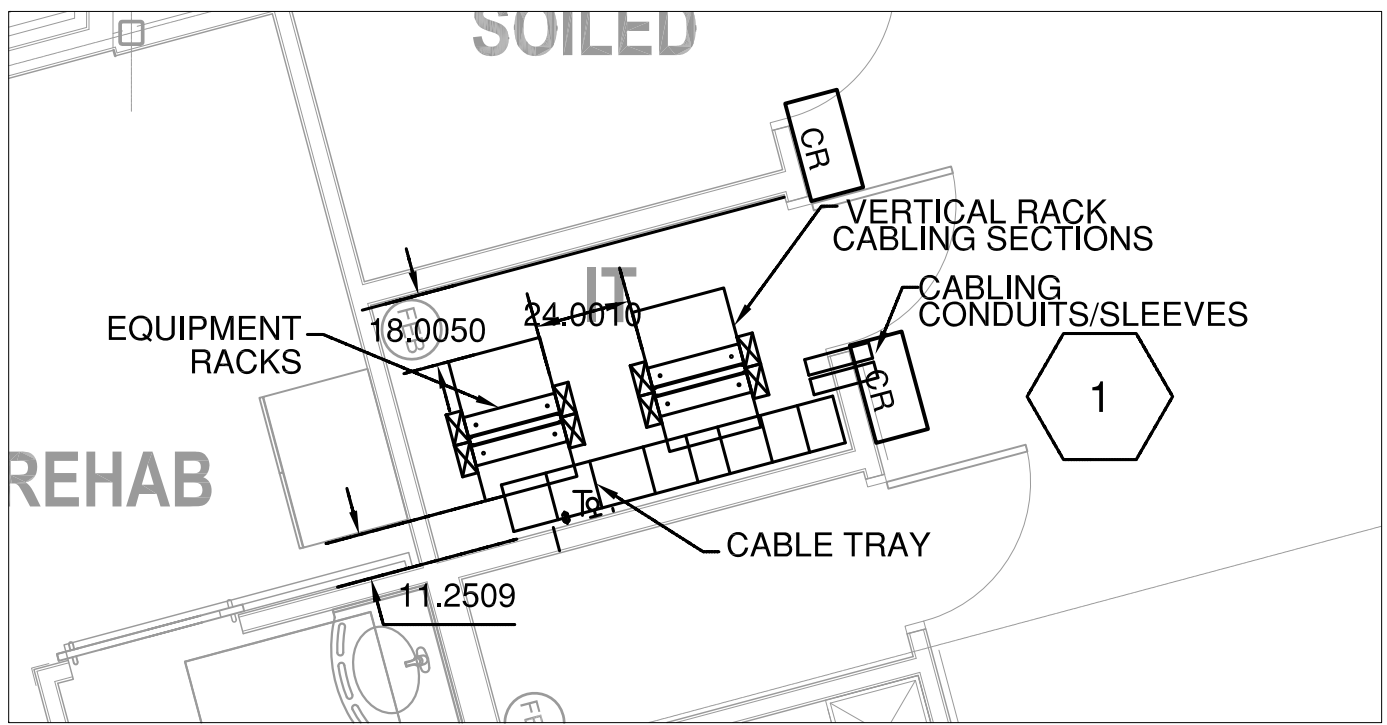
1. INSTALL MAGNETIC LOCK FOR PATIENT WANDER PREVENTION SYSTEM AND REQUEST TO EXIT. COORDINATE WITH FIRE ALARM SYSTEM AND DOOR HARDWARE FOR OPERATION, ALARM AND OVERRIDE
2. DATA OUTLET TO BE INSTALLED IN THE KITCHEN CLOSED TO REFRIGERATOR FOR EQUIPMENT TEMPERATURE TRACK SYSTEM. VA IS RESPONSIBLE FOR ALL EQUIPMENT AND EQUIPMENT'S SYSTEM SELECTION
3. NURSE CALL PREFER VENDOR: AUSTCO TACERA IP OR EQUAL. MATCH THE NEWLY INSTALLED SYSTEM ON CAMPUS.
4. MASS NOTIFICATION PREFER VENDOR: VALCOMP/LYNX SECURITY OR EQUAL. MATCH THE NEWLY INSTALLED SYSTEM ON CAMPUS.
5. ACCESS CONTROL: COMPATIBLE WITH C-CURE 9000 ACCESS CONTROL PLATFORM (TYCO PRODUCT) WHICH IS CURRENTLY INSTALLED AT CHEYENNE VAMC. CARD READER SHALL BE HID GLOBAL 920NHR OR EQUAL. MAXIMUM DISTANCE FROM CONTROLLER TO DOOR LOCK IS 250 FEET (76 M) WITH NO. 18 AWG WIRE, AND 500 FEET (152 M) WITH NO. 16 AWG WIRE.
6. VIDEO SURVEILLANCE: COMPATIBLE WITH VICTOR VIDEO PLATFORM (TYCO PRODUCT) CURRENTLY INSTALLED AT CHEYENNE VAMC
7. ALL CAMERAS TO BE IP CAMERAS. VA WILL PROVIDE THE POE 802.3AF NETWORK SWITCHES
8. INSTALLED ABOVE SUSPENDED CEILINGS USING WIRE BASKET CABLE TRAY. MINIMUM SIZE OF WIRE BASKET TRAY SHALL BE 150 MM [6 IN.] WIDE, WITH 40 MM [1.5 IN.] HIGH SIDEWALLS, WITH INTERNAL PARTITIONS OR APPROVED CABLE BUNDLING.
9. PROVIDE THREE CONDUITS (ABLE TO CONTAIN UP TO 100 CATEGORY 6 CABLES) FOR SECTIONS OF THE BUILDING WITH GYPBOARD CEILING . PROVIDE A PULLBOX (INSIDE) AFTER TWO 90-DEGREE BENDS OR AN ACCUMULATION OF 120DEGREES OF TOTAL PATHWAY DEVIATIONS FROM A STRAIGHT LINE.
10. COORDINATE WITH COR FOR VA TO PROGRAM AND CONFIGURE WIRELESS ACCESS POINTS AND REDUNDANT WIRELESS CONTROLLERS. VA SHALL FURNISH AND INSTALL BY PROJECT AND PROVIDE CENTRALIZED AUTHENTICATION AND SECURITY APPLIANCES, OR LATEST EQUIVALENT, TO SUPPORT THE VA'S WIRELESS NETWORK WITHIN THE FACILITY.
11. THE RESIDENT CALLS ARE TO RING FROM THE EXPANSION TO THE NEW NURSE CALL SYSTEMS. CODE BLUE CALL ARE TO INTERFACE WITH THE CENTRAL CODE BLUE SYSTEM TO BE ABLE TO PAGE THE CODE BLUE TEAM AND THROUGHOUT THE FACILITY.
12. RUN NEW MULTIMODE FIBER FROM EXISTING MAIN COMPUTER ROOM IN EXISTING BUILDING. COORDINATE WITH VA O&T PERSONNEL FOR LOCATION OF SPARE CONNECTION POINT ON EXISTING FIBER OPTIC PATCH PANEL. REFER TO ET102 FOR EXISTING LOCATION OF FIBER.

ROOM SCHEDULE	
NAME	NUMBER

BASEMENT	
MECHANICAL	001
ELECTRICAL	002
IT	003
FIRST FLOOR	
ENTRY VESTIBULE	C-001
CORRIDOR	C-002
SOILED	C1-148
IT ROOM	C1-149
ELEC	C1-150
HOUSEKEEPING (HAC)	C1-151
REHAB	C1-152
REHAB TLT	C1-152A
REHAB COMMON SPACE	C1-158
BARIATRIC	C1-163
BARIATRIC TLT	C1-163A
NURSE STATION	C1-164
NURSE OFFICE	C1-165
MEDS	C1-166
VISITOR TLT	C1-167
VISITOR TLT	C1-168
KITCHEN AND SERVERY	C1-169
MULTIPURPOSE/ACTIVITY	C1-170
STORAGE	C1-171
KITCHEN STOR	C1-171A
CLEAN UTILITY	C1-172
NURSE TLT	C1-173
BATHING ROOM	C1-174
BATHING TLT	C1-174A
NURSE STATION	C1-175

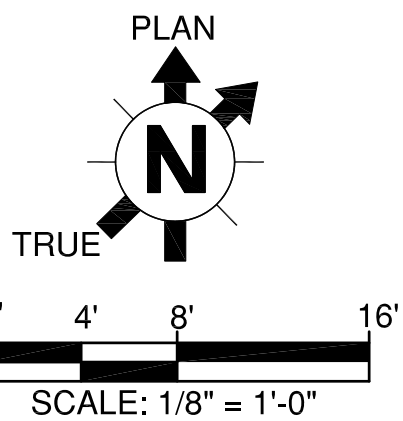
ROOM SCHEDULE	
NAME	NUMBER

RESIDENT	C1-176
RESIDENT TLT	C1-176A
RESIDENT	C1-177
RESIDENT TLT	C1-177A
RESIDENT	C1-178
RESIDENT TLT	C1-178A
RESIDENT	C1-179
RESIDENT TLT	C1-179A
RESIDENT	C1-180
RESIDENT TLT	C1-180A
RESIDENT	C1-181
RESIDENT TLT	C1-181A
RESIDENT	C1-182
RESIDENT TLT	C1-182A
RESIDENT COMMON SPACE	C1-183
RESIDENT	C1-185
RESIDENT TLT	C1-185A
RESIDENT	C1-186
RESIDENT TLT	C1-186A
RESIDENT	C1-187
RESIDENT TLT	C1-187A
RESIDENT	C1-188
RESIDENT TLT	C1-188A
BARIATRIC	C1-189
BARIATRIC TLT	C1-189A
HOUSEKEEPING	C1-190
PENTHOUSE	
AHU	U-001




2 ENLARGED TELECOMMUNICATIONS ROOM
ET101 SCALE: 1/4" = 1'-0"

1 1ST FLOOR TELECOMMUNICATIONS PLAN
ET101 SCALE: 1/8" = 1'-0"



CONSTRUCTION DOCUMENTS

		CONSULTANT:	CONSULTANT:	ARCHITECT/ENGINEERS:	Drawing Title		Project Title		Project Number		Office of Construction and Facilities Management
					1ST FLOOR TELECOMMUNICATIONS PLAN		COMMUNITY LIVING CENTER		442-12-357		
									Building Number		
									COWBOY		
									Drawing Number		
									ET101		
RFI #4	12 APRIL 2017			<div><div>11011 SOUTH PINES PEAK DRIVE #202 PARKER, COLORADO 80138 PH: 303.843.9922 WWW.AES-GRP.COM</div></div>	Approved: Project Director		Location		Drawing Number		
RFI #3	31 MARCH 2017				SYLVIE RUPP - CFM DIRECTOR		CHEYENNE, WYOMING		ET101		
RFI #2	24 MARCH 2017				FACILITIES/ENGINEERING		Checked		Dwg. of		
REQUEST FOR INFORMATION #1 (RFI #1)	16 MARCH 2017				PHONE: 307-778-7550x7267		RJO				
Revisions:	Date				FAX: 307-287-9725		Drawn				
						DKS					

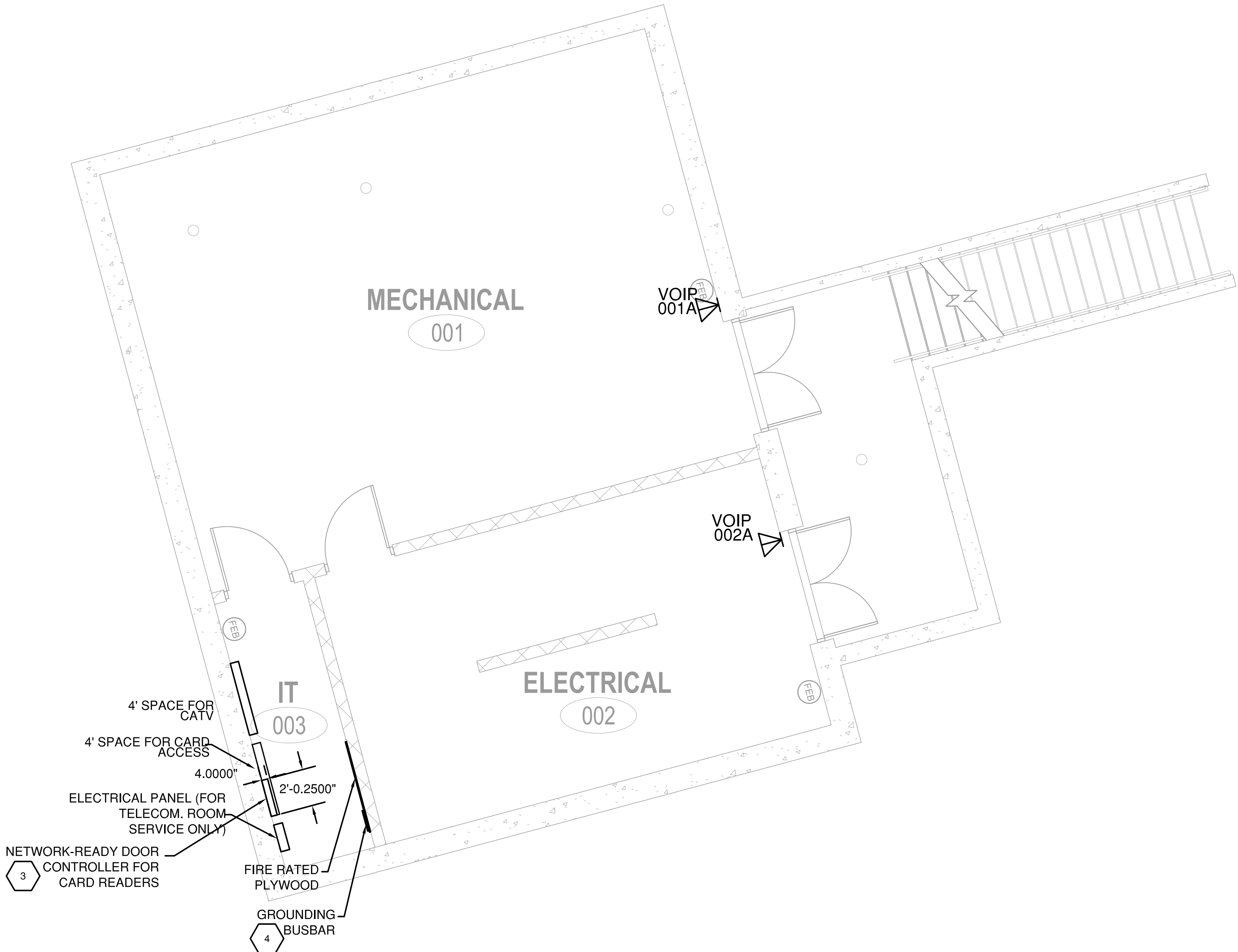
--	--	--	--	--	--	--	--	--	--	--	--	--	--	--	--	--	--	--	--	--	--	--	--	--	--	--	--	--	--	--	--	--	--	--	--	--	--	--	--	--	--	--	--	--	--	--	--	--	--	--	--	--	--	--	--	--	--	--	--	--	--	--	--	--	--	--	--	--	--	--	--	--	--	--	--	--	--	--	--	--	--	--	--	--	--	--	--	--	--	--	--	--	--	--	--	--	--	--	--	--	--	--	--	--	--	--	--	--	--	--	--	--	--	--	--	--	--	--	--	--	--	--	--	--	--	--	--	--	--	--	--	--	--	--	--	--	--	--	--	--	--	--	--	--	--	--	--	--	--	--	--	--	--	--	--	--	--	--	--	--	--	--	--	--	--	--	--	--	--	--	--	--	--	--	--	--	--	--	--	--	--	--	--	--	--	--	--	--	--	--	--	--	--	--	--	--	--	--	--	--	--	--	--	--	--	--	--	--	--	--	--	--	--	--	--	--	--	--	--	--	--	--	--	--	--	--	--	--	--	--	--	--	--	--	--	--	--	--	--	--	--	--	--	--	--	--	--	--	--	--	--	--	--	--	--	--	--	--	--	--	--	--	--	--	--	--	--	--	--	--	--	--	--	--	--	--	--	--	--	--	--	--	--	--	--	--	--	--	--	--	--	--	--	--	--	--	--	--	--	--	--	--	--	--	--	--	--	--	--	--	--	--	--	--	--	--	--	--	--	--	--	--	--	--	--	--	--	--	--	--	--	--	--	--	--	--	--	--	--	--	--	--	--	--	--	--	--	--	--	--	--	--	--	--	--	--	--	--	--	--	--	--	--	--	--	--	--	--	--	--	--	--	--	--	--	--	--	--	--	--	--	--	--	--	--	--	--	--	--	--	--	--	--	--	--	--	--	--	--	--	--	--	--	--	--	--	--	--	--	--	--	--	--	--	--	--	--	--	--	--	--	--	--	--	--	--	--	--	--	--	--	--	--	--	--	--	--	--	--	--	--	--	--	--	--	--	--	--	--	--	--	--	--	--	--	--	--	--	--	--	--	--	--	--	--	--	--	--	--	--	--	--	--	--	--	--	--	--	--	--	--	--	--	--	--	--	--	--	--	--	--	--	--	--	--	--	--	--	--	--	--	--	--	--	--	--	--	--	--	--	--	--	--	--	--	--	--	--	--	--	--	--	--	--	--	--	--	--	--	--	--	--	--	--	--	--	--	--	--	--	--	--	--	--	--	--	--	--	--	--	--	--	--	--	--	--	--	--	--	--	--	--	--	--	--	--	--	--	--	--	--	--	--	--	--	--	--	--	--	--	--	--	--	--	--	--	--	--	--	--	--	--	--	--	--	--	--	--	--	--	--	--	--	--	--	--	--	--	--	--	--	--	--	--	--	--	--	--	--	--	--	--	--	--	--	--	--	--	--	--	--	--	--	--	--	--	--	--	--	--	--	--	--	--	--	--	--	--	--	--	--	--	--	--	--	--	--	--	--	--	--	--	--	--	--	--	--	--	--	--	--	--	--	--	--	--	--	--	--	--	--	--	--	--	--	--	--	--	--	--	--	--	--	--	--	--	--	--	--	--	--	--	--	--	--	--	--	--	--	--	--	--	--	--	--	--	--	--	--	--	--	--	--	--	--	--	--	--	--	--	--	--	--	--	--	--	--	--	--	--	--	--	--	--	--	--	--	--	--	--	--	--	--	--	--	--	--	--	--	--	--	--	--	--	--	--	--	--	--	--	--	--	--	--	--	--	--	--	--	--	--	--	--	--	--	--	--	--	--	--	--	--	--	--	--	--	--	--	--	--	--	--	--	--	--	--	--	--	--	--	--	--	--	--	--	--	--	--	--	--	--	--	--	--	--	--	--	--	--	--	--	--	--	--	--	--	--	--	--	--	--	--	--	--	--	--	--	--	--	--	--	--	--	--	--	--	--	--	--	--	--	--	--	--	--	--	--	--	--	--	--	--	--	--	--	--	--	--	--	--	--	--	--	--	--	--	--	--	--	--	--	--	--	--	--	--	--	--	--	--	--	--	--	--	--	--	--	--	--	--	--	--	--	--	--	--	--	--	--	--	--	--	--	--	--	--	--	--	--	--	--	--	--	--	--	--	--	--	--	--	--	--	--	--	--	--	--	--	--	--	--	--	--	--	--	--	--	--	--	--	--	--	--	--	--	--	--	--	--	--	--	--	--	--	--	--	--	--	--	--	--	--	--	--	--	--	--	--	--	--	--	--	--	--	--	--	--	--	--	--	--	--	--	--	--	--	--	--	--	--	--	--	--	--	--	--	--	--	--	--	--	--	--	--	--	--	--	--	--	--	--	--	--	--	--	--	--	--	--	--	--	--	--	--	--	--	--	--	--	--	--	--	--	--	--	--	--	--	--	--	--	--	--	--	--	--	--	--	--	--	--	--	--	--	--	--	--	--	--	--	--	--	--	--	--	--	--	--	--	--	--	--	--	--	--	--	--	--	--	--	--	--	--	--	--	--	--	--	--	--	--	--	--	--	--	--	--	--	--	--	--	--	--	--	--	--	--	--	--	--	--	--	--	--	--	--	--	--	--	--	--	--	--	--	--	--	--	--	--	--	--	--	--	--	--	--	--	--	--	--	--	--	--	--	--	--	--	--	--	--	--	--	--	--	--	--	--	--	--	--	--	--	--	--	--	--	--	--	--	--	--	--	--	--	--	--	--	--	--	--	--	--	--	--	--	--	--	--	--	--	--	--	--	--	--	--	--	--	--	--	--	--	--	--	--	--	--	--	--	--	--	--	--	--	--	--	--	--	--	--	--	--	--	--

GENERAL NOTES

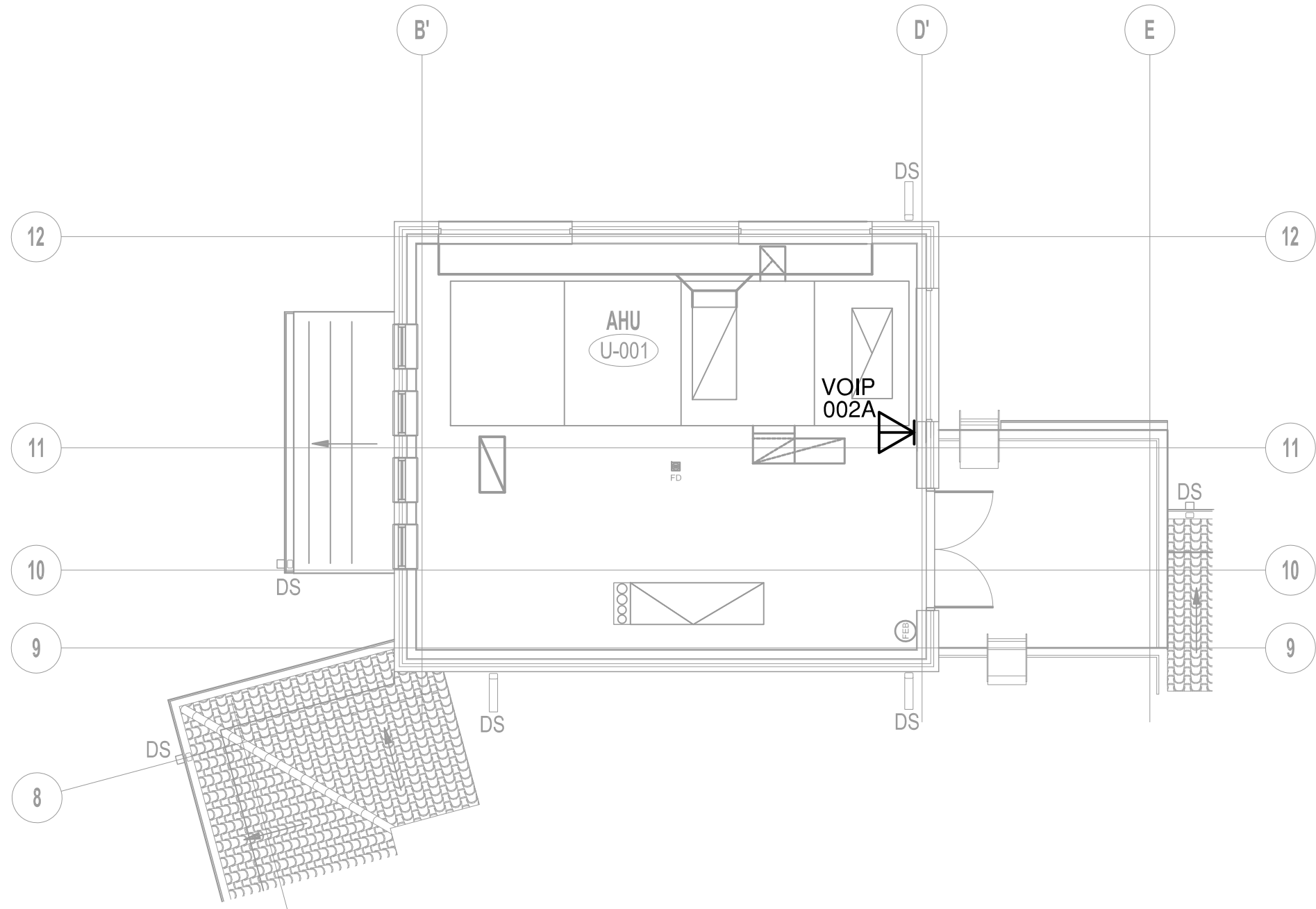
SEE SHEET ET001

KEY NOTES

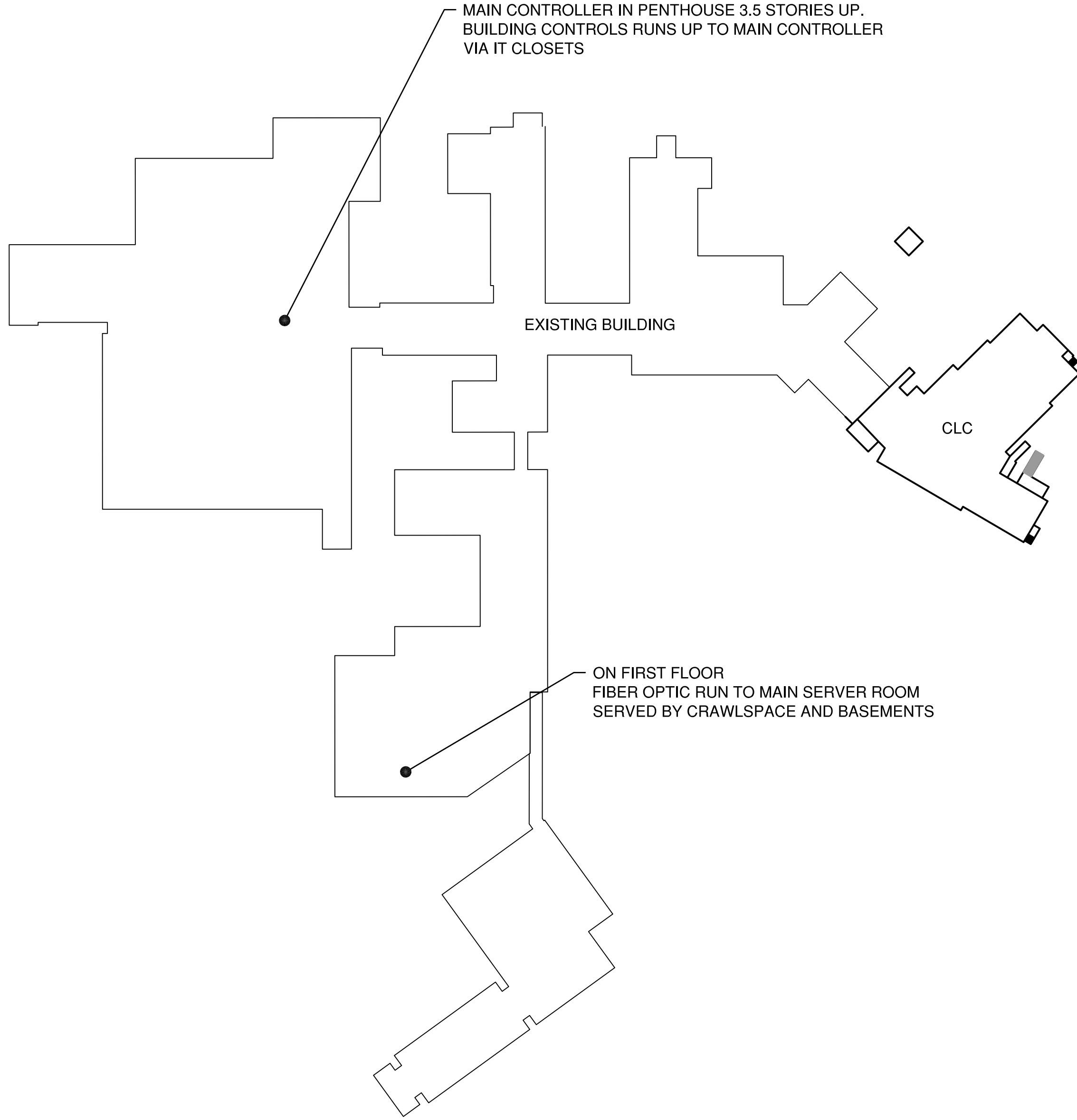
1. INFORMATION SYSTEM SUPPORTING PACS , HEAD-END EQUIPMENT SERVER, WORKSTATIONS, NETWORK SWITCHES, ROUTERS AND CONTROLLERS SHALL CC FIPS 200 REQUIREMENTS
2. CONTRACTOR TO ENSURE THAT ALL EQUIPMENT AND MATERIALS FOR THE SYS' COMPATIBLE TO ENSURE CORRECT OPERATION AS OUTLINED IN FIPS 201, MARC HSPD-12
3. CONTROLLERS SHALL TRANSMIT ALARMS, STATUS CHANGES, AND OTHER DATA CENTRAL STATION WHEN COMMUNICATIONS CIRCUITS ARE OPERABLE. IF COMMUNICATIONS ARE NOT AVAILABLE, CONTROLLERS SHALL FUNCTION IN A STAND-ALONE MODE AND OPERATIONAL DATA, INCLUDING THE STATUS AND AL NORMALLY TRANSMITTED TO THE CENTRAL STATION, SHALL BE STORED FOR L/ TRANSMISSION TO THE CENTRAL STATION. STORAGE CAPACITY FOR THE LATE! EVENTS SHALL BE PROVIDED AT EACH CONTROLLER.
4. EXTEND BACKBONE CABLE FROM SIGNAL GROUND BUS TO SIGNAL GROUND TI EQUIPMENT ROOM



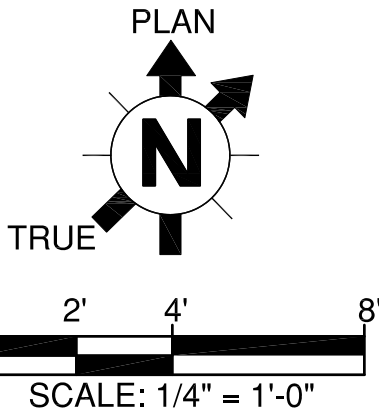
1 BASEMENT TELECOMMUNICATIONS PLAN
ET102 SCALE: 1/4" = 1'-0"




3 PENTHOUSE TELECOMMUNICATIONS PLAN
ET102 SCALE: 1/4" = 1'-0"

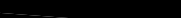


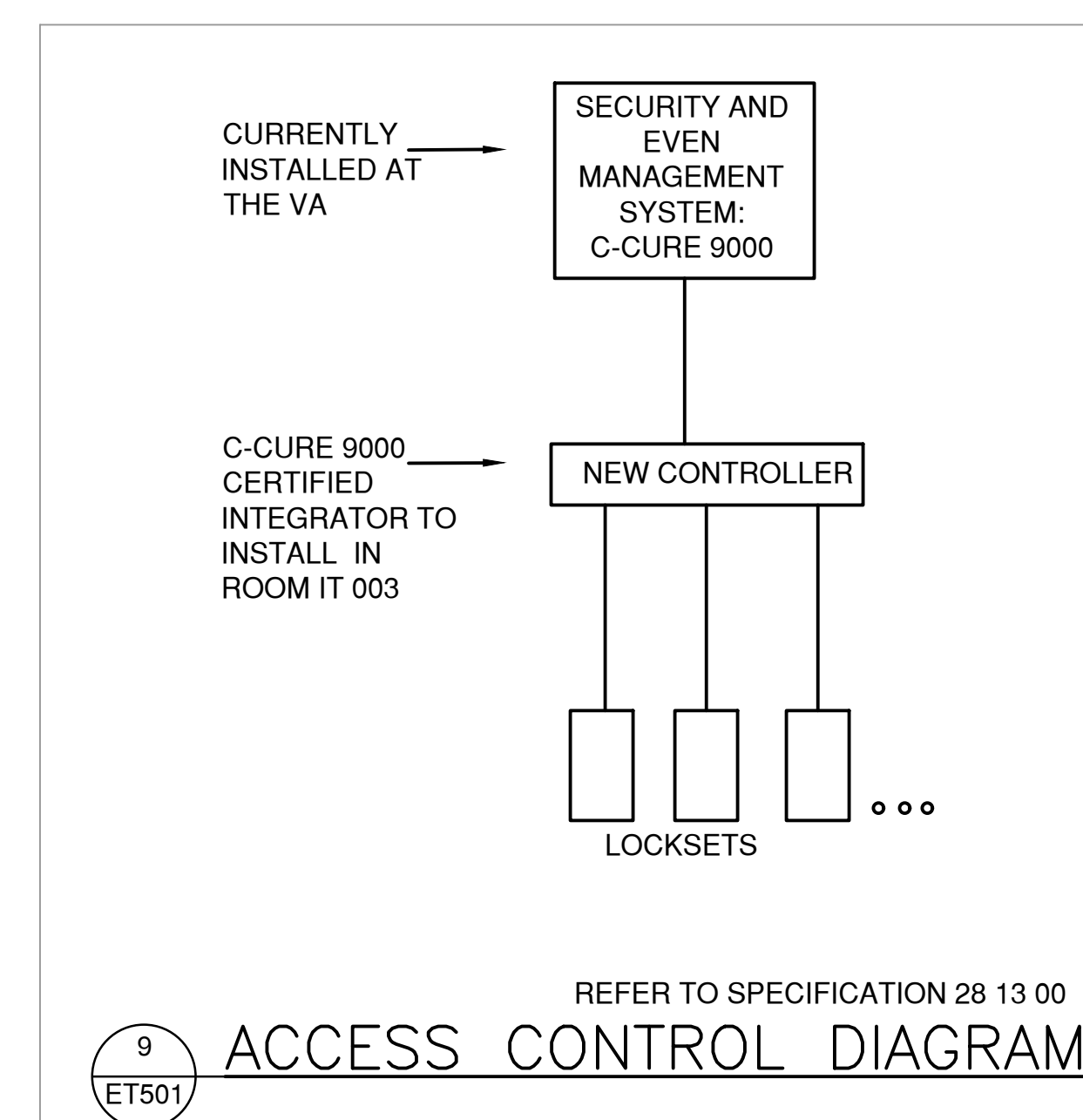
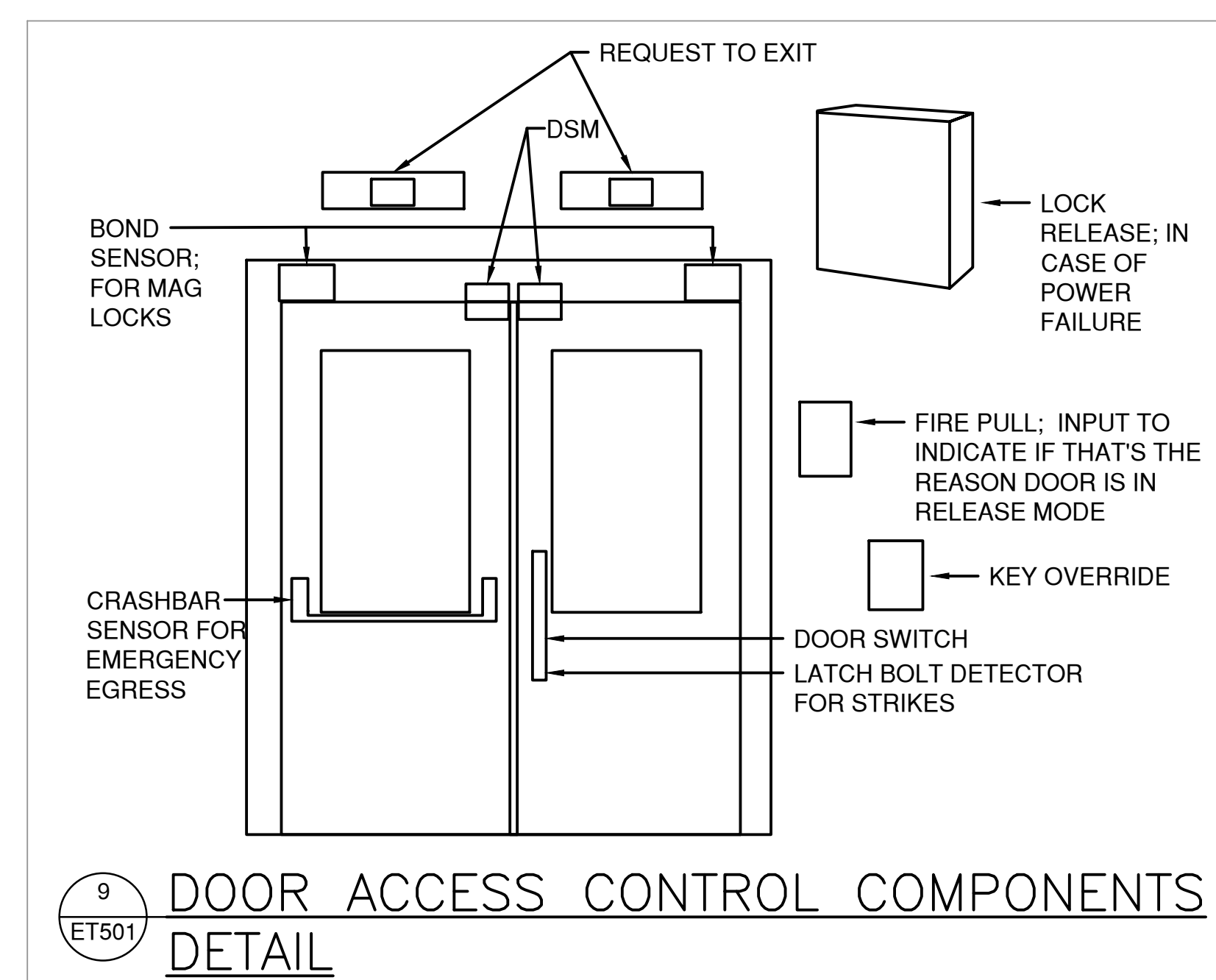
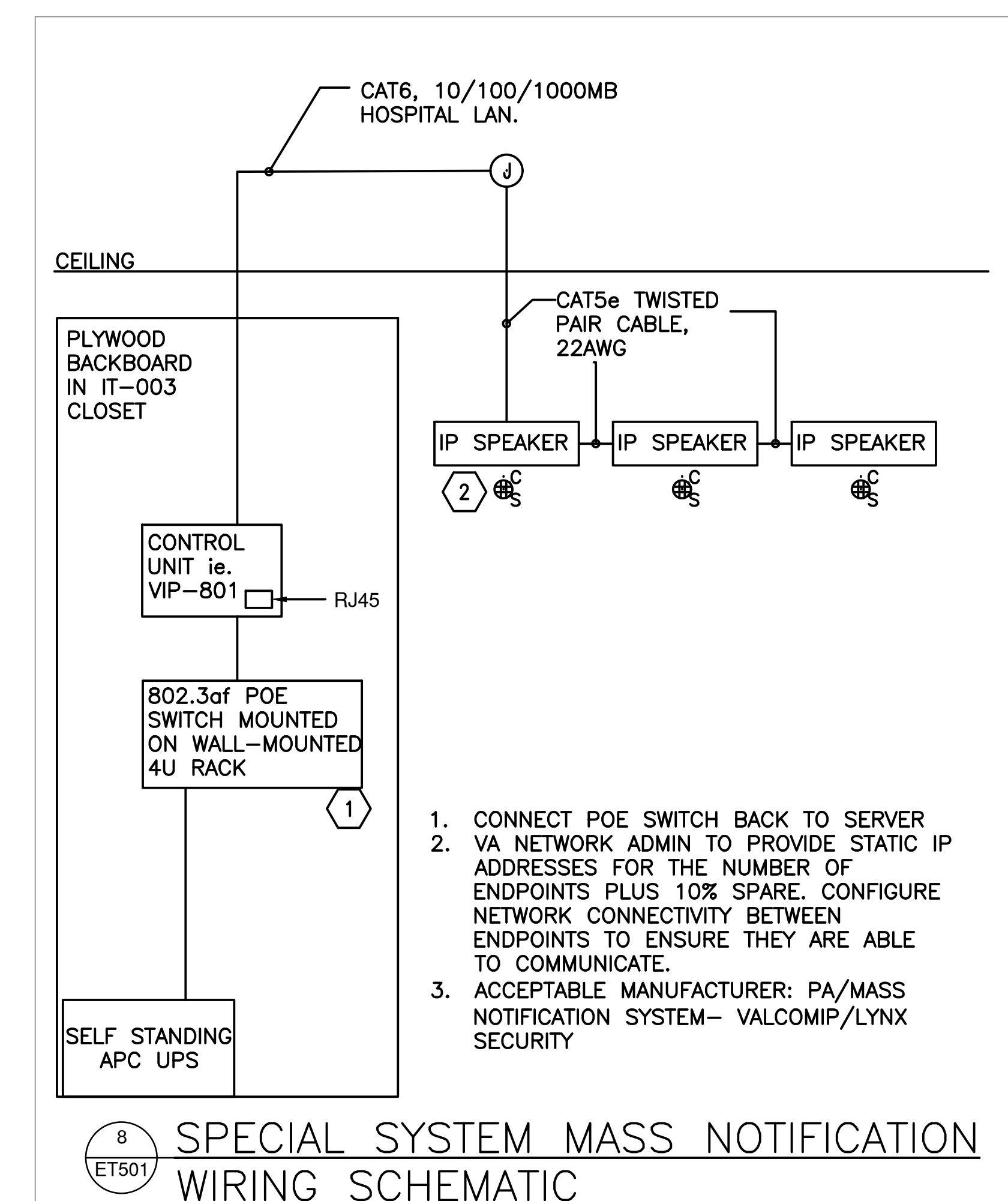
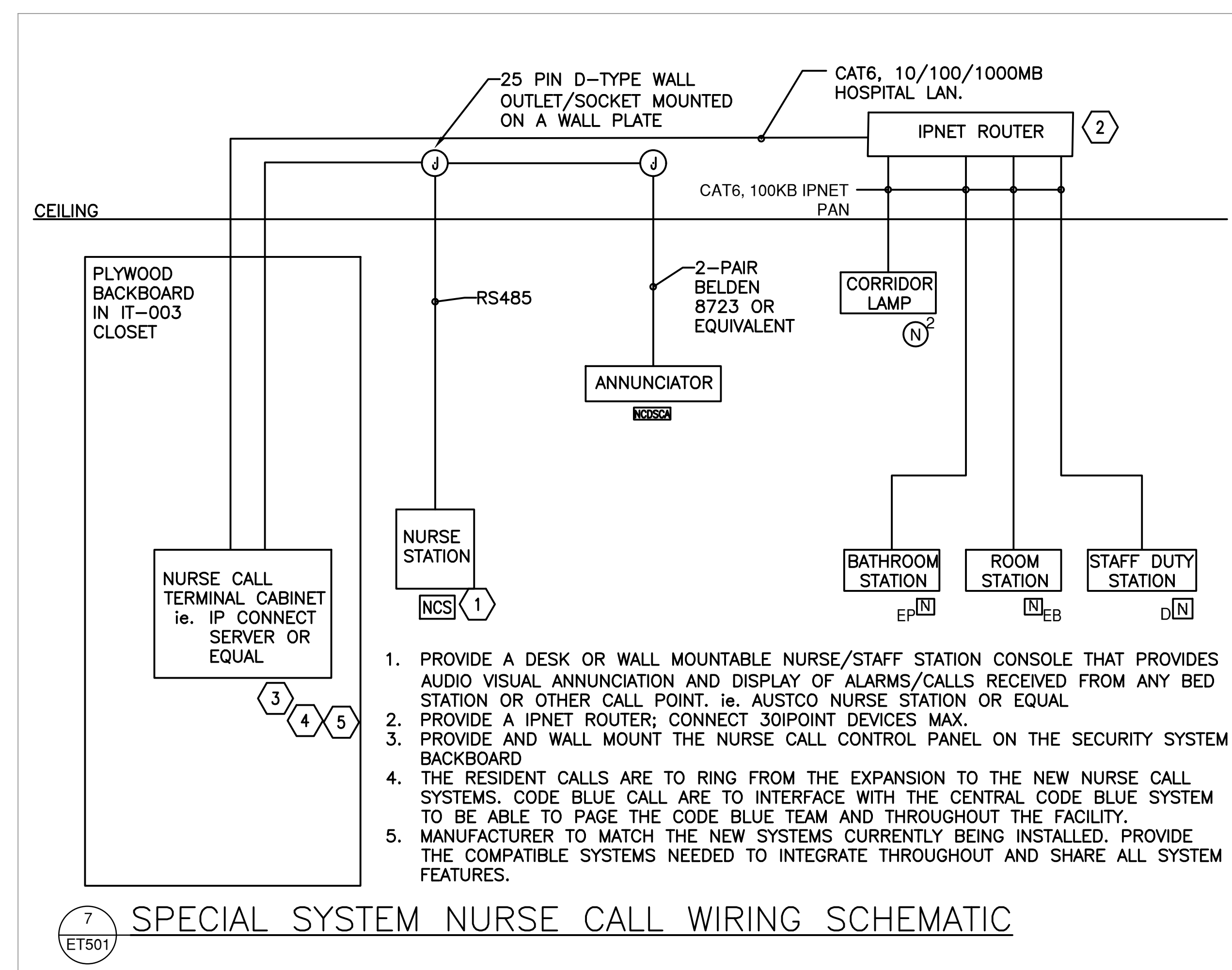
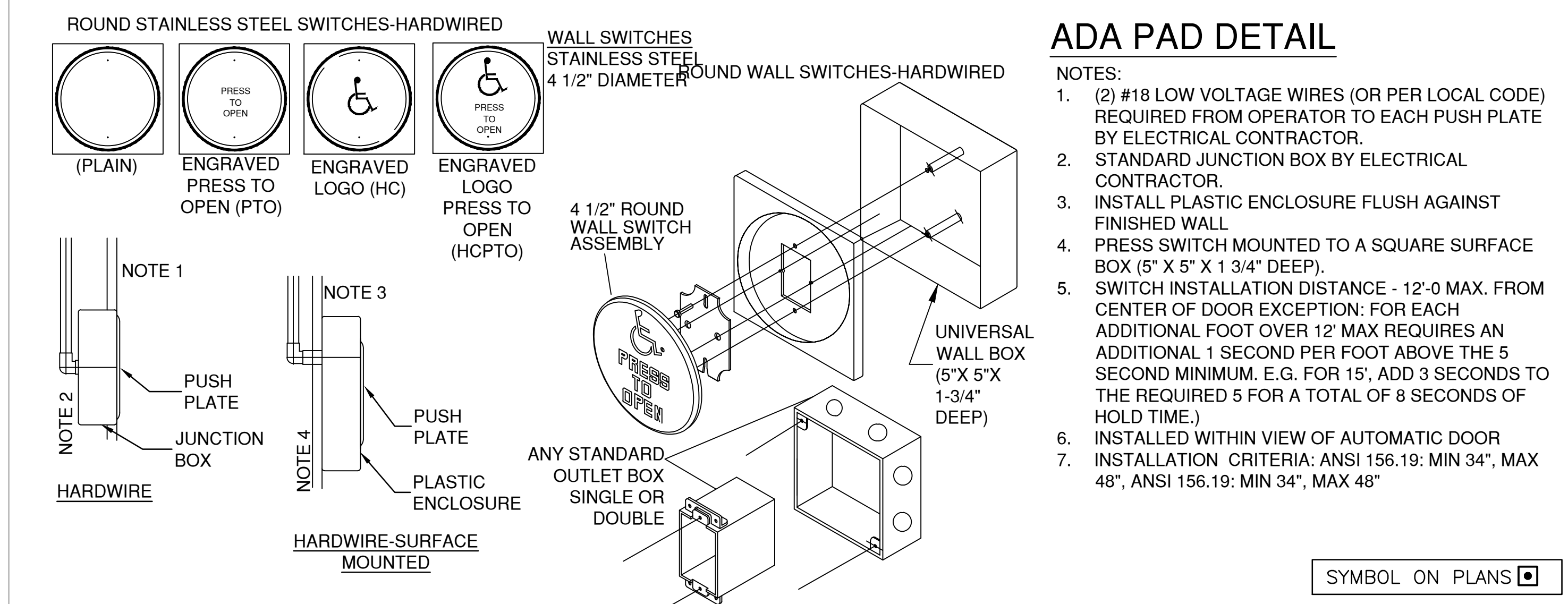
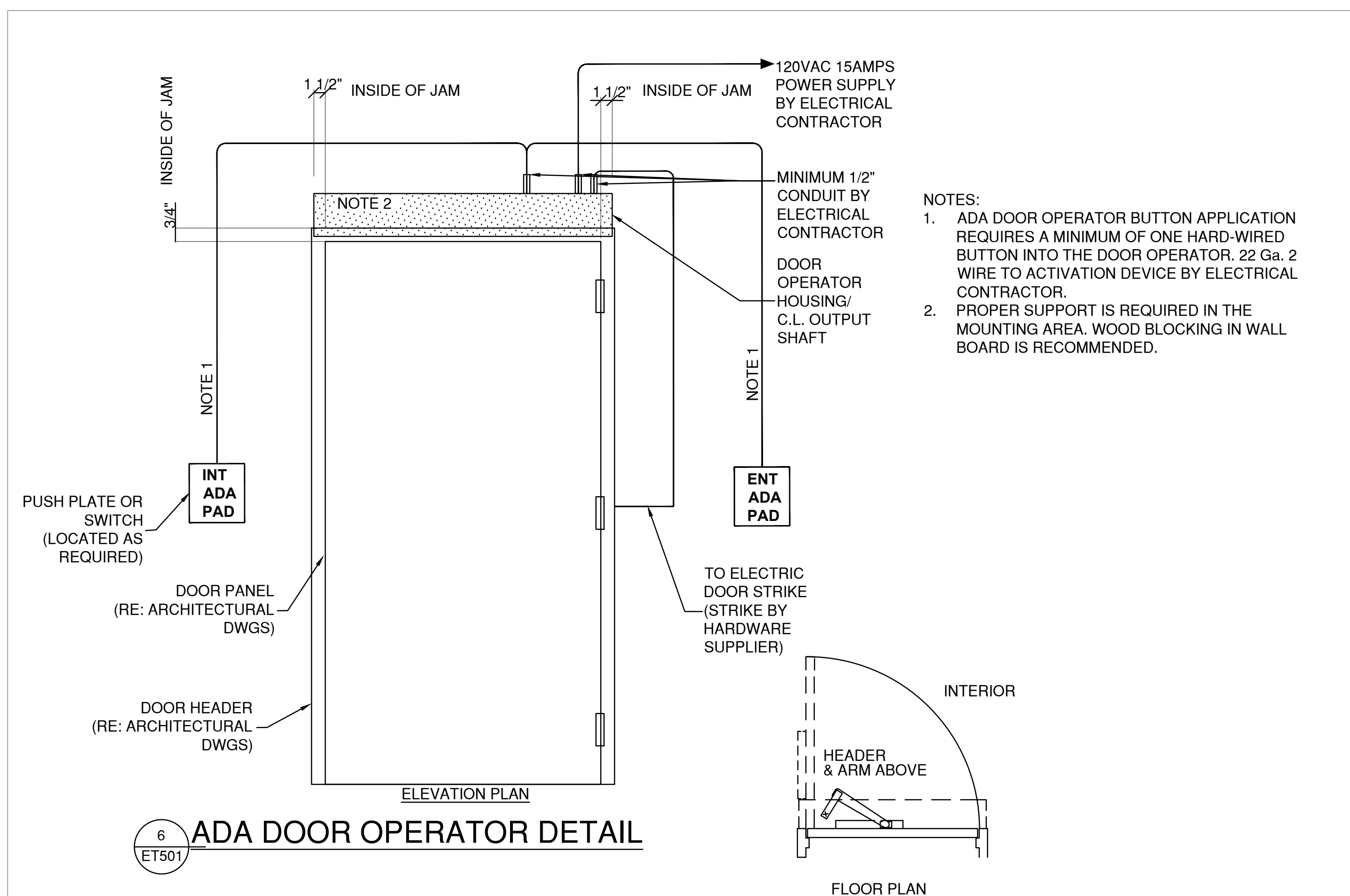
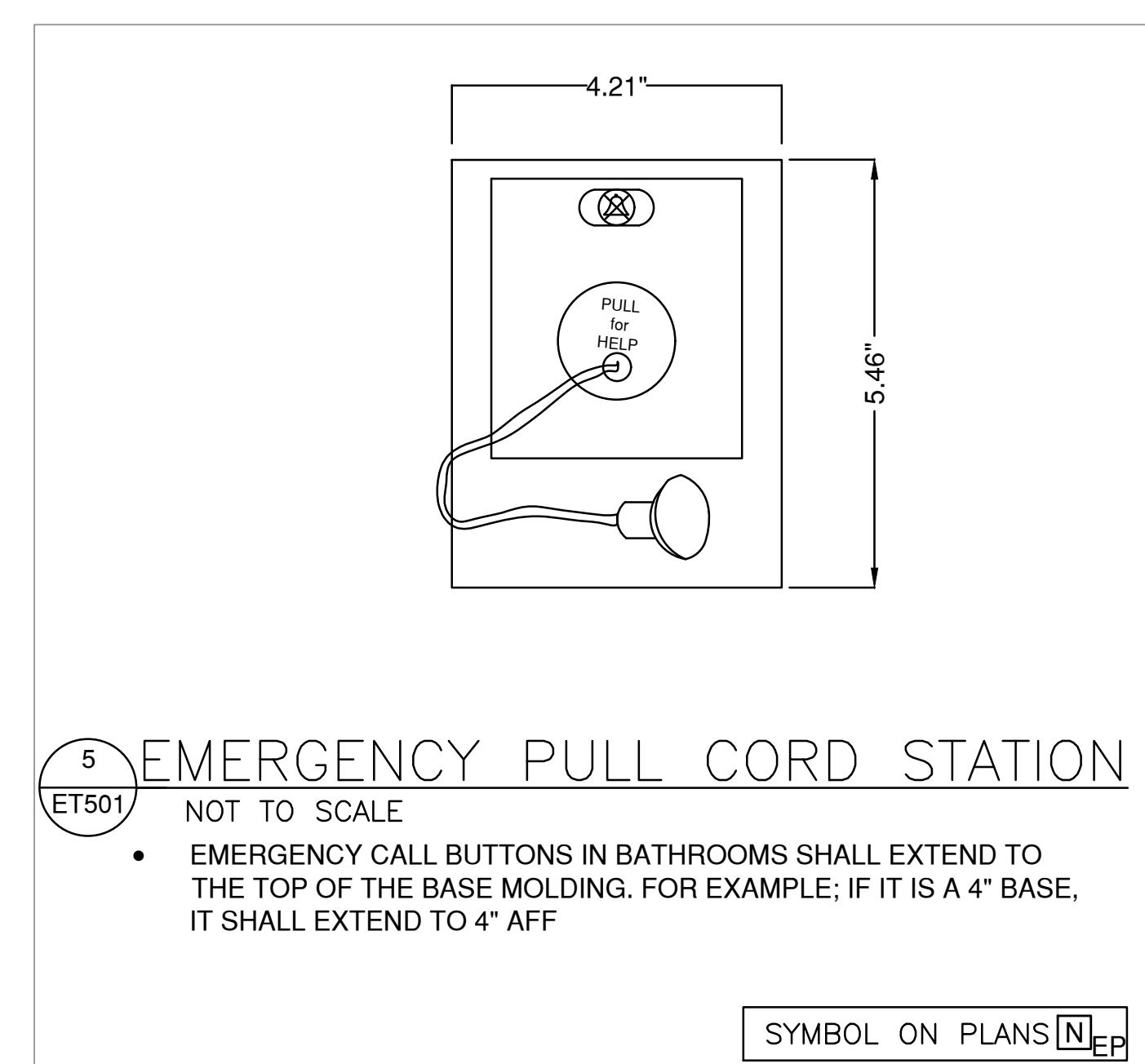
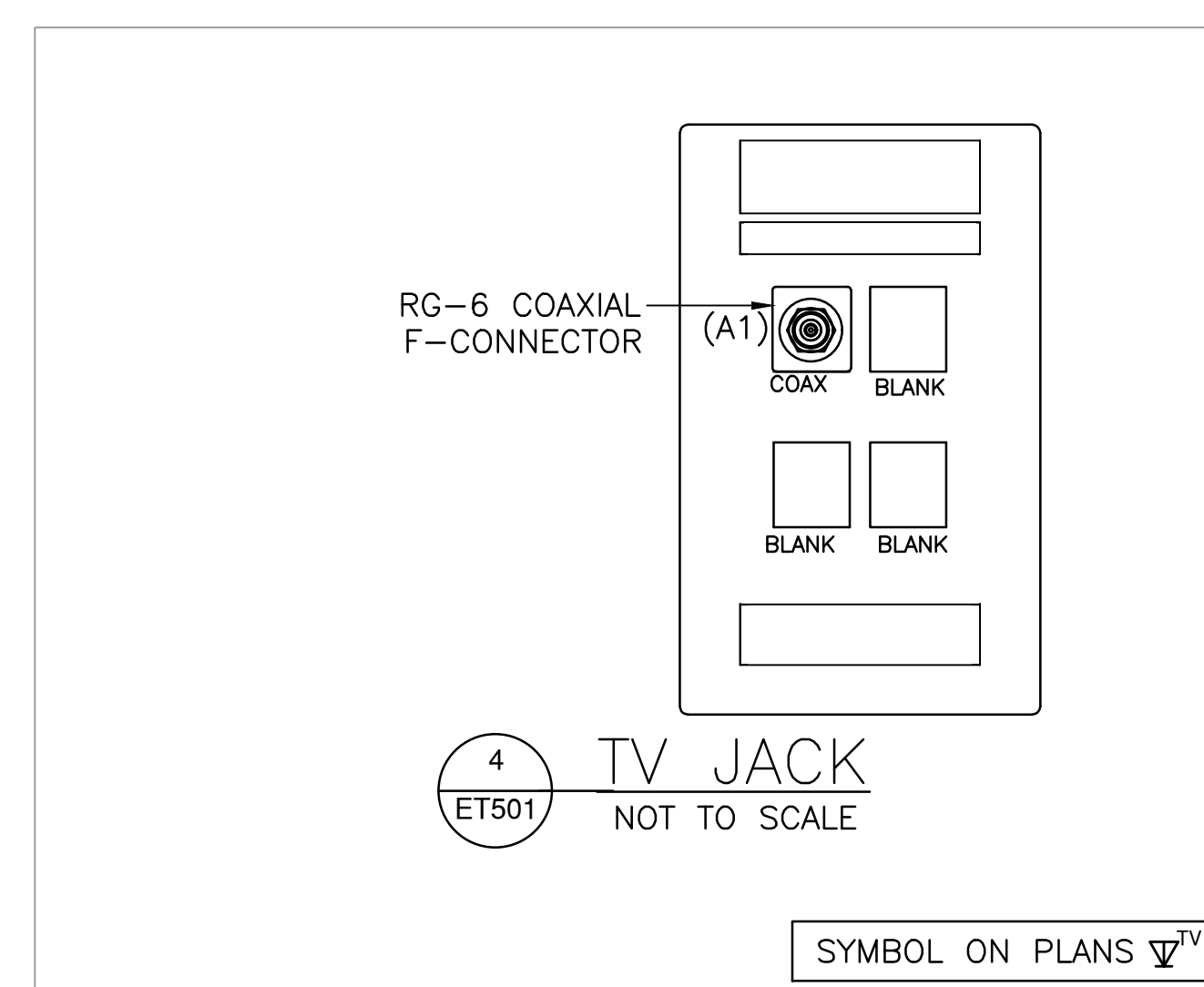
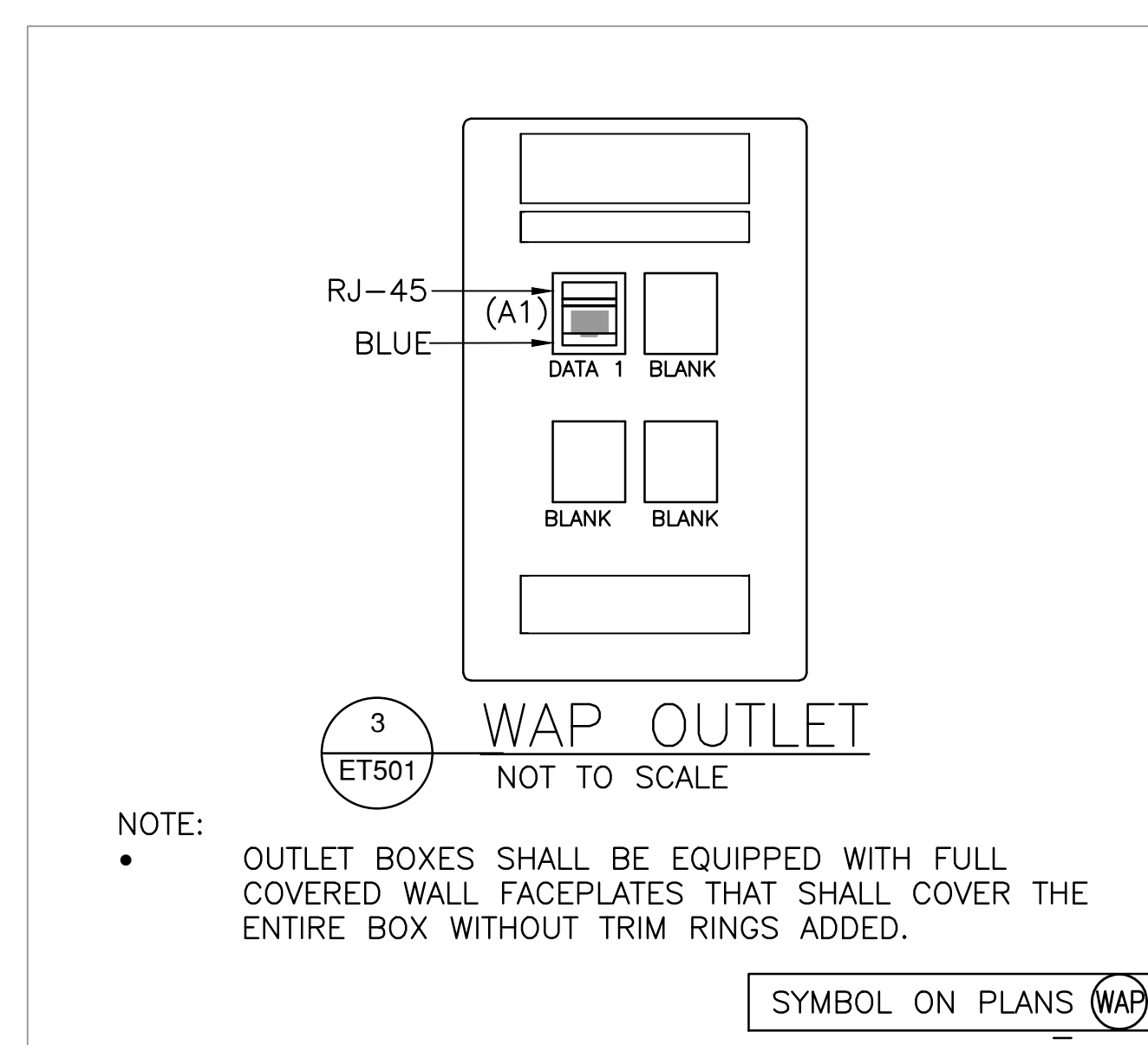
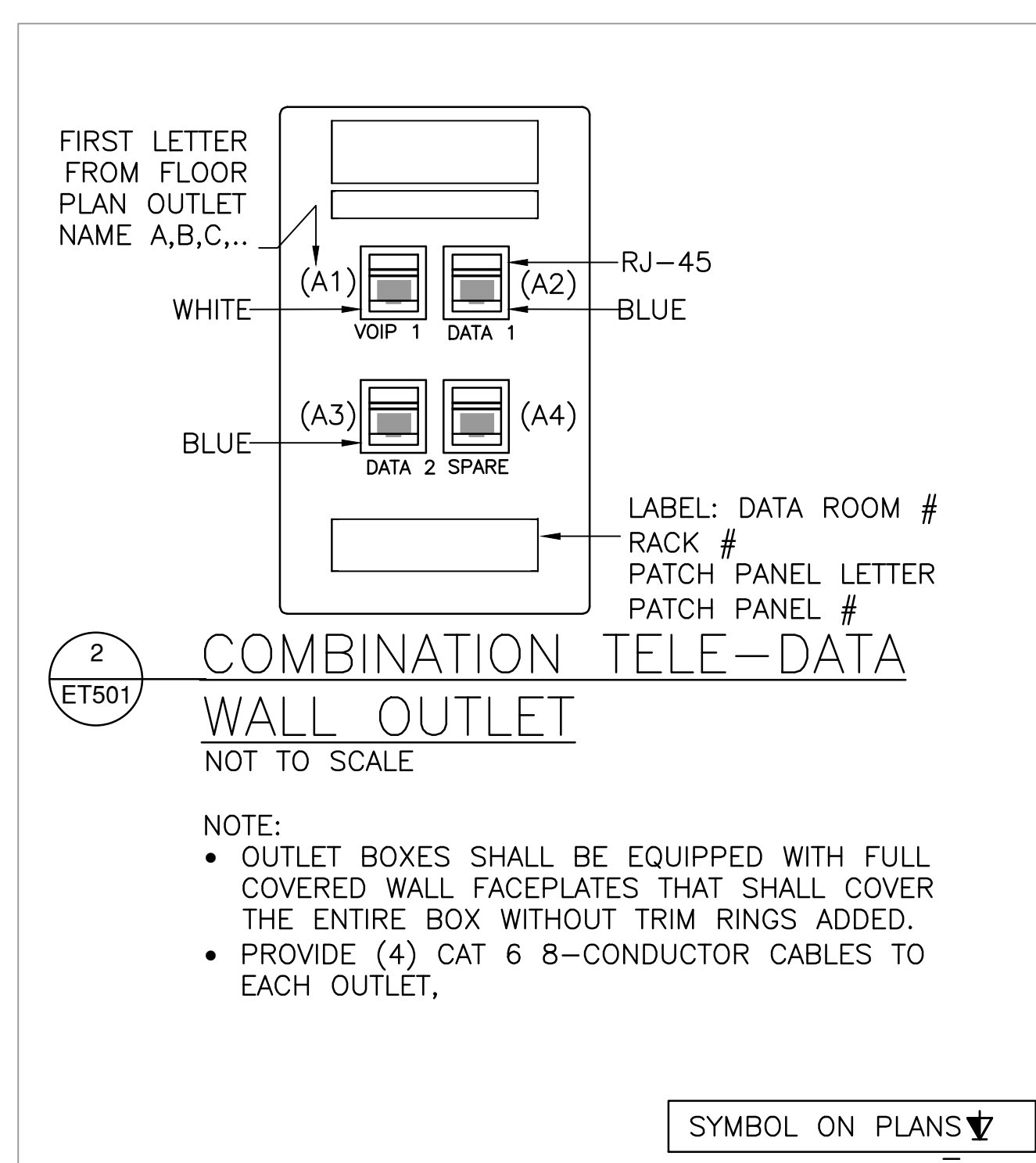
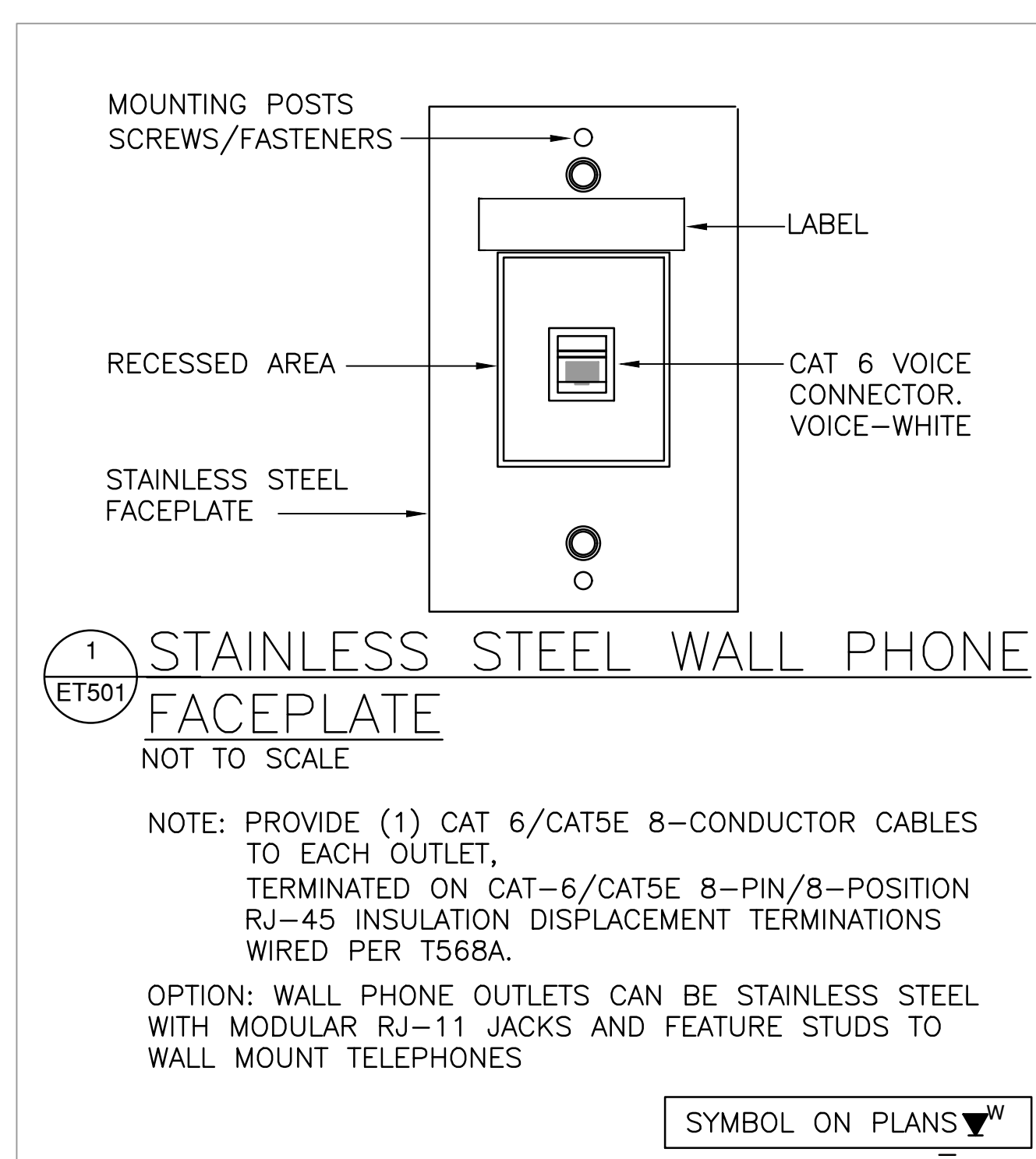
3 EXISTING TELECOMMUNICATIONS PLAN
ET102 SCALE: N.T.S.



CONSTRUCTION DOCUMENTS

		CONSULTANT:		CONSULTANT:		ARCHITECT/ENGINEERS:		Drawing Title ENLARGED SPECIAL SYSTEM ROOM IN BASEMENT PENTHOUSE TELECOMMUNICATION PLAN		Project Title COMMUNITY LIVING CENTER		Project Number 442-12-357		Office of Construction and Facilities Management		
						 11011 SOUTH PINES PEAK DRIVE #202 PARKER, COLORADO 80138 PH: 303.844.3922 WWW.AES-GRP.COM						Building Number COWBOY				
RFI #4		12 APRIL 2017						Approved: Project Director SYLVIE RUPP - CFM DIRECTOR FACILITIES/ENGINEERING PHONE: 307-778-7550x7267 FAX: 307-287-9725		Location CHEYENNE, WYOMING		Drawing Number ET102				
RFI #3		31 MARCH 2017						Date MARCH 2017		Checked RJO		Drawn DKS				
RFI #2		24 MARCH 2017										Dwg. of				
REQUEST FOR INFORMATION #1 (RFI #1)		16 MARCH 2017														
Revisions:		Date														

 Department of Veterans Affairs	
---	--



RFI #4	12 APRIL 2017
RFI #3	31 MARCH 2017
RFI #2	24 MARCH 2017
REQUEST FOR INFORMATION #1 (RFI #1)	16 MARCH 2017
Revisions:	Date

CONSULTANT:

CONSULTANT:

ARCHITECT/ENGINEERS:



Drawing Title	TELECOMMUNICATIONS DETAILS
---------------	-------------------------------

Approved: Project Director
SYLVIE RUPP - CFM DIRECTOR
FACILITIES/ENGINEERING
PHONE: 307-778-7550x7267
FAX: 307-287-9725

Project Title	COMMUNITY LIVING CENTER
---------------	-------------------------

Location	CHEYENNE WYOMING
----------	------------------

Date
MARCH 2017

Project Number	442-12-357
----------------	------------

Building Number
COWBOY

	Drawing Number
--	----------------

ET501
Dwg. 4

Office of
Construction
and Facilities
Management



