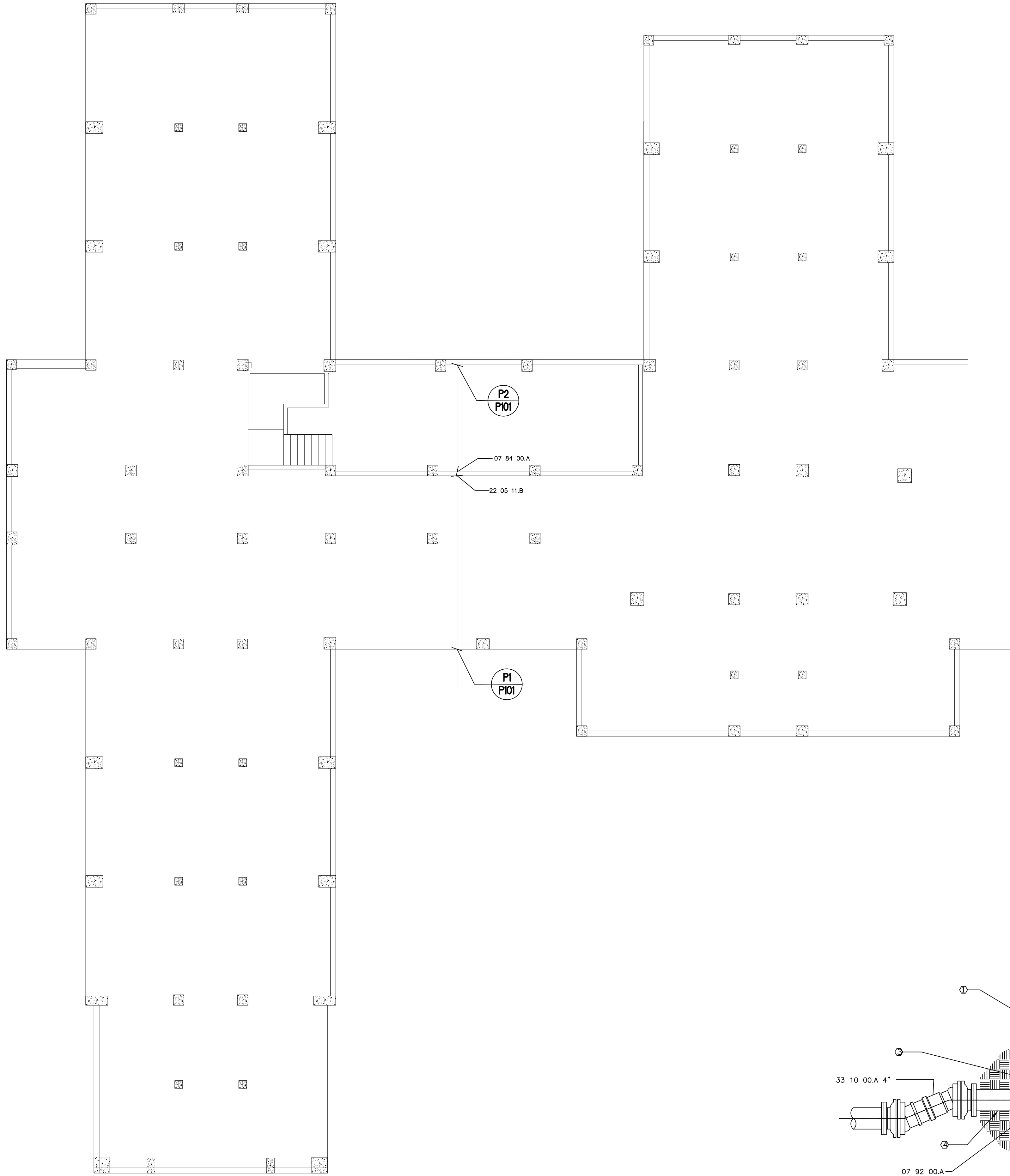
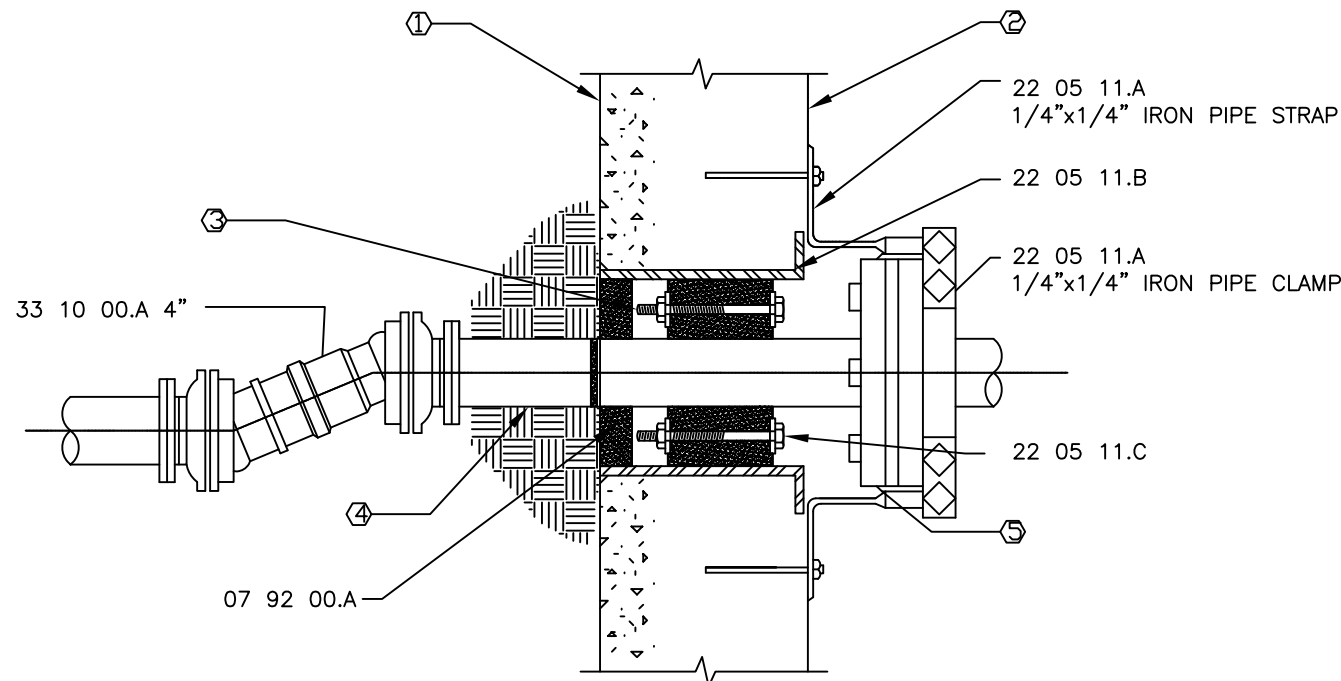


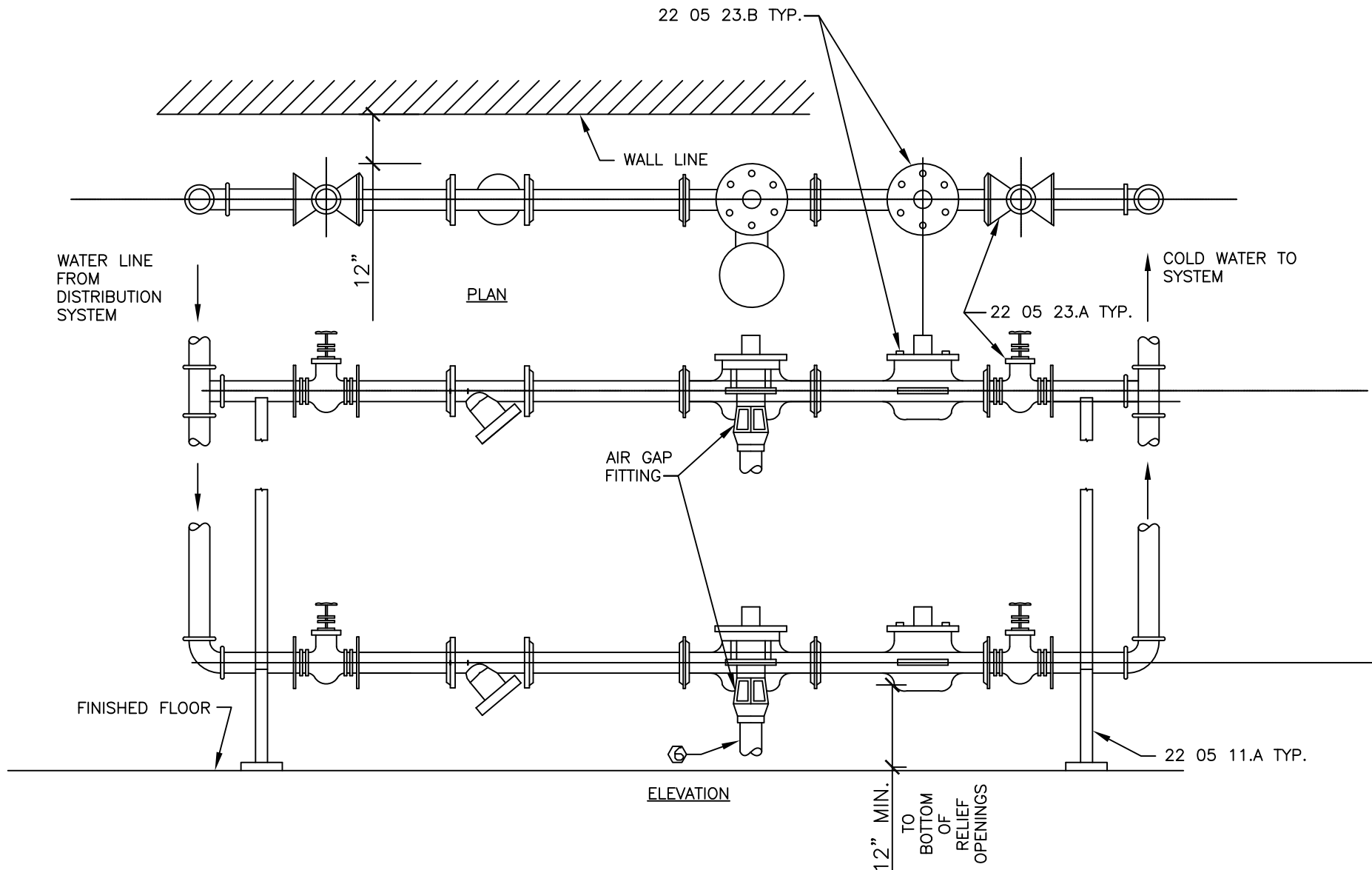
0
three inches = one foot
0
one and one-half inches = one foot
0
2
one inch = one foot
0
three-quarters inch = one foot
0
4
one-half inch = one foot
0
4
three-eighths inch = one foot
0
4
one-quarter inch = one foot
0
16
one-eighth inch = one foot



BUILDING 12 SUB BASEMENT
PLUMBING PARTIAL FLOOR PLAN
NTS



P1
PIPE PENETRATION THROUGH WALLS BELOW GRADE
NTS



P2
BACKFLOW PREVENTER PIPING DETAIL
NTS

GENERAL SHEET NOTES

1. PHASE BACKFLOW PREVENTER INSTALLATION TO MINIMIZE DISRUPTION TO BUILDING WATER SERVICE.
2. PREVENT DAMAGE TO PLASTIC SHEETING IN PIPE CRAWLSPACE. PLASTIC SHEETING IS PRESENT TO ENCAPSULATE RESIDUAL ASBESTOS FIBERS POTENTIALLY PRESENT IN SOIL.

REFERENCE KEYNOTES

- | | |
|------------|--|
| 07 84 00.A | FIRE STOPPING |
| 07 92 00.A | RESILIENT WATERPROOF CAULKING |
| 22 05 11.A | PIPE SUPPORT |
| 22 05 11.B | PIPE SLEEVE |
| 22 05 11.C | MODULAR TYPE WALL PENETRATION SEAL |
| 22 05 23.A | GATE VALVE |
| 22 05 23.B | REDUCED PRESSURE PRINCIPAL BACK FLOW PREVENTER |
| 22 11 00.A | UNDERGROUND PIPE |
| 22 11 00.B | ABOVE GROUND (INTERIOR) PIPE |
| 22 11 00.C | STRAINER, WYE TYPE |
| 22 11 00.D | DIELECTRIC FITTING |
| 33 10 00.A | FLEXIBLE EXPANSION JOINT |

° SHEET KEYNOTES

1. EXTERIOR SIDE OF CONCRETE WALL.
2. INTERIOR SIDE OF CONCRETE WALL.
3. STAINLESS STEEL NUTS, BOLTS, & WASHERS.
4. CENTER PIPE IN SLEEVE.
5. FLANGED PIPE CONNECTION.
6. PIPE TO DRAIN (TYPICAL).

VA MEDICAL CENTER, SALEM, VA.
NO SCALE

Approved: Energy Engineer

Approved: Safety Manager

Approved: Service Chief

Drawing Title
PLUMBING SHEET

Project Title
UPGRADE WATER DISTRIBUTION

Date
04-02-12

Approved: Infection Control Officer

Approved: Chief of Staff

Approved: Chief of Facility Management Svc.

Building Number
NORTH SITE

Checked
EBC

Drawn
WBJ

Project No.
658-12-104

DRAWING NO. P-101

2559

Dwg. 22 of 22

Approved: GEMS Coordinator

Approved: Associate Director

Approved: Medical Center Director

Location
V.A.M.C. SALEM 24153

Revisions
Date

Veterans
Affairs