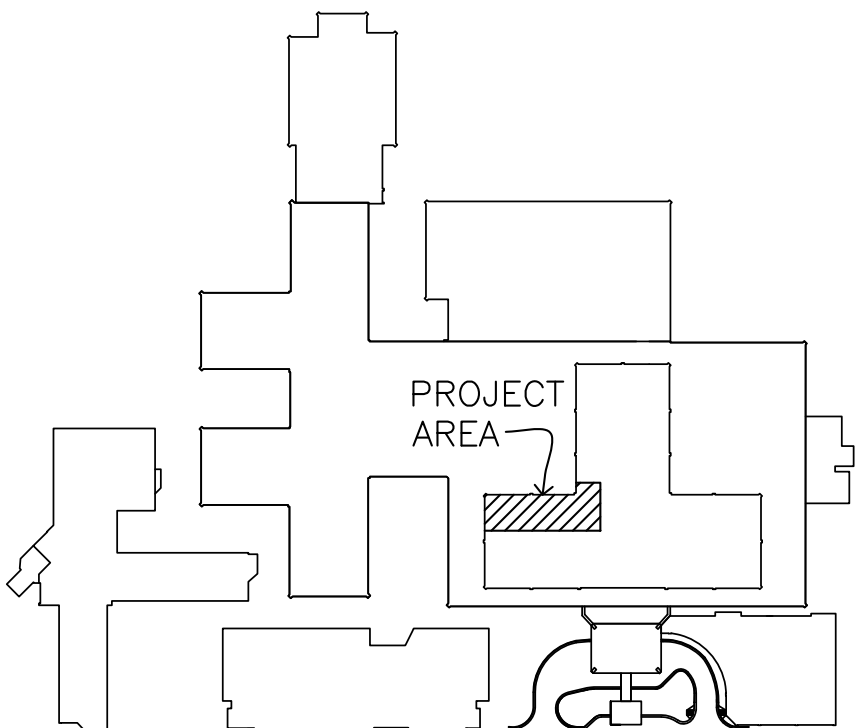
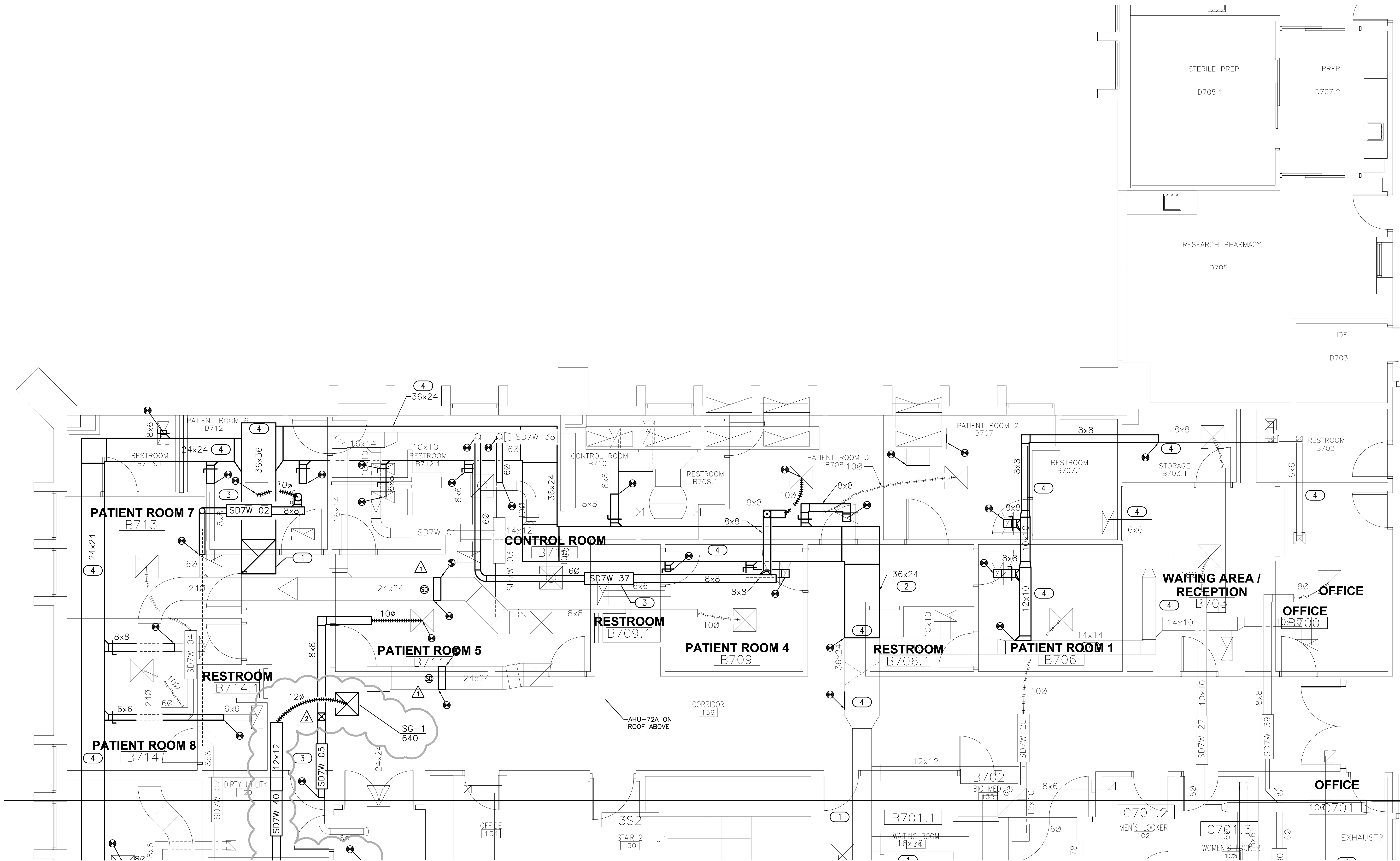


three inches = one foot
one and one half inches = one foot
one inch = one foot
three quarters inch = one foot
one half inch = one foot
three eighths inch = one foot
one quarter inch = one foot
one eighth inch = one foot

- ### GENERAL NOTES
- CUT, PATCH AND REPAIR ALL DUCTWORK AS REQUIRED FOR CONSTRUCTION COMPLETION.
 - COORDINATE NEW DUCTWORK INSTALLATION WITH EXISTING UTILITIES. PROVIDE DUCTWORK OFFSETS AS REQUIRED TO COMPLETE INSTALLATION.
 - PROVIDE TRANSITIONS AND OFFSETS AS REQUIRED FOR CONNECTION TO EXISTING DUCTWORK, GRILLES, REGISTERS AND DIFFUSERS.
 - PROVIDE VOLUME DAMPERS IN EXISTING DUCTWORK AS REQUIRED FOR SYSTEM BALANCING.
 - SEAL COMPLETED AHU-72A DUCTWORK SYSTEM FROM THE INSIDE USING AUTOMATED AEROSOLIZED SEALANT INJECTION. SEE SPECIFICATION 23 33 53 FOR ADDITIONAL INFORMATION.
 - INSTALL ACCESS DOORS AT 20 FOOT INTERVALS AND AT EACH CHANGE IN DIRECTION FOR ALL NEW SUPPLY AND RETURN/EXHAUST DUCTWORK. SEE SPECIFICATION FOR ACCESS DOOR SIZE.

- ### KEYED NOTES
- 36x36 EXHAUST DUCT UP TO AHU-72A PLENUM CURB. ROUTE DUCTWORK BELOW NEW 36X36 EXHAUST RISER. PROVIDE DUCT OFFSETS AND HANGER RELOCATION AS REQUIRED FOR INSTALLATION.
 - NEW 36X24 EXHAUST DUCT. ROUTE NEW 36X24 EXHAUST DUCT THROUGH THE SAME SPACE VACATED BY DEMOLITION EXHAUST DUCT 18X14.
 - RELOCATED VAV. PROVIDE DUCTWORK EXTENSIONS BASED ON NEW VAV LOCATION. COORDINATE VAV LOCATION WITH BOTH EXISTING AND NEW UTILITIES.
 - INSULATE ALL EXISTING AND NEW EXHAUST/RETURN DUCT MAINS AND DUCTWORK RUNOUTS.
 - NEW DUCT SMOKE DETECTOR BY E.C.



KEY PLAN
NOT TO SCALE

1 MECHANICAL - DUCTWORK PLAN 7TH FLOOR WEST SLEEP LAB

1/4" = 1'-0"

Addendum 03	04/12/17
Addendum 02	04/06/17
Revisions	Date

CONSULTANTS:



engineers | consultants | commissioning
2805 Van Buren Street, Suite 200 | Norman, OK 73072
P: 405.364.9028 | F: 405.364.9029
CA# 5121 | Expiration Date: 06.30.2017
MEP PROJECT NO.: P14.15.01



ARCHITECT/ENGINEERS:



1144 AIRPORT BLVD.
SUITE 260
AUSTIN, TX 78702
(866) 226-8071 TELE.
(866) 226-9969 FAX

WWW.PRIME-ARCH.COM

Drawing Title
MECHANICAL - DUCTWORK PLAN 7TH
FLOOR WEST SLEEP LAB

Approved Project Director

Project Title
REFURBISH BONE MARROW TRANSPLANT
UNIT

Location
VAMC SAN ANTONIO

TX

Date
NOVEMBER 12, 2015

Checked
JAU

Drawn
JRM

Project Number
671-15-100

Building Number
1

Drawing Number

MH-104

Dwg. 31 of 45

Office of
Construction
and Facilities
Management

