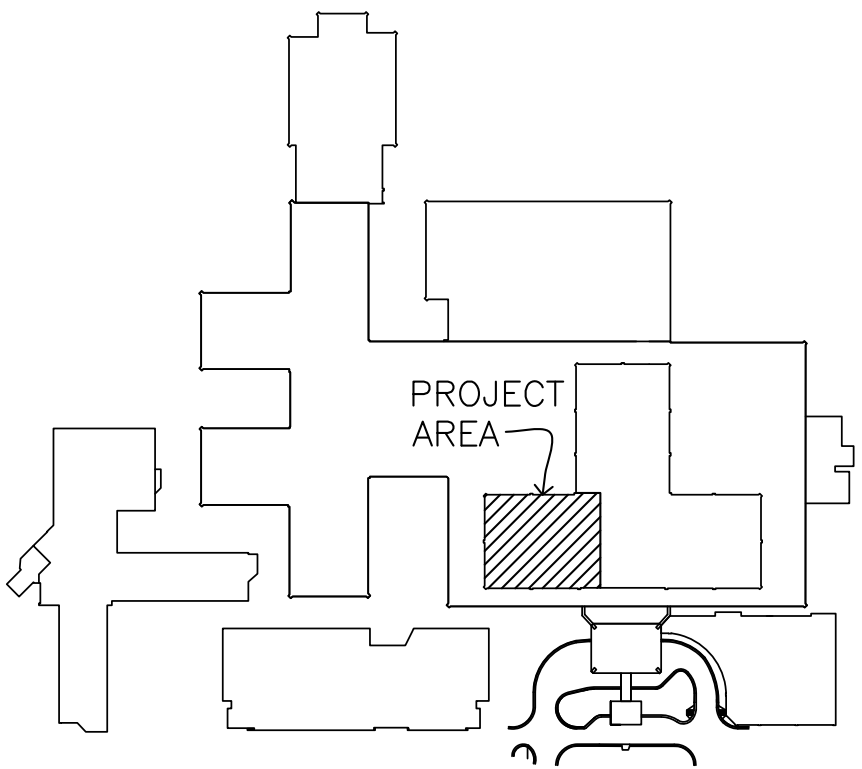
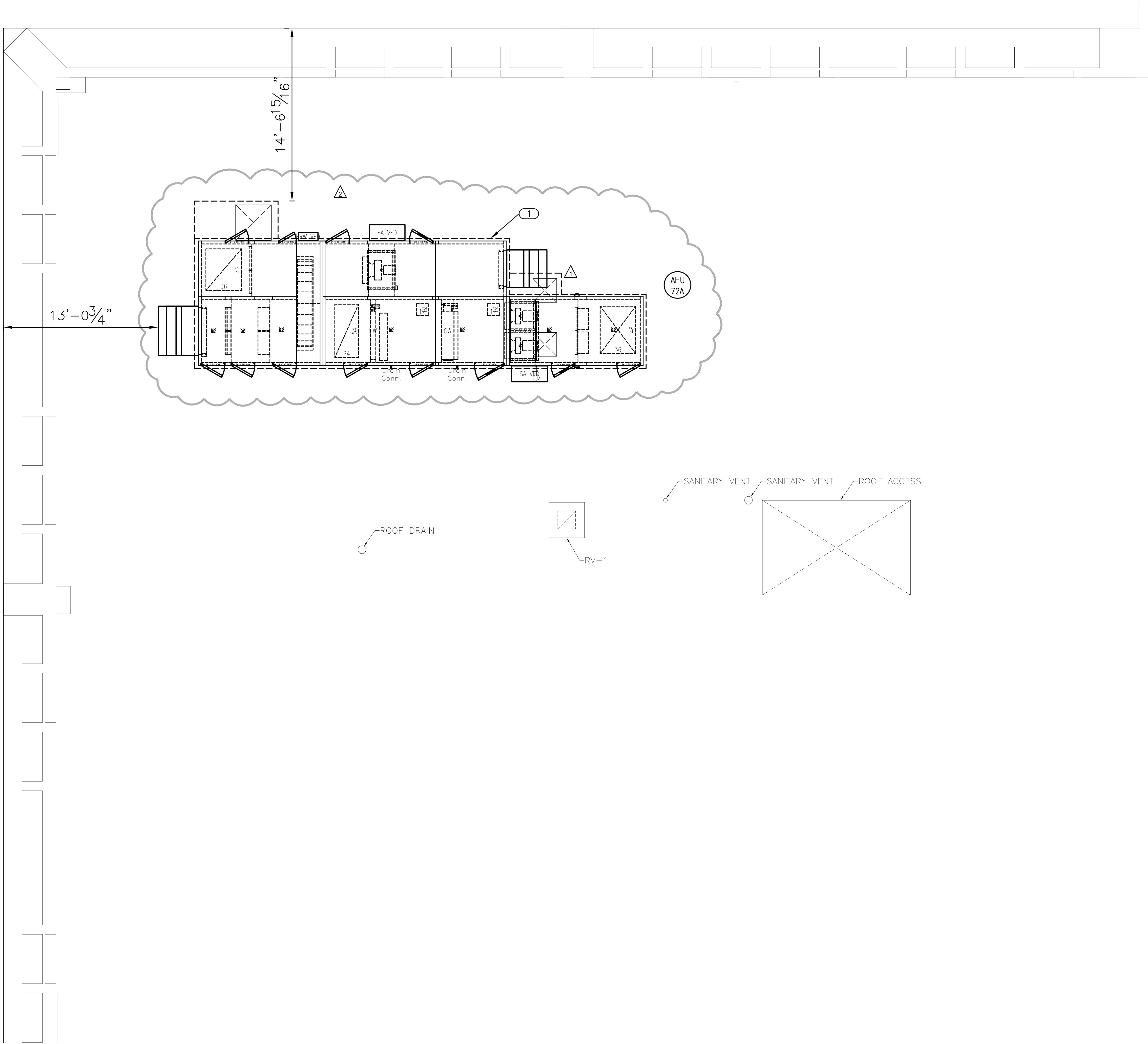


three inches = one foot  
one and one half inches = one foot  
one inch = one foot  
three quarters inch = one foot  
one half inch = one foot  
three eighths inch = one foot  
one quarter inch = one foot  
one eighth inch = one foot


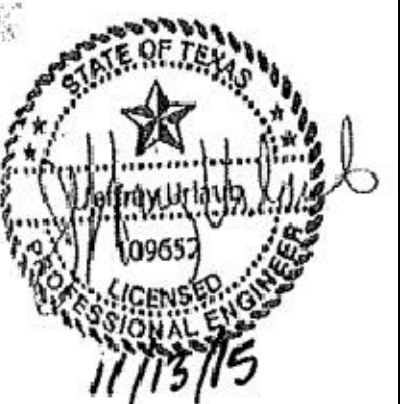


- GENERAL NOTES**
1. FIELD VERIFY EXACT LOCATION OF THE EXISTING ROOF OPENINGS, NEW ROOF OPENING AND PIPE PENETRATIONS PRIOR TO FINAL INSTALLATION. COORDINATE AHU PLENUM SIZE BASED ON ROOF PENETRATION COVERAGE.
  2. INSTALL NEW AHU-72A A MINIMUM OF 10'-0" FROM ROOF EDGE.
  3. FIELD VERIFY ALL EXHAUST AND RELIEF AIR OPENINGS ON THE ROOF IN RELATION TO AHU-72A OUTSIDE AIR (O.A.) INTAKE. MAINTAIN A MINIMUM OF 20'-0" FROM O.A. OPENING TO EXHAUST/RELIEF AIR OPENING.

- KEYED NOTES**
- 1 NEW AHU-72A INSTALLED WITH PLENUM CURB FOR SUPPLY AND RETURN DUCT OFFSETS. THE CURB WILL ALSO CONTAIN THE HWS/R, CHWS/R AND STEAM PIPING PENETRATIONS THROUGH THE ROOF. SEE DETAIL 5/M.503 FOR ADDITIONAL PLENUM INFORMATION.



**KEY PLAN**  
NOT TO SCALE

**1 MECHANICAL - ROOF PLAN**  
1/4" = 1'-0"

		<b>CONSULTANTS:</b>		 engineers   consultants   commissioning 2805 Van Buren Street, Suite 2004   Houston, TX 77022 P: 409.364.2028   F: 409.364.2029 CA# 5121   Expiration Date: 06/30/2017 MEP PROJECT NO.: P14.15.01		 11/13/15		<b>ARCHITECT/ENGINEERS:</b>		 1144 AIRPORT BLVD. SUITE 260 AUSTIN, TX. 78702 (866) 226-8071 TELE. (866) 226-9969 FAX WWW.PRIME-ARCH.COM		<b>Drawing Title</b> MECHANICAL - ROOF PLAN		<b>Project Title</b> REFURBISH BONE MARROW TRANSPLANT UNIT		<b>Project Number</b> 671-15-100		<b>Office of Construction and Facilities Management</b> 			
										<b>Approved Project Director</b>		<b>Location</b> VAMC SAN ANTONIO TX		<b>Building Number</b> 1							
												<b>Date</b> NOVEMBER 12, 2015		<b>Checked</b> JAU		<b>Drawn</b> JRM					
																		<b>Drawing Number</b> MH-107 Dwg. 34 of 45			