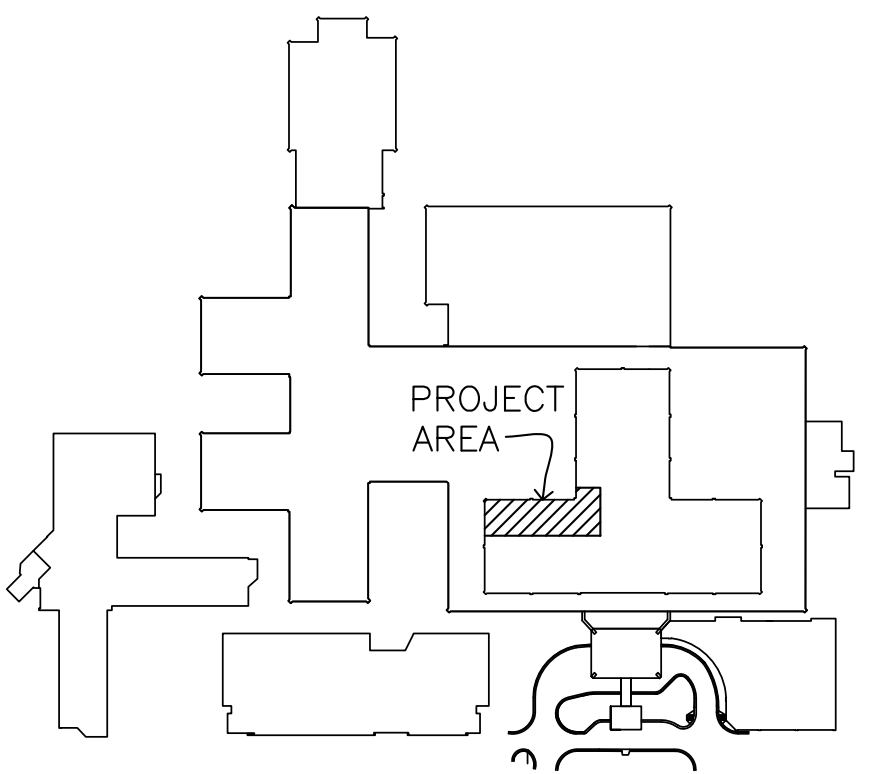
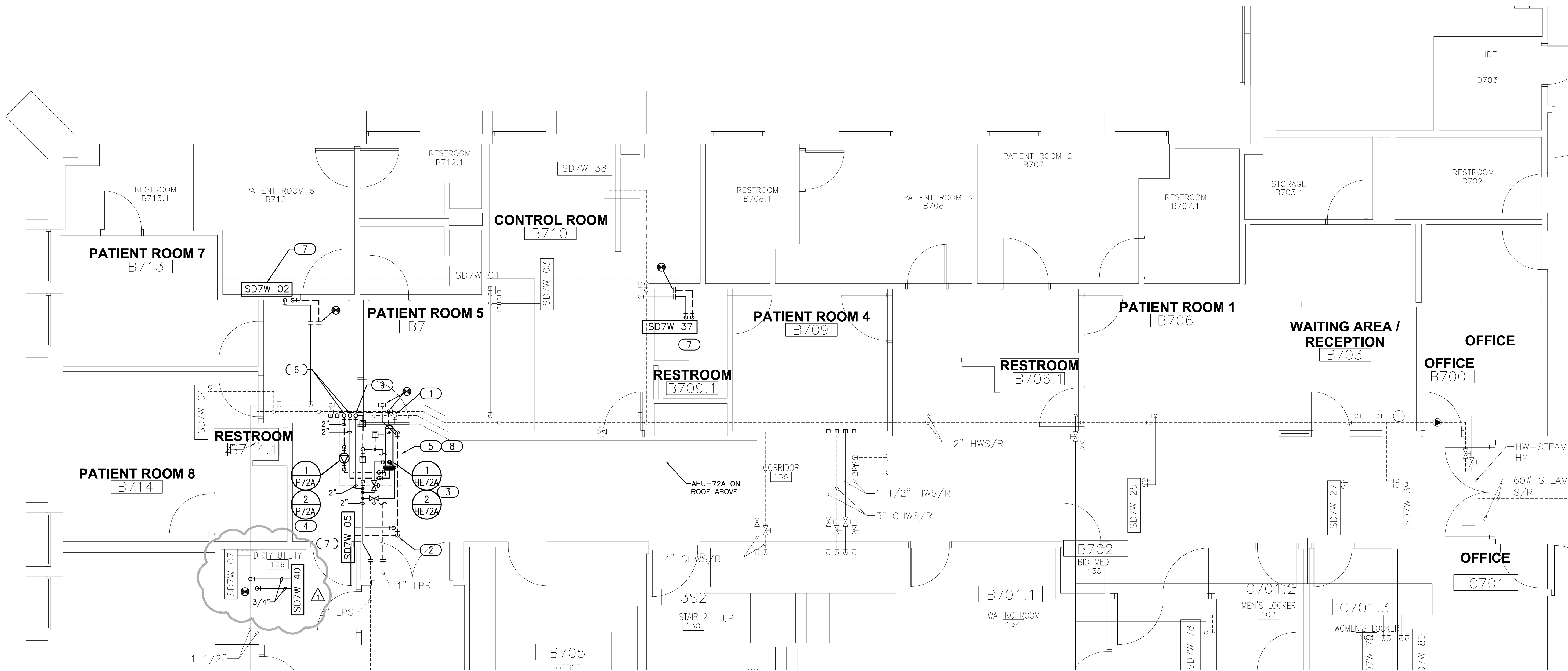


three inches = one foot
one and one half inches = one foot
one inch = one foot
three quarters inch = one foot
one half inch = one foot
three eighths inch = one foot
one quarter inch = one foot
one eighth inch = one foot

- ### GENERAL NOTES
1. INSTALL ALL EQUIPMENT AND PIPING COMPONENTS PER MANUFACTURERS RECOMMENDATIONS.
 2. LOCATE EQUIPMENT AND PIPING COMPONENTS IN ACCESSIBLE LOCATIONS FOR MAINTENANCE. PROVIDE CLEARANCE REQUIREMENTS PER MANUFACTURER.
 3. INTEGRATE ALL NEW STEAM TRAPS INTO EXISTING STEAM TRAP MONITORING SYSTEM. PROVIDE ALL REQUIRED WIRING AND COMPONENTS. COORDINATE WITH BUILDING MAINTENANCE.

- ### KEYED NOTES
- 1 EXISTING 4" CHILLED WATER SUPPLY AND RETURN LINES UP THROUGH ROOF TO AHU-72A CONNECTION.
 - 2 3/4" HWS/R PIPING TO VAV-SD7W-05. STACK PIPING AND INSTALL AS CLOSE TO EXISTING 24x24 SUPPLY DUCT AS POSSIBLE.
 - 3 HEAT EXCHANGER HE72A-1 & 2 STACKED IN INTERSTITIAL SPACE. PROVIDE SUPPORT LEGS WITH HANGER RODS FOR INSTALLATION.
 - 4 PUMPS P72A-1 & 2 STACKED IN INTERSTITIAL SPACE. PROVIDE PUMP SUPPORTS PER INSTALLATION.
 - 5 INSTALL PERMANENT GRATED PLATFORM PROVIDING MAINTENANCE ACCESSIBILITY TO EQUIPMENT AND PIPING COMPONENTS. MATCH EXISTING GRATED PLATFORM IN INTERSTITIAL SPACE. COORDINATE WITH OWNER.
 - 6 NEW 2" HOT WATER SUPPLY AND RETURN PIPING FROM HE72A-1 & 2 UP TO AHU-72A CONNECTION. ROUTE PIPING IN AHU CURB. COORDINATE PIPE PENETRATIONS AND CONNECTIONS WITH AHU AND CURB MANUFACTURER.
 - 7 RELOCATED VAV. PROVIDE PIPING OFFSET AND EXTENSION BASED ON NEW VAV LOCATION. COORDINATE VAV LOCATION WITH BOTH EXISTING AND NEW UTILITIES.
 - 8 INSTALL 3" WELDED STAINLESS STEEL DRAIN PAN BELOW METAL GRATED ACCESS PLATFORM. DRAIN PAN SHALL BE SLOPED TOWARD DRAIN. COORDINATE INSTALLATION OF DRAIN PAN AND OPEN SITE LOCATION WITH PLUMBING CONTRACTOR.
 - 9 NEW 2" LOW PRESSURE STEAM PIPING FROM MAIN UP TO 1-H72A HUMIDIFIER SERVING AHU-72A. ROUTE STEAM PIPE IN AHU CURB. COORDINATE PIPE PENETRATIONS AND CONNECTIONS WITH AHU AND CURB MANUFACTURER.




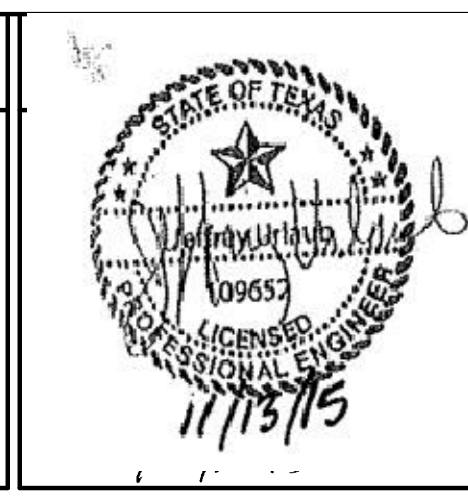
KEY PLAN
NOT TO SCALE

1 MECHANICAL - PIPING PLAN 7TH FLOOR WEST SLEEP LAB

1/4" = 1'-0"

Addendum 03	04/12/17
Revisions	Date

CONSULTANTS:

engineers consultants commissioning 2005 Van Buren Street, Suite 2004 Houston, TX 77002 P: 281.364.2020 F: 281.364.2021 CA#: 5121 Expiration Date: 06.30.2017 MEP PROJECT NO.: P14.15.01



ARCHITECT/ENGINEERS:
1144 AIRPORT BLVD. SUITE 260 AUSTIN, TX. 78702 (866) 226-8071 TELE. (866) 226-9969 FAX WWW.PRIME-ARCH.COM

Drawing Title MECHANICAL - PIPING PLAN 7TH FLOOR WEST SLEEP LAB
Approved Project Director

Project Title REFURBISH BONE MARROW TRANSPLANT UNIT
Location VAMC SAN ANTONIO TX
Date NOVEMBER 12, 2015
Checked JAU
Drawn JRM

Project Number 671-15-100
Building Number 1
Drawing Number MP-101 Dwg. 35 of 45

Office of Construction and Facilities Management
Department of Veterans Affairs