

- A. CONTRACTOR RESPONSIBLE FOR VERIFYING ALL DIMENSIONS. DIMENSIONS INDICATED ARE FROM FINISH SURFACES.
- B. PATCH ALL FLOOR OPENINGS WHERE EXISTING WALL, CONDUIT AND PIPING ARE REMOVED. INSTALL AT ALL REMOVED OUTLET BOXES, DUCTS, PIPING, ETC.
- C. NEW WORK SHALL ALIGN WITH AND MATCH ADJACENT EXISTING WORK EXCEPT WHERE OTHERWISE DIMENSIONED OR DETAILLED.
- D. GENERAL CONTRACTOR IS RESPONSIBLE FOR ALL SIGNAGE INSTALLATION.
- E. BOTH SIDES.
- F. CONTRACTOR TO PATCH AND PREPARE ALL EXISTING SURFACES FOR NEW FINISHES AS SPECIFIED.
- G. CONTRACTOR TO PERFORM DAILY INSPECTIONS OF EGRESS ROUTES IN CONSTRUCTION AREAS.
- H. NEGATIVE PRESSURE MACHINES TO BE USED WITH HEPA FILTRATION FOR DURATION OF CONSTRUCTION DUE TO INFECTION/DUST CONTROL.
- I. NOT USED.
- J. CONTRACTOR SHALL SUBMIT AN UPDATED BAR GRAPH SCHEDULE AT INTERVALS OF THIRTY CALENDAR DAYS.
- K. CONTRACTOR SHALL PREPARE AN ACCESS PLAN PRIOR TO THE PRECONSTRUCTION MEETING.
- L. PATCH EXISTING PARTITIONS AT LOCATIONS OF REMOVED PARTITIONS.
- M. PARTITION TYPE TO BE DETAILED UNLESS NOTED OTHERWISE.
- N. CONTRACTOR TO REMOVE AND REINSTALL EXISTING AIRWORK.

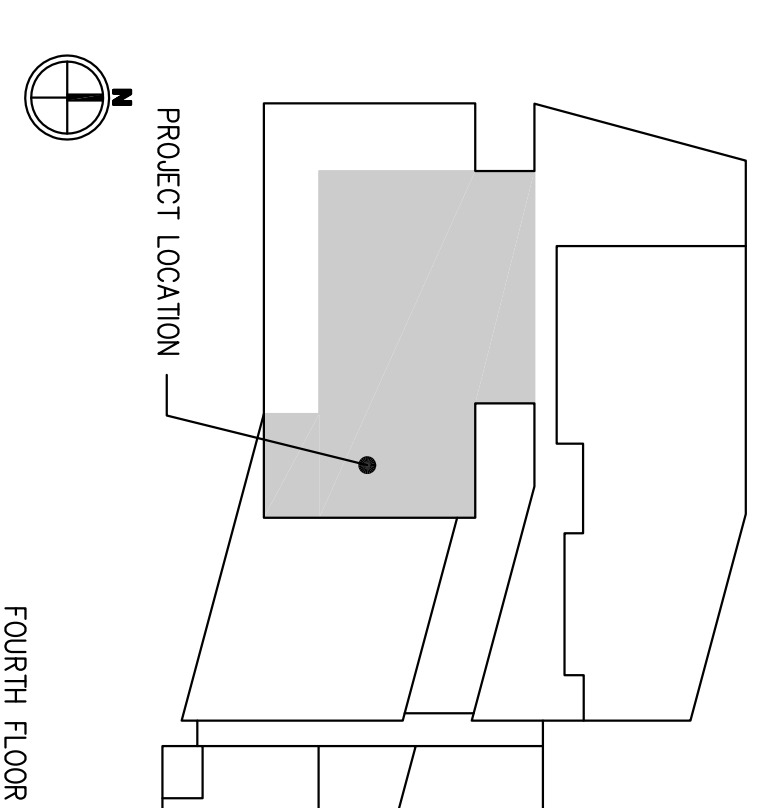
GENERAL NOTES

1. EXISTING WINDOW SHADDES TO REMAIN. PROTECT DURING CONSTRUCTION.
2. NEW DOUBLE LAYER WINDOW SHADDES WITH BLACK-OUT SHADE.
3. 6'-0" HIGH PARTITION.
4. RELOCATED DRINKING FOUNTAINS.
5. NEW FOLDING PARTITION.
6. INFILL WITH NEW HANDRAIL - TIE INTO EXISTING HANDRAIL AT SEAMS.
7. INSTALL NEW HANDRAIL. SEE DETAIL 7/A4.3.1.
8. EXISTING PARTITION TO STRUCTURE ABOVE AND MEET CHARACTERISTICS OF TYPE 04AB.
9. ALIGN EDGE OF PARTITION WITH EDGE OF WINDOW OPENING.
10. ALIGN EDGE OF NEW PARTITION WITH EXISTING PARTITION.
11. LOCATION OF IN-WALL PLUMBING FOR POTENTIAL FUTURE SINKS. SEE MEP DRAWINGS.
12. SEE 6/A4.4.1 FOR TYPICAL EXAM ROOM LAYOUT.
13. PROVIDE STRAP BRACING ON ENTIRE WALL FOR POTENTIAL FUTURE HANDRAILS. SEE DETAIL A9.2.1, CENTER AT 7'-6" A.F.F.
14. INSTALL WP-1 TO 36" A.F.F. ON ALL WALLS IN THIS HALL. SEE FINISH SCHEDULE.
15. SEMI-RECESSED FIRE EXTINGUISHER CABINET. RELOCATE EXISTING AS POSSIBLE.
16. TELEVISION. PROVIDE BLOCKING IN WALL.
17. RELOCATE EXISTING SPACE MOUNTED BAY CHANGING STATIONS. PROVIDE BLOCKING IN WALL. FIELD VERIFY SIZE.
18. EXISTING PARTITION BUILD IN WALLBOARD ON THIS SIDE. ONCE WORK INSIDE THE WALL HAS BEEN COMPLETED, INSTALL WALLBOARD ON THIS SIDE.

KEY NOTES

- EXISTING PARTITION TO REMAIN
- NEW PARTITION. SEE PARTITION TYPES.
- EXISTING DOOR & FRAME TO REMAIN.
- NEW OR REUSED DOOR & FRAME.
- CUSTOMWORK
- EQUIPMENT, N.I.C.
- 05 - CORNER GLASS.
- GENERAL LIMITS OF ARCHITECTURAL WORK. SEE MECHANICAL AND ELECTRICAL DRAWINGS FOR CONSTRUCTION BARRIER REQUIREMENTS FOR SPECIFIC LOCATIONS FOR ALL WORK.

LEGEND



FOURTH FLOOR KEY PLAN

Project Title	Project Number
INCREASE CLINICAL SPACE, 4TH FLOOR	757-12-201
Location	Drawing Number
COLUMBUS, OHIO	A2.2.3
Date	
02-23-2012	



PARTIAL FOURTH FLOOR PLAN

CONSULTANTS:

Issued for bid	2012/01/23
Reissued for bid	2012/02/23
At - Addendum No. 1 - sheet reissued	2012/05/17
Revisions	Date

**KORDA**  
KORDA/NEWEETH ENGINEERING  
1650 Walmark Drive, Suite 200 - Columbus, Ohio 43215-7010  
614-487-1650 - FAX 614-487-8881 - WEB www.korda.com

ARCHITECT:

**CHAMPLIN**  
ARCHITECTS  
thinkchamplin.com  
424 East Fourth Street  
T 614.241.4494 F 614.241.0081  
THINK CREATE REALIZE

ENLARGED 4TH FLOOR PLAN - AREA '3'

Approved Project Director