

NOTES

ALL PIPES SHALL BE 3/4" UNLESS NOTED OTHERWISE

ALL CORRIDOR SLOT DIFFUSERS THIS DRAWING SHALL BE 2" PLENUM WITH 4" CEILING SLOT.

NOTES ELSEWHERE

1 8" x 8" CD-4 120/SA	24 12" x 10" RA DUCT UP 640 CFM	48 16" x 18" EA DUCT UP 2100 CFM	72 10" x 10" LV SA DUCT FR ABV
2 6" x 8" CD-2 70/SA	25 8" x 8" HV SA DUCT FR ABV 670 CFM	49 16" x 10" CD-3 230/SA	73 10" x 6" LV SA DUCT FR ABV
3 8" x 8" CD-4 230/SA	26 10" x 8" HV SA DUCT FR ABV 1090 CFM	50 14" x 10" LV SA DUCT FR ABV	74 CR-1 100/EA
4 8" x 8" CD-2 180/SA	27 8" x 8" EA DUCT UP	51 14" x 12" EA DUCT UP	75 CR-2 280/EA
5 6" x 8" CD-2 110/SA	28 12" x 18" CD-4 310/SA	52 10" x 8" HV SA DUCT FR ABV 970 CFM	76 16" x 12" EA DUCT UP 1400 CFM
6 7" x 8" HV SA DUCT FR ABV 1820 CFM	29 10" x 8" HV SA DUCT FR ABV 1075 CFM	53 12" x 10" LV SA DUCT FR ABV	77 CR-2 200/EA
7 CR-1 130/RA	30 10" x 8" HV SA DUCT FR ABV 1010 CFM	54 12" x 12" EA DUCT UP	78 14" x 8" EA DUCT UP
8 10" x 8" HV SA DUCT FR ABV 1075 CFM	31 10" x 8" HV SA DUCT FR ABV 1010 CFM	55 12" x 12" CD-3 360 CFM	79 10" x 8" CD-3 150/SA
9 10" x 8" HV SA DUCT FR ABV 1010 CFM	32 18" x 18" CD-3 720/SA	56 18" x 14" EA DUCT UP 1840 CFM	80 9" x 8" CD-2 180/SA
10 10" x 8" HV SA DUCT FR ABV 1010 CFM	33 CR-3 320/EA	57 10" x 8" HV SA DUCT FR ABV 970 CFM	81 10" x 8" CD-2 150/SA
11 8" x 8" CD-4 110/EA	34 18" x 14" OVAL HV SA DUCT FR ABV 3340 CFM	58 18" x 14" EA DUCT UP 2550 CFM	82 12" x 12" EA DUCT UP
12 9" x 8" HV SA DUCT FR ABV 1075 CFM	35 12" x 14" OVAL HV SA DUCT FR ABV 3340 CFM	59 12" x 12" CD-3 340/SA	83 9" x 8" CD-3 120/SA
13 CR-1 90/RA	36 26" x 16" TR 1090/EA	60 12" x 12" CD-2 410/SA	84 CR-1 140/EA
14 CR-1 70/EA	37 6" x 8" CD-2 125/SA	61 10" x 8" LV SA DUCT FR ABV	85 CR-2 150/EA
15 12" x 10" RA DUCT UP 780 CFM	38 CR-3 350/EA	62 12" x 12" LV SA DUCT FR ABV	86 10" x 8" EA DUCT UP
16 CR-2 815/RA	39 12" x 12" CD-4 300/SA	63 CR-1 130/EA	87 10" x 8" EA DUCT UP
17 10" x 8" RA DUCT UP	40 10" x 8"	64 CR-2 150/EA	88 10" x 8" EA DUCT UP
18 CR-2 250/RA	41 10" x 8"	65 CR-1 130/EA	89 6" x 8" CD-3 110 CFM
19 6" x 4" RA DUCT UP	42 10" x 8"	66 6" x 8" LV SA DUCT FR ABV	90 CR-2 210/EA
20 CR-1 140/RA	43 6" x 8" CD-2 80/SA	67 6" x 8" EA DUCT UP	91 CR-2 540/EA
21 16" x 12" RA DUCT UP 1330 CFM	44 CR-1 130/EA	68 6" x 8" LV SA DUCT FR ABV	92 CR-2 210/EA
22 6" x 8" RA DUCT UP	45 6" x 8" EA DUCT UP	69 6" x 8" CD-3 75/SA	93 CONNECT 10" x 8" DUCT TO EXHAUST CANOPY OUTLET
23 16" x 12" RA DUCT UP 1330 CFM	46 6" x 8" EA DUCT UP	70 6" x 8" LV SA DUCT FR ABV	94 20" x 12" LV SA DUCT FR ABV 1470 CFM
24 6" x 8" RA DUCT UP	47 14" x 6" EA DUCT UP	71 6" x 8" LV SA DUCT FR ABV	95 14" x 10" LV SA DUCT FR ABV 1470 CFM
25 12" x 10" RA DUCT UP 640 CFM	48 CR-1 50/EA	72 6" x 8" CD-2 100/SA	96 FOR CONT. OF STM. PIPING SEE PARTIAL PLAN ON THIS DWG.

one and one half inches = one foot

one inch = one foot

one quarter inch = one foot

one eighth inch = one foot

one eighth inch = one foot

one quarter inch = one foot

one half inch = one foot

three eighths inch = one foot

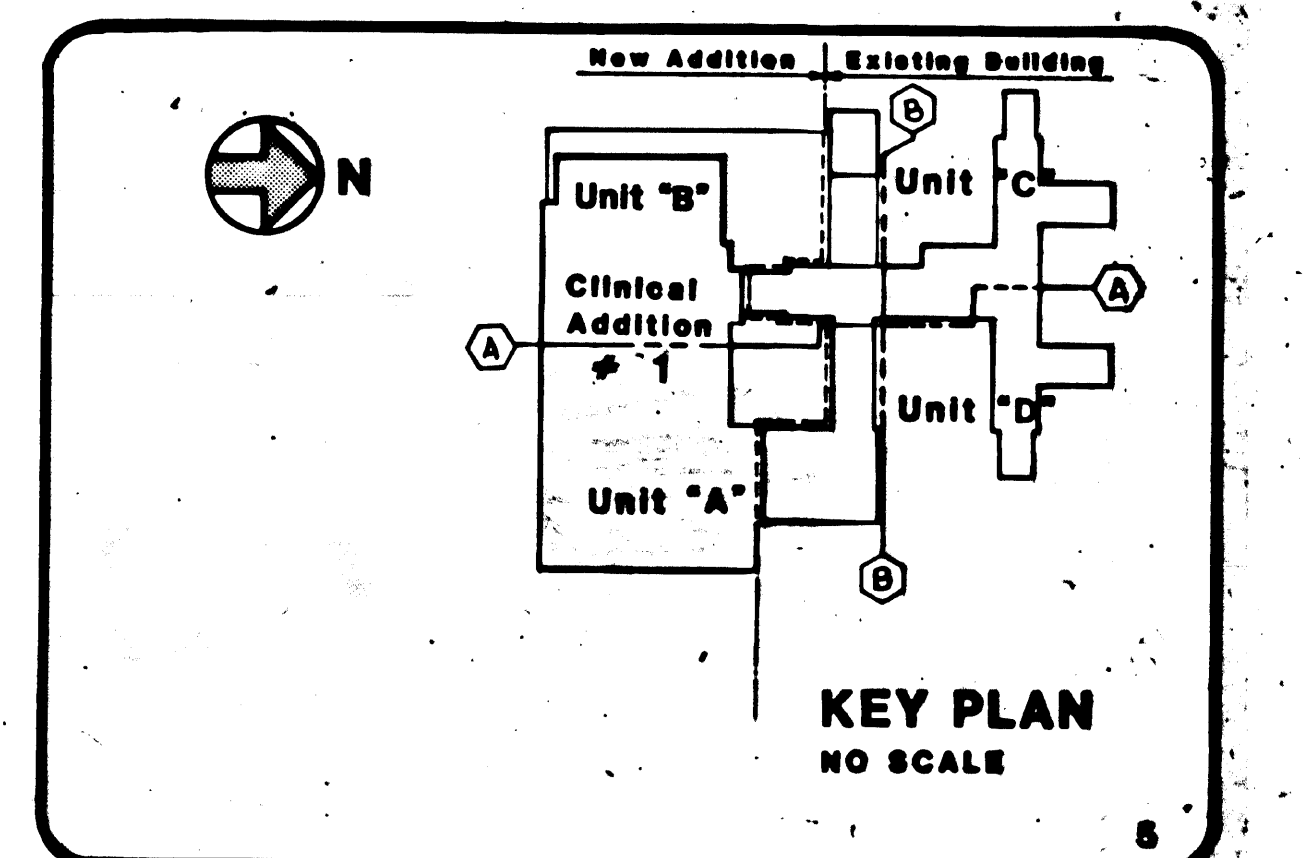
three quarters inch = one foot

one inch = one foot

one half inch = one foot

one quarter inch = one foot

one eighth inch = one foot



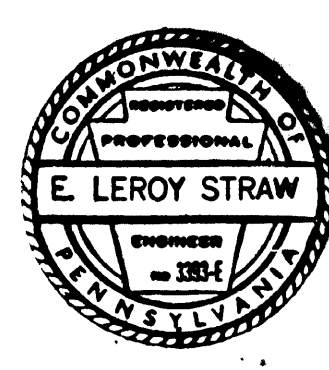
AS-BUILT Dwg. FSA #190

Revisions

Date

RATED PARTITION LEGEND (FIRE & SMOKE)

[Symbol]	1 HOUR RATED PARTITION
[Symbol]	1 HOUR RATED PARTITION & SMOKE BARRIER
[Symbol]	2 HOUR RATED PARTITION
[Symbol]	2 HOUR RATED PARTITION & SMOKE BARRIER
[Symbol]	2 HOUR RATED HORIZONTAL EXIT
[Symbol]	2 HOUR RATED HORIZONTAL EXIT & SMOKE BARRIER



HAYES, LARGE, SUCKLING, FRUTH & WEDGE ARCHITECTS

H. F. LENZ COMPANY - MECHANICAL & ELECTRICAL ENGINEERING CONSULTANTS

JAMES McFARLAND & ASSOCIATES, INC. FOOD SERVICE CONSULTANTS

LERCH, BATES & ASSOCIATES, INC. - TRANSPORTATION SYSTEM CONSULTANTS

JOSEPH W. COOKE & ASSOCIATES STRUCTURAL CONSULTANTS

HANSCOMB ASSOCIATES, INC. COST ESTIMATING CONSULTANTS

Drawing Title

FIFTH FLOOR PLAN UNIT "A"

Approved: Project Director

[Signature]

Project Title	CLIN. ADDN/RENOVATN/240 BED N.H.C.U.	Date	2-20-87
Phase	PHASE III - CLIN. ADDN/RENOVATN/ PARKING STRUCTURE	Project No.	642-034-C
Building Number	ONE	Checked	E.L.S.
Location	V.A.M.C. PHILADELPHIA, PA.	Drawn	D.L.S.
Drawing No.	1-H38	Project Director	[Signature]
Drawing 38 of 123			

Veterans Administration