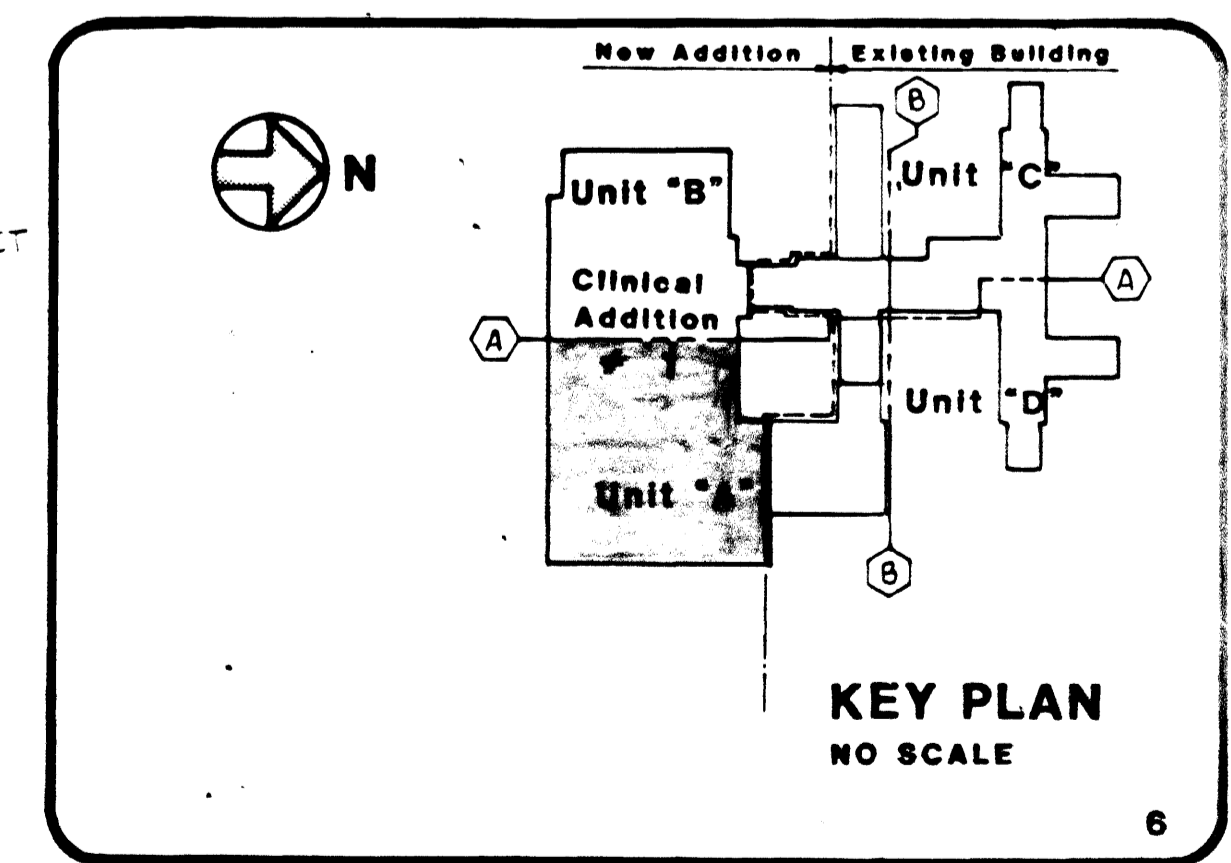
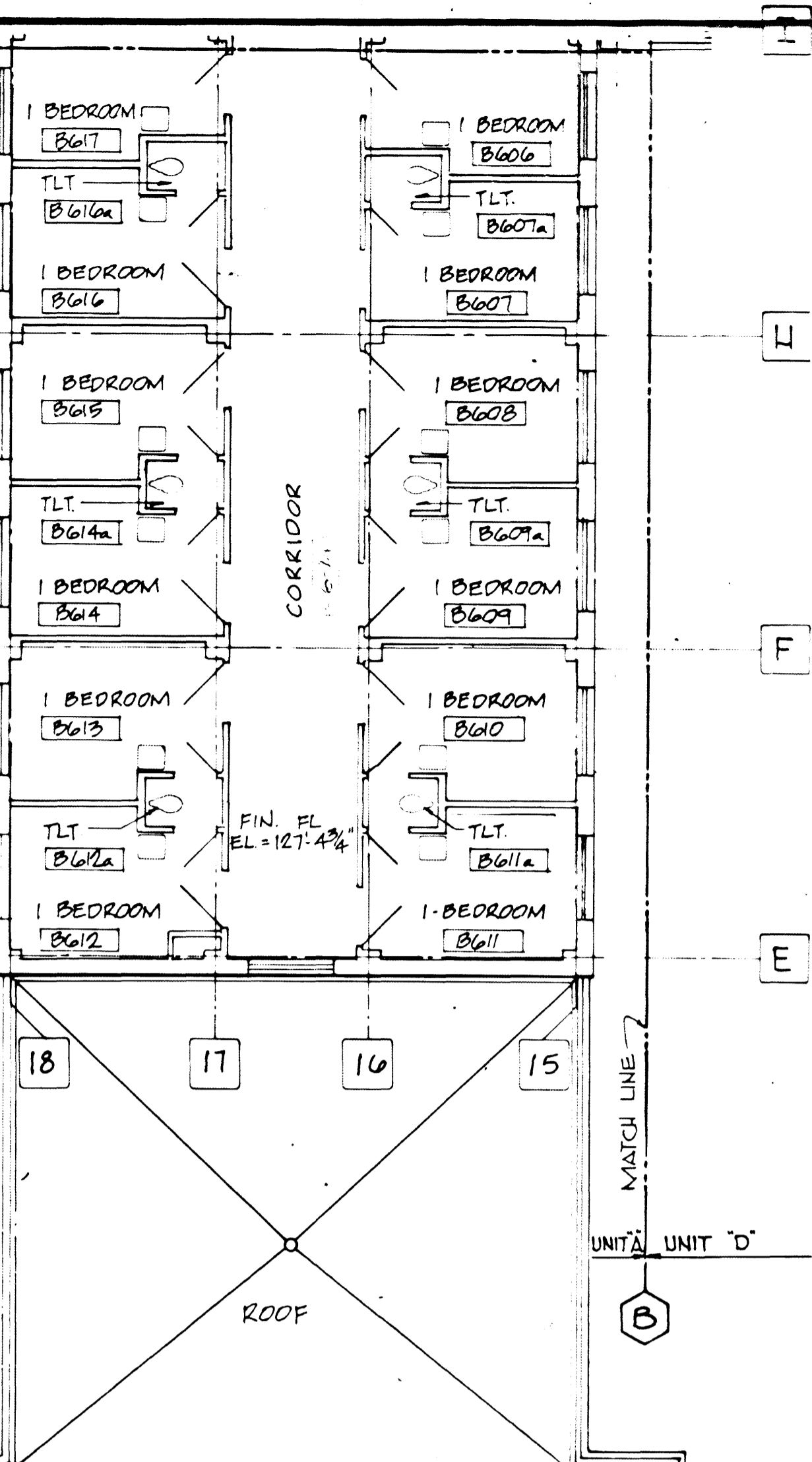


- NOTES ELSEWHERE**
- 1 7" HV SA DUCT DOWN
 - 2 8" x 4" RA DUCT FR BLW
 - 3 8" x 8" EA DUCT FR BLW
 - 4 8" x 8" RA DUCT FR BLW
 - 5 12" x 12" LV SA DUCT DOWN
 - 6 10" x 8" LV SA DUCT DOWN
 - 7 10" x 8" HV SA DUCT DN 1075 CFM
 - 8 8" x 8" LV SA DUCT DOWN
 - 9 14" x 12" EA DUCT FR BLW
 - 10 10" x 8" EA DUCT FR BLW
 - 11 10" x 8" EA DUCT FR BLW
 - 12 CVB-69
 - 13 16" x 18" EA DUCT FR BLW
 - 14 12" x 12" EA DUCT FR BLW
 - 15 CVB-33
 - 16 18" x 18"
 - 17 10" x 14" LV SA DUCT DOWN 850 CFM
 - 18 24" x 18"
 - 19 10" x 8" LV SA DUCT DOWN 395 CFM
 - 20 14" x 12"
 - 21 14" x 12" LV SA DUCT DOWN 425 CFM
 - 22 14" x 10"
 - 23 14" x 10" LV SA DUCT DOWN 850 CFM
 - 24 8" x 4"
 - 25 12" x 6"
 - 26 12" x 12" LV SA DUCT DOWN
 - 27 8" x 8" LV SA DUCT DOWN
 - 28 18" x 8" LV SA DUCT DOWN
 - 29 12" x 10" LV SA DUCT DOWN 780 CFM
 - 30 14" x 12" LV SA DUCT DOWN 875 CFM
 - 31 16" x 18" EA DUCT FR BLW
 - 32 8" x 4" EA DUCT FR BLW
 - 33 14" x 8" EA DUCT FR BLW
 - 34 10" x 8"
 - 35 8" x 8" LV SA DUCT DOWN
 - 36 12" x 8" LV SA DUCT DOWN
 - 37 7" x 8" HV SA DUCT DOWN
 - 38 8" x 8" LV SA DUCT DOWN
 - 39 CVB-67
 - 40 CVB-61
 - 41 10" x 8" HV SA DUCT DN 970 CFM
 - 42 14" x 16" EA DUCT FR BLW 1840 CFM
 - 43 18" x 12" EA DUCT FR BLW 1410 CFM
 - 44 14" x 8" EA DUCT FR BLW
 - 45 ETB-4
 - 46 10" x 10" EA DUCT FR BLW
 - 47 8" x 8" EA DUCT FR BLW
 - 48 12" x 8" EA DUCT FR BLW
 - 49 16" x 10" EA DUCT FR BLW
 - 50 14" x 10" RA DUCT FR BLW
 - 51 20" x 16" EA DUCT FR. BLW. 2570 CFM & 26" x 8" EA DUCT UP 4690 CFM
 - 52 8" x 8" EA DUCT FR. BLW. & UP 340 CFM
 - 53 32" x 24" EA DUCT FR. BLW. & UP 3690 CFM
 - 54 38" x 36" EA DUCT FR. BLW. & UP 4750 CFM
 - 55 12" x 12" LV SA DUCT UP 930 CFM
 - 56 12" x 8" LV SA DUCT FR. BLW. & DN 385 CFM
 - 57 12" x 6" EXH. DUCT FR. BLW. 6 UP 385 CFM
 - 58 14" x 10" LV SA DUCT FR. BLW. & DN 1035 CFM
 - 59 14" x 20" EXH. DUCT FR. BLW. & UP 1035 CFM
 - 60 20" x 30" DISCH. DUCT UP 6400 CFM
 - 61 24" x 24" UP W/TRANS TO GRAVITY INTAKE HOOD
 - 62 4" DEEP WATERPROOF DEPRESSION IN BOTTOM OF ELBOW

three inches = one foot
 one and one half inches = one foot
 three quarters inch = one foot
 one half inch = one foot
 three eighths inch = one foot
 one quarter inch = one foot
 one eighth inch = one foot



As-Built Dwg. COSA 2E

Revisions	Date

RATED PARTITION LEGEND (FIRE & SMOKE)

[Symbol]	1 HOUR RATED PARTITION
[Symbol]	1 HOUR RATED PARTITION & SMOKE BARRIER
[Symbol]	2 HOUR RATED PARTITION
[Symbol]	2 HOUR RATED PARTITION & SMOKE BARRIER
[Symbol]	ME
[Symbol]	2 HOUR RATED HORIZONTAL EXIT & SMOKE BARRIER



HAYES, LARGE, SUCKLING, FRUTH & WEDGE ARCHITECTS

H. F. LENZ COMPANY - MECHANICAL & ELECTRICAL ENGINEERING CONSULTANTS

JAMES McFARLAND & ASSOCIATES, INC. - FOOD SERVICE CONSULTANTS

LERCH, BATES & ASSOCIATES, INC. - TRANSPORTATION SYSTEM CONSULTANTS

JOSEPH W. COOKE & ASSOCIATES - STRUCTURAL CONSULTANTS

HANSCOMB ASSOCIATES, INC. - COST ESTIMATING CONSULTANTS

Drawing Title: **SIXTH FLOOR PLAN UNIT "A" DUCTWORK**

Approved: Project Director

Scale: 1/8" = 1'-0"

Project Title	Date		
CLIN. ADDN/RENOVATN/240 BED N.H.C.U.	2-87		
Phase	Project No.		
PHASE III - CLIN. ADDN/RENOVATNS/PARKING STRUCTURE	642-034-C		
Building Number	Checked	Drawn	DRAWING NO.
ONE	E.L.S.	D.L.S.	1-H40
Location	Drawing No. of 23		
V.A.M.C. PHILADELPHIA, PA.	Veterans Administration		