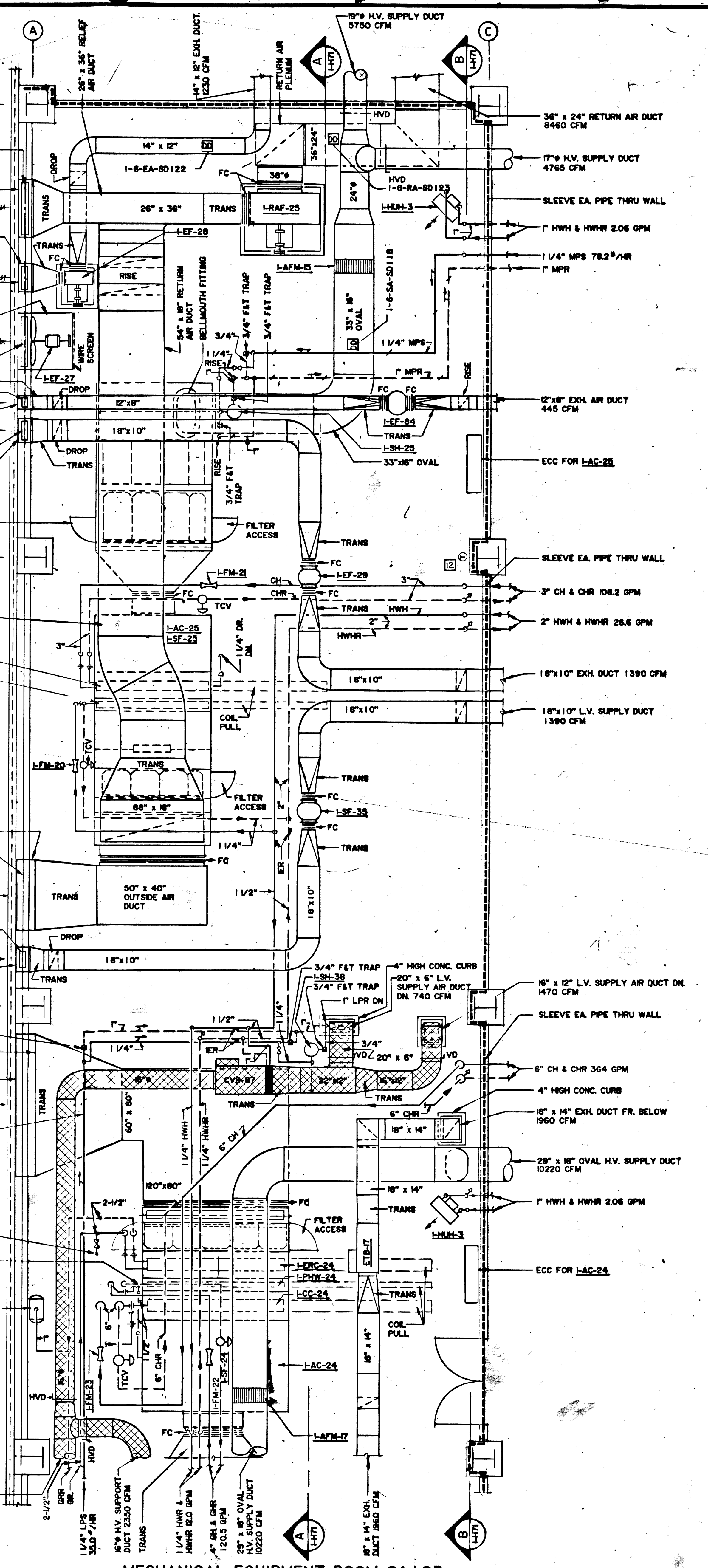
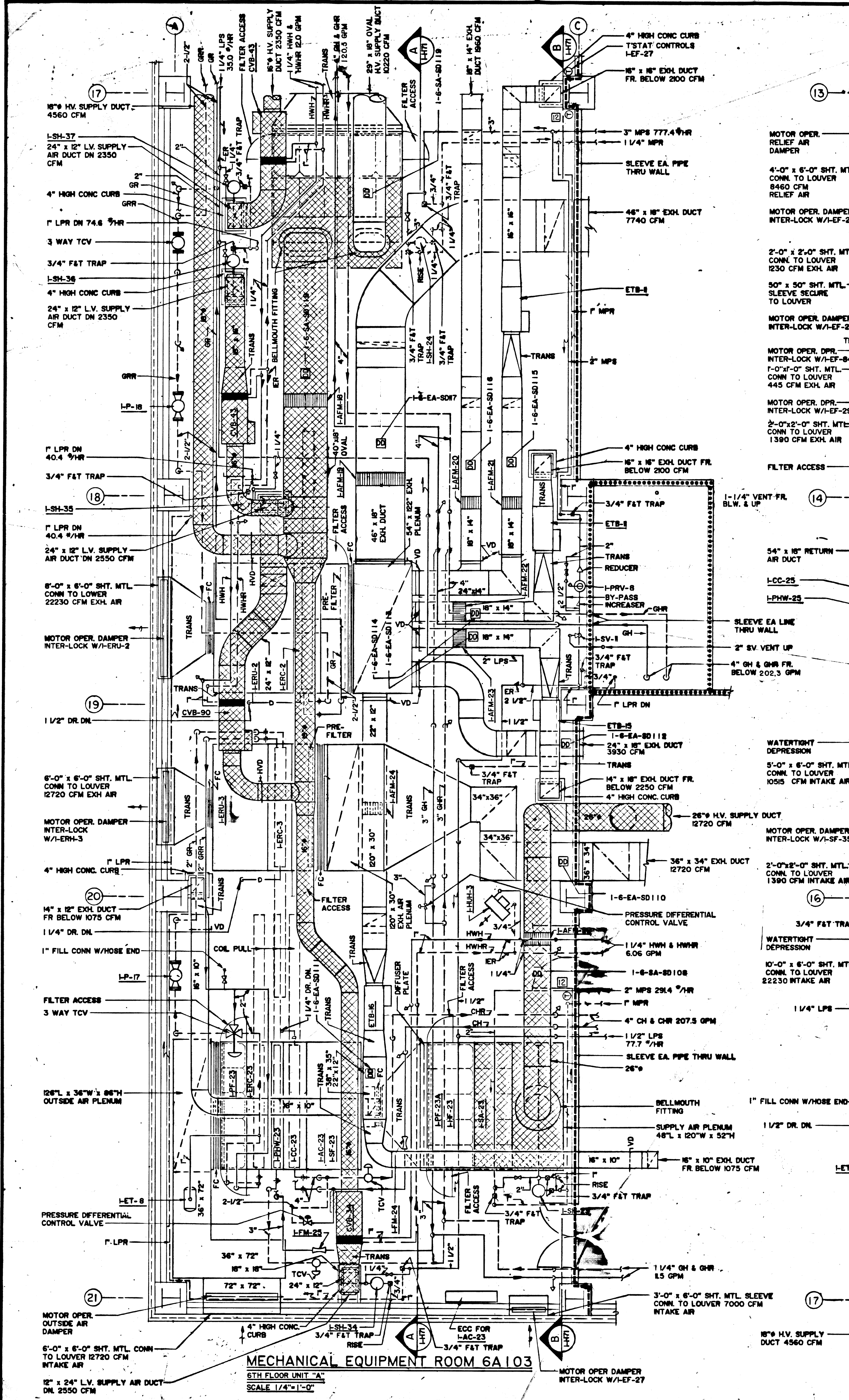


three inches = one foot  
 one and one half inches = one foot  
 one inch = one foot  
 three quarters inch = one foot  
 one half inch = one foot  
 three eighths inch = one foot  
 one quarter inch = one foot  
 one eighth inch = one foot



NOTE:  
 FOR CONT. OF PIPING AND DUCTWORK  
 REFER TO DWGS. NO. 1-H38, 1-H40 AND 1-H41

NOTE:  
 MOUNT HORIZ. UNIT HEATERS NEAR CEILING

As-Built DWG	8-18-95
Revisions	Date

RATED PARTITION LEGEND (FIRE & SMOKE)	
[Symbol]	1 HOUR RATED PARTITION
[Symbol]	1 HOUR RATED PARTITION & SMOKE BARRIER
[Symbol]	2 HOUR RATED PARTITION
[Symbol]	2 HOUR RATED PARTITION & SMOKE BARRIER
[Symbol]	2 HOUR RATED HORIZONTAL EXIT
[Symbol]	2 HOUR RATED HORIZONTAL EXIT & SMOKE BARRIER



**HAYES, LARGE, SUCKLING, FRUTH & WEDGE** ARCHITECTS  
**H. F. LENZ COMPANY - MECHANICAL & ELECTRICAL ENGINEERING CONSULTANTS**  
**JAMES McFARLAND & ASSOCIATES, INC. - FOOD SERVICE CONSULTANTS**  
**LERCH, BATES & ASSOCIATES, INC. - TRANSPORTATION SYSTEM CONSULTANTS**  
**JOSEPH W. COOKE & ASSOCIATES - STRUCTURAL CONSULTANTS**  
**HANSCOMB ASSOCIATES, INC. - COST ESTIMATING CONSULTANTS**

Drawing Title  
**MECHANICAL EQUIPMENT ROOM PLANS  
 SIXTH FLOOR - UNIT "A"**  
 Approved: Project Director  
*[Signature]*

Project Title  
**CLIN. ADDN/RENOVATN/240 BED N.H.C.U.  
 PHASE III - CLIN. ADDN/RENOVATNS/  
 PARKING STRUCTURE**  
 Building Number  
**ONE**  
 Location  
**V.A.M.C. PHILADELPHIA, PA.**

JOB NO. 2198-3  
 FILE NO. 0120-008-0932  
 Date  
**2-20-87**  
 Project No.  
**642-034-C**  
 Drawing No.  
**1-H70**  
 Drawing 12 of 125  
**Veterans Administration**