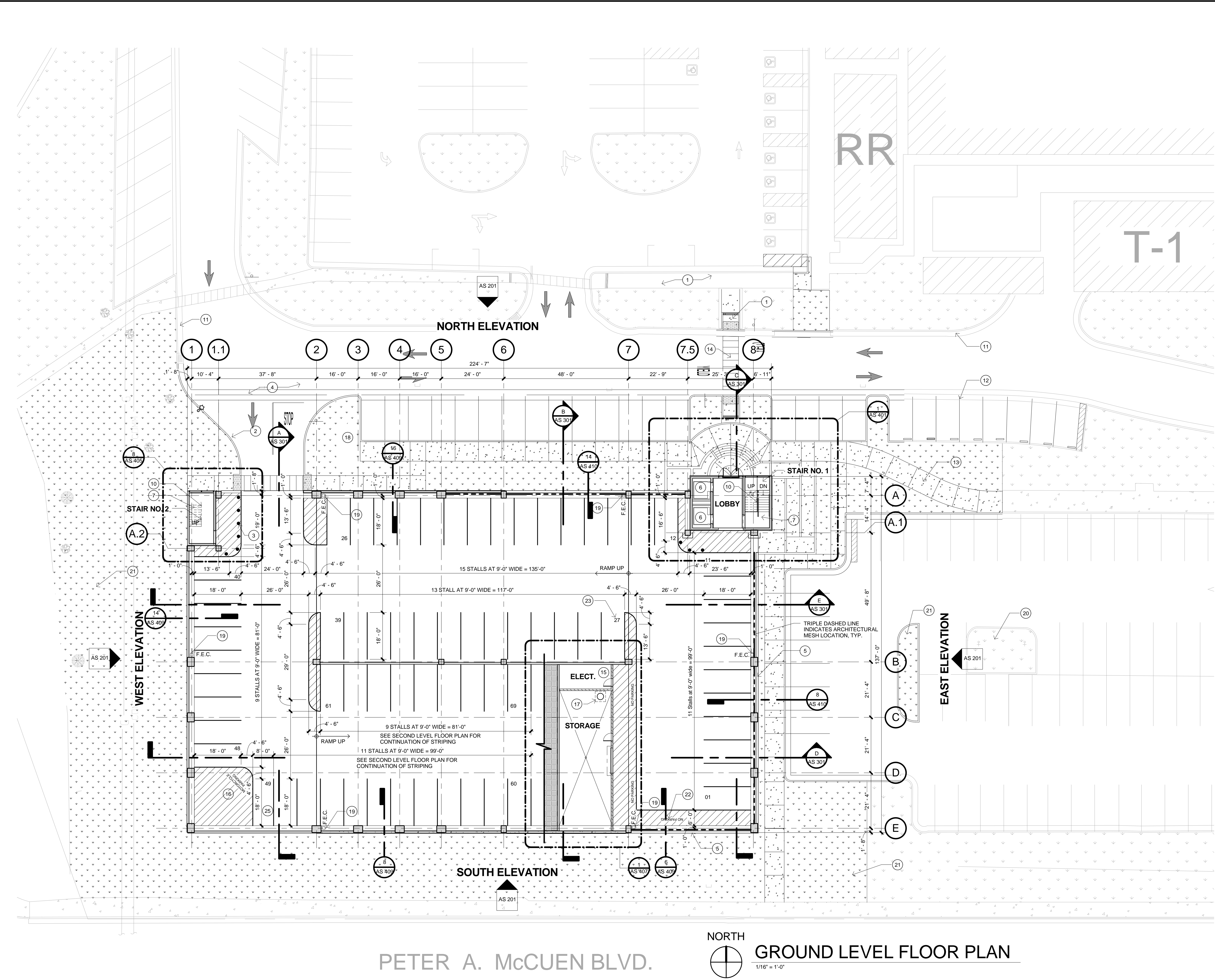


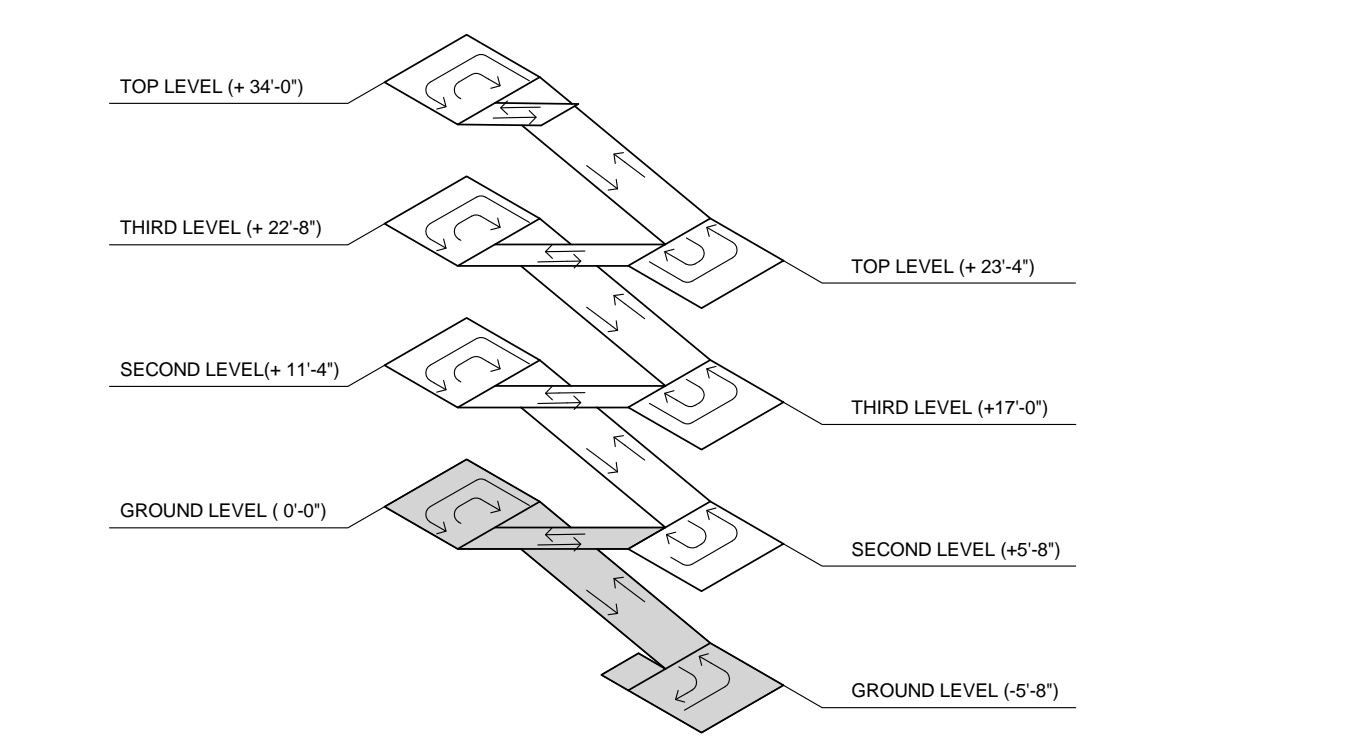
three inches = one foot
one and one half inches = one foot
one inch = one foot
three quarters inch = one foot
one half inch = one foot
three eighths inch = one foot
one quarter inch = one foot
one eighth inch = one foot

1 2 3 4 5 6 7 8 9






- ### SHEET NOTES
- NOTE:** PARKING STRUCTURE IS DESIGNED WITH A WARPED SLAB. ACTUAL ELEVATION OF SLAB MAY DIFFER SLIGHTLY FROM DESIGN CONDITIONS. VERIFY FIELD DIMENSIONS PRIOR TO PREPARING SHOP DRAWINGS AND FABRICATING STAIRS OR OTHER BUILDING SYSTEMS OR ELEMENTS THAT SPANS FLOOR LEVELS.
 - SEE STRUCTURAL DRAWINGS FOR DIMENSIONS OF ALL STRUCTURAL ELEMENTS AND OVERALL BUILDING SECTIONS.
 - SEE CIVIL DRAWINGS FOR ELEVATION 0'-0" REFERENCE.
 - COORDINATE LOCATION OF FLOOR DRAINS WITH PLUMBING AND STRUCTURAL DRAWINGS.
 - PROVIDE BACKER ROD AND SEALANT AT ALL HORIZONTAL AND VERTICAL JOINTS. FOR JOINTS LARGER THAN 1 1/4" PROVIDE COMPRESSION SEAL, U.N.O.
 - REFER TO ELECTRICAL DRAWINGS FOR EXIT SIGNS AND EMERGENCY EXIT LIGHTING.
 - REFER TO STRUCTURAL DRAWINGS FOR SLAB DEPRESSIONS.
 - SEE SHEETS AS 501THRU AS 507 FOR SIGNAGE AND TRAFFIC INFORMATION.
 - ALL UTILITY PIPING AND EXPOSED CONDUIT TO BE SLEEVED THROUGH BEAMS, HIGH AND TIGHT AGAINST BOTTOM OF SLAB. SEE STRUCTURAL DRAWINGS FOR SLEEVE DETAIL. PAINT UTILITY PIPING AND EXPOSED CONDUIT OFF WHITE.
 - SEE CIVIL AND STRUCTURAL DRAWINGS FOR ADDITIONAL INFORMATION ON FLOOR LEVELS / SLAB SLOPES AND GRADES.
 - ALL INTERIOR EXPOSED METAL ITEMS TO BE PAINTED OFF WHITE. SEE SPECIFICATIONS.
 - ALL INTERIOR EXPOSED CONCRETE SURFACES TO BE PAINTED OFF WHITE. SEE SPECIFICATIONS.
 - ALL PRECAST CONCRETE PANELS AND WALLS TO HAVE 3/4" CHAMFERED CORNERS.
 - SEE CIVIL DRAWINGS FOR ALL ACCESSIBILITY AND STRIPING DETAILS.
 - PROVIDE 1/4" x 12" METAL IMPACT PROTECTORS AROUND ROOF DRAINS AND HOSE BIB LOCATION. SEE MECHANICAL PLANS FOR LOCATIONS.
 - BUILDING NORTH: ROTATED 30.91+/- COUNTER-CLOCKWISE FROM TRUE NORTH. REFER TO CIVIL SITE FOR TRUE NORTH DESIGNATION.

- ### KEY NOTES
- CURB CUT WHEELCHAIR RAMP, CONCRETE SIDEWALK AND TRUNCATED DOMES TO MATCH EXISTING. TYPICAL. SEE CIVIL DRAWINGS.
 - CONCRETE CURB AND GUTTER. SEE CIVIL DRAWINGS.
 - BOLLARD AT 60 INCHES O.C., TYPICAL. SEE DETAIL 18 / AS 408.
 - A.C. PAVING ON ENGINEERED FILL. SEE CIVIL DRAWINGS.
 - CONCRETE RETAINING WALL. SEE STRUCTURAL DRAWINGS.
 - TRACTION ELEVATOR IN PRECAST CONCRETE HOISTWAY. CONTRACTOR TO CONFIRM CORRECT SIZE OF ELEVATOR HOISTWAY WITH THE ACTUAL EQUIPMENT TO BE INSTALLED.
 - PRECAST CONCRETE STAIRS AND LANDING.
 - EXISTING CONCRETE SIDEWALK. SEE CIVIL DRAWINGS.
 -
 - HANDRAILS AT STAIR. SEE SHEET AS 411.
 - EXISTING CONCRETE CURB AND GUTTER TO REMAIN. SEE CIVIL DRAWINGS.
 - PAVEMENT STRIPING, TYPICAL. SEE CIVIL DRAWINGS.
 - CONCRETE SIDEWALK, TYPICAL. SEE CIVIL DRAWINGS.
 - PEDESTRIAN CROSSWALK, TYPICAL. SEE CIVIL DRAWINGS.
 - ELECTRICAL ROOM. SEE ELECTRICAL DRAWINGS.
 - "MOTORCYCLE PARKING". 12 INCH HIGH PAVEMENT LETTERING PAINTED SOLID YELLOW. LETTERS TO BE CAPITALIZED HELVETICA MEDIUM.
 - SUMP PUMP. SEE PLUMBING DRAWINGS.
 - SAND / OIL INTERCEPTOR. SEE CIVIL AND PLUMBING DRAWINGS.
 - FIRE EQUIPMENT CABINET SECURELY FASTENED TO CONCRETE COLUMN (TOP OF CABINET AT +3'-6" MAX.). FIRE EXTINGUISHER RATING TO BE 2A,10B.C.
 - EXISTING TO REMAIN.
 - SEE LANDSCAPING DRAWINGS FOR NEW WORK ON SHEETS LS 101 AND LS 201.
 - "NO PARKING". 12 INCH HIGH PAVEMENT LETTERING PAINTED SOLID YELLOW. LETTERS TO BE CAPITALIZED HELVETICA MEDIUM.
 - PARKING STALL COUNT INFORMATION ONLY. DO NOT PAINT ON PAVING.
 -
 - COMPACT STALL.



GROUND LEVEL ISOMETRIC

N.T.S.

		CONSULTANTS:		ARCHITECT/ENGINEERS:	 835 W. Ashlan Ave. Clovis, CA 93612 TEL: (559) 346-0800 FAX: (559) 346-0800 E: FRAMPTON@PCE-ENG.COM	Drawing Title	Project Title:	Project Number:	Office of Construction and Facilities Management
						Ground Level Floor Plan	VA Northern California Health Care System Parking Structure	612 - CSI - 102	
								Building Number: N/A	
						Approved: Project Director	Location:	Drawing Number:	 Department of Veterans Affairs
							10535 Hospital Way, Mather, CA 95655	AS 101	
							Date: 06/15/2011	Checked: ECF	
Revisions:	Date				Dwg. 34 of 122				