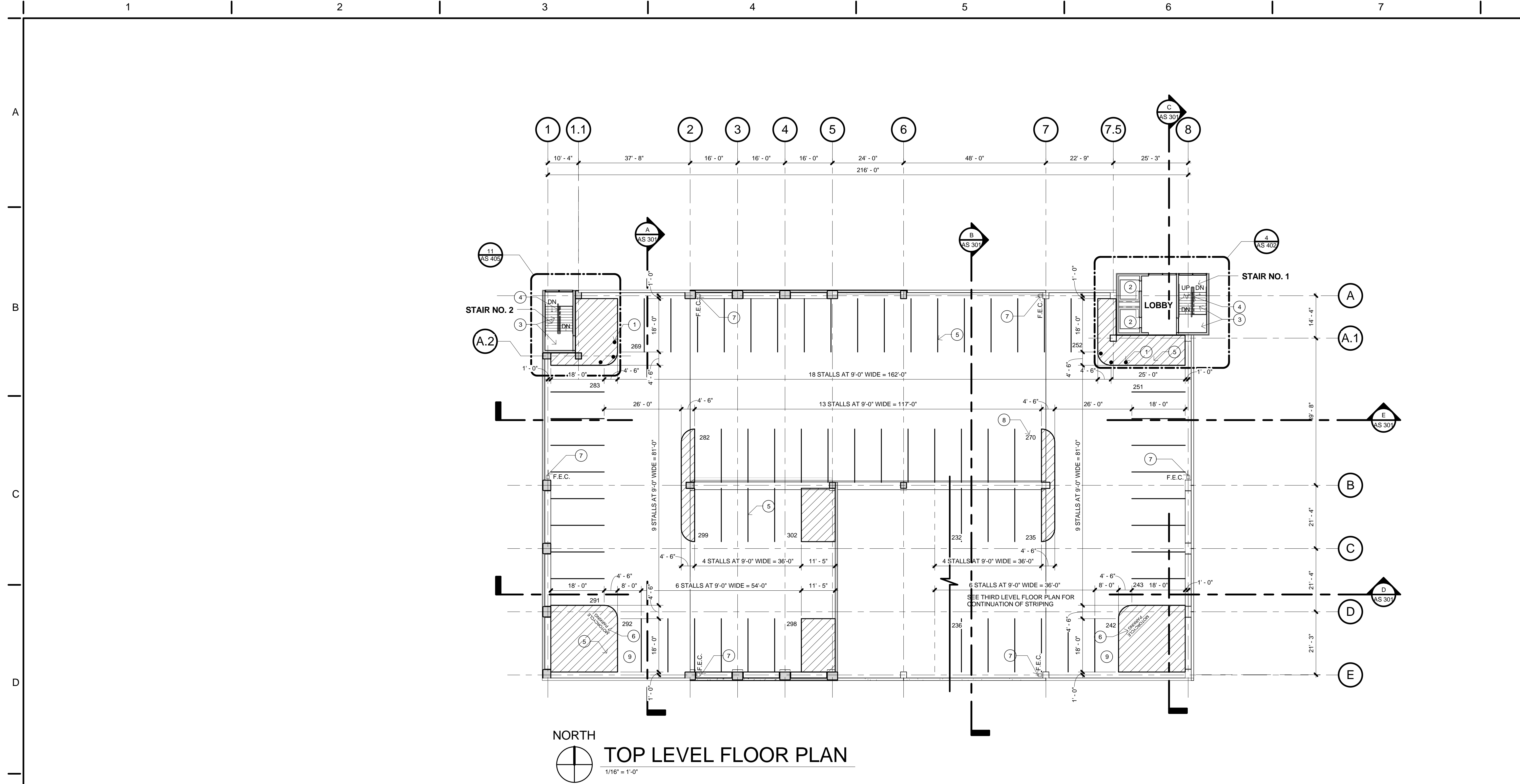


three inches = one foot  
one and one half inches = one foot  
one inch = one foot  
three quarters inch = one foot  
one half inch = one foot  
three eighths inch = one foot  
one quarter inch = one foot  
one eighth inch = one foot

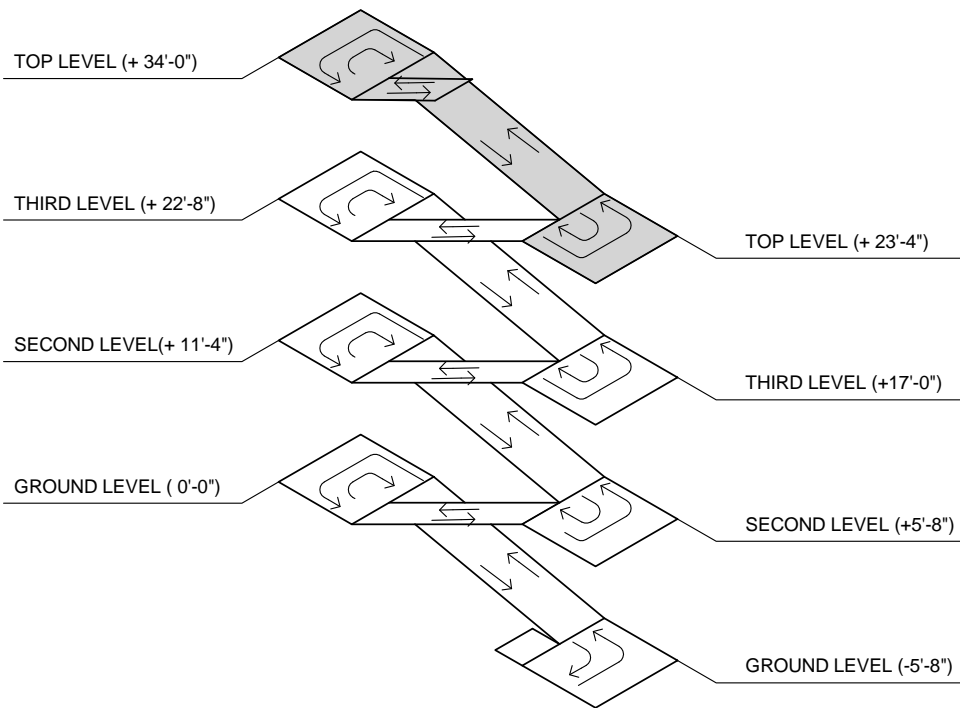


## SHEET NOTES

- NOTE:** PARKING STRUCTURE IS DESIGNED WITH A WARPED SLAB. ACTUAL ELEVATION OF SLAB MAY DIFFER SLIGHTLY FROM DESIGN CONDITIONS. VERIFY FIELD DIMENSIONS PRIOR TO PREPARING SHOP DRAWINGS AND FABRICATING STAIRS OR OTHER BUILDING SYSTEMS OR ELEMENTS THAT SPANS FLOOR LEVELS.
- SEE STRUCTURAL DRAWINGS FOR DIMENSIONS OF ALL STRUCTURAL ELEMENTS AND OVERALL BUILDING SECTIONS.
- SEE CIVIL DRAWINGS FOR ELEVATION  $\pm 0'$  REFERENCE.
- COORDINATE LOCATION OF FLOOR DRAINS WITH PLUMBING AND STRUCTURAL DRAWINGS.
- PROVIDE BACKER ROD AND SEALANT AT ALL HORIZONTAL AND VERTICAL JOINTS. FOR JOINTS LARGER THAN 1 1/4" PROVIDE COMPRESSION SEAL, U.N.O.
- REFER TO ELECTRICAL DRAWINGS FOR EXIT SIGNS AND EMERGENCY EXIT LIGHTING.
- REFER TO STRUCTURAL DRAWINGS FOR SLAB DEPRESSIONS.
- SEE SHEETS AS 501 THRU AS 507 FOR SIGNAGE AND TRAFFIC INFORMATION.
- ALL UTILITY PIPING AND EXPOSED CONDUIT TO BE SLEEVED THROUGH BEAMS, HIGH AND TIGHT AGAINST BOTTOM OF SLAB. SEE STRUCTURAL DRAWINGS FOR SLEEVE DETAIL. PAINT UTILITY PIPING AND EXPOSED CONDUIT OFF WHITE.
- SEE CIVIL AND STRUCTURAL DRAWINGS FOR ADDITIONAL INFORMATION ON FLOOR LEVELS / SLAB SLOPES AND GRADES.
- ALL INTERIOR EXPOSED METAL ITEMS TO BE PAINTED OFF WHITE, SEE SPECIFICATIONS.
- ALL INTERIOR EXPOSED CONCRETE SURFACES TO BE PAINTED OFF WHITE, SEE SPECIFICATIONS.
- ALL PRECAST CONCRETE PANELS AND WALLS TO HAVE 3/4" BULLNOSE CORNERS.
- SEE CIVIL DRAWINGS FOR ALL ACCESSIBILITY AND STRIPING DETAILS.
- PROVIDE 1/4" x 12" METAL IMPACT PROTECTORS AROUND ROOF DRAINS AND HOSE BIB LOCATION. SEE MECHANICAL PLANS FOR LOCATIONS.
- BUILDING NORTH: ROTATED 30.91 +/- COUNTER-CLOCKWISE FROM TRUE NORTH. REFER TO CIVIL SITE FOR TRUE NORTH DESIGNATION.

## KEY NOTES

- BOLLARD AT 60" O.C., TYPICAL. SEE DETAIL 20 / AS 408.
- TRACTION ELEVATOR IN PRECAST SHAFT.
- PRECAST CONCRETE STAIRS AND LANDING, SEE STRUCTURAL DRAWINGS.
- HANDRAILS AT STAIRS, SEE SHEET AS 411.
- PAVEMENT STRIPING, TYPICAL. SEE CIVIL DRAWINGS.
- "MOTORCYCLE PARKING", 12" HIGH PAVEMENT LETTERING PAINTED SOLID YELLOW. LETTERS TO BE CAPITAL HELVETICA MEDIUM.
- FIRE EQUIPMENT CABINET SECURELY FASTENED TO CONCRETE COLUMN (TOP OF CABINET AT +3'-6" MAX.). FIRE EXTINGUISHER RATINGS TO BE 2A, 10B,C.
- PARKING STALL COUNT INFORMATION ONLY. DO NOT PAINT ON PAVING.
- COMPACT STALL.



## TOP LEVEL ISOMETRIC

N.T.S.

## CONSTRUCTION DOCUMENTS - FINAL SUBMISSION

CONSULTANTS:		ARCHITECT/ENGINEERS:		Drawing Title Top Level Floor Plan		Project Title: VA Northern California Health Care System Parking Structure		Project Number: 612 - CSI - 102		Office of Construction and Facilities Management  Department of Veterans Affairs							
				Approved: Project Director		Location: 10535 Hospital Way, Mather, CA 95655		Building Number: N/A									
Revisions:				Civil Engineer No. 64567 EXPIRES: 06/30/2011 STATE OF CALIFORNIA		Frampton Consulting Engineers Civil • Structural • Design • Construction 835 W. Ashlan Ave. Clovis, CA 93612 TEL: (559) 346-0800 FAX: (559) 346-0800 E: FRAMPTON@FCE-ENG.COM		Date: 06/15/2011		Checked: ECF		Drawn: RAT		Drawing Number: AS 104		Dwg. 37 of 122	