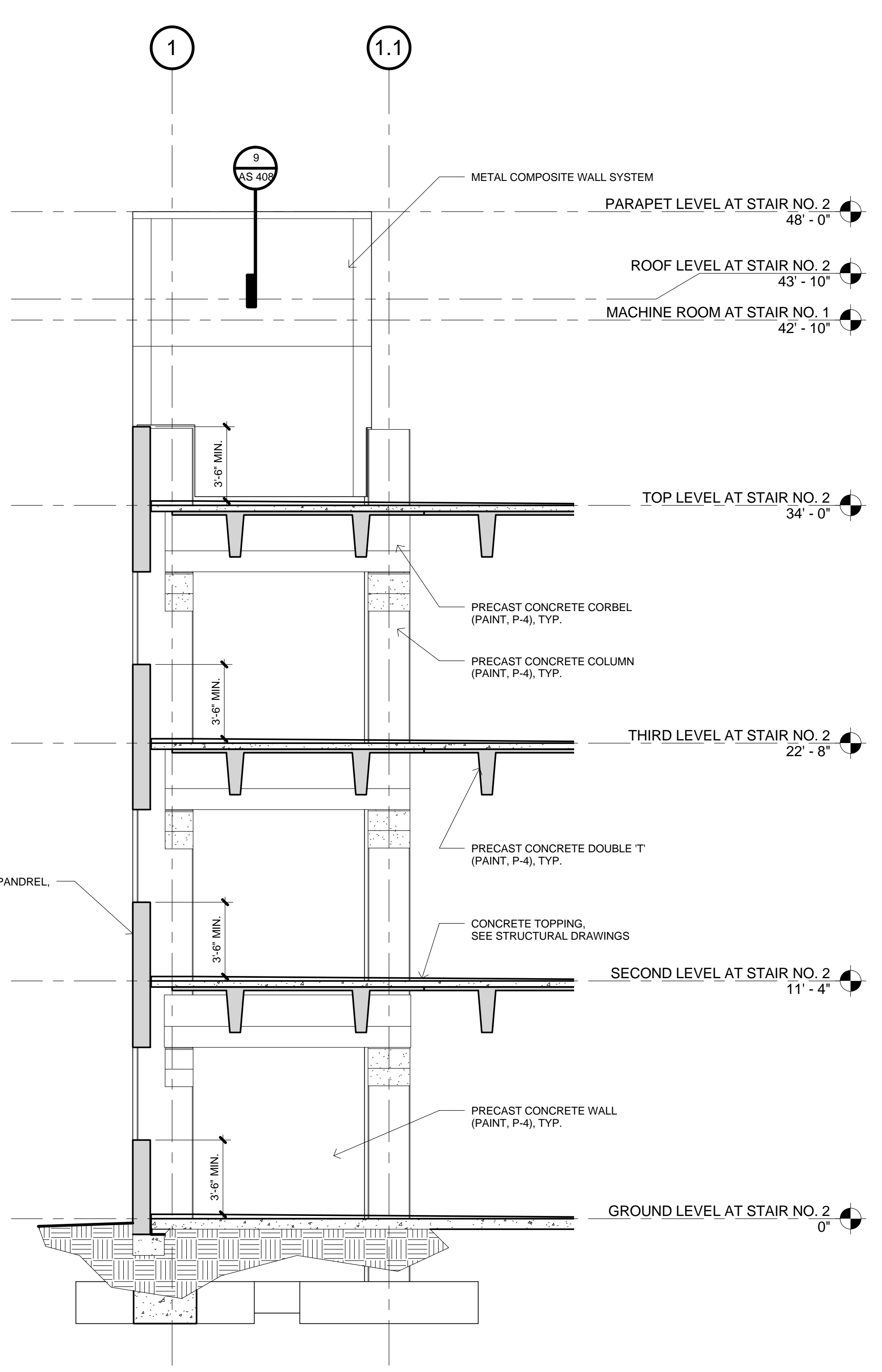
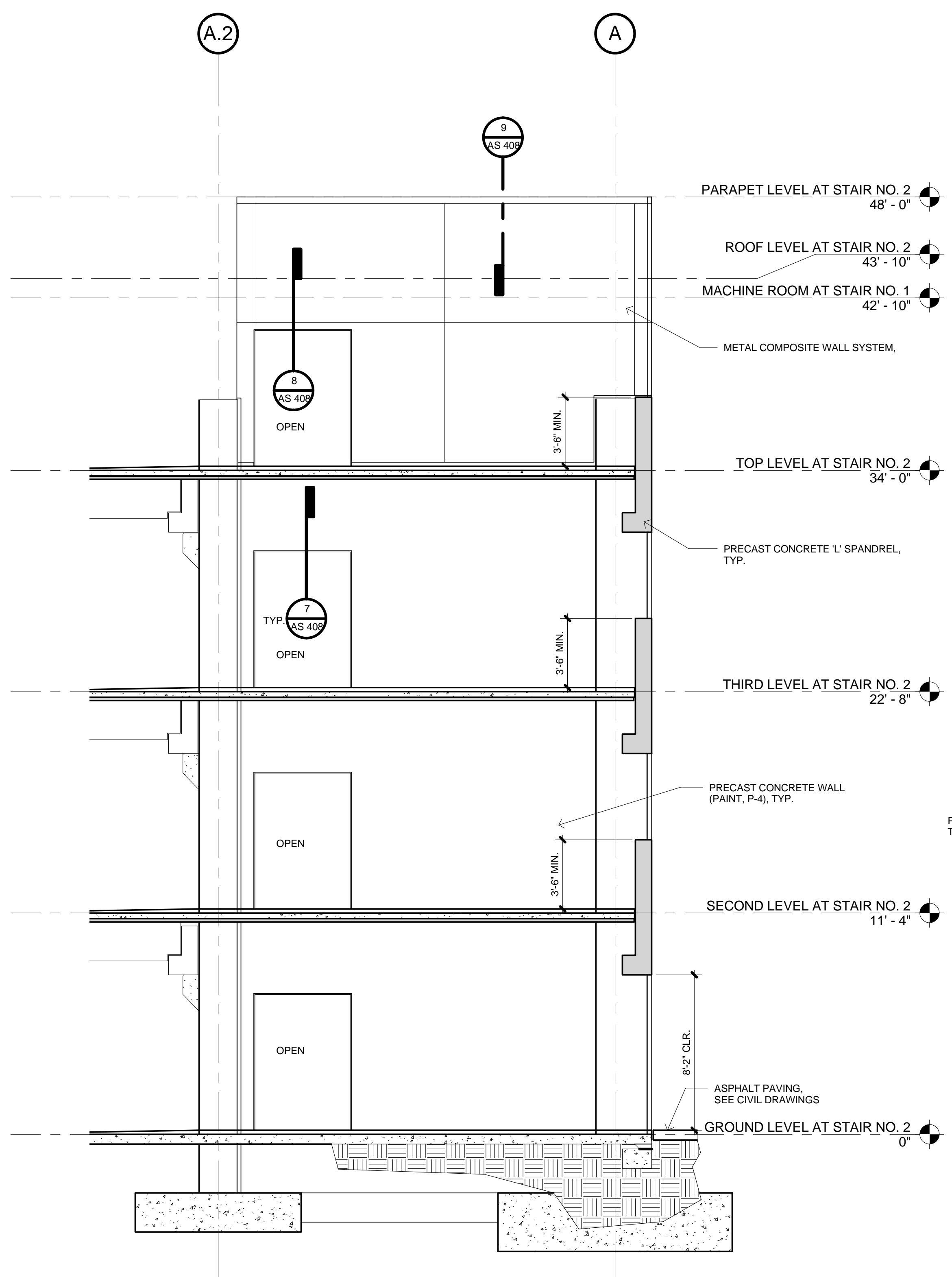
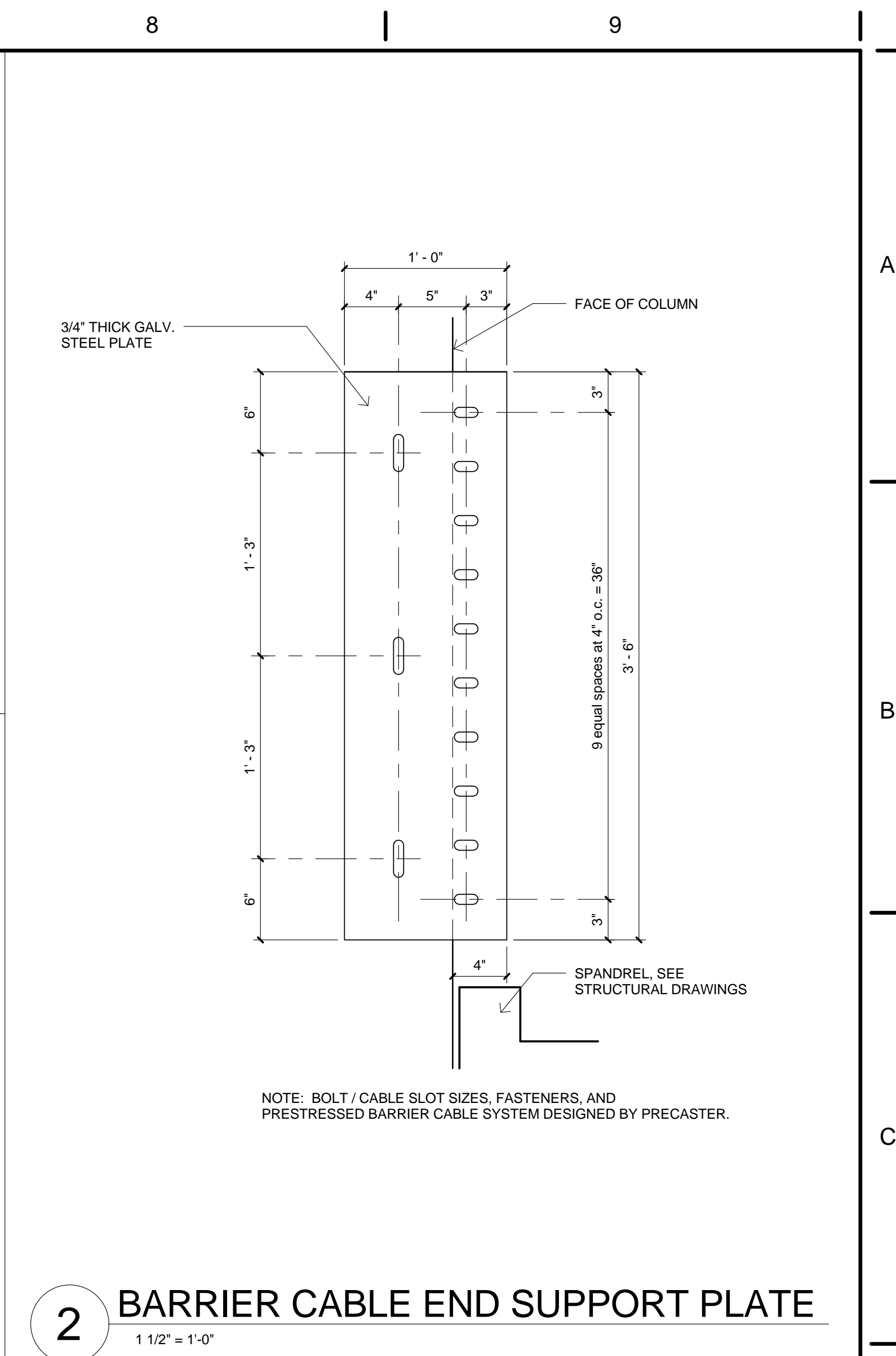
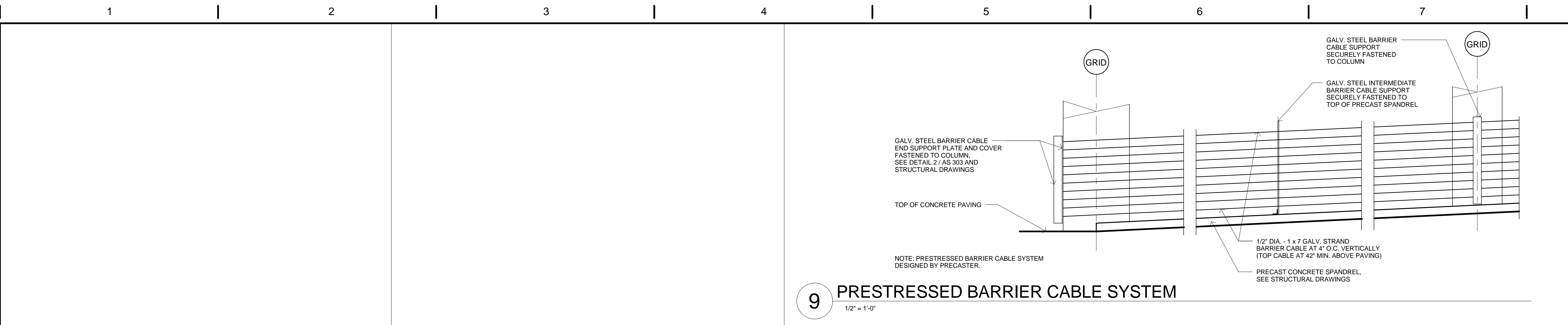


three inches = one foot
one and one half inches = one foot
one inch = one foot
three quarters inch = one foot
one half inch = one foot
three eighths inch = one foot
one quarter inch = one foot
one eighth inch = one foot



<div>Revisions:</div> <div>Date</div>		CONSULTANTS:		<div><div>REGISTERED PROFESSIONAL ENGINEER ERIC CHRISTOPHER FRAMPTON No. 64567 EXPIRES: 06/30/2011 CIVIL STATE OF CALIFORNIA</div><div><div>Frampton Consulting Engineers</div><div>Civil • Structural • Design • Construction</div><div>835 W. Ashlan Ave. Clovis, CA 93612 TEL: (559) 346-0800 FAX: (559) 346-0900 EFRAMPTON@PCE-ENG.COM</div></div></div>		ARCHITECT/ENGINEERS:		Drawing Title Section/Elevation Views at Stair No. 2		Project Title: VA Northern California Health Care System Parking Structure		Project Number: 612 - CSI - 102		Office of Construction and Facilities Management <div>Department of Veterans Affairs</div>					
						Approved: Project Director		Location: 10535 Hospital Way, Mather, CA 95655		Building Number: N/A									
										Date: 06/15/2011		Checked: ECF		Drawn: RAT		Drawing Number: AS 303		Dwg. 48 of 122	

CONSTRUCTION DOCUMENTS - FINAL SUBMISSION