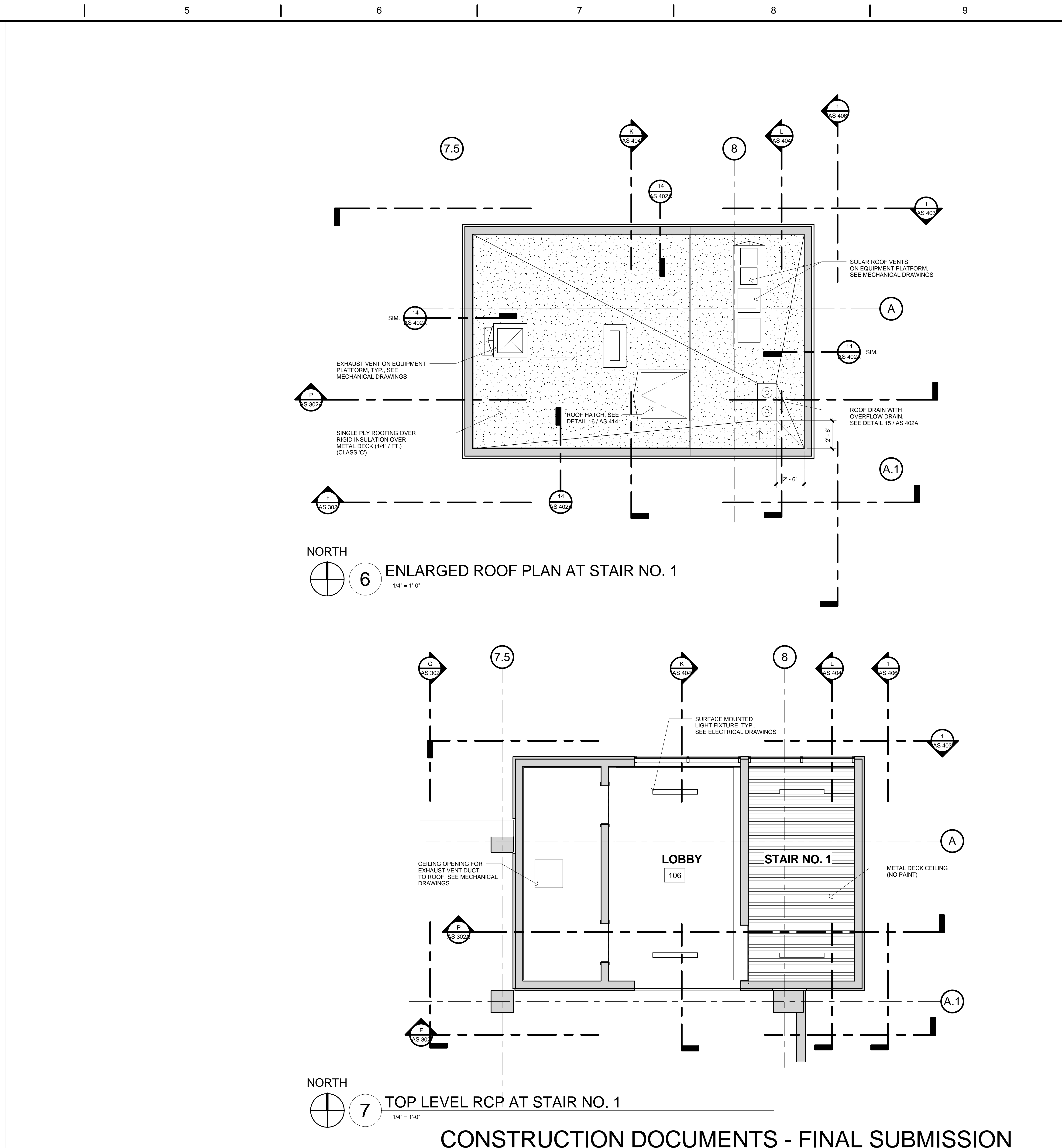
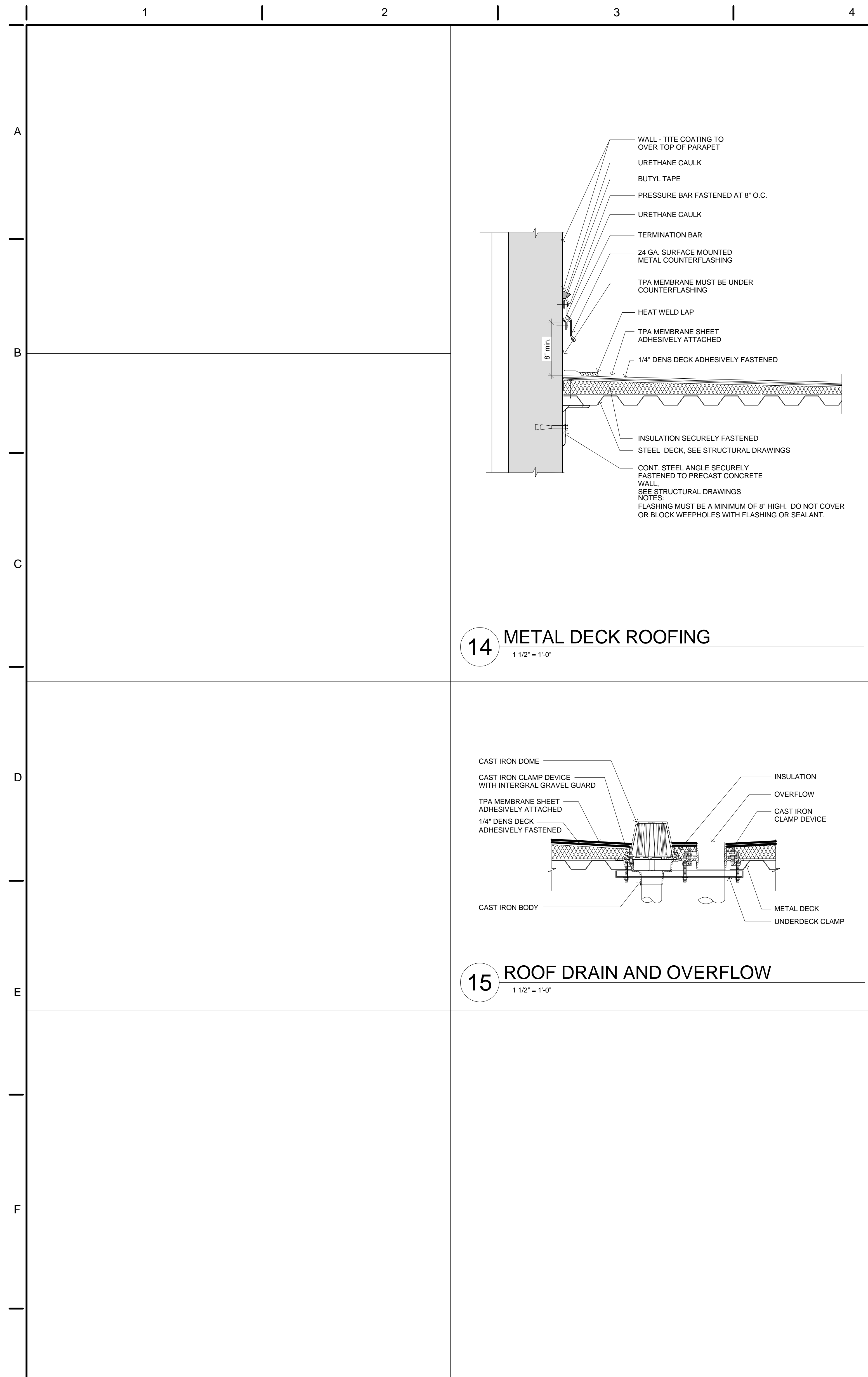




three inches = one foot  
one and one half inches = one foot  
one inch = one foot  
three quarters inch = one foot  
one half inch = one foot  
three eighths inch = one foot  
one quarter inch = one foot  
one eighth inch = one foot



CONSTRUCTION DOCUMENTS - FINAL SUBMISSION

		CONSULTANTS:	<div></div>	ARCHITECT/ENGINEERS: <div><div><div>Frampton Consulting Engineers</div></div><div>Civil • Structural • Design • Construction</div><div>895 W. Ashlan Ave. Clovis, CA 93612 TEL: (559) 346-0900 FAX: (559) 346-0900 E: FRAMPTON@FCE-ENG.COM</div></div>	Drawing Title Enlarged Stair No. 1 Plans	Project Title: VA Northern California Health Care System Parking Structure	Project Number: 612 - CSI - 102	Office of Construction and Facilities Management
					Building Number: N/A	Department of Veterans Affairs		
					Drawing Number: AS 402A			
					Dwg. 53 of 122			
					Approved: Project Director	Location: 10535 Hospital Way, Mather, CA 95655		
						Date: 06/15/2011	Checked: ECF	Drawn: RAT
Revisions:	Date							