

SHEET INDEX

GENERAL NOTES:

- GI 100 - COVER SHEET, SHEET INDEX, VICINITY MAP, TEAM DIRECTORY, GENERAL INFORMATION, CODES, AND SCOPE OF WORK
- GI 200 - GENERAL NOTES
- GI 210 - ABBREVIATIONS AND SYMBOLS
- GI 300 - FIRE-LIFE SAFETY PLANS AND ANALYSIS
- GI 301 - FIRE-LIFE SAFETY PLANS

CIVIL:

- C 100 - EXISTING SITE PLAN
- C 110 - TOPOGRAPHIC SURVEY
- C 120 - PHASING AND SWPPP
- C 200 - DEMOLITION PLAN
- C 300 - SITE PLAN
- C 400 - UTILITY PLAN
- C 500 - GRADING AND DRAINAGE PLAN
- C 600 - GRADING AND DRAINAGE PLAN
- C 610 - ENLARGED GRADING AND DRAINAGE PLAN
- C 700 - SITE SECTIONS
- C 710 - SITE SECTIONS
- C 720 - RAMP AND PLANTER SECTIONS
- C 800 - VEHICLE ACCESS PLAN
- C 810 - GEOTECHNICAL BORING LOGS
- C 900 - DETAILS
- C 1000 - DETAILS
- C 1100 - DETAILS

LANDSCAPING:

- LS 101 - LANDSCAPE PLAN
- LS 102 - LANDSCAPE PLAN
- LS 103 - LANDSCAPE PLAN
- LS 104 - LANDSCAPE PLAN
- LS 201 - IRRIGATION PLAN
- LS 202 - IRRIGATION PLAN
- LS 203 - IRRIGATION PLAN
- LS 204 - IRRIGATION PLAN
- LS 301 - LANDSCAPE DETAILS
- LS 302 - LANDSCAPE DETAILS

ARCHITECTURAL:

- AS 100 - ABBREVIATIONS AND SYMBOLS
- AS 101 - GROUND LEVEL FLOOR PLAN
- AS 102 - SECOND LEVEL PLAN
- AS 103 - THIRD LEVEL PLAN
- AS 104 - TOP LEVEL PLAN
- AS 201 - BUILDING ELEVATIONS
- AS 202 - INTERIOR AND EXTERIOR ELEVATIONS
- AS 203 - EXTERIOR ELEVATIONS AND EXTERIOR STAIRS
- AS 204 - PRECAST PANEL SIZES AND CONFIGURATION
- AS 205 - PRECAST PANEL SIZES AND CONFIGURATION
- AS 206 - PRECAST PANEL SIZES AND CONFIGURATION
- AS 207 - PRECAST PANEL SIZES AND CONFIGURATION
- AS 301 - BUILDING SECTIONS
- AS 302 - SECTION / ELEVATION VIEWS AT STAIR NO. 1
- AS 302A - SECTION AT STAIR NO. 1
- AS 303 - SECTION / ELEVATION VIEWS AT STAIR NO. 2
- AS 304 - WALL SECTIONS
- AS 305 - WALL SECTIONS
- AS 401 - ENLARGED STAIR NO. 1 PLANS
- AS 402 - ENLARGED STAIR NO. 1 PLANS
- AS 402A - ENLARGED STAIR NO. 1 PLANS
- AS 403 - PARTIAL NORTH / EAST ELEVATION AT STAIR NO. 1
- AS 404 - SECTIONS AT STAIRS AND LOBBY
- AS 405 - ENLARGED STAIR NO. 2 PLANS
- AS 406 - PARTIAL NORTH / WEST ELEVATION AT STAIR NO. 2
- AS 407 - ENLARGED STORAGE / ELECTRICAL ROOM AND DOOR SCHEDULE
- AS 408 - DETAILS
- AS 409 - DETAILS

ARCHITECTURAL (CONT.)

- AS 410 - DETAILS
- AS 411 - STAIR, HANDRAIL, AND GUARDRAIL DETAILS
- AS 412 - GUARDRAIL DETAILS
- AS 413 - ELEVATOR PLAN, SECTIONS, AND DETAILS
- AS 414 - DETAILS
- AS 501 - SIGNAGE PLANS AND SCHEDULE
- AS 502 - SIGNAGE PLANS
- AS 503 - SIGNAGE DETAILS
- AS 504 - SIGNAGE DETAILS
- AS 505 - SIGNAGE DETAILS
- AS 506 - SIGNAGE DETAILS
- AS 507 - SIGNAGE DETAILS

STRUCTURAL:

- SS 001 - GENERAL STRUCTURAL NOTES
- SS 100 - FOUNDATION PLAN
- SS 101 - GROUND LEVEL PLAN
- SS 102 - STORAGE ROOM
- SS 103 - TYPICAL LEVEL PLAN
- SS 104 - TOP LEVEL PLAN
- SS 110 - GROUND LEVEL SLAB REINFORCEMENT
- SS 111 - TYPICAL LEVEL SLAB REINFORCEMENT
- SS 112 - TOP LEVEL SLAB REINFORCEMENT
- SS 120 - GROUND LEVEL DRAINAGE PLAN
- SS 121 - TYPICAL LEVEL DRAINAGE PLAN
- SS 122 - TOP LEVEL DRAINAGE PLAN
- SS 200 - HYBRID MOMENT FRAME
- SS 300 - COLUMN PLAN DETAILS
- SS 310 - ENLARGED STAIR NO.1 / ELEVATOR PLAN
- SS 320 - ENLARGED STAIR NO. 2 PLANS
- SS 330 - STAIR AND ELEVATOR DETAILS
- SS 331 - STAIR AND ELEVATOR DETAILS
- SS 400 - FOUNDATION DETAILS
- SS 401 - FOUNDATION DETAILS
- SS 402 - FOUNDATION DETAILS
- SS 403 - FOUNDATION DETAILS
- SS 410 - PRECAST BEAM DETAILS
- SS 411 - PRECAST TEE DETAILS
- SS 420 - STRUCTURAL DETAILS
- SS 421 - STRUCTURAL DETAILS
- SS 500 - LAP SPICE SCHEDULES
- SS 501 - LAP SPICE SCHEDULES

MECHANICAL / PLUMBING:

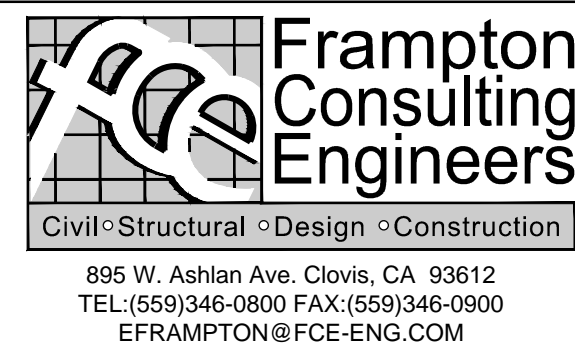
- MP 001 - MECHANICAL AND PLUMBING SYMBOLS AND LEGEND
- MP 101 - MECHANICAL AND PLUMBING GROUND LEVEL PLAN
- MP 201 - MECHANICAL AND PLUMBING SECOND LEVEL PLAN
- MP 301 - MECHANICAL AND PLUMBING THIRD LEVEL PLAN
- MP 401 - MECHANICAL AND PLUMBING TOP LEVEL PLAN
- MP 501 - MECHANICAL AND PLUMBING ENLARGED STAIRS, MACHINE ROOM AND ROOF PLANS
- MP 601 - MECHANICAL AND PLUMBING DETAILS
- MP 701 - MECHANICAL AND PLUMBING SCHEDULES

ELECTRICAL:

- E 001 - ELECTRICAL SYMBOLS AND LEGEND
- E 101 - SITE ELECTRICAL DEMOLITION PLAN
- E 102 - SITE ELECTRICAL PLAN
- E 211 - GROUND LEVEL FLOOR LIGHTING PLAN
- E 212 - GROUND LEVEL FLOOR ELECTRICAL PLAN
- E 221 - SECOND LEVEL FLOOR LIGHTING PLAN
- E 222 - SECOND LEVEL FLOOR ELECTRICAL PLAN
- E 231 - THIRD LEVEL FLOOR LIGHTING PLAN
- E 232 - THIRD LEVEL FLOOR ELECTRICAL PLAN
- E 241 - TOP LEVEL FLOOR LIGHTING PLAN
- E 242 - TOP LEVEL FLOOR ELECTRICAL PLAN
- E 501 - ELECTRICAL DETAILS
- E 601 - PANEL SCHEDULES AND LINE DIAGRAM
- E 602 - FIRE ALARM RISER DIAGRAM AND DETAILS

CONSULTANTS:

ARCHITECT/ENGINEERS:



GENERAL INFORMATION

TEAM DIRECTORY

OWNER

VA NORTHERN CALIFORNIA HEALTH CARE SYSTEM
10535 HOSPITAL WAY
MATHER, CA 95655
(800) 382-8387
CONTACT: KYLE HATCH, P.E.
STEVE HAMILTON, P.E.

ARCHITECT

FCE, INC. (SDVOSB)
895 WEST ASHLAN AVENUE, SUITE 102
CLOVIS, CA 93612
(559) 346-0800
CONTACT: RICK GOMEZ

PROJECT MANAGER

FCE, INC. (SDVOSB)
895 WEST ASHLAN AVENUE, SUITE 102
CLOVIS, CA 93612
(559) 346-0800
CONTACT: ERIC C. FRAMPTON, P.E.

CIVIL ENGINEER

FCE, INC. (SDVOSB)
895 WEST ASHLAN AVENUE, SUITE 102
CLOVIS, CA 93612
(559) 346-0800
CONTACT: ERIC C. FRAMPTON, P.E.

STRUCTURAL ENGINEER

FCE, INC. (SDVOSB)
895 WEST ASHLAN AVENUE, SUITE 102
CLOVIS, CA 93612
(559) 346-0800
CONTACT: ERIC C. FRAMPTON, P.E.

MECHANICAL ENGINEER

FCE, INC. (SDVOSB)
895 WEST ASHLAN AVENUE, SUITE 102
CLOVIS, CA 93612
(559) 346-0800
CONTACT: GAREN M. LENCIONI, P.E.

ELECTRICAL ENGINEER

FCE, INC. (SDVOSB)
895 WEST ASHLAN AVENUE, SUITE 102
CLOVIS, CA 93612
(559) 346-0800
CONTACT: PETER KWAN, P.E.

GOVERNING CODES:

1. INTERNATIONAL BUILDING CODE, IBC 2006 EDITION
2. INTERNATIONAL PLUMBING CODE, IPC 2006 EDITION
3. INTERNATIONAL MECHANICAL CODE, IMC 2006 EDITION
4. INTERNATIONAL FIRE CODE, IFC 2006 EDITION
5. NATIONAL ELECTRICAL CODE, NEC 2008 EDITION
6. STATE OF CALIFORNIA ENERGY CONSERVATION REGULATIONS, TITLE 24
7. NATIONAL FIRE PROTECTION ASSOCIATION (NFPA 101)
8. OCCUPATIONAL SAFETY AND HEALTH ACT (OSHA)

SCOPE OF WORK:

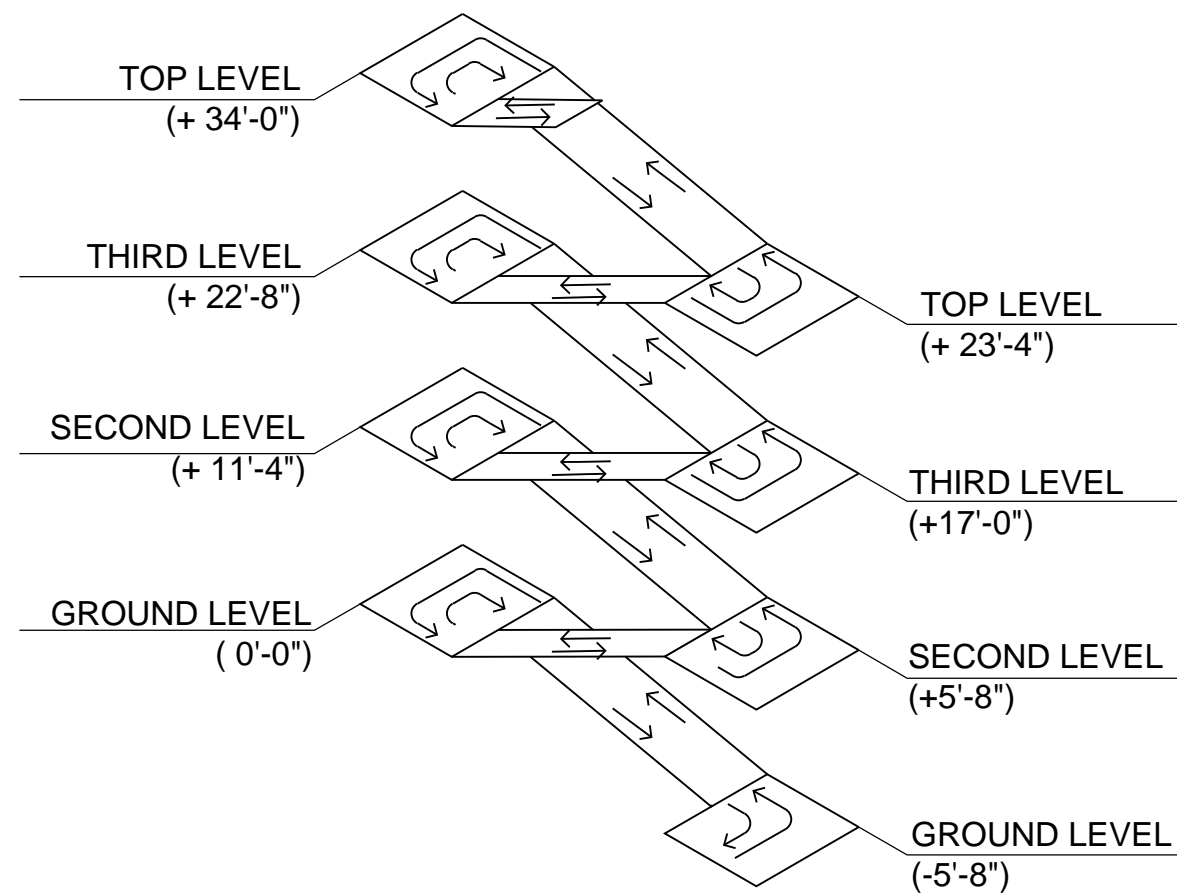
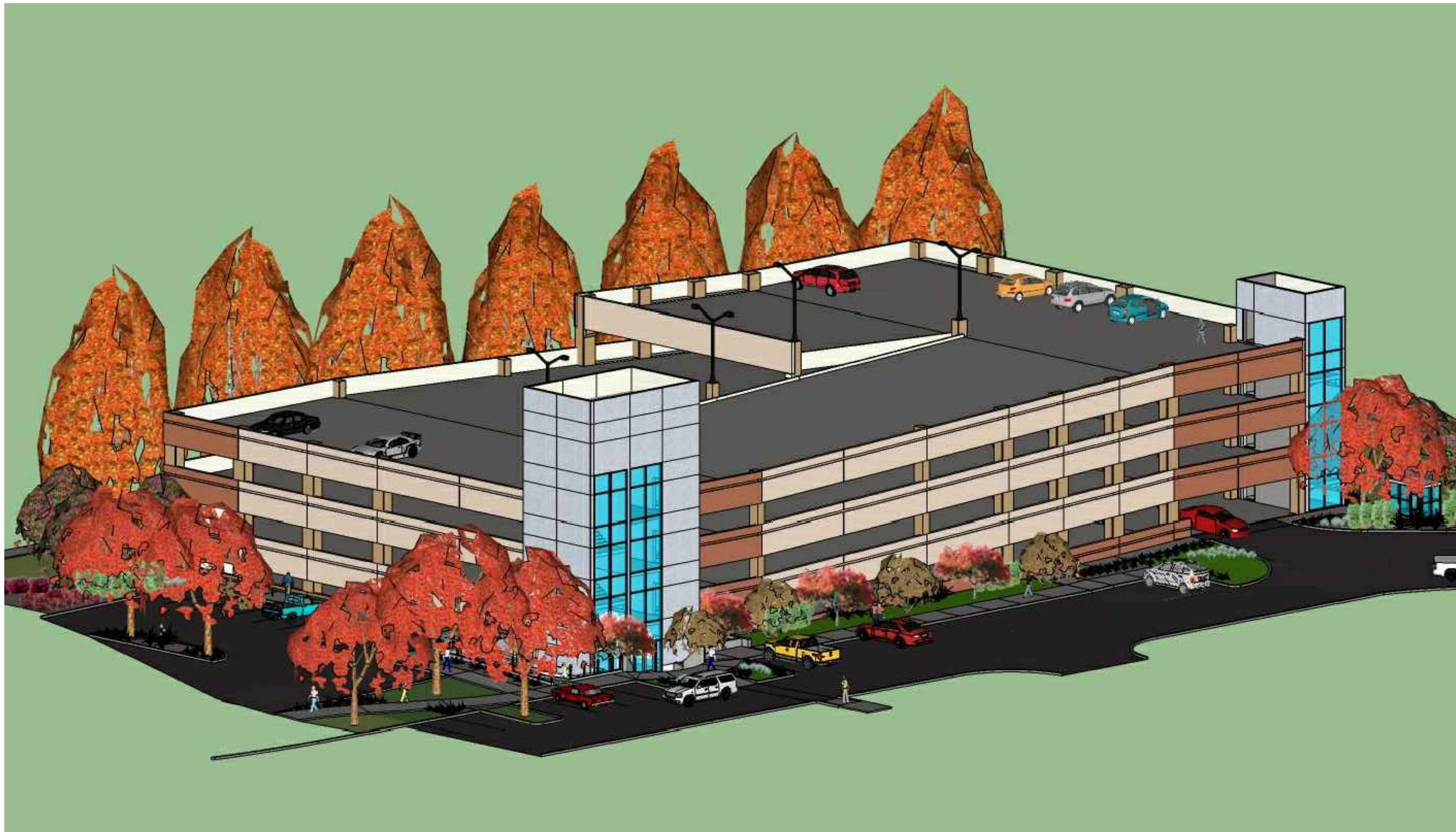
PROVIDE NEW PARKING STRUCTURE, CONCRETE SIDEWALK, ADDITIONAL PARKING, AND LANDSCAPING

PRECAST MANUFACTURER NOTES:

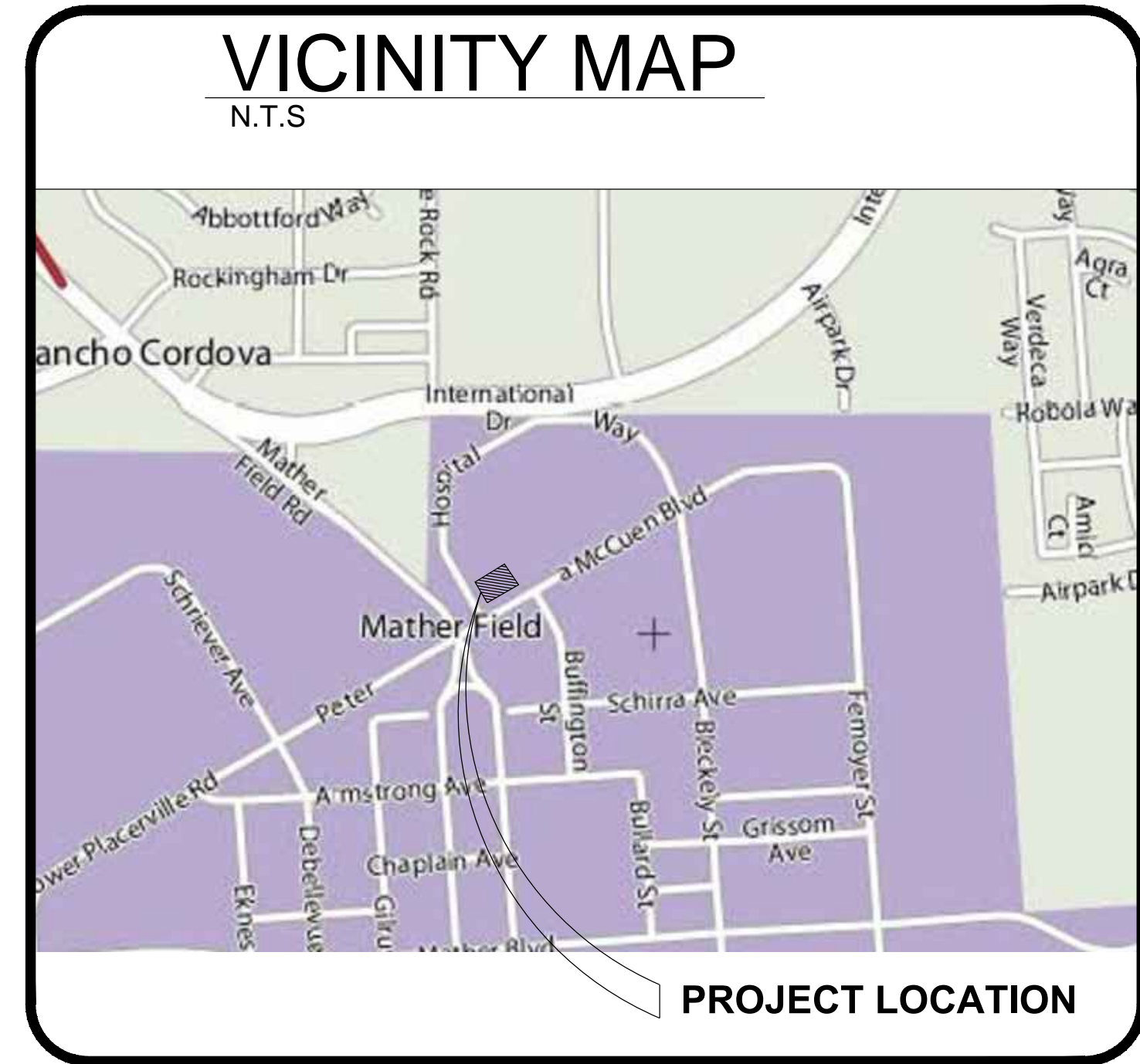
1. PRECAST MANUFACTURER IS RESPONSIBLE FOR DESIGNS OF ALL PRECAST ELEMENTS, PRECAST CONNECTIONS, AND SEISMIC DESIGN.
2. PRECAST MANUFACTURER TO DESIGN FOR FUTURE LEVELS AS REQUIRED.

ELEVATOR MANUFACTURER NOTES:

1. ELEVATOR MANUFACTURER IS TO COORDINATE WITH P/C MANUFACTURER FOR ALL CONDUIT LOCATIONS, CONDUITS SHALL RUN UNDER SLAB TO ELEVATOR HOISTWAYS.



PARKING NET TOTALS		
NO. OF SPACES ADDED	NO. OF SPACES REMOVED ON GROUND FLOOR	-121
	GROUND FLOOR (SITE IMPROVEMENTS)	27
	GROUND FLOOR	77
	SECOND FLOOR	78
	THIRD FLOOR	78
	FOURTH FLOOR	69
	NET TOTAL	208
TWO FUTURE LEVELS		156



CONSTRUCTION DOCUMENTS - FINAL SUBMISSION

Drawing Title Coversheet, Sheet Index, Vicinity Map, Team Directory, General Information, Codes, and Scope of Work.		Project Title VA Northern California Health Care System Parking Structure		Project Number 612-CSI-102		Office of Construction and Facilities Management Department of Veterans Affairs	
Approved: Project Director		Location 10535 Hospital Way, Mather CA 95655		Building Number -----			
Date 06/15/2011	Checked ECF	Drawn AF	Drawing Number GI 100		Dwg. 1 of 122		