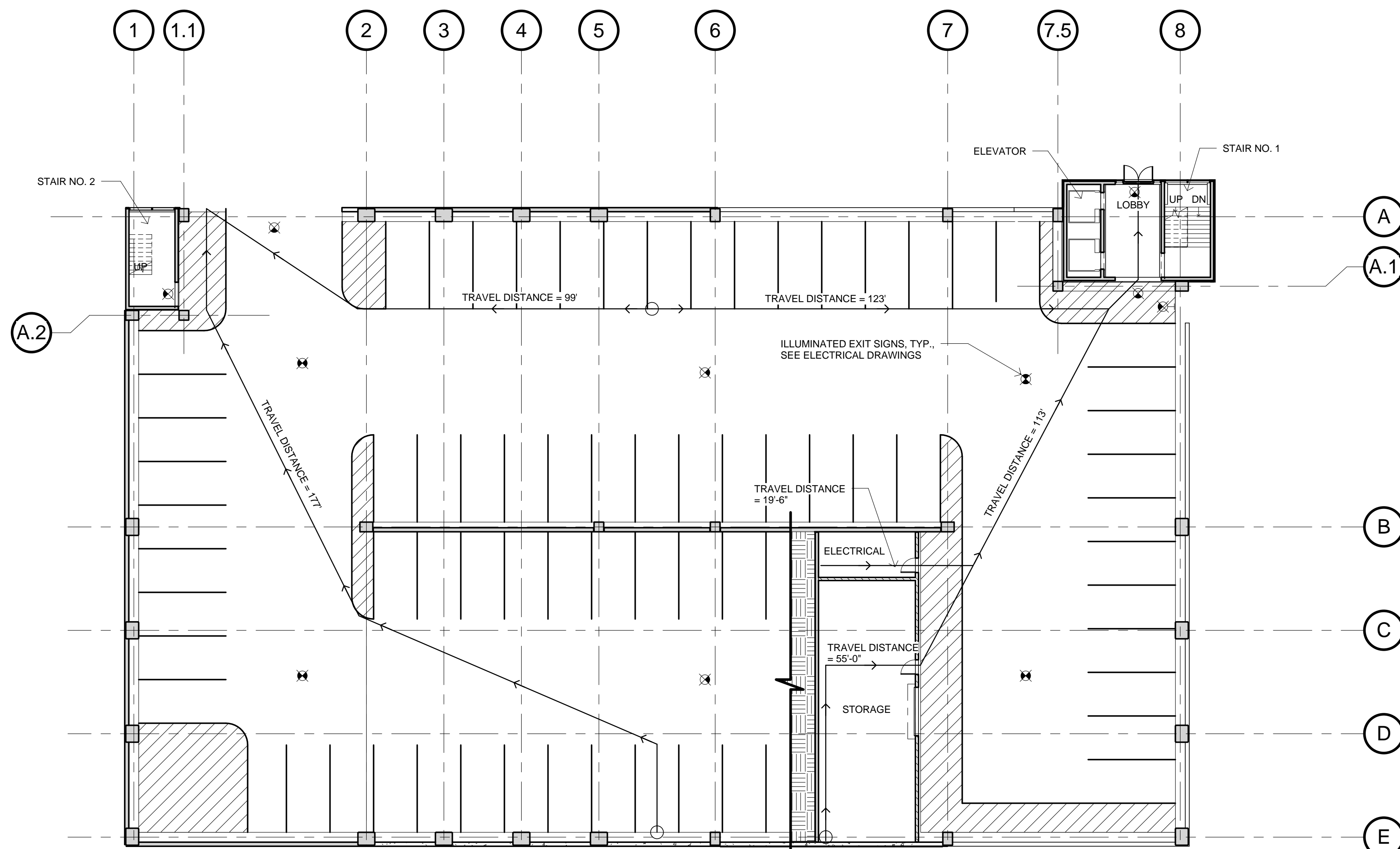
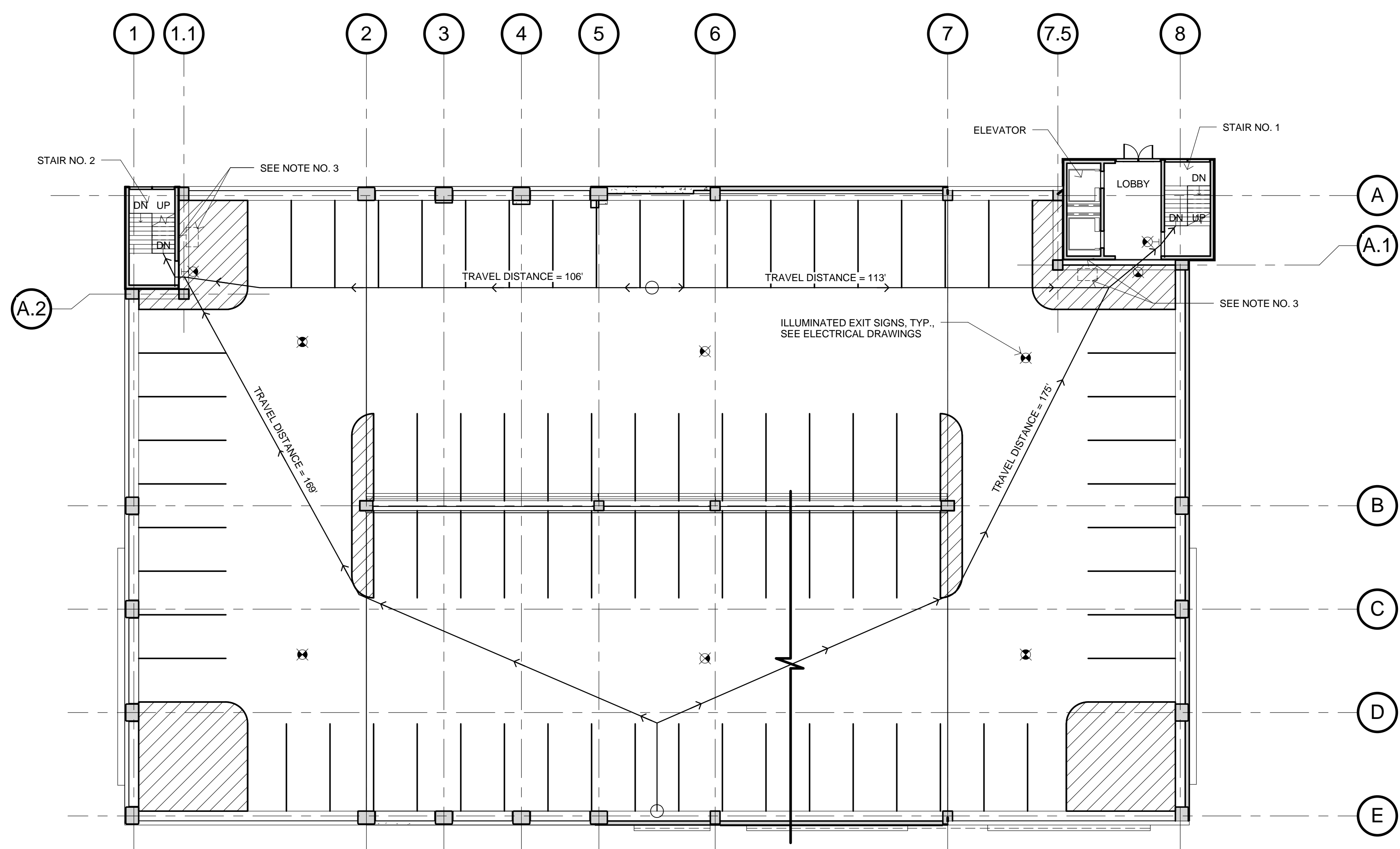


three inches = one foot
one and one half inches = one foot
one inch = one foot
three quarters inch = one foot
one half inch = one foot
three eighths inch = one foot
one quarter inch = one foot
one eighth inch = one foot



NORTH
1/16" = 1'-0"
FIRE-LIFE SAFETY PLAN AT GROUND LEVEL



NORTH
1/16" = 1'-0"
FIRE-LIFE SAFETY PLAN AT SECOND LEVEL

CODE ANALYSIS SUMMARY

BUILDING CODE: 2006 INTERNATIONAL BUILDING CODE AND DEPARTMENT OF VETERANS AFFAIRS STANDARDS	
1. BUILDING TYPE: OCCUPANCY: S-2, OPEN PARKING STRUCTURE	
2. CONSTRUCTION TYPE: IIB PER TABLE 406.3.5	
3. MAXIMUM HEIGHT PER TABLE 406.3.5: 8 TIERS PERMITTED / 4 TIERS PROVIDED	
4. MAXIMUM FLOOR AREA PER TABLE 406.3.5: 50,000 S.F. PERMITTED / 29,158 PROVIDED	
GROUND LEVEL: OPEN PARKING STRUCTURE = 29,158 S.F.	
SECOND LEVEL: OPEN PARKING STRUCTURE = 29,158 S.F.	
THIRD LEVEL: OPEN PARKING STRUCTURE = 29,158 S.F.	
TOP LEVEL: OPEN PARKING STRUCTURE = 24,600 S.F.	
STORAGE (S-2): 1,080 S.F.	
ELECTRICAL: 188 S.F.	
MACHINE ROOM: 374 S.F.	
TOTAL BUILDING AREA: 113,718 S.F.	
B. OPENNESS: OPENINGS IN EXTERIOR WALL OF OPEN PARKING STRUCTURES PER SECTION 406.3.1	
GROUND LEVEL: PERCENT OF PERIMETER AREA PERIMETER = 6,733 S.F. OPENINGS = 2,273 S.F. REDUCTION OF OPENING WITH WIRE MESH = 92 S.F. THEREFORE, 2,273 S.F. - 92 S.F. = 2,181 S.F. PERCENT OF OPENINGS = 2,181 S.F. / 6,733 S.F. = 32%	
PERCENT OF PERIMETER LENGTH: PERIMETER = 724 L.F. OPENINGS = 551 L.F. PERCENT OF LENGTH OPEN = 551 L.F. / 724 L.F. = 76%	
SECOND AND THIRD LEVEL: PERCENT OF PERIMETER AREA PERIMETER = 6,733 S.F. OPENINGS = 2,433 S.F. PERCENT OF OPENINGS = 2,433 S.F. / 6,733 S.F. = 36%	
PERCENT OF PERIMETER LENGTH: PERIMETER = 724 L.F. OPENINGS = 551 L.F. PERCENT OF LENGTH OPEN = 551 L.F. / 724 L.F. = 76%	
TOP LEVEL: PERCENT OF PERIMETER AREA: 100% OPEN PROVIDED	
C. MEANS OF EGRESS: 1. OCCUPANT LOAD PER TABLE 1004.1.1:	
GROUND LEVEL: OPEN PARKING STRUCTURE: 200 S.F. / OCCUPANT 30,428 S.F. = 152 OCCUPANTS	
SECOND AND THIRD LEVEL: OPEN PARKING STRUCTURE: 200 S.F. / OCCUPANT 29,158 S.F. = 146 OCCUPANTS	
TOP LEVEL: OPEN PARKING STRUCTURE: 200 S.F. / OCCUPANT 24,600 S.F. = 123 OCCUPANTS	
2. EGRESS WIDTH PER OCCUPANT PER TABLE 1005.1 (WITHOUT SPRINKLER SYSTEM)	
GROUND LEVEL: OPEN PARKING STRUCTURE (USE GROUP S): AT STAIRWAYS: 0.3 INCHES PER PERSON x 152 OCCUPANTS = 46 INCHES REQUIRED / 54 INCHES PROVIDED AT DOORS: 0.2 INCHES PER PERSON x 152 OCCUPANTS = 30 INCHES REQUIRED / 60 INCHES PROVIDED	
SECOND AND THIRD LEVEL: OPEN PARKING STRUCTURE (USE GROUP S): AT STAIRWAYS: 0.3 INCHES PER PERSON x 146 OCCUPANTS = 44 INCHES REQUIRED / 54 INCHES PROVIDED AT DOORS: 0.2 INCHES PER PERSON x 146 OCCUPANTS = 29 INCHES REQUIRED / 60 INCHES PROVIDED	
TOP LEVEL: OPEN PARKING STRUCTURE (USE GROUP S): AT STAIRWAYS: 0.3 INCHES PER PERSON x 123 OCCUPANTS = 37 INCHES REQUIRED / 54 INCHES PROVIDED AT DOORS: 0.2 INCHES PER PERSON x 123 OCCUPANTS = 25 INCHES REQUIRED / 60 INCHES PROVIDED	
3. MINIMUM NUMBER OF EXITS PER SECTION 1019:	
GROUND LEVEL: OPEN PARKING STRUCTURE (USE GROUP S): 2 EXITS REQUIRED (PER TABLE 1019.1 / 2 EXITS PROVIDED)	
SECOND AND THIRD LEVEL: OPEN PARKING STRUCTURE (USE GROUP S): 2 EXITS REQUIRED (PER TABLE 1019.1 / 2 EXITS PROVIDED)	
TOP LEVEL: OPEN PARKING STRUCTURE (USE GROUP S): 2 EXITS REQUIRED (PER TABLE 1019.1 / 2 EXITS PROVIDED)	
4. LENGTH OF EXIT ACCESS TRAVEL (WITHOUT SPRINKLER SYSTEM) PER TABLE 1016.1	
GROUND LEVEL: OPEN PARKING STRUCTURE (USE GROUP S): 300 FEET MAXIMUM / 177 FEET MAXIMUM PROVIDED	
SECOND AND THIRD LEVEL: OPEN PARKING STRUCTURE (USE GROUP S): 300 FEET MAXIMUM / 175 FEET MAXIMUM PROVIDED	
TOP LEVEL: OPEN PARKING STRUCTURE (USE GROUP S): 300 FEET MAXIMUM / 175 FEET MAXIMUM PROVIDED	
D. FIRE RESISTIVE REQUIREMENTS:	
1. STRUCTURAL REQUIREMENTS FOR TYPE IIB CONSTRUCTION: SEE SHEET SS 001	
2. FIRE SEPARATION DISTANCE FOR USE GROUP S-2 PER TABLE 602: GREATER THAN 10 FEET BUT LESS THAN 30 FEET = 0 HOUR REQUIRED	
3. FIRE SEPARATION AT ELEVATOR HOISTWAY: 2 HOURS	
E. FIRE PROTECTION SYSTEM:	
1. AUTOMATIC FIRE SPRINKLER SYSTEMS: OPEN PARKING STRUCTURE: NOT REQUIRED PER SECTION 903.2.9	
2. STANDPIPE SYSTEM: CLASS I MANUAL STANDPIPE REQUIRED PER SECTION 905.1 (INSTALLED PER NFPA 14)	
3. FIRE EXTINGUISHERS: REQUIRED PER SECTION 906.1 PER CFC 2007	

- NOTES:
- THE CLEAR HEIGHT OF EACH FLOOR LEVEL IN VEHICAL AND PEDESTRIAN TRAFFIC AREAS SHALL NOT BE LESS THAN 7 FEET PER IBC 406.2.2.
 - ELEVATOR HOISTWAY 8" PRECAST CONCRETE WALLS TO BE 2-HOUR FIRE RESISTANT. SEE TABLE 720.1(2).
 - AREA FOR ASSISTED RESCUE TO BE 30' x 48'. PROVIDE AND INSTALL SIGN ON WALL AT +72 INCHES A.F.F. TO CENTER OF SIGN USING MECHANICAL FASTENERS. SIGN TO READ "AREA OF ASSISTED RESCUE" AND SHALL INCLUDE THE INTERNATIONAL SYMBOL OF ACCESSIBILITY.

CONSTRUCTION DOCUMENTS - FINAL SUBMISSION

CONSULTANTS:		ARCHITECT/ENGINEERS:		Drawing Title Fire - Life Safety Plans and Analysis		Project Title: VA Northern California Health Care System Parking Structure		Project Number: 612 - CSI - 102		Office of Construction and Facilities Management			
				Approved: Project Director		Location: 10535 Hospital Way, Mather, CA 95655		Building Number: N/A					
Revisions:		Date				Date: 06/15/2011		Checked: ECF		Drawn: RAT			
								Drawing Number: GI 300		Dwg. 4 of 122			