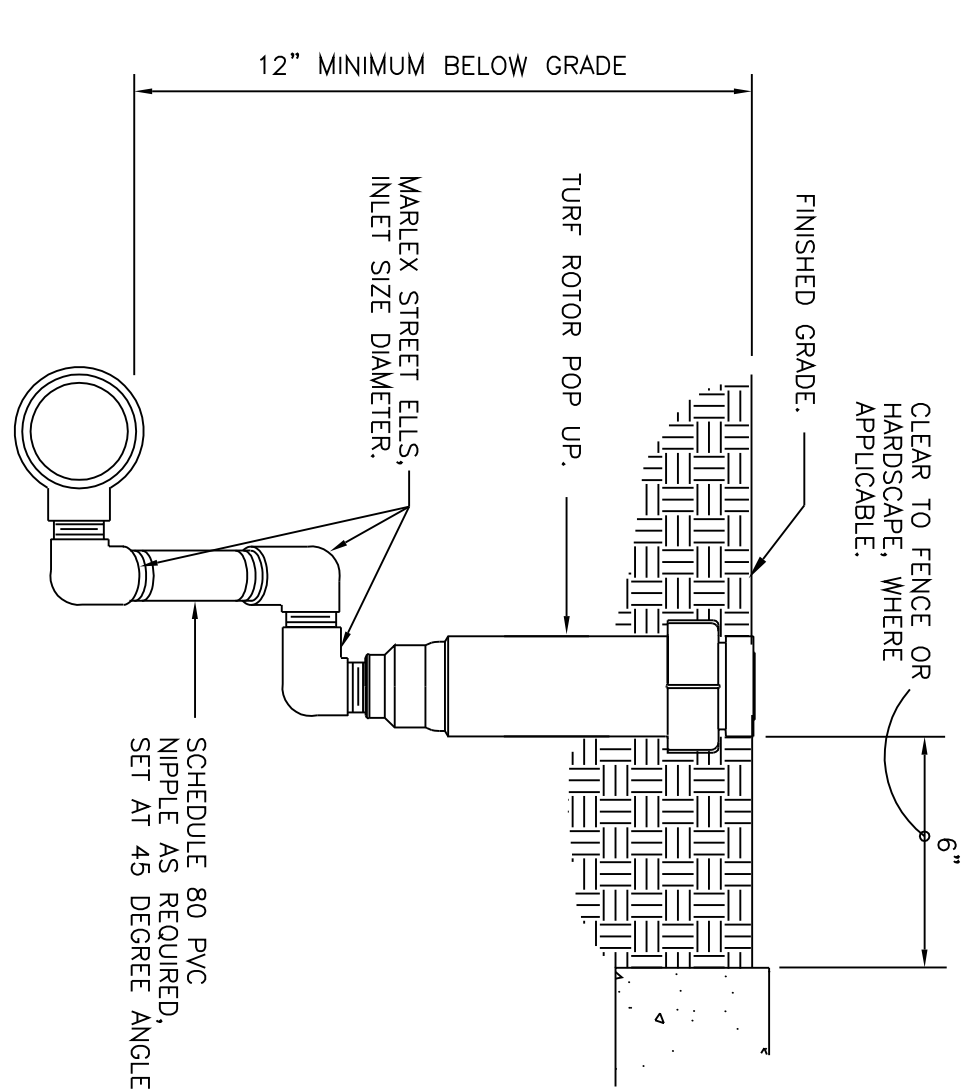


- NOTES:
1. SLEEVE BELOW ALL HARDSCAPE ELEMENTS WITH CLASS 200 PVC TWICE THE DIAMETER OF THE PIPE OR WIRE BUNDLE WITHIN. MIN SLEEVE SIZE IS 2\"/>
 2. INSTALL JOINTS AND CONNECTIONS IN ACCORDANCE WITH MANUFACTURER'S INSTRUCTIONS.
 3. SEE MANUFACTURER'S INSTALLATION INSTRUCTIONS.

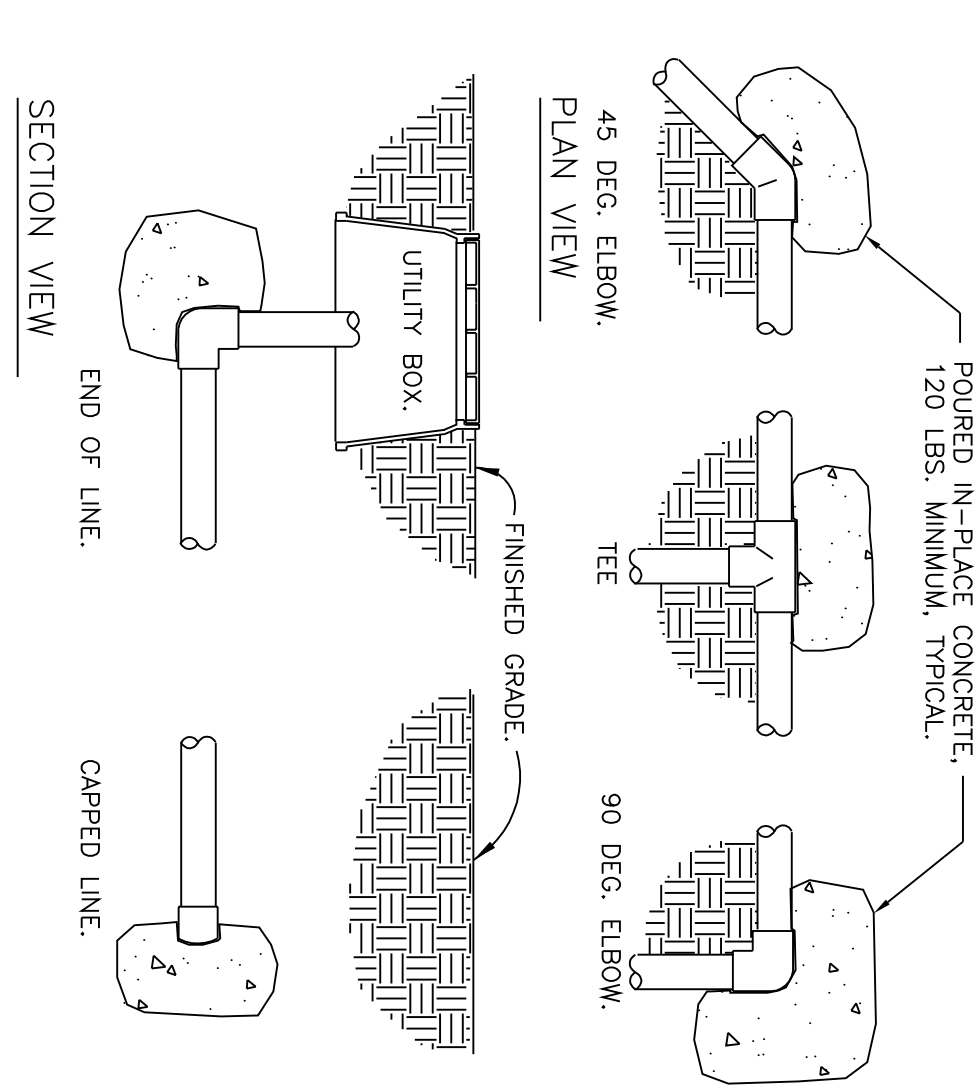
14 TRENCHING

N.T.S.



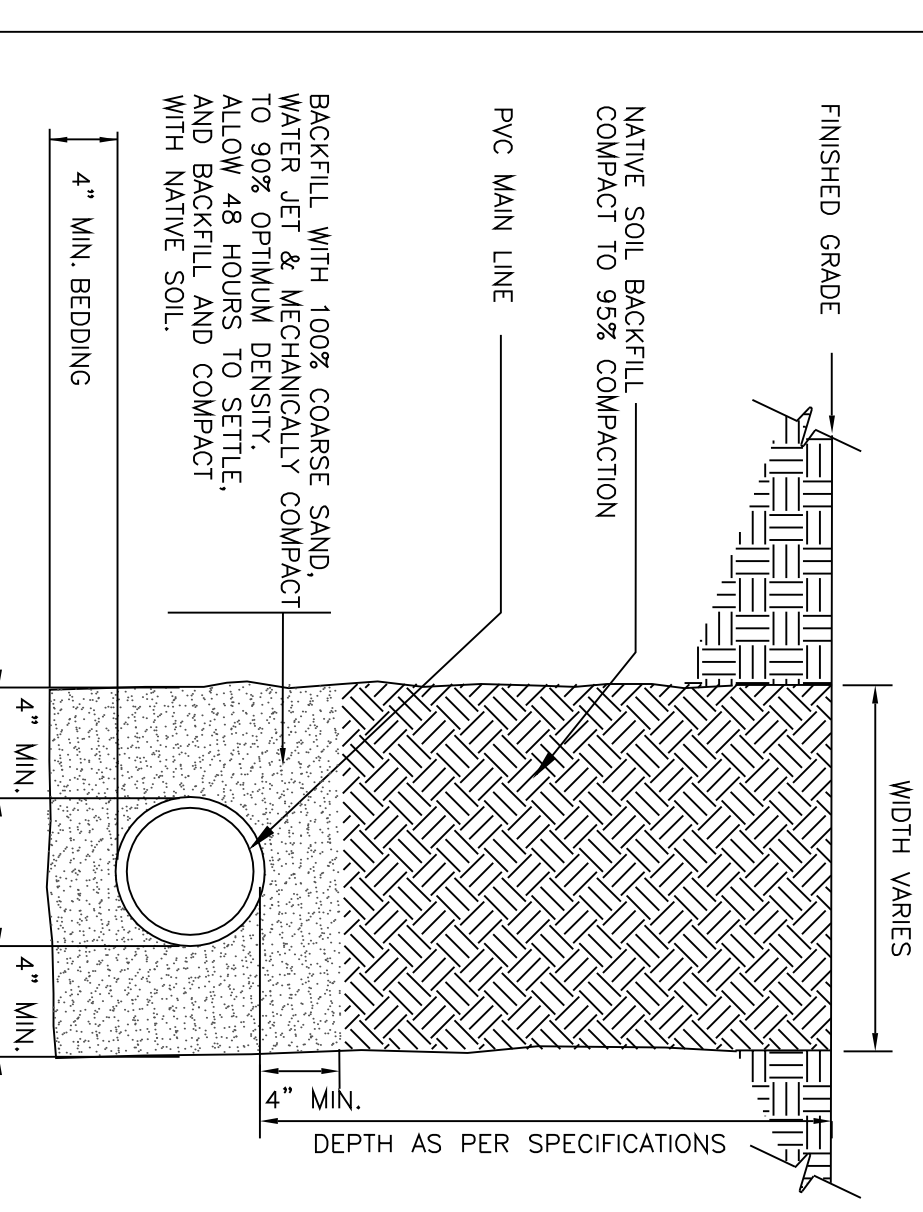
10 TURN ROTOR MARLEX ASSEMBLY

N.T.S.



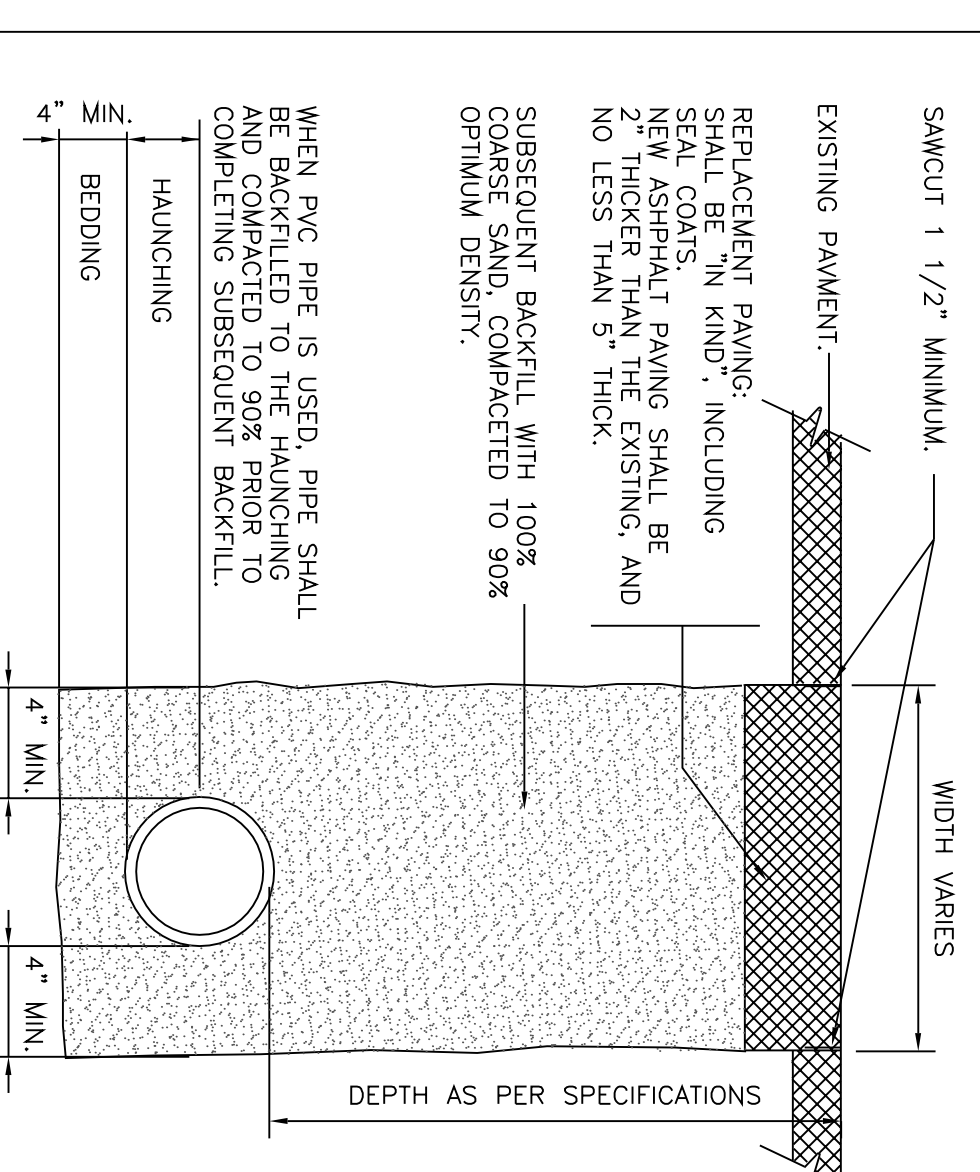
11 THRUST BLOCKING

N.T.S.



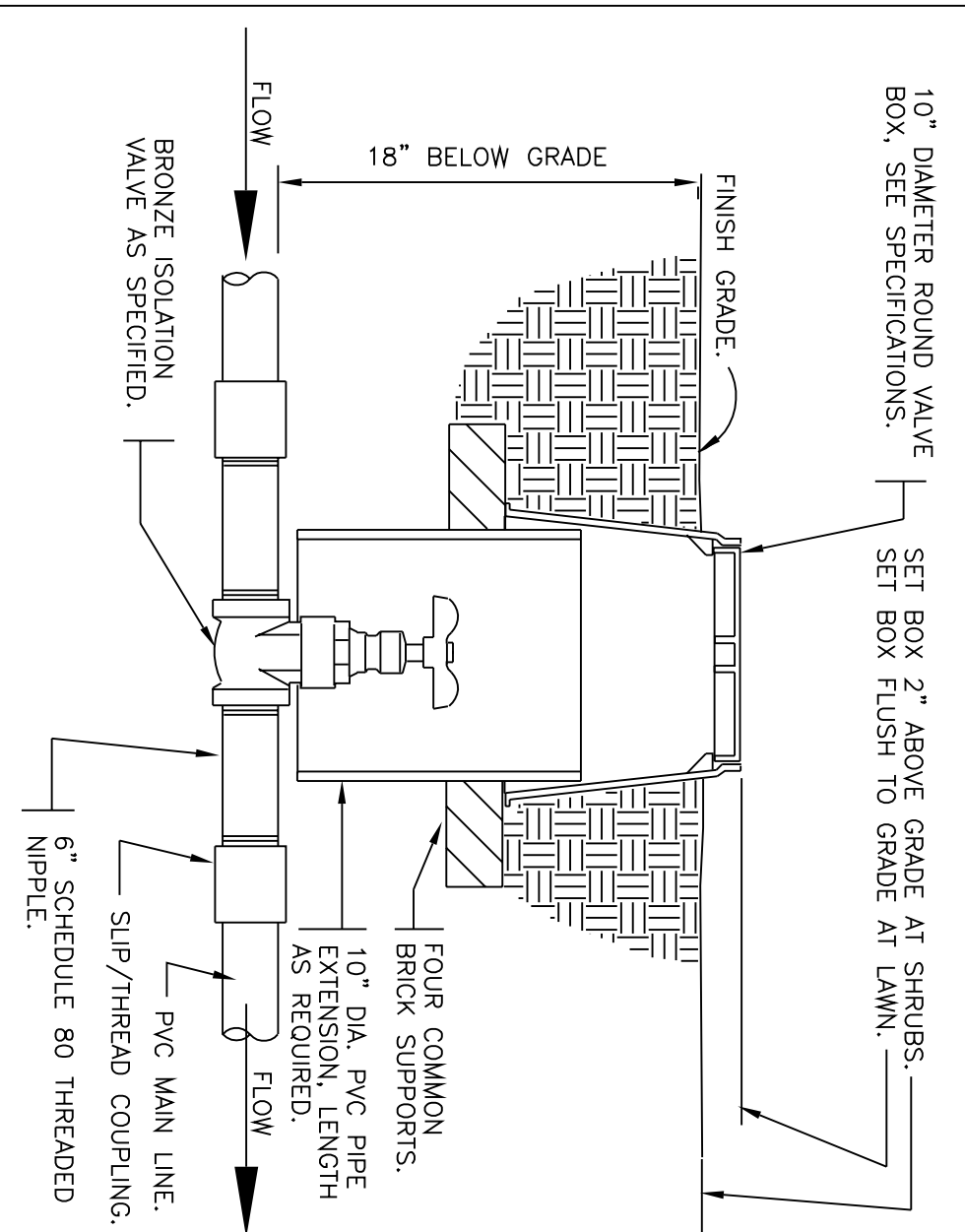
12 SLEEVE AT ROAD

N.T.S.



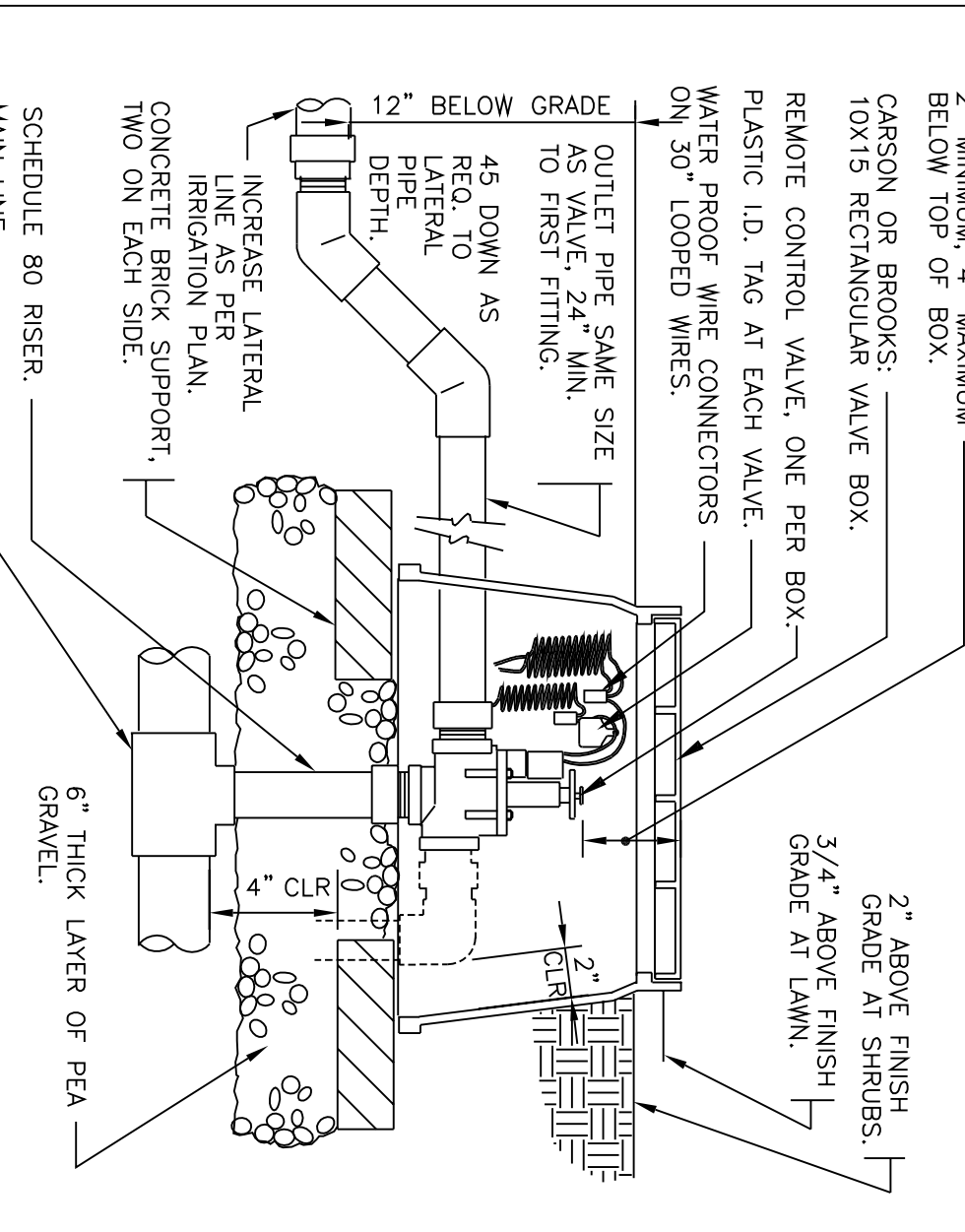
13 TRENCH DETAIL AT ASPHALT PAVING

N.T.S.

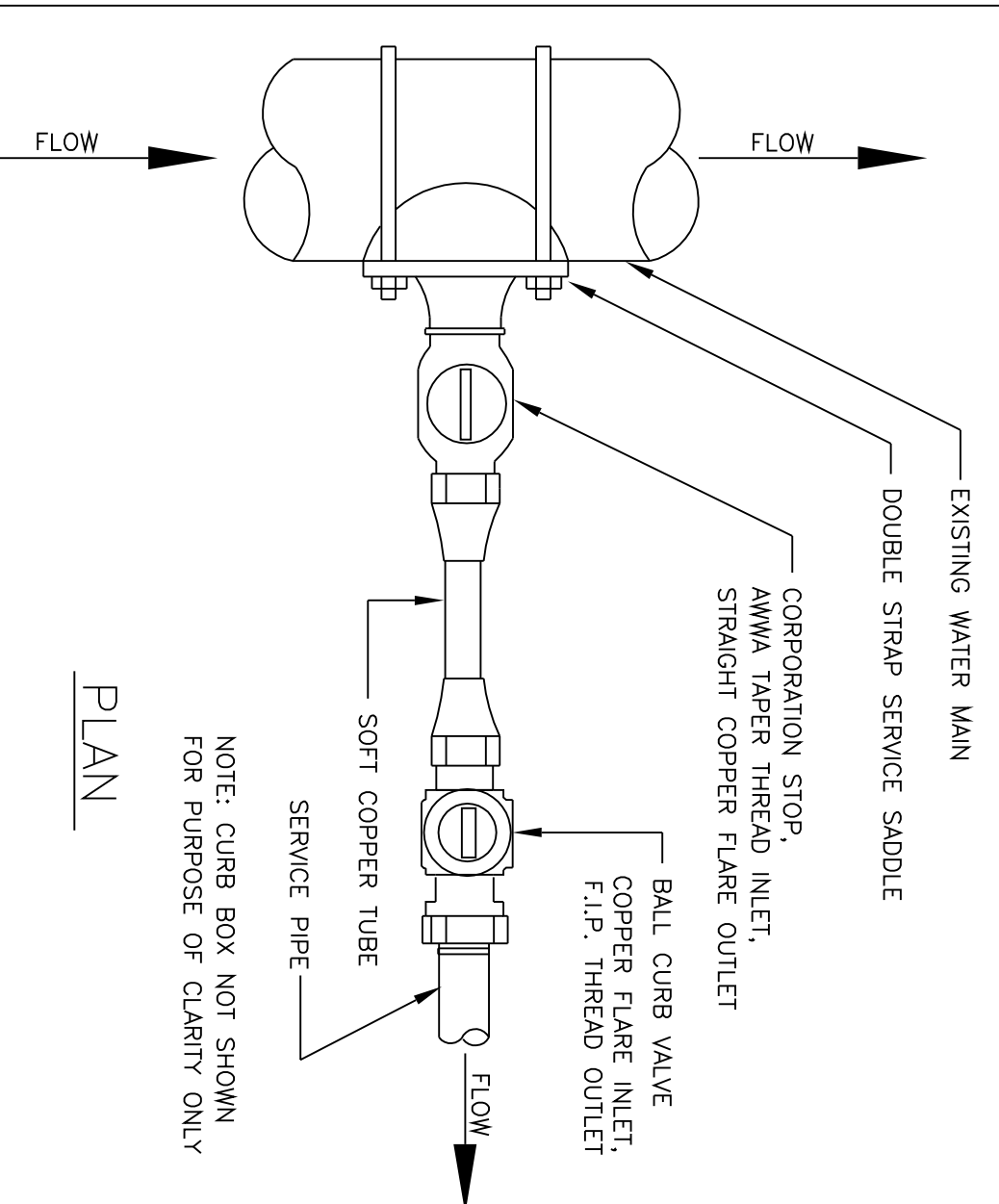


7 GATE VALVE

N.T.S.

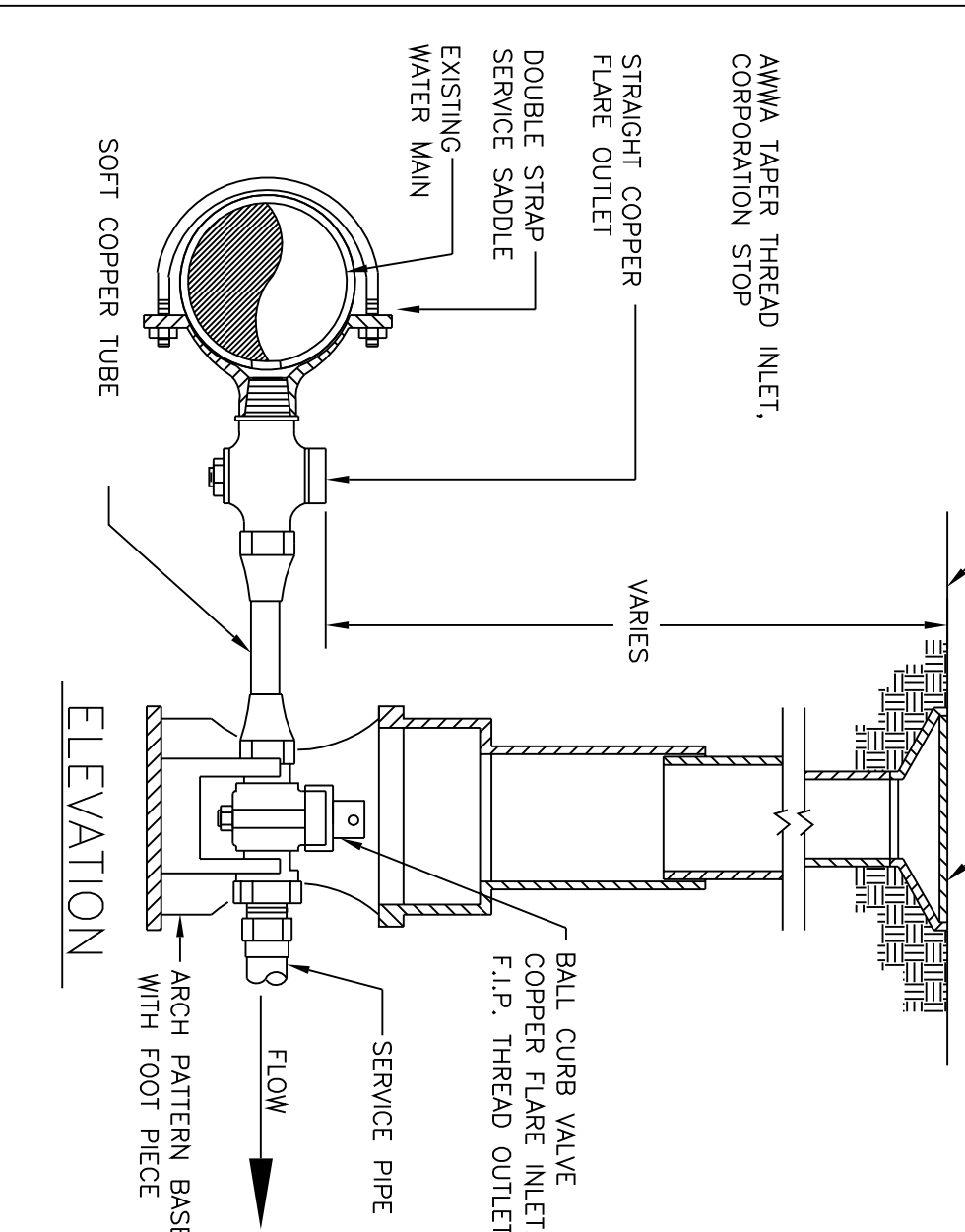


8 2\"/>



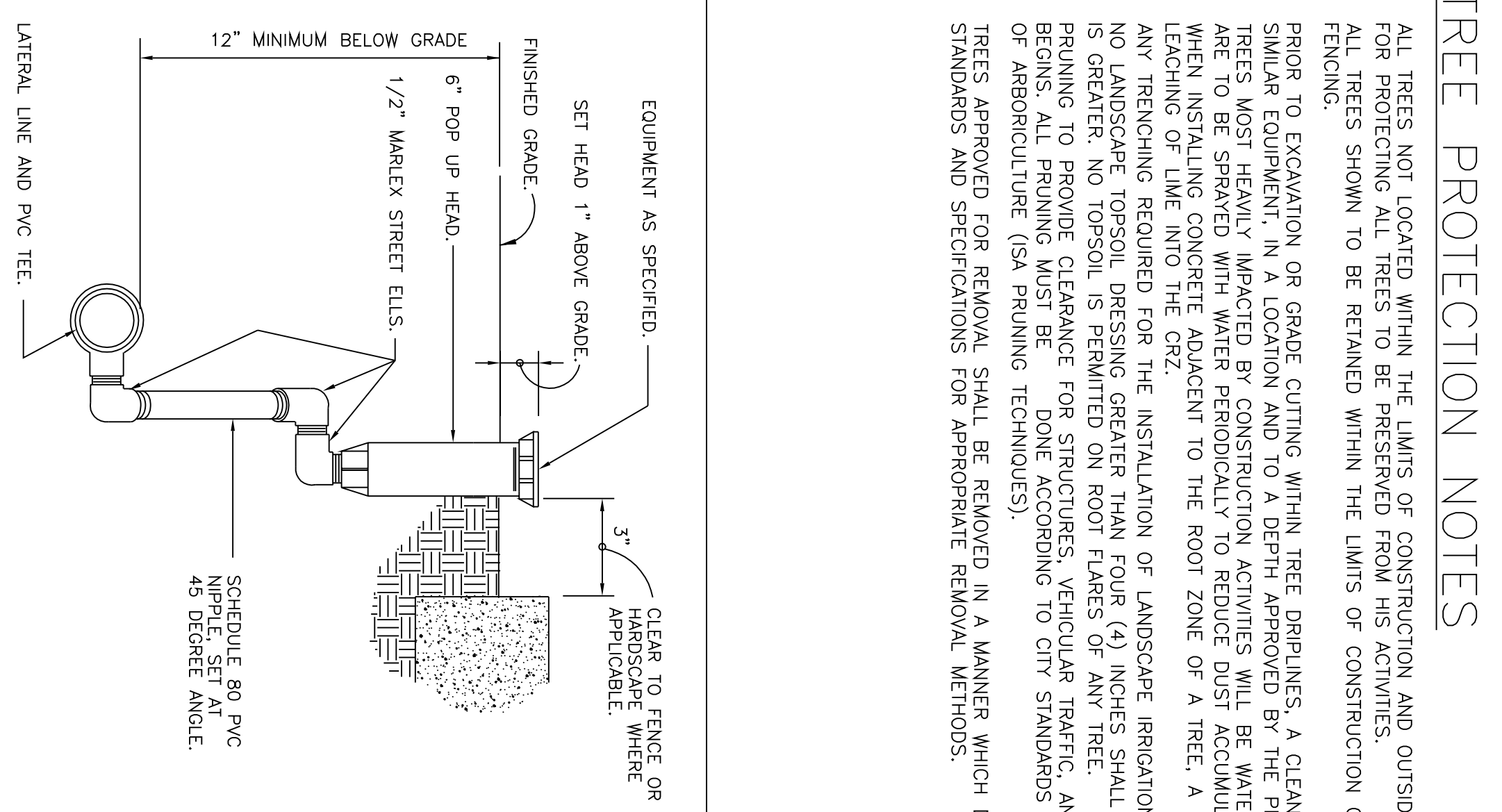
9 WATER MAIN CONNECTION

N.T.S.

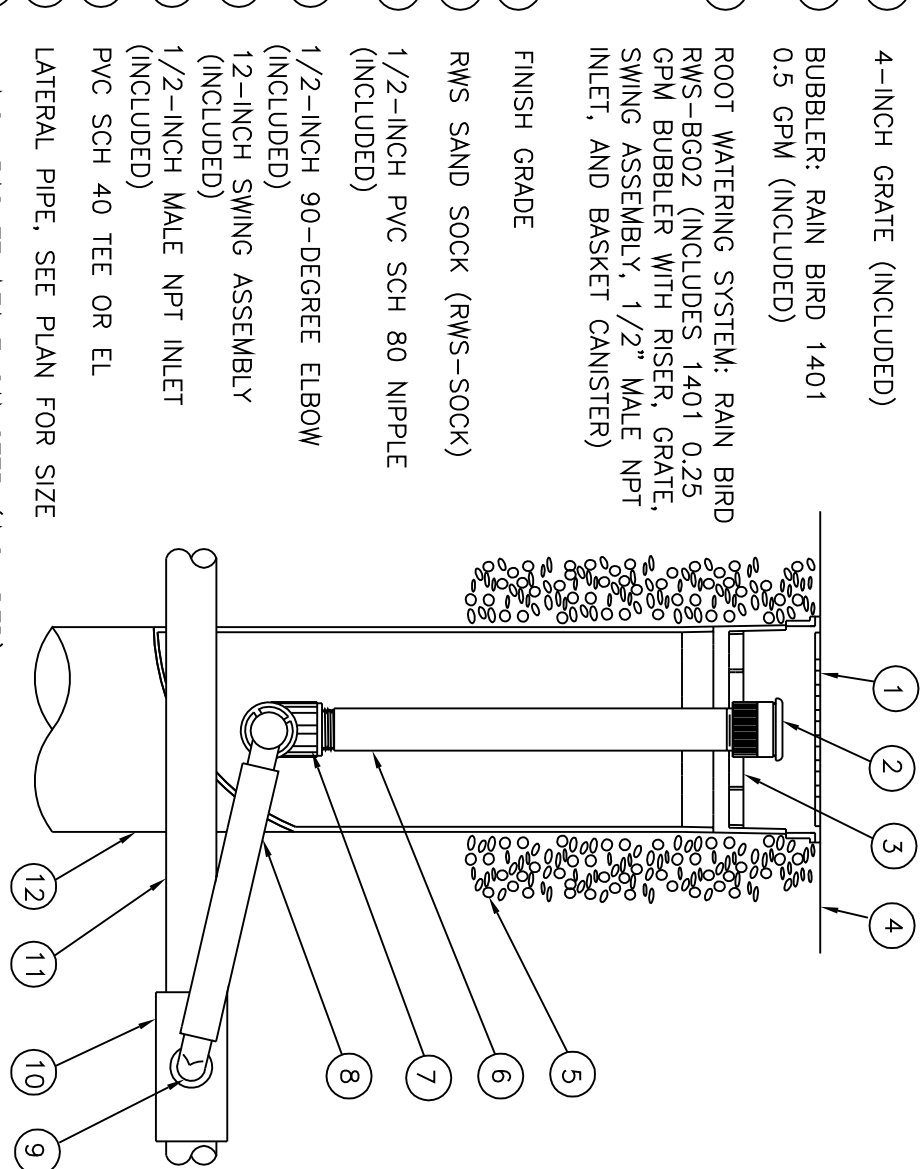


10 WATER MAIN CONNECTION

N.T.S.

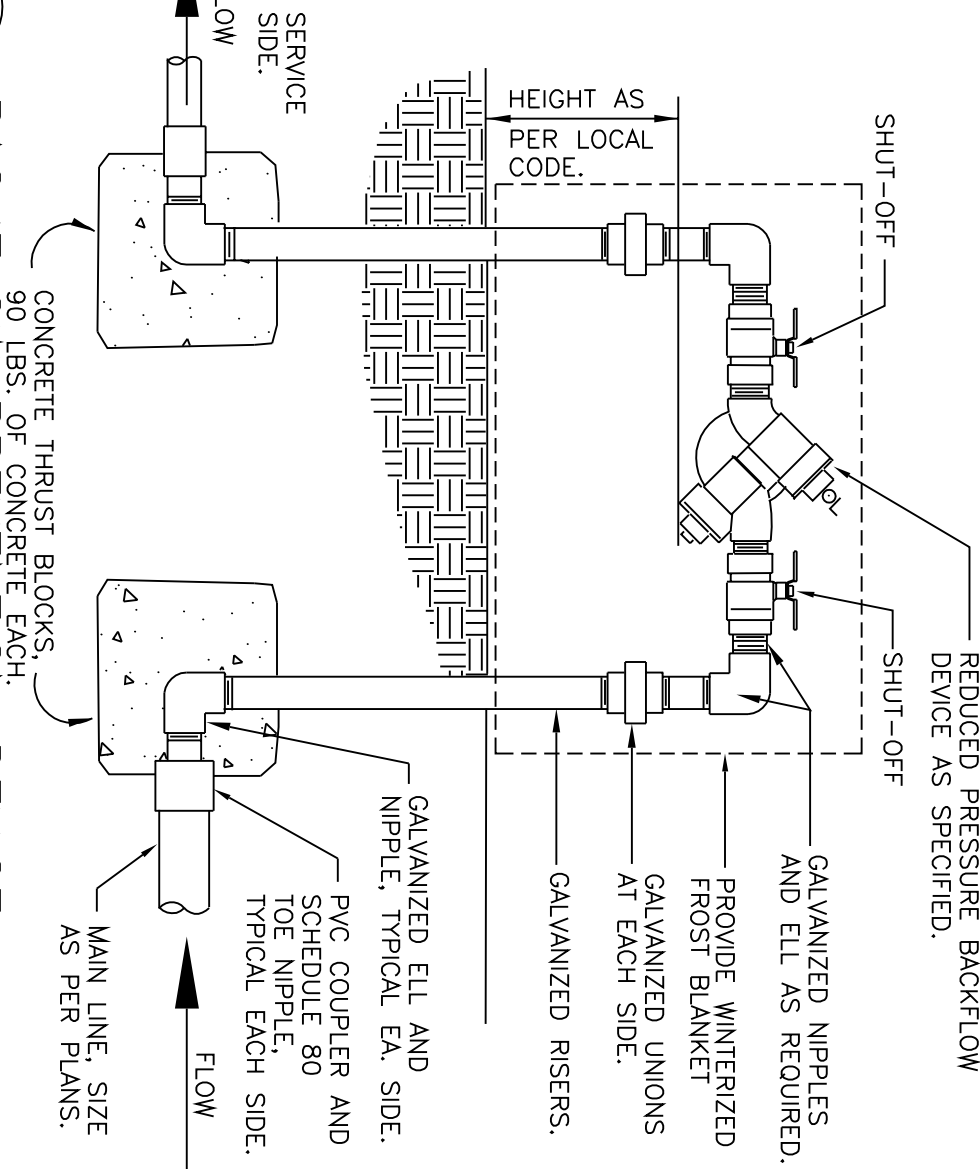


4 6\"/>



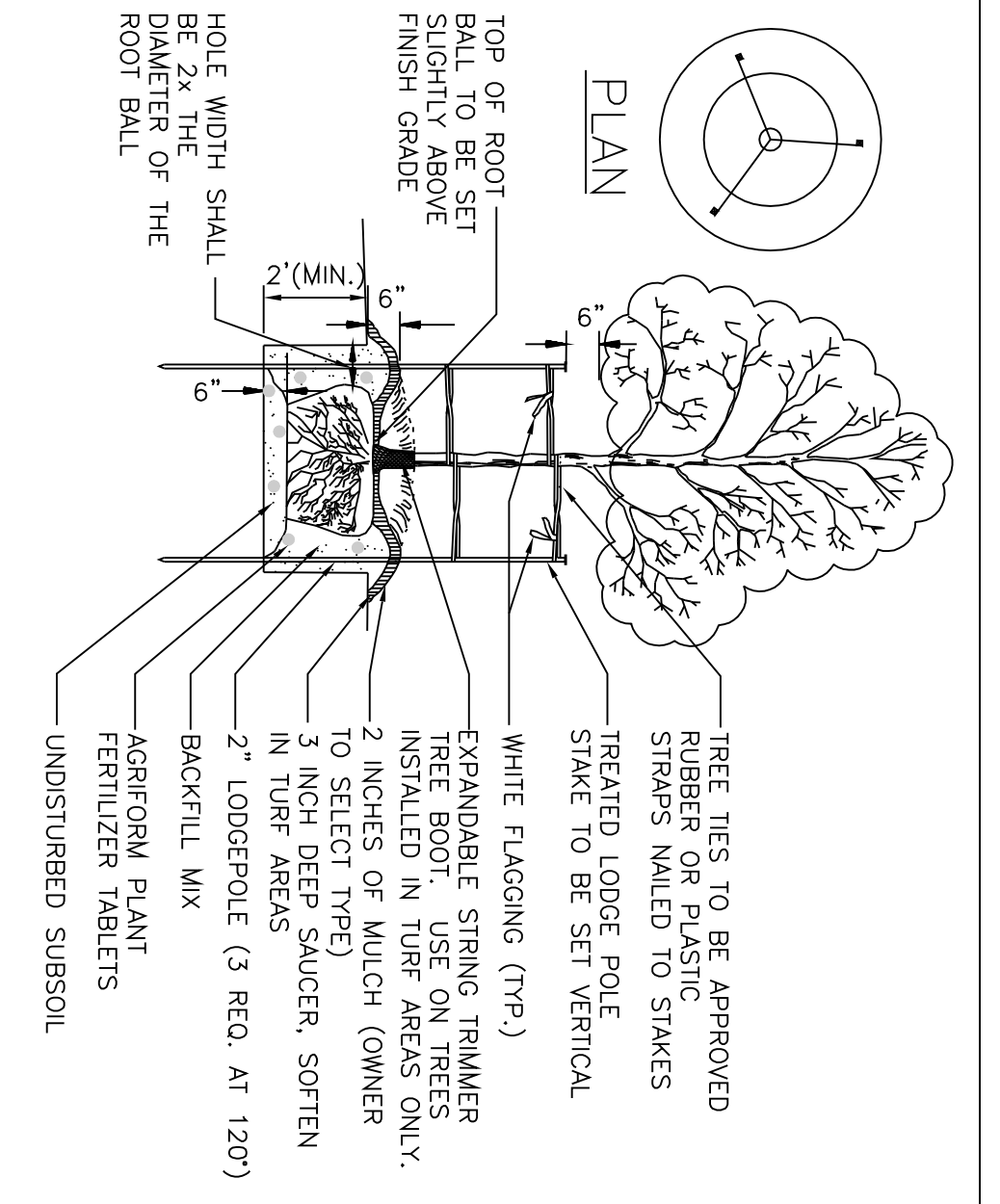
2 SHRUB PLANTING

N.T.S.



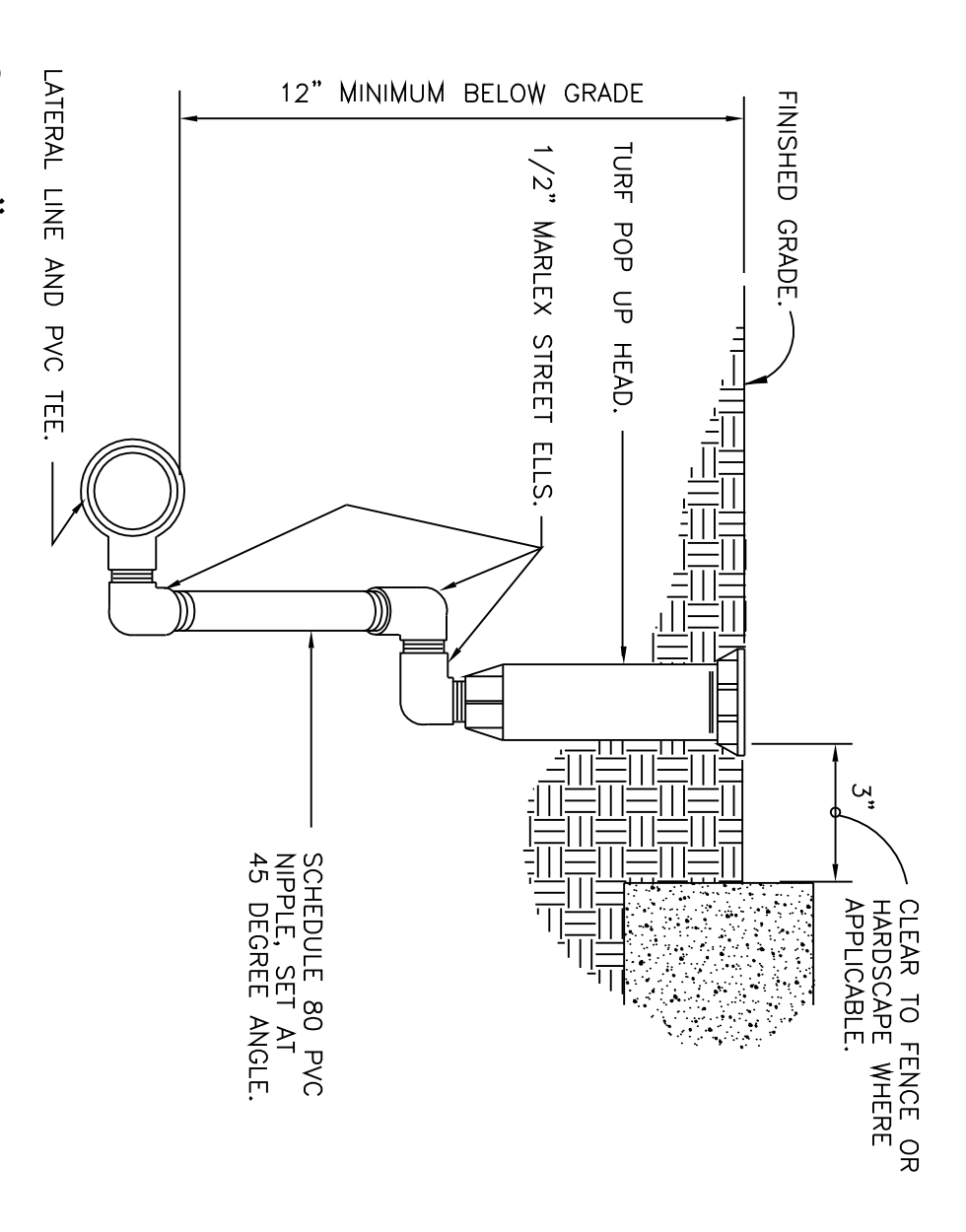
4 4\"/>

- TREE PROTECTION NOTES
1. ALL TREES NOT LOCATED WITHIN THE LIMITS OF CONSTRUCTION AND OUTSIDE OF DISTURBED AREAS SHALL BE PRESERVED. THE CONTRACTOR IS RESPONSIBLE FOR PROTECTING ALL TREES TO BE PRESERVED FROM HIS ACTIVITIES.
 2. ALL TREES SHOWN TO BE REMAINED WITHIN THE LIMITS OF CONSTRUCTION ON THE PLANS, SHALL BE PROTECTED DURING CONSTRUCTION WITH CONSTRUCTION FENCING.
 3. PRIOR TO EXCAVATION OR GRADE CUTTING WITHIN TREE DRILPLES, A CLEAN CUT SHALL BE MADE WITH A CHAINSAW WITH CARBIDE TIPS, ADE MATCHBOOKS OR SIMILAR EQUIPMENT IN A LOCATION AND TO A DEPTH APPROVED BY THE PROJECT MANAGER, TO MINIMIZE DAMAGE TO REMAINING ROOTS.
 4. TREES NOT LOCATED WITHIN THE LIMITS OF CONSTRUCTION SHALL BE PROTECTED BY THE PROJECT MANAGER, TO MINIMIZE DAMAGE TO REMAINING ROOTS.
 5. WHEN INSTALLING CONCRETE ADJACENT TO THE ROOT ZONE OF A TREE, A PLASTIC VAPOR BARRIER SHALL BE PLACED BEHIND THE CONCRETE TO PROHIBIT LEACHING OF LIME INTO THE CRZ.
 6. ANY TRENCHING REQUIRED FOR THE INSTALLATION OF LANDSCAPE IRRIGATION SHALL BE PERMITTED WITHIN THE DRILPLE OR CRZ OF TREES, WHICHEVER IS GREATER. PROTECTION SHALL BE REMOVED ON EACH TAKEUP OF CONCRETE, AND CONSTRUCTION EQUIPMENT SHALL TAKE PLACE BEFORE CONSTRUCTION OF ABRUPTURE (SEA PRUNING TECHNIQUES).
 7. TREES APPROVED FOR REMOVAL SHALL BE REMOVED IN A MANNER WHICH DOES NOT IMPACT TREES TO BE PRESERVED. REFER TO THE CITY OF FRESNO PW STANDARDS AND SPECIFICATIONS FOR APPROPRIATE REMOVAL METHODS.



1 TREE PLANTING

N.T.S.



3 4\"/>

15 SLEEVE DETAIL

N.T.S.

CONSULTANTS:

ARCHITECT/ENGINEERS:

13 TRENCH DETAIL AT ASPHALT PAVING

N.T.S.

9 WATER MAIN CONNECTION

N.T.S.

6 BACKFLOW PREVENTION DEVICE

N.T.S.

4 4\"/>

N.T.S.

2 SHRUB PLANTING

N.T.S.

1 TREE PLANTING

N.T.S.

CONSTRUCTION DOCUMENTS FINAL SUBMISSION

Project Title	VA Northern California Health Care Sys	Project Number	612-CS-102	Office of Construction and Facilities Management
Drawing Title	Parking Structure	Building Number	-	
Approved Project Director		Drawing Number	LS-301	
Location	10335 Hospital Way, Mather CA			
Date	05/19/2011	Checked	ECF	
		Drawn	PG	
		Dwg 31	d 122	