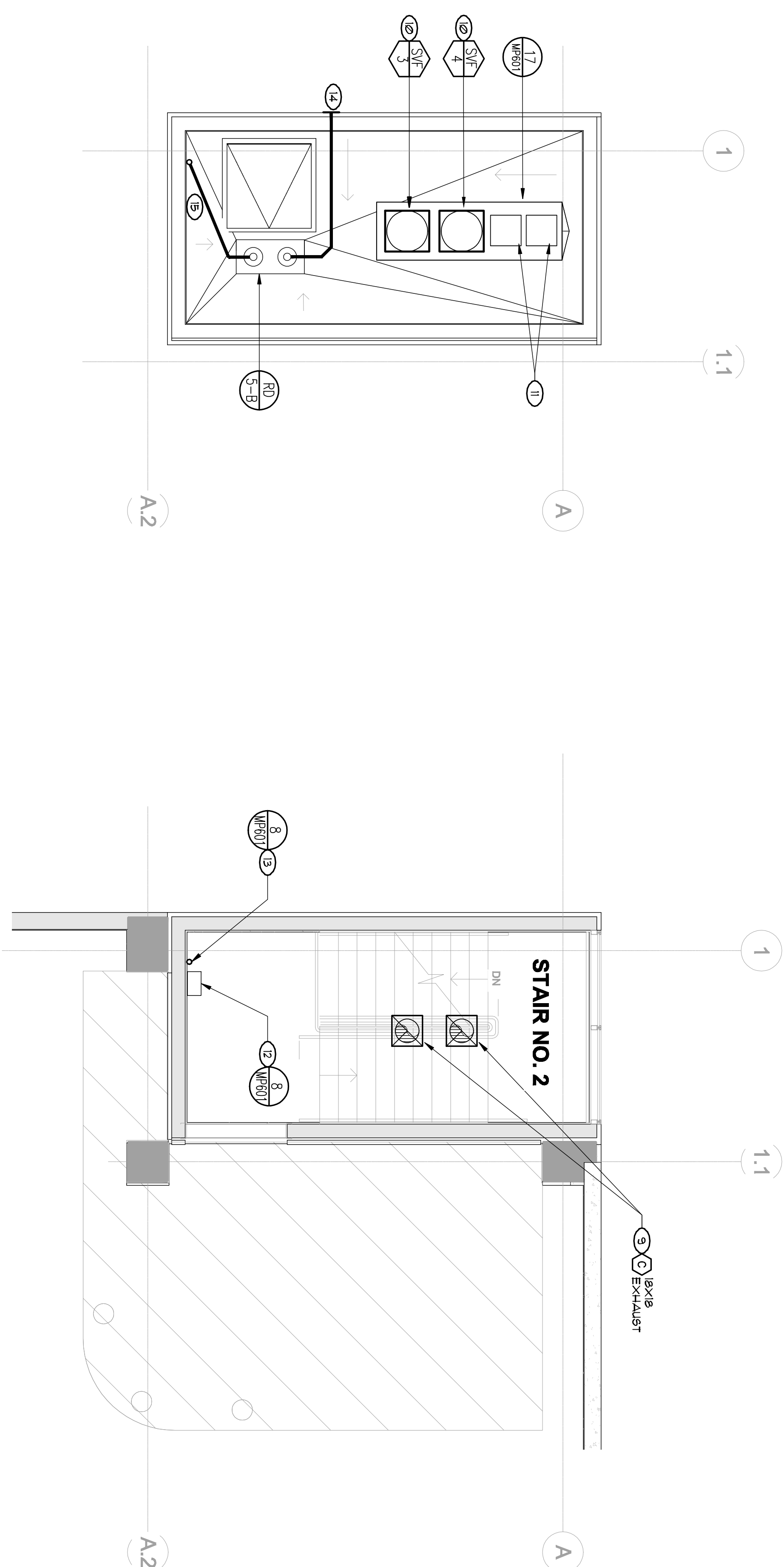





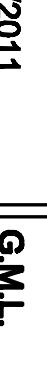
MECHANICAL & PLUMBING MACHINE ROOM ROOF PLAN AND MACHINE ROOM PLAN



- ## KEY NOTES
- ① MOUNT THERMOSTAT AT (1) 48" AFF.
 - ② IDU HANG MOUNTED AT 1'-0" AFF.
 - ③ ROUTE REFRIGERANT LINE FROM ROOF DRAIN TO ROOF DRAIN THRU FLOOR ON ROOF AND ROUTE TO IDU IN MACHINE ROOM.
 - ④ 30"x30" ELEVATOR VENT PROP THRU ROOF OFFSET IN MACHINE ROOM AS SHOWN AND ROOF DRAIN THRU FLOOR ON ELEVATOR SHAFT. SEE SHEET #2404 FOR CONTINUATION.
 - ⑤ TRANSITION DUCT AS REQUIRED TO CONNECT TO ELEVATOR VENT PENETRATOR ON ROOF.
 - ⑥ INDOOR UNIT TO BE EQUIPPED WITH CONDENSATE LIFT PUMP SPECIFIED ON SCHEDULE. (SEE SHEET #2401).
 - ⑦ CONDENSATE FROM IDU, THRU ROOF, PROVIDE UPTIGHT SEAL AT ROOF. ROUTE CONDENSATE TO ROOF DRAIN ELBOW DRAIN AND SPILL INTO ROOF DRAIN.
 - ⑧ SLOPE 1" PER FOOT IN DIRECTION INDICATED. CONNECT TO ROOF DRAIN PIPE WITH APPROVED CONNECTION.
 - ⑨ 14"x VENT DUCT DRAIN FROM THRU FLOOR WITH UPTIGHT SEAL. TERMINATE UPTIGHT CEILING WITH URETHANE FOAM BEHIND EXHAUST GRILLE.
 - ⑩ PROVIDE TRANSITION AS REQUIRED TO CONNECT VENT DUCT TO SOLAR POWERED VENT FAN ON ROOF.
 - ⑪ PREPARE TRANSITION AS REQUIRED TO CONNECT VENT DUCT TO SOLAR PANEL FOR ROOF MOUNTED VENT FAN. ITU AS REQUIRED TO ACHIEVE WEATHER SOLAR EFFICIENCY.
 - ⑫ TYPE 1 METAL, STAINLESS STEEL.
 - ⑬ 3" ROOF DRAIN FROM ROOF ABOVE.
 - ⑭ DAYLIGHT OVER FLOW FROM SIDE OF BUILDING.
 - ⑮ OFFSET DRAIN AND PROP TO BELOW.
 - ⑯ ROOF ACCESS REFER TO ARCH PLAN.

MECHANICAL & PLUMBING STAIR NO.2 ROOF PLAN AND STAIR NO.2 PLAN
1/4" = 1'-0"

CONSTRUCTION DOCUMENTS - FINAL SUBMISSION

CONSULTANTS:			
			
			
ARCHITECT/ENGINEERS:			
 Frampton Consulting Engineers Civil Structural Design Construction One W. Alhambra Ave. Suite 201, CA 91801 TEL: (909) 946-0000 FAX: (909) 946-0000 EMAIL: info@frc-engineers.com			
Drawing Title MECHANICAL & PLUMBING ENLARGED STAIR AND MECHANICAL ROOM PLANS AND ROOF PLANS		Project Title: VA Northern California Health Care System Parking Structure	
Approved: Project Director		Project Number: 6112 - CSI - 102	
Location: 10535 Hospital Way, Mather, CA 95655		Building Number: -	
Date: 08/15/2011		Drawing Number: MP501	
Checked: G.M.L.		Dwg. 106 of 122	
Printed: J.C.R.		 Department of Veterans Affairs	
		Office of Construction and Facilities Management	