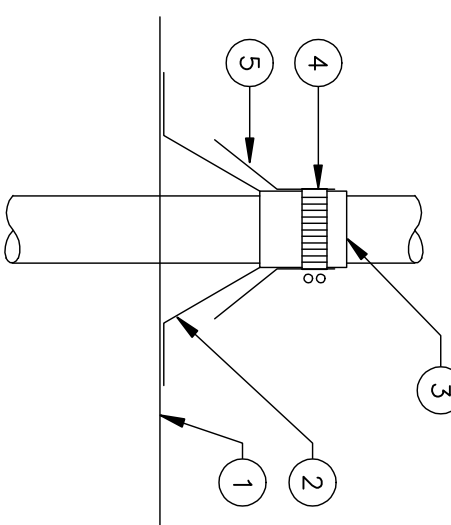
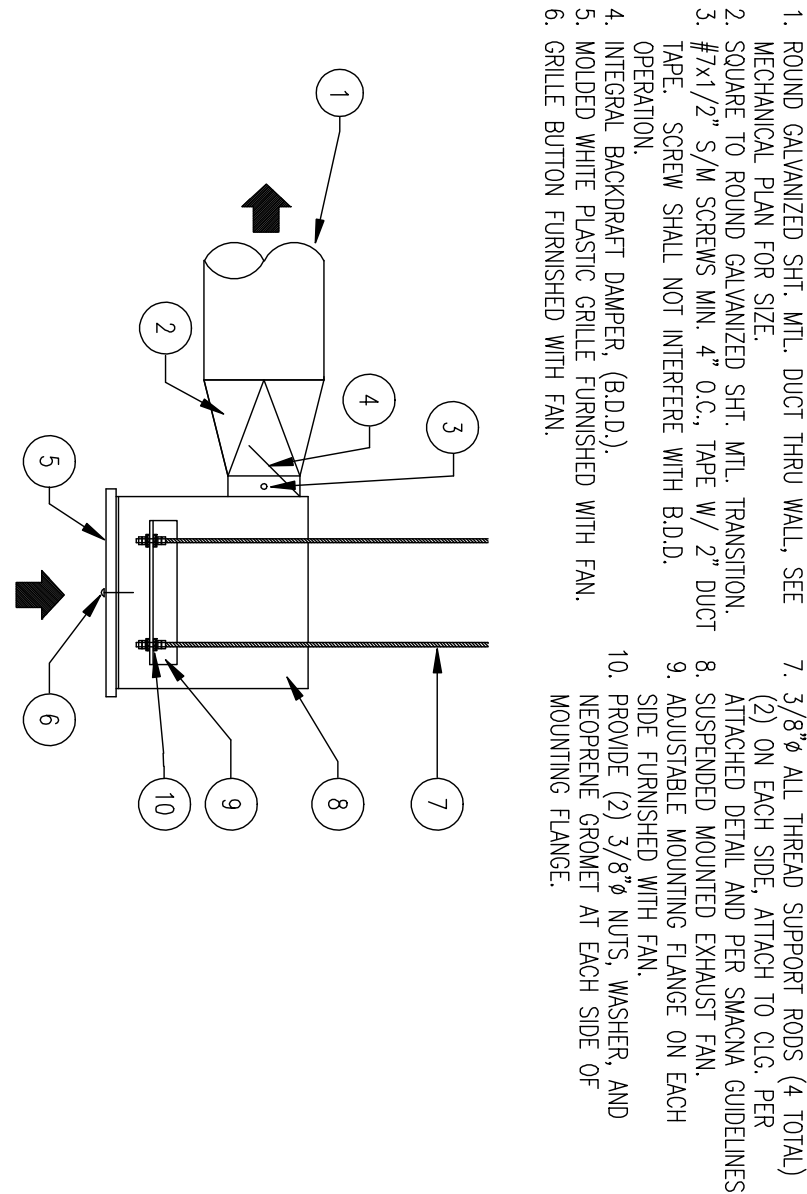


ROOF CURB/ PLATFORM

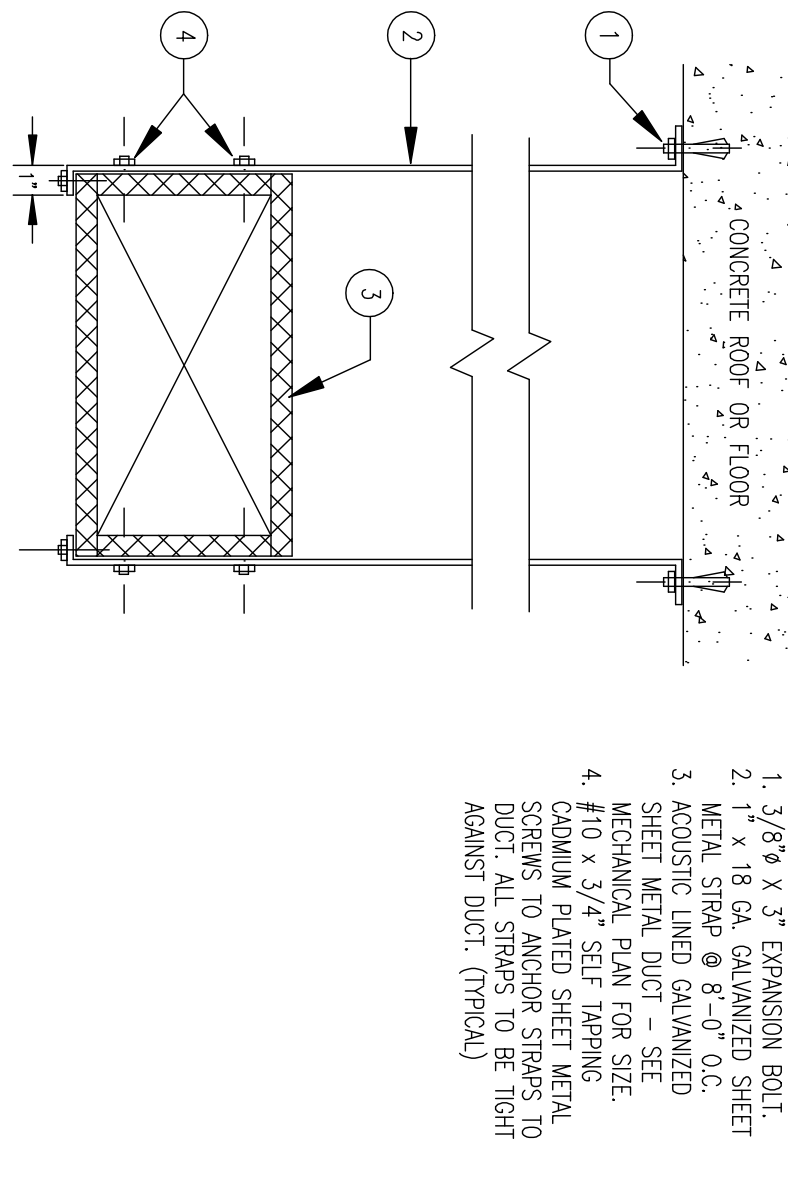
1. FINISH ROOF
2. SHEET METAL FLASHING
3. SILICONE SEAL ALL AROUND
4. SCREW BAND
5. COUNTERFLASHING



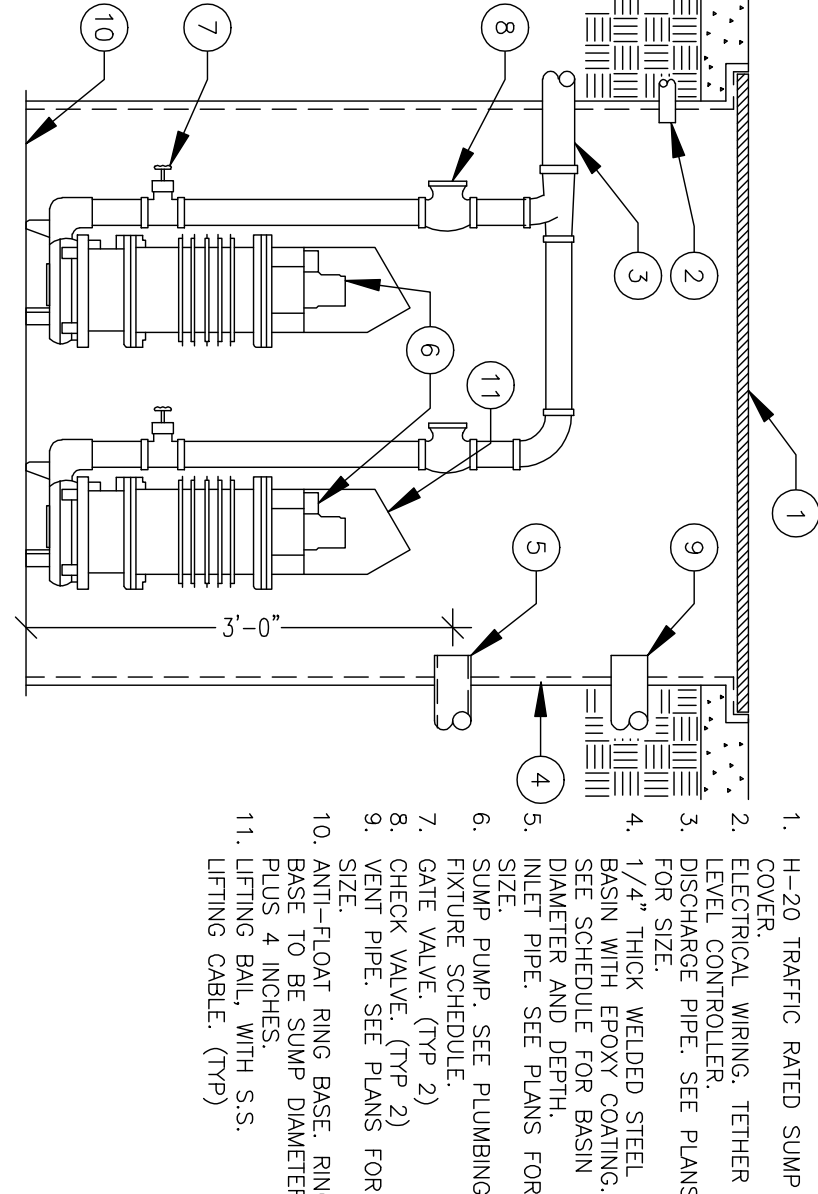
## 18 PIPE THRU ROOF DETAIL



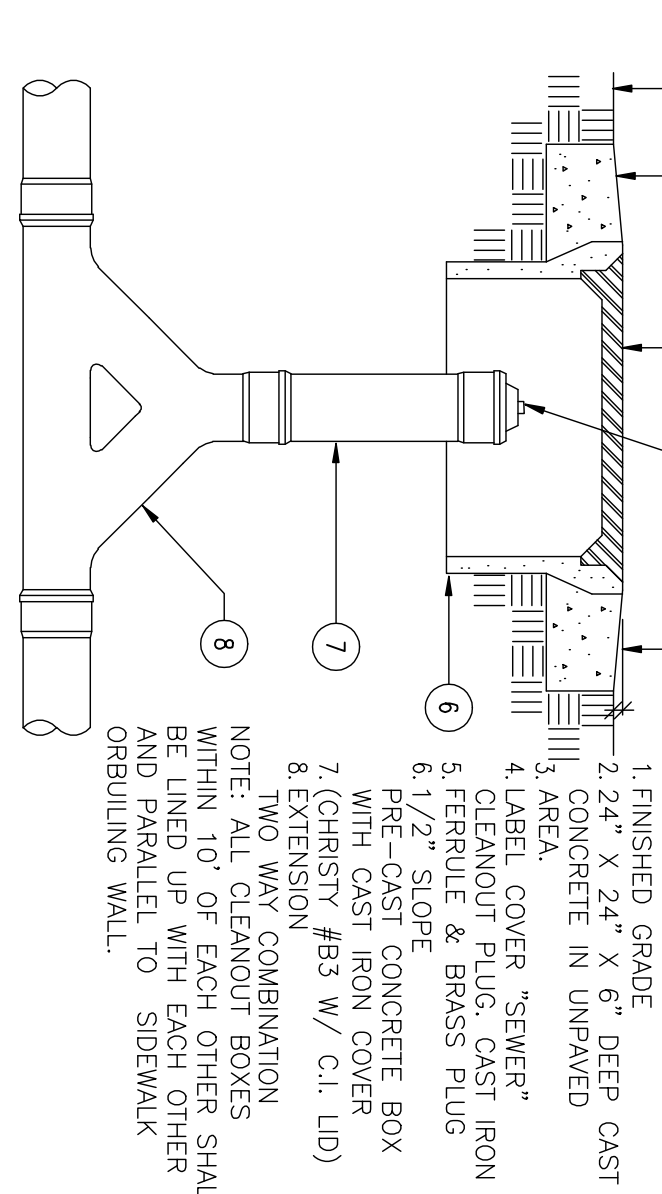
## SUSPENDED EXHAUST FAN



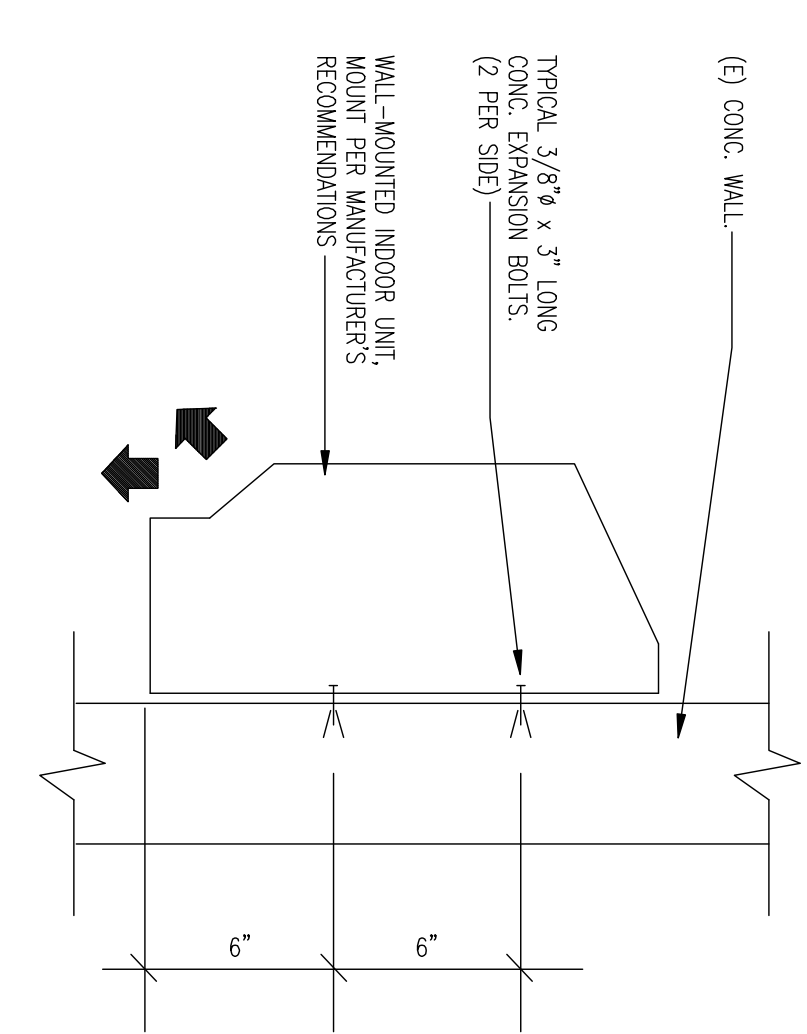
14 DUCT STRAP HANGER



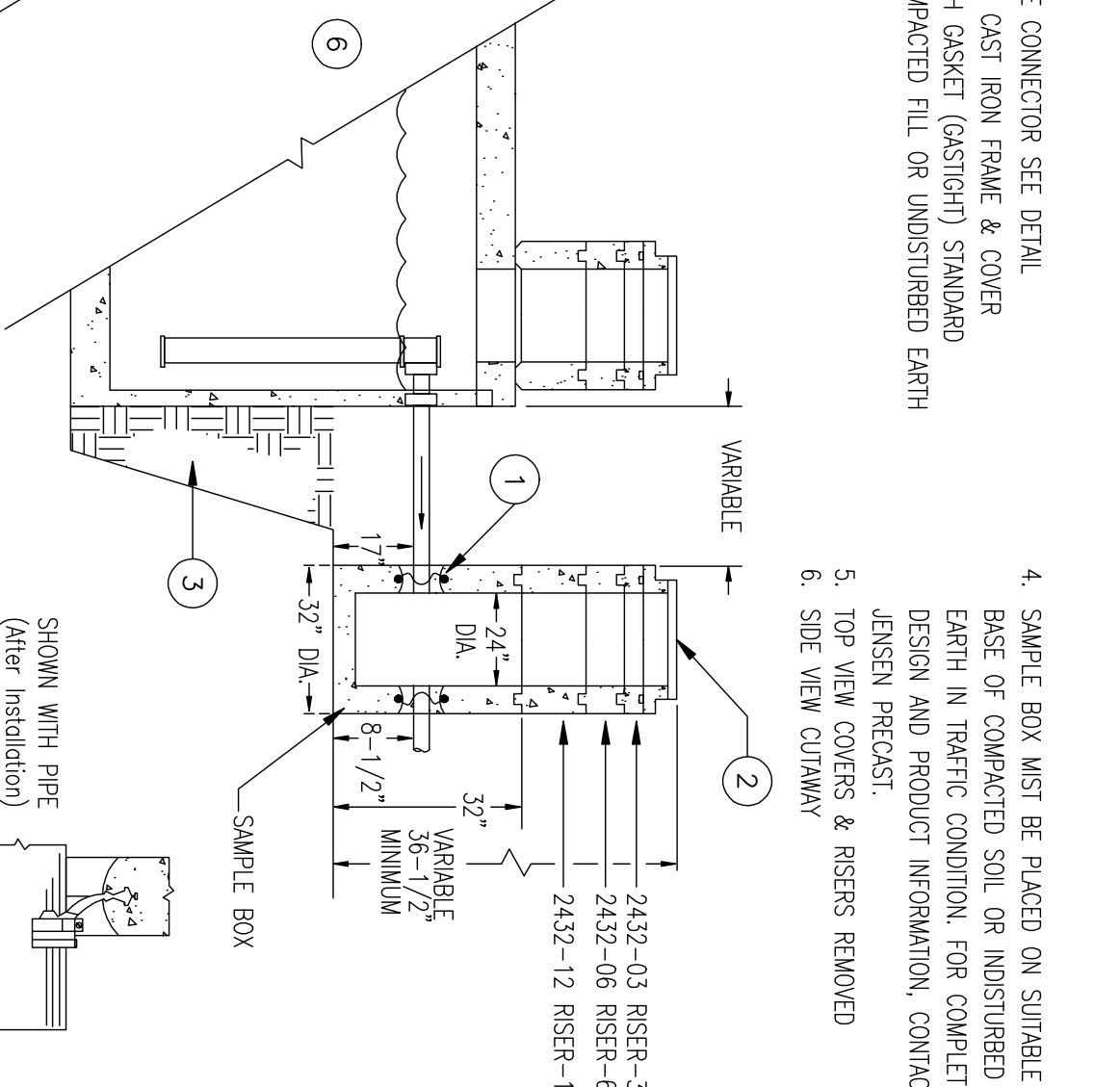
### 15 CATCH BASIN WITH SUMP PUMP



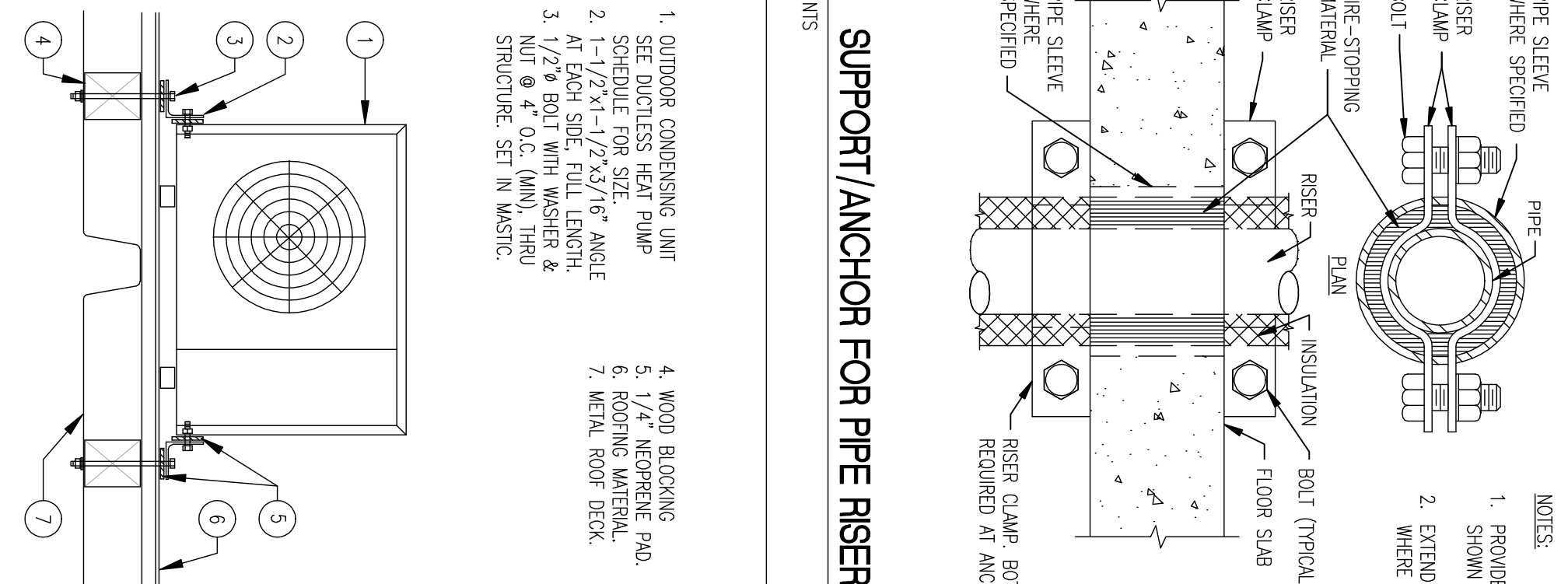
16 TWO WAY CLEAN OUT



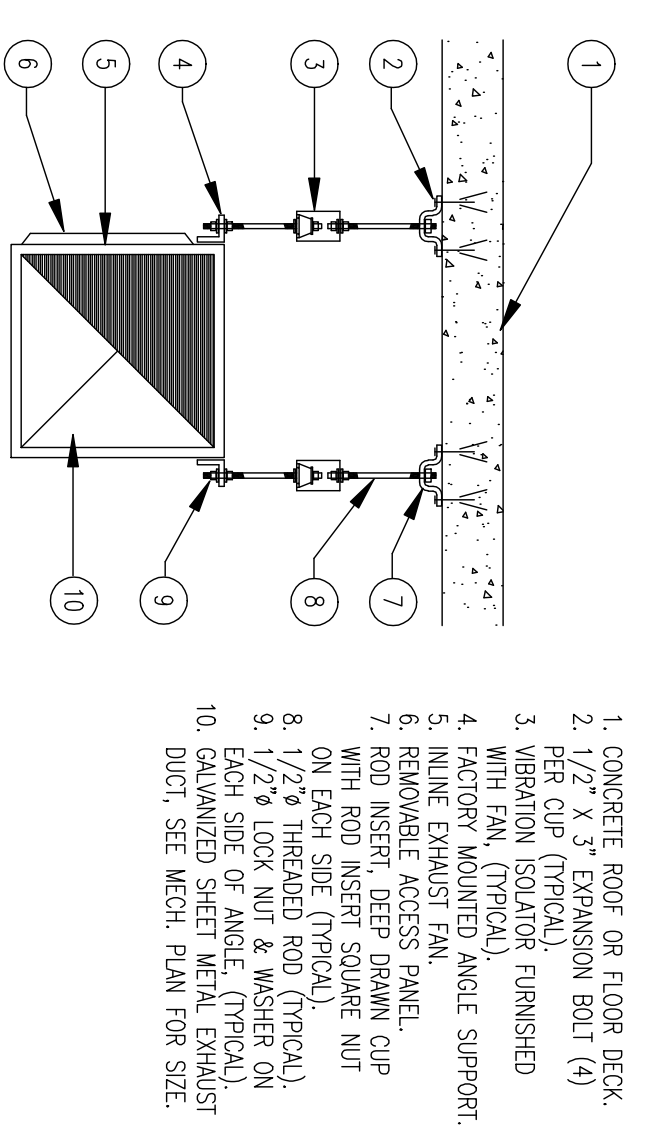
## INDOOR UNIT WALL MOUNTING



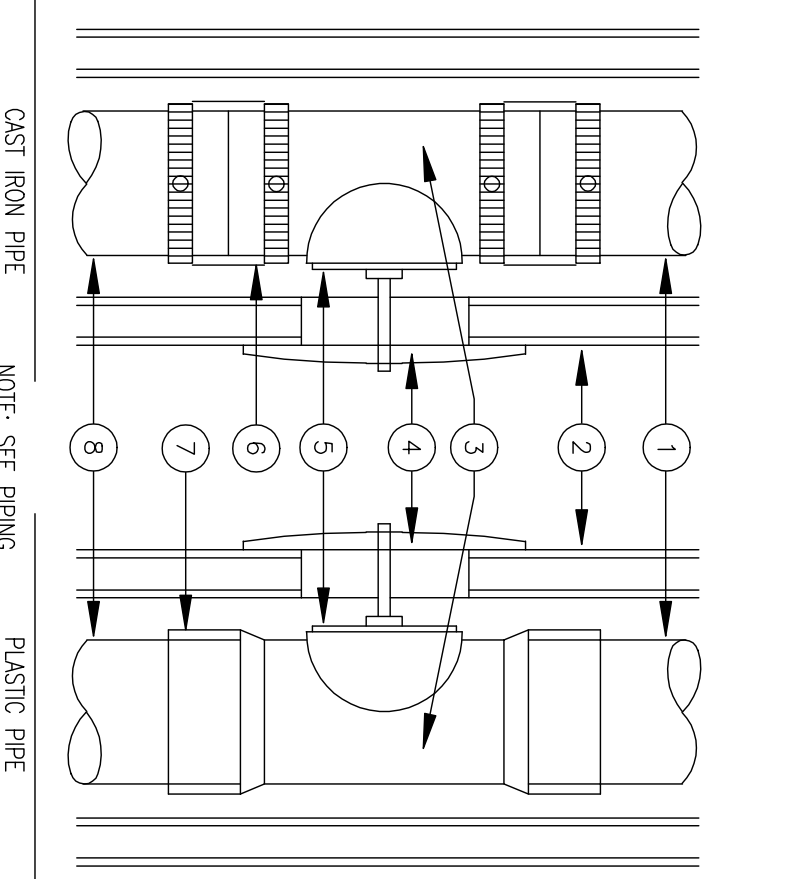
**SUPPORT/ANCHOR FOR PIPE RISER**



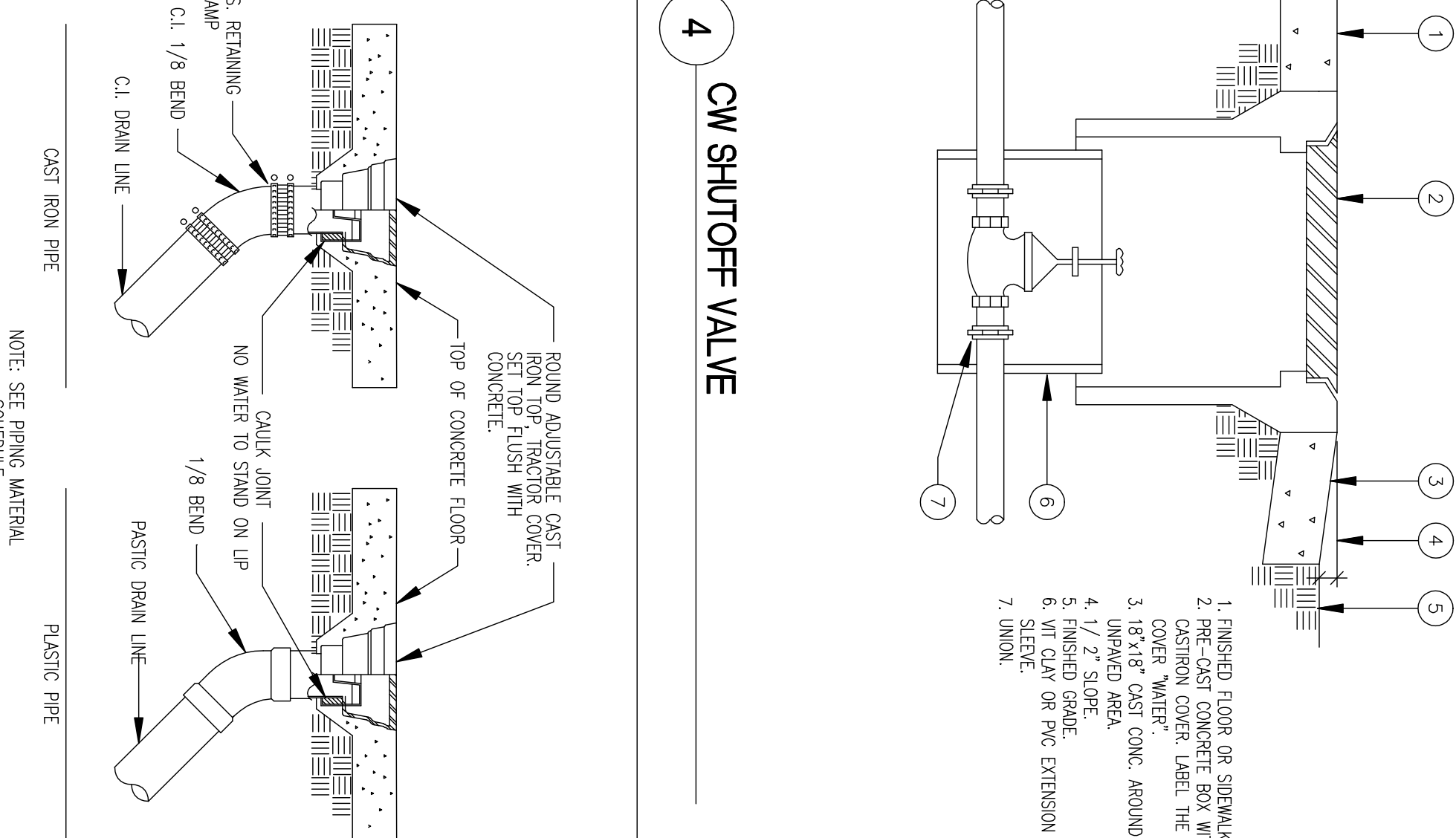
## 9 OUTDOOR UNIT MOUNTING



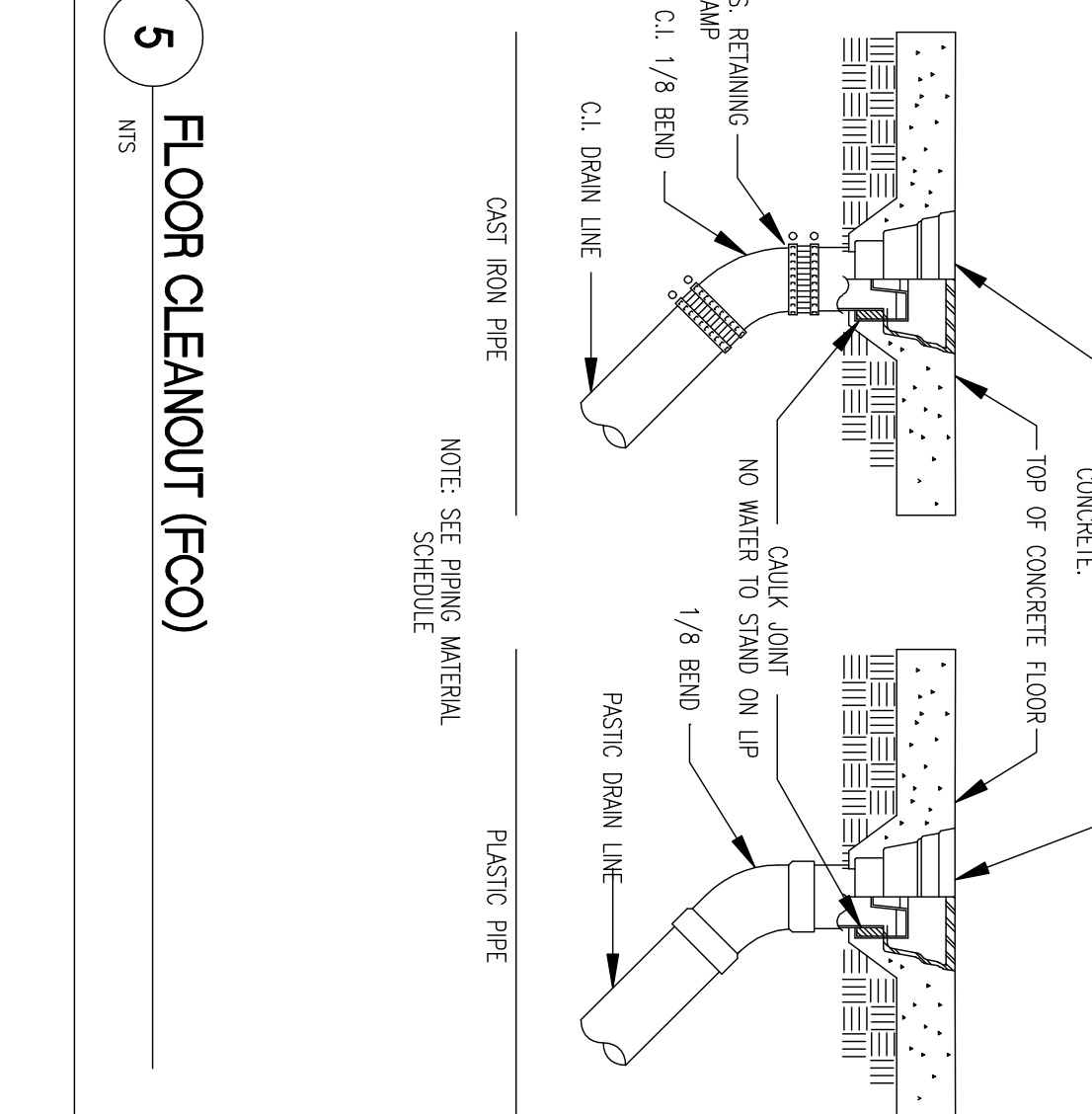
## 2 INLINE EXHAUST FAN MOUNTING



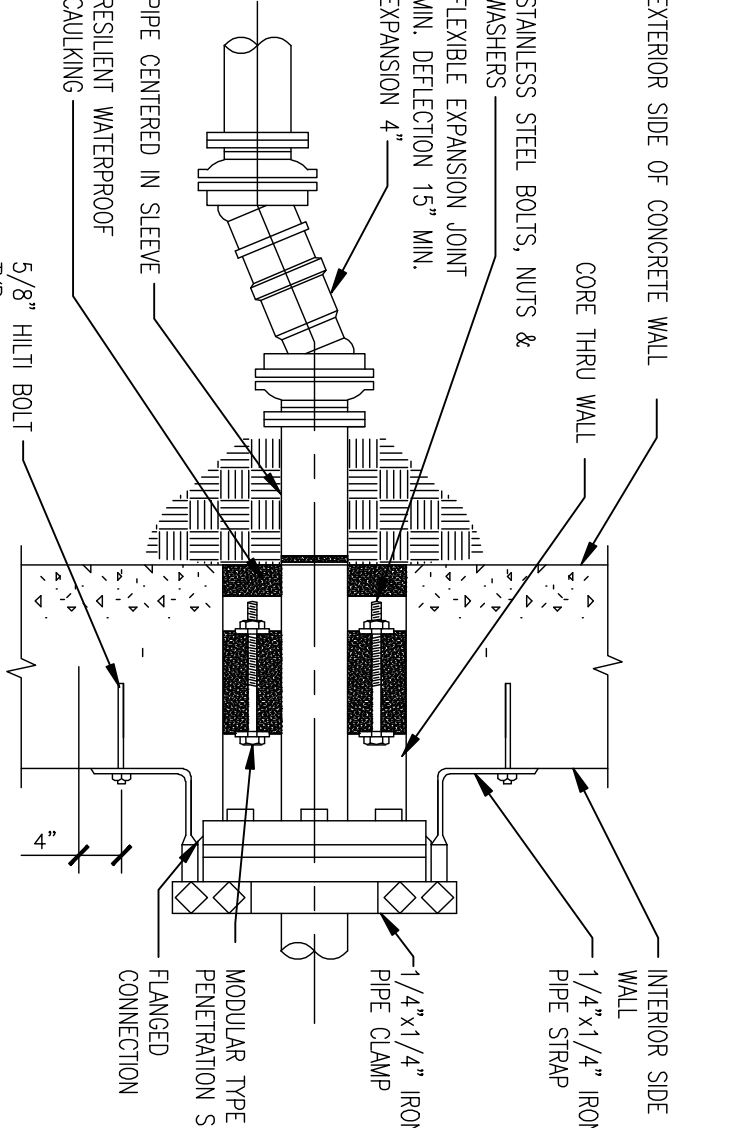
## 7 WALL CLEANOUT



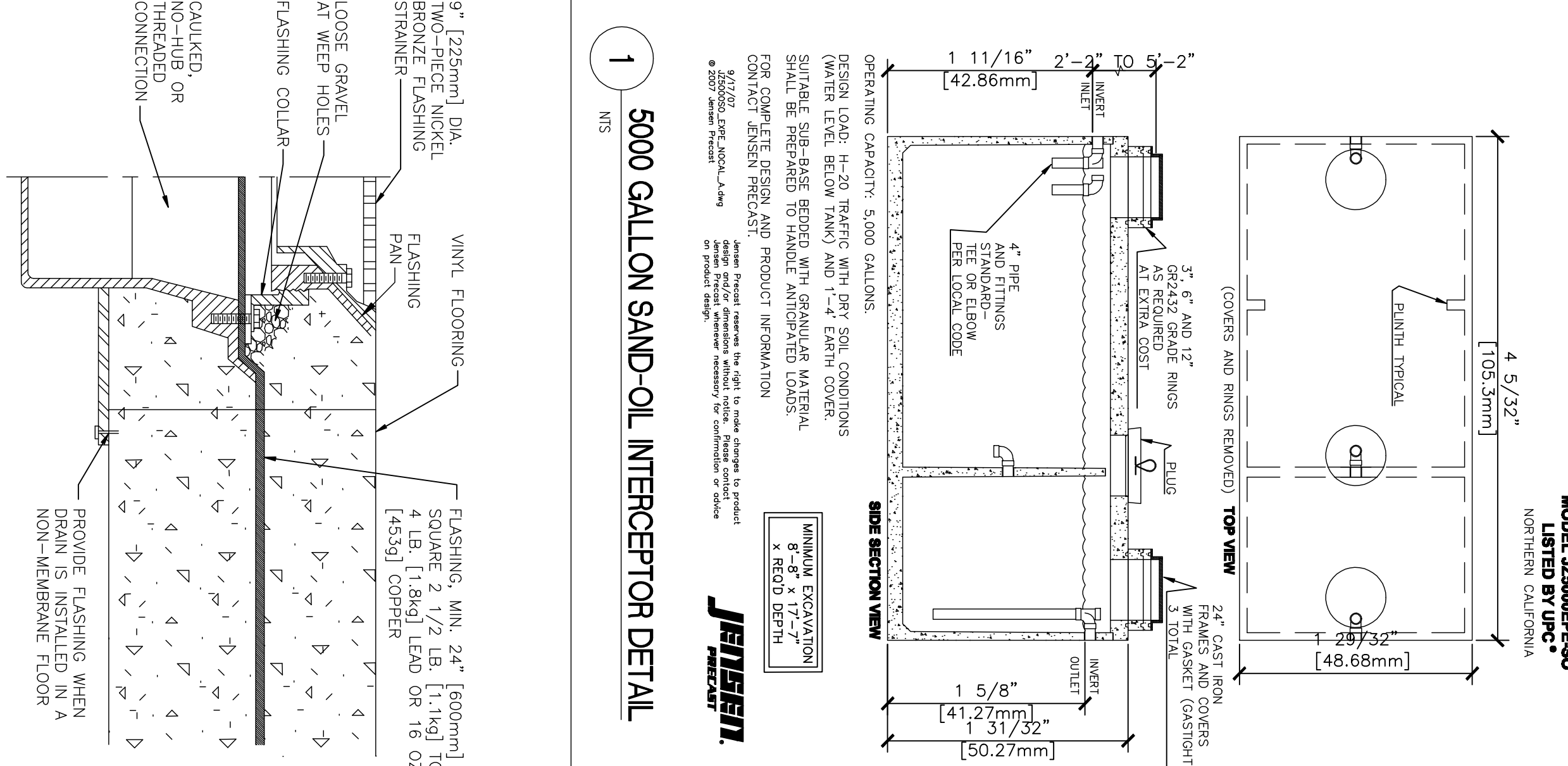
4 CW SHUTOFF VALVE



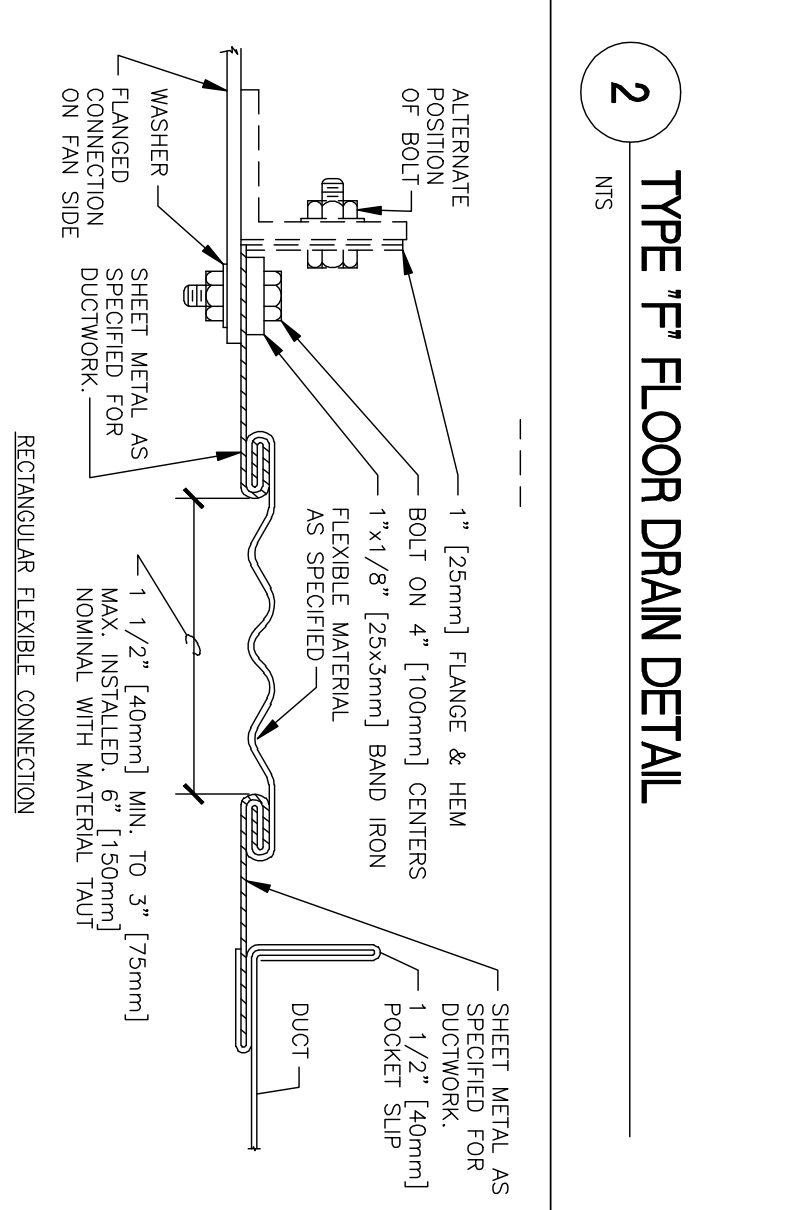
**5 FLOOR CLEANOUT (FCO)**



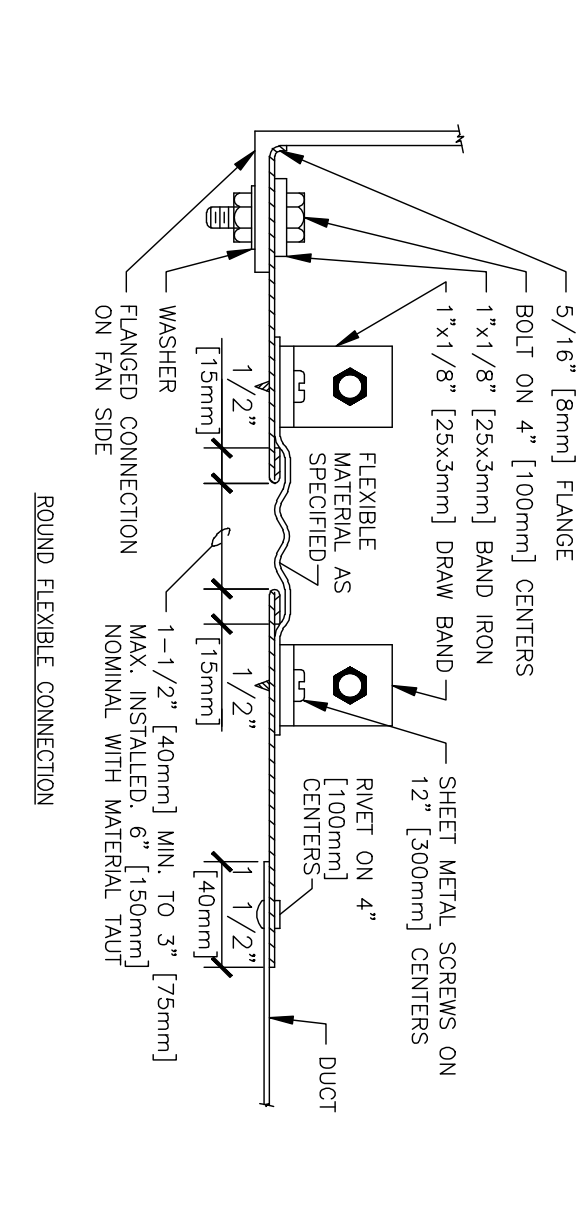
## PIPE PENETRATION



## 5000 GALLON SAND-OIL INTERCEPTOR DETAIL






## TYPE 'F' FLOOR DRAIN DETAIL



## FLEXIBLE DUCT CONNECTIONS

## MECHANICAL & PLUMBING DETAILS

**CONSTRUCTION DOCUMENTS - 100% SUBMISSION**

|   |  |  |  |   |  |  |  |   |  |
|---|--|--|--|---|--|--|--|---|--|
| CONSULTANTS:  |  | ARCHITECT/ENGINEERS:   |  | Drawing Title<br>MECHANICAL & PLUMBING DETAILS                                      |  | Project Title:<br>VA Northern California Health Care Sys.<br>Mental Health Parking Structure |  | Product Number:<br>612-CS1-102                    |  |
|  |  |  |  |  |  | Approved Project Director  |  | Location:<br>10533 Hospital Way, Mather, CA 95655 |  |
|   |  |  |  |   |  | Date:<br>06/09/2011  |  | Drawing Number:<br>MIP601                         |  |
| Revisions:  |  |  |  |   |  | Checked:<br>G.M.L.   |  | Dwg. 103 of 118                                   |  |
| Date:   |  |  |  |   |  | Dwg. 103 of 118  |  | Department of<br>Veterans Affairs                 |  |