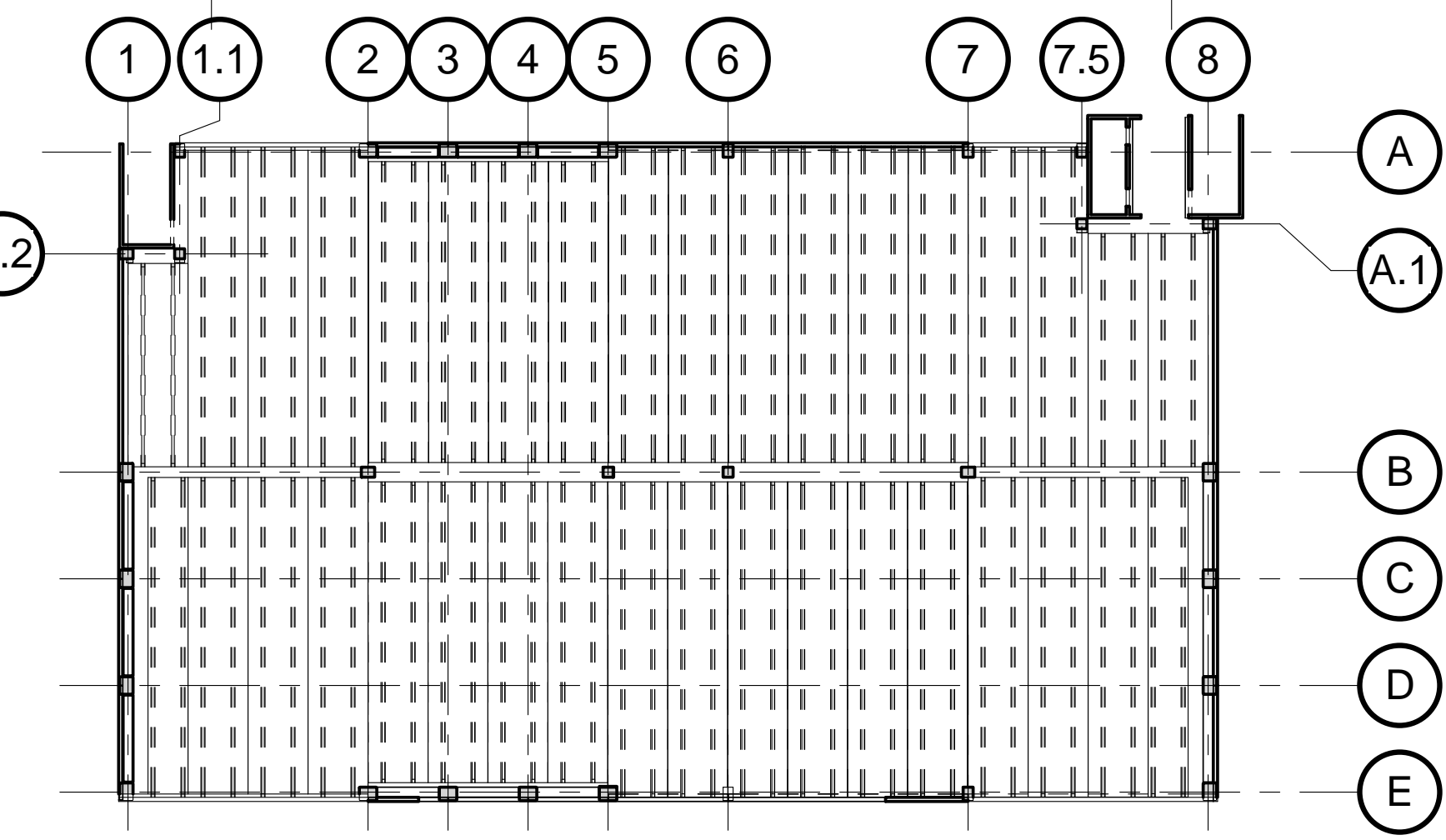


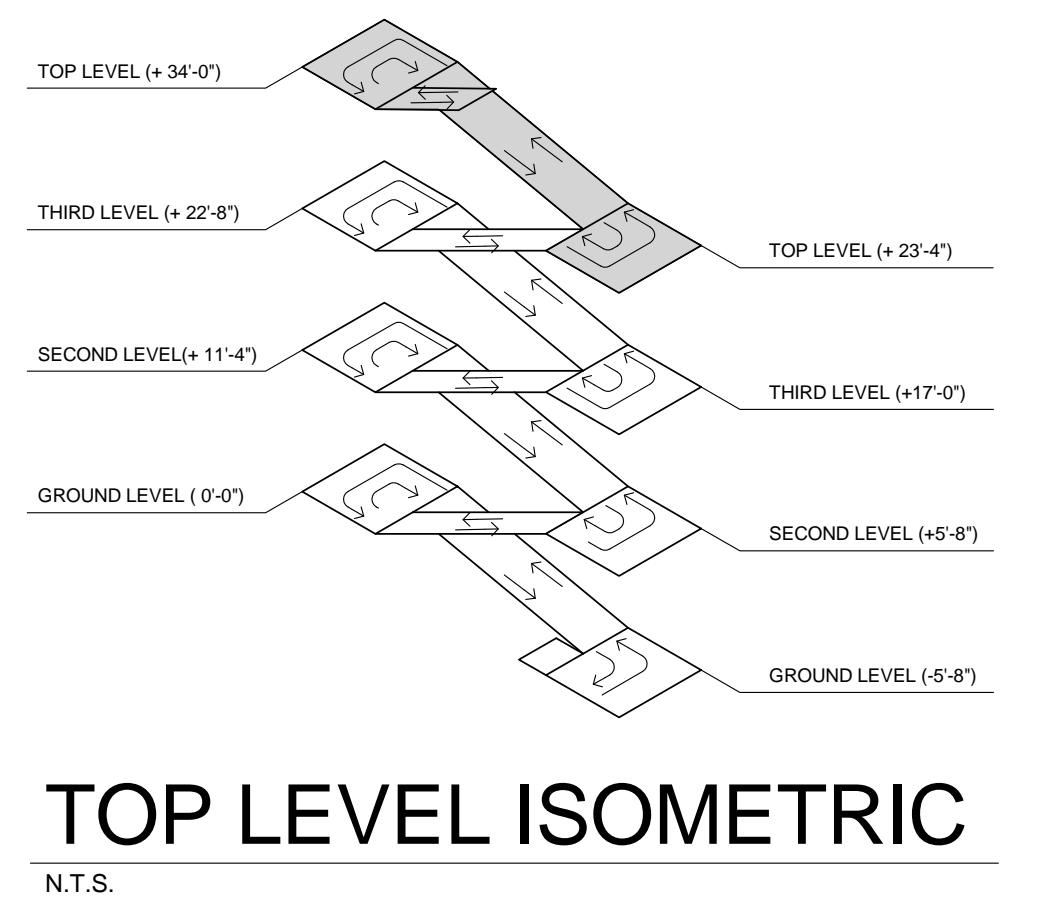
three inches = one foot  
one and one half inches = one foot  
one inch = one foot  
three quarters inch = one foot  
one half inch = one foot  
three eighths inch = one foot  
one quarter inch = one foot  
one eighth inch = one foot

A  
B  
C  
D  
E  
F  
G

NORTH  
TOP LEVEL PLAN  
1/8" = 1'-0"



TOP BAY PLAN  
1/32" = 1'-0"



TOP LEVEL ISOMETRIC  
N.T.S.

- SHEET NOTES:
1. FOR GENERAL NOTES, SEE DRAWING SS 001
  2. FOR LAP SPLICE SCHEDULES, SEE DRAWINGS SS 500 & SS 501
  3. FOR PLAN ELEVATION KEY, SEE SHEET SS 103
  4. FOR FLOOR DRAIN LOCATIONS AND DETAILS, SEE MEP DRAWINGS
  5. FOR R/C COLUMN SIZES AND DETAILS, SEE DRAWING SS 300
  6. FOR STAIR AND STAIR/ELEVATOR TOWERS, SEE DRAWINGS SS 310 & SS 320
  7. FOR FINAL EXTERIOR GRADE ELEVATIONS, SEE CIVIL DRAWINGS
  8. FOR DIMENSIONS OF ROOMS NOT SHOWN, SEE ARCHITECTURAL DRAWINGS
  9. FOR PARKING AND ACCESS AISLE LAYOUT, SEE DRAWINGS AS 101-104
  10. DETAIL CUTS AND INFORMATION SHOWN ON THIS SHEET APPLY TO ALL SUPPORTED LEVEL PLANS U.N.O.
  11. FOR TEE AND BEAM DETAILS, SEE DRAWINGS SS 410 & SS 411
  12. FOR PANEL AND SPANDREL DIMENSIONS, SEE DRAWINGS AS 204-207

CONSULTANTS:		ARCHITECT/ENGINEERS:		Drawing Title Top Level Plan		Project Title: VA Northern California Health Care System Parking Structure		Project Number: 612 - CSI - 102		Office of Construction and Facilities Management  Department of Veterans Affairs			
				Approved: Project Director		Location: 10535 Hospital Way, Mather, CA 95655		Building Number: N/A					
Revisions:				No. 64567 EXPIRES: 06/30/2011 CIVIL STATE OF CALIFORNIA		Date: 06/15/2011		Checked: ECF		Drawn: SJS		Drawing Number: SS 104	
Date								Dwg. 78 of 122					