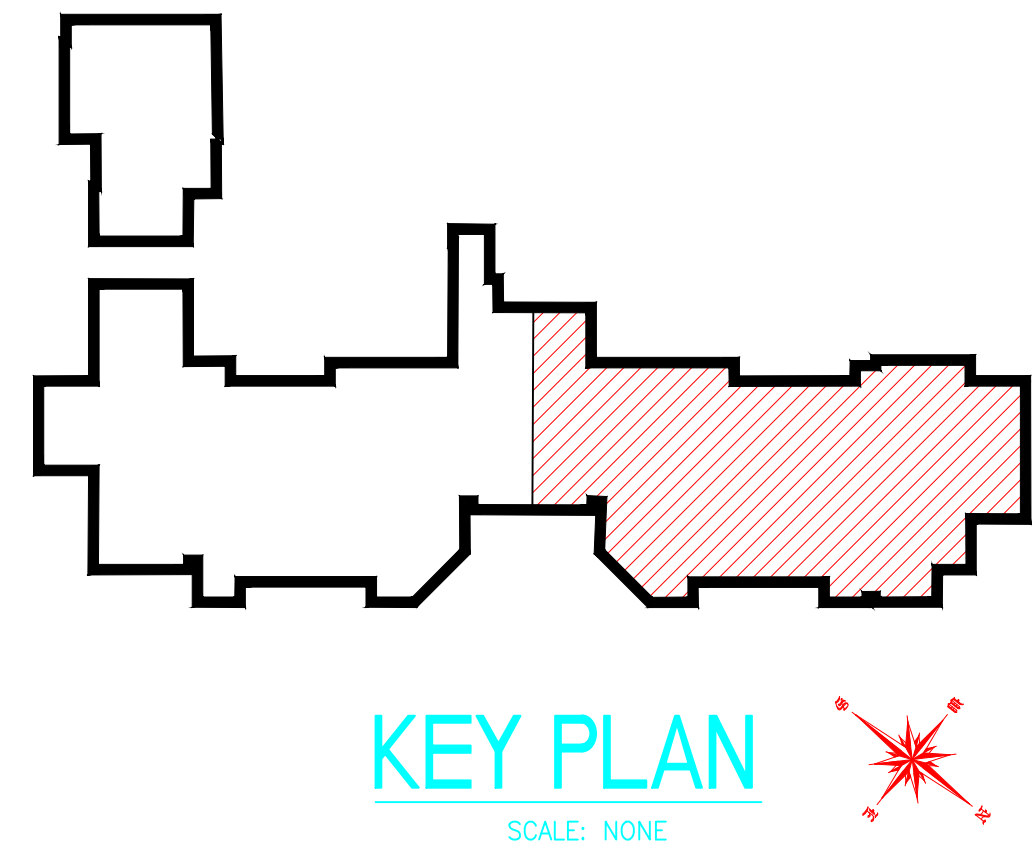


- General Notes:
- 1: This is a confined space with asbestos present.
 - 2: The recommended phasing is as follows: A: Install new piping with valves for tie-ins and test. B: Install return line and test. C: Connect existing risers to new piping.
 - 3: Contractor responsible for removal of existing pipe as shown and hangers.
 - 4: See Details "C" for pipe hanger details.
 - 5: Not all existing shut-off valves may operate, contractor to determine alternative routings and/or methods for shutting off flow during tie-ins.
 - 6: Drain locations to be located in field, clear of existing pipes.

- Detail Notes:
- ① Tee location for connection to existing Domestic Cold Water (DCW) line.
 - ② Tee location for connection to existing Domestic Hot Water (DHW) line.
 - ③ Tee size to be field verified.
 - ④ Cored holes through wall(s).
 - ⑤ Remove existing Domestic Cold Water (DCW) line and all mounting hardware.
 - ⑥ Remove existing Domestic Hot Water (DHW) line and all mounting hardware.
 - ⑦ Remove Dead Leg and all mounting hardware.
 - ⑧ New lockable Isolation Valve.
 - ⑨ Tie-In location to existing 4" Domestic Cold Water (DCW).
 - ⑩ Tie-In location to existing 4" Domestic Hot Water (DHW).
 - ⑪ Pressure Gauge (0-100 PSI).
 - ⑫ Hose Bib, 3/4" (Facing Down).
 - ⑬ Drain location. See General Note 6.



		CONSULTANT	ARCHITECT/ENGINEER OF RECORD	STAMP	<div>Office of Construction and Facilities Management</div> <div>VA U.S. Department of Veterans Affairs</div>	Drawing Title	Phase	Project Title	Project Number	
						NEW COLD WATER PIPING PLAN - NORTH	Construction	Domestic Cold Water Upgrades, B-76	528A6-17-616	
									Building Number	
									76	
Revisions:	Date:					Approved:	Location	Drawing Number		
						Michael A. Harris	Bath, NY		P101	
							NOTE: USERS OF THESE AS-BUILT DRAWINGS ARE RESPONSIBLE FOR VERIFYING EXISTING DIMENSIONS AND CONDITIONS IN THE FIELD	Issue Date 2/28/2017	Checked MH	Drawn SMW