

**ATTACHMENT 1
PICTURES**



Figure 1: Front of building (South side), entrance; public restrooms on right



Figure 2: Condition of stucco (typical)



Figure 3: Condition of window frame, sash, and muntin (typ.)

**ATTACHMENT 1
PICTURES**



Figure 4: East side of building, rear entrance; public restrooms in foreground



Figure 5: Condition of window divider (typ.)



Figure 6: Close up of East side

**ATTACHMENT 1
PICTURES**



Figure 7: Front entrance overhang



Figure 8: Casing to be replaced



Figure 9: Detail of overhang moulding (typ.)

**ATTACHMENT 1
PICTURES**



Figure 10: Side of entrance steps



Figure 11: Front of steps



Figure 12: Over-door light



Figure 13: Dormer (typical of three)



Figure 14: Shutter hardware to be replaced (typ.)



Figure 15: Entrance railing to be replaced

**ATTACHMENT 1
PICTURES**



Figure 16: West side of porch enclosure; repair upper sash, outer two windows



Figure 17: Rotten enclosed porch sill plate

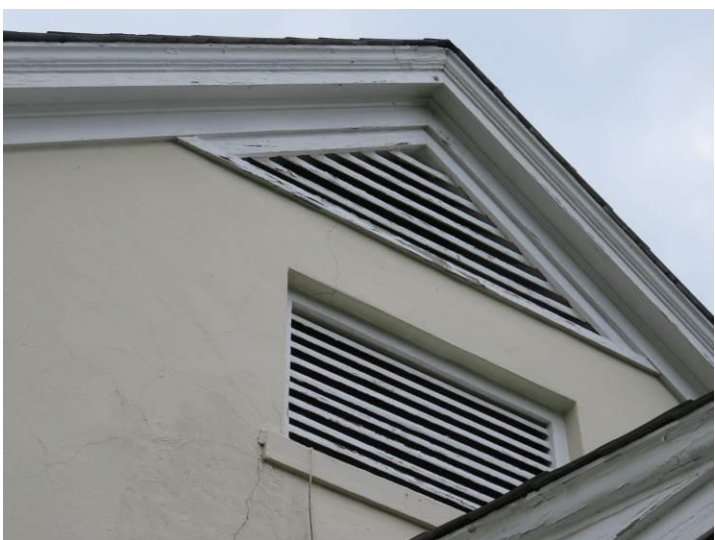


Figure 18: Gable vent (typ.)

**ATTACHMENT 1
PICTURES**



Figure 19: Public restroom railing to be replaced



Figure 20: Public restroom railing to be replaced



Figure 21: Condition of gable trim and moulding (typ.)