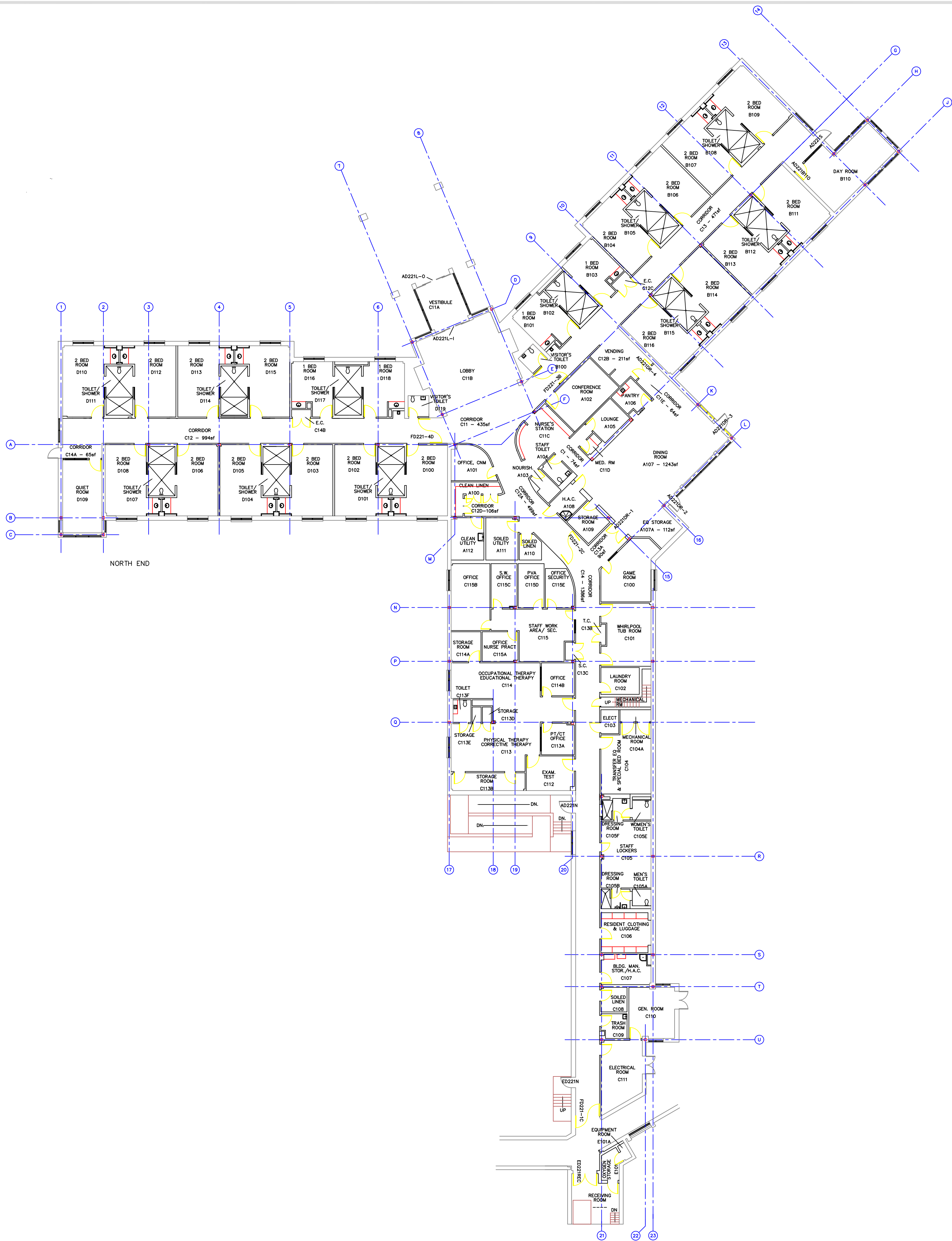


0 1 2 3 4 5 6 7 8 9 10 11 12 13 14 15 16

one-eighth inch = one foot  
one-quarter inch = one foot  
three-eighths inch = one foot  
one-half inch = one foot  
three-quarters inch = one foot  
one inch = one foot  
one and one-half inches = one foot  
three inches = one foot



Revisions		Date	Drawing Title 1ST FLOOR		Project Title -----		Date -----	
Approved: Division Chief		Building No. 221		Checked ----	Drawn ----	Project No. -----		
Approved: Chief Maintenance & Repair		Approved: Service Director		Location V.A. HOSPITAL, HINES, IL		DRAWING NO. -----		
						Dwg. -- Of --		

Office of Facilities

Department of Veterans Affairs