



DEMOLITION & EROSION CONTROL PLAN

SCALE: 1"=10'-0"

0°	5°	10°	15°	20°	25°	30°
----	----	-----	-----	-----	-----	-----

1

3.

10

51

EROSION CONTROL NOTES

- [illegible]

GENERAL NOTES

- A. STORM WATER MANAGEMENT FOR THE PROPOSED DRAINAGE SHALL RETAIN, THE TREAT AND DISPOSE OF STORM WATER RUNOFF EXCEPT THAT THE TREATMENT SHALL BE LIMITED TO THE TREATMENT OF THE STORM WATER RUNOFF.
- B. EXISTING STORM WATER DRAINAGE SHALL BE MAINTAINED AND NOT DISPOSED OF IN ANY MANNER THAT WOULD BE IN VIOLATION OF ANY APPLICABLE REGULATORY REQUIREMENTS.
- C. ALL EROSION CONTROL AND STORM WATER ACQUISIT SHALL BE REQUIRED TO BE INSTALLED AND MAINTAINED BY THE CONTRACTOR DURING CONSTRUCTION.
- D. CONTRACTOR IS RESPONSIBLE FOR OBTAINING A COPY OF INTER 84(1) WITH THE OPA. CONTRACTOR SHALL BE RESPONSIBLE FOR OBTAINING A COPY OF INTER 84(1) WITH THE OPA. CONTRACTOR SHALL BE RESPONSIBLE FOR OBTAINING A COPY OF INTER 84(1) WITH THE OPA.
- E. TO PREVENT STORM WATER FROM BEING DISCHARGED TO THE COASTLINE, THE CONTRACTOR SHALL BE RESPONSIBLE FOR OBTAINING A COPY OF INTER 84(1) WITH THE OPA.
- F. TO PREVENT STORM WATER FROM BEING DISCHARGED TO THE COASTLINE, THE CONTRACTOR SHALL BE RESPONSIBLE FOR OBTAINING A COPY OF INTER 84(1) WITH THE OPA.
- G. TO PREVENT STORM WATER FROM BEING DISCHARGED TO THE COASTLINE, THE CONTRACTOR SHALL BE RESPONSIBLE FOR OBTAINING A COPY OF INTER 84(1) WITH THE OPA.
- H. TO PREVENT STORM WATER FROM BEING DISCHARGED TO THE COASTLINE, THE CONTRACTOR SHALL BE RESPONSIBLE FOR OBTAINING A COPY OF INTER 84(1) WITH THE OPA.
- I. TO PREVENT STORM WATER FROM BEING DISCHARGED TO THE COASTLINE, THE CONTRACTOR SHALL BE RESPONSIBLE FOR OBTAINING A COPY OF INTER 84(1) WITH THE OPA.
- J. TO PREVENT STORM WATER FROM BEING DISCHARGED TO THE COASTLINE, THE CONTRACTOR SHALL BE RESPONSIBLE FOR OBTAINING A COPY OF INTER 84(1) WITH THE OPA.
- K. TO PREVENT STORM WATER FROM BEING DISCHARGED TO THE COASTLINE, THE CONTRACTOR SHALL BE RESPONSIBLE FOR OBTAINING A COPY OF INTER 84(1) WITH THE OPA.
- L. TO PREVENT STORM WATER FROM BEING DISCHARGED TO THE COASTLINE, THE CONTRACTOR SHALL BE RESPONSIBLE FOR OBTAINING A COPY OF INTER 84(1) WITH THE OPA.
- M. TO PREVENT STORM WATER FROM BEING DISCHARGED TO THE COASTLINE, THE CONTRACTOR SHALL BE RESPONSIBLE FOR OBTAINING A COPY OF INTER 84(1) WITH THE OPA.
- N. TO PREVENT STORM WATER FROM BEING DISCHARGED TO THE COASTLINE, THE CONTRACTOR SHALL BE RESPONSIBLE FOR OBTAINING A COPY OF INTER 84(1) WITH THE OPA.
- O. TO PREVENT STORM WATER FROM BEING DISCHARGED TO THE COASTLINE, THE CONTRACTOR SHALL BE RESPONSIBLE FOR OBTAINING A COPY OF INTER 84(1) WITH THE OPA.
- P. TO PREVENT STORM WATER FROM BEING DISCHARGED TO THE COASTLINE, THE CONTRACTOR SHALL BE RESPONSIBLE FOR OBTAINING A COPY OF INTER 84(1) WITH THE OPA.
- Q. TO PREVENT STORM WATER FROM BEING DISCHARGED TO THE COASTLINE, THE CONTRACTOR SHALL BE RESPONSIBLE FOR OBTAINING A COPY OF INTER 84(1) WITH THE OPA.
- R. TO PREVENT STORM WATER FROM BEING DISCHARGED TO THE COASTLINE, THE CONTRACTOR SHALL BE RESPONSIBLE FOR OBTAINING A COPY OF INTER 84(1) WITH THE OPA.
- S. TO PREVENT STORM WATER FROM BEING DISCHARGED TO THE COASTLINE, THE CONTRACTOR SHALL BE RESPONSIBLE FOR OBTAINING A COPY OF INTER 84(1) WITH THE OPA.
- T. TO PREVENT STORM WATER FROM BEING DISCHARGED TO THE COASTLINE, THE CONTRACTOR SHALL BE RESPONSIBLE FOR OBTAINING A COPY OF INTER 84(1) WITH THE OPA.
- U. TO PREVENT STORM WATER FROM BEING DISCHARGED TO THE COASTLINE, THE CONTRACTOR SHALL BE RESPONSIBLE FOR OBTAINING A COPY OF INTER 84(1) WITH THE OPA.
- V. TO PREVENT STORM WATER FROM BEING DISCHARGED TO THE COASTLINE, THE CONTRACTOR SHALL BE RESPONSIBLE FOR OBTAINING A COPY OF INTER 84(1) WITH THE OPA.
- W. TO PREVENT STORM WATER FROM BEING DISCHARGED TO THE COASTLINE, THE CONTRACTOR SHALL BE RESPONSIBLE FOR OBTAINING A COPY OF INTER 84(1) WITH THE OPA.
- X. TO PREVENT STORM WATER FROM BEING DISCHARGED TO THE COASTLINE, THE CONTRACTOR SHALL BE RESPONSIBLE FOR OBTAINING A COPY OF INTER 84(1) WITH THE OPA.
- Y. TO PREVENT STORM WATER FROM BEING DISCHARGED TO THE COASTLINE, THE CONTRACTOR SHALL BE RESPONSIBLE FOR OBTAINING A COPY OF INTER 84(1) WITH THE OPA.
- Z. TO PREVENT STORM WATER FROM BEING DISCHARGED TO THE COASTLINE, THE CONTRACTOR SHALL BE RESPONSIBLE FOR OBTAINING A COPY OF INTER 84(1) WITH THE OPA.

⑦ SHEET NOTES

- [illegible]

GPR SYMBOLS

- 
 PAST DOT INDICATING POSSIBLE PIPING LOCATED BY GROUND PENETRATING RADAR

 PAST LINE INDICATING POSSIBLE PIPING LOCATED BY GROUND PENETRATING RADAR

 PASTED AREA INDICATING POSSIBLE PIPING LOCATED BY

SHEET LEGEND

- | | | |
|---|-----------------------------|---------------------------------|
|  | SEGMENT STOP | ASPHALT PAVEMENT TO BE REMOVED |
|  | AREA OF ACTIVE CONSTRUCTION | CONCRETE PAVEMENT TO BE REMOVED |

[illegible]

GENERAL NOTES

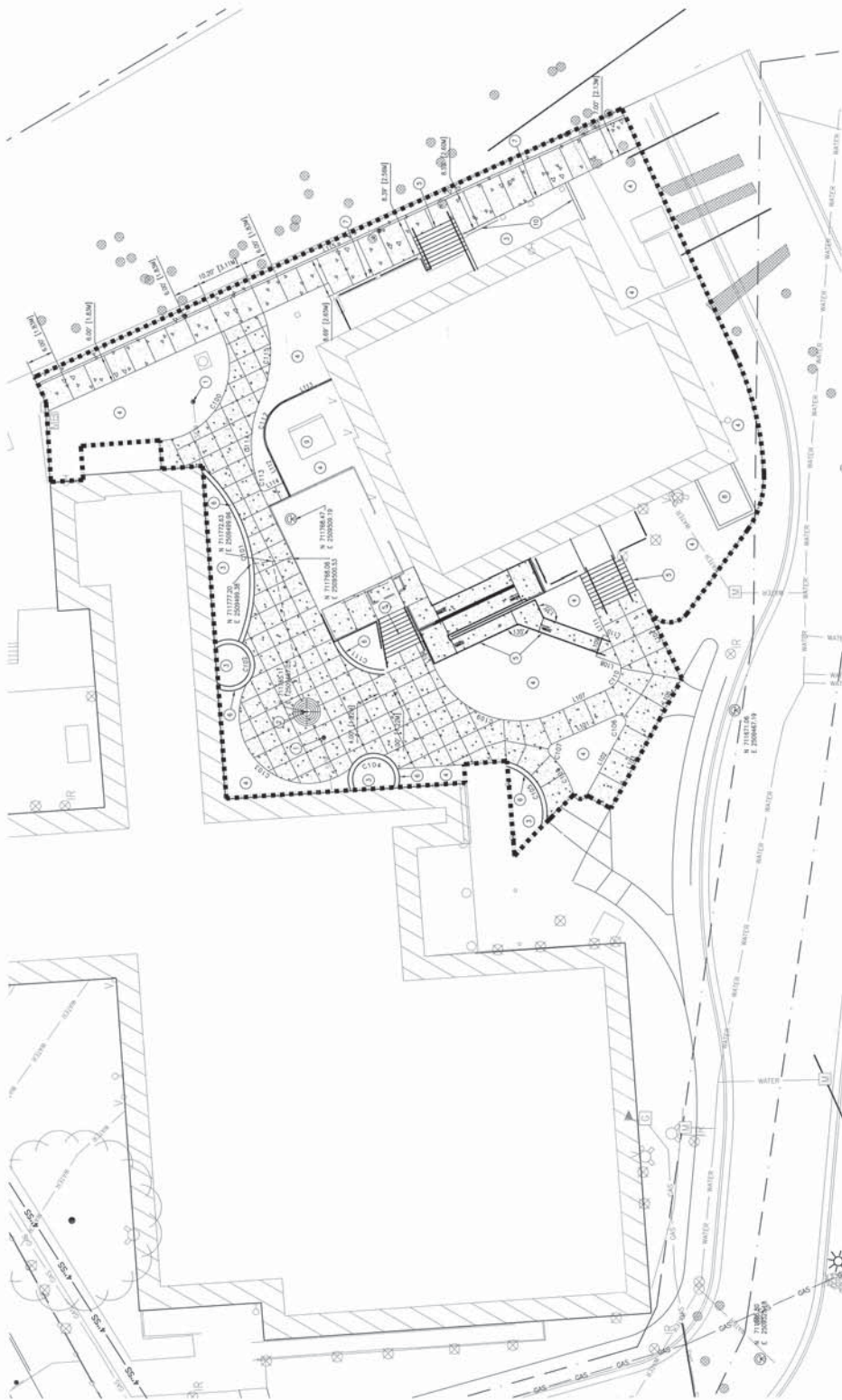
- A. TOPOGRAPHIC SURVEY PROVIDED BY FOX LAND SURVEYING, INC.
- B. LINE TABLE AND CURVE TABLE ARE BASED ON TOP BACK OF CURB, EDGE OF SIDEWALK.
- C. ALL WORK SHALL BE PHASED AND CONDUCTED TO MINIMIZE IMPACT ON PEDESTRIAN AND VEHICULAR TRAFFIC.

① SHEET NOTES

1. EXISTING SHIP WALL TO REMAIN AND BE PROTECTED.
2. TIE WALL, RE. LANDSCAPE DRAINAGE.
3. EXISTING PLANTING, RE. LANDSCAPE DRAINAGE.
4. PLANTING, RE. LANDSCAPE DRAINAGE.
5. SEE ARCHITECTURAL DRAWINGS FOR DIMENSIONING OF THE RAMP AND STAIRS SEE C13 FOR RAMP GRADIENT AND DETAILS.
6. RECONING WALL, RE. LANDSCAPE DRAINAGE.
7. PLACE CONCRETE SIDEWALK AGAINST EXISTING CONCRETE WALL.
8. [C] MECHANICAL ACCESS PIT.
9. [C] MECHANICAL EQUIPMENT PANS.
10. REPAIRING WALL, RE. C13-11 AND C13-13.

SHEET LEGEND

- ☐ AREA OF ACTIVE CONSTRUCTION
☐ NEW CONCRETE PAVEMENT
☐ SURVEY CONTROL POINT

[illegible][illegible][illegible]

SHEET LEGEND

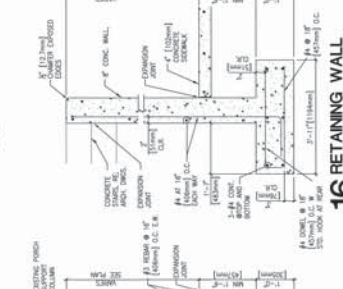
- [illegible]

① SHEET NOTES

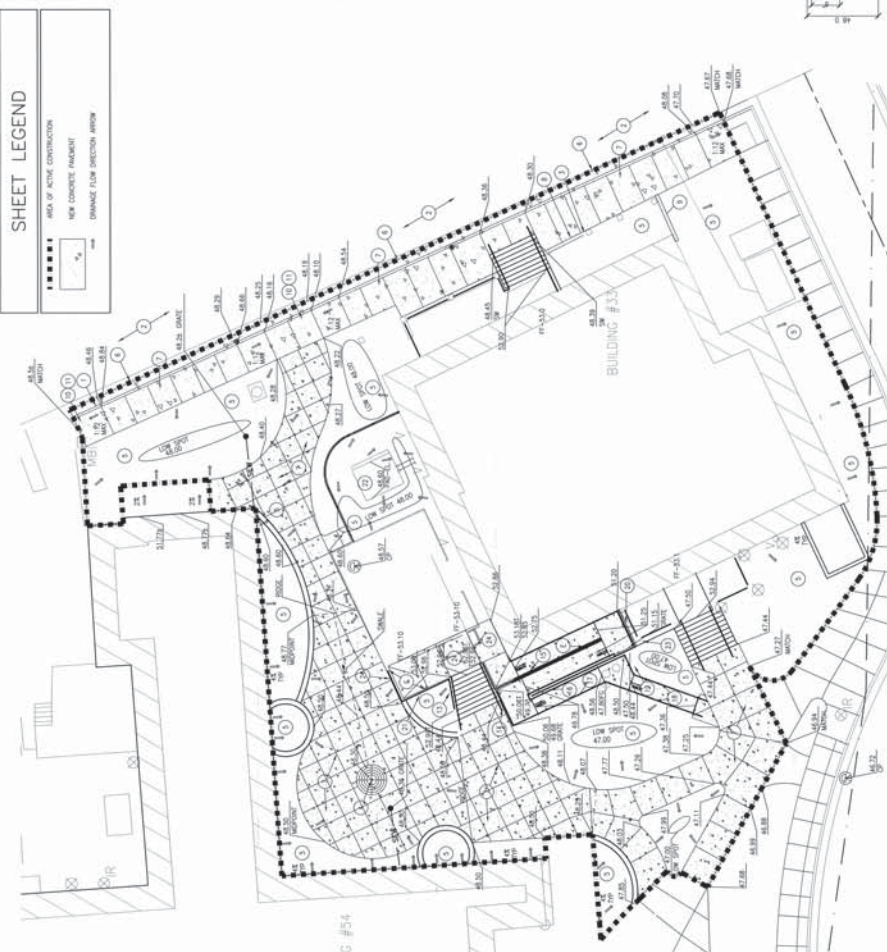
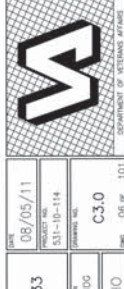
- [illegible]



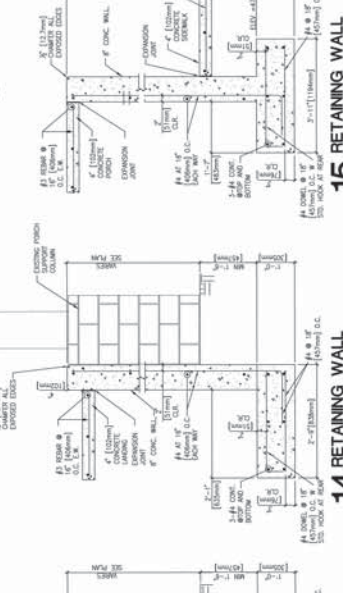
17 TYP CORNER REINFORCING 18 FOOTING STEP



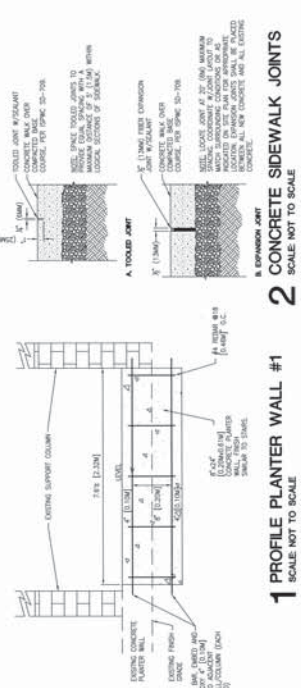
16 RETAINING WALL



CRADING PLAN



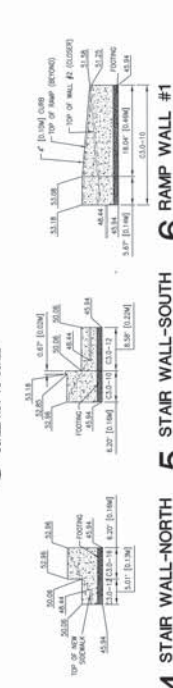
15 RETAINING WALL
SCALE: NOT TO SCALE



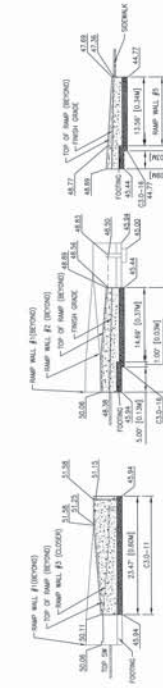
2 CONCRETE SIDEWALK JOINTS



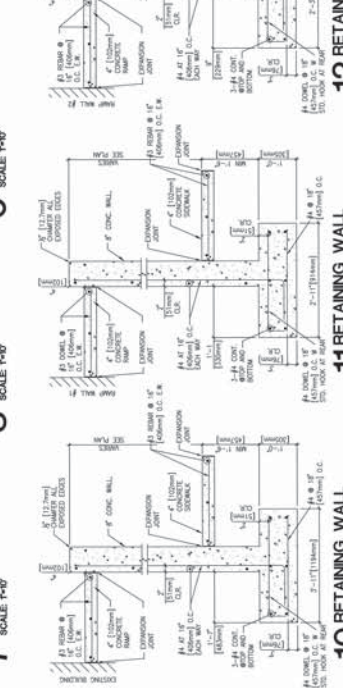
3 PLAN PLANTER WALL #2



5. STAIR WALL-SOUTH



5' - 1" C30-12



12 RETAIN (COUNT TO 20)

