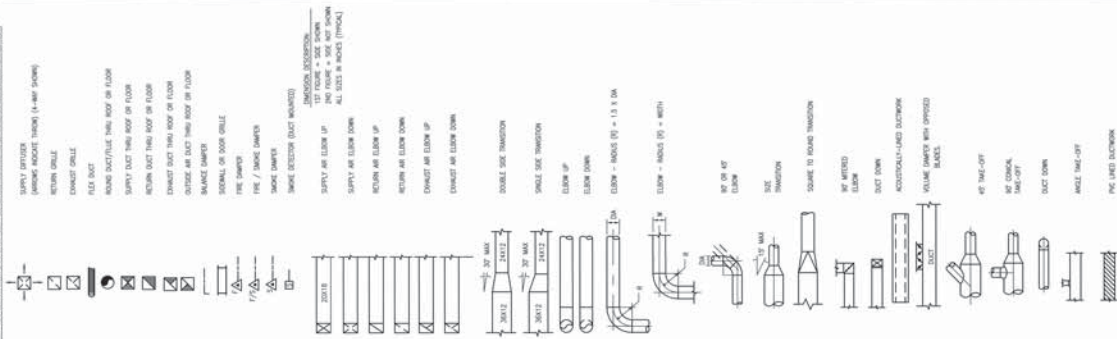


## MECHANICAL ABBREVIATIONS

[illegible]

## MECHANICAL DUCTWORK SYMBOLS



## MECHANICAL PIPING SYMBOLS



## MECHANICAL CONTROL SYMBOLS



**PAGE INDEX**

MECHANICAL COVER SHEET	N0.1
MECHANICAL EQUIPMENT SCHEDULES	N0.2
GROUND FLOOR MECHANICAL PLAN	N0.3
FIRST FLOOR MECHANICAL PLAN	N0.4
SECOND FLOOR MECHANICAL PLAN	N0.5
THIRD FLOOR MECHANICAL PLAN	N0.6
ROOF MECHANICAL PLAN	N0.7
FIRST FLOOR HYDROIC PLAN	N0.8
SECOND FLOOR HYDROIC PLAN	N0.9
MECHANICAL DETAILS	N0.10
HEATING WATER HYDROIC SCHEMATIC	N0.11
COLD WATER HYDROIC SCHEMATIC	N0.12

## MECHANICAL GENERAL NOTES

- [illegible]

## CONVERSION TABLE

[illegible]

## MECHANICAL

[illegible][illegible]

#### SPLIT SYSTEM AC UNIT SCHEDULE

[illegible]

## VAV TERMINAL UNIT SCHEDULE

NAME	R#PR	MODEL	LOCATION	TYPE	PRIMARY AIR VALVE			HOT WATER HEAT. COIL			FLOW	LWT.	COL. FLOW	HW. LINE	WATER PL.	REMARKS
					HEAT. RGT.	MAX. SUPPLY	MIN. DEMAND	APPROX. H <sub>2</sub> O SUPPLY	EAT. LWT.	MAX. SUPPLY						
ARM-101	CANES	ARM-101	FIRST FLOOR	SINGLE DUCT W/ W/REPEAT	127.05	161.80	161.80	13.203	38.2 (10.9)	4.1	200 (140)	48 (12.1)	1.8 (0.5)	13.15	4.1	(1)
ARM-102	CANES	ARM-102	FIRST FLOOR	SINGLE DUCT W/ W/REPEAT	127.05	161.80	161.80	13.203	38.2 (10.9)	4.1	200 (140)	48 (12.1)	1.8 (0.5)	13.15	4.1	(1)
ARM-103	CANES	ARM-103	FIRST FLOOR	SINGLE DUCT W/ W/REPEAT	152.05	188.00	188.00	12.203	32.2 (9.8)	3.5	160 (140)	48 (12.1)	3.0 (0.8)	13.15	3.1	(1)
ARM-104	CANES	ARM-104	FIRST FLOOR	SINGLE DUCT W/ W/REPEAT	127.05	161.80	161.80	13.203	38.2 (10.9)	4.1	200 (140)	48 (12.1)	1.8 (0.5)	13.15	4.1	(1)
ARM-105	CANES	ARM-105	FIRST FLOOR	SINGLE DUCT W/ W/REPEAT	127.05	161.80	161.80	13.203	38.2 (10.9)	4.1	200 (140)	48 (12.1)	1.8 (0.5)	13.15	4.1	(1)
ARM-106	CANES	ARM-106	FIRST FLOOR	SINGLE DUCT W/ W/REPEAT	127.05	161.80	161.80	13.203	38.2 (10.9)	4.1	200 (140)	48 (12.1)	1.8 (0.5)	13.15	4.1	(1)
ARM-107	CANES	ARM-107	FIRST FLOOR	SINGLE DUCT W/ W/REPEAT	127.05	161.80	161.80	13.203	38.2 (10.9)	4.1	200 (140)	48 (12.1)	1.8 (0.5)	13.15	4.1	(1)
ARM-108	CANES	ARM-108	SECOND FLOOR	SINGLE DUCT W/ W/REPEAT	152.05	188.00	188.00	12.203	32.2 (9.8)	3.5	160 (140)	48 (12.1)	3.0 (0.8)	13.15	3.1	(1)
ARM-109	CANES	ARM-109	SECOND FLOOR	SINGLE DUCT W/ W/REPEAT	152.05	188.00	188.00	12.203	32.2 (9.8)	3.5	160 (140)	48 (12.1)	3.0 (0.8)	13.15	3.1	(1)
ARM-110	CANES	ARM-110	SECOND FLOOR	SINGLE DUCT W/ W/REPEAT	152.05	188.00	188.00	12.203	32.2 (9.8)	3.5	160 (140)	48 (12.1)	3.0 (0.8)	13.15	3.1	(1)
ARM-111	CANES	ARM-111	SECOND FLOOR	SINGLE DUCT W/ W/REPEAT	152.05	188.00	188.00	12.203	32.2 (9.8)	3.5	160 (140)	48 (12.1)	3.0 (0.8)	13.15	3.1	(1)
ARM-112	CANES	ARM-112	SECOND FLOOR	SINGLE DUCT W/ W/REPEAT	152.05	188.00	188.00	12.203	32.2 (9.8)	3.5	160 (140)	48 (12.1)	3.0 (0.8)	13.15	3.1	(1)
ARM-113	CANES	ARM-113	SECOND FLOOR	SINGLE DUCT W/ W/REPEAT	152.05	188.00	188.00	12.203	32.2 (9.8)	3.5	160 (140)	48 (12.1)	3.0 (0.8)	13.15	3.1	(1)
ARM-114	CANES	ARM-114	SECOND FLOOR	SINGLE DUCT W/ W/REPEAT	127.05	161.80	161.80	13.203	38.2 (10.9)	4.1	200 (140)	48 (12.1)	1.8 (0.5)	13.15	4.1	(1)
ARM-115	CANES	ARM-115	SECOND FLOOR	SINGLE DUCT W/ W/REPEAT	127.05	161.80	161.80	13.203	38.2 (10.9)	4.1	200 (140)	48 (12.1)	1.8 (0.5)	13.15	4.1	(1)
ARM-116	CANES	ARM-116	SECOND FLOOR	SINGLE DUCT W/ W/REPEAT	127.05	161.80	161.80	13.203	38.2 (10.9)	4.1	200 (140)	48 (12.1)	1.8 (0.5)	13.15	4.1	(1)
ARM-117	CANES	ARM-117	SECOND FLOOR	SINGLE DUCT W/ W/REPEAT	127.05	161.80	161.80	13.203	38.2 (10.9)	4.1	200 (140)	48 (12.1)	1.8 (0.5)	13.15	4.1	(1)
ARM-118	CANES	ARM-118	SECOND FLOOR	SINGLE DUCT W/ W/REPEAT	127.05	161.80	161.80	13.203	38.2 (10.9)	4.1	200 (140)	48 (12.1)	1.8 (0.5)	13.15	4.1	(1)
ARM-119	CANES	ARM-119	SECOND FLOOR	SINGLE DUCT W/ W/REPEAT	127.05	161.80	161.80	13.203	38.2 (10.9)	4.1	200 (140)	48 (12.1)	1.8 (0.5)	13.15	4.1	(1)
ARM-120	CANES	ARM-120	SECOND FLOOR	SINGLE DUCT W/ W/REPEAT	127.05	161.80	161.80	13.203	38.2 (10.9)	4.1	200 (140)	48 (12.1)	1.8 (0.5)	13.15	4.1	(1)

① REMARKS:  
1. ALL DUCT PRESSURE UNIT FURNISHED WITH CONTROLS INCLUSIVE - HOT WATER HEATING COIL AND DIFFERENTIAL PRESSURE SENSING VALVES.  
2. FURNISH WITH FACTORY ATTENUATOR SECTION. REC. HANG PLANS FOR OUTLET SIZE AND QUANTITIES.

## FAN SCHEDULE

[illegible]

### DIFFUSER, REGISTER AND GRILLE SCHEDULE

REFERENCE		MOUNTING						REMARKS	
MARK	REF ID	MODEL	DESCRIPTION	FACE TYPE	FRAME SIZE (MM DIA)	RECTANGULAR SIZE (MM DIA)	MAX. M-30 TONG	COLOR	
HWA	DS-1	DSF	SMALL SPURRY DIFFUSER	UNPAID	410 (247) × 410 (247)	305 (197)	438 (282)	WHITE	①
	DS-2	DSF	SMALL SPURRY DIFFUSER	UNPAID	410 (247) × 410 (247)	305 (197)	438 (282)	WHITE	②
	DS-3	DSF	SMALL SPURRY DIFFUSER	UNPAID	410 (247) × 410 (247)	305 (197)	438 (282)	WHITE	③
	DS-4	DSF	SMALL SPURRY DIFFUSER	UNPAID	410 (247) × 410 (247)	305 (197)	438 (282)	WHITE	④
	DS-5	DSF	SMALL SPURRY DIFFUSER	UNPAID	410 (247) × 410 (247)	305 (197)	438 (282)	WHITE	⑤
HWA	DS-6	DSF	SMALL SPURRY DIFFUSER	UNPAID	410 (247) × 410 (247)	305 (197)	438 (282)	WHITE	⑥
	DS-7	DSF	SMALL SPURRY DIFFUSER	UNPAID	410 (247) × 410 (247)	305 (197)	438 (282)	WHITE	⑦
	DS-8	DSF	SMALL SPURRY DIFFUSER	UNPAID	410 (247) × 410 (247)	305 (197)	438 (282)	WHITE	⑧
	DS-9	DSF	SMALL SPURRY DIFFUSER	UNPAID	410 (247) × 410 (247)	305 (197)	438 (282)	WHITE	⑨
	DS-10	DSF	SMALL SPURRY DIFFUSER	UNPAID	410 (247) × 410 (247)	305 (197)	438 (282)	WHITE	⑩
HWA	DS-11	DSF	RETURN BALL	EGGSHANE	305 (197) × 410 (247)	254 (167) × 330 (217)	439 (1100)	WHITE	⑪
	DS-12	DSF	RETURN BALL	EGGSHANE	305 (197) × 410 (247)	254 (167) × 330 (217)	439 (1100)	WHITE	⑫
	DS-13	DSF	RETURN BALL	EGGSHANE	305 (197) × 305 (197)	254 (167) × 254 (167)	1186 (7000)	WHITE	⑬
	DS-14	DSF	ENLIGHTEN BALL	EGGSHANE	305 (197) × 305 (197)	254 (167) × 254 (167)	1186 (7000)	WHITE	⑭
	DS-15	DSF	ENLIGHTEN BALL	EGGSHANE	305 (197) × 305 (197)	254 (167) × 254 (167)	1186 (7000)	WHITE	⑮

#### PHYSICAL REQUIREMENTS:

- TYPICAL REQUIREMENTS**
- A. VERIFY CEILING AND WALL CONSTRUCTION ON ARCHITECTURAL DRAWINGS. PROVIDE CORRECT FRAME TYPES.
- B. DIFFUSER SHALL BE FURNISHED WITH 4-MIL THICK UNLESS INDICATED OTHERWISE ON DRAWING.
- REMARKS**
1. FURNISH WITH ROUND-SQUARE TRANSITION.
  2. PAINT BOUND ORILLE FLAT BLACK.
  3. FURNISH WITH A [610 mm (24") x 610 mm (24") SIZE MODULE FOR INSTALLATION IN LAI-N CEILING GRID.
  4. FURNISH DUCT TO REGISTER TRANSITION.

1

-



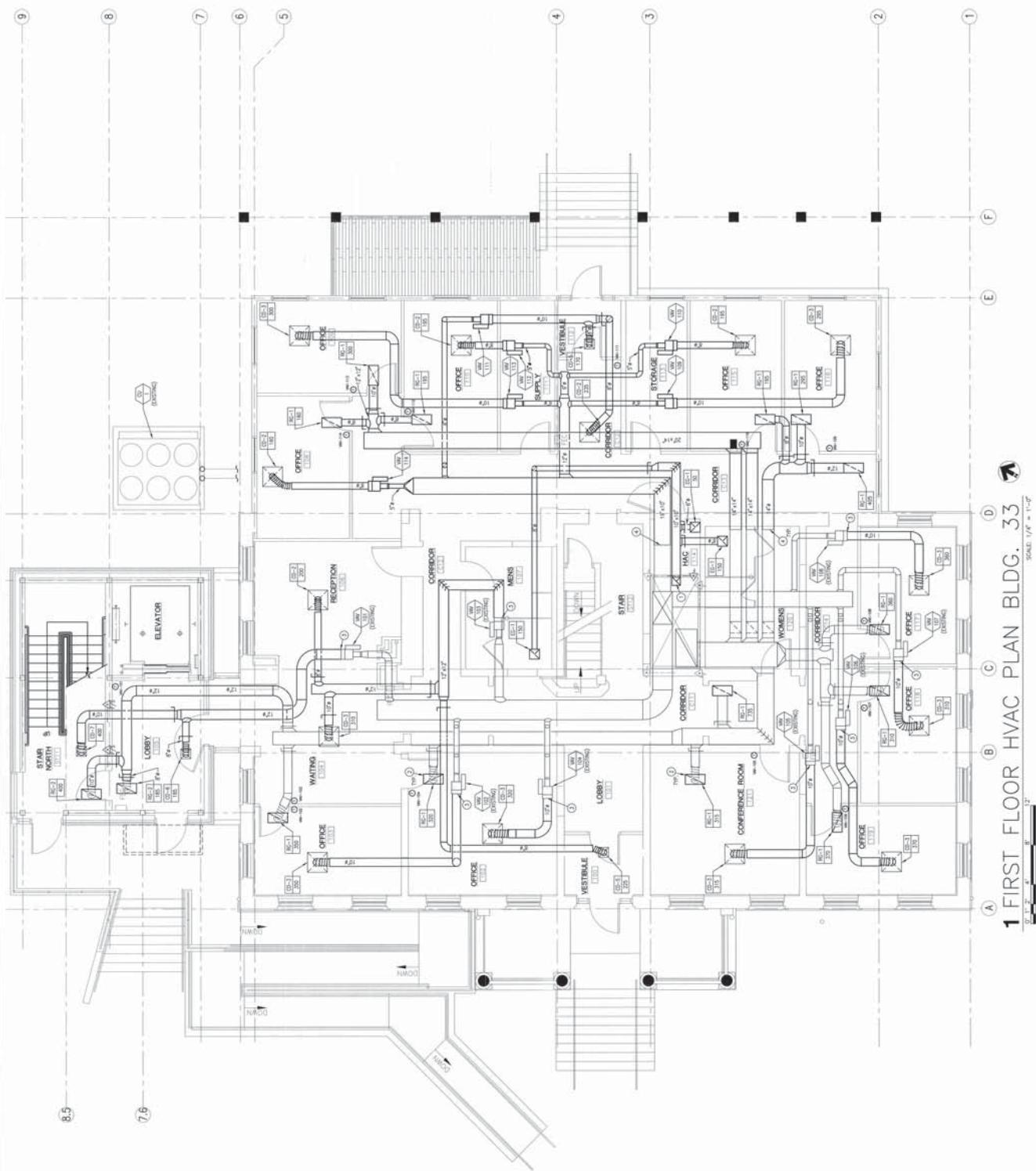


GENERAL NOTES:

- [illegible]

Ⓢ SHEET NOTES:

2. 254mm x 254mm ( $10'' \times 10''$ ) EXHAUST DUCT UP TO 47'-1 IN. ATTC. RE. M2.3 FOR CONTINUATION.
3. REMOVE EXISTING FILTER MEDIA AND EXTEND RETURN DUCT FULL SIZE TO NEW RETURN GRILLE AS SHOWN.
4. REMOVE EXISTING FILTER MEDIA AND TRANSITION AS REQUIRED FROM EXISTING W/ ROOF TO NEW LOW PRESSURE EXTRACTOR. ALL FINAL CONNECTIONS TO W/ ROOF SHALL BE FLEXIBLE.
5. EXTEND EXISTING EXTRACTOR INSTALLED IN PHASE 1 AS SHOWN.



1 FIRST FLOOR HVAC PLAN BLDG. 33

 $\frac{d}{dt} \left( \frac{1}{R^2} \right) = -\frac{2}{R^3} \frac{dR}{dt}$ 

**ROCK M. EVERTON, P.E.**  
C.R. MOORE PLAZA  
201 S. DU ST  
ROSE, GARY  
PHONE 208-343-4008 FAX 208-343-1008

CSHQA

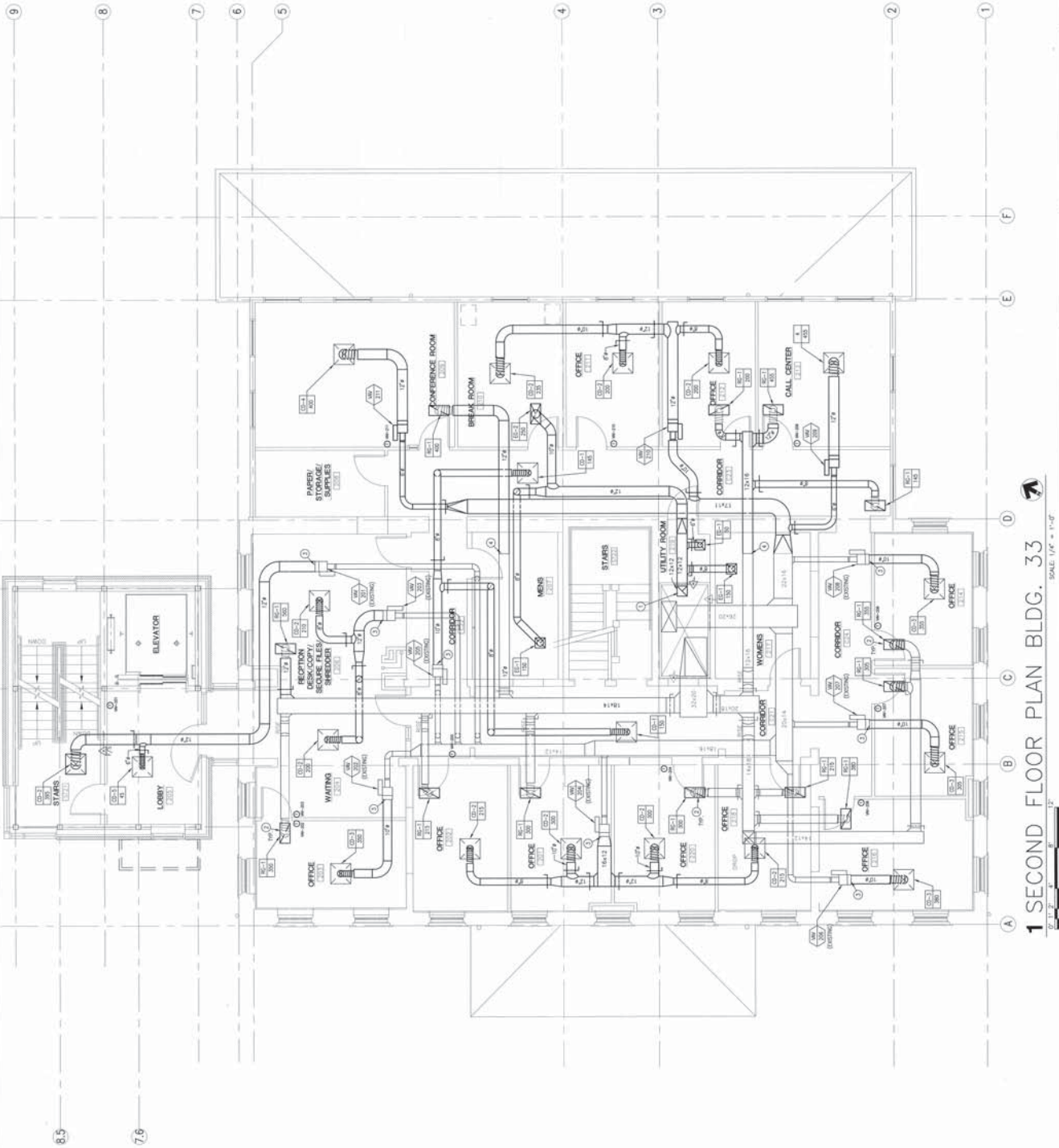
C.W. MOORE PLAZA  
250 S. 5TH ST., BOISE, ID 83702  
(208) 343-4635 FAX (208) 343-1658  
http://www.cwmoore.com

**FIRST FLOOR  
MECHANICAL PLAN**

VAMC PHASE II: BUILDING 33 RENOVATION	BUILDING NUMBER	33	CHECKED	RME	DATE	DJH
	1. PROJECT LOCATION: 2. PROJECT DESCRIPTION: 3. PROJECT SCOPE: 4. PROJECT BUDGET: 5. PROJECT SCHEDULE: 6. PROJECT RISK: 7. PROJECT STAKEHOLDERS: 8. PROJECT COMMUNICATIONS: 9. PROJECT MONITORING: 10. PROJECT EVALUATION:					

08/05/11  
SUBJECT NO.  
11-10-114  
DRAWING NO.  
M2.2





**1 SECOND FLOOR PLAN BLDG. 33**

SCALE: 1/4" = 1'-0"

- ### GENERAL NOTES:
- ROUTE DUCTWORK IN COORDINATION WITH OTHER TRADES. HANG DUCTWORK AS HIGH AS POSSIBLE AND ROUTE DUCTWORK WITH IN STRUCTURE WHERE POSSIBLE.
  - DUCTWORK SHALL BE INSTALLED IN ACCORDANCE WITH THE LOCATION OF TIGHTENING POINTS IN LIFT SPACES WITH PLUMBING CONNECTIONS.
  - DUCT SIZES INDICATED FOR CONNECTION TO EQUIPMENT MAY DIFFER FROM DUCT SIZES LISTED TO UNIT CONNECTION.
  - TEMPERATURE SENSORS SHALL BE INSTALLED AT 4' HGT. UNLESS NOTED OTHERWISE.
  - FIRE DAMPERS SHALL BE 1-1/2 HOUR RATED UNLESS OTHERWISE NOTED.
  - CONTRACTOR SHALL PROVIDE ALL NECESSARY TRANSPORTS TO AND FROM CONTACT WITH EQUIPMENT. CONTRACTOR SHALL PROVIDE ALL NECESSARY TRANSPORTS TO AND FROM EQUIPMENT. CONTRACTOR SHALL PROVIDE ALL NECESSARY TRANSPORTS TO AND FROM EQUIPMENT.
  - CONTRACTOR SHALL PROVIDE ALL NECESSARY TRANSPORTS TO AND FROM EQUIPMENT. CONTRACTOR SHALL PROVIDE ALL NECESSARY TRANSPORTS TO AND FROM EQUIPMENT.
  - CONTRACTOR SHALL PROVIDE ALL NECESSARY TRANSPORTS TO AND FROM EQUIPMENT. CONTRACTOR SHALL PROVIDE ALL NECESSARY TRANSPORTS TO AND FROM EQUIPMENT.
  - CONTRACTOR SHALL PROVIDE ALL NECESSARY TRANSPORTS TO AND FROM EQUIPMENT. CONTRACTOR SHALL PROVIDE ALL NECESSARY TRANSPORTS TO AND FROM EQUIPMENT.
  - CONTRACTOR SHALL PROVIDE ALL NECESSARY TRANSPORTS TO AND FROM EQUIPMENT. CONTRACTOR SHALL PROVIDE ALL NECESSARY TRANSPORTS TO AND FROM EQUIPMENT.
  - CONTRACTOR SHALL PROVIDE ALL NECESSARY TRANSPORTS TO AND FROM EQUIPMENT. CONTRACTOR SHALL PROVIDE ALL NECESSARY TRANSPORTS TO AND FROM EQUIPMENT.
  - CONTRACTOR SHALL PROVIDE ALL NECESSARY TRANSPORTS TO AND FROM EQUIPMENT. CONTRACTOR SHALL PROVIDE ALL NECESSARY TRANSPORTS TO AND FROM EQUIPMENT.
  - CONTRACTOR SHALL PROVIDE ALL NECESSARY TRANSPORTS TO AND FROM EQUIPMENT. CONTRACTOR SHALL PROVIDE ALL NECESSARY TRANSPORTS TO AND FROM EQUIPMENT.
  - CONTRACTOR SHALL PROVIDE ALL NECESSARY TRANSPORTS TO AND FROM EQUIPMENT. CONTRACTOR SHALL PROVIDE ALL NECESSARY TRANSPORTS TO AND FROM EQUIPMENT.
  - CONTRACTOR SHALL PROVIDE ALL NECESSARY TRANSPORTS TO AND FROM EQUIPMENT. CONTRACTOR SHALL PROVIDE ALL NECESSARY TRANSPORTS TO AND FROM EQUIPMENT.

- ### SHEET NOTES:
- 200MM x 200MM (15" x 15") EXHAUST DUCT UP IN CHASE. SEE M2.3 FOR CONTINUATION.
  - REMOVE EXISTING FILTER MEDIA AND EXTEND RETURN DUCT FULL LENGTH TO EXISTING FILTER MEDIA.
  - REMOVE EXISTING FILTER MEDIA AND EXTEND RETURN DUCT FULL LENGTH TO EXISTING FILTER MEDIA.
  - EXTEND EXISTING DUCTWORK INSTALLED IN PHASE 1 AS SHOWN.

	<b>1 SECOND FLOOR PLAN BLDG. 33</b>			<b>SECOND FLOOR MECHANICAL PLAN</b>		<b>VAMC PHASE II: BUILDING 33 RENOVATION</b>		DATE: 08/05/11
	C.W. MOORE PLAZA 200 S. 5TH ST., BOISE, ID 83702 (208) 343-4655 http://www.cshqa.com			PROJECT NO.: 531-10-114-M2.3 SHEET NO.: 531-10-114-M2.3		BUILDING NUMBER: 33		PROJECT NO.: 531-10-114
	SCALE: 1/4" = 1'-0"			DRAWN BY: JLM		CHECKED BY: JLM		PROJECT NO.: 531-10-114
	DATE: 08/05/11			DRAWN BY: JLM		CHECKED BY: JLM		PROJECT NO.: 531-10-114



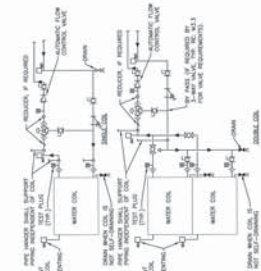




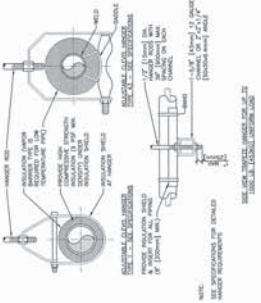








1. WATER COILS - PIPING CONNECTIONS
2. WATER COILS - PIPING CONNECTIONS
3. WATER COILS - PIPING CONNECTIONS



ITEM	DESCRIPTION	QTY	UNIT	PRICE
1	WATER COIL	1	EA	100.00
2	WATER COIL	1	EA	100.00
3	WATER COIL	1	EA	100.00
4	WATER COIL	1	EA	100.00
5	WATER COIL	1	EA	100.00
6	WATER COIL	1	EA	100.00
7	WATER COIL	1	EA	100.00
8	WATER COIL	1	EA	100.00
9	WATER COIL	1	EA	100.00
10	WATER COIL	1	EA	100.00

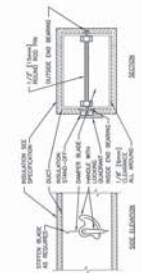
1. WATER COILS - PIPING CONNECTIONS

2. WATER COILS - PIPING CONNECTIONS

3. WATER COILS - PIPING CONNECTIONS

## PIPE HANGERS

ITEM	DESCRIPTION	QTY	UNIT	PRICE
1	PIPE HANGER	1	EA	100.00
2	PIPE HANGER	1	EA	100.00
3	PIPE HANGER	1	EA	100.00
4	PIPE HANGER	1	EA	100.00
5	PIPE HANGER	1	EA	100.00
6	PIPE HANGER	1	EA	100.00
7	PIPE HANGER	1	EA	100.00
8	PIPE HANGER	1	EA	100.00
9	PIPE HANGER	1	EA	100.00
10	PIPE HANGER	1	EA	100.00

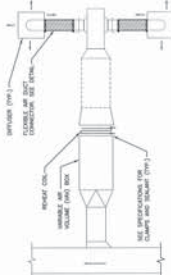


1. PIPE HANGERS
2. PIPE HANGERS
3. PIPE HANGERS

## VOLUME DAMPER DETAIL

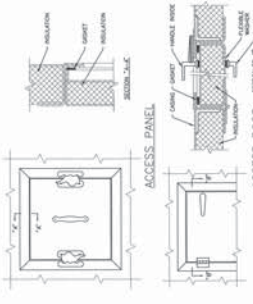
## ROUND DUCT HANGERS

## DUCT CONNECTIONS - AIR TERMINAL UNITS



1. DUCT CONNECTIONS
2. DUCT CONNECTIONS
3. DUCT CONNECTIONS

## ACCESS PANEL AND DOOR DETAIL



1. ACCESS PANEL AND DOOR DETAIL
2. ACCESS PANEL AND DOOR DETAIL
3. ACCESS PANEL AND DOOR DETAIL

## FLEXIBLE DUCT CONNECTIONS



CSHOA

200 S. 5TH ST. BOISE ID 83702  
(208) 343-4833  
http://www.csha.com

DATE: 08/05/11  
PROJECT NO: 531-10-114  
DRAWING NO: M3.1  
SHEET: 63 OF 101

VAMC PHASE II: BUILDING 33 RENOVATION  
BUILDING NUMBER: 33  
LOCATION: VAMC BOISE, IDAHO

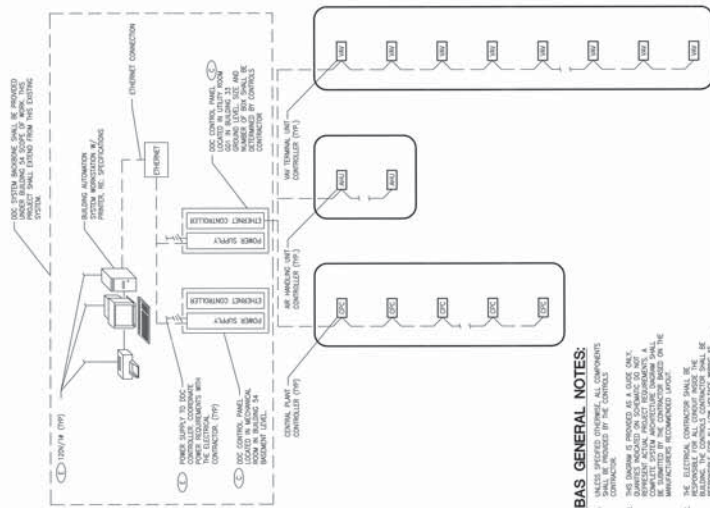
MECHANICAL DETAILS  
APPROVED: CHIEF OF FACILITY MANAGEMENT SERVICE  
APPROVED: MEDICAL CENTER DIRECTOR

DATE: 08/05/11  
PROJECT NO: 531-10-114  
DRAWING NO: M3.1  
SHEET: 63 OF 101

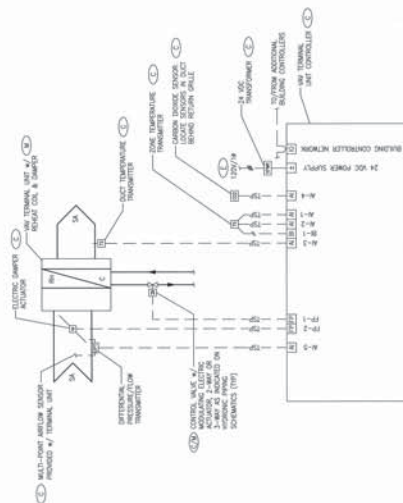
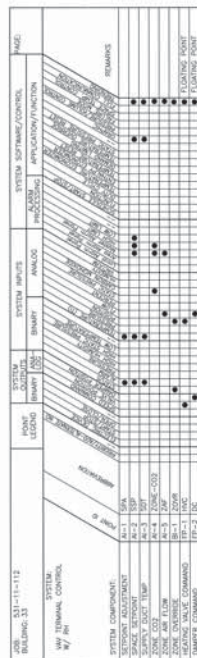








BUILDING AUTOMATIC SYSTEM ARCHITECTURE DIAGRAM



VAV TERMINAL WITH REHEAT CONTROL SCHEMATIC &amp; POINTS LIST





## PLUMBING FIXTURE SCHEDULE

FEATURE	ITEM	MODEL	MFR	CONNECTIONS	REMARKS				
	ITEM	MODEL	MFR	CONC. BS	W. MAX BS	V. MAX BS	W. MAX BS	V. MAX BS	
W-1	ELECTRIC AUTO STOP	12712C	ELAP	127 (1/2)	-	-	38.1 (1-1/2)	38.1 (1-1/2)	WALL-MOUNTED SHOWER FURNISH WITH STAINLESS STEEL TOP AND 23.1 (1/2) IN DIA. DRAILED WATER CONTROL. FURNISH WITH, WASHING WHEEL, AND TUBULE SAFETY BUMPER HEAD. ELECTRICAL UNO 4 T/4 AT 150 VOLTS 5.500
W-2	ELECTRIC AUTO STOP	4039-3282	J.A. SMITH	-	-	-	101.6 (4)	-	DOSE GATE WITH CLAMPING AND ROUND ADJUSTABLE. COATED STAINLESS STEEL BRIDGE TOP FOR VENTILATION APPLICATIONS.
W-3	ELECTRIC AUTO STOP	4039-4050-48	J.A. SMITH	-	-	-	343 (2)	38.1 (1-1/2)	CASE IRON BODY WITH ADJUSTABLE STAINLESS HEAD. FURNISH WITH ROUND TOP, 12.7 mm (1/2) IN TRAP PIPER CONNECTION, AND NICOL BRONZE STAINER.
W-4	FREEZELITE (ICE BARR)	4000-0950	MODEL 45	-	-	-	-	-	SHOWER PRINCE, CLOSE AT FASTENED, SELF-SEALING WITH VENTILATION, VACUUM BREAKER
W-5	FREEZELITE (ICE BARR)	4000-0950	MODEL 45	-	-	-	-	-	SHOWER PRINCE, CLOSE AT FASTENED, SELF-SEALING WITH VENTILATION, VACUUM BREAKER
W-6	FREEZELITE (ICE BARR)	4000-0950	MODEL 45	-	-	-	-	-	SHOWER PRINCE, CLOSE AT FASTENED, SELF-SEALING WITH VENTILATION, VACUUM BREAKER
W-7	FREEZELITE (ICE BARR)	4000-0950	MODEL 45	-	-	-	-	-	SHOWER PRINCE, CLOSE AT FASTENED, SELF-SEALING WITH VENTILATION, VACUUM BREAKER
W-8	FREEZELITE (ICE BARR)	4000-0950	MODEL 45	-	-	-	-	-	SHOWER PRINCE, CLOSE AT FASTENED, SELF-SEALING WITH VENTILATION, VACUUM BREAKER
W-9	FREEZELITE (ICE BARR)	4000-0950	MODEL 45	-	-	-	-	-	SHOWER PRINCE, CLOSE AT FASTENED, SELF-SEALING WITH VENTILATION, VACUUM BREAKER
W-10	FREEZELITE (ICE BARR)	4000-0950	MODEL 45	-	-	-	-	-	SHOWER PRINCE, CLOSE AT FASTENED, SELF-SEALING WITH VENTILATION, VACUUM BREAKER
W-11	FREEZELITE (ICE BARR)	4000-0950	MODEL 45	-	-	-	-	-	SHOWER PRINCE, CLOSE AT FASTENED, SELF-SEALING WITH VENTILATION, VACUUM BREAKER
W-12	FREEZELITE (ICE BARR)	4000-0950	MODEL 45	-	-	-	-	-	SHOWER PRINCE, CLOSE AT FASTENED, SELF-SEALING WITH VENTILATION, VACUUM BREAKER
W-13	FREEZELITE (ICE BARR)	4000-0950	MODEL 45	-	-	-	-	-	SHOWER PRINCE, CLOSE AT FASTENED, SELF-SEALING WITH VENTILATION, VACUUM BREAKER
W-14	FREEZELITE (ICE BARR)	4000-0950	MODEL 45	-	-	-	-	-	SHOWER PRINCE, CLOSE AT FASTENED, SELF-SEALING WITH VENTILATION, VACUUM BREAKER
W-15	FREEZELITE (ICE BARR)	4000-0950	MODEL 45	-	-	-	-	-	SHOWER PRINCE, CLOSE AT FASTENED, SELF-SEALING WITH VENTILATION, VACUUM BREAKER
W-16	FREEZELITE (ICE BARR)	4000-0950	MODEL 45	-	-	-	-	-	SHOWER PRINCE, CLOSE AT FASTENED, SELF-SEALING WITH VENTILATION, VACUUM BREAKER
W-17	FREEZELITE (ICE BARR)	4000-0950	MODEL 45	-	-	-	-	-	SHOWER PRINCE, CLOSE AT FASTENED, SELF-SEALING WITH VENTILATION, VACUUM BREAKER
W-18	FREEZELITE (ICE BARR)	4000-0950	MODEL 45	-	-	-	-	-	SHOWER PRINCE, CLOSE AT FASTENED, SELF-SEALING WITH VENTILATION, VACUUM BREAKER
W-19	FREEZELITE (ICE BARR)	4000-0950	MODEL 45	-	-	-	-	-	SHOWER PRINCE, CLOSE AT FASTENED, SELF-SEALING WITH VENTILATION, VACUUM BREAKER
W-20	FREEZELITE (ICE BARR)	4000-0950	MODEL 45	-	-	-	-	-	SHOWER PRINCE, CLOSE AT FASTENED, SELF-SEALING WITH VENTILATION, VACUUM BREAKER
W-21	FREEZELITE (ICE BARR)	4000-0950	MODEL 45	-	-	-	-	-	SHOWER PRINCE, CLOSE AT FASTENED, SELF-SEALING WITH VENTILATION, VACUUM BREAKER
W-22	FREEZELITE (ICE BARR)	4000-0950	MODEL 45	-	-	-	-	-	SHOWER PRINCE, CLOSE AT FASTENED, SELF-SEALING WITH VENTILATION, VACUUM BREAKER
W-23	FREEZELITE (ICE BARR)	4000-0950	MODEL 45	-	-	-	-	-	SHOWER PRINCE, CLOSE AT FASTENED, SELF-SEALING WITH VENTILATION, VACUUM BREAKER
W-24	FREEZELITE (ICE BARR)	4000-0950	MODEL 45	-	-	-	-	-	SHOWER PRINCE, CLOSE AT FASTENED, SELF-SEALING WITH VENTILATION, VACUUM BREAKER
W-25	FREEZELITE (ICE BARR)	4000-0950	MODEL 45	-	-	-	-	-	SHOWER PRINCE, CLOSE AT FASTENED, SELF-SEALING WITH VENTILATION, VACUUM BREAKER
W-26	FREEZELITE (ICE BARR)	4000-0950	MODEL 45	-	-	-	-	-	SHOWER PRINCE, CLOSE AT FASTENED, SELF-SEALING WITH VENTILATION, VACUUM BREAKER
W-27	FREEZELITE (ICE BARR)	4000-0950	MODEL 45	-	-	-	-	-	SHOWER PRINCE, CLOSE AT FASTENED, SELF-SEALING WITH VENTILATION, VACUUM BREAKER
W-28	FREEZELITE (ICE BARR)	4000-0950	MODEL 45	-	-	-	-	-	SHOWER PRINCE, CLOSE AT FASTENED, SELF-SEALING WITH VENTILATION, VACUUM BREAKER
W-29	FREEZELITE (ICE BARR)	4000-0950	MODEL 45	-	-	-	-	-	SHOWER PRINCE, CLOSE AT FASTENED, SELF-SEALING WITH VENTILATION, VACUUM BREAKER
W-30	FREEZELITE (ICE BARR)	4000-0950	MODEL 45	-	-	-	-	-	SHOWER PRINCE, CLOSE AT FASTENED, SELF-SEALING WITH VENTILATION, VACUUM BREAKER
W-31	FREEZELITE (ICE BARR)	4000-0950	MODEL 45	-	-	-	-	-	SHOWER PRINCE, CLOSE AT FASTENED, SELF-SEALING WITH VENTILATION, VACUUM BREAKER
W-32	FREEZELITE (ICE BARR)	4000-0950	MODEL 45	-	-	-	-	-	SHOWER PRINCE, CLOSE AT FASTENED, SELF-SEALING WITH VENTILATION, VACUUM BREAKER
W-33	FREEZELITE (ICE BARR)	4000-0950	MODEL 45	-	-	-	-	-	SHOWER PRINCE, CLOSE AT FASTENED, SELF-SEALING WITH VENTILATION, VACUUM BREAKER
W-34	FREEZELITE (ICE BARR)	4000-0950	MODEL 45	-	-	-	-	-	SHOWER PRINCE, CLOSE AT FASTENED, SELF-SEALING WITH VENTILATION, VACUUM BREAKER
W-35	FREEZELITE (ICE BARR)	4000-0950	MODEL 45	-	-	-	-	-	SHOWER PRINCE, CLOSE AT FASTENED, SELF-SEALING WITH VENTILATION, VACUUM BREAKER
W-36	FREEZELITE (ICE BARR)	4000-0950	MODEL 45	-	-	-	-	-	SHOWER PRINCE, CLOSE AT FASTENED, SELF-SEALING WITH VENTILATION, VACUUM BREAKER
W-37	FREEZELITE (ICE BARR)	4000-0950	MODEL 45	-	-	-	-	-	SHOWER PRINCE, CLOSE AT FASTENED, SELF-SEALING WITH VENTILATION, VACUUM BREAKER
W-38	FREEZELITE (ICE BARR)	4000-0950	MODEL 45	-	-	-	-	-	SHOWER PRINCE, CLOSE AT FASTENED, SELF-SEALING WITH VENTILATION, VACUUM BREAKER
W-39	FREEZELITE (ICE BARR)	4000-0950	MODEL 45	-	-	-	-	-	SHOWER PRINCE, CLOSE AT FASTENED, SELF-SEALING WITH VENTILATION, VACUUM BREAKER
W-40	FREEZELITE (ICE BARR)	4000-0950	MODEL 45	-	-	-	-	-	SHOWER PRINCE, CLOSE AT FASTENED, SELF-SEALING WITH VENTILATION, VACUUM BREAKER
W-41	FREEZELITE (ICE BARR)	4000-0950	MODEL 45	-	-	-	-	-	SHOWER PRINCE, CLOSE AT FASTENED, SELF-SEALING WITH VENTILATION, VACUUM BREAKER
W-42	FREEZELITE (ICE BARR)	4000-0950	MODEL 45	-	-	-	-	-	SHOWER PRINCE, CLOSE AT FASTENED, SELF-SEALING WITH VENTILATION, VACUUM BREAKER
W-43	FREEZELITE (ICE BARR)	4000-0950	MODEL 45	-	-	-	-	-	SHOWER PRINCE, CLOSE AT FASTENED, SELF-SEALING WITH VENTILATION, VACUUM BREAKER
W-44	FREEZELITE (ICE BARR)	4000-0950	MODEL 45	-	-	-	-	-	SHOWER PRINCE, CLOSE AT FASTENED, SELF-SEALING WITH VENTILATION, VACUUM BREAKER
W-45	FREEZELITE (ICE BARR)	4000-0950	MODEL 45	-	-	-	-	-	SHOWER PRINCE, CLOSE AT FASTENED, SELF-SEALING WITH VENTILATION, VACUUM BREAKER
W-46	FREEZELITE (ICE BARR)	4000-0950	MODEL 45	-	-	-	-	-	SHOWER PRINCE, CLOSE AT FASTENED, SELF-SEALING WITH VENTILATION, VACUUM BREAKER
W-47	FREEZELITE (ICE BARR)	4000-0950	MODEL 45	-	-	-	-	-	SHOWER PRINCE, CLOSE AT FASTENED, SELF-SEALING WITH VENTILATION, VACUUM BREAKER
W-48	FREEZELITE (ICE BARR)	4000-0950	MODEL 45	-	-	-	-	-	SHOWER PRINCE, CLOSE AT FASTENED, SELF-SEALING WITH VENTILATION, VACUUM BREAKER
W-49	FREEZELITE (ICE BARR)	4000-0950	MODEL 45	-	-	-	-	-	SHOWER PRINCE, CLOSE AT FASTENED, SELF-SEALING WITH VENTILATION, VACUUM BREAKER
W-50	FREEZELITE (ICE BARR)	4000-0950	MODEL 45	-	-	-	-	-	SHOWER PRINCE, CLOSE AT FASTENED, SELF-SEALING WITH VENTILATION, VACUUM BREAKER
W-51	FREEZELITE (ICE BARR)	4000-0950	MODEL 45	-	-	-	-	-	SHOWER PRINCE, CLOSE AT FASTENED, SELF-SEALING WITH VENTILATION, VACUUM BREAKER
W-52	FREEZELITE (ICE BARR)	4000-0950	MODEL 45	-	-	-	-	-	SHOWER PRINCE, CLOSE AT FASTENED, SELF-SEALING WITH VENTILATION, VACUUM BREAKER
W-53	FREEZELITE (ICE BARR)	4000-0950	MODEL 45	-	-	-	-	-	SHOWER PRINCE, CLOSE AT FASTENED, SELF-SEALING WITH VENTILATION, VACUUM BREAKER
W-54	FREEZELITE (ICE BARR)	4000-0950	MODEL 45	-	-	-	-	-	SHOWER PRINCE, CLOSE AT FASTENED, SELF-SEALING WITH VENTILATION, VACUUM BREAKER
W-55	FREEZELITE (ICE BARR)	4000-0950	MODEL 45	-	-	-	-	-	SHOWER PRINCE, CLOSE AT FASTENED, SELF-SEALING WITH VENTILATION, VACUUM BREAKER
W-56	FREEZELITE (ICE BARR)	4000-0950	MODEL 45	-	-	-	-	-	SHOWER PRINCE, CLOSE AT FASTENED, SELF-SEALING WITH VENTILATION, VACUUM BREAKER
W-57	FREEZELITE (ICE BARR)	4000-0950	MODEL 45	-	-	-	-	-	SHOWER PRINCE, CLOSE AT FASTENED, SELF-SEALING WITH VENTILATION, VACUUM BREAKER
W-58	FREEZELITE (ICE BARR)	4000-0950	MODEL 45	-	-	-	-	-	SHOWER PRINCE, CLOSE AT FASTENED, SELF-SEALING WITH VENTILATION, VACUUM BREAKER
W-59	FREEZELITE (ICE BARR)	4000-0950	MODEL 45	-	-	-	-	-	SHOWER PRINCE, CLOSE AT FASTENED, SELF-SEALING WITH VENTILATION, VACUUM BREAKER
W-60	FREEZELITE (ICE BARR)	4000-0950	MODEL 45	-	-	-	-	-	SHOWER PRINCE, CLOSE AT FASTENED, SELF-SEALING WITH VENTILATION, VACUUM BREAKER
W-61	FREEZELITE (ICE BARR)	4000-0950	MODEL 45	-	-	-	-	-	SHOWER PRINCE, CLOSE AT FASTENED, SELF-SEALING WITH VENTILATION, VACUUM BREAKER
W-62	FREEZELITE (ICE BARR)	4000-0950	MODEL 45	-	-	-	-	-	SHOWER PRINCE, CLOSE AT FASTENED, SELF-SEALING WITH VENTILATION, VACUUM BREAKER
W-63	FREEZELITE (ICE BARR)	4000-0950	MODEL 45	-	-	-	-	-	SHOWER PRINCE, CLOSE AT FASTENED, SELF-SEALING WITH VENTILATION, VACUUM BREAKER
W-64	FREEZELITE (ICE BARR)	4000-0950	MODEL 45	-	-	-	-	-	SHOWER PRINCE, CLOSE AT FASTENED, SELF-SEALING WITH VENTILATION, VACUUM BREAKER
W-65	FREEZELITE (ICE BARR)	4000-0950	MODEL 45	-	-	-	-	-	SHOWER PRINCE, CLOSE AT FASTENED, SELF-SEALING WITH VENTILATION, VACUUM BREAKER
W-66	FREEZELITE (ICE BARR)	4000-0950	MODEL 45	-	-	-	-	-	SHOWER PRINCE, CLOSE AT FASTENED, SELF-SEALING WITH VENTILATION, VACUUM BREAKER
W-67	FREEZELITE (ICE BARR)	4000-0950	MODEL 45	-	-	-	-	-	SHOWER PRINCE, CLOSE AT FASTENED, SELF-SEALING WITH VENTILATION, VACUUM BREAKER
W-68	FREEZELITE (ICE BARR)	4000-0950	MODEL 45	-	-	-	-	-	SHOWER PRINCE, CLOSE AT FASTENED, SELF-SEALING WITH VENTILATION, VACUUM BREAKER
W-69	FREEZELITE (ICE BARR)	4000-0950	MODEL 45	-	-	-	-	-	SHOWER PRINCE, CLOSE AT FASTENED, SELF-SEALING WITH VENTILATION, VACUUM BREAKER
W-70	FREEZELITE (ICE BARR)	4000-0950	MODEL 45	-	-	-	-	-	SHOWER PRINCE, CLOSE AT FASTENED, SELF-SEALING WITH VENTILATION, VACUUM BREAKER
W-71	FREEZELITE (ICE BARR)	4000-0950	MODEL 45	-	-	-	-	-	SHOWER PRINCE, CLOSE AT FASTENED, SELF-SEALING WITH VENTILATION, VACUUM BREAKER
W-72	FREEZELITE (ICE BARR)	4000-0950	MODEL 45	-	-	-	-	-	SHOWER PRINCE, CLOSE AT FASTENED, SELF-SEALING WITH VENTILATION, VACUUM BREAKER
W-73	FREEZELITE (ICE BARR)	4000-0950	MODEL 45	-	-	-	-	-	SHOWER PRINCE, CLOSE AT FASTENED, SELF-SEALING WITH VENTILATION, VACUUM BREAKER
W-74	FREEZELITE (ICE BARR)	4000-0950	MODEL 45	-	-	-	-	-	SHOWER PRINCE, CLOSE AT FASTENED, SELF-SEALING WITH VENTILATION, VACUUM BREAKER
W-75	FREEZELITE (ICE BARR)	4000-0950	MODEL 45	-	-	-	-	-	SHOWER PRINCE, CLOSE AT FASTENED, SELF-SEALING WITH VENTILATION, VACUUM BREAKER
W-76	FREEZELITE (ICE BARR)	4000-0950	MODEL 45	-	-	-	-	-	SHOWER PRINCE, CLOSE AT FASTENED, SELF-SEALING WITH VENTILATION, VACUUM BREAKER
W-77	FREEZELITE (ICE BARR)	4000-0950	MODEL 45	-	-	-	-	-	SHOWER PRINCE, CLOSE AT FASTENED, SELF-SEALING WITH VENTILATION, VACUUM BREAKER
W-78	FREEZELITE (ICE BARR)	4000-0950	MODEL 45	-	-	-	-	-	SHOWER PRINCE, CLOSE AT FASTENED, SELF-SEALING WITH VENTILATION, VACUUM BREAKER
W-79	FREEZELITE (ICE BARR)	4000-0950	MODEL 45	-	-	-	-	-	SHOWER PRINCE, CLOSE AT FASTENED, SELF-SEALING WITH VENTILATION, VACUUM BREAKER
W-80	FREEZELITE (ICE BARR)	4000-0950	MODEL 45	-	-	-	-	-	SHOWER PRINCE, CLOSE AT FASTENED, SELF-SEALING WITH VENTILATION, VACUUM BREAKER
W-81	FREEZELITE (ICE BARR)	4000-0950	MODEL 45	-	-	-	-	-	SHOWER PRINCE, CLOSE AT FASTENED, SELF-SEALING WITH VENTILATION, VACUUM BREAKER
W-82	FREEZELITE (ICE BARR)	4000-0950	MODEL 45	-	-	-	-	-	SHOWER PRINCE, CLOSE AT FASTENED, SELF-SEALING WITH VENTILATION, VACUUM BREAKER
W-83	FREEZELITE (ICE BARR)	4000-0950	MODEL 45	-	-	-	-	-	SHOWER PRINCE, CLOSE AT FASTENED, SELF-SEALING WITH VENTILATION, VACUUM BREAKER
W-84	FREEZELITE (ICE BARR)	4000-0950	MODEL 45	-	-	-	-	-	SHOWER PRINCE, CLOSE AT FASTENED, SELF-SEALING WITH VENTILATION, VACUUM BREAKER
W-85	FREEZELITE (ICE BARR)	4000-0950	MODEL 45	-	-	-	-	-	SHOWER PRINCE, CLOSE AT FASTENED, SELF-SEALING WITH VENTILATION, VACUUM BREAKER
W-86	FREEZELITE (ICE BARR)	4000-0950	MODEL 45	-	-	-	-	-	SHOWER PRINCE, CLOSE AT FASTENED, SELF-SEALING WITH VENTILATION, VACUUM BREAKER
W-87	FREEZELITE (ICE BARR)	4000-0950	MODEL 45	-	-	-	-	-	SHOWER PRINCE, CLOSE AT FASTENED, SELF-SEALING WITH VENTILATION, VACUUM BREAKER
W-88	FREEZELITE (ICE BARR)	4000-0950	MODEL 45	-	-	-	-	-	SHOWER PRINCE, CLOSE AT FASTENED, SELF-SEALING WITH VENTILATION, VACUUM BREAKER
W-89	FREEZELITE (ICE BARR)	4000-0950	MODEL 45	-	-	-	-	-	SHOWER PRINCE, CLOSE AT FASTENED, SELF-SEALING WITH VENTILATION, VACUUM BREAKER
W-90	FREEZELITE (ICE BARR)	4000-0950	MODEL 45	-	-	-	-	-	SHOWER PRINCE, CLOSE AT FASTENED, SELF-SEALING WITH VENTILATION, VACUUM BREAKER
W-91	FREEZELITE (ICE BARR)	4000-0950	MODEL 45	-	-	-	-	-	SHOWER PRINCE, CLOSE AT FASTENED, SELF-SEALING WITH VENTILATION, VACUUM BREAKER
W-92	FREEZELITE (ICE BARR)	4000-0950	MODEL 45	-	-	-	-	-	SHOWER PRINCE, CLOSE AT FASTENED, SELF-SEALING WITH VENTILATION, VACUUM BREAKER
W-93	FREEZELITE (ICE BARR)	4000-0950	MODEL 45	-	-	-	-	-	SHOWER PRINCE, CLOSE AT FASTENED, SELF-SEALING WITH VENTILATION, VACUUM BREAKER
W-94	FREEZELITE (ICE BARR)	4000-0950	MODEL 45	-	-	-	-	-	SHOWER PRINCE, CLOSE AT FASTENED, SELF-SEALING WITH VENTILATION, VACUUM BREAKER
W-95	FREEZELITE (ICE BARR)	4000-0950	MODEL 45	-	-	-	-	-	SHOWER PRINCE, CLOSE AT FASTENED, SELF-SEALING WITH VENTILATION, VACUUM BREAKER
W-96	FREEZELITE (ICE BARR)	4000-0950	MODEL 45	-	-	-	-	-	SHOWER PRINCE, CLOSE AT FASTENED, SELF-SEALING WITH VENTILATION, VACUUM BREAKER
W-97	FREEZELITE (ICE BARR)	4000-0950	MODEL 45	-	-	-	-	-	SHOWER PRINCE, CLOSE AT FASTENED, SELF-SEALING WITH VENTILATION, VACUUM BREAKER
W-98	FREEZELITE (ICE BARR)	4000-0950	MODEL 45	-	-	-	-	-	SHOWER PRINCE, CLOSE AT FASTENED, SELF-SEALING WITH VENTILATION, VACUUM BREAKER
W-99	FREEZELITE (ICE BARR)	4000-0950	MODEL 45	-	-	-	-	-	SHOWER PRINCE, CLOSE AT FASTENED, SELF-SEALING WITH VENTILATION, VACUUM BREAKER
W-100	FREEZELITE (ICE BARR)	4000-0950	MODEL 45	-	-	-	-	-	SHOWER PRINCE, CLOSE AT FASTENED, SELF-SEALING WITH VENTILATION, VACUUM BREAKER

## DOMESTIC WATER HEATER SCHEDULE

REFERENCE		ITEM		MPN	MODEL	TYPE	LOCATION	NETL REFERENCE	PLT TYPE	STORAGE (LBS)	MPN	SPRINKLER %	REGULATED GAS (LBS)	ELECTRICAL VOLTAGE	CONNECTIONS	OPERATING WT (LBS)	REMARKS
1	WATER	WATER	250-0-2	WATER	250-0-2	CONCRETE, ELEVATION	REFRIGERATION	251-1-2	ELECTRIC	100 (20)	18.0	40 TO 50	214 (53)	22,200	3	317 (667)	1
<p>1. SET OPERATING TEMPERATURE AT 4°C (39°F)</p> <p>2. INITIAL WITH REFRIGERANT ON 10% AND 100% CONNECTIONS</p>																	

### EXPANSION TANK SCHEDULE

REFERENCE				PERFORMANCE					
MARK	MPN	MODEL	SERIES	LOCATION	DETAIL REFERENCE	TYPE	ASST. FACTOR	ON WEIGHT TO DATA	REMARKS
REC-1	AP002	13-12	2980-1	GEORGETOWN, G.D.	731-18	2980-18	1.45	0.17	N.S. [20]
TYPICAL REQUIREMENTS									
A. RE DESIGN 22 SECTION ELECTRIC DYNAMIC BATH EXHAUST FOR ADDITIONAL SPECIFICATIONS									
① REMARKS: 1. PROVIDE INSTANT BATTERY SECURED TO WALL WITH STRAP AROUND TANK.									

## DOMESTIC WATER PUMP SCHEDULE

[illegible]

[illegible]

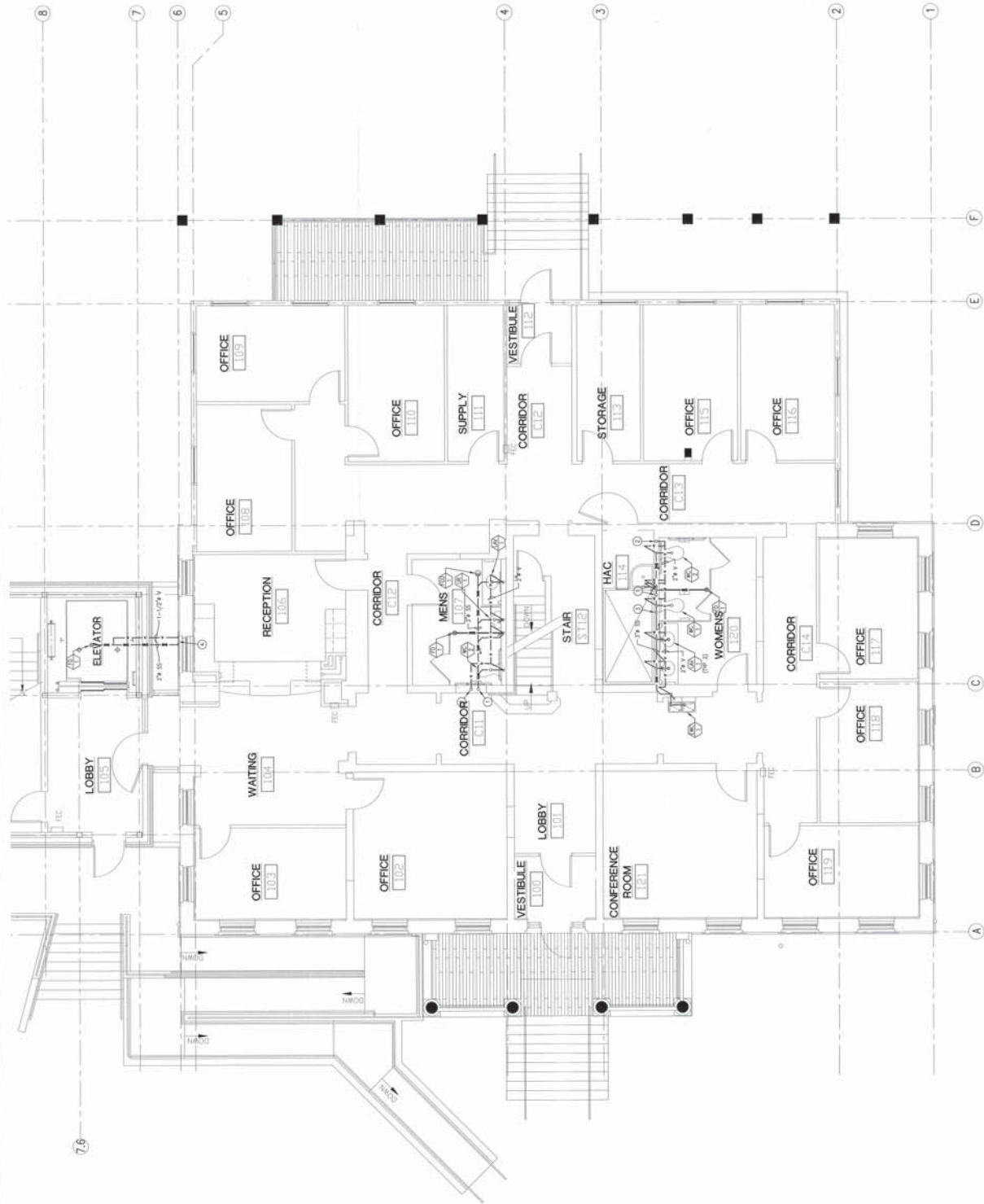
**ROUTE #2:** IS STUDY AGAINST WALL AND CONNECT TO STUB OUT PROVIDED ABOVE THE STRUCTURE EXISTENCE.

**POTENTIAL WASTE PIPING TYPICAL TO CEILING:**

- \*#9 SS DOWN FROM FIRST FLOOR, RE: P2-1-F FOR CONNECTION.
- EXISTING #4'S SS PIPES INSTALLED UNDER THE UTILITIES EXPOSITION.
- ROUTE PIPE DOWN ALONGST WALL TO BELOW MECHANICAL DWG., EFFECT HEADWALL, NOT TO CORNER
- #7'S SS AND 1-1/2"X8" SMOOTH CHANNEL WALL, RE: P2-1-F FOR CONNECTION.
- ROUTE 1-1/2"X8" UP AND HOLD TIGHT TO CEILING STRUCTURE.

[illegible]

**1**FIRST FLOOR WASTE & VENT PLAN



GENERAL NOTES:

© SHEET NOTES:

1. 4" SS DOWN FROM SECOND FLOOR TO FIRST FLOOR. RE: P2-1-1 AND P2-3-1 FOR CONTINUATION.
2. 3" V UP TO SECOND FLOOR. RE: P2-3-1 FOR CONTINUATION.
3. ABOUT 2" SS FROM LAMINATES AND ELECTRIC WATER COOLER IN WALL AND DROP DOWN BELOW FLOOR TO GROUND LEVEL. CLING SPACE CORNER/ WALL PENETRATION TOGETHER WITH THE WALL CONTINUATION.
4. 3" SS AND 1-1/2" V THROUGH FOUNDATION WALL. RE: P2-1-1 FOR CONTINUATION.



7

9

5

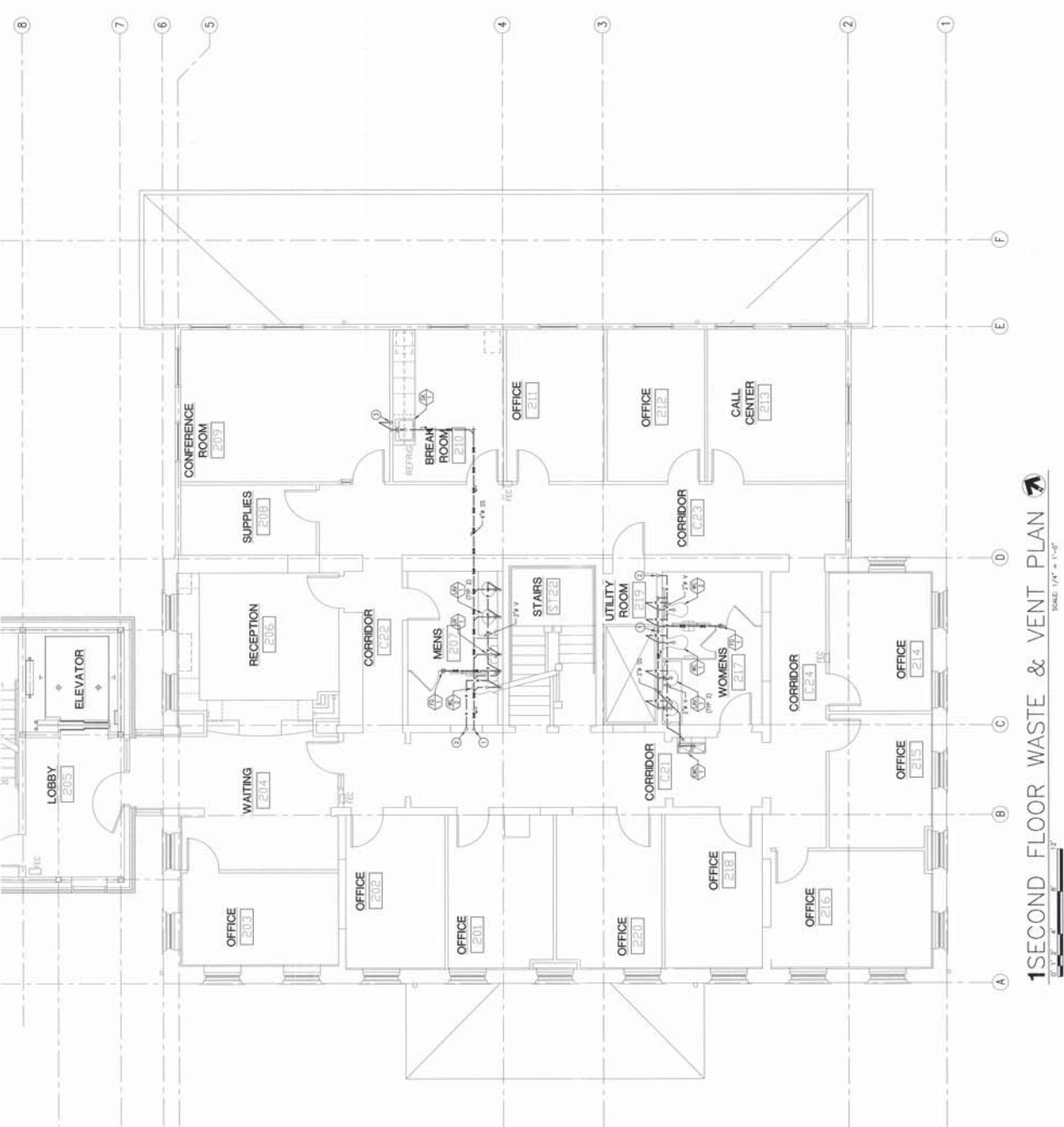
5

2

1







## 1 SECOND FLOOR WASTE & VENT PLAN

SCALE: 1/4" = 1'-0"

## GENERAL NOTES:

- [illegible]

# SHEET NOTES:

1. 4'9" SS DOWN TO FIRST FLOOR. RE: P2.2-1 FOR CONTINUATION.
2. 2'9" V UP FROM FIRST FLOOR TO THIRD FLOOR. RE: P2.2-1 AND P2.4-1 FOR CONTINUATION.
3. 2'9" V UP TO THIRD FLOOR. RE: P2.4-1 FOR CONTINUATION.



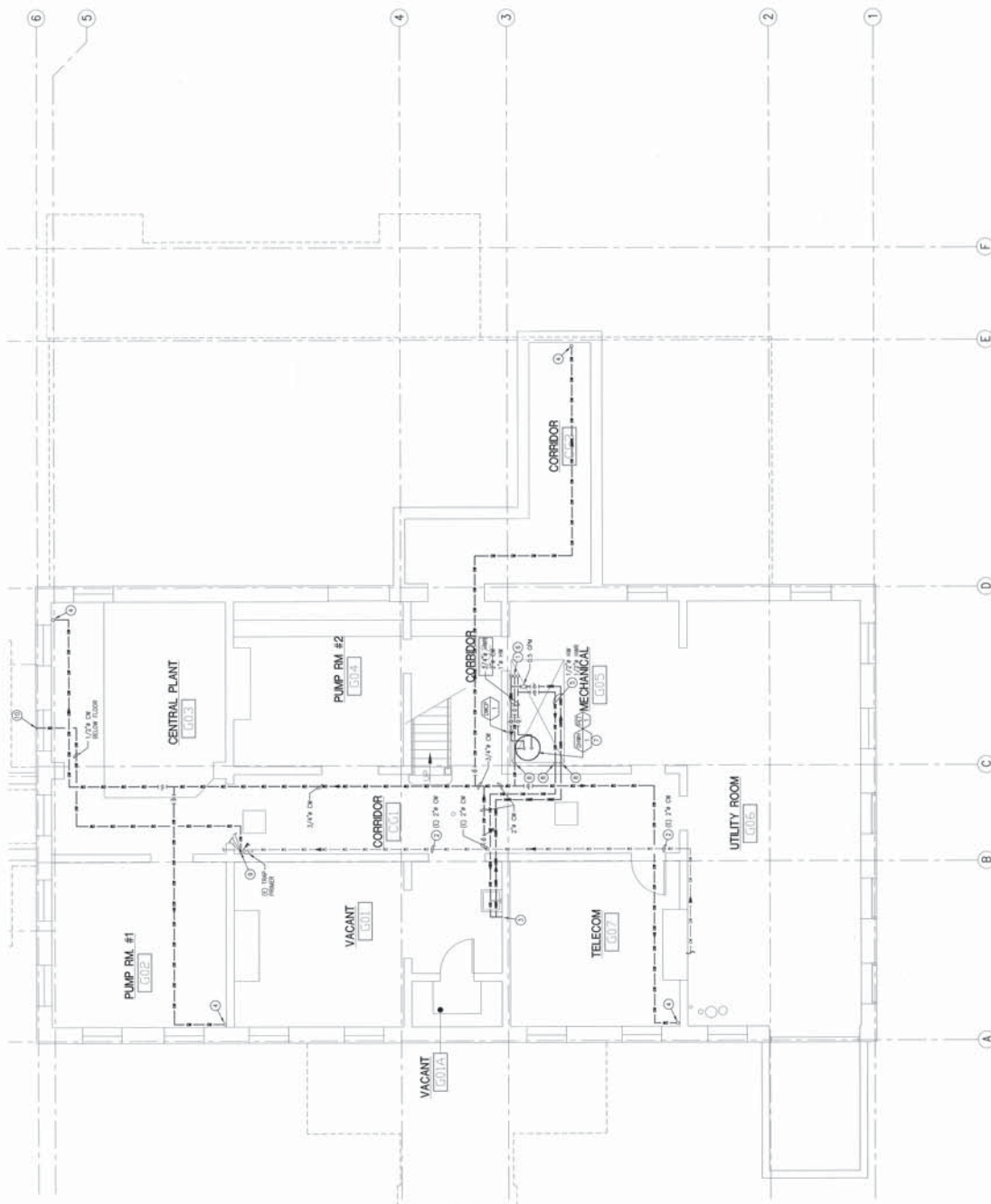
GENERAL NOTES:

- [illegible]

Wavelength (nm)	Wavelength (nm)
12.7 nm	1/2 in
19.1 nm	3/4 in
25.4 nm	1 in
31.8 nm	-1/4 in
38.1 nm	-1/2 in
50.8 nm	2 in
63.5 nm	2-1/2 in
76.2 nm	3 in

Ⓢ SHEET NOTES:

- 1/4" MIN. 7" CH. AND 7" MIN UP TO FIRST FLOOR. RE: 21-61-1 FOR  
EXISTING 7" CH. OR PILING UNDER THE EXISTING EXTERIOR PRODUCT.  
EXISTING 1774 OR DOWN EXISTING SINK.  
CONNECT 1774 UP TO EXISTING SINK.  
1/4" CH UP TO FIRST FLOOR. RE: 21-61-1 FOR CONNECTION.  
INSTALL ALL WITH PILING TIE TO CEILING.  
FLOOR TIE DOWN TO CEILING.  
RE: 21-61-1 FOR THE PILING STOPPING THROUGH WALL DETAILS  
FLOOR TIE DOWN TO CEILING.  
RE: 21-61-1 FOR EXISTING EXTERIOR PILING DETAIL.  
SINK PILING DOWN TO 6" MIN. 4" CH. AND SINK UNDER EXISTING IN MECHANICAL  
SPACE.  
EXISTING 1774 OR DOWN EXISTING TRAP FINISHES UNDER SINK BELOW  
FLOOR.  
SINK 1774 OR DOWN EXISTING TRAP FINISHES UNDER SINK BELOW  
FLOOR.



# GROUND LEVEL WATER & GAS PLAN

CALL: 1/4" = 1'-0"



and

RICK M. EVERTON, P.A.  
 C.W. MOORE PLAZA  
 200 S. 10TH ST.  
 SUITE 2000  
 AUSTIN, TEXAS 78701

C.W. MOORE PLAZA  
250 S. 5TH ST. BOISE, ID 83702  
(208) 343-6635 FAX (208) 343-1858  
<http://www.cathgas.com>

CSHQA

VAMC  
PHASE II: BUILDING 33

RENOVATION		CHECKED	EXAMIN
BUILDING NUMBER			

LOCATION	RME	NUJ
VAMC BOISE IDAHO	33	

### GROUND LEVEL WATER & GAS PLAN

CHIEF OF FACILITY MANAGEMENT SERVICE

PROVIDENCE MEDICAL CENTER DIRECTOR

531-10-114\_P2.5

531-10-114\_xTBLK  
531-10-114\_xGRND FLR

**W. M. EVERSON, P.E.**  
10 MOORE PLAZA  
P.O. BOX 27  
ST. PAUL, MN 55101

FOR INFO  
CALL 208-343-4028 FAX 208-343-0958

© 2000 Blackwell Science Ltd, *Journal of Clinical Pharmacy and Therapeutics*, 25, 1-6

--

--	--

C.W. MOORE PLAZA  
250 S. 6TH ST. BOISE, ID 83702  
(208) 343-6635 FAX (208) 343-1858  
<http://www.cwmoore.com>

---

---

---

Source: *Author's calculations*.

# SHOA


--	--

C

---

— 2 —

10/1/2000

007/290041  
02, 2011



Architectural floor plan of the first floor showing water and gas layouts. The plan includes various rooms such as offices, corridors, a reception area, a conference room, a lobby, and restrooms. It also shows the placement of water and gas pipes, valves, and fixtures. The plan is oriented with North at the top and includes a scale bar and a north arrow.

Rooms and areas labeled include:

- OFFICE 101, 102, 103, 104, 105, 106, 107, 108, 109, 110, 111, 112, 113, 114, 115, 116, 117, 118, 119
- RECEPTION 106
- WAITING 104
- LOBBY 105
- CONFERENCE ROOM 114
- LOBBY 101
- VESTIBULE 100
- CORRIDOR 101, 102, 103, 104, 105, 106, 107, 108, 109, 110, 111, 112, 113, 114, 115, 116, 117, 118, 119
- STAIR 101
- MENS 107
- WOMENS 108
- STORAGE 113
- SUPPLY 111

Water and gas fixtures and components shown include:

- Water valves (indicated by a circle with a cross)
- Gas valves (indicated by a circle with a dot)
- Water and gas pipes (indicated by solid and dashed lines)
- Water and gas meters (indicated by a circle with a cross and a dot)
- Water and gas fixtures (indicated by a circle with a cross and a dot)

North arrow pointing up.

Scale: 1/4" = 1'-0"

3.1/4" HBL 2" CK AND 1" H UP FROM GROUND LEVEL. TRANSITION CK TO 2" AND ROUTE ALL PIPING TO SECOND FLOOR. RE: P213-1 AND P211-1 FOR CONNECTION.

3.1/4" CK UP FROM GROUND LEVEL. RE: P213-1 FOR CONNECTION.

3.1/4" CK UP FROM UNDER FLOOR. PIPER CONNECTIONS ASSEMBLY DOWN AS WELL TO FLOOR DRAIN TRAP. PIPER CONNECTION RE: P311-8 FOR TRAP PIPER AT FLUSH VALVE DETAIL.

3.1/4" CK UP TO ELEVATION 4" H FLOOR DRAIN TRAP PIPER CONNECTION. RE: P311-1 FOR CONNECTION.

# 1 FIRST FLOOR WATER & GAS PLAN

$$\text{CALC: } 1/\lambda^* = 1/\lambda' - 1/\lambda^0$$


C.W. MOORE PLAZA  
250 S. 5TH ST. BOISE, ID 83702  
(208) 343-4635 FAX (208) 343-1858  
http://www.cabot.com

DAVID J. EVERTON, P.E.  
1700 WOODBINE PLAZA  
SUITE 300  
CHICAGO, ILL. 60606



DO FILE NAME:  
531-10-114\_P2.6

SOURCE FILE NAME:  
531-10-114\_xTBULK  
531-10-114\_xFIRST FLA

FIRST FLOOR  
WATER & GAS PLAN

VAMC  
PHASE II: BUILDING 33

478

P2.6

1000

/AMC BOISE, IDAHO

SPENCER: MEDICAL CENTER DIRECTOR

2

[illegible]

<http://www.cshqa.com>

# COLIPA

1

1

10

NOTE  
"CO"  
MAY BE

## SCALE: 1/4" = 1'-0"



① SHEET NOTES:

- [illegible]

Age (yr)	Sex	Height (cm)	Weight (kg)	Body mass index (kg/m <sup>2</sup> )	Waist circumference (cm)	Waist-hip ratio	Visceral fat (cm <sup>2</sup> )	Subcutaneous fat (cm <sup>2</sup> )	Visceral-to-subcutaneous fat ratio
12.7	male	158.1	50.8	32.1	93.5	0.85	10.5	15.5	0.68
13.1	male	162.5	55.5	34.2	95.5	0.85	11.5	16.5	0.70
13.5	male	167.0	60.0	36.5	97.0	0.85	12.0	17.0	0.71
13.9	male	171.5	65.0	38.5	98.5	0.85	12.5	17.5	0.72
14.3	male	176.0	70.0	40.5	100.0	0.85	13.0	18.0	0.73
14.7	male	180.5	75.0	42.5	101.5	0.85	13.5	18.5	0.74
15.1	male	185.0	80.0	44.5	103.0	0.85	14.0	19.0	0.75
15.5	male	189.5	85.0	46.5	104.5	0.85	14.5	19.5	0.76
15.9	male	194.0	90.0	48.5	106.0	0.85	15.0	20.0	0.75
16.3	male	198.5	95.0	50.5	107.5	0.85	15.5	20.5	0.76
16.7	male	203.0	100.0	52.5	109.0	0.85	16.0	21.0	0.76
17.1	male	207.5	105.0	54.5	110.5	0.85	16.5	21.5	0.77
17.5	male	212.0	110.0	56.5	112.0	0.85	17.0	22.0	0.77
17.9	male	216.5	115.0	58.5	113.5	0.85	17.5	22.5	0.78
18.3	male	221.0	120.0	60.5	115.0	0.85	18.0	23.0	0.78
18.7	male	225.5	125.0	62.5	116.5	0.85	18.5	23.5	0.79
19.1	male	230.0	130.0	64.5	118.0	0.85	19.0	24.0	0.79
19.5	male	234.5	135.0	66.5	119.5	0.85	19.5	24.5	0.80
19.9	male	239.0	140.0	68.5	121.0	0.85	20.0	25.0	0.80
20.3	male	243.5	145.0	70.5	122.5	0.85	20.5	25.5	0.80
20.7	male	248.0	150.0	72.5	124.0	0.85	21.0	26.0	0.81
21.1	male	252.5	155.0	74.5	125.5	0.85	21.5	26.5	0.81
21.5	male	257.0	160.0	76.5	127.0	0.85	22.0	27.0	0.81
21.9	male	261.5	165.0	78.5	128.5	0.85	22.5	27.5	0.82
22.3	male	266.0	170.0	80.5	130.0	0.85	23.0	28.0	0.82
22.7	male	270.5	175.0	82.5	131.5	0.85	23.5	28.5	0.83
23.1	male	275.0	180.0	84.5	133.0	0.85	24.0	29.0	0.83
23.5	male	279.5	185.0	86.5	134.5	0.85	24.5	29.5	0.83
23.9	male	284.0	190.0	88.5	136.0	0.85	25.0	30.0	0.83
24.3	male	288.5	195.0	90.5	137.5	0.85	25.5	30.5	0.84
24.7	male	293.0	200.0	92.5	139.0	0.85	26.0	31.0	0.84
25.1	male	297.5	205.0	94.5	140.5	0.85	26.5	31.5	0.84
25.5	male	302.0	210.0	96.5	142.0	0.85	27.0	32.0	0.84
25.9	male	306.5	215.0	98.5	143.5	0.85	27.5	32.5	0.85
26.3	male	311.0	220.0	100.5	145.0	0.85	28.0	33.0	0.85
26.7	male	315.5	225.0	102.5	146.5	0.85	28.5	33.5	0.85
27.1	male	320.0	230.0	104.5	148.0	0.85	29.0	34.0	0.85

- 3/8" HBS, 1-1/2" CK, AND 1" HBS UP FROM FIRST FLOOR. P2-B-1 FOR CONTINUATION.

① SHEET NOTES:

