

1 SECOND FLOOR PLAN
1/8" = 1'-0"



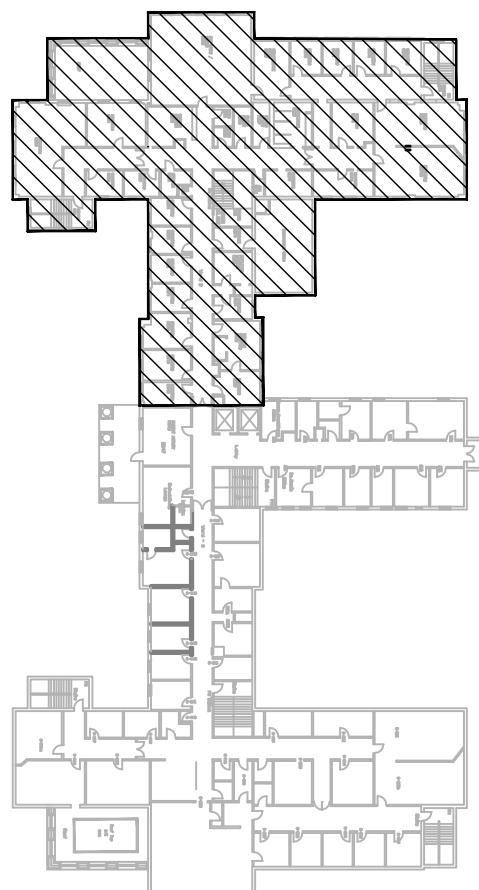
DEMOLITION NOTES

1. DISCONNECT AND REMOVE ALL AFFECTED WIRES, CONDUITS, ETC. AND CAP OFF SERVICES UNTIL NEEDED.
2. DISCONNECT AND REMOVE EXISTING LIGHTING FIXTURES COMPLETELY, INCLUDING ALL ASSOCIATED CONDUIT WIRING AND BOXES BACK TO PANEL. REMOVE, SAVE AND RETURN TO OWNER ALL LIGHTING FIXTURE BALASTS.
3. DISCONNECT AND REMOVE EXISTING HVAC CONTROL WIRING AND CONDUIT. COORDINATE WITH MECHANICAL DEMOLITION.
4. DISCONNECT AND REMOVE ALL EXISTING SMOKE DETECTORS AND RETURN TO OWNER.
5. REMOVE ANY EXISTING CABLE TRAY, SAVE AND REINSTALL WITH NEW CABLE TRAY.
6. DISCONNECT TO EXTENT REQUIRED. WANDERGUARD SYSTEM AT WARD ENTRY, SYSTEM TO BE RE-INSTALLED AFTER REPLACEMENT OF DOOR AND FRAME. COORDINATE WITH OWNER AND ARCHITECTURAL DEMOLITION.

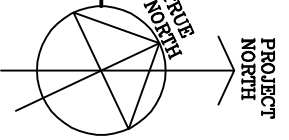
GENERAL NOTES

1. CONTRACTOR SHALL REVIEW THE HAZARDOUS SUBSTANCE SURVEY REPORT BY DECOMMISSIONING CONSULTING SERVICES, LIMITED, & THE HAZARDOUS SUBSTANCE ABATEMENT REPORT BY DCS AND TAKE ALL REQUIRED PRECAUTIONS DURING DEMOLITION & DISPOSAL OF CONSTRUCTION WASTES.
2. THESE DRAWINGS ARE TO BE READ IN CONJUNCTION WITH ALL FLOOR PLANS SHOWING NEW CONSTRUCTION, THE FULL DRAWING SET AND THE SPECIFICATIONS TO FORM THE FULL DEMOLITION DOCUMENTATION.
3. SCOPE OF DEMOLITION WORKS INCLUDES ALL DEMOLITION REQUIRED TO ACCOMPLISH THE PROJECTS INDICATED THEREON. STRUCTURAL AND MECHANICAL DEMOLITION WORK, PATCH AND MAKE GOOD ALL AREAS TO REMAIN AFTER DEMOLITION.
4. ALL MECHANICAL AND ELECTRICAL DEMOLITION WORK ARE TO BE REMOVED COMPLETE WITH ALL ASSOCIATED FIXTURES, APPLIANCES, CONDUITS, DUCTS, HANGERS, ETC. AND THE AFFECTED SERVICES CAPPED OFF.
5. NO EXTRAS WILL BE CONSIDERED FOR WORKS REQUIRED TO COMPLETE ALL ASPECTS OF THE CONTRACT WORK AFFECTED BY REMOVAL OF EXISTING WORKS, CONNECTION TO NEW WORKS OR DAMAGES CAUSED BY DEMOLITION.
6. ANY OPENINGS(S) IN WALLS, FLOORS, ROOFS OR BULKHEAD NO LONGER REQUIRED AND/OR CAUSED BY DEMOLITION ARE TO BE FILLED AND MADE GOOD WITH SAME CONSTRUCTION AS ADJACENT TO ACCOMPLISH A NEAT CLEAN FINISH FOR THE CONSULTANT'S APPROVAL.
7. ALL DEMOLITION/CONSTRUCTION WASTE ARE TO BE REMOVED FROM SITE AND DISPOSED OF OFF SITE.
8. PRESERVE & PROTECT FROM DAMAGE DURING DEMOLITION AND CONSTRUCTION ALL EXISTING SURFACES TO REMAIN.
9. REMOVE EXISTING ABANDONED SERVICES, PATCH AND MAKE GOOD WALLS TO RECEIVE NEW SCHEDULED FINISHES.
10. PROTECT ALL EXISTING EQUIPMENT (ELECTRICAL & MECHANICAL) & WIRING TO REMAIN DURING DEMOLITION & CONSTRUCTION.

KEY PLAN
NTS



0' 4' 8' 12' 16'
SCALE: 1/8" = 1'-0"



100% Submission 90% Submission 60% Submission	7/02/10 6/27/10 4/22/10	Revisions
VA WESTERN NEW YORK HEALTHCARE SYSTEM 3495 BAILEY AVENUE BUFFALO, NEW YORK 14215		
URS BUFFALO, NY, 77 GOODELL ST 716-856-5636		
Architect		
stamp		
CARDIOLOGY	DATE	ENGINEERING MANAGER
INFECTION CONTROL	DATE	CARELINE MANAGER
SAFETY OFFICER	DATE	CHIEF OF STAFF
Drawing Title SECOND FLOOR ("WARD B") DEMOLITION PLAN		
Project Title RENOVATION OF BLDG. #1, 2ND FLOOR, B-WARD		
Location V.A.M.C. BATAVIA, NEW YORK		
Date July 2, 2010 (UPDATED 10/07/10)		
Station No. 528		
09-352 ED-002		
Office of Facilities		
Department of Veterans Affairs		