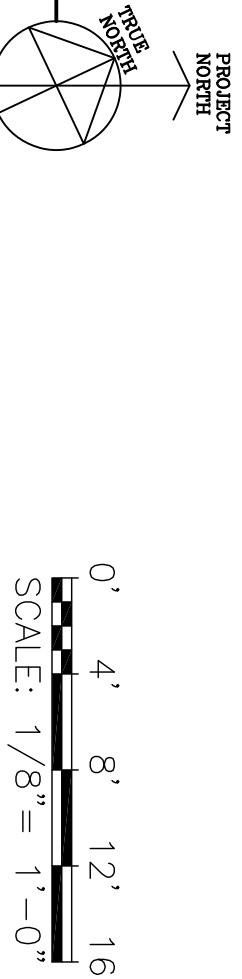
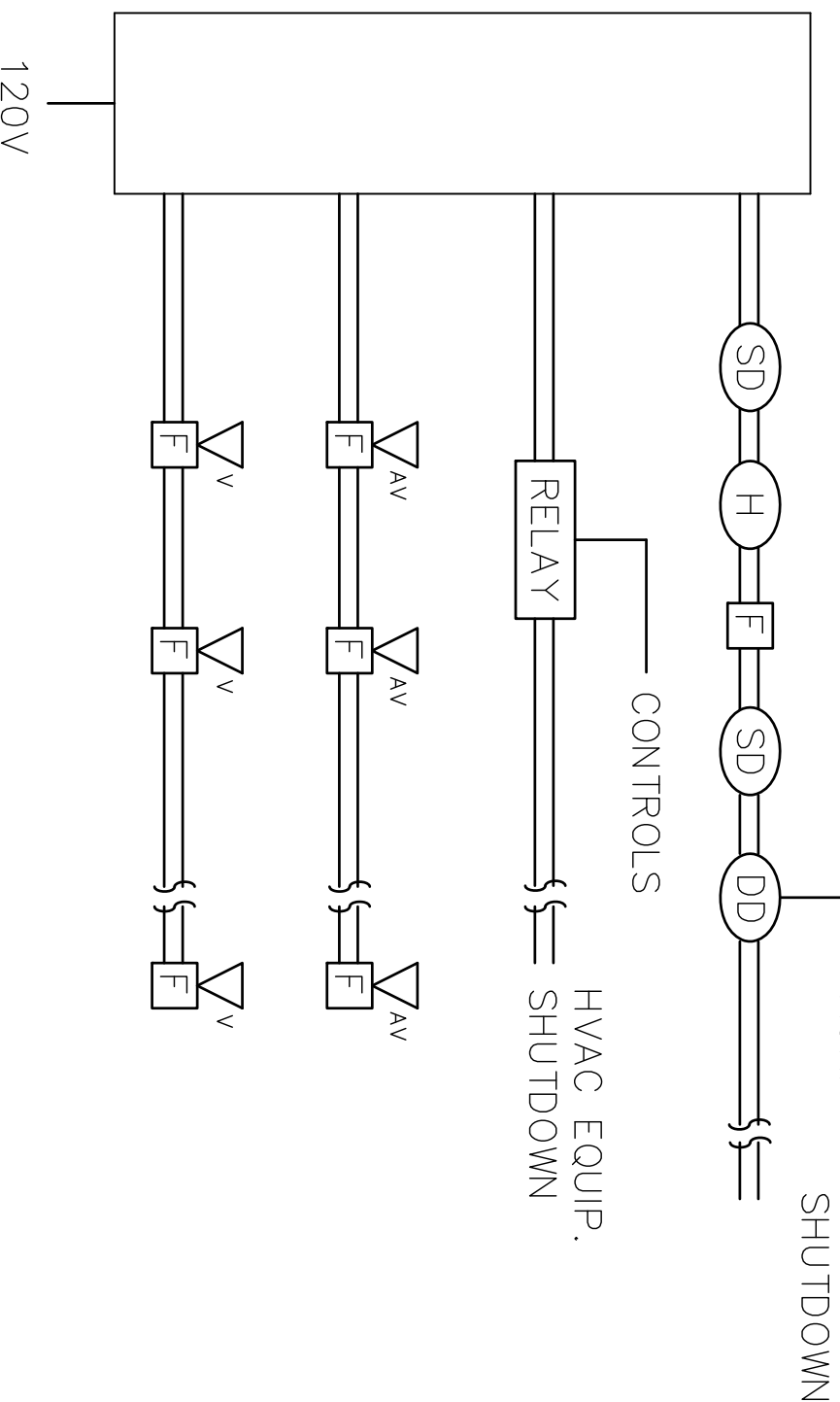


SECOND FLOOR PLAN



- KEYED NOTES**
1. PROVIDE CONNECTIONS TO NEW DELAYED EGRESS LOCKS ON STAIRWELL EXIT DOORS.
  2. PROVIDE REQUIRED CONNECTIONS FOR ELECTROMAGNETIC DOOR CLOSER HOLDERS FOR KITCHEN/DINING/ACTIVITIES AREA FIRE DOORS / HOLDERS TO RELEASE UPON ACTIVATION OF SYSTEM SMOKE DETECTORS.
  3. PROVIDE DEVICES AND CONNECTIONS FOR INTEGRATION OF KITCHEN HOOD SUPPRESSION SYSTEM WITH FIRE ALARM SYSTEM AND RANGE CONTRACTOR AND ANSUL SYSTEM INSTALLER.
  4. PROVIDE CONNECTIONS FOR FIRE/SMOKE DAMPERS AS SHOWN ON DRAWING MH202. COORDINATE FINAL LOCATIONS AND CONNECTIONS WITH MECHANICAL CONTRACTOR.
  5. PROVIDE RECONNECTION OF ALL FIRE ALARM, EGRESS, AND ACCESS SYSTEMS FOR NEW RELOCATED WARD B ENTRANCE DOOR. COORDINATE CONNECTIONS WITH DOOR AND DOOR HARDWARE INSTALLATION. FINAL INSTALLATION AND CONNECTIONS SHALL COMPLY WITH ALL APPLICABLE CODES AND SHALL FUNCTION COMPATIBLY WITH AND IN THE SAME MANNER AS THE ORIGINAL DOOR AND SYSTEMS.
  6. PROVIDE DUCT SMOKE DETECTOR AND FAN SHUTDOWN RELAY FOR AIR HANDLING UNIT SUPPLY DUCT AND FAN. INSTALL PER ALL APPLICABLE CODES INCLUDING NFPA 90A, NFPA 72, NFPA 101, UNIFORM FEDERAL ACCESSIBILITY STANDARDS (UFAS), AND VA FIRE PROTECTION DESIGN GUIDE.

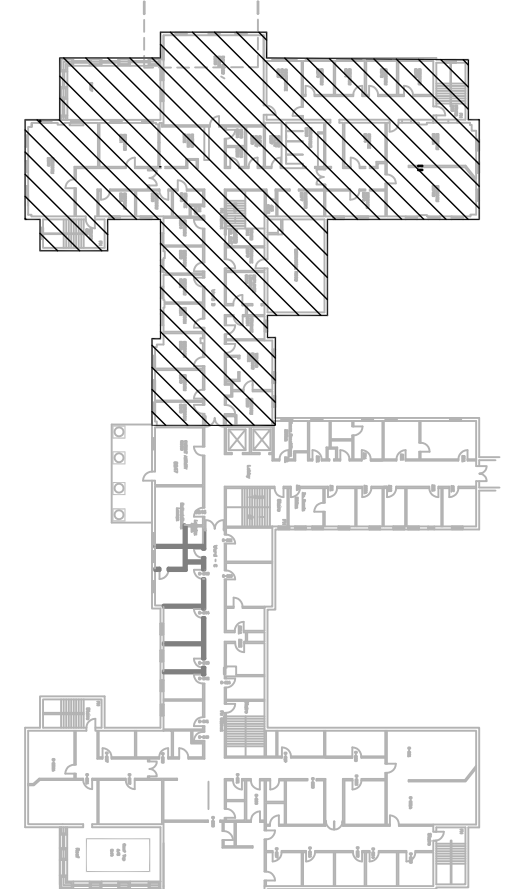
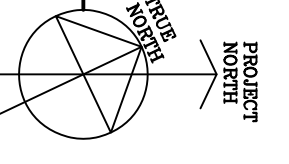
TYPICAL FIRE ALARM RISER DETAIL



ELECTRONIC SAFETY AND SECURITY SYMBOLS

- ALARM, CHECK VALVE**
- ALARM, FIRE, COMMUNICATOR**
- ALARM, FIRE, PANEL:** LETTERS INDICATE AS FOLLOWS:  
BATT = BATTERIES CHR = CHARGER FAR = RECORDER  
FACP = CONTROL PANEL FAXP = ANNUNCIATOR PANEL
- ALARM, FIRE: LETTERS INDICATE AS FOLLOWS:**
- ALARM, FIRE, VALVE SUPERVISORY SWITCH.**
- ALARM, FIRE, TERMINAL CABINET.**
- ALARM, FIRE, POST INDICATOR VALVE.**
- ALARM, TRANSDUCER OR TRANSMITTER**
- ALARM, FIRE, MANUAL PULL STATION**
- ALARM, CONG**
- ALARM, HORN/LIGHT, ONE ASSEMBLY**
- ALARM, HORN/LIGHT, ONE ASSEMBLY WITH CHIME**
- ALARM, HORN/LIGHT, SEPARATE ASSEMBLY**
- ALARM, LAMP LIGHT, SIGNAL LIGHT, STROBE**
- ALARM, MANUAL CONTROL**
- ALARM, MINI HORN**
- ALARM, SPRINKLER SYSTEM WATER FLOW BELL**
- ALARM, VOICE COMMUNICATION PANEL**
- ALARM, TAMPER SWITCH**
- DETECTION, GAS**
- DETECTION, SMOKE CONTROL AND PRESSURE PANEL**
- DETECTION SWITCH, ABORT**
- DETECTION SWITCH, VALVE TAMPER**
- DETECTOR, FLAME FLICKER**
- DETECTOR, FLOW SWITCH**
- DETECTOR, HEAT**
- DETECTOR, HEAT, LETTER INDICATES AS FOLLOWS:**  
R/T = COMBINATION F = FIXED TEMPERATURE RISE  
R/C = RATE COMPENSATION R = RATE OF
- DETECTOR, LETTER INDICATES AS FOLLOWS:**
- BLANK, SMOKE DETECTOR**
- I = IONIZATION SMOKE**
- P = PHOTOELECTRIC SMOKE**
- IP = IONIZATION AND HEAT SMOKE**
- IPH = IONIZATION AND PHOTOELECTRIC SMOKE**
- IPH = IONIZATION, PHOTOELECTRIC, AND HEAT**
- DETECTOR, SMOKE, FOR DUCT**
- DETECTOR, SWITCH LEVEL**
- FIRE ALARM STATION, MANUAL PULL**
- FIRE ALARM LINE = FA**
- ELECTROMAGNETIC TYPE DOOR HOLDER OUTLET**
- CITY FIRE ALARM MASTER STATION MFD 5'-6" [1676mm] AFF UNLESS NOTED.**
- FIRE ALARM TRANSMITTER (BASE LOOP) NUMERALS DENOTE CODE.**
- FIRE ALARM TROUBLE TRANSMITTER (BASE LOOP) NUMERALS DENOTE CODE.**
- FAN SHUTDOWN RELAY**

KEY PLAN



100% Submission	7/02/10
90% Submission	5/27/10
60% Submission	4/22/10
Revisions	Date

VA WESTERN NEW YORK HEALTHCARE SYSTEM  
3495 BAILEY AVENUE  
BUFFALO, NEW YORK 14215

**URS**  
BUFFALO, NY.,  
77 GODELL ST  
716-856-5636

Architect

stamp

SAFETY OFFICER

DATE

CHIEF OF STAFF

DATE

ASSOCIATE MEDICAL CENTER DIRECTOR

DATE

Building Number  
Checked  
Drawn

Drawing Title  
SECOND FLOOR ("WARD B")  
FIRE ALARM LAYOUT PLAN,  
LEGEND AND NOTES

Project Title  
RENOVATION OF BLDG. #1,  
2ND FLOOR, B-WARD

Date  
JULY 2, 2010 (UPDATED 10/07/10)  
Sheet No.  
558

09-352 FA-201

Office of Facilities

Department of Veterans Affairs