


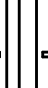

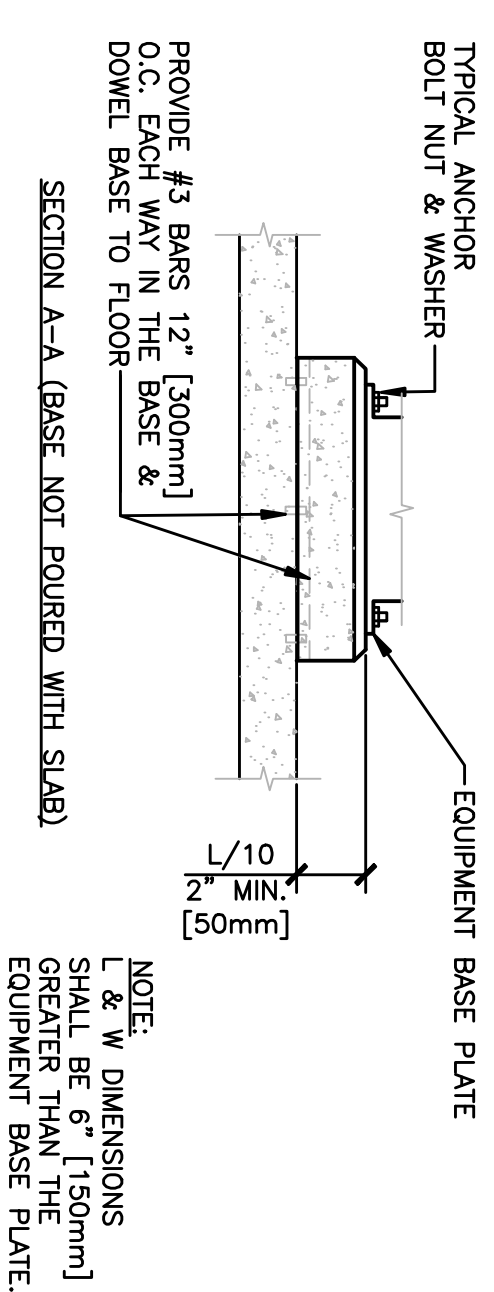
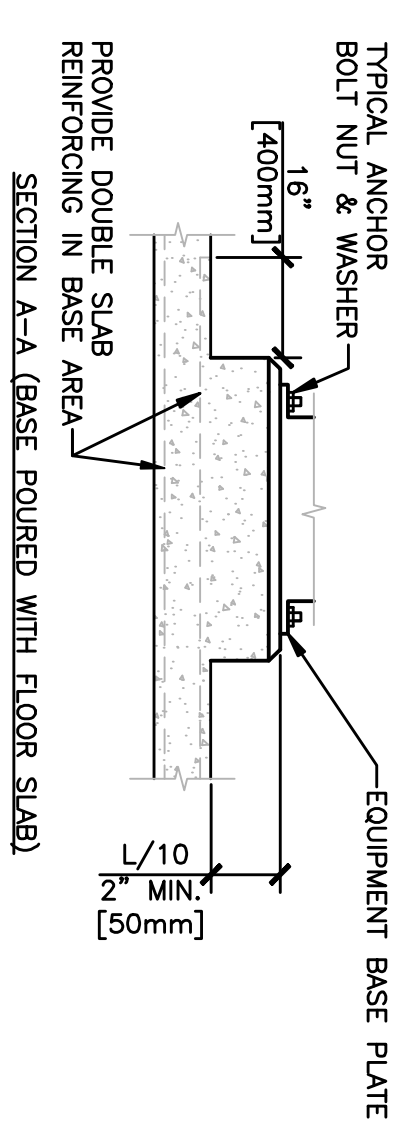
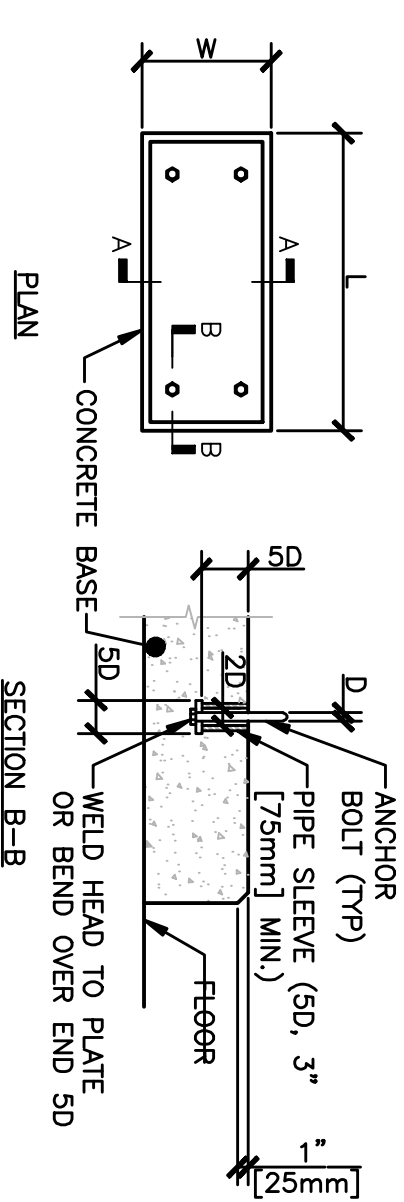
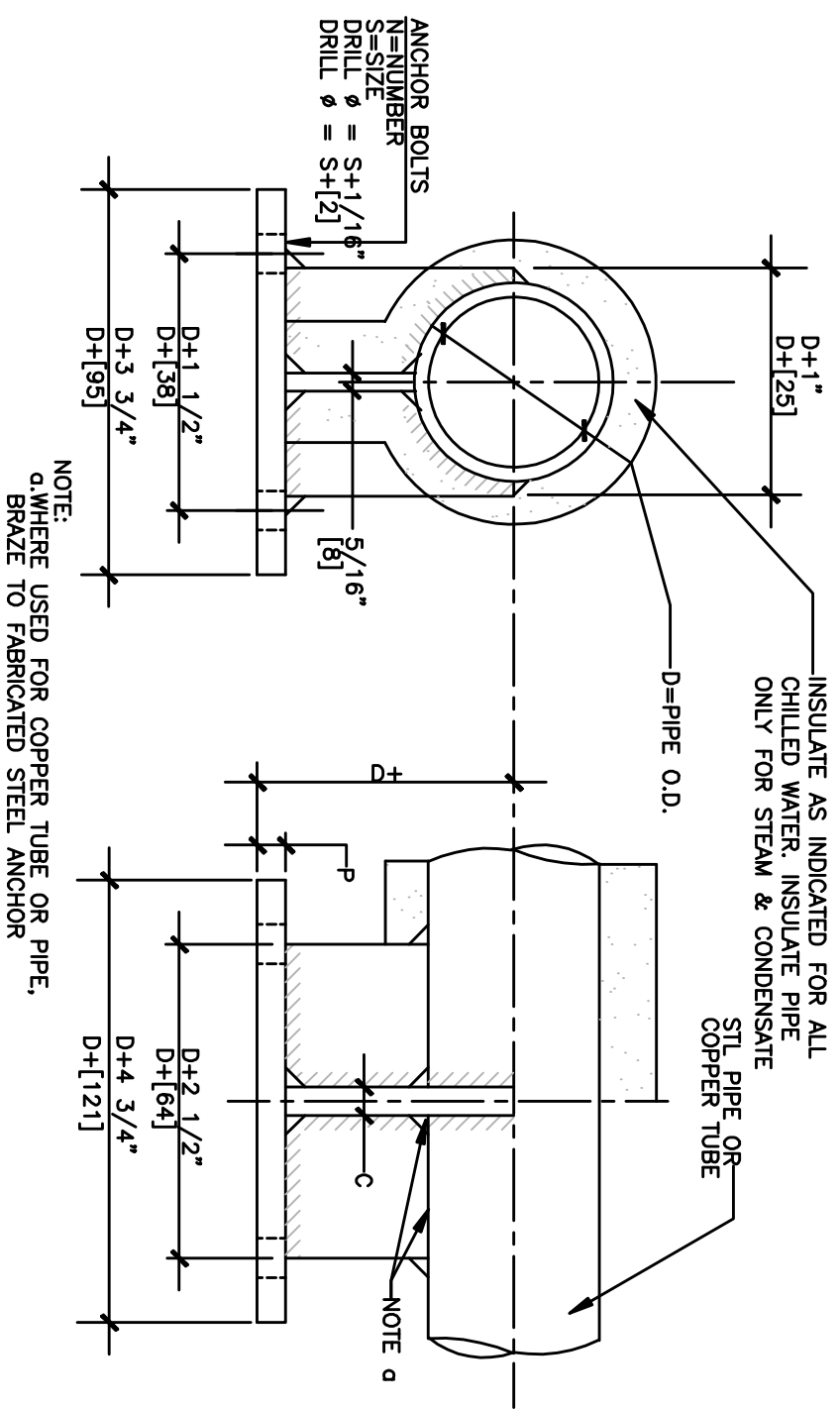


PIPE ANCHOR SCHEDULE											
D		P		C		N		S		BOLT PATTERN	
IN	MM	IN	MM	IN	MM	IN	MM	IN	MM		
4"	102	8"	16	3"	19	4"	102	3"	19		
3"	76	3"	13	3"	13	4"	102	8"	16		
2 1/2"	64	3"	10	8"	10	4"	102	8"	16		
2"	51	3"	10	8"	10	4"	102	8"	16		
1 1/2"	38	3"	10	4"	6	4"	102	2"	13		



The drawing consists of two views: an elevation view on the left and a plan view on the right.

**Elevation View:** Shows a cross-section of a wall assembly. A horizontal pipe passes through the wall. The wall has an outer layer (brick or concrete) and an inner layer (insulation). The pipe is surrounded by a sleeve. The sleeve has a top flange with a riser clamp and a bottom flange with a riser clamp. The sleeve is secured with bolts. The sleeve is labeled "PIPE SLEEVE WHICH SPECIFIED". The riser clamps are labeled "RISER CLAMP". The bolts are labeled "BOLT". The sleeve is secured with "FIRE-STOPPING MATERIAL". The sleeve is secured with "INSULATION". The sleeve is secured with "BOTTOM CLAMP". The sleeve is secured with "ACQUIRED POINTS ONLY".

**Plan View:** Shows a top-down view of the pipe and sleeve. The pipe is labeled "PIPE". The sleeve is labeled "PIPE SLEEVE WHICH SPECIFIED". The riser clamp is labeled "RISER CLAMP". The bolt is labeled "BOLT".

**Notes:**

1. PROVIDE ANCHORS ONLY WHERE SHOWN ON DRAWINGS.
2. EXTEND SLEEVE ABOVE FLOOR WHERE SPECIFIED

[illegible]

VIA WESTERN NEW YORK HEALTHCARE SYSTEM  
3495 BAILEY AVENUE  
BUFFALO, NEW YORK 14215

**URS**  
BUFFALO, NY.,  
77 GOODELL ST  
716-856-5636

## Architect

**stamp**

CARDIOLOGY	DATE	ENGINEERING MANAGER	DATE
INFECTION CONTROL	DATE	CARELINE MANAGER	DATE
SAFETY OFFICER	DATE	CHIEF OF STAFF	DATE

Drawing Title	
MECHANICAL DETAILS (SHEET 1 OF 8)	
DATE	
DATE	
MEDICAL CENTER DIRECTOR	DATE
ASSOCIATE MEDICAL CENTER DIRECTOR	DATE

Project Title	RENOVATION OF BLDG. #1, 2ND FLOOR, B-WARD		
Building Number	1	Checked	Drawn
Location	V.A.M.C. BATAVIA, NEW YORK		

<b>Date</b>	JULY 2, 2010 (UPDATED 10/07/10)
<b>Station No.</b>	528
<b>09-352 MH-602</b>	



Department of  
Veterans Affairs