

1. SECURE CHUBB CAP TO WOOD RAILING STRIP WITH 3/8" [10mm] COMMUN PLATED LAG BOLT NUT OVER 12" [300mm] ON CENTER.
2. SECURE ROOF CURB, DUCTWORK AND DAMPER TO ROOF WITH EXPANSION BOLTS (CONCRETE ROOF) OR RUST RESISTANT BOLTS (METAL DECK AND BAR JOIST ROOF).
3. RUN ELECTRICAL LINES THROUGH CLEARANCE HOLE PROVIDED IN GRANTY DAMPER THROUGH VENTILATOR ELECTRICAL CONDUIT GUIDE.

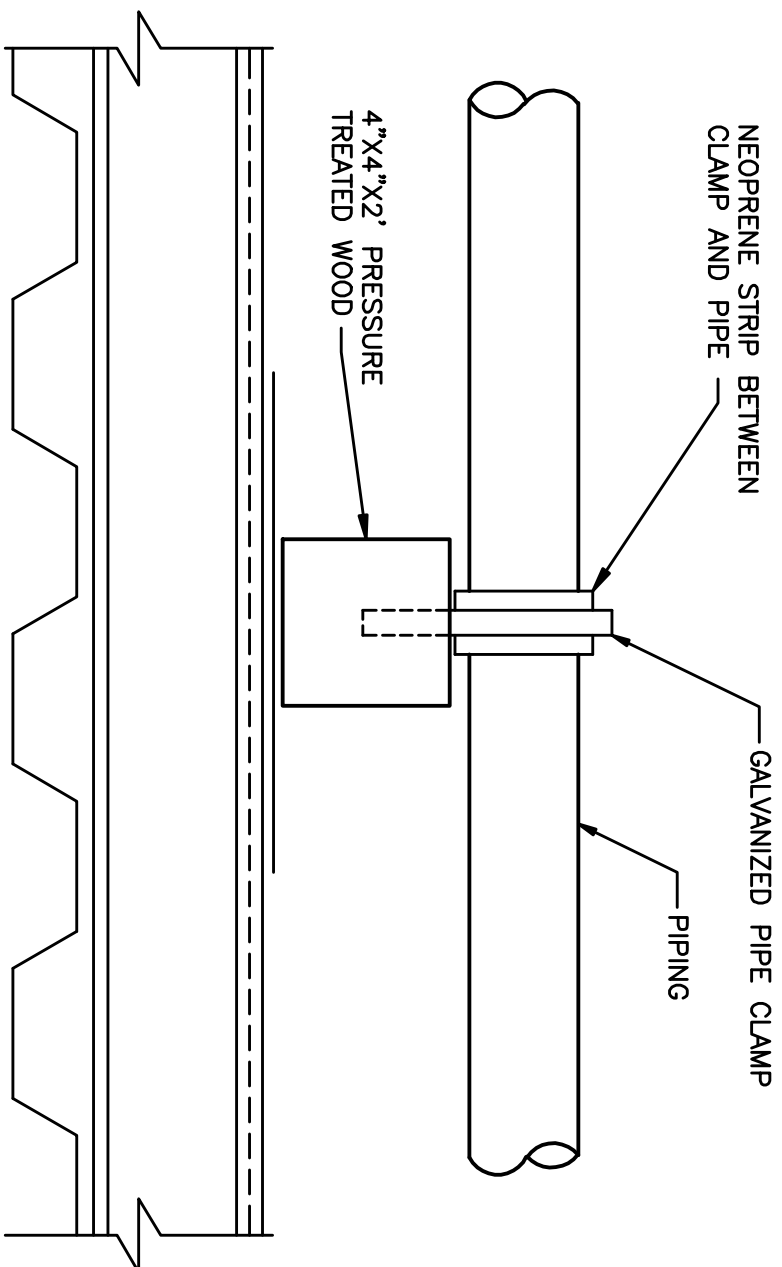
NOTE:

1 POWER ROOF VENTILATOR

NTS

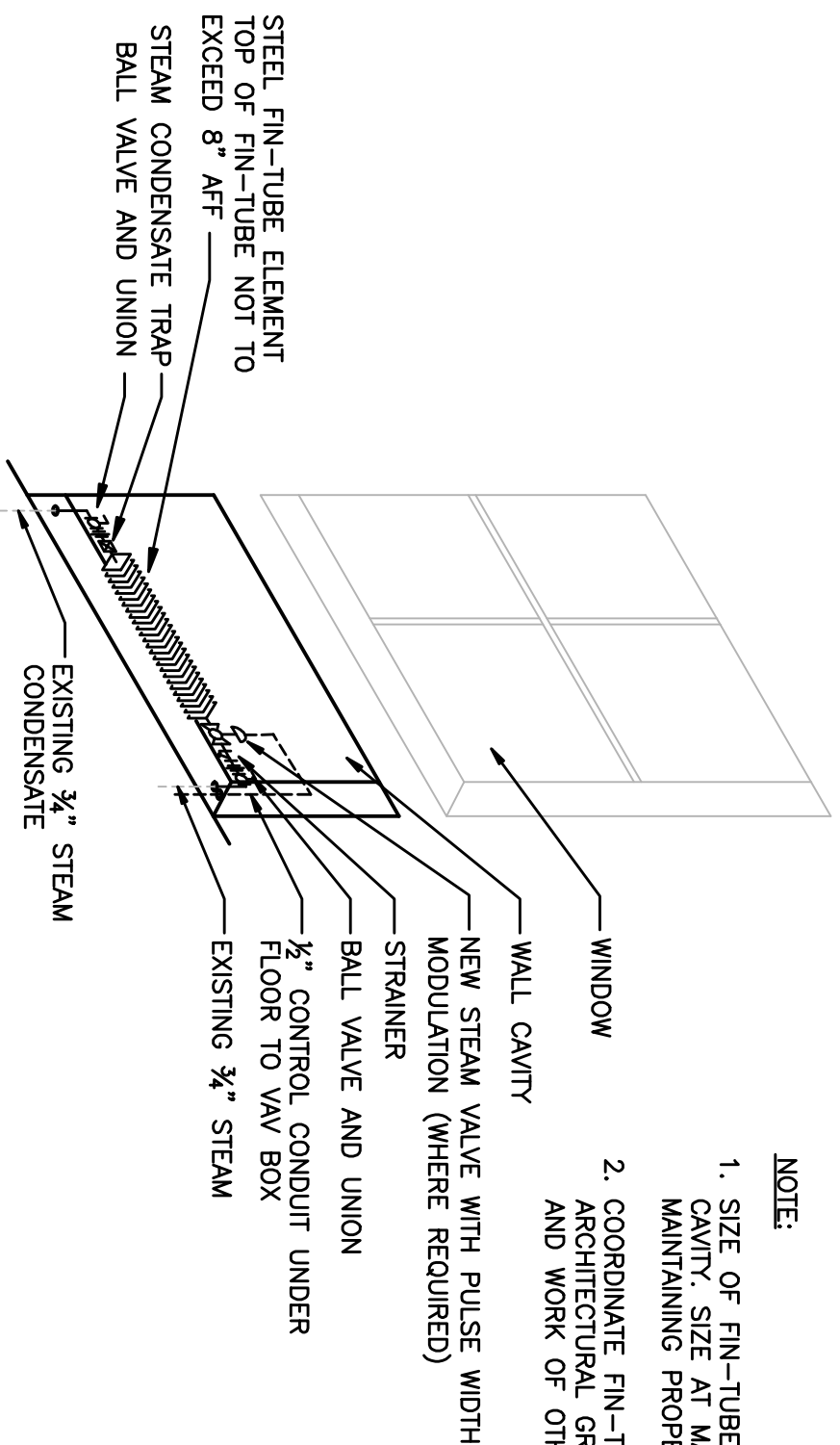
DESIGNERS' NOTES:

1. PROVIDE A MOTORIZED DAMPER, IF APPLICABLE.
2. PROVIDE DIRECT DRIVE FANS FOR LOCATIONS NOT EASILY ACCESSIBLE AND LESS THAN 2 HP.
3. MINIMUM CURB HEIGHT SHALL BE 12 INCHES (300 mm). INCREASE HEIGHT, IF REQUIRED, TO OVERCOME SNOW DRIFT.



2 ROOF MOUNTED PIPING SUPPORT

NTS

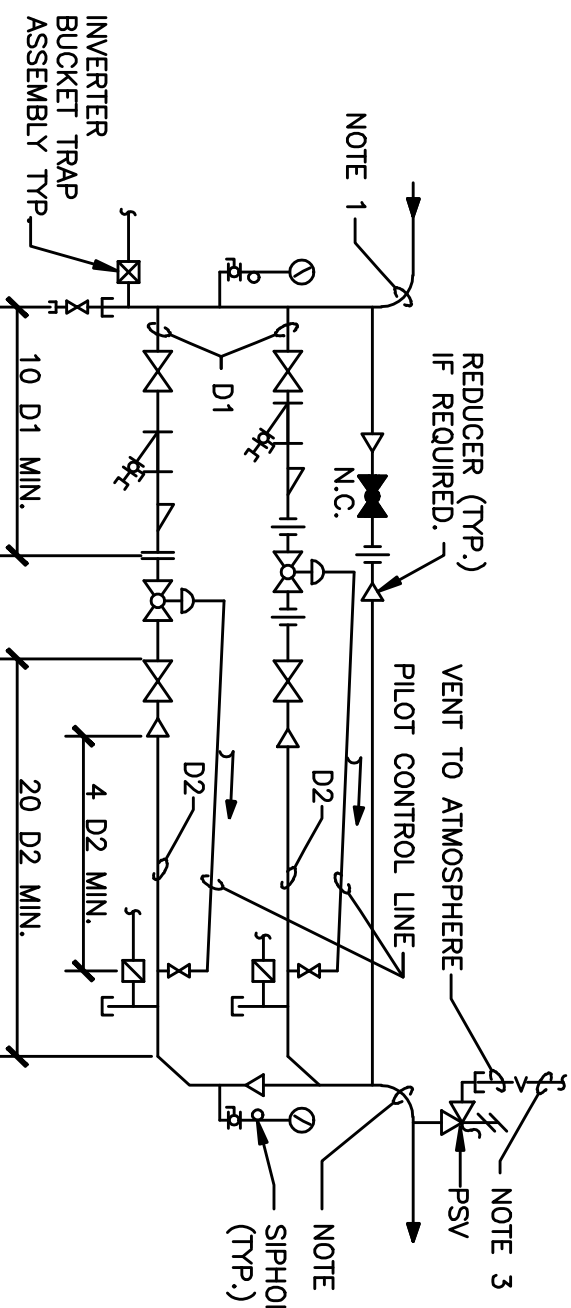


NOTE:

1. SIZE OF TIN-TUBE VARIES WITH WIDTH OF EXISTING CANY. SIZE AT MAXIMUM ALLOWABLE LENGTH WHILE MAINTAINING PROPER ACCESS TO VALVES.
 2. COORDINATE FIN-TIE AND VALVE LOCATIONS WITH ARCHITECTURAL GRILLE VALVE ACCESS PANEL ADJACENT WALLS AND WORK OF OTHER TRADES TO ENSURE ACCESSIBILITY.
- WALL REQUIRED
PULSE WIDTH

STEAM FIN-TUBE - PIPING CONNECTIONS

NTS

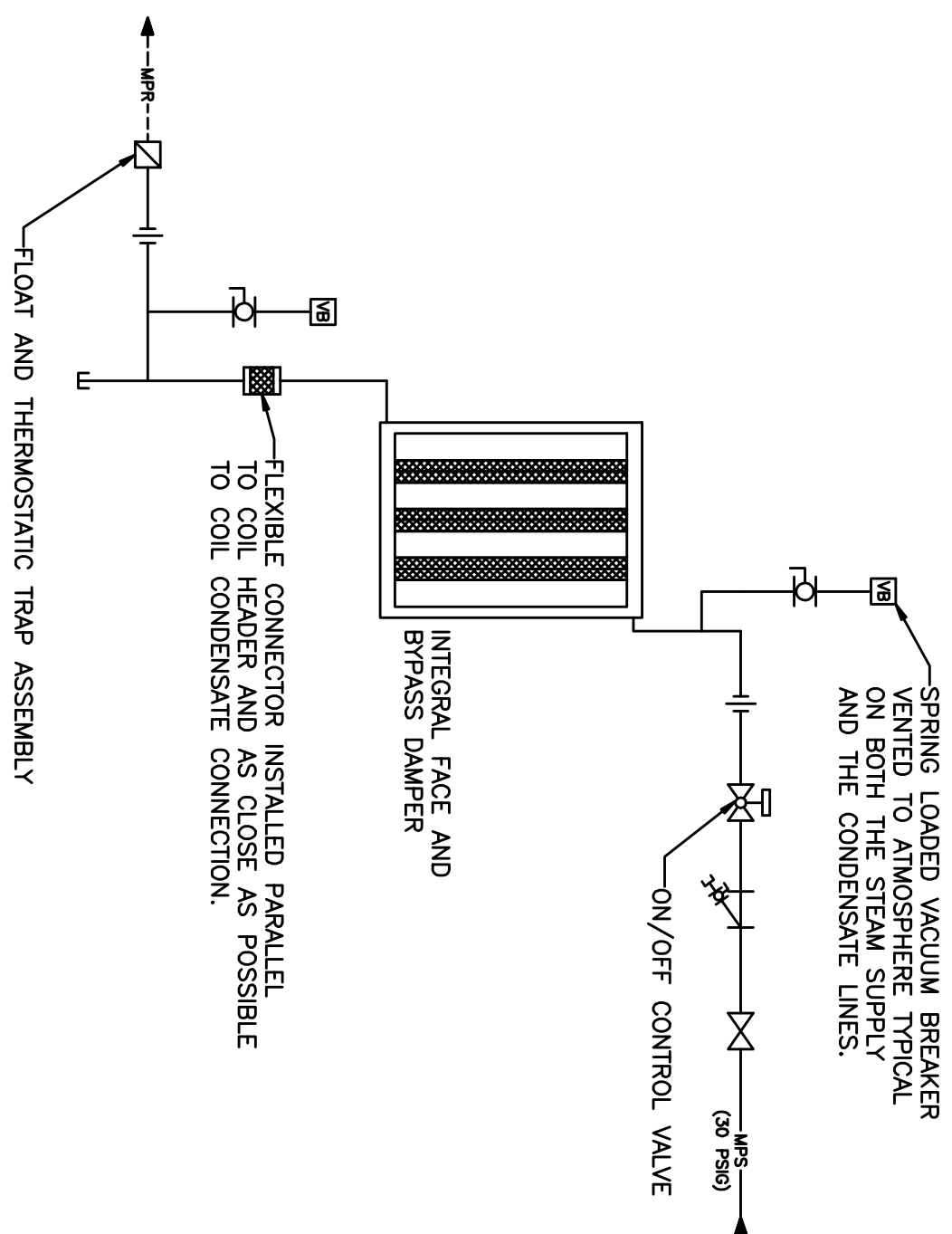


NOTE:

2. SEE EQUIPMENT SCHEDULES FOR VALVE DATA AND PIPE SIZES D1 AND D2. INSTALL VALVES AS RECOMMENDED BY MANUFACTURER.
3. MAKE BRASS VALVE DISCHARGE PIPE THE SAME SIZE AS D2 FOR THE LARGEST PVP.
4. PROVIDE NECESSARY UNIONS FOR THE REMOVAL OF VALVE WITH SOURED CONNECTIONS.

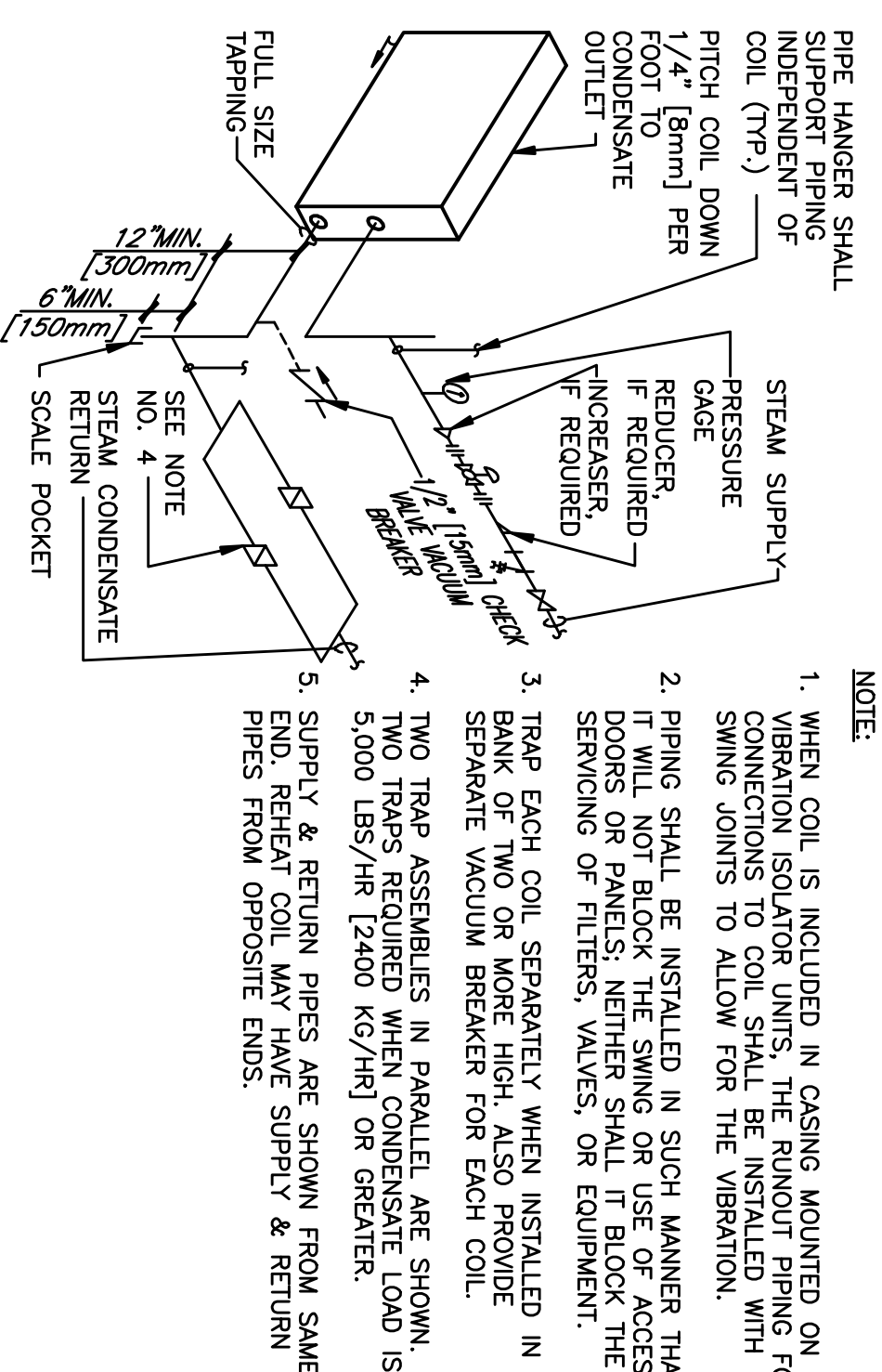
STEAM PRESSURE REDUCING STATION
DOUBLE VALVE (1/3 AND 2/3)

NTS



4 INTEGRAL FACE AND BYPASS STEAM COIL DETAIL

4



NOTE:

- [illegible]

5 STEAM COIL - PIPING CONNECTIONS

NTS

[illegible]

VA WESTERN NEW YORK HEALTHCARE SYSTEM
3495 BAILEY AVENUE
BUFFALO, NEW YORK 14215

URS
BUFFALO, NY.,
77 GOODELL ST
716-856-5636

Architect

CARDIOLOGY	DATE	ENGINEERING MANAGER	DATE
INFECTION CONTROL	DATE	CARELINE MANAGER	DATE
SAFETY OFFICER	DATE	CHIEF OF STAFF	DATE

Drawing Title	
MECHANICAL DETAILS (SHEET 8 OF 8)	
MEDICAL CENTER DIRECTOR	DATE
ASSOCIATE MEDICAL CENTER DIRECTOR	DATE

Project Title	RENOVATION OF BLDG #1, 2ND FLOOR, B-WARD		
Building Number	1	Checked	Drawn
Location	V.A.M.C. BATAVIA, NEW YORK		

Date	JULY 2, 2010 (UPDATED 10/07/10)
Station No.	528
09-352 MH-609	

