

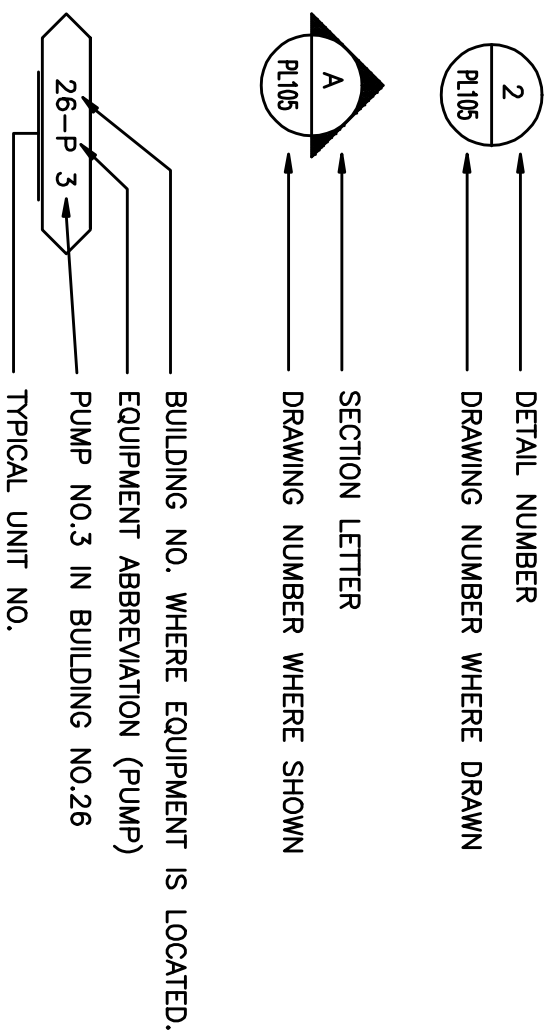
PLUMBING ABBREVIATIONS

| | | | |
|----------|---|---------------------|--------------------------------------|
| A/E | ARCHITECT / ENGINEER | EL | ELEVATION |
| A/E/C | ARCHITECT / ENGINEER / CONSTRUCTOR | ELMS | ELECTRICAL MATERIALS |
| AF | ABOVE FINISH FLOOR | EPA | ENVIRONMENTAL PROTECTION AGENCY |
| AFG | ABOVE FINISH GRADE | EPACT | ENERGY POLICY ACT |
| AG | ACCESS | ESD | ESCAPED |
| AS | AUTOMATIC | ESD/SUPPLIER | ESCAPED SUPPLIER |
| ASD | AUTOMATIC SPRINKLER | ET | EXPANSION TANK |
| ASD/ASPE | AUTOMATIC SPRINKLER DIAPHRAGM ENGINEERING | EW | ELECTRIC WATER COOLER |
| ASH/ME | AIR CONDITIONING | EWL | ELECTRIC WATER HEATER |
| ASME | AMERICAN SOCIETY MECHANICAL ENGINEERS | EWMS | EWASH STATION |
| ASPE | AMERICAN SOCIETY PLUMBING ENGINEERS | EX | EXISTING |
| ASR | ACID RESISTANT | | |
| AV | ACID VENT | | |
| AW | ACID WASTE | | |
| BRP | REDUCED PRESSURE BACKFLOW PREVENTER | F | FIREHOLE |
| BSP | BREAK BEFORE MAKE | FCO | FLOW CONTROL VALVE |
| BSP | BLACK STEEL PIPE | FCO | FLOW FILTERED COLD WATER |
| BTU | BRITISH THERMAL UNIT PER HOUR | FCO (HOSE) | FLOW CONTROL VALVE (HOSE) CONNECTION |
| BTU | BRITISH THERMAL UNIT PER HOUR | FM | FLOW METER |
| | | FM | FLOW METER |
| | | FOR FUEL OIL RETURN | FOR FUEL OIL RETURN |
| | | FOR FUEL OIL SUPPLY | FOR FUEL OIL SUPPLY |
| | | FS | FLOOR SWITCH |
| | | FS | FLOOR SWITCH |
| | | FU | FANFIVE DRINKS |
| 2 | GRADE | | |
| CCA | COMPRESSED GAS ASSOCIATION | | |
| CI | CAST IRON | | |
| CS | CLINICAL SINK | | |
| CV | CONTROL VALVE | | |

PLUMBING ABBREVIATIONS

| | |
|--------|-----------------------|
| L/S | LITER PER SECOND |
| LA | LABORATORY AIR |
| LAV | LAVATORY |
| LBS/HR | POUNDS PER HOUR |
| LCW | LABORATORY COLD WATER |
| LHW | LABORATORY HOT WATER |
| LNG | LIQUID NATURAL GAS |
| LOX | LIQUID OXYGEN |
| LV | LABORATORY VACUUM |
| LW | LOW WATER |

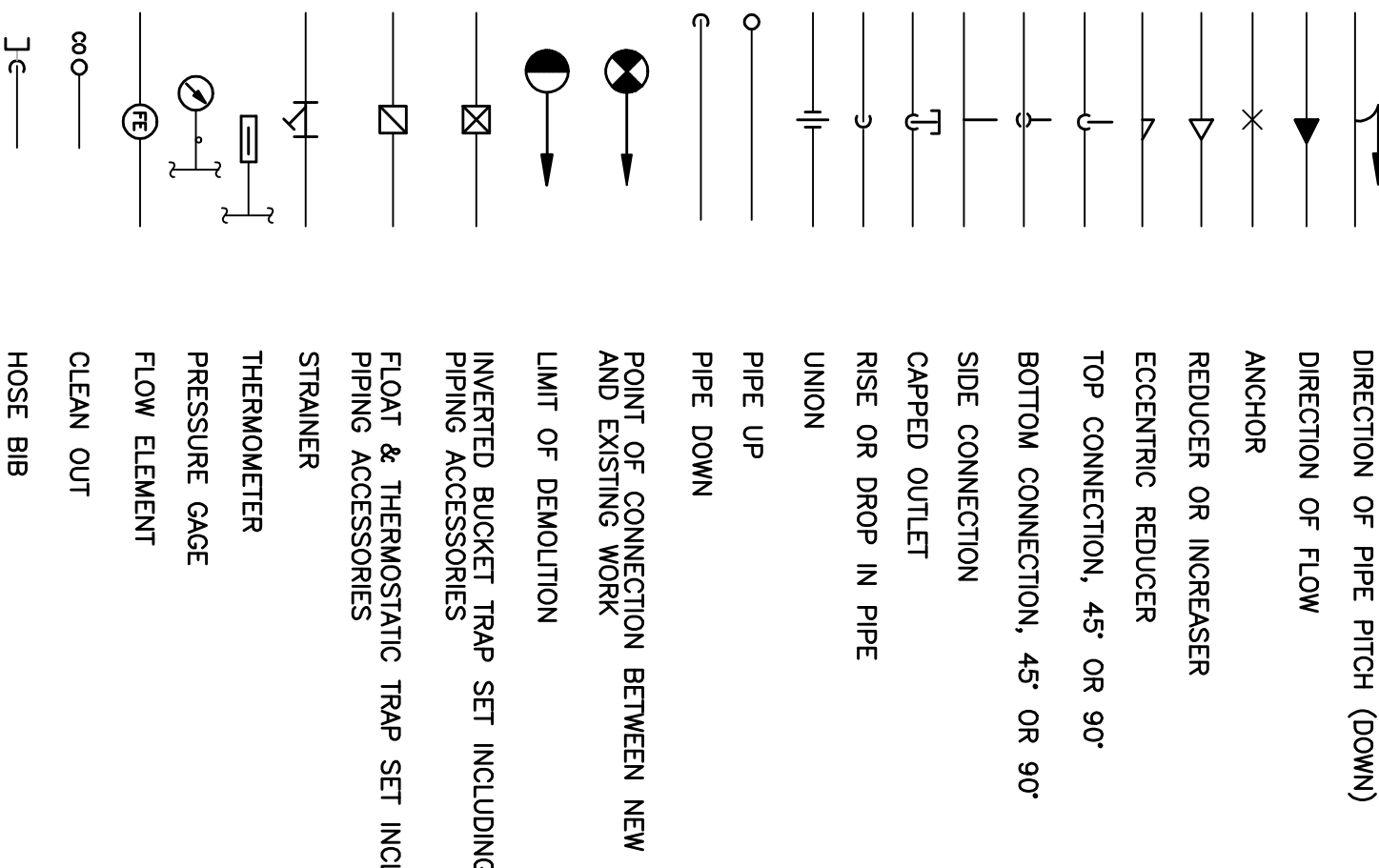
DRAWING SYMBOLS



PLUMBING PIPING SYMBOLS

[illegible]

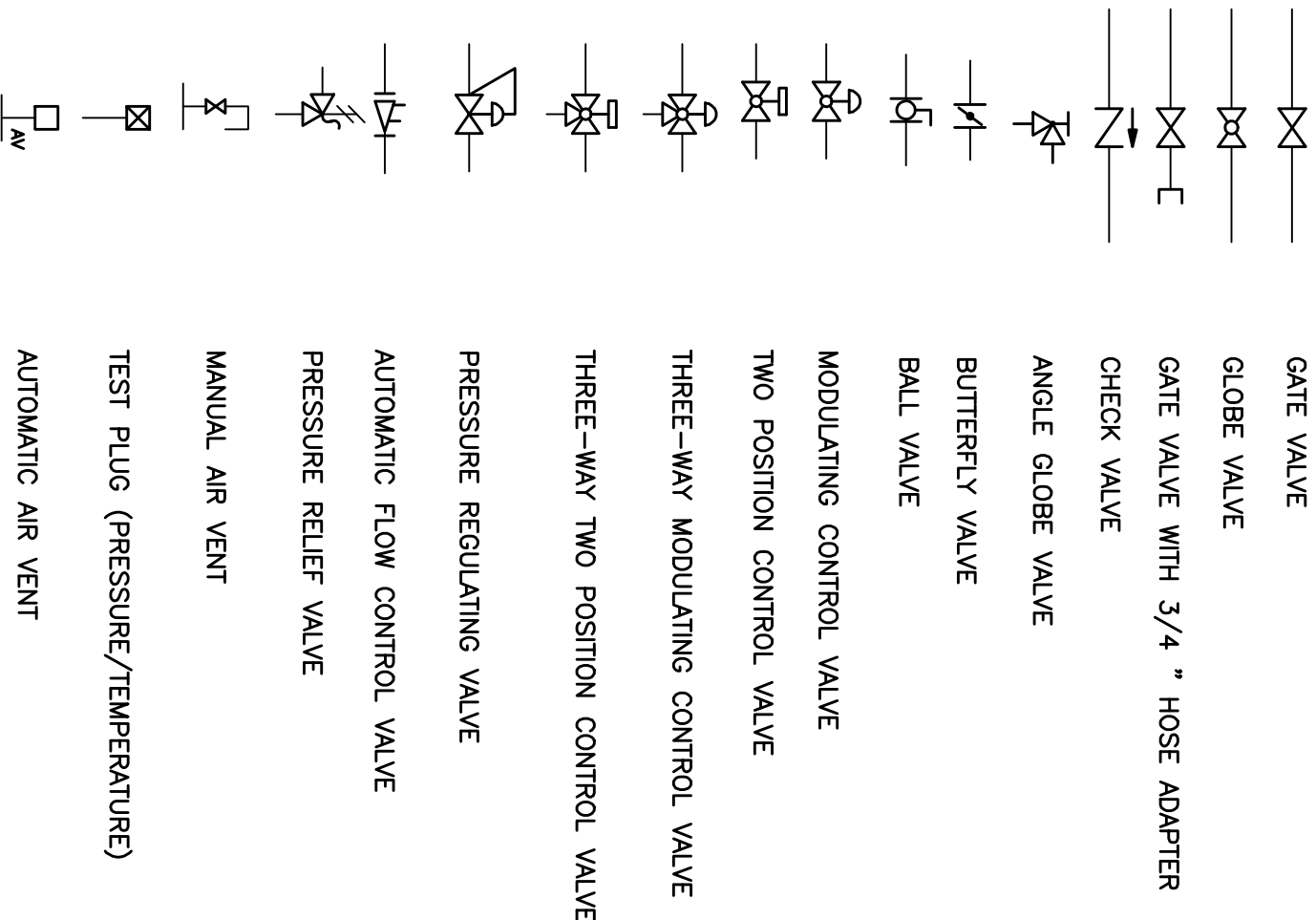
GENERAL PLUMBING SYMBOLS



PLUMBING ABBREVIATIONS

[illegible]

PLUMBING VALVE SYMBOLS

[illegible]

VIA WESTERN NEW YORK HEALTHCARE SYSTEM
3495 BAILEY AVENUE
BUFFALO, NEW YORK 14215

URS
BUFFALO, NY.,
77 GOODELL ST.
716-856-5636

Architect

stamp

SAFETY OFFICER

DATE _____

CHIEF OF STAFF

DATE _____

ASSOCIATE MEDICAL CENTER DIRECTOR

DATE _____

Location
V.A.M.C. BATAVIA, NEW YORK

