

**NOTES:**

1. SEE PLUMBING FIXTURE SCHEDULE FOR CONNECTION SIZES.
2. PROVIDE 1/2" C.W. TUBING TO TRAP PRIMERS. TRAP PRIMERS SHALL BE PROVIDED FOR ALL SHOWERS AND FLOOR DRAINS.
3. COORDINATE PLUMBING PIPING WITH HVAC DUCTWORK AND PIPING.

TIE-IN TO EXISTING HEADERS.  
PROVIDE BALANCING VALVE  
WITH LABEL AT DCW AND DHW.

PAGE 2 FOR MECH.  
EQUIPMENT, REFER TO  
MH601 FOR CONTINUATION  
AND DETAIL 1 ON PL601

SE  $\frac{1}{1/8}$

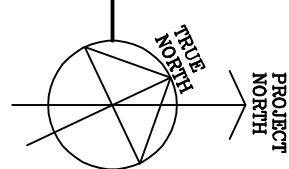
4.3  
4.4

--	--

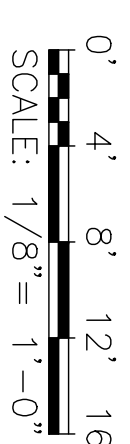
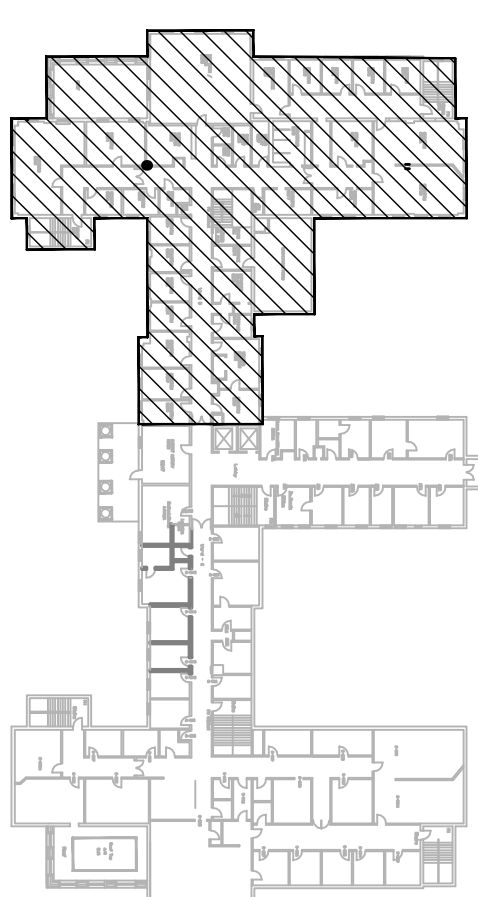
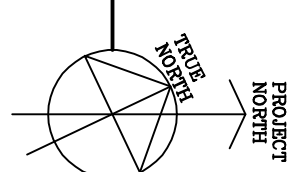
BUFFALO, N.Y.,  
77 GOODELL ST  
716-856-5636

	stam
--	------

1 SECOND FLOOR PLAN  
1/8" = 1'-0"



## KEY PLAN



BUFFALO, NEW YORK 14215

STARS

BUFFALO, N.Y.,  
77 GOODELL ST  
716-856-5636

### Architect

stam

**SAFETY OFFICER**

DA


**OF STAFF**

DATE \_\_\_\_\_

<p>Drawing Title</p> <p>SECOND FLOOR ("WARD B") PLUMBING PLAN</p>	<p>MEDICAL CENTER DIRECTOR</p>	<p>ASSOCIATE MEDICAL CENTER DIRECTOR</p>
---	--------------------------------	--

Project Name	RENOVATION OF BLDG #1 2ND FLOOR, B-WARD		
Building Number	1	Checked	Drawn
Location	V.A.M.C. BATAVIA, NEW YORK		

Date	JULY 2, 2010 (UPDATED 10/07/10)
Station No.	528
	09-352 PL-201



Office of Facilities

 Department of  
Veterans Affairs