

three inches = one foot

one and one-half inch = one foot

one inch = one foot

three-quarters inch = one foot

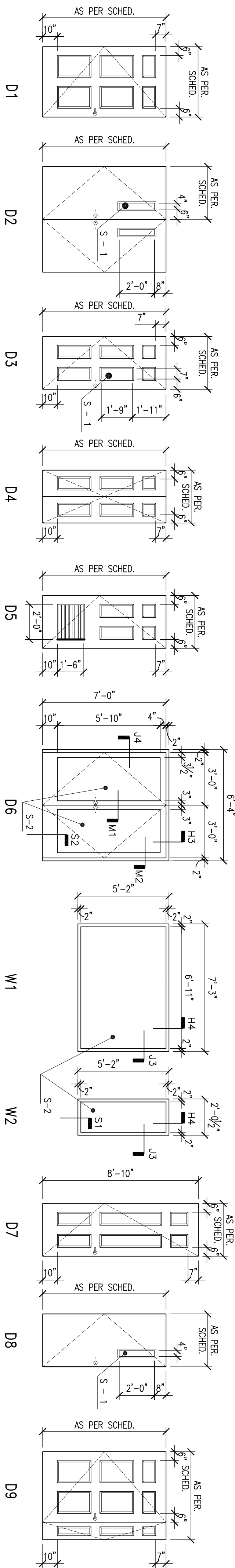
one-half inch = one foot

three-eighths inch = one foot

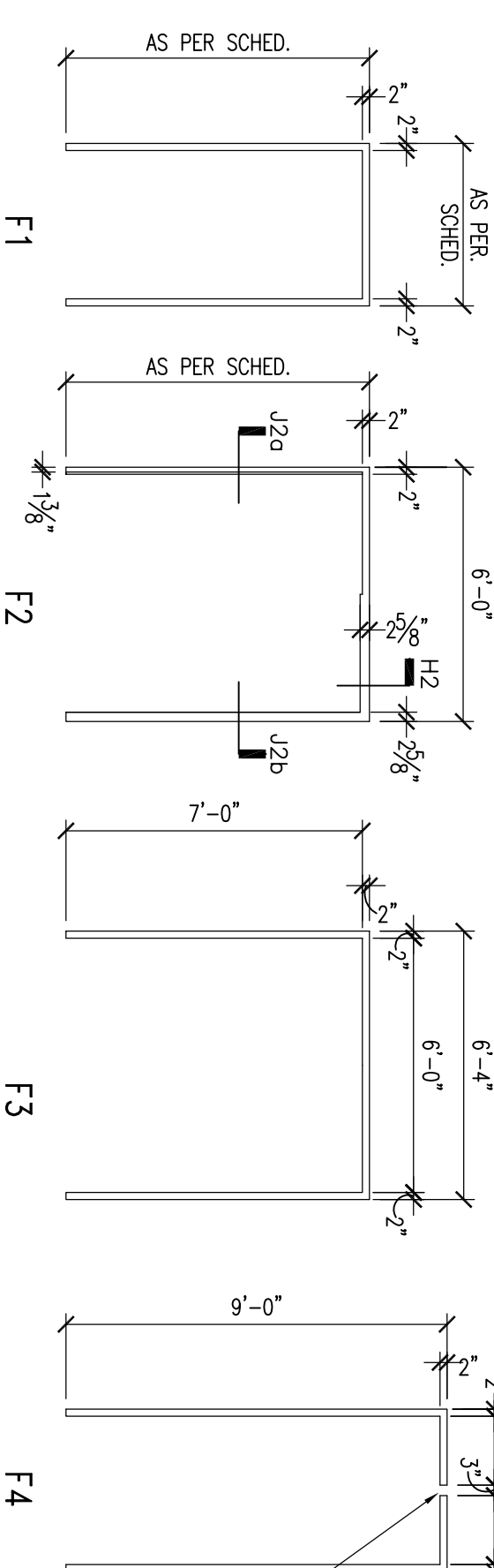
one-quarter inch = one foot

one-eighth inch = one foot

DOOR ELEVATION TYPES



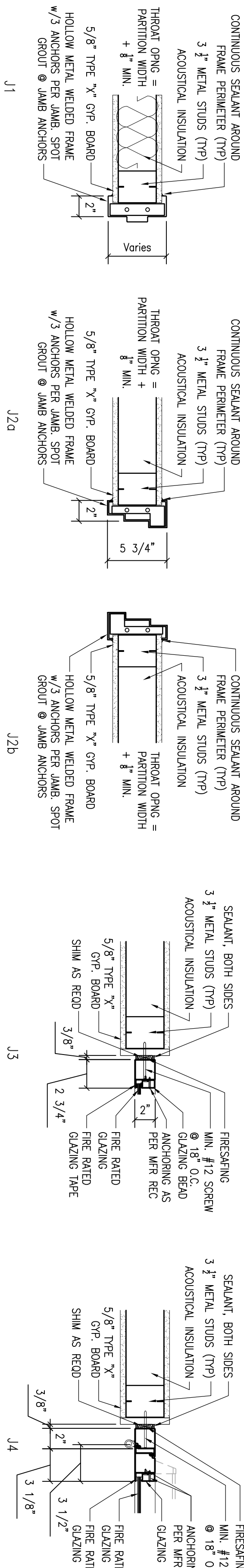
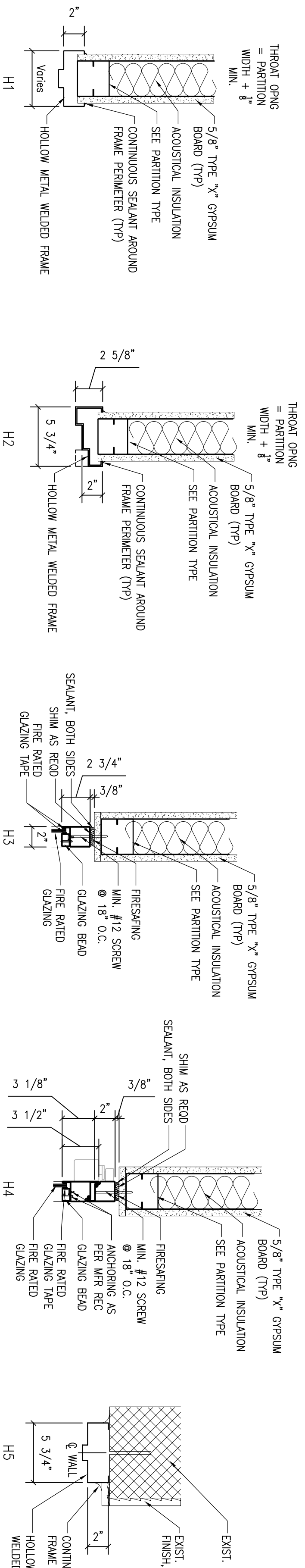
DOOR FRAME TYPES



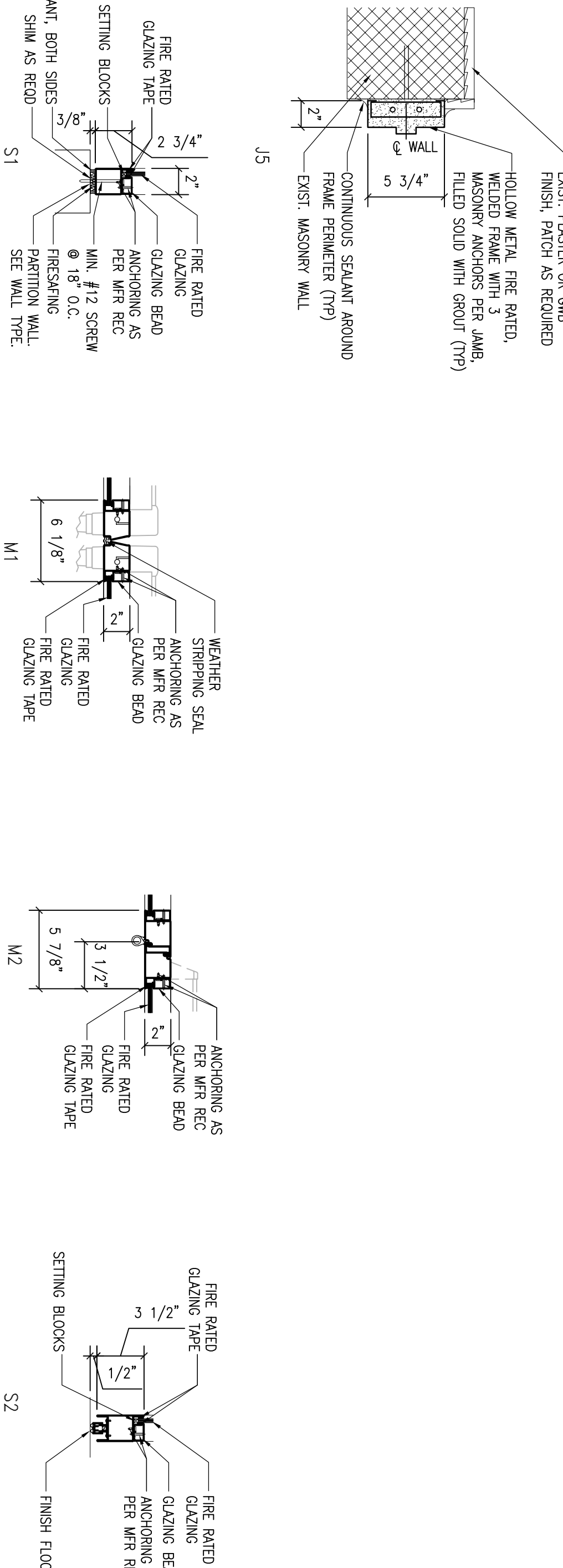
*GLASS TYPES

1 - 2 SAFETY INSULATED
5 - 1 1/4" LAMINATED (TEMPERED)
5 - 2 FIRE RATED IMPACT RESISTANT

1 DOOR /LITE ELEVATIONS & FRAME TYPES



2 JAMB & HEAD DETAILS



DOOR /LITE SCHEDULE

DOOR				FRAME				MISC.	REMARKS
DOOR NUMBER	DOOR TYPE	MATERIAL	FINISH	THICKNESS	WIDTH	HEIGHT	LABEL RATING		
1	D2	HM	PAIN	1 3/4"	2 (3'-0")	7'-0"	C	HM PAINT F2	C H2, J2d/b
2	D3	WD	STAIN	1 3/4"	3'-0"	7'-0"	C	HM PAINT F1	C H1, J1
3	D1	WD	STAIN	1 3/4"	2'-10"	7'-0"	C	HM PAINT F4	C H1, J1
4	D7	WD	STAIN	1 3/4"	3'-6"	8'-10"	C	HM PAINT F4	C H1, J1
5	D9	WD	STAIN	1 3/4"	5'-0"	7'-0"	C	HM PAINT F1	C H1, J1
6	D1	WD	STAIN	1 3/4"	4'-0"	7'-0"	C	HM PAINT F1	C H1, J1
7	D1	WD	STAIN	1 3/4"	2'-10"	7'-0"	C	HM PAINT F1	C H1, J1
8	D7	WD	STAIN	1 3/4"	3'-6"	8'-10"	C	HM PAINT F4	C H1, J1
9	D1	WD	STAIN	1 3/4"	3'-0"	7'-0"	C	HM PAINT F1	C H1, J1
10	D3	WD	STAIN	1 3/4"	3'-0"	7'-0"	C	HM PAINT F1	C H1, J1
11	D3	WD	STAIN	1 3/4"	3'-6"	8'-10"	C	HM PAINT F1	C H1, J1
12	D5	WD	STAIN	1 3/4"	4'-0"	7'-0"	C	HM PAINT F1	C H1, J1
13	D1	WD	STAIN	1 3/4"	3'-0"	7'-0"	C	HM PAINT F1	C H1, J1
14	D1	WD	STAIN	1 3/4"	3'-0"	7'-0"	C	HM PAINT F1	C H1, J1
15	D1	WD	STAIN	1 3/4"	3'-0"	7'-0"	C	HM PAINT F1	C H1, J1
16	D7	WD	STAIN	1 3/4"	3'-6"	8'-10"	C	HM PAINT F4	C H1, J1
17	D1	WD	STAIN	1 3/4"	3'-6"	8'-10"	C	HM PAINT F1	C H1, J1
18	D1	WD	STAIN	1 3/4"	2'-10"	7'-0"	C	HM PAINT F1	C H1, J1
19	D1	WD	STAIN	1 3/4"	4'-0"	7'-0"	C	HM PAINT F1	C H1, J1
20	D7	WD	STAIN	1 3/4"	3'-6"	8'-10"	C	HM PAINT F4	C H1, J1
21	D3	WD	STAIN	1 3/4"	3'-0"	7'-0"	C	HM PAINT F1	C H1, J1
22	D7	HM	STAIN	1 3/4"	3'-6"	8'-10"	C	HM PAINT F4	C H1, J1
23	D1	WD	STAIN	1 3/4"	4'-0"	7'-0"	C	HM PAINT F1	C H1, J1
24	D1	WD	STAIN	1 3/4"	2'-10"	7'-0"	C	HM PAINT F1	C H1, J1
25	D1	WD	STAIN	1 3/4"	2'-10"	7'-0"	C	HM PAINT F1	C H1, J1
26	D1	WD	STAIN	1 3/4"	4'-0"	7'-0"	C	HM PAINT F1	C H1, J1
27	D7	WD	STAIN	1 3/4"	3'-6"	8'-10"	C	HM PAINT F4	C H1, J1
28	D4	WD	STAIN	1 3/4"	3'-0"	7'-0"	C	HM PAINT F1	C H1, J1
29	D1	WD	STAIN	1 3/4"	4'-0"	7'-0"	C	HM PAINT F1	C H1, J1
30	D7	WD	STAIN	1 3/4"	3'-6"	8'-10"	C	HM PAINT F4	C H1, J1
31	D7	WD	STAIN	1 3/4"	3'-6"	8'-10"	C	HM PAINT F1	C H1, J1
32	D1	WD	STAIN	1 3/4"	4'-0"	7'-0"	C	HM PAINT F1	C H1, J1
33	D7	WD	STAIN	1 3/4"	3'-6"	8'-10"	C	HM PAINT F4	C H1, J1
34	D1	WD	STAIN	1 3/4"	2'-6"	7'-0"	C	HM PAINT F1	C H1, J1
35	D1	WD	STAIN	1 3/4"	2'-6"	7'-0"	C	HM PAINT F1	C H1, J1
36	D1	WD	STAIN	1 3/4"	4'-0"	7'-0"	C	HM PAINT F1	C H1, J1
37	D1	WD	STAIN	1 3/4"	2'-10"	7'-0"	C	HM PAINT F1	C H1, J1
38	D7	WD	STAIN	1 3/4"	3'-6"	8'-10"	C	HM PAINT F4	C H1, J1
39	D1	WD	STAIN	1 3/4"	4'-0"	7'-0"	C	HM PAINT F1	C H1, J1
40	D7	WD	STAIN	1 3/4"	3'-6"	8'-10"	C	HM PAINT F4	C H1, J1
41	D1	WD	STAIN	1 3/4"	2'-10"	7'-0"	C	HM PAINT F1	C H1, J1
42	D6	WD	STAIN	1 3/4"	8'-10"	7'-0"	C	HM PAINT F3	C H3, J3, S1
43	W1	—	—	—	7'-3"	5'-2"	C	HM PAINT W1	C H3, J3, S1
44	D1	WD	STAIN	1 3/4"	3'-6"	7'-0"	C	HM PAINT F1	C H1, J1
45	D3	WD	STAIN	1 3/4"	3'-0"	7'-0"	C	HM PAINT F1	C H1, J1
46	D1	WD	STAIN	1 3/4"	4'-0"	7'-0"	C	HM PAINT F1	C H1, J1
47	D7	WD	STAIN	1 3/4"	3'-6"	8'-10"	C	HM PAINT F4	C H1, J1
48	D1	WD	STAIN	1 3/4"	3'-6"	7'-0"	C	HM PAINT F1	C H1, J1
49	D1	WD	STAIN	1 3/4"	2'-10"	7'-0"	C	HM PAINT F1	C H1, J1
50	D7	WD	STAIN	1 3/4"	3'-6"	8'-10"	C	HM PAINT F4	C H1, J1
51	D1	WD	STAIN	1 3/4"	2'-4"	7'-0"	C	HM PAINT F1	C H1, J1
52	D9	WD	STAIN	1 3/4"	5'-0"	7'-0"	C	HM PAINT F1	C H1, J1
53	D1	WD	STAIN	1 3/4"	2'-10"	7'-0"	C	HM PAINT F1	C H1, J1
54	D7	WD	STAIN	1 3/4"	3'-6"	8'-10"	C	HM PAINT F4	C H1, J1
55	D1	WD	STAIN	1 3/4"	4'-0"	7'-0"	C	HM PAINT F1	C H1, J1
56	D7	WD	STAIN	1 3/4"	3'-6"	8'-10"	C	HM PAINT F4	C H1, J1
57	D1	WD	STAIN	1 3/4"	2'-10"	7'-0"	C	HM PAINT F1	C H1, J1
58	D3	WD	STAIN	1 3/4"	3'-6"	7'-0"	C	HM PAINT F1	C H1, J1
59	D1	WD	STAIN	1 3/4"	4'-0"	7'-0"	C	HM PAINT F1	C H1, J1
60	D1	WD	STAIN	1 3/4"	2'-10"	7'-0"	C	HM PAINT F1	C H1, J1
61	D7	WD	STAIN	1 3/4"	3'-6"	8'-10"	C	HM PAINT F4	C H1, J1
62	D1	WD	STAIN	1 3/4"	4'-0"	7'-0"	C	HM PAINT F1	C H1, J1
63	D4	WD	STAIN	1 3/4"	3'-0"	8'-10"	C	HM PAINT F1	C H1, J1
64	D7	WD	STAIN	1 3/4"	3'-6"	8'-10"	C	HM PAINT F4	C H1, J1
65	D1	WD	STAIN	1 3/4"	4'-0"	7'-0"	C	HM PAINT F1	C H1, J1
66	D7	WD	STAIN	1 3/4"	3'-6"	8'-10"	C	HM PAINT F4	C H1, J1
67	D7	WD	STAIN	1 3/4"	3'-6"	8'-10"	C	HM PAINT F4	C H1, J1
68	D1	WD	STAIN	1 3/4"	4'-0"	7'-0"	C	HM PAINT F1	C H1, J1
69	D1	WD	STAIN	1 3/4"	2'-10"	7'-0"	C	HM PAINT F1	C H1, J1
70	D7	WD	STAIN	1 3/4"	3'-6"	8'-10"	C	HM PAINT F4	C H1, J1
71	D1	WD	STAIN	1 3/4"	3'-0"	7'-0"	C	HM PAINT F1	C H1, J1
72	D5	HM	PAIN	1 3/4"	3'-0"	7'-0"	C	HM PAINT F1	C H1, J1
73	D5	HM	PAIN	1 3/4"	3'-0"	7'-0"	C	HM PAINT F1	C H1, J1
74	W2	—	—	—	2'-0 1/2"	5'-2"	C	HM PAINT W2	C H3, J3, S1

ABBREVIATIONS:

DOOR CONSTRUCTION:				DOOR FINISH & FINISH:				DOOR FRAME:			
ALUM	ALUMINUM DOOR	PAINT	PAINTED FINISH	A	2 HOUR FIRE RESISTANCE RATING	HM	HOLLOW METAL FRAME (PAINT)	WD	WOOD FRAME (STAIN)	AL	ALUMINUM
WD	6 PANEL SOLID WOOD DOOR	STAIN	STAINED FINISH	B	1 1/2 HOUR FIRE RESISTANCE RATING	WD	WOOD FRAME (STAIN)	AL	ALUMINUM		
WC	6 PANEL SOLID MASONITE DOOR			C	3/4 HOUR FIRE RESISTANCE RATING						
HM	FLUSH-INSET HOLLOW METAL										

NOTES:
1. DOOR HARDWARE - NUMBERS IN SCHEDULE INDICATE HARDWARE SET NUMBER AS INDICATED IN SPECIFICATION SECTION 08710.

Drawing Title	Project Title	Date
DOOR SCHEDULE	RENOVATION OF BLDG. #1, 2ND FLOOR, B-WARD	JULY 2, 2010 (UPDATED 10/07/10)
MEDICAL CENTER DIRECTOR	Building Number	Station No.
ASSOCIATE MEDICAL CENTER DIRECTOR	Location	558
	09-352 AS-601	
	Office of Facilities	
	Department of Veterans Affairs	