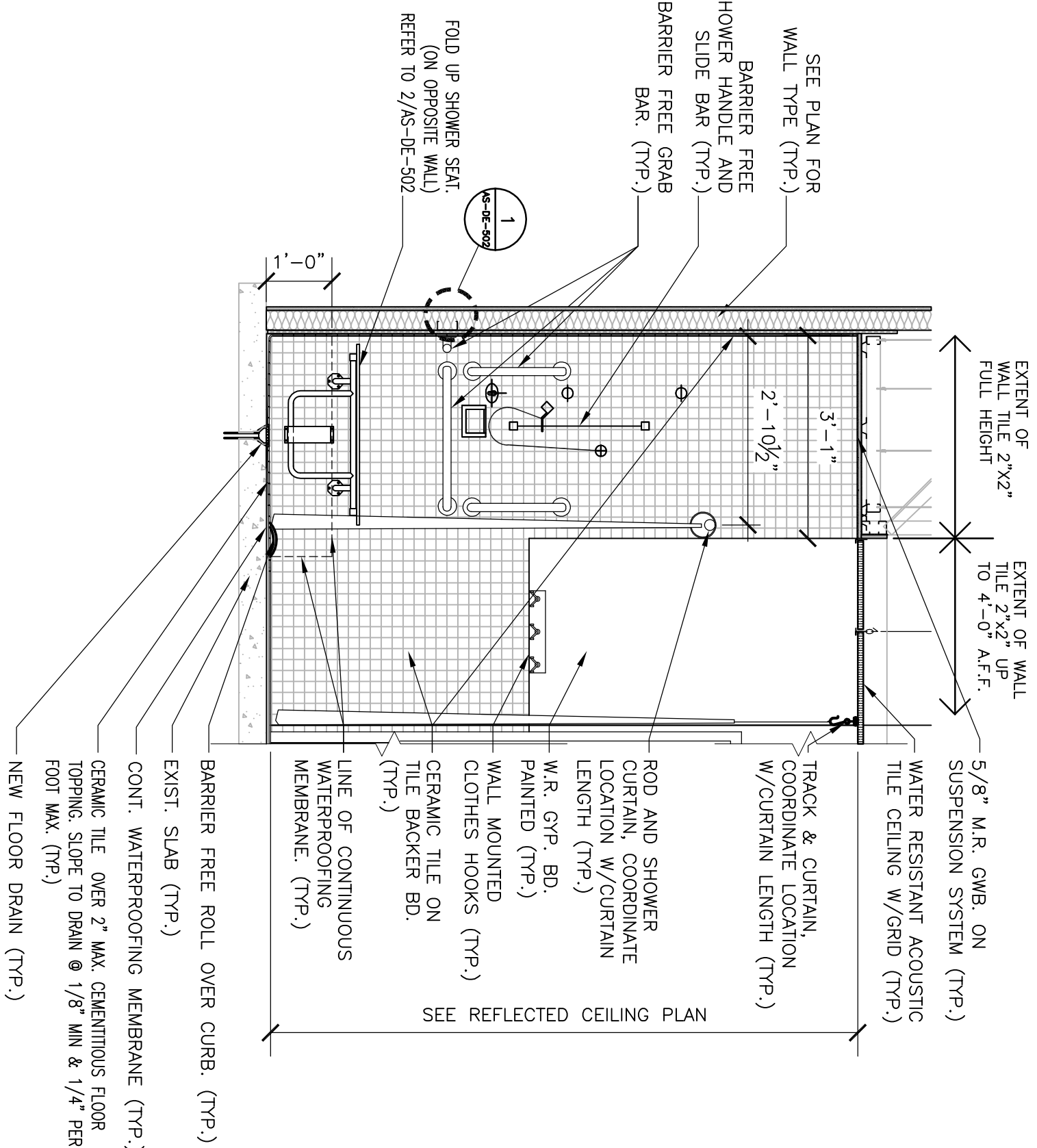
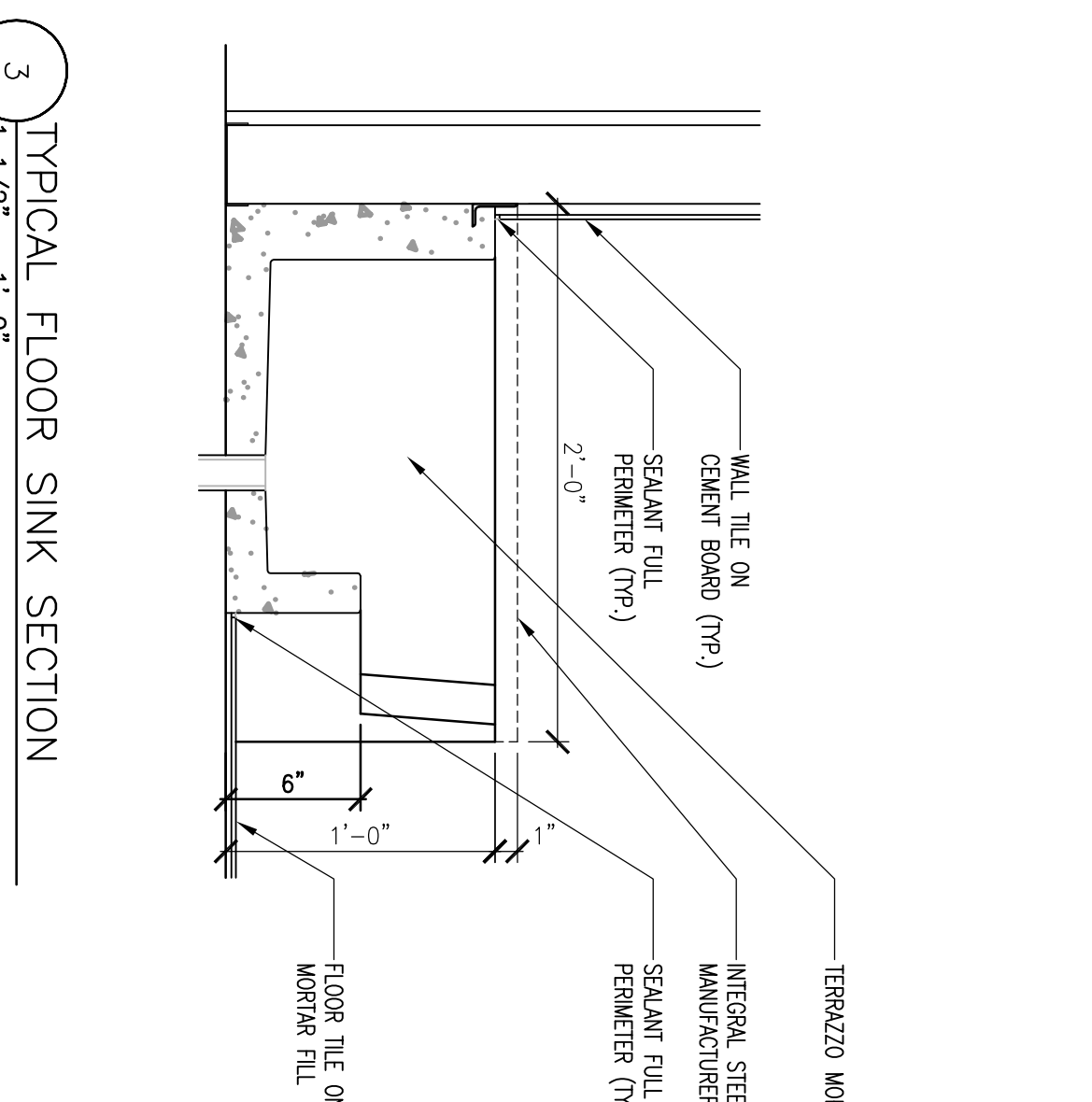


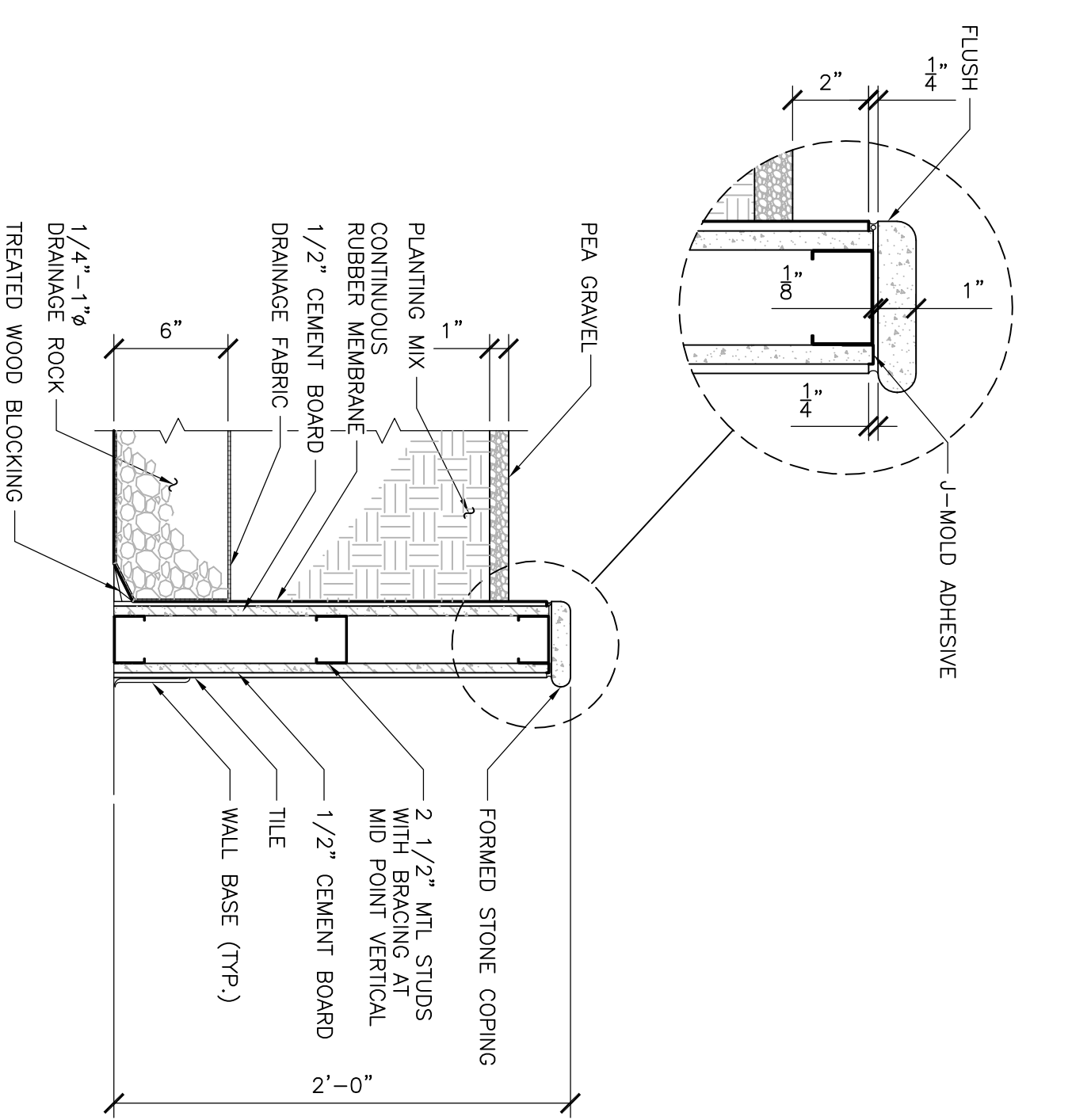
1 TYPICAL TUB ROOM SHOWER DETAIL
1/2" = 1'-0"



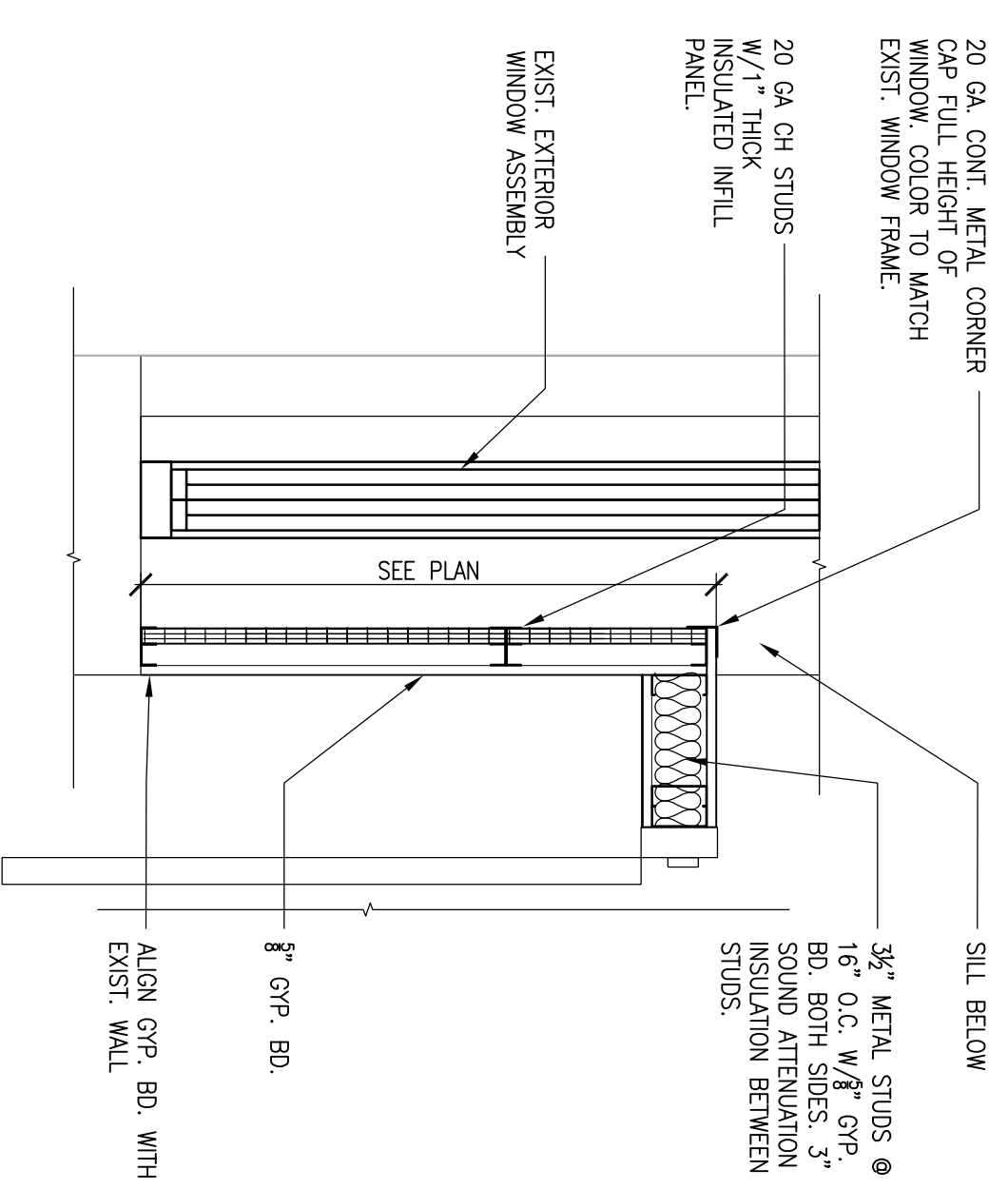
2 TOILET B132 SHOWER DETAIL
1/2" = 1'-0"



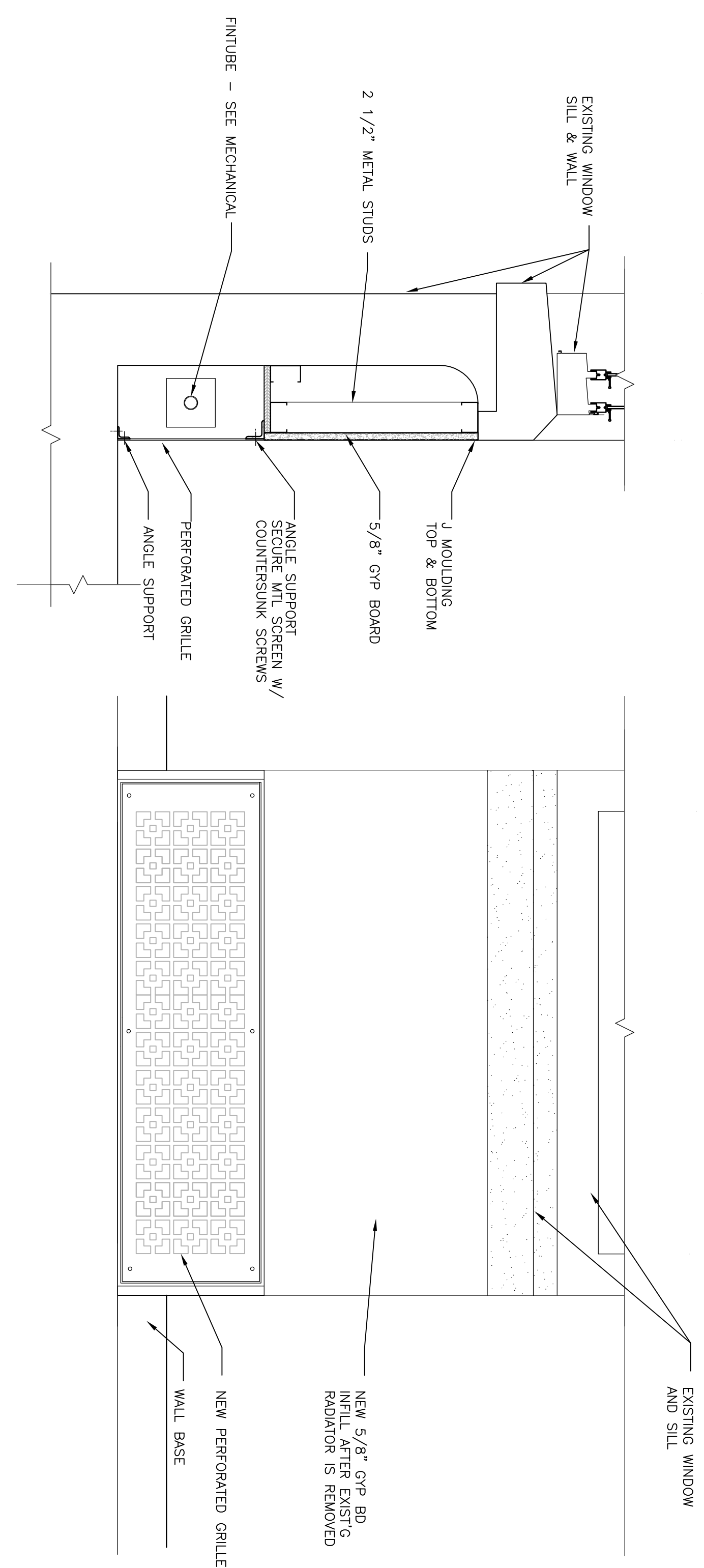
3 TYPICAL FLOOR SINK SECTION



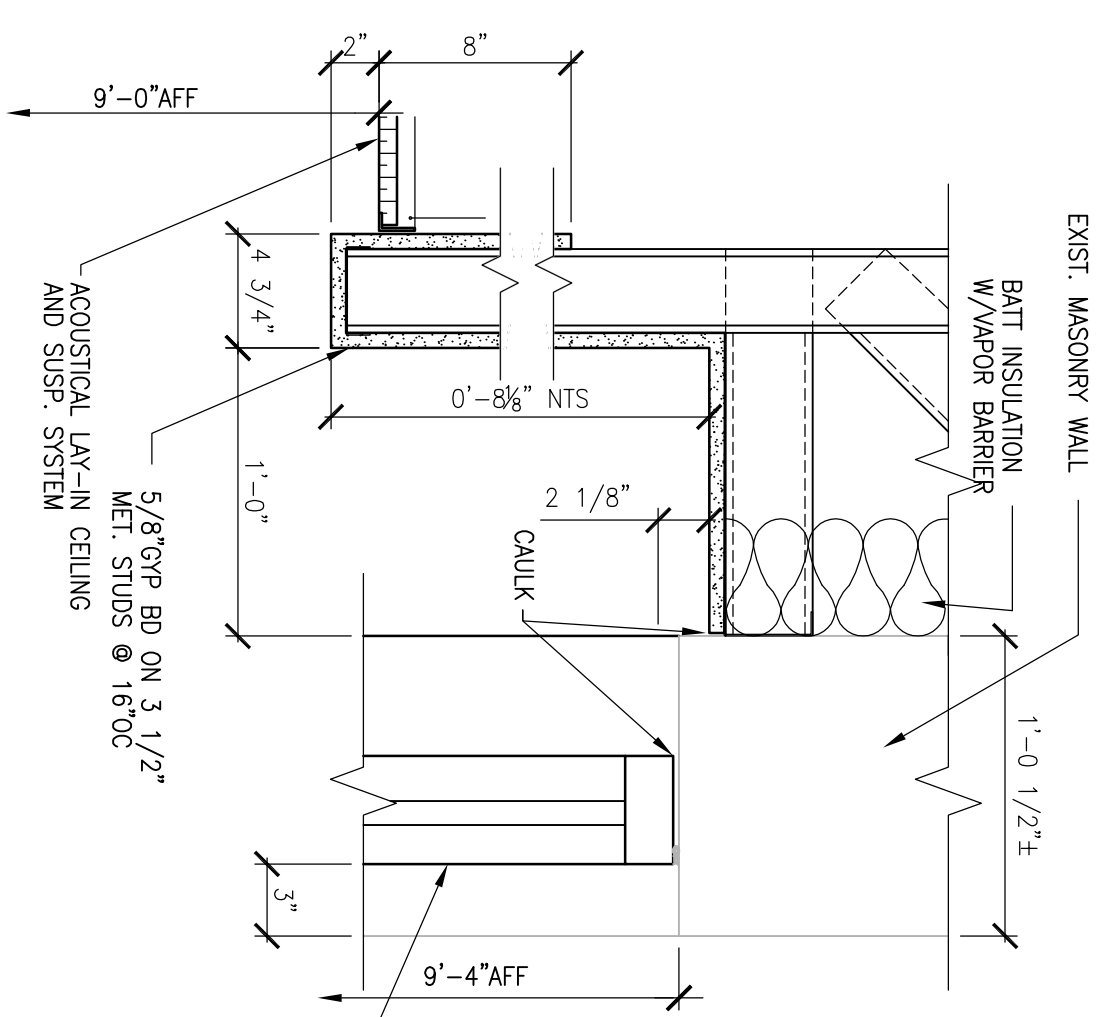
4 PLANTER DETAIL
1 1/2" = 1'-0"



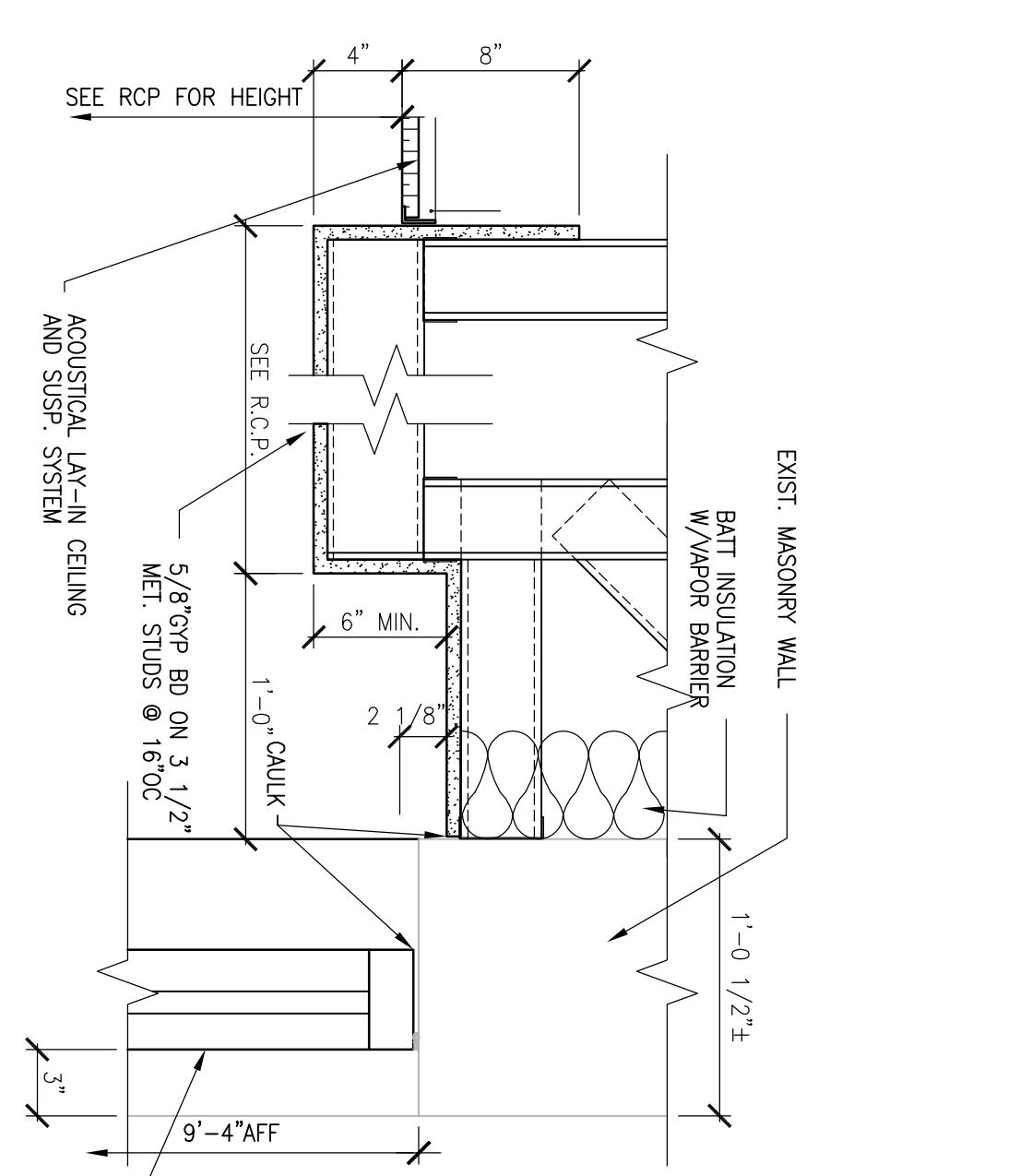
5 TYPICAL WALL SECTION @ WINDOW
1" = 1'-0"



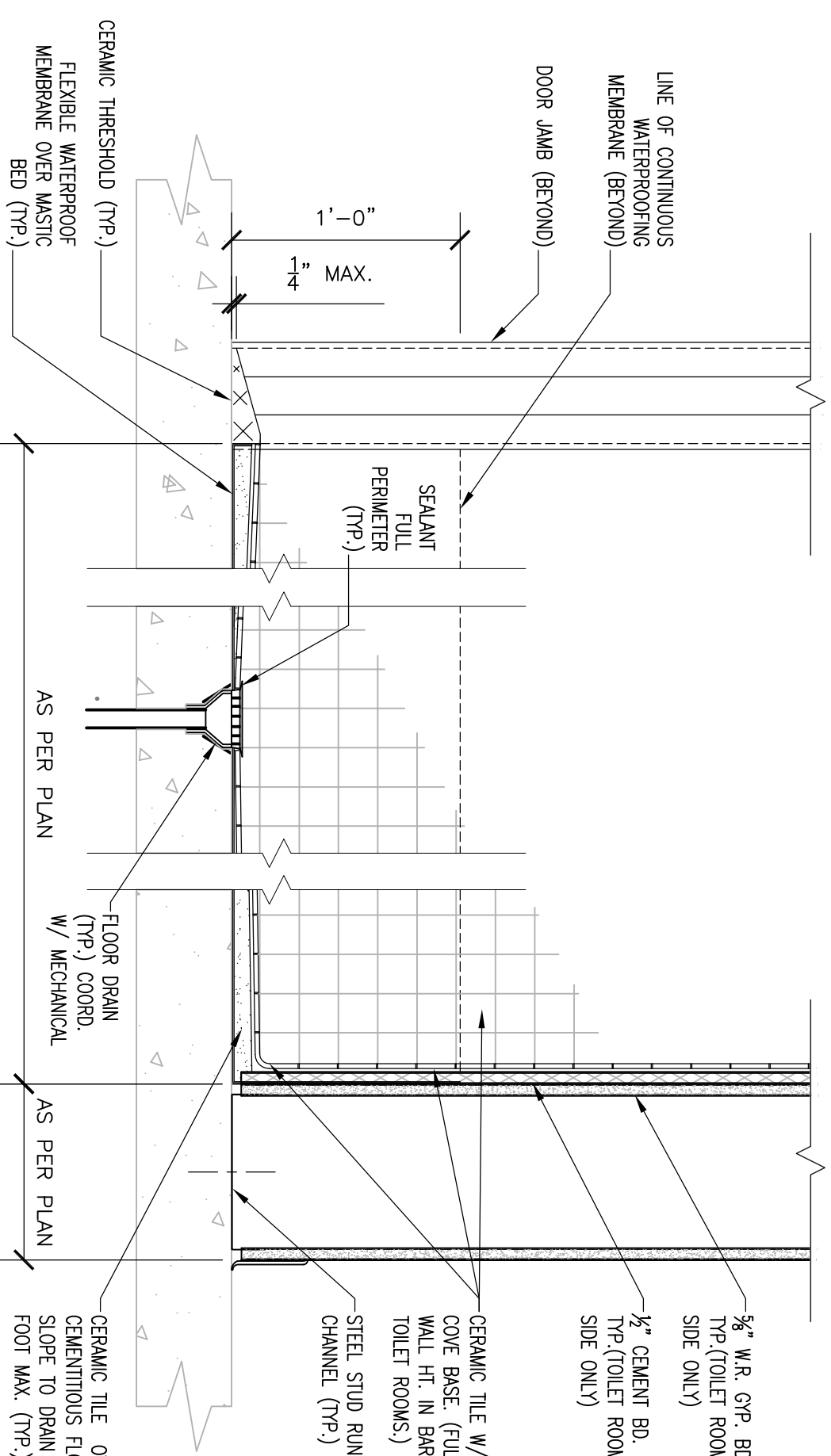
6 TYPICAL WALL SECTION @ WINDOW
1 1/2" = 1'-0"



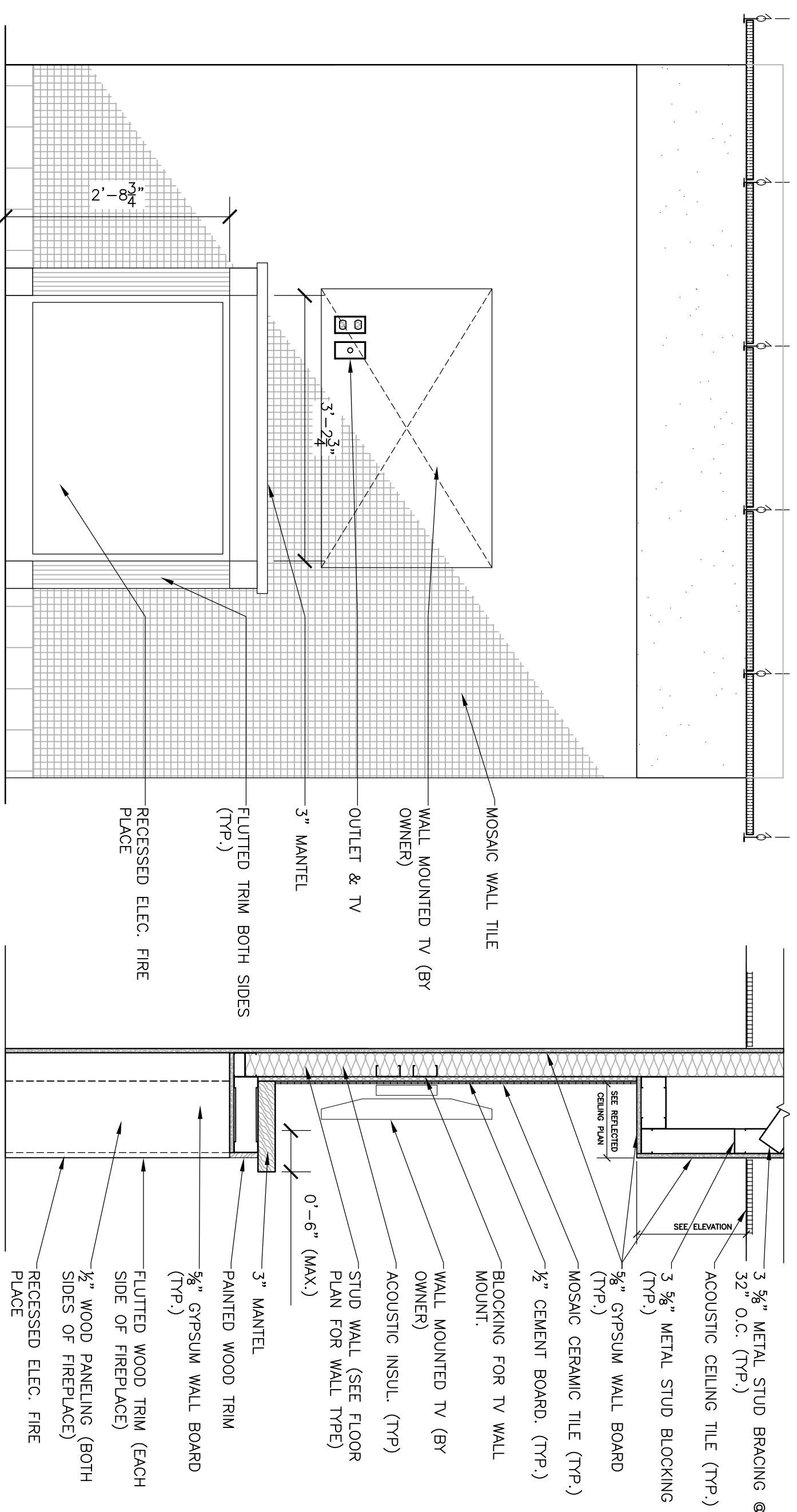
8 TYPICAL SOFFIT DETAIL @ WINDOW
1'1/2" = 1'-0"



9 TYPICAL SOFFIT DETAIL @ WINDOW
1 1/2" = 1'-0"



10 TYPICAL SECTION THRU BARIATRIC TOILET RM. FLOOR
1' 1/2" = 1'-0"



7 ELEVATION & WALL SECTION @ FIRE PLACE
3/4" = 1'-0"

[illegible]

VA WESTERN NEW YORK HEALTHCARE SYSTEM
3495 BAILEY AVENUE
BUFFALO, NEW YORK 14215

URS
BUFFALO, NY.,
77 GOODELL ST
716-856-5636

Architect

amp

CARDIOLOGY	DATE	ENGINEERING MA
INFECTION CONTROL	DATE	CARELINE MANA
SAFETY OFFICER	DATE	CHIEF OF STAFF

Drawing	AR	MEDICAL	ASSOCIATION
---------	----	---------	-------------

ARCHITECTURAL DETAILS

Project Title	RENOVATION OF 1 2ND FLOOR, B-2	
Building Number		Checked JAC
Location	V.A.M.C. BATAVIA, NEW YORK	

Date	JULY 2
Station No.	528
	09-34

The seal of the Office of Facilities is a square divided into four quadrants by a diagonal cross. The top-left and bottom-right quadrants are white, while the top-right and bottom-left quadrants are gray. Each white quadrant contains a white circle. A diagonal banner with a black border runs from the top-left to the bottom-right, bearing the text "Office of Facilities" in a black serif font.

 Department of
Veterans Affairs