

three inches = one foot

one and one-half inch = one foot

one inch = one foot

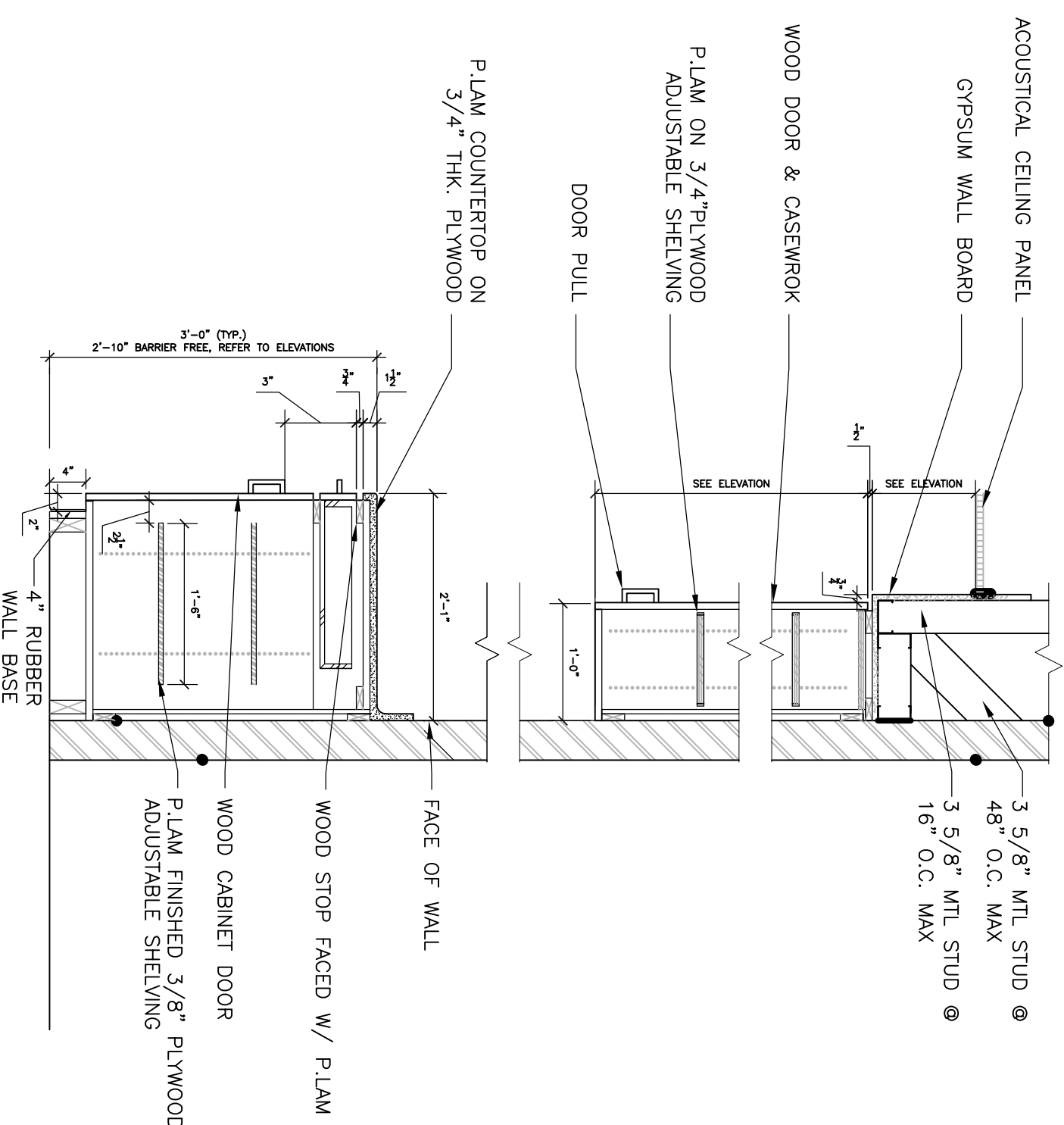
three-quarters inch = one foot

one-half inch = one foot

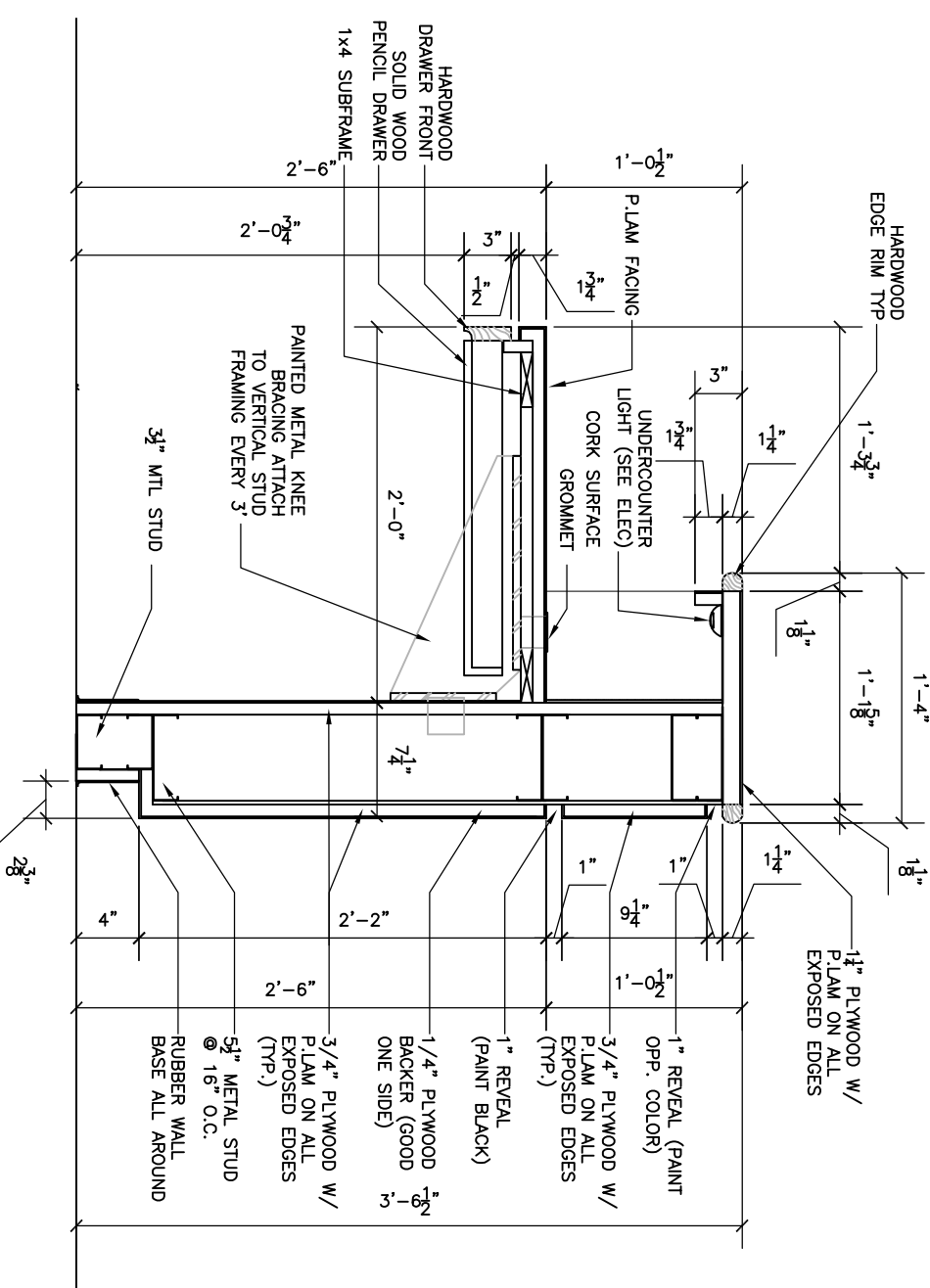
three-eighths inch = one foot

one-quarter inch = one foot

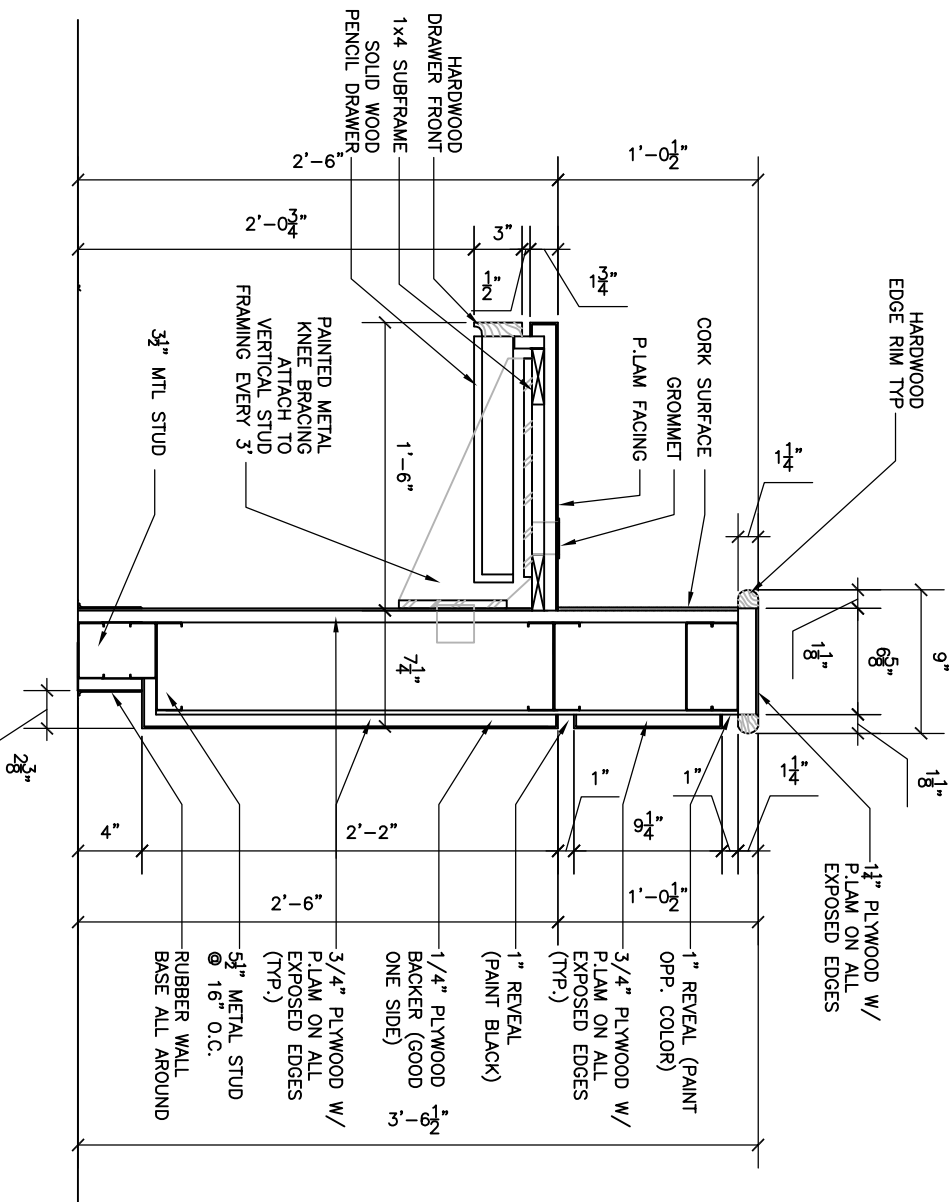
one-eighth inch = one foot



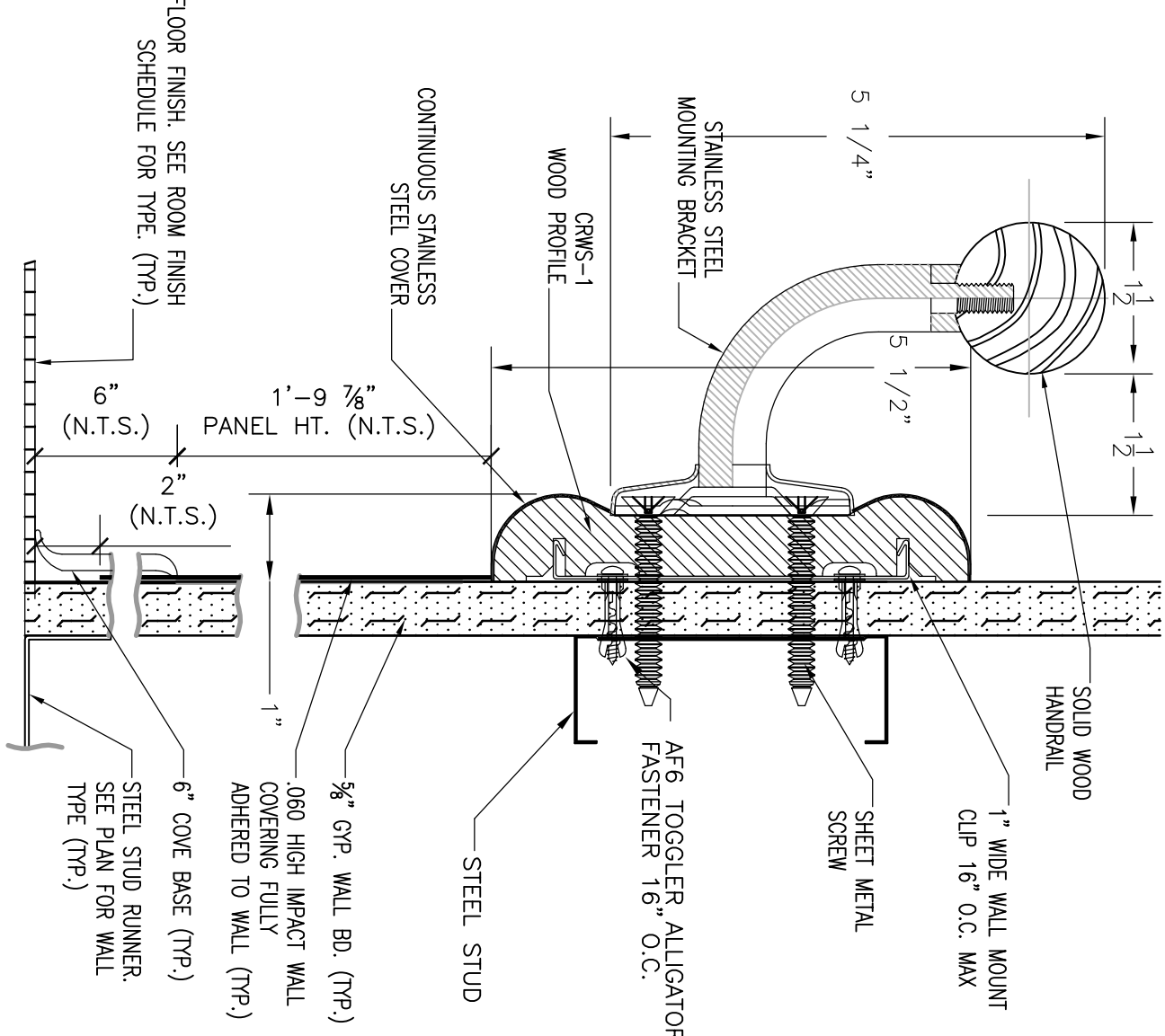
1 CASEWORK SECTION
3/4" = 1'-0"



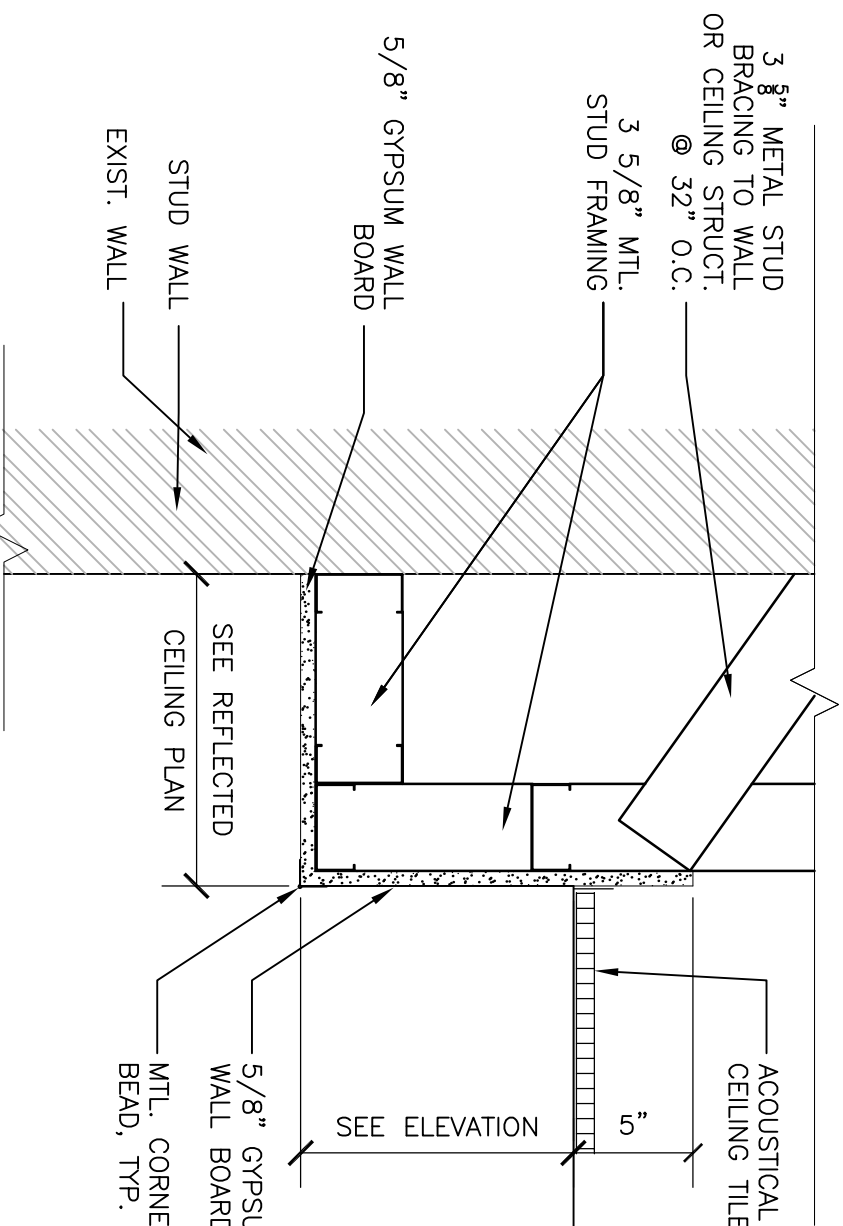
2 UNIT COORD. DESK SECTION
1" = 1'-0"



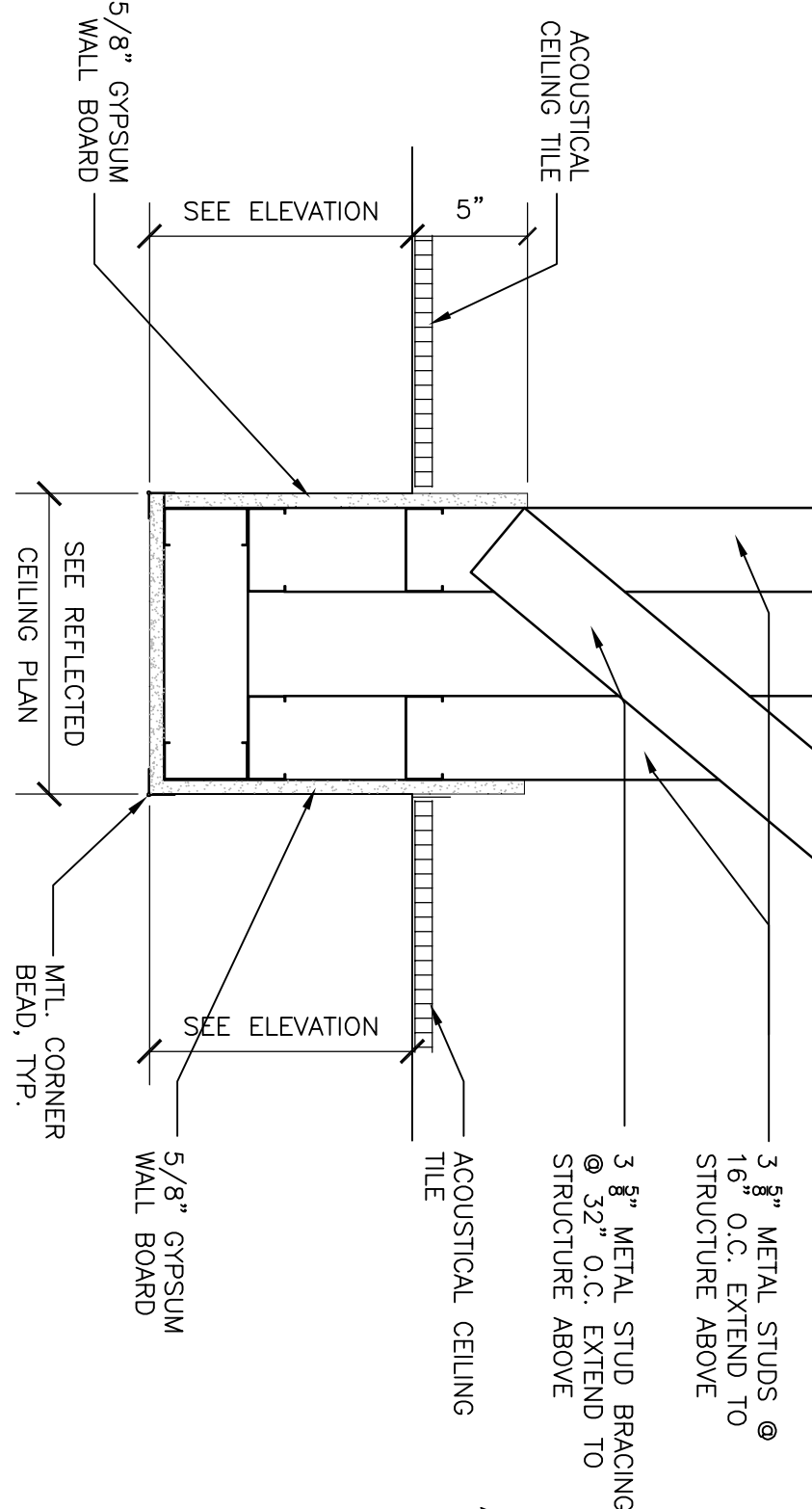
3 TYP. CHARTING STATION SECTION
1" = 1'-0"



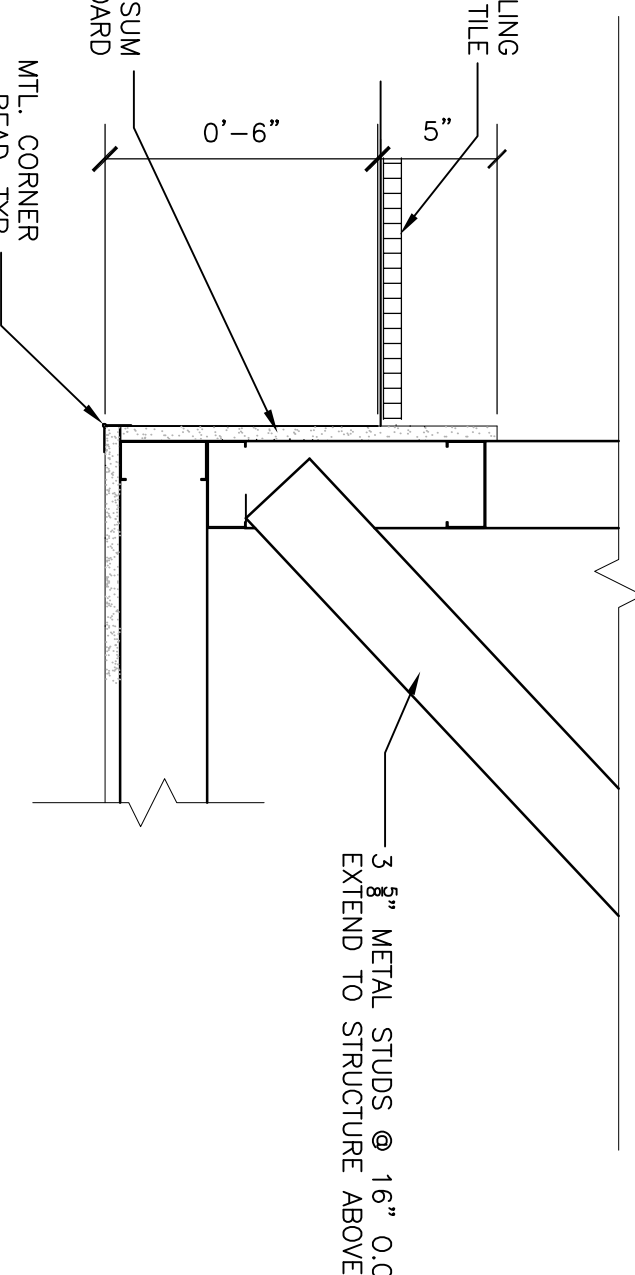
4 HAND/ CRASH RAIL DETAIL
5/8" = 1'-0"



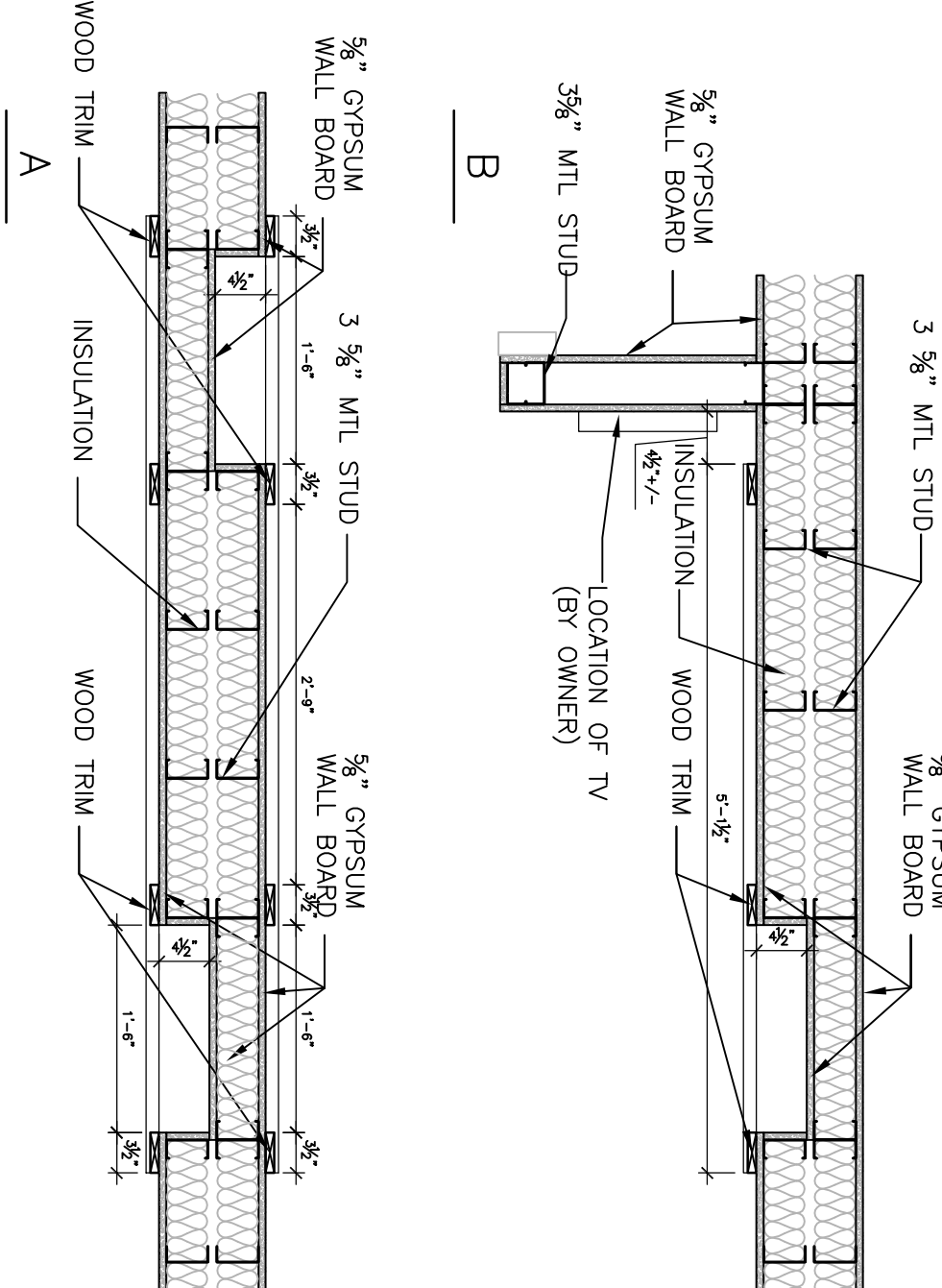
5 SOFFIT DETAIL
1 1/2" = 1'-0"



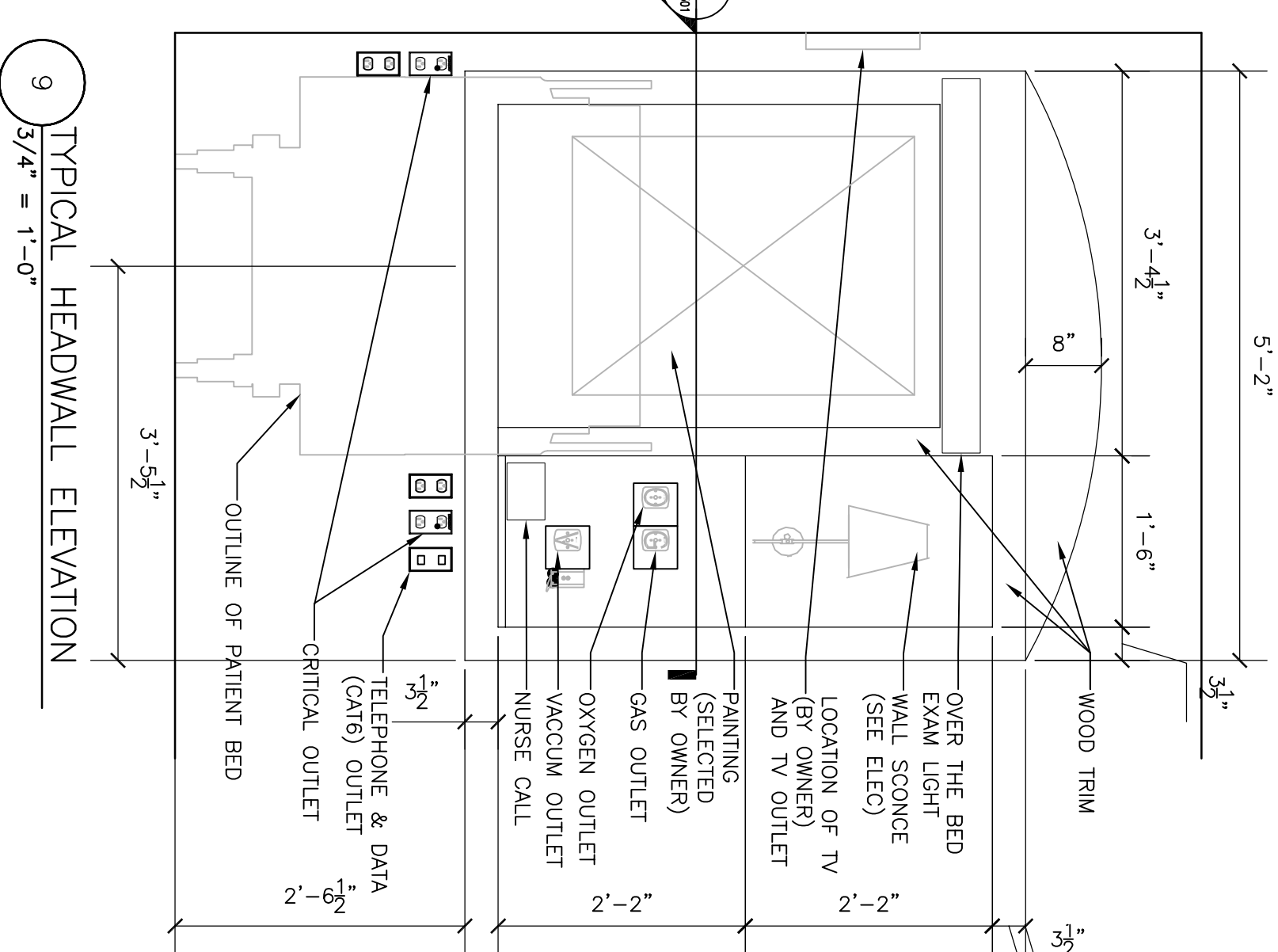
6 SOFFIT DETAIL
1 1/2" = 1'-0"



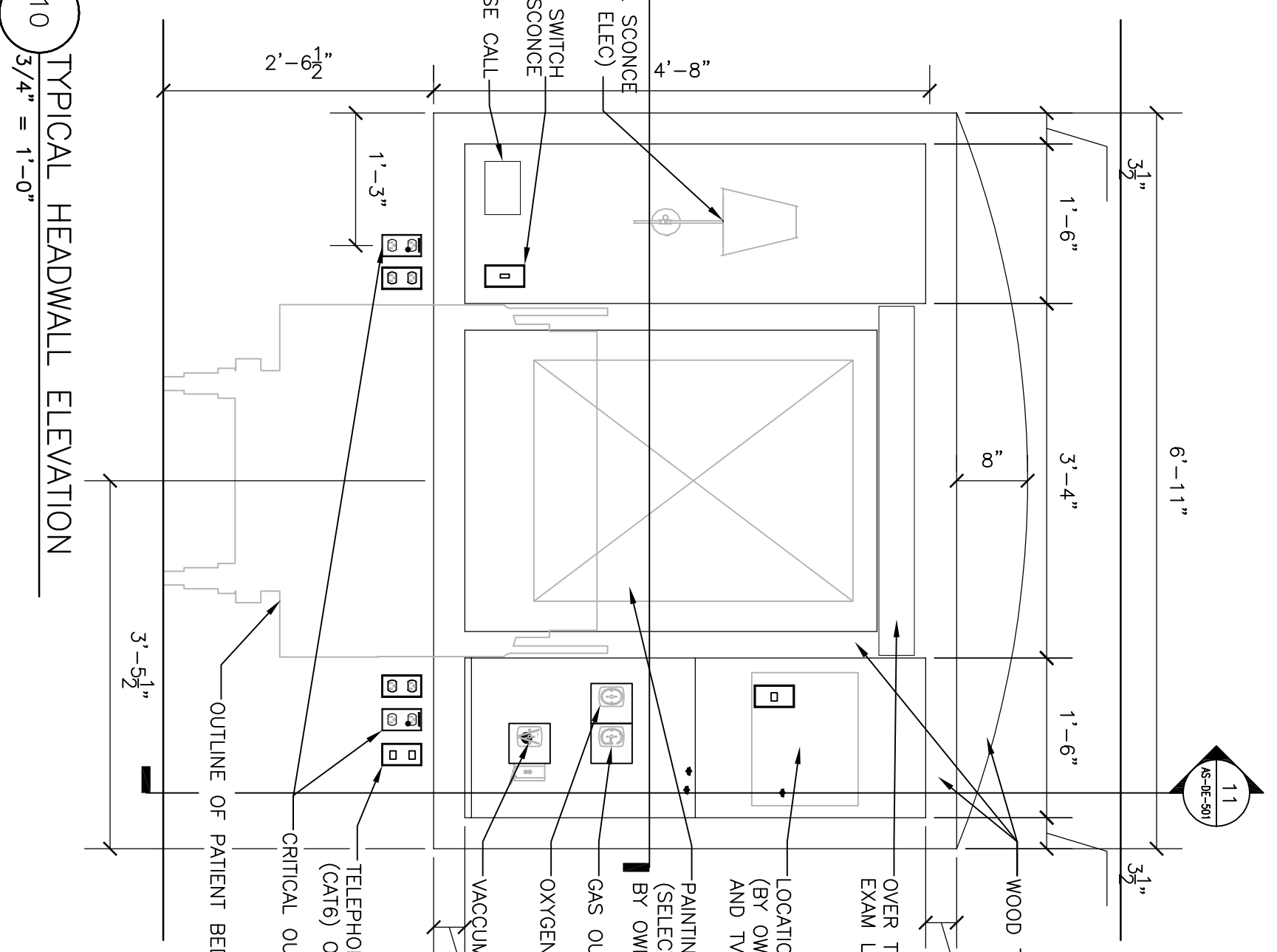
7 SOFFIT DETAIL
1 1/2" = 1'-0"



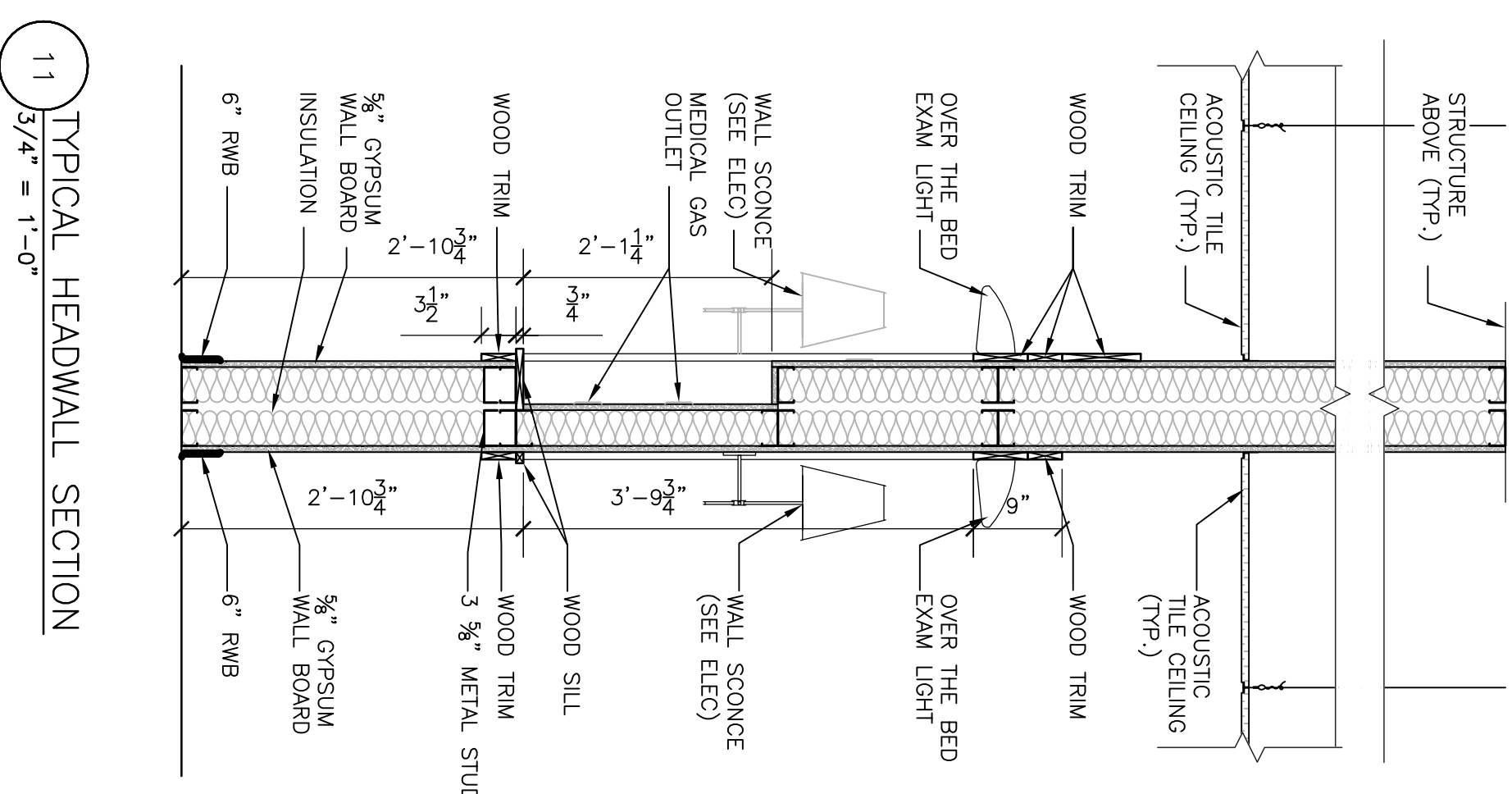
8 TYPICAL HEADWALL PLANS
3/4" = 1'-0"



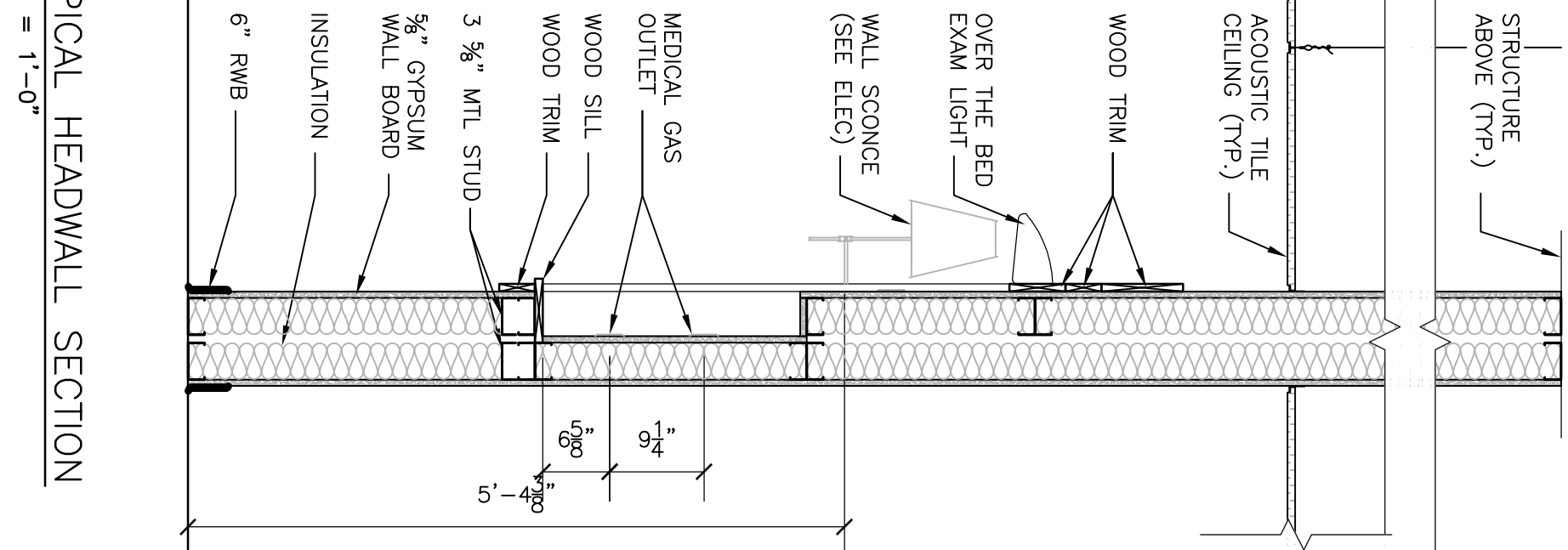
9 TYPICAL HEADWALL ELEVATION
3/4" = 1'-0"



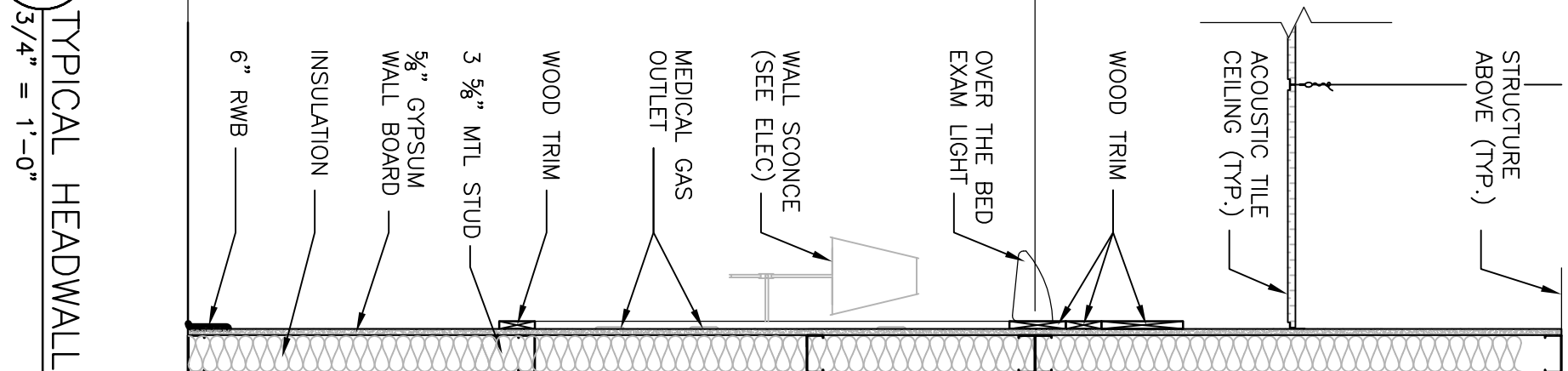
10 TYPICAL HEADWALL ELEVATION
3/4" = 1'-0"



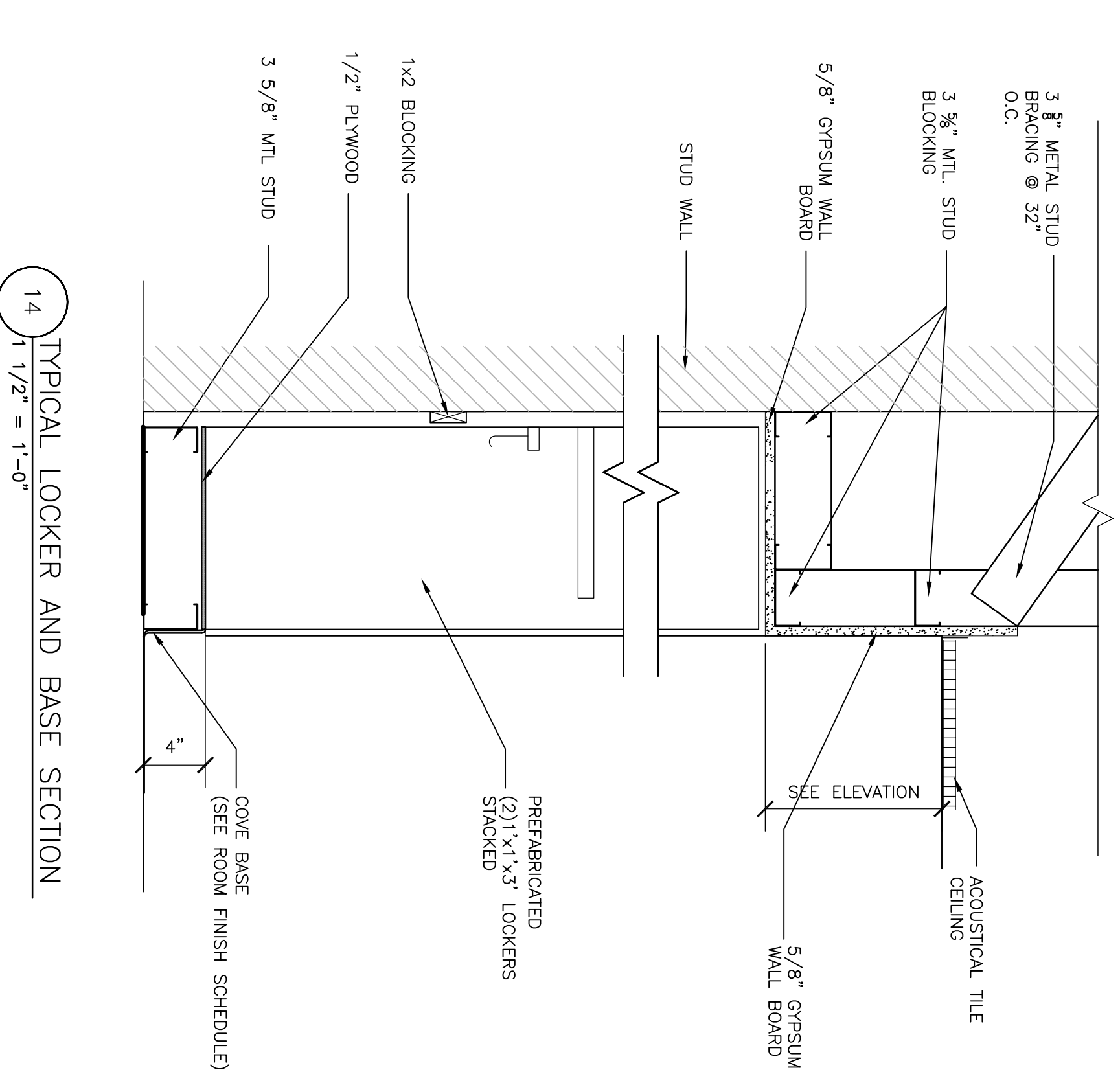
11 TYPICAL HEADWALL SECTION
3/4" = 1'-0"



12 TYPICAL HEADWALL SECTION
3/4" = 1'-0"



13 TYPICAL HEADWALL SECTION
3/4" = 1'-0"



14 TYPICAL LOCKER AND BASE SECTION
1 1/2" = 1'-0"

100% Submission	7/02/10
90% Submission	5/27/10
60% Submission	4/22/10
Revisions	Date

VA WESTERN NEW YORK HEALTHCARE SYSTEM
3495 BAILEY AVENUE
BUFFALO, NEW YORK 14215

URS

BUFFALO, NY.,
77 GODDELL ST
716-856-5636

Architect

stamp

CARDIOLOGY	DATE	ENGINEERING MANAGER	DATE
INFECTION CONTROL	DATE	CARLINE MANAGER	DATE
SAFETY OFFICER	DATE	CHIEF OF STAFF	DATE

Drawing Title		Project Title	
CARDIOLOGY	DATE	ENGINEERING MANAGER	DATE
INFECTION CONTROL	DATE	CARLINE MANAGER	DATE
SAFETY OFFICER	DATE	CHIEF OF STAFF	DATE

Details & Sections		Project Title	
CARDIOLOGY	DATE	ENGINEERING MANAGER	DATE
INFECTION CONTROL	DATE	CARLINE MANAGER	DATE
SAFETY OFFICER	DATE	CHIEF OF STAFF	DATE

Renovation of Bldg. #1, 2nd Floor, B-Ward		Building Number	
CARDIOLOGY	DATE	ENGINEERING MANAGER	DATE
INFECTION CONTROL	DATE	CARLINE MANAGER	DATE
SAFETY OFFICER	DATE	CHIEF OF STAFF	DATE

Office of Facilities		Date	
CARDIOLOGY	DATE	ENGINEERING MANAGER	DATE
INFECTION CONTROL	DATE	CARLINE MANAGER	DATE
SAFETY OFFICER	DATE	CHIEF OF STAFF	DATE

Department of Veterans Affairs