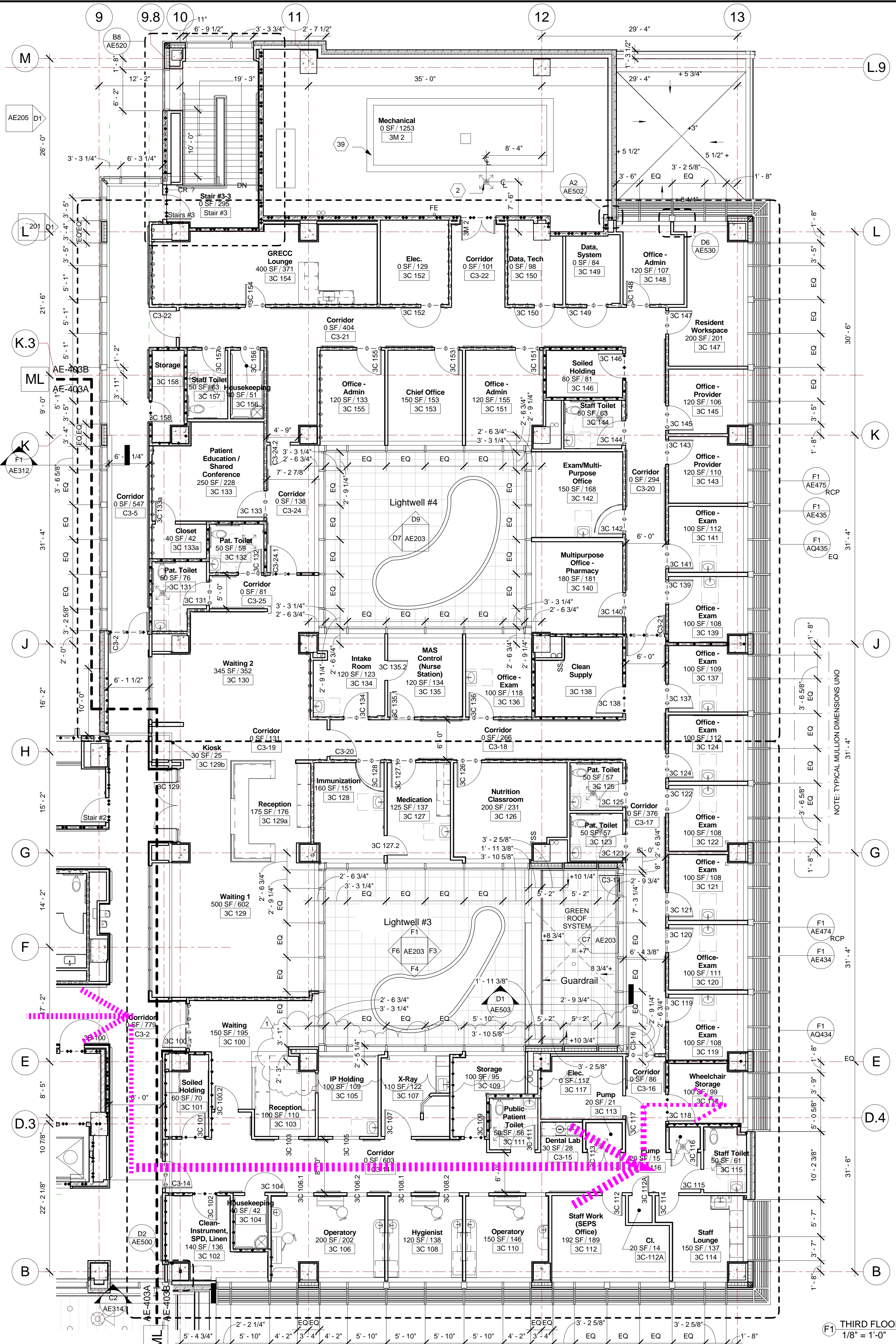


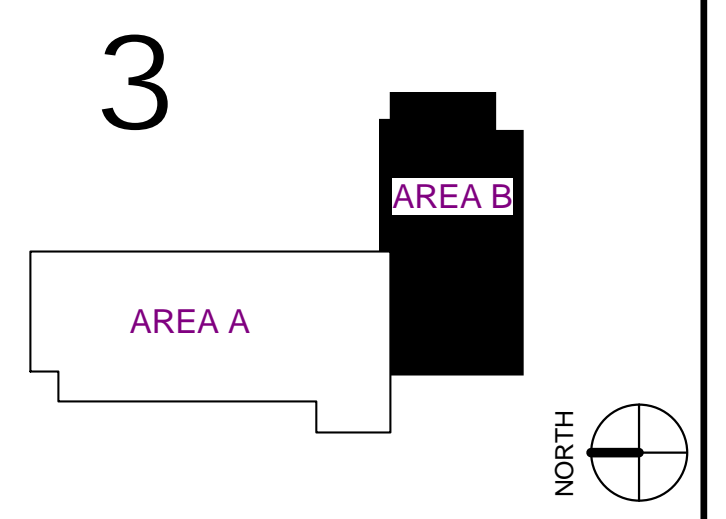
one eighth inch = one foot
 one quarter inch = one foot
 one half inch = one foot
 three quarters inch = one foot
 one inch = one foot
 one and one half inches = one foot
 two inches = one foot
 three inches = one foot
 four inches = one foot
 five inches = one foot
 six inches = one foot
 seven inches = one foot
 eight inches = one foot
 nine inches = one foot
 ten inches = one foot
 eleven inches = one foot
 twelve inches = one foot



F1 THIRD FLOOR PLAN - AREA B
 1/8" = 1'-0"

- ### KEYED NOTES - PLAN
- FLOOR DRAIN - (SEE DETAIL A7/AE411 & PLBG DWGS)
 - EXPANSION JOINT & COVER - WALL - LIMITS THE PASSAGE OF SMOKE - SEE F5 & EA530
 - CAST-IN-PLACE CONCRETE VAULT - (SEE STRUCT DWGS)
 - PROVIDE LEAD LINING ON WALLS INDICATED IN RADIATION PROTECTION SCHEDULE SHT AE702
 - PROVIDE 3/4" FIRE RETARDANT TREATED PLYWOOD ON EACH WALL FROM TOP OF BASE TO 8'-0" AFF
 - T&G WOOD SIDING - (SEE B1/F1/AE530 & SCHEDULE OF FINISHES 090600)
 - STONE VENEER - (SEE B6/B8/AE530 & SCHEDULE OF FINISHES 090600)
 - BRICK VENEER - (SEE D4/AE531 & SCHEDULE OF FINISHES 090600) (SIM)
 - PROVIDE SOLID SURFACE PANELING ALL WALLS (JOINT WELDED - SEE SCHEDULE OF FINISHES 090600)
 - LOCATE & SIZE ROUGH OPENING AS NOTED ON ELEVATOR DRAWINGS FOR HOISTWAY & HALL DOOR LOCATIONS (SEE ALSO F1/AE723)
 - GLASS PARTITION (SEE D4&F4E730/SEE SCHED OF FINISHES 090600 FOR GLASS COLOR)
 - SLIDING GLASS SERVICE WINDOW (SEE BORROW LIGHT SCHEDULE SHT AE613)
 - SPECIMEN PASS THRU COMPARTMENT - (SEE D9/AE615)
 - PACKAGE TRANSFER COMPARTMENT - (SEE B6/AE615)
 - TELLER WINDOW & DEAL TRAY - (SEE B8/AE615 & BORROW LIGHT SCHEDULE SHT AE613)
 - ALUMINUM SECURITY GRILLE - (SEE DOOR SCHEDULE SHT AE610)
 - CENTERLINES INDICATE MISC STEEL BEAMS FOR PROCEDURE LIGHT SUPPORT ABOVE CEILING
 - MISC STEEL TUBE POST (SEE C7&E8/AE541/SEE STRUCT DWGS FOR CONNECTIONS)
 - MISC STL (STL ANGLE SUPPORT) - AT PARTIAL HEIGHT WALL (SEE PH WALL TYPE ON AE701)
 - MISC STL (STL ANGLE SUPPORT) - AT SECURITY GRILLE (SEE DOOR SCHEDULE)
 - MISC STL (STL ANGLE SUPPORT) AT KNEE WALL BELOW STOREFRONT (SEE PH WALL TYPE ON AE 701) (SEE F1/AE530)
 - RATED CLOSURE BY ELEVATOR CONTRACTOR. (SEE ELEVATOR DWGS)
 - PROVIDE SMOKE SEALS: NO GAPS LARGER THAN 1/8" WHEN SLIDING DOOR IS CLOSED
 - EYE WASH STATION (SEE PLBG DWGS)
 - EXPANSION JOINT & COVER - WALL - NON-RATED - SEE F5 & EA530
 - EXPANSION JOINT & COVER - WOOD FURRING - ALL RATINGS - SEE B7/AE531
 - EXPANSION JOINT & COVER - EXTERIOR WALL - SEE D6 & F2/AE500
 - EXPANSION JOINT & COVER - EXTERIOR WALL - SEE F5 & F6/AE500
 - FIRE & SMOKE RATED CURTAIN (SEE D6/E8 & E9/AE615)
 - CENTER LINE OF FIRE & SMOKE RATED CURTAIN
 - INTEGRAL SINK IS 304-STAINLESS STEEL (SEE INTEGRAL SINK SCHEDULE SHT AE720 & SCHED OF FINISHES 090600, VV)
 - CASEWORK, SEE INTERIOR ELEVATIONS, VV
 - INTEGRAL SINK IS 304-STAINLESS STEEL (SEE INTEGRAL SINK SCHEDULE SHT AE720 & SCHED OF FINISHES 090600, VV)
 - FLOOR DRAIN - (SEE DETAIL A7/AE411 & PLBG DWGS)
 - DOWNSPOUT FROM CANOPY ROOF DRAIN

- ### GENERAL NOTES:
- FINISH FLOOR SLAB ELEVATION IS 512'-0" U.N.O.
 - EXTERIOR DIMENSIONS ARE TO THE FACE OF BRICK
 - FOR CLINIC COURTYARD HARDSCAPE SEE LANDSCAPE DWGS



FULLY SPRINKLERED

No.	Date	Revisions
1	7/21/14	RFI 170

CONSULTANTS:

STRUCTURAL ENGINEER:
 KPFF CONSULTING ENGINEERS
 1600 DES PERES ROAD, SUITE 100
 ST. LOUIS, MO 63131
 PHONE: (314) 835-0524

MECHANICAL/ELECTRICAL/PLUMBING:
 KJWW ENGINEERING CONSULTANTS
 #15 SUNNEN DRIVE, SUITE 104
 ST. LOUIS, MO 63143
 PHONE: (314) 645-1132

CODE CONSULTANT/FIRE PROTECTION:
 CODE CONSULTANTS, INC.
 2043 WOODLAND PARKWAY, SUITE 300
 ST. LOUIS, MO 63146
 PHONE: (314) 911-2633

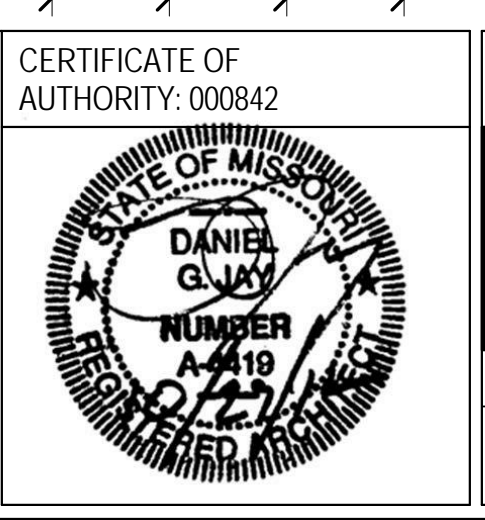
CIVIL ENGINEER:
 STOCK & ASSOCIATES CONSULTING ENGINEERS, INC.
 257 CHESTERFIELD BUSINESS PARKWAY
 CHESTERFIELD, MO 63005
 PHONE: (636) 530-9100

AUTOMATIC TRANSPORT:
 LERCH BATES INC.
 6300 S. LINCOLN STREET, SUITE 207
 LITTLETON, CO 80122
 PHONE: (720) 283-8182

ESTIMATING:
 KWAME BUILDING GROUP, INC.
 1204 WASHINGTON AVENUE, SUITE 200
 ST. LOUIS, MO 63126
 PHONE: (314) 862-5344

HAZARDOUS MATERIALS:
 ALTEC ENVIRONMENTAL CONSULTING, LLC
 P.O. BOX 17867
 SHREVEPORT, LA 71138-0867
 PHONE: (318) 687-3771

IRRIGATION CONSULTANT:
 IRI
 9502 BANYON TREE
 ST. LOUIS, MO 63126
 PHONE: (314) 610-4200



ARCHITECT:

CHRISTNER

ARCHITECTS | DESIGNERS | PLANNERS | LANDSCAPE ARCHITECTS
 168 N. MERAMEC AVENUE | ST. LOUIS, MISSOURI 63105
 TEL 314 725 2927 | FAX 314 725 2928 | CHRISTNERINC.COM

THE SEAL (S) AND SIGNATURE(S) APPLY ONLY TO THE DOCUMENT TO WHICH THEY ARE AFFIXED, AND WE EXPRESSLY DISCLAIM ANY RESPONSIBILITY FOR ALL OTHER PLANS, SPECIFICATIONS, ESTIMATES, REPORTS, OR OTHER DOCUMENTS OR INSTRUMENTS RELATING TO OR INTENDED TO BE USED FOR ANY PART OF PARTS OF THE PROJECT.
 © COPYRIGHT 2012 CHRISTNER INC.

Drawing Title
PARTIAL THIRD FLOOR PLAN - AREA B

Project Title
CLINIC BUILDING

Project Number
657-313D

Building Number
55

Location
JEFFERSON BARRACKS DIVISION

Date
20 JANUARY 2012

Checked
WAS

Drawn
JLG

Approved: Project Director
Todd Sanders

Office of
 Construction
 and Facilities
 Management

Department of
 Veterans Affairs

DWG 124 OF 219