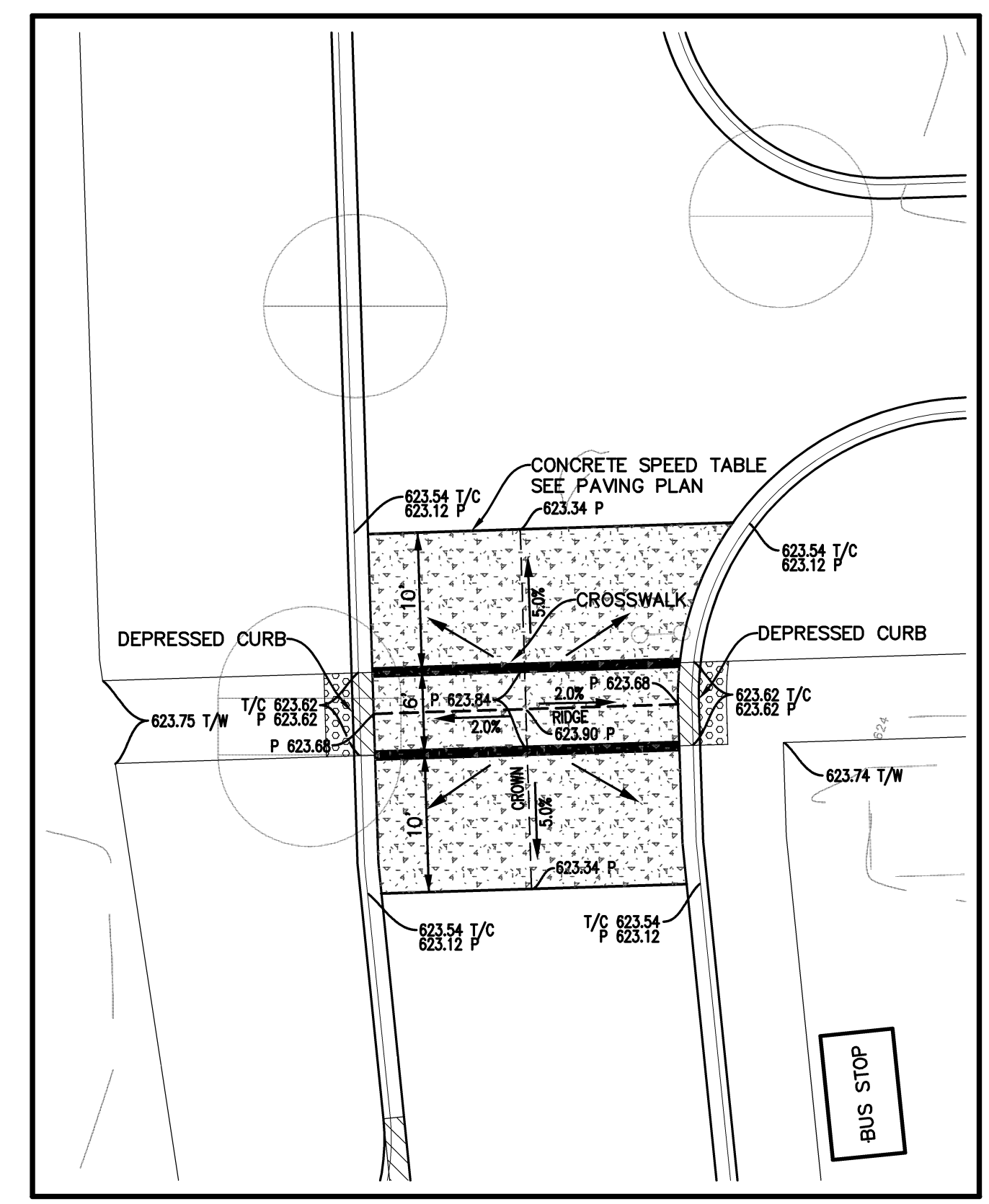
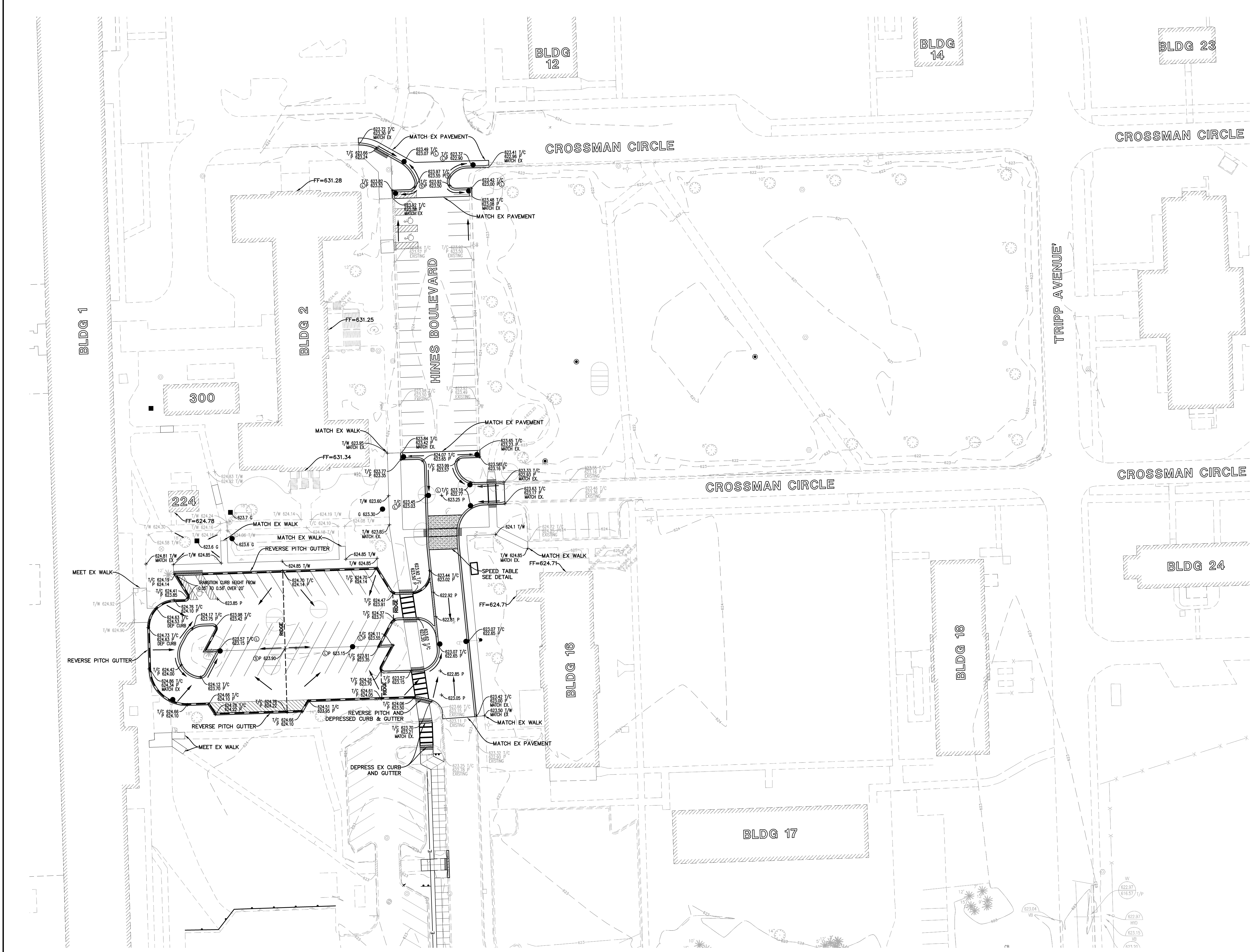
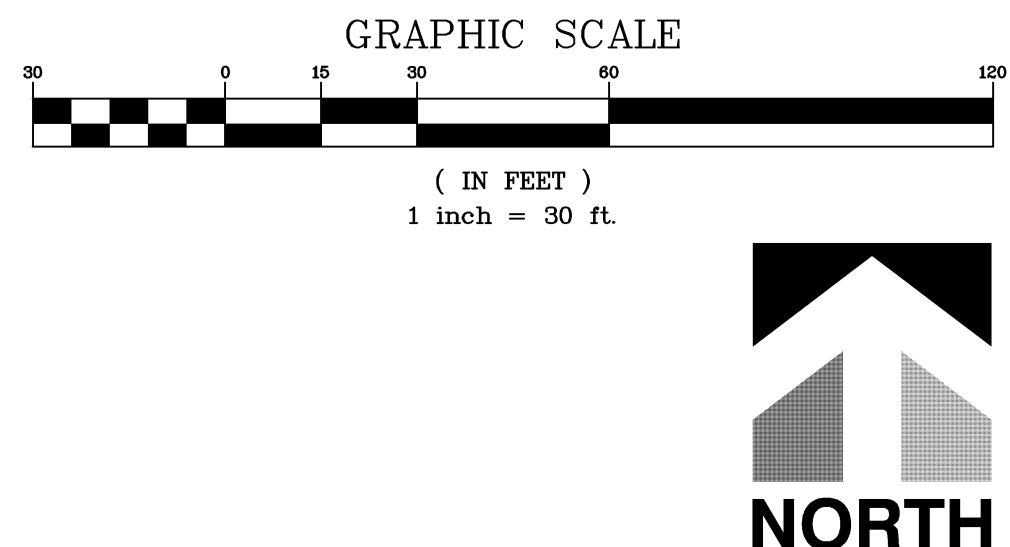


three inches = one foot  
one and one half inches = one foot  
one inch = one foot  
three quarters inch = one foot  
one half inch = one foot  
three eighths inch = one foot  
one quarter inch = one foot  
one eighth inch = one foot



- GRADING NOTES:**
- PAVEMENT SLOPES THROUGH HANDICAP ACCESSIBLE PARKING AREAS SHALL BE 2.00% MAXIMUM IN ANY DIRECTION.
  - ALL HANDICAP RAMPS SHALL BE CONSTRUCTED WITH A MAXIMUM CROSS SLOPE OF 2.00% OR LESS.
  - MEET EXISTING GRADE AT DISTURBED LIMITS UNLESS NOTED OTHERWISE.
  - THE CONTRACTOR SHALL REMOVE ALL TOPSOIL AND UNSUITABLE MATERIAL BELOW NEW AND EXISTING PARKING LOT AND ROADWAY AREAS. REFER TO THE SOILS REPORT FOR DEPTHS.
  - CONTRACTOR SHALL REFER TO THE SOIL EROSION AND SEDIMENT CONTROL PLAN AND DETAILS FOR CONSTRUCTION SCHEDULING AND EROSION CONTROL MEASURES TO BE INSTALLED PRIOR TO BEGINNING GRADING OPERATIONS.
  - CONTRACTOR SHALL REFER TO THE LANDSCAPE PLANS FOR RESTORATION OF ALL LANDSCAPE AREAS.

Revised Per VA Comments Construction Amendment 1	04/18/12 05/17/12	CONSULTANTS:			ARCHITECT / ENGINEER:		Drawing Title BUILDING 2 GRADING PLAN	Project Title Edward J. Hines Jr. VA Hospital Reconfigure Parking Lots-Phase 4	Project Number 578-12-090 Building Number BLDG 2	Office of Construction and Facilities Management 	
Revisions		Cowhey Manhard A MANHARD CONSULTING DIVISION		Jacobs/Ryan Associates Landscape Architects 1527 North Sandburg Terrace Chicago, Illinois 60610 (312) 664-3217	TRAFFIC ANALYSIS & DESIGN, INC.		Approved Project Director	Location HINES, ILLINOIS	Drawing Number C-203 Dwg. of		
Date								Date 03/29/12	Checked BJA	Drawn BDM	