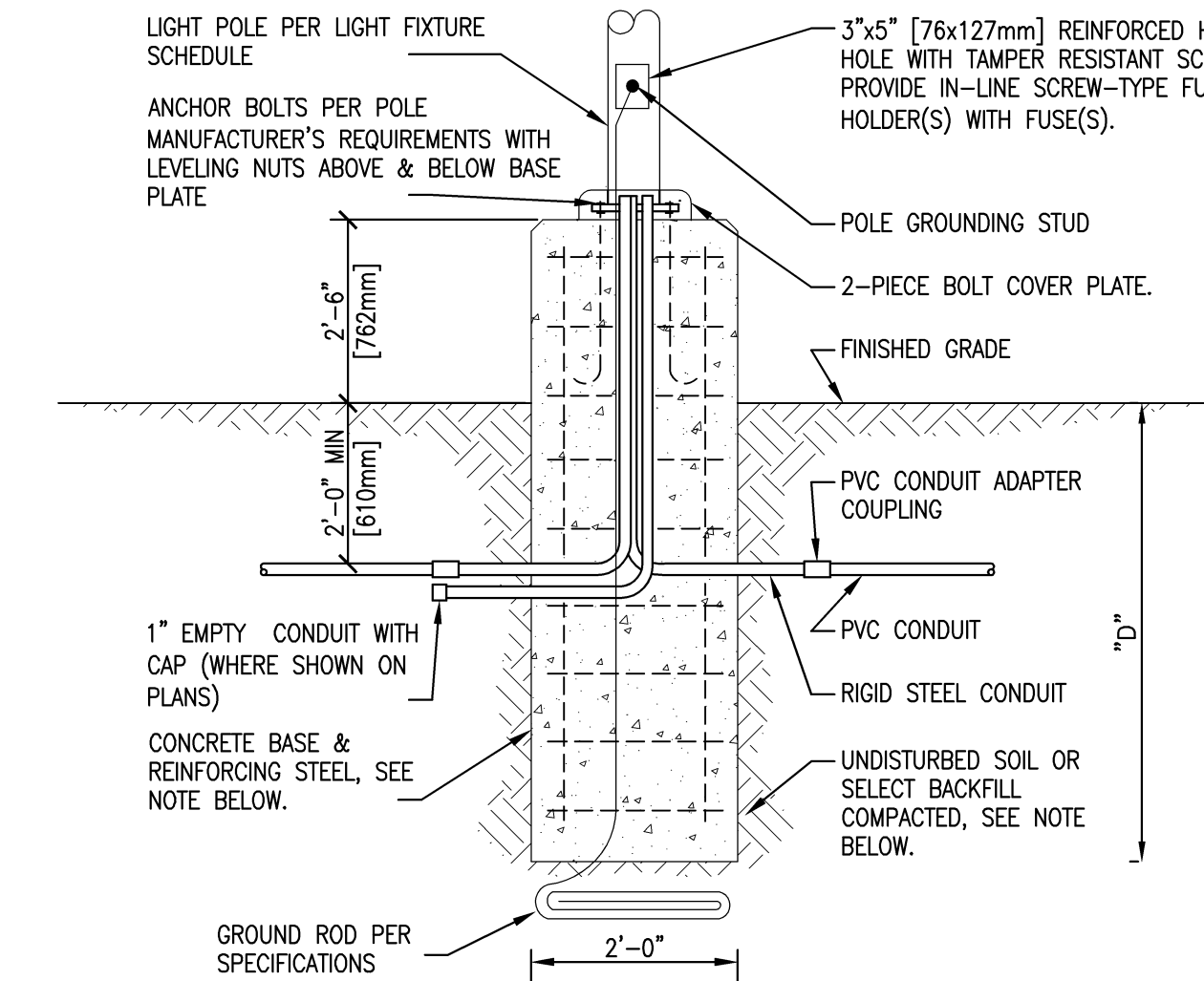


## UNDERGROUND CONCRETE PULLBOX

SCALE: NONE



**NOTE:**

BACKFILL, CONCRETE, REINFORCING STEEL, AND ANCHOR BOLTS ARE SHOWN FOR REFERENCE ONLY. FOUNDATION DEPTHS ARE FOR SITES WITH STIFF COHESIVE CLAY (1.5 TONS/SF). THIS SOIL STRENGTH SHALL BE VERIFIED BY BORING DATA PRIOR TO CONSTRUCTION OR WITH CALCULATIONS FROM A STRUCTURAL ENGINEER HIRED BY THE CONTRACTOR.

## POLE BASE DETAIL

NTS (PAVED AREAS ADJACENT TO PARKING)

NOTES:  
PRIOR TO ORDERING LIGHTS, CONTRACTOR SHALL COORDINATE WITH ARCHITECT  
AND LANDSCAPE ARCHITECT TO VERIFY ADDITIONAL SPECIFICATIONS FOR ALL  
LIGHT FIXTURES. DECISIONS MUST BE REVIEWED AND APPROVED BY THE COTR.

Diagram illustrating the cross-section and top view of a light pole base installation.

**Cross-Section Labels:**

- 3'-5" (76x127mm) REINFORCED HOLE WITH TAMPER RESISTANT SOIL HOLDER(S) WITH FUSE(S).
- POLE GROUNDING STUD
- 2-PIECE BOLT COVER PLATE.
- FINISHED PAVING
- 2'-5" (762mm)
- 2'-0" MIN. (510mm)
- 1" EMPTY CONDUIT WITH CAP (WHERE SHOWN ON PLANS)
- CONCRETE BASE & REINFORCING STEEL, SEE NOTE BELOW.
- GROUND ROD PER SPECIFICATIONS
- 2'-0"
- PVC CONDUIT ADAPTER COUPLING
- PVC CONDUIT
- RIGID STEEL CONDUIT
- UNDISTURBED SOIL OR SELECT BACKFILL COMPACTED, SEE NOTE BELOW.


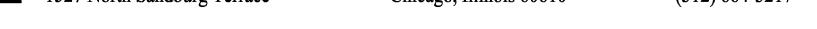

**Top View Labels:**

- 2'-0"

MOUNTING HEIGHT	"D" DEPTH OF FOUNDATION	
	SINGLE ARM	DOUBLE ARM
12'	6"	7"
20'	7"	8"
24'	8"	9"


NTS (PAVED AREAS)

WIRE SIZING TABLE
<p>NOTE -- THE ELECTRICAL CONTRACTOR SHALL BE REQUIRED TO INCLUDE, IN HIS SCOPE AND COST OF WORK, HIRING A QUALIFIED INDEPENDENT (THIRD PARTY) TESTING AGENCY TO PERFORM ELECTRICAL INSPECTION AND TESTING PER NETA ACCEPTANCE TESTING SPECIFICATIONS.</p> <p>INSPECTION AND TESTS SHALL BE PERFORMED ON NEW EQUIPMENT AND SUB-COMPONENTS INCLUDING:</p> <ol style="list-style-type: none"> <li>1. PANELBOARD</li> <li>2. TRANSFORMERS</li> <li>3. GROUNDING STEMS</li> </ol> <p>TESTING AGENCY SHALL BE CERTIFIED BY, AND A MEMBER COMPANY OF, THE INTERNATIONAL ELECTRICAL TESTING ASSOCIATION (NETA). CONTRACTOR SHALL BE RESPONSIBLE FOR CORRECTING DEFICIENCIES IDENTIFIED DURING TESTING AND SUBMITTING TEST RESULTS TO ENGINEER FOR APPROVAL. SEE SPECIFICATIONS FOR ADDITIONAL REQUIREMENTS.</p>

CONSULTANTS:		
 <p><b>Cowhey Manhard</b> A MANHARD CONSULTING DIVISION</p>	 <p><b>Jacobs/Ryan Associates</b> Landscape Architects</p> <p>1527 North Sandburg Terrace Chicago, Illinois 60610 (312) 664-3217</p>	 <p><b>SEPSTEIN</b></p>

Drawing Title
CONSTRUCTION DETAILS VA STANDARD DETAILS
Approved Project Director

Office of  
Construction  
and Facilities  
Management

 Department of  
Veterans Affairs

CONSTRUCTION DOCUMENTS 04/18/12