

3 SHEARWALL SCHEDULE

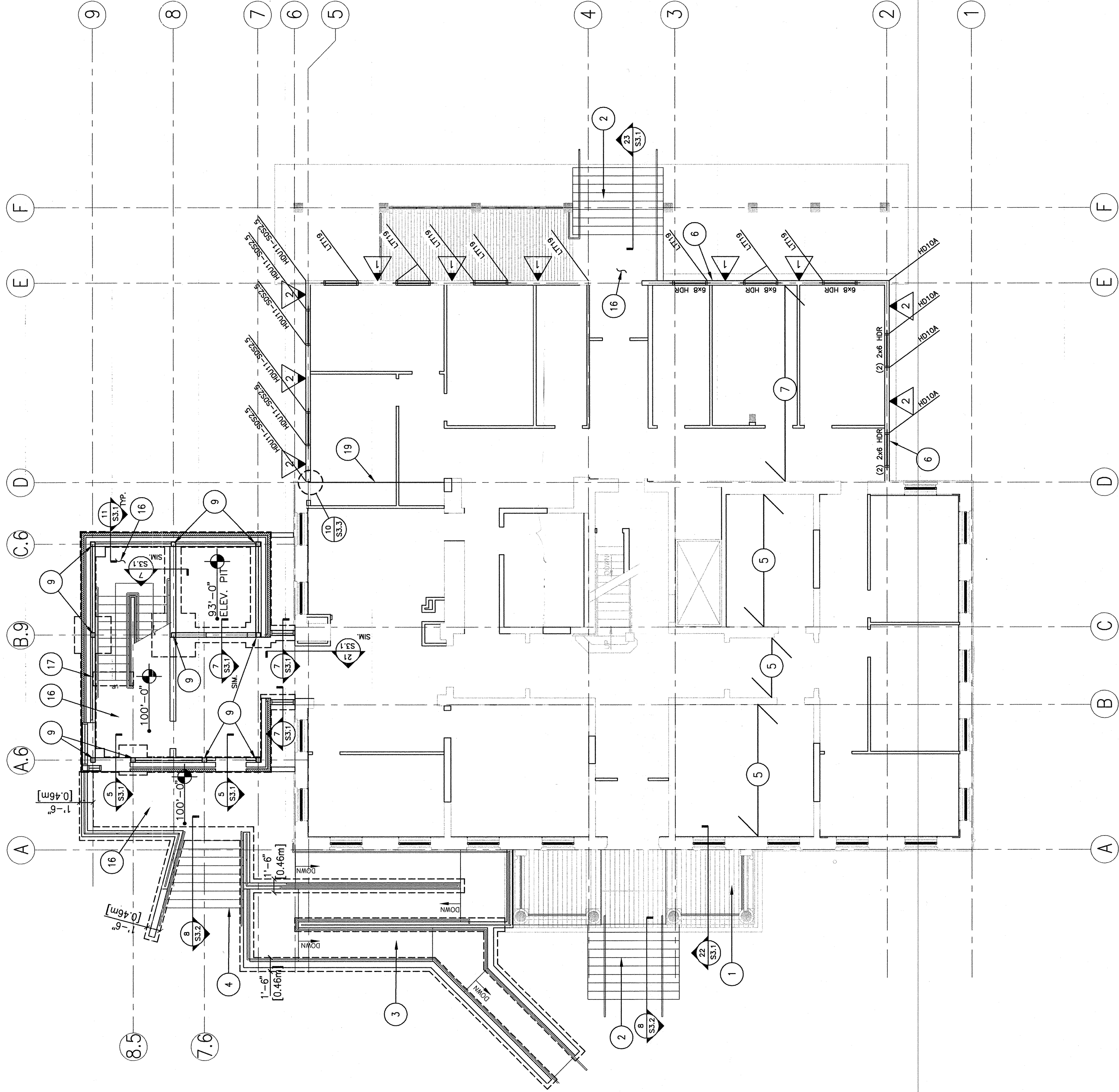
| △ | TYPE |
|---|-------------------------------------------------------------------|
| △ | 1/2" C-D SHEATHING W/ Bd AT 6" O.C. AT EDGES & 12" O.C. IN FIELD |
| △ | 5/8" C-D SHEATHING W/ 10d AT 3" O.C. AT EDGES & 12" O.C. IN FIELD |

GENERAL NOTES

- A. ALL BOTTOM OF NEW FOOTING ELEVATIONS TO BE 93'-0" U.N.O.
- B. 4" CONCRETE SLAB-ON-GRADE W/ #3 AT 18" O.C. EACH WAY CENTERED IN SLAB, RE: S3.1-1 FOR TYPICAL S.O.G. SECTION.
- C. CONTROL JOINTS/CONSTRUCTION JOINTS LOCATIONS IN SLAB-ON-GRADE, APPROX. LOCATIONS SHOWN ON PLAN, LOCATE PER THE FOLLOWING GUIDELINES:
1. MAX LENGTH BETWEEN ANY CONTROL JOINT TO BE 15'-0"
 2. MAX AREA OF CONCRETE SLAB ENCOMPASSED BY CONTROL JOINTS IS TO BE 225 SQUARE FEET
 3. MAX SPAN OF CONCRETE SLAB ENCOMPASSED BY CONTROL JOINTS IS TO BE 10'-0"
 4. LOCATE IN AT LEAST ONE DIRECTION FROM ALL RE-ENTRANT CORNERS.
- D. STEP FOOTING PER DETAIL S3.1-3.
- E. FINISHED FIRST FLOOR ASSUMED TO BE AT 100'-0".
- F. DRILL & EPOXY #5 REBAR TO MATCH HORIZ. FOOTING REINFORCING LOCATIONS FROM NEW FOOTINGS INTO (E) FOOTINGS, LAP PER S3.3-9.
- G. CONCRETE SHALL BE PLACED IN ACCORDANCE WITH S3.1-1.
- H. SEE ARCHITECTURAL DRAWINGS FOR ALL FINAL DIMENSIONS.

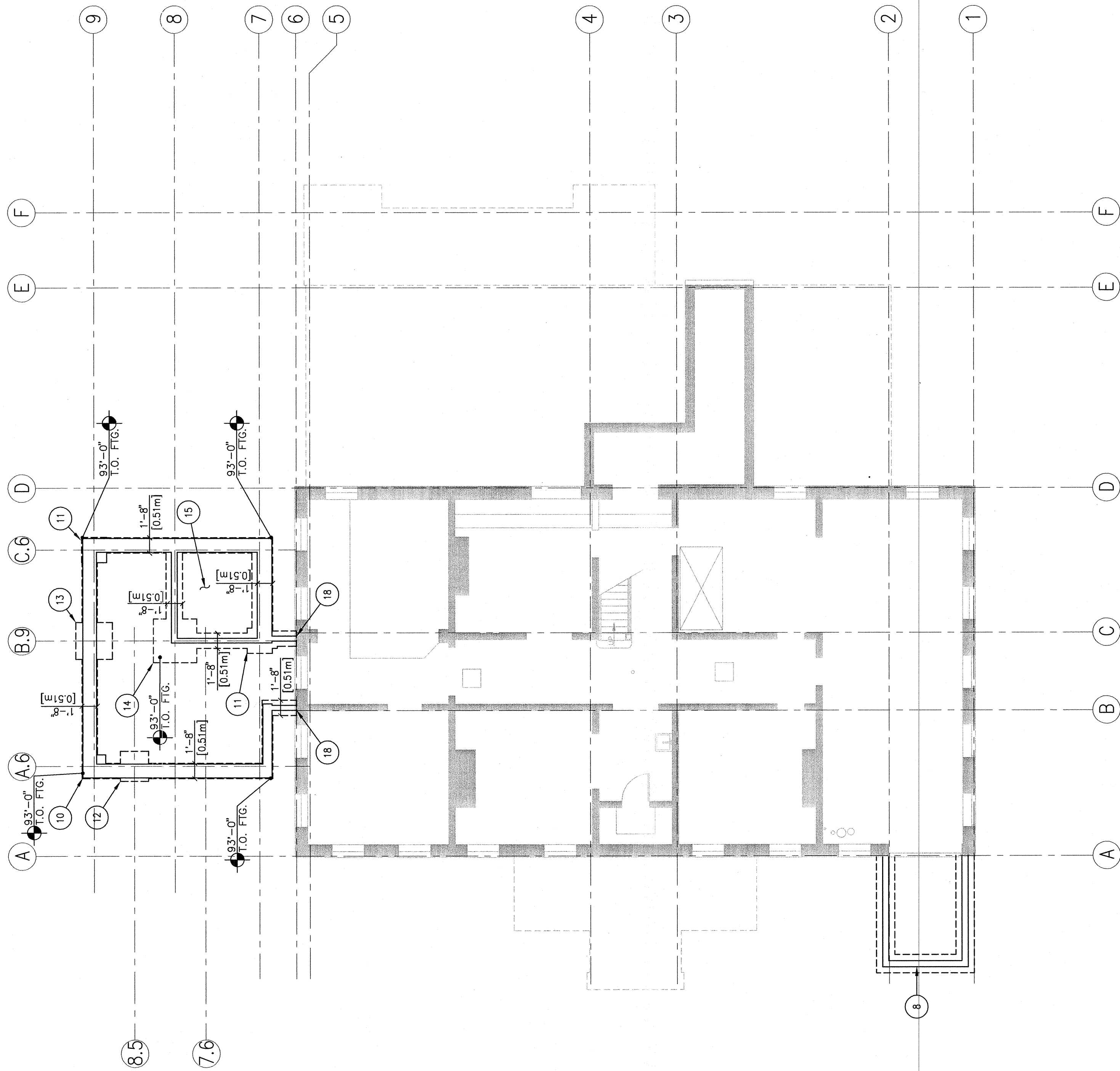
SHEET NOTES:

1. (E) PORCH FRAMING, REPAIR AS NEEDED.
2. REBUILD STAIRS IN CONCRETE PER DETAIL, CW/ ARCH.
3. (N) CONC RAMP AND WALLS, CW/ CIVIL
4. (N) CONCRETE STAIRS.
5. (E) FLOOR FRAMING.
6. (N) 2X6 STUDS @ 16" O.C. ON (E) FDN.
7. (E) FLOOR JOISTS.
8. (N) CONCRETE RETAINING WALL @ MECH. WELL
9. HSS6X11/4 COLUMN, RE: S3.2-6.
10. 2'-6"x2'-6"x1'-0" PAD FTG. W/ (3) #5 AT 12" O.C., EA. WAY
11. 2'-9"x2'-9"x1'-0" PAD FTG. W/ (4) #5 AT 12" O.C., EA. WAY
12. 3'-3"x3'-3"x1'-0" PAD FTG. W/ (4) #5 AT 12" O.C., EA. WAY
13. 4'-0"x4'-0"x1'-0" PAD FTG. W/ (5) #5 AT 12" O.C., EA. WAY
14. 4'-9"x4'-9"x1'-0" PAD FTG. W/ (6) #5 AT 12" O.C., EA. WAY
15. 12" SLAB W/ #5 AT 12" O.C. EA. WAY
16. 4" SLAB-ON-GRADE
17. THICKENED SLAB AT STAIR STRINGER LANDING, RE: S3.1-6
18. DRILL & EPOXY REINFORCING IN (N) FOOTINGS TO (E) FOOTINGS.
19. (N) 5 1/8"x15" GLB




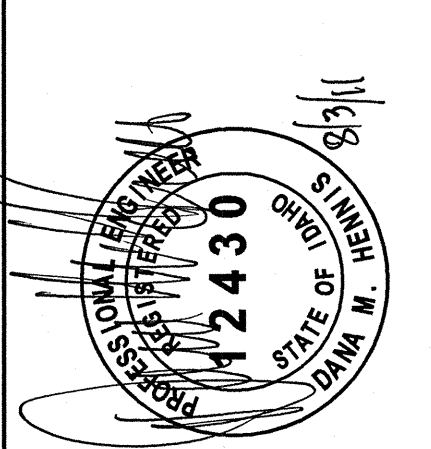
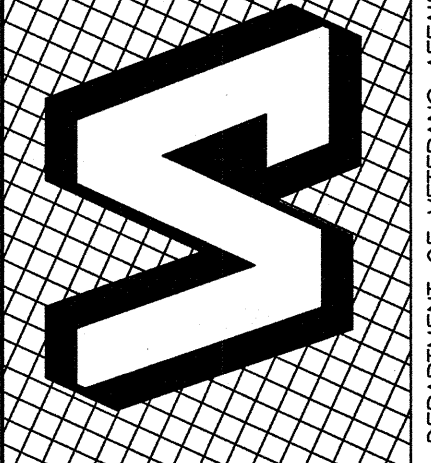
2 FIRST FLOOR FRAMING PLAN BLDG. 33

SCALE: 1/8" = 1'-0"



1 (E) FOUNDATION PLAN BLDG. 33

SCALE: 1/8" = 1'-0"

| | | | | | |
|----------------------------------------------------------------------------------------------------------------------------------------------------------------------------------------------------------|---------------------------------------------------------------------------------------|----------------------------------------------------------------------------------------------------------------------|---------------------------------------------------------------|--------------------------------------------------------------|---------------------------|
|  C.W. MOORE PLAZA 250 S. 5TH ST. BOISE, ID 83702 (208) 343-4635 FAX (208) 343-1658 http://www.cshqa.com |  |  DEPARTMENT OF VETERANS AFFAIRS | DRAWING TITLE FOUNDATION PLAN/ FIRST FLOOR FRAMING PLAN | PROJECT TITLE VAMC PHASE II: BUILDING 33 RENOVATION | DATE 08/05/11 |
| | | | APPROVED: CHIEF OF FACILITY MANAGEMENT SERVICE | BUILDING NUMBER 33 | PROJECT NO. 531-10-114 |
| | | | APPROVED: MEDICAL CENTER DIRECTOR | CHECKED BA | DRAWING NO. S2.1 |
| | | | | LOCATION VAMC BOISE, IDAHO | DWG 48 OF 101 |