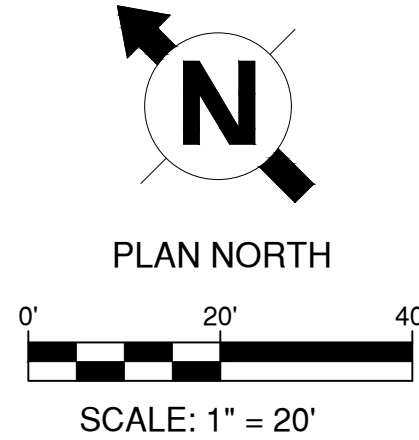




GENERAL SANITARY SEWER PLAN NOTES:

- 1. REFER TO SHEET CU501 FOR SANITARY SEWER DETAILS.
- 2. PLAN AND PROFILE VIEWS MAY NOT LINE UP EXACTLY BECAUSE OF BENDS IN THE LINE IN PLAN VIEW.

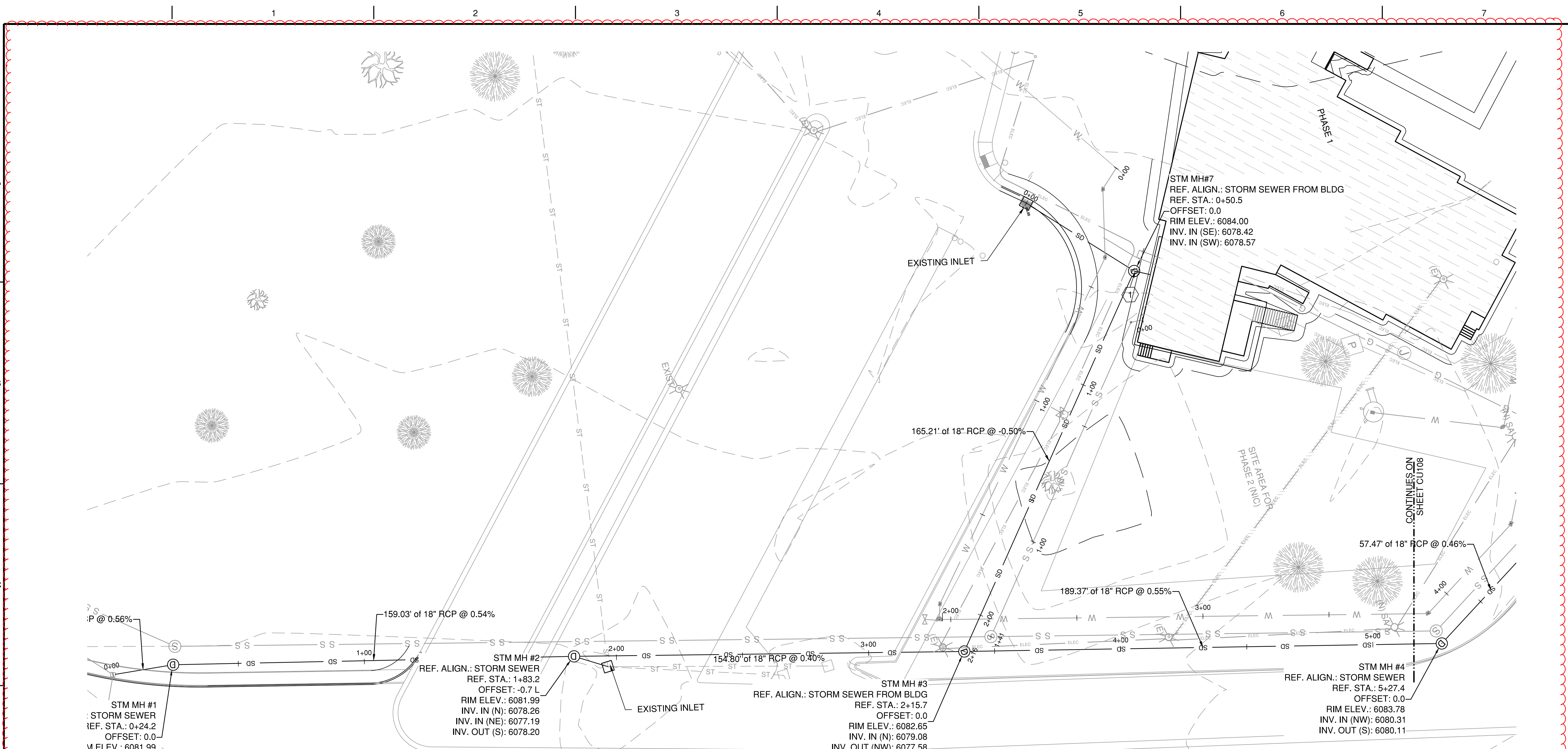
PLAN

PROFILE

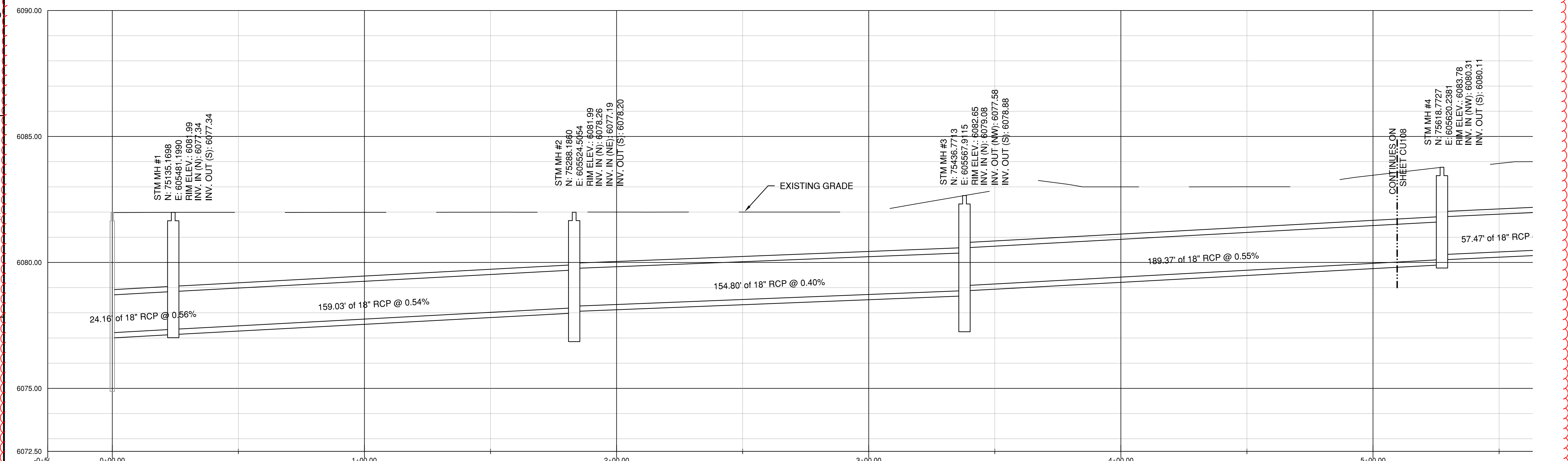


		CONSULTANT:	CONSULTANT:	ARCHITECT/ENGINEERS:	Drawing Title SANITARY SEWER PLAN AND PROFILE	Project Title COMMUNITY LIVING CENTER	Project Number 442-12-357	Office of Construction and Facilities Management				
										Building Number COWBOY		
RFI #5	21 APRIL 2017			<div><div>11011 SOUTH PINES PEAK DRIVE #202 PARKER, COLORADO 80521 PH: 303-843-3922 WWW.AES-GRP.COM</div></div>	Approved: Project Director SYLVIE RUPP - CFM DIRECTOR FACILITIES/ENGINEERING PHONE: 307-778-7550x7267 FAX: 307-287-9725	Location CHEYENNE, WYOMING	Drawing Number CU106	 Department of Veterans Affairs				
RFI #4	12 APRIL 2017								Date MARCH 2017	Checked CLB	Drawn RID	Dwg. of
RFI #3	31 MARCH 2017											
RFI #2	24 MARCH 2017											
REQUEST FOR INFORMATION #1 (RFI #1)	16 MARCH 2017											
Revisions:	Date											

three inches = one foot
one and one half inches = one foot
one inch = one foot
three quarters inch = one foot
one half inch = one foot
one quarter inch = one foot
one eighth inch = one foot



PLAN



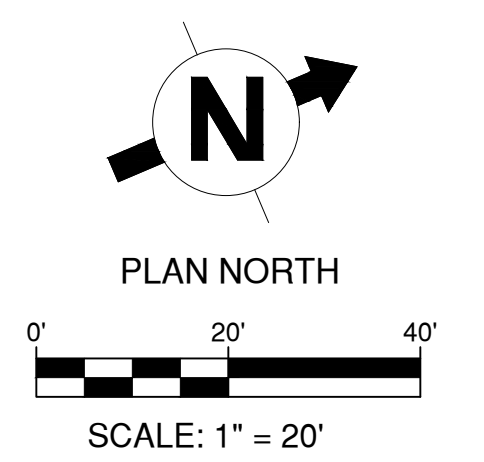
PROFILE

GENERAL STORM SEWER PLAN NOTES:

1. REFER TO SHEET CU502 FOR STORM SEWER DETAILS.
2. PLAN AND PROFILE VIEWS MAY NOT LINE UP EXACTLY BECAUSE OF BENDS IN THE LINE IN PLAN VIEW.

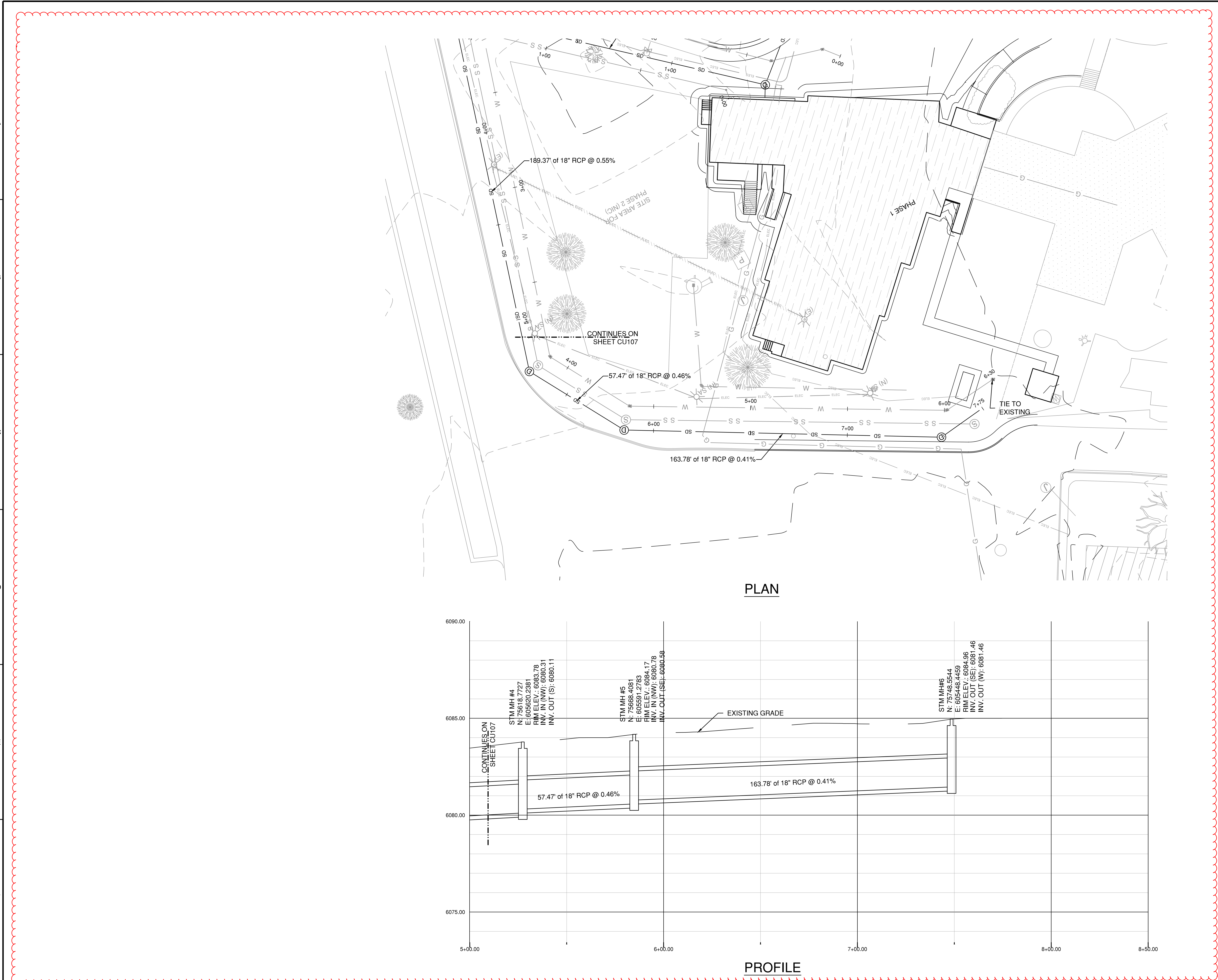
STORM SEWER PLAN KEYNOTES:

1. 3" PVC PIPE. TIE TO SUMP. SEE PLUMBING DRAWINGS.

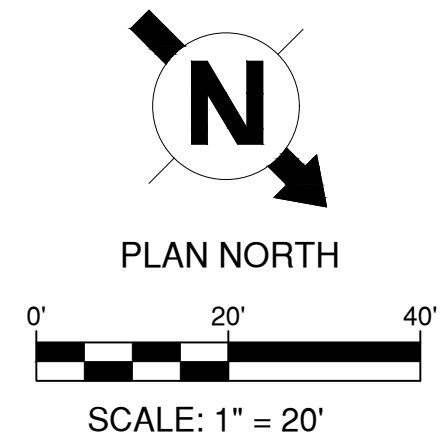




		CONSULTANT:	CONSULTANT:	ARCHITECT/ENGINEERS:	Drawing Title STORM SEWER PLAN AND PROFILE	Project Title COMMUNITY LIVING CENTER	Project Number 442-12-357	Office of Construction and Facilities Management
						Building Number COWBOY		
RFI #5	21 APRIL 2017					Drawing Number CU107		
RFI #4	12 APRIL 2017					Dwg. of		
RFI #3	31 MARCH 2017							
RFI #2	24 MARCH 2017				Approved: Project Director SYLVIE RUPP - CFM DIRECTOR FACILITIES/ENGINEERING PHONE: 307-778-7550x7267 FAX: 307-287-9725	Location CHEYENNE, WYOMING		Department of Veterans Affairs
REQUEST FOR INFORMATION #1 (RFI #1)	16 MARCH 2017				Date MARCH 2017	Checked CLB	Drawn RID	
Revisions:	Date							

three inches = one foot
one and one half inches = one foot
one inch = one foot
three quarters inch = one foot
one half inch = one foot
three eighths inch = one foot
one quarter inch = one foot
one eighth inch = one foot



- GENERAL STORM SEWER PLAN NOTES:**
1. REFER TO SHEETS CU502 FOR STORM SEWER DETAILS.
 2. PLAN AND PROFILE VIEWS MAY NOT LINE UP EXACTLY BECAUSE OF BENDS IN THE LINE IN PLAN VIEW.



<div>RFI #521 APRIL 2017</div> <div>RFI #412 APRIL 2017</div> <div>RFI #331 MARCH 2017</div> <div>RFI #224 MARCH 2017</div> <div>REQUEST FOR INFORMATION #1 (RFI #1)16 MARCH 2017</div> <div>Revisions:Date</div>		<div>CONSULTANT:</div>		<div>CONSULTANT:</div>		<div>ARCHITECT/ENGINEERS:</div> <div><div>11011 SOUTH PINES PEAK DRIVE #202 PARSONS, COLORADO 80469 PH: 303.843.3923 WWW.AES-GRP.COM</div></div>		<div>Drawing Title</div> <div>STORM SEWER PLAN AND PROFILE</div> <div>Approved: Project Director</div> <div>SYLVIE RUPP - CFM DIRECTOR FACILITIES/ENGINEERING PHONE: 307-778-7550x7267 FAX: 307-287-9725</div>		<div>Project Title</div> <div>COMMUNITY LIVING CENTER</div> <div>Location</div> <div>CHEYENNE, WYOMING</div> <div>Date</div> <div>MARCH 2017</div> <div>Checked</div> <div>CLB</div> <div>Drawn</div> <div>RID</div> <div>Project Number</div> <div>442-12-357</div> <div>Building Number</div> <div>COWBOY</div> <div>Drawing Number</div> <div>CU108</div> <div>Dwg. of</div>		<div>Office of Construction and Facilities Management</div> <div>Department of Veterans Affairs</div>	
---	--	------------------------	--	------------------------	--	---	--	--	--	---	--	--	--

three inches = one foot

one and one half inches = one foot

one inch = one foot

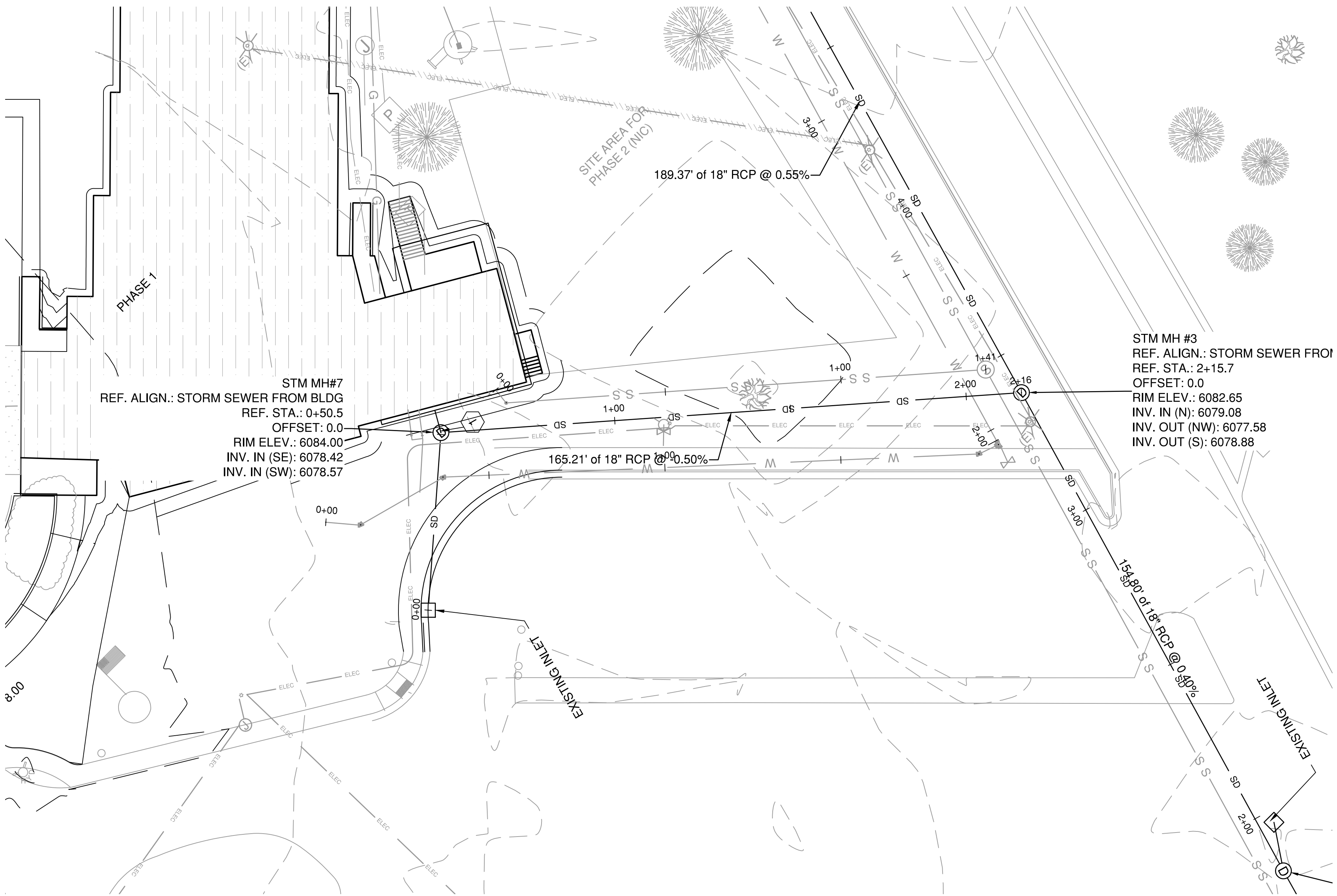
three quarters inch = one foot

one half inch = one foot

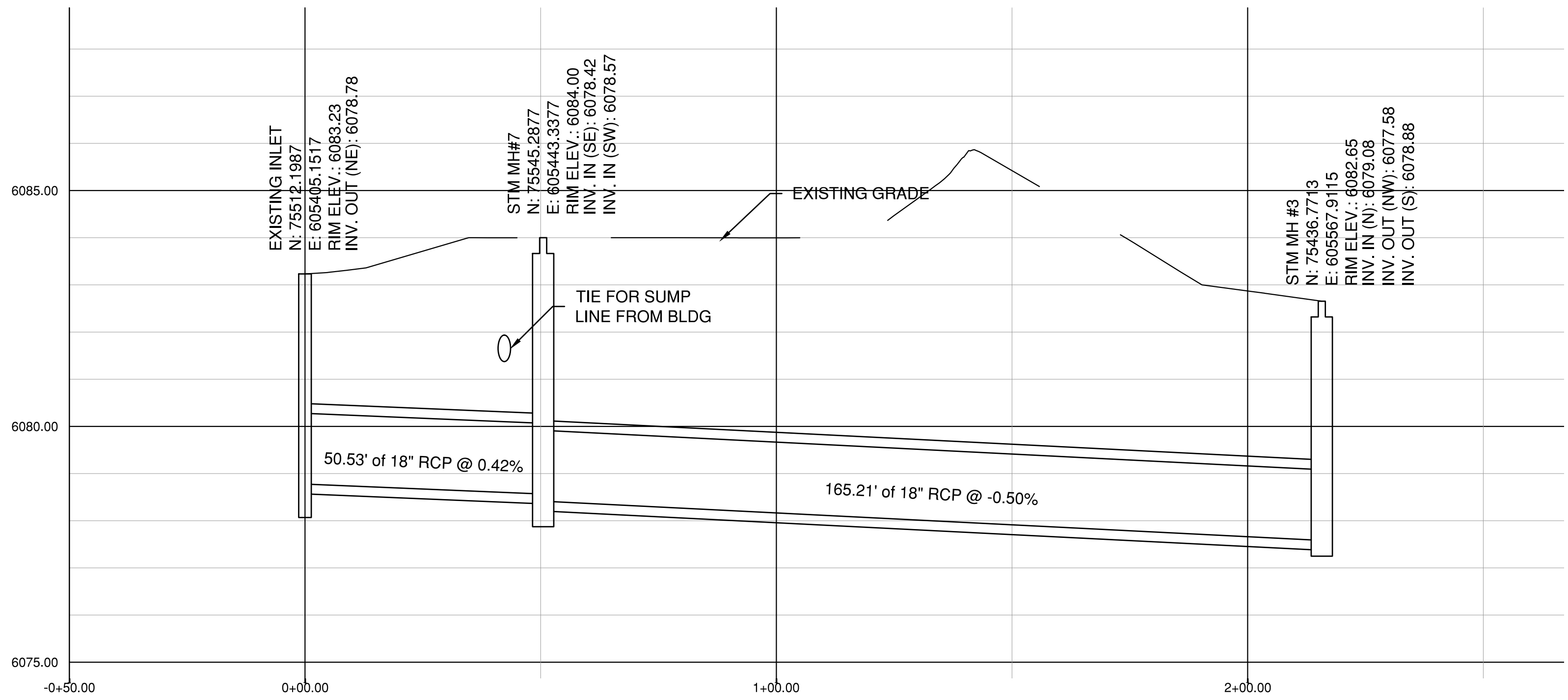
three eighths inch = one foot

one quarter inch = one foot

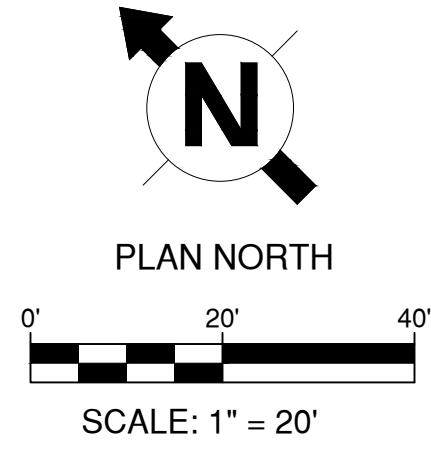
one eighth inch = one foot





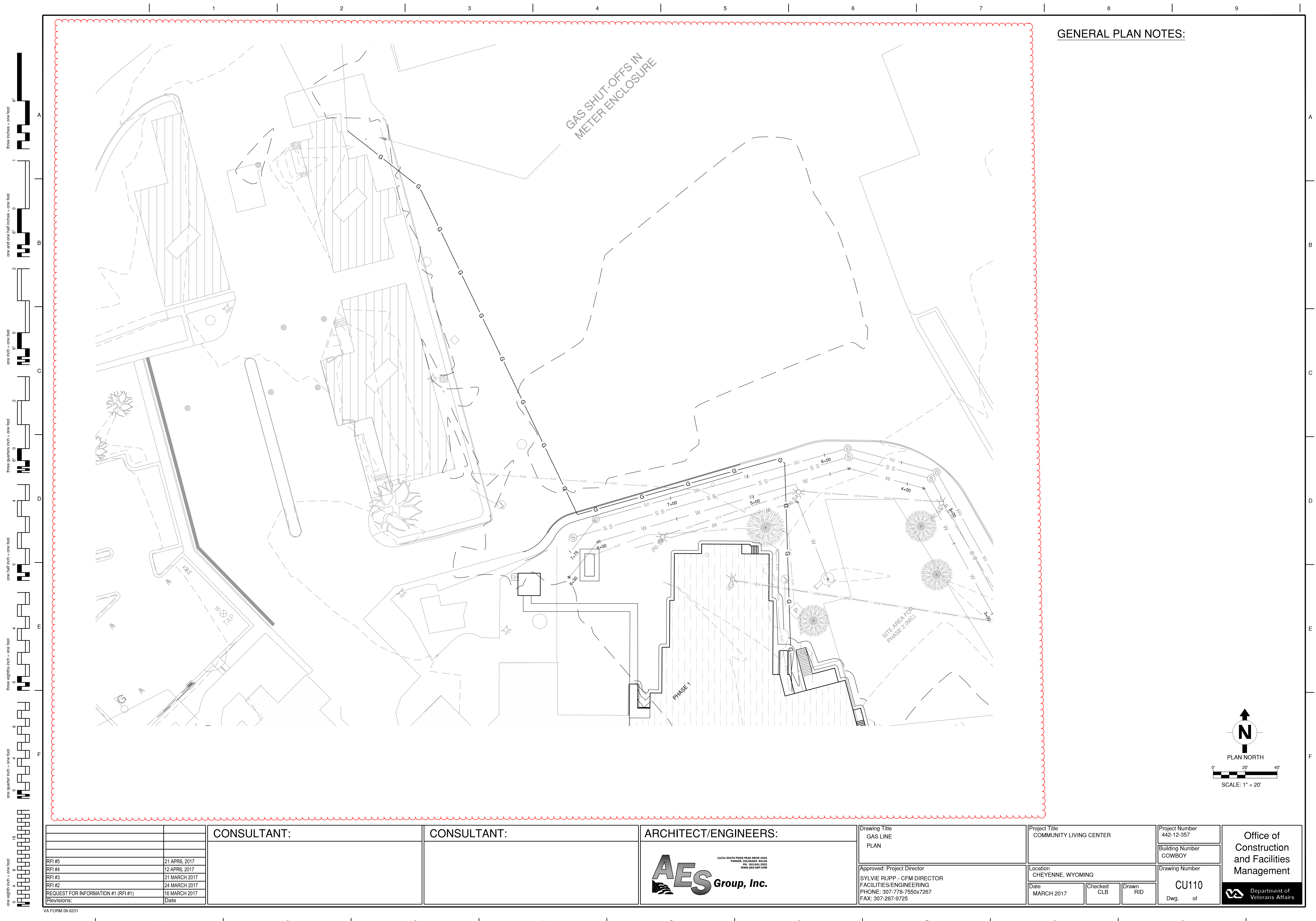
PLAN



PROFILE



		CONSULTANT:		CONSULTANT:		ARCHITECT/ENGINEERS:		Drawing Title STORM SEWER PLAN AND PROFILE		Project Title COMMUNITY LIVING CENTER		Project Number 442-12-357		<div>Office of Construction and Facilities Management</div>			
						<div><div>11033 SOUTH PINES PEAK DRIVE #202 PARKER, COLORADO 80138 PH: 303-643-3923 WWW.AES-GRP.COM</div></div>				Building Number COWBOY							
RFI #5		21 APRIL 2017								Drawing Number							
RFI #4		12 APRIL 2017								<div>CU109</div> <div>Dwg. of</div>							
RFI #3		31 MARCH 2017															
RFI #2		24 MARCH 2017															
REQUEST FOR INFORMATION #1 (RFI #1)		16 MARCH 2017															
Revisions:		Date						Approved: Project Director SYLVIE RUPP - CFM DIRECTOR FACILITIES/ENGINEERING PHONE: 307-778-7550x7267 FAX: 307-287-9725		Location CHEYENNE, WYOMING		Date MARCH 2017		Checked CLB		Drawn RID	
																<div> Department of Veterans Affairs</div>	

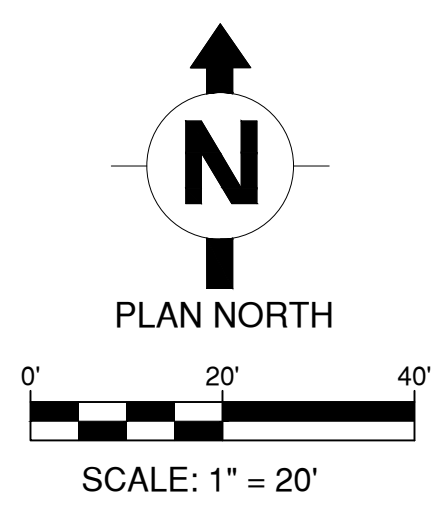


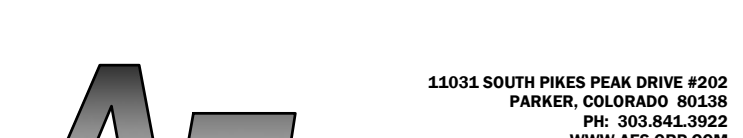

GENERAL PLAN NOTES:

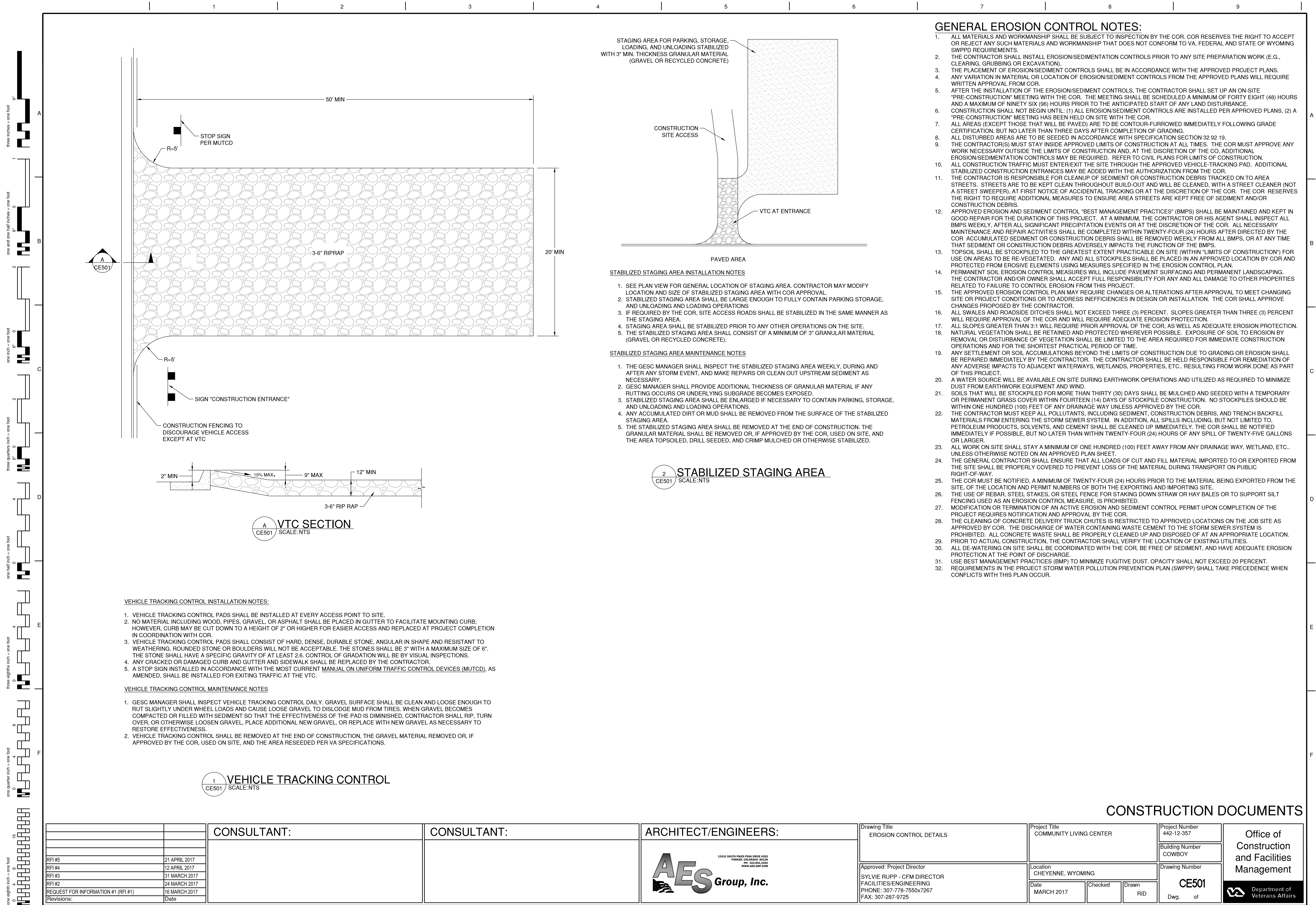
three inches = one foot
one and one half inches = one foot
one inch = one foot
three quarters inch = one foot
one half inch = one foot
three eighths inch = one foot
one quarter inch = one foot
one eighth inch = one foot

GAS SHUT-OFFS IN
METER ENCLOSURE

SITE AREA FOR
PHASE 2 (N/C)

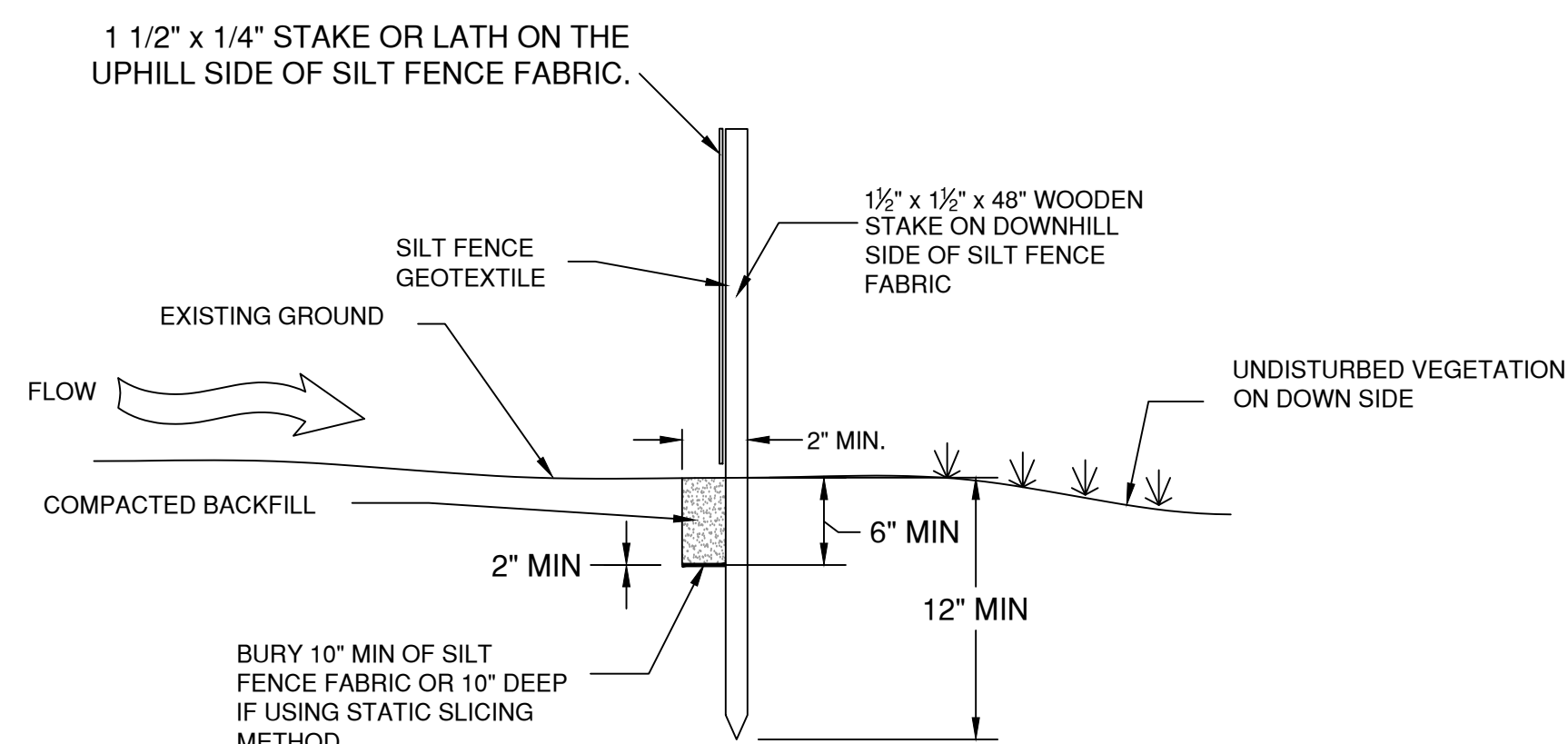


		CONSULTANT:	CONSULTANT:	ARCHITECT/ENGINEERS: <div><div><div>10011 SOUTH PINES PEAK DRIVE #202 PARADE, COLORADO 80118 PH: 303.843.3923 WWW.AES-GRP.COM</div></div><div><div>Approved: Project Director</div><div>SYLVIE RUPP - CFM DIRECTOR</div><div>FACILITIES/ENGINEERING</div><div>PHONE: 307-778-7550x7267</div><div>FAX: 307-287-9725</div></div></div>	Drawing Title GAS LINE PLAN		Project Title COMMUNITY LIVING CENTER		Project Number 442-12-357		Office of Construction and Facilities Management
					Location CHEYENNE, WYOMING		Building Number COWBOY				
RFI #5	21 APRIL 2017				Date MARCH 2017		Checked CLB	Drawn RID	Drawing Number CU110 Dwg. of		
RFI #4	12 APRIL 2017										
RFI #3	31 MARCH 2017										
RFI #2	24 MARCH 2017										
REQUEST FOR INFORMATION #1 (RFI #1)		16 MARCH 2017						 Department of Veterans Affairs			
Revisions:		Date									

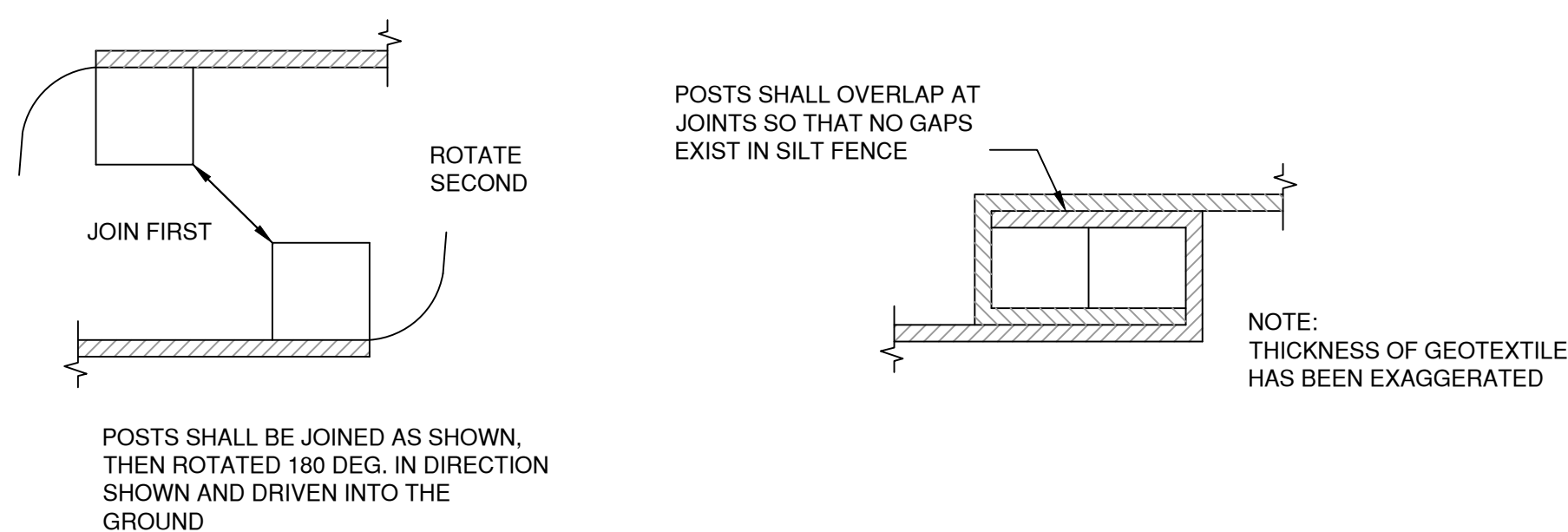




1. SOCKS WILL BE USED UPGRADIENT OF INLET PERPENDICULAR TO AND FLUSH WITH CURB.
2. NO FEWER THAN 2-10" DIAMETER SOCKS MUST BE USED IN SEQUENCE, SPACED NO MORE THAN 5 FEET APART, UPGRADIENT OF INLET. NO FEWER THAN 6 SOCKS SHALL BE USED IF THE 4" SIZE IS CHOSEN.
3. INCLINE AT 30° FROM PERPENDICULAR, OPPOSITE THE DIRECTION OF FLOW.
4. EROSION CONTROL MEASURES SHALL BE MAINTAINED AT ALL TIMES AS DIRECTED BY THE COR.



SILT FENCE SECTION



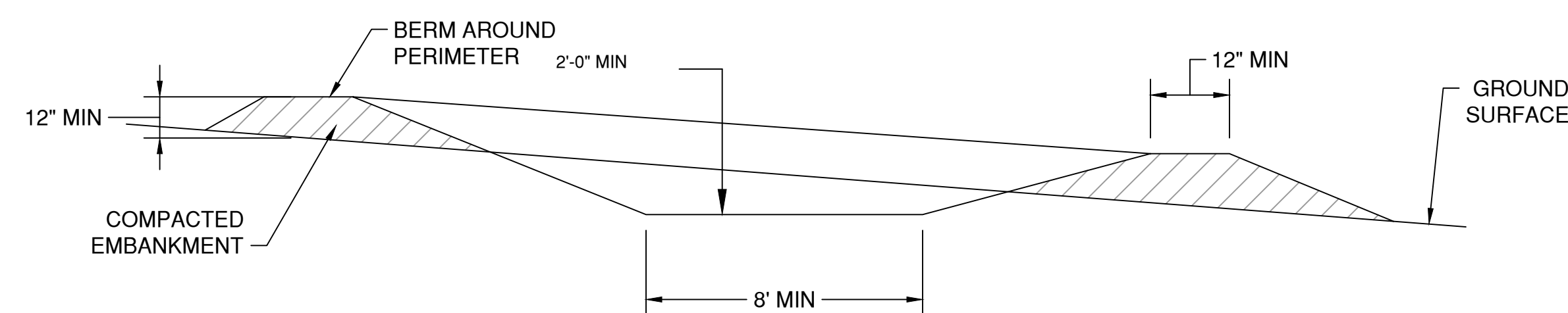
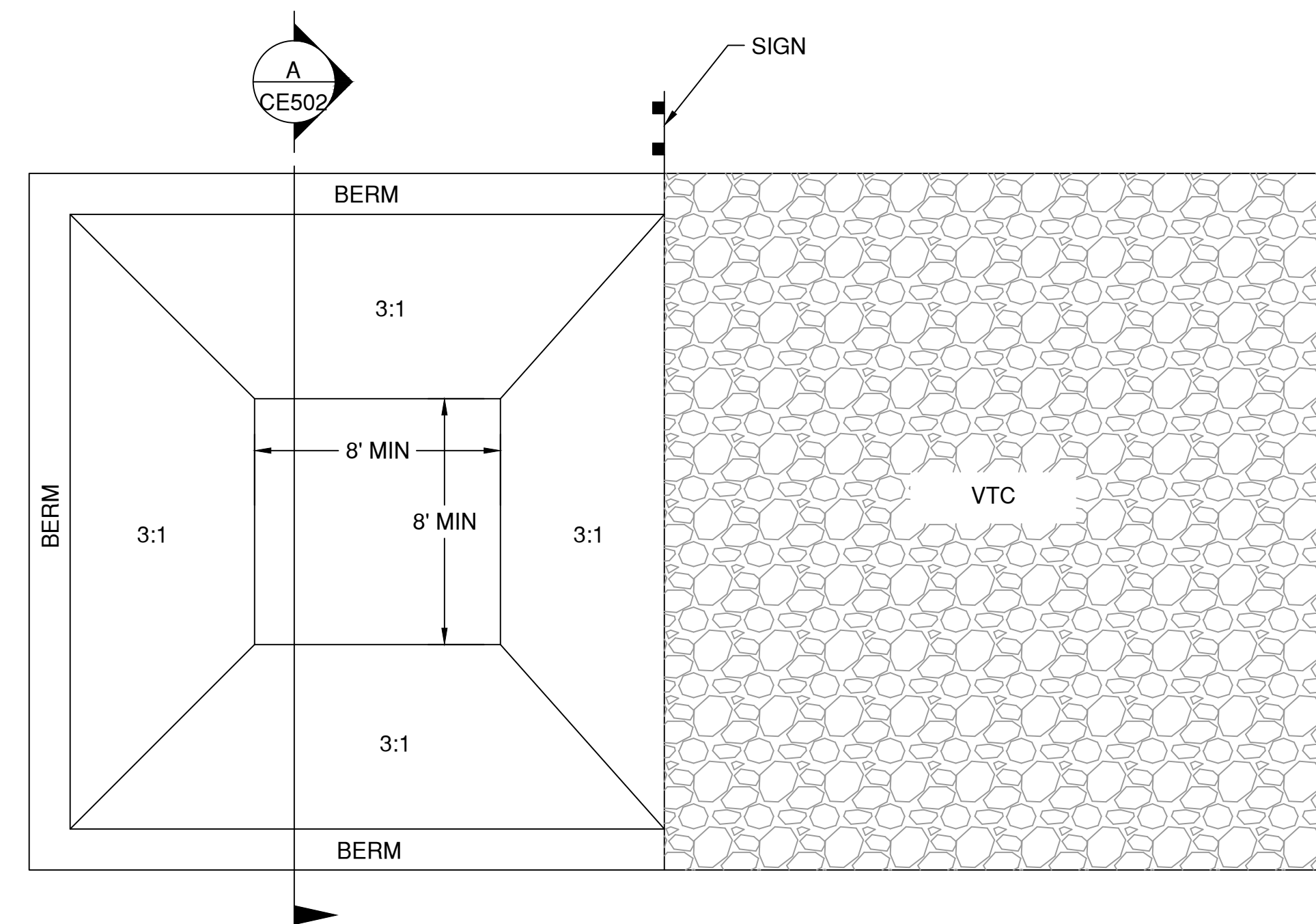
JOINT SECTIONS

SILT FENCE INSTALLATION NOTES

1. SEE EROSION CONTROL PLAN, SHEET CE101, FOR LOCATION(S) OF SILT FENCE
2. ALL SILT FENCE SHALL BE IN GOOD CONDITION AND FREE OF ANY DEFECTS INCLUDING RIPS, HOLES AND OBVIOUS WEAR.
3. A 6" X 2" ANCHOR TRENCH SHALL BE EXCAVATED WITH TRENCHER, OR WITH SILT FENCE INSTALLATION MACHINE, ROAD GRADERS, BACKHOES, AND OTHER SIMILAR MACHINERY SHALL NOT BE USED.
4. A 10" DEEP ANCHOR SLIT SHALL BE FORMED IF USING A STATIC SLICING METHOD.
5. EXCAVATED MATERIAL SHALL BE PLACED ON UPHILL SIDE OF ANCHOR TRENCH.
6. THE ANCHOR TRENCH SHALL BE FREE OF ROCKS OR OTHER DEBRIS PRIOR TO THE PLACEMENT OF THE SILT FENCE.
7. THE ANCHOR TRENCH SHALL BE BACKFILLED WITH SOIL THAT IS FREE OF ROCKS AND DEBRIS. BOTH SIDE OF THE TRENCH SHALL BE COMPACTED BY HAND, USING A VIBRATORY PLATE COMPACTOR, JUMPING JACK TAMPER OR BY WHEEL ROLLING WITH A SKID STEER OR TRACTOR.
8. SILT FENCE STAKES SHALL BE MADE OF WOOD AND HAVE THE FOLLOWING DIMENSIONS: 1 1/2" x 1 1/2" x 48"
9. STAKES SHALL BE PLACED ON THE DOWNHILL SIDE OF THE SILT FENCE FABRIC AND PLACED ON 10.0' CENTERS OR LESS. STAKES SHALL BE EMBEDDED A MINIMUM OF 12" INTO THE GROUND. A WOODEN LATH SHALL BE ATTACHED TO THE OPPOSING (UPHILL) SIDE OF THE STAKE FOR ADDED STRENGTH AND SUPPORT. THE LATH SHALL HAVE THE FOLLOWING DIMENSIONS 1 1/2" x 1 1/4" x 24".
10. SILT FENCE SHALL BE PULLED TIGHT AS IT IS ANCHORED TO THE STAKES. THERE SHOULD NOT BE NOTICEABLE SAG ALONG ANY PORTION OF THE SILT FENCE AFTER IT HAS BEEN ANCHORED TO THE STAKES.
11. SILT FENCE FABRIC SHALL BE ANCHORED TO THE STAKES AND LATHS USING 1" HEAVY DUTY STAPLES OR NAILS WITH 1" HEADS. STAPLES AND NAILS SHOULD BE PLACED EVERY THREE INCHES ALONG THE SILT FENCE FABRIC.
12. SILT FENCE FABRIC SHALL MEET THE FOLLOWING MANDATORY REQUIREMENTS:
 - GRAB TENSILE STRENGTH ASTM D 4632 >= 124 LBS
 - MULLEN BURST STRENGTH ASTM D 3786 >= 300PSI
 - PUNCTURE STRENGTH ASTM D 4833 >= 60 LBS
 - TRAPEZOID TEAR STRENGTH ASTM D 4333 >= 65 LBS
 - UV RESISTANCE ASTM D 4355 >= 80% @ 500 HR
 - FLOW RATE ASTM D 4491 >= 10 GAL/MIN/FT2
13. AN ORIGINAL PRODUCT SPECIFICATION SHEET FROM THE SILT FENCE MANUFACTURER SHALL BE MADE AVAILABLE AT THE REQUEST OF THE COR. THE PRODUCT SPECIFICATION SHEET SHALL PROVIDE THE RESULTS FOR THE TEST METHODS ABOVE.
14. SILT FENCE JOINTS SHALL BE CONNECTED ACCORDING THE TO ATTACHED DRAWING.

SILT FENCE INSPECTION AND MAINTENANCE NOTES

1. THE EROSION CONTROL SUPERVISOR SHALL INSPECT SILT FENCE AT THE FOLLOWING INTERVALS:
 - IMMEDIATELY FOLLOWING INITIAL INSTALLATION
 - EVERY 14 DAYS WHILE THE SITE IS UNDER ACTIVE CONSTRUCTION
 - AFTER ANY STORM EVENT THAT CAUSES SOIL EROSION
 - ONCE A MONTH FOLLOWING THE END OF CONSTRUCTION, UNTIL VEGETATIVE COVER HAS REACHED A CONSISTENT DENSITY OF AT LEAST 70% OF FULL VEGETATIVE COVER.
 - IMMEDIATELY FOLLOWING STRONG WINDS.
2. ACCUMULATED SEDIMENT SHALL BE REMOVED ONCE THE UPSTREAM SEDIMENT HAS REACHED A DEPTH OF 6-INCHES.
3. SILT FENCE SHALL REMAIN IN PLACE AND PROPERLY MAINTAINED UNTIL VEGETATIVE COVER HAS REACHED A CONSISTENT DENSITY OF AT LEAST 70% OF FULL VEGETATIVE COVER AND EROSION AND SEDIMENTATION IS NO LONGER A POSSIBILITY AS DETERMINED BY THE COR.
4. SILT FENCE SHALL BE REPLACED WHEN THERE IS ANY SIGNS OF WEAR.
5. WHEN THE SILT FENCE IS REMOVED ANY DISTURBED AREAS ASSOCIATED WITH THE INSTALLATION, MAINTENANCE, AND/OR REMOVAL OF THE SILT FENCE SHALL BE RESEED PER VA SPECIFICATIONS.



CWA SECTION
SCALE: NTS


CONCRETE WASHOUT AREA INSTALLATION NOTES:

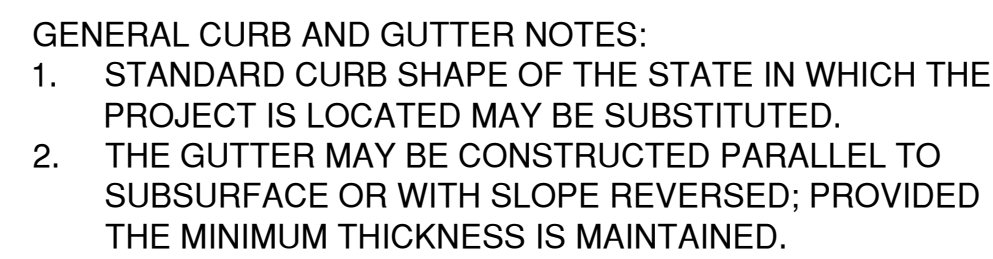
1. LOCATIONS OF CONCRETE WASHOUT AREA(S) SHALL BE DIRECTED ON SITE BY COR.
2. THE CONCRETE WASHOUT AREA SHALL BE INSTALLED PRIOR TO ANY CONCRETE PLACEMENT ON SITE.
3. VEHICLE TRACKING CONTROL IS REQUIRED AT THE ACCESS POINT.
4. SIGNS SHALL BE PLACED AT THE CONSTRUCTION ENTRANCE, AT THE WASHOUT AREA, AND ELSEWHERE AS NECESSARY TO CLEARLY INDICATE THE LOCATION OF THE CONCRETE WASHOUT AREA TO OPERATORS OF CONCRETE TRUCKS AND PUMP RIGS.
5. EXCAVATED MATERIAL SHALL BE UTILIZED IN PERIMETER BERM CONSTRUCTION.

CONCRETE WASHOUT AREA MAINTENANCE NOTES:

1. THE CONCRETE WASHOUT AREA SHALL BE REPAIRED AND ENLARGED OR CLEANED OUT AS NECESSARY TO MAINTAIN CAPACITY FOR WASTED CONCRETE.
2. AT THE END OF CONSTRUCTION, ALL CONCRETE SHALL BE REMOVED FROM THE SITE AND DISPOSED OF AT AN APPROVED WASTE SITE.
3. WHEN THE CONCRETE WASHOUT AREA IS REMOVED, THE DISTURBED AREA SHALL RE-SEEDED PER VA SPECIFICATIONS.
4. INSPECT WEEKLY, DURING AND AFTER ANY STORM EVENT.



		CONSULTANT:	CONSULTANT:	ARCHITECT/ENGINEERS:	Drawing Title EROSION CONTROL DETAILS	Project Title COMMUNITY LIVING CENTER	Project Number 442-12-357	Office of Construction and Facilities Management	
							Building Number COWBOY		Department of Veterans Affairs
RFI #5	21 APRIL 2017			 11033 SOUTH PIKES PEAK DRIVE #202 PARKER, COLORADO 80138 PH: 303-843-2923 WWW.AES-GRP.COM					
RFI #4	12 APRIL 2017								
RFI #3	31 MARCH 2017								
RFI #2	24 MARCH 2017								
REQUEST FOR INFORMATION #1 (RFI #1)	16 MARCH 2017								
Revisions:	Date				Approved: Project Director SYLVIE RUPP - CFM DIRECTOR FACILITIES/ENGINEERING PHONE: 307-778-7550x7267 FAX: 307-287-9725	Location CHEYENNE, WYOMING	Drawing Number CE502 Dwg. of		
						Date MARCH 2017	Checked	Drawn RID	



4"

3'-6"

4"

5' O.C. [1.5m]

3"Øx5'-0"
[760x1524mm]
STANDARD PIPE
POST BARRICADE
CONCRETE FILLED.

1'-6"

UTILITY CONCRETE
PER VA
SPECIFICATIONS

3"

9"

- NOTES:**
1. POST BARRICADES SHALL BE PAINTED WITH ONE PRIME COAT OF RED OXIDE (PAINT NO.1). ONE FINISH COAT OF DULL BLACK ENAMEL PER VA SPECIFICATIONS AND STRIPES CONSISTING OF 4" [102mm] BANDS OF YELLOW REFLECTORIZED TAPE SHALL BE USED UNLESS OTHERWISE SPECIFIED ON THE PLANS.
 2. FINISH COLOR COMBINATIONS, OTHER THAN THAT SPECIFIED ABOVE, SHALL BE SUBMITTED TO THE AGENCY FOR APPROVAL.

Technical drawing showing the details of a ramp curb and gutter, including the ADA Warning Panel, Ramp, and Curb and Gutter. The drawing includes dimensions and labels for various components.

Labels and Dimensions:

- TOP OF RAMP = 3" [75 mm]
- ADA WARNING PANEL
- TRANSITION TO MATCH CURB AND GUTTER
- TOP OF RAMP = 3 1/2" [90 mm]
- RADIUS PER PLANS
- TOP OF RAMP = 7 5/8" [195 mm]
- SIDEWALK
- RE: PLAN
- ROADWAY
- CURB AND GUTTER
- TC = 7" [180 mm]
- TC = 1/2" [13 mm]
- LIMITS OF RAMP
- 6' 0" [18.4 m]
- 2' 6" [780 mm]
- 2' 6" [780 mm]
- 6' 0" [18.4 m]
- 8' 0" [24.4 m]
- TC = 7" [180 mm]
- TC = 1/2" [13 mm]
- CROSS SLOPE 1% TYP - 2% MAX
- PLAN
- ROADWAY WIDTH
- VARIES
- 6'-6" (2m) SIDEWALK RAMP WIDTH
- SIDEWALK WIDTH PER PLANS
- 4 MIN. [1.2m]
- TYPE 2 CURB, H=6" [152mm] PER STANDARD VA DETAIL 32 05 23-17 "CONCRETE VERTICAL CURB AND TERMINATE SECTION" OR BARRICADE RAILING PER STD. DETAIL 32 05 23-04 "CONCRETE POST BARRICADE" REQUIRED ONLY WHEN NOTED ON THE PLANS IN ORDER TO RESTRICT VEHICULAR TRAFFIC.
- SECTION A-A

- GENERAL ACCESS RAMP NOTES:**
1. TOP OF CURB (TO) AND TOP OF RAMP ELEVATIONS SHOWN ARE IN RELATION TO THE GUTTER AND ARE LOCATED RADIIALLY. GUTTER = 0" TO STANDARD ADA DETAIL 32.05 23-18 "CONCRETE SIDEWALK" FOR JOINT REQUIREMENTS.
 2. WHEN CURB HEIGHTS OF GREATER THAN 7" [180mm] ARE SHOWN ON PLANS, SEE PLANS AND ADA REQUIREMENTS.
 3. LANDING RAMP ARE TO BE STANDARD ON ALL PROJECTS. TYPE 2 CURB WITH 6" [152mm] RETAIN OR BARRIER RAILING REQUIRED ONLY WHEN NOTED ON PLANS TO RESTRICT VEHICULAR TRAFFIC.

Diagram illustrating the dimensions and components of a rectangular ductile iron detectable warning plate:

- Width of Ramp:** 6" (on both sides of the plate).
- Width of Ramp Per Street Intersection:** TYPE (4.0' MIN.)
- Plate Dimensions:**
 - Length: 4.0' MIN.
 - Width: 3.0' MIN.
- Flowline:** Indicated by a line and arrow pointing to the bottom edge of the plate.
- Material:** DUCTILE IRON DETECTABLE WARNING PLATE BY NEENAH FOUNDRY OR APPROVED EQUAL.
- Offset:** 6" MIN. TO BACK OF CURB (indicated by a dimension line from the curb to the back of the plate).

- DETECTABLE WARNING NOTES:**
 THE DETECTABLE WARNING STRIP MUST COVER THE ENTIRE WIDTH OF THE RAMP OPENING, EXCLUDING THE WINGS. ALL DOMES MUST BE ALIGNED IN THE DIRECTION OF TRAVEL. ONE CORNER OF THE LEADING EDGE OF THE DETECTABLE WARNING MAY BE MORE THAN 5 FEET FROM THE BACK OF THE CURB. WHEN LOCATED ALONG A CURB RETURN, THE LEADING EDGE OF THE DETECTABLE WARNING MAY BE DEFINED BY THE CHORD DRAWN BETWEEN THE LEADING EDGES OF THE RAMP OPENING.

1" [25mm] SCORED OR SAWCUT CONTRACTION JOINT.

3/16"

1/4" [6mm] R. (TYP.) FORMED JOINTS ONLY

1/4" [6mm] DEEP SCORED JOINTS

4" (TYP)

CLASS "B" CONCRETE

EXPANSION JOINT WITH 1/4" [6mm] BITUMINOUS JOINT FILLER

EXPANSION AND SCORED JOINT DETAIL

PER PLANS - 10.5' MAX

1% MIN. 2% MAX.

1% MIN. 2% MAX.

4" MIN.

TYPICAL SECTION

60' MAX.

60' MAX.

EXPANSION JOINT TO EXPANSION JOINT

SEE NOTE 7

RE: PLAN

TOP OF CURB

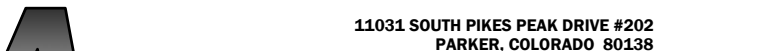
PLAN


RE: PLAN

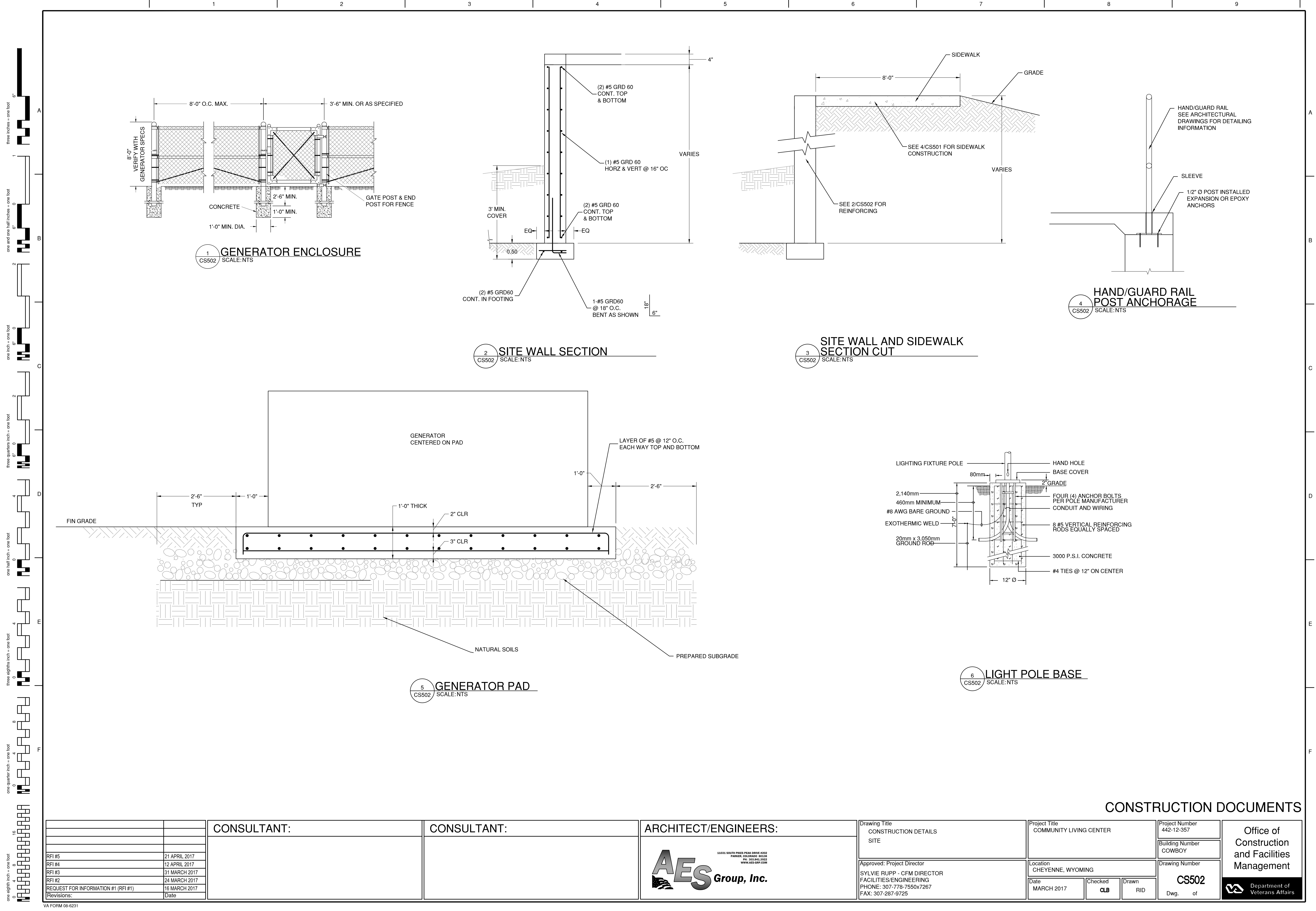
- ## GENERAL SIDEWALK NOTES:
1. EXPANSION JOINTS SHALL BE LOCATED WHERE SIDEWALK ABUTS CONCRETE DRIVEWAYS, CURB OR OTHER ADJACENT STRUCTURES.
 2. ONE-HALF INCH BITUMINOUS JOINT FILLER SHALL BE INSTALLED AT EXPANSION JOINT LOCATIONS AND SHALL EXTEND THE FULL DEPTH OF THE CONCRETE.
 3. 1" DEEP CONTRACTION JOINTS SHALL BE PLACED AT INTERVALS OF APPROXIMATELY 15' [4572mm] OR AT A SPACING THAT MATCHES THE ADJACENT CURB.
 4. FORMED CONTRACTION JOINTS SHALL BE FINISHED WITH A TOOL HAVING A 1/4" RADIUS.
 5. SCORED JOINTS SHALL BE 1/4" DEEP AND PLACED AT THE SPACING INDICATED FOR THE WIDTH OF SIDEWALK OR MATCH SCORED JOINTS OF ADJACENT CURB.
 6. CONCRETE SHALL BE FINISHED BY MEANS OF A FLOAT, STEEL TROWELLED AND BROOMED WITH A FINE BRUSH IN A TRANSVERSE DIRECTION.
 7. 1/4" DEEP SCORED JOINTS (TYP) SPACED AT 6' OR EQUAL TO SIDEWALK WIDTH.

D
E

CONSTRUCTION DOCUMENTS

		CONSULTANT:	CONSULTANT:	ARCHITECT/ENGINEERS:	Drawing Title CONSTRUCTION DETAILS ROADWAY	Project Title COMMUNITY LIVING CENTER	Project Number 442-12-357	Office of Construction and Facilities Management		
				 11001 SOUTH PINEK PEAK DRIVE #202 PARKER, COLORADO 80138 PH: 303.843.3302 WWW.AES-GRP.COM		Building Number COWBOY				
RFI #5	21 APRIL 2017				Approved: Project Director SYLVIE RUPP - CFM DIRECTOR FACILITIES/ENGINEERING PHONE: 307-778-7550x7267 FAX: 307-287-9725	Location CHEYENNE, WYOMING	Drawing Number CS501			
RFI #4	12 APRIL 2017					Date MARCH 2017	Checked CLB		Drawn RID	Dwg. of
RFI #3	31 MARCH 2017									
RFI #2	24 MARCH 2017									
REQUEST FOR INFORMATION #1 (RFI #1)	16 MARCH 2017									
Revisions:	Date									

 Department of Veterans Affairs

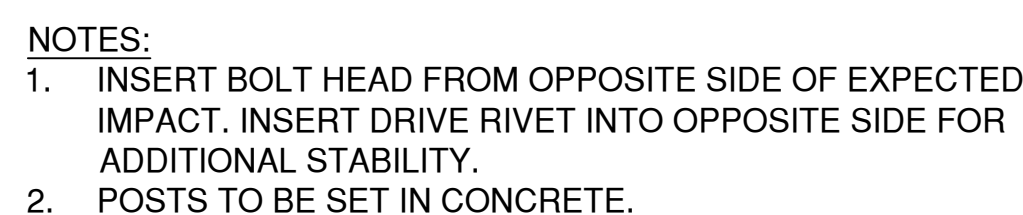


CONSTRUCTION DOCUMENTS

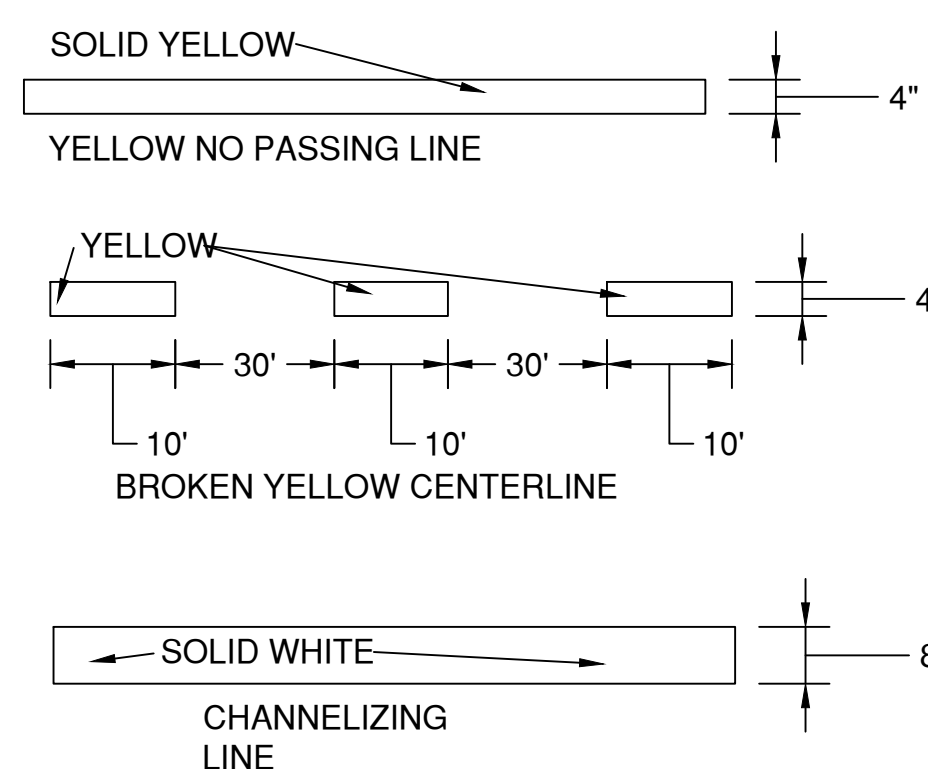
		<div>CONSULTANT:</div>	<div>CONSULTANT:</div>	<div>ARCHITECT/ENGINEERS:</div> <div><div><div><div><div></div><div></div></div><div><div></div><div></div></div></div><div><div><div><div></div><div></div></div><div><div></div><div></div></div></div><div><div><div><div></div><div></div></div><div><div></div><div></div></div></div></div><div><div><div><div></div><div></div></div><div><div></div><div></div></div></div><div><div><div><div></div><div></div></div><div><div></div><div></div></div></div></div><div><div><div><div></div><div></div></div><div><div></div><div></div></div></div></div><div><div><div><div></div><div></div></div><div><div></div><div></div></div></div></div><div><div><div><div></div><div></div></div><div><div></div><div></div></div></div></div><div><div><div><div></div><div></div></div><div><div></div><div></div></div></div></div><div><div><div><div></div><div></div></div><div><div></div><div></div></div></div></div><div><div><div><div></div><div></div></div><div><div></div><div></div></div></div></div><div><div><div><div></div><div></div></div><div><div></div><div></div></div></div></div><div><div><div><div></div><div></div></div><div><div></div><div></div></div></div></div><div><div><div><div></div><div></div></div><div><div></div><div></div></div></div></div><div><div><div><div></div><div></div></div><div><div></div><div></div></div></div></div><div><div><div><div></div><div></div></div><div><div></div><div></div></div></div></div><div><div><div><div></div><div></div></div><div><div></div><div></div></div></div></div><div><div><div><div></div><div></div></div><div><div></div><div></div></div></div></div><div><div><div><div></div><div></div></div><div><div></div><div></div></div></div></div><div><div><div><div></div><div></div></div><div><div></div><div></div></div></div></div><div><div><div><div></div><div></div></div><div><div></div><div></div></div></div></div><div><div><div><div></div><div></div></div><div><div></div><div></div></div></div></div><div><div><div><div></div><div></div></div><div><div></div><div></div></div></div></div><div><div><div><div></div><div></div></div><div><div></div><div></div></div></div></div><div><div><div><div></div><div></div></div><div><div></div><div></div></div></div></div><div><div><div><div></div><div></div></div><div><div></div><div></div></div></div></div><div><div><div><div></div><div></div></div><div><div></div><div></div></div></div></div><div><div><div><div></div><div></div></div><div><div></div><div></div></div></div></div><div><div><div><div></div><div></div></div><div><div></div><div></div></div></div></div><div><div><div><div></div><div></div></div><div><div></div><div></div></div></div></div><div><div><div><div></div><div></div></div><div><div></div><div></div></div></div></div><div><div><div><div></div><div></div></div><div><div></div><div></div></div></div></div><div><div><div><div></div><div></div></div><div><div></div><div></div></div></div></div><div><div><div><div></div><div></div></div><div><div></div><div></div></div></div></div><div><div><div><div></div><div></div></div><div><div></div><div></div></div></div></div><div><div><div><div></div><div></div></div><div><div></div><div></div></div></div></div><div><div><div><div></div><div></div></div><div><div></div><div></div></div></div></div><div><div><div><div></div><div></div></div><div><div></div><div></div></div></div></div><div><div><div><div></div><div></div></div><div><div></div><div></div></div></div></div><div><div><div><div></div><div></div></div><div><div></div><div></div></div></div></div><div><div><div><div></div><div></div></div><div><div></div><div></div></div></div></div><div><div><div><div></div><div></div></div><div><div></div><div></div></div></div></div><div><div><div><div></div><div></div></div><div><div></div><div></div></div></div></div><div><div><div><div></div><div></div></div><div><div></div><div></div></div></div></div><div><div><div><div></div><div></div></div><div><div></div><div></div></div></div></div><div><div><div><div></div><div></div></div><div><div></div><div></div></div></div></div><div><div><div><div></div><div></div></div><div><div></div><div></div></div></div></div><div><div><div><div></div><div></div></div><div><div></div><div></div></div></div></div><div><div><div><div></div><div></div></div><div><div></div><div></div></div></div></div><div><div><div><div></div><div></div></div><div><div></div><div></div></div></div></div><div><div><div><div></div><div></div></div><div><div></div><div></div></div></div></div><div><div><div><div></div><div></div></div><div><div></div><div></div></div></div></div><div><div><div><div></div><div></div></div><div><div></div><div></div></div></div></div><div><div><div><div></div><div></div></div><div><div></div><div></div></div></div></div><div><div><div><div></div><div></div></div><div><div></div><div></div></div></div></div><div><div><div><div></div><div></div></div><div><div></div><div></div></div></div></div><div><div><div><div></div><div></div></div><div><div></div><div></div></div></div></div><div><div><div><div></div><div></div></div><div><div></div><div></div></div></div></div><div><div><div><div></div><div></div></div><div><div></div><div></div></div></div></div><div><div><div><div></div><div></div></div><div><div></div><div></div></div></div></div><div><div><div><div></div><div></div></div><div><div></div><div></div></div></div></div><div><div><div><div></div><div></div></div><div><div></div><div></div></div></div></div><div><div><div><div></div><div></div></div><div><div></div><div></div></div></div></div><div><div><div><div></div><div></div></div><div><div></div><div></div></div></div></div><div><div><div><div></div><div></div></div><div><div></div><div></div></div></div></div><div><div><div><div></div><div></div></div><div><div></div><div></div></div></div></div><div><div><div><div></div><div></div></div><div><div></div><div></div></div></div></div><div><div><div><div></div><div></div></div><div><div></div><div></div></div></div></div><div><div><div><div></div><div></div></div><div><div></div><div></div></div></div></div><div><div><div><div></div><div></div></div><div><div></div><div></div></div></div></div><div><div><div><div></div><div></div></div><div><div></div><div></div></div></div></div><div><div><div><div></div><div></div></div><div><div></div><div></div></div></div></div><div><div><div><div></div><div></div></div><div><div></div><div></div></div></div></div><div><div><div><div></div><div></div></div><div><div></div><div></div></div></div></div><div><div><div><div></div><div></div></div><div><div></div><div></div></div></div></div><div><div><div><div></div><div></div></div><div><div></div><div></div></div></div></div><div><div><div><div></div><div></div></div><div><div></div><div></div></div></div></div><div><div><div><div></div><div></div></div><div><div></div><div></div></div></div></div><div><div><div><div></div><div></div></div><div><div></div><div></div></div></div></div><div><div><div><div></div><div></div></div><div><div></div><div></div></div></div></div><div><div><div><div></div><div></div></div><div><div></div><div></div></div></div></div><div><div><div><div></div><div></div></div><div><div></div><div></div></div></div></div><div><div><div><div></div><div></div></div><div><div></div><div></div></div></div></div><div><div><div><div></div><div></div></div><div><div></div><div></div></div></div></div><div><div><div><div></div><div></div></div><div><div></div><div></div></div></div></div><div><div><div><div></div><div></div></div><div><div></div><div></div></div></div></div><div><div><div><div></div><div></div></div><div><div></div><div></div></div></div></div><div><div><div><div></div><div></div></div><div><div></div><div></div></div></div></div><div><div><div><div></div><div></div></div><div><div></div><div></div></div></div></div><div><div><div><div></div><div></div></div><div><div></div><div></div></div></div></div><div><div><div><div></div><div></div></div><div><div></div><div></div></div></div></div><div><div><div><div></div><div></div></div><div><div></div><div></div></div></div></div><div><div><div><div></div><div></div></div><div><div></div><div></div></div></div></div><div><div><div><div></div><div></div></div><div><div></div><div></div></div></div></div><div><div><div><div></div><div></div></div><div><div></div><div></div></div></div></div><div><div><div><div></div><div></div></div><div><div></div><div></div></div></div></div><div><div><div><div></div><div></div></div><div><div></div><div></div></div></div></div><div><div><div><div></div><div></div></div><div><div></div><div></div></div></div></div><div><div><div><div></div><div></div></div><div><div></div><div></div></div></div></div><div><div><div><div></div><div></div></div><div><div></div><div></div></div></div></div><div><div><div><div></div><div></div></div><div><div></div><div></div></div></div></div><div><div><div><div></div><div></div></div><div><div></div><div></div></div></div></div><div><div><div><div></div><div></div></div><div><div></div><div></div></div></div></div><div><div><div><div></div><div></div></div><div><div></div><div></div></div></div></div><div><div><div><div></div><div></div></div><div><div></div><div></div></div></div></div><div><div><div><div></div><div></div></div><div><div></div><div></div></div></div></div><div><div><div><div></div><div></div></div><div><div></div><div></div></div></div></div><div><div><div><div></div><div></div></div><div><div></div><div></div></div></div></div><div><div><div><div></div><div></div></div><div><div></div><div></div></div></div></div><div><div><div><div></div><div></div></div><div><div></div><div></div></div></div></div><div><div><div><div></div><div></div></div><div><div></div><div></div></div></div></div><div><div><div><div></div><div></div></div><div><div></div><div></div></div></div></div><div><div><div><div></div><div></div></div><div><div></div><div></div></div></div></div><div><div><div><div></div><div></div></div><div><div></div><div></div></div></div></div><div><div><div><div></div><div></div></div><div><div></div><div></div></div></div></div><div><div><div><div></div><div></div></div><div><div></div><div></div></div></div></div><div><div><div><div></div><div></div></div><div><div></div><div></div></div></div></div><div><div><div><div></div><div></div></div><div><div></div><div></div></div></div></div><div><div><div><div></div><div></div></div><div><div></div><div></div></div></div></div><div><div><div><div></div><div></div></div><div><div></div><div></div></div></div></div><div><div><div><div></div><div></div></div><div><div></div><div></div></div></div></div><div><div><div><div></div><div></div></div><div><div></div><div></div></div></div></div><div><div><div><div></div><div></div></div><div><div></div><div></div></div></div></div><div><div><div><div></div><div></div></div><div><div></div><div></div></div></div></div><div><div><div><div></div><div></div></div><div><div></div><div></div></div></div></div><div><div><div><div></div><div></div></div><div><div></div><div></div></div></div></div><div><div><div><div></div><div></div></div><div><div></div><div></div></div></div></div><div><div><div><div></div><div></div></div><div><div></div><div></div></div></div></div><div><div><div><div></div><div></div></div><div><div></div><div></div></div></div></div><div><div><div><div></div><div></div></div><div><div></div><div></div></div></div></div><div><div><div><div></div><div></div></div><div><div></div><div></div></div></div></div><div><div><div><div></div><div></div></div><div><div></div><div></div></div></div></div><div><div><div><div></div><div></div></div><div><div></div><div></div></div></div></div><div><div><div><div></div><div></div></div><div><div></div><div></div></div></div></div><div><div><div><div></div><div></div></div><div><div></div><div></div></div></div></div><div><div><div><div></div><div></div></div><div><div></div><div></div></div></div></div><div><div><div><div></div><div></div></div><div><div></div><div></div></div></div></div><div><div><div><div></div><div></div></div><div><div></div><div></div></div></div></div><div><div><div><div></div><div></div></div><div><div></div><div></div></div></div></div><div><div><div><div></div><div></div></div><div><div></div><div></div></div></div></div><div><div><div><div></div><</div></div></div></div></div></div></div>
--	--	------------------------	------------------------	---



1. NO NEW SIGNAGE IS PROVIDED AS PART OF THIS PROJECT.
2. CONTRACTOR TO REPLACE ANY DAMAGED SIGNS IN KIND.
3. ALL SIGN PANELS, POSTS, FOUNDATIONS AND HARDWARE WILL BE CONTRACTOR FURNISHED, CONTRACTOR INSTALLED. THE CONTRACTOR SHALL BE RESPONSIBLE FOR INSTALLING ALL SIGNS.
4. STEEL SIGN POSTS SHALL BE 12-GAUGE PERFORATED STEEL TUBING. HOLES SHALL BE APPROXIMATELY 7/16" DIAMETER SPACED APPROXIMATELY 1" ON CENTERS.
5. SIGN PANELS SHALL BE SINGLE SHEET ALUMINUM, 0.080" MINIMUM THICKNESS.
6. SIGN PANELS SHALL BE FASTENED DIRECTLY TO THE POST. FASTEN TO SQUARE TUBE POSTS WITH TWO 1/4" DIA. -20 UNC STOVE BOLTS.
7. A FIBER WASHER SHALL BE PLACED BETWEEN THE BOLT HEAD AND THE FACE OF THE SIGN PANEL.
8. EXISTING SIGNS SHOWN TO BE REMOVED AND NOT REUSED SHALL BE RETURNED TO THE COR.
9. THE CONTRACTOR SHALL PROVIDE ALL TEMPORARY SIGNS AND BARRICADES AS REQUIRED DURING CONSTRUCTION IN ACCORDANCE WITH THE MANUAL ON UNIFORM TRAFFIC CONTROL DEVICES.



TABULATION OF SIGNS								
SIGN NO.	SIGN CODE	STATION	SIGN PANEL SIZE	SIGN PANEL (S.F.)	BACKGROUND COLOR	M	LEGEND	MISC.
01								



RFI #5	21 APRIL 2017
RFI #4	12 APRIL 2017
RFI #3	31 MARCH 2017
RFI #2	24 MARCH 2017
REQUEST FOR INFORMATION #1 (RFI #1)	16 MARCH 2017
Revisions:	Date

CONSULTANT:

CONSULTANT:

ARCHITECT/ENGINEERS:



Drawing Title	CONSTRUCTION DETAILS SIGNAGE & STRIPING
---------------	--

Approved: Project Director
SYLVIE RUPP - CFM DIRECTOR
FACILITIES/ENGINEERING
PHONE: 307-778-7550x7267
FAX: 307-287-9725

Project Title	COMMUNITY LIVING CENTER
---------------	-------------------------

	Location
	CHEYENNE, WYOMING

Checked	CLB
---------	-----

	Project Number 442-12-357
--	------------------------------

Building Number
COWBOY

	Drawing Number

CS503

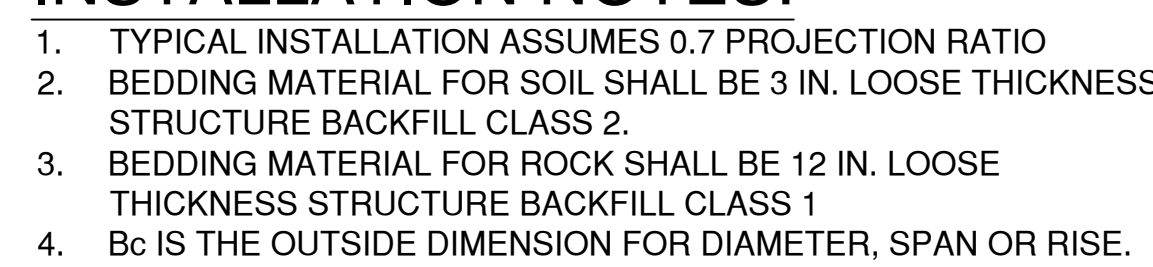
Dwa. of

Office of
Construction
and Facilities
Management



CONSTRUCTION DOCUMENTS

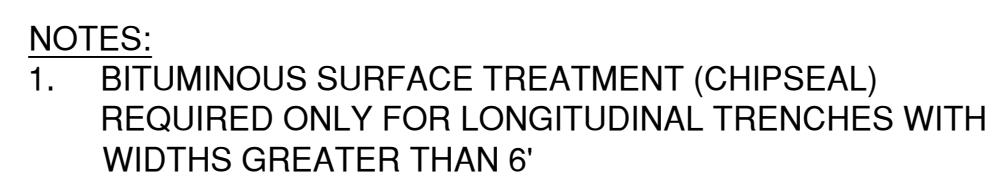
9



2 TYPICAL PIPE INSTALLATION
CU502 SCALE:NTS

1. MINIMUM COVER FOR REINFORCED CONCRETE PIPE IS THE PAVEMENT THICKNESS PLUS ONE FOOT.
2. FILL HEIGHTS GREATER THAN MAXIMUM ALLOWED IN THE HEIGHTS OF FILL TABLE ON THIS SHEET WILL REQUIRE SPECIAL DESIGN OF STRUCTURE.
3. PIPE DESIGN IS BASED ON SAFETY FACTOR OF 1.33 ON ULTIMATE STRENGTH.
4. THE HEIGHTS OF FILL OVER TOP OF PIPE ARE BASED ON UNIT WEIGHT OF SOIL AT 120 LBS. PER CUBIC FOOT.
5. PIPE CLASS IS DETERMINED FROM 0.01 INCH CRACK D-LOAD.
6. BEDDING IS 3000 PSI(MODIFIED) (FROM CONCRETE PIPE DESIGN MANUAL-AMERICAN CONCRETE PIPE INSTITUTE) WITH SETTLEMENT ALLOWED TO BE 0.2" (YIELDING BED).
7. CHANGES IN DESIGN FACTORS WILL REQUIRE COMPENSATING CHANGE IN PIPE DESIGN.
8. MINIMUM WALL THICKNESS DIMENSIONS ARE BASED ON AASHTO M 170 (WALL B) FOR CIRCULAR PIPE, AND AASHTO M 207 FOR ELLIPTICAL PIPE.
9. WHEN A CULVERT IS TO BE EXTENDED WITH PIPE OF DIFFERENT MATERIAL, THE CONNECTION SHALL CONFORM TO THE DETAIL ON PLANS OR BE APPROVED.

ALLOWABLE FILL HEIGHT FOR RCP					
PIPE TYPE	ALLOWABLE FILL HEIGHT IN FEET				
	CLASS OF PIPE - 0.01" CRACK D-LOAD				
	CLASS CIR II CLASS VE II CLASS HE II 1000 D	CLASS CIR III CLASS VE III CLASS HE III 1350 D	CLASS CIR IV CLASS HE IV 2000 D	CLASS CIR V CLASS VE V 3000 D	CLASS VE VI 4000 D
CIRCULAR	MIN TO 18	MIN TO 25	±25 TO 37	±37 TO 45	-----
VERTICAL ELLIPTICAL (VE)	MIN TO 18	MIN TO 25	±25 TO 37	±37 TO 45	±45 TO 62
HORIZONTAL ELLIPTICAL (HE)	MIN TO 18	MIN TO 25	±25 TO 37	-----	-----



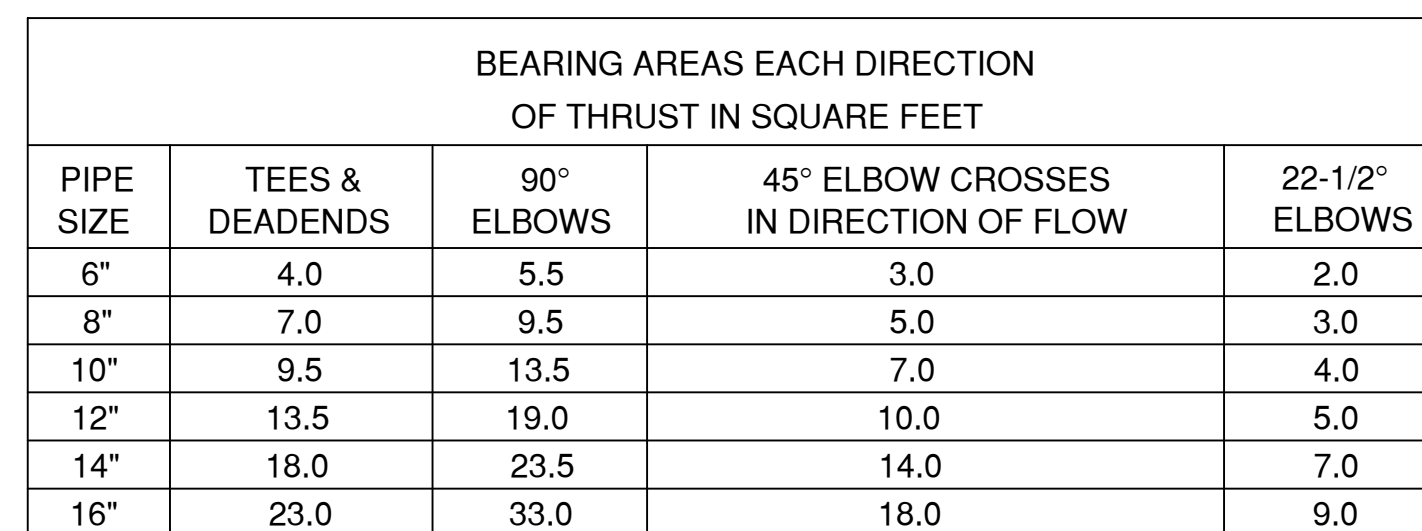
1. MATERIAL AND COMPACTION REQUIREMENTS FOR PIPE BEDDING/SHADING SHALL BE IN ACCORDANCE WITH THE SPECIFICATIONS FOR THE APPLICABLE UTILITY PIPE.
2. TRENCH BACKFILL SHALL COMMENCE 1 FOOT ABOVE THE TOP OF PIPE AND SHALL BE PER SECTION 31 20 11 EARTHMOVING. BACKFILL COMPACTION REQUIREMENTS SHALL BE PER SECTION 31 20 11 EARTHMOVING.
4. ABC SHALL BE IN ACCORDANCE WITH THE REQUIREMENTS OF SECTION 31 20 11 EARTHMOVING.
5. PORTLAND CEMENT CONCRETE SHALL BE IN ACCORDANCE WITH THE REQUIREMENTS OF SECTION 32 05 23 CEMENT AND CONCRETE FOR EXTERIOR IMPROVEMENTS.
6. ASPHALTIC TACK MATERIAL SHALL BE IN ACCORDANCE WITH THE REQUIREMENTS OF SECTION 32 12 16 ASPHALTIC PAVING.
7. ASPHALTIC CONCRETE SHALL BE IN ACCORDANCE WITH THE REQUIREMENTS OF SECTION 32 12 16 ASPHALTIC PAVING FOR THE TYPE SPECIFIED.
8. BITUMINOUS SURFACE TREATMENT (CHIP SEAL) SHALL BE IN ACCORDANCE WITH THE REQUIREMENTS OF SECTION 32 12 16 ASPHALTIC PAVING FOR THE TYPE SPECIFIED.

CU502 SCALE: NTS

VA FORM 08-6231



FIRE HYDRANTS
LOCATION & INSTALLATION



5 INSTA
CU503 SCALE:NTS



BEARING AREAS EACH DIRECTION OF THRUST IN SQUARE FEET				
PIPE SIZE	TEES & DEADENDS	90° ELBOWS	45° ELBOW CROSSES IN DIRECTION OF FLOW	22-1/2° ELBOWS
6"	4.0	5.5	3.0	2.0
8"	7.0	9.5	5.0	3.0
10"	9.5	13.5	7.0	4.0
12"	13.5	19.0	10.0	5.0
14"	18.0	23.5	14.0	7.0
16"	23.0	33.0	18.0	9.0

CONSULTANT:	

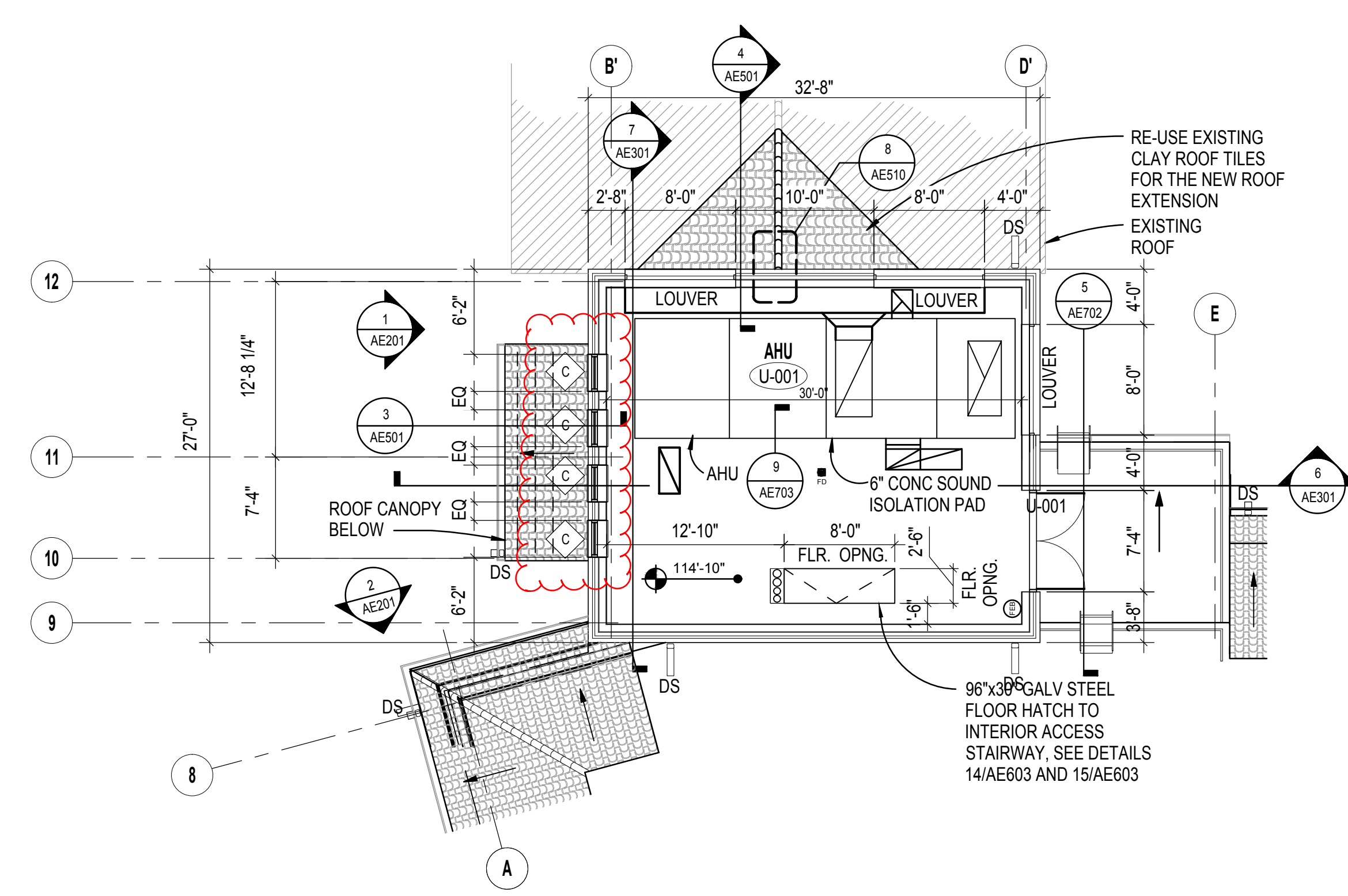
ARCHITECT/ENGINEERS:

AES 11011 SOUTH PIKES PEAK DRIVE #202
 PARKER, COLORADO 80131
 PH: 303.843.3922
 WWW.AES-GRP.COM

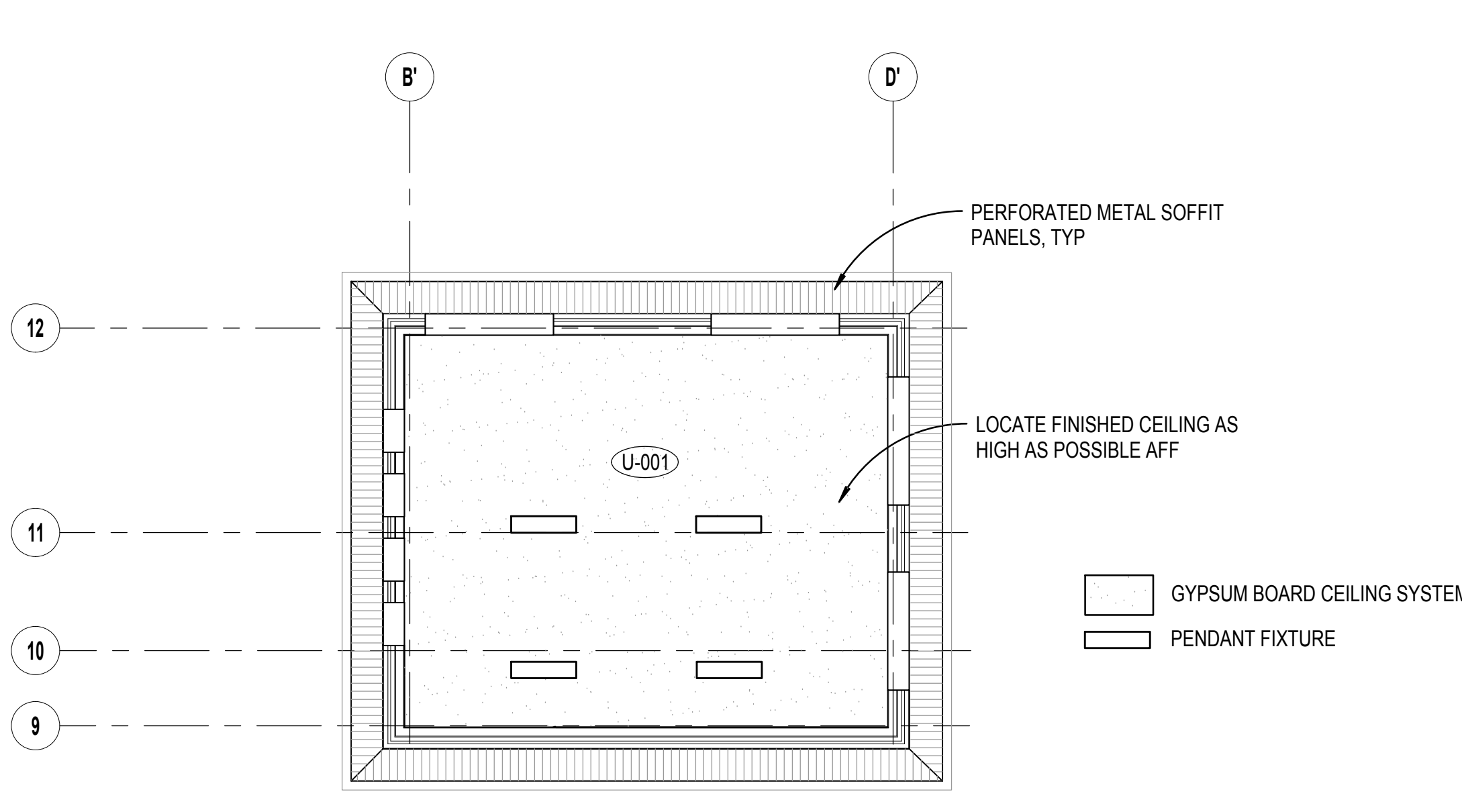
AES Group, Inc.

Project Title COMMUNITY LIVING CENTER			Project Number 442-12-357	
			Building Number COWBOY	
Location CHEYENNE, WYOMING			Drawing Number	
Date MARCH 2017	Checked CLB	Drawn RID	CU503 Dwg. of	

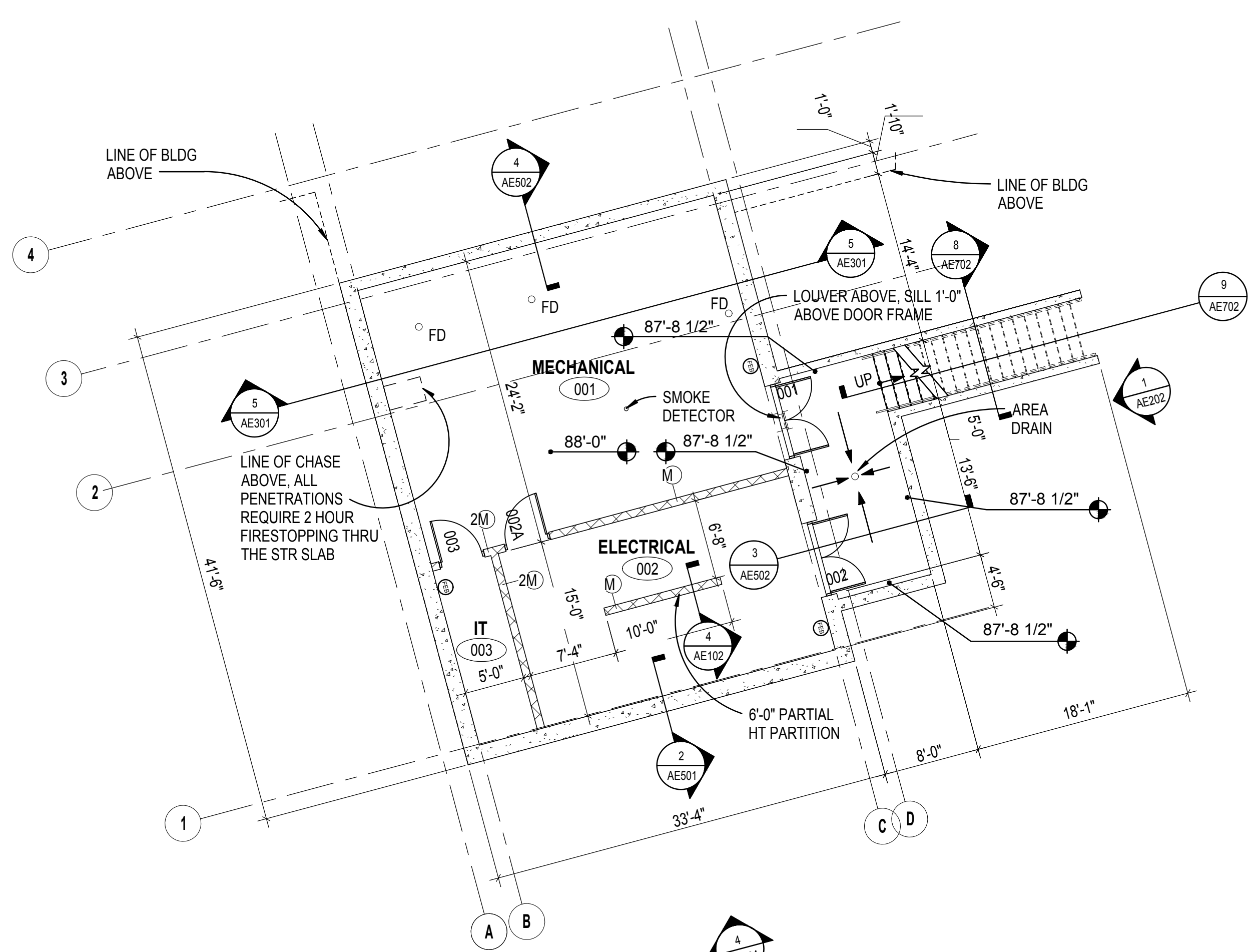
three inches = one foot
one and one half inches = one foot
one inch = one foot
three quarters inch = one foot
one half inch = one foot
one quarter inch = one foot
one eighth inch = one foot
one sixteenth inch = one foot



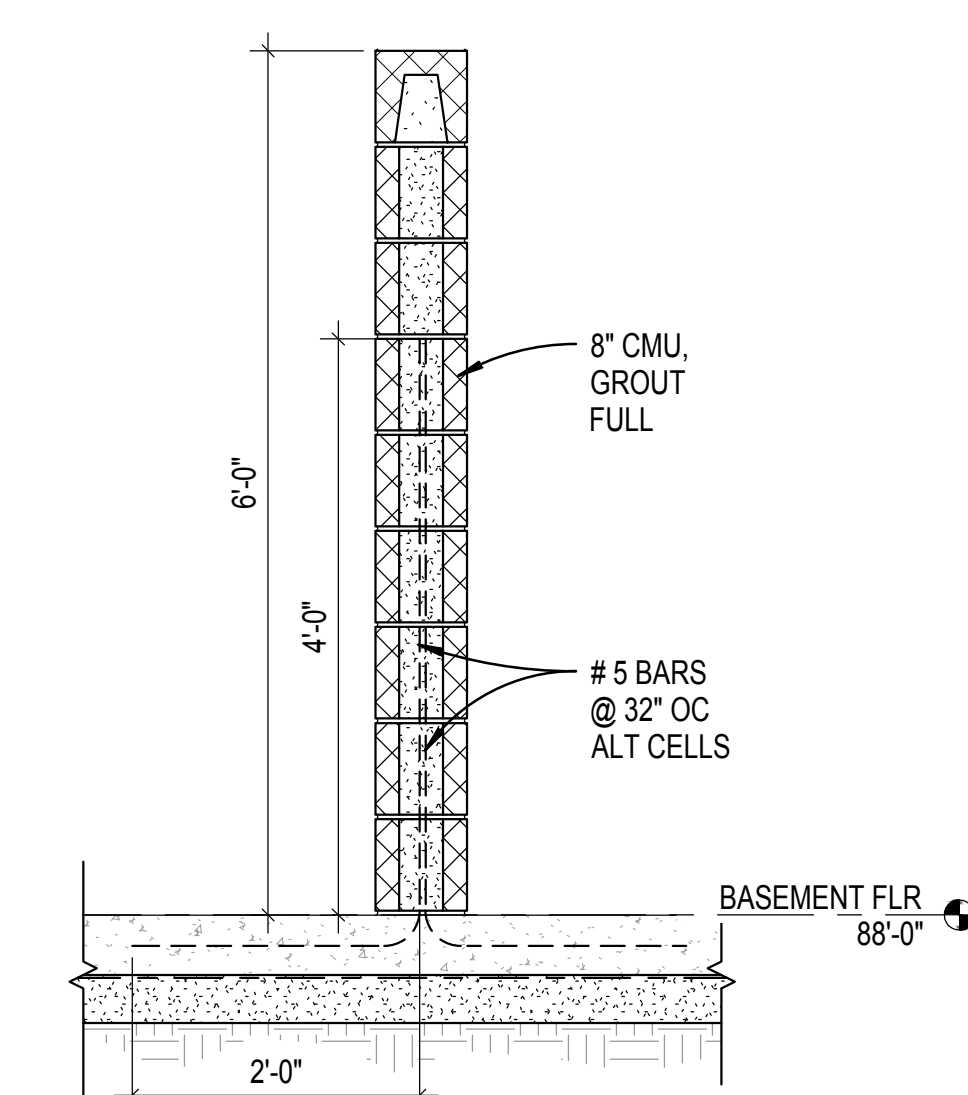
1 PENTHOUSE PLAN
SCALE: 1/8" = 1'-0"



2 PENTHOUSE REFLECTED CEILING PLAN
SCALE: 1/8" = 1'-0"



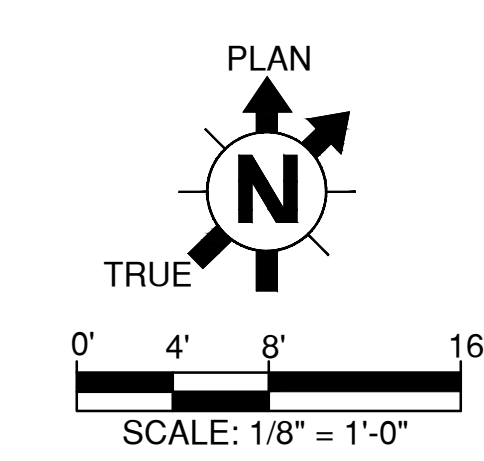
3 BASEMENT FLOOR PLAN
SCALE: 1/8" = 1'-0"



4 PARTIAL HT CMU WALL
SCALE: 3/4" = 1'-0"

GENERAL NOTES

1. LOCATE INTERIOR DOOR FRAMES 4 INCHES FROM FINISH FACE OF ADJACENT PARTITION AT HINGE SIDE, TYP UNO.
2. PROVIDE PLYWOOD BACKING FOR ELECTRICAL ROOM AS REQUIRED FOR EQUIPMENT SPECIFIED.
3. COORDINATE MOUNTING LOCATIONS FOR ALL ACCESSORIES AND APPURTENANCES IN PARTICULAR THOSE THAT OCCUR ON OPPOSITE SIDES OF A PARTITION TO AVOID CONFLICT AND SOUND TRANSMISSION.
4. ALL PARTITION TYPES ARE TYPE S , UNO. SEE SHEET AE701 FOR PARTITION TYPES.
5. SEE SHEET AE801 FOR DOOR / FRAME SCHEDULE, AND SHEET AE811 FOR DOOR AND WINDOW TYPES AND DETAILS.
6. SEE SHEET AE901 FOR ROOM FINISH SCHEDULE.



CONSTRUCTION DOCUMENTS

		CONSULTANT:	CONSULTANT:	ARCHITECT/ENGINEERS:	Drawing Title	Project Title	Project Number	Office of Construction and Facilities Management Department of Veterans Affairs	
		<div>LEO A DAILY</div> <div>PLANNING ARCHITECTURE ENGINEERING INTERIORS</div> <div>EST. 1919</div> <div>3455 Ringsby Court #103 Denver, CO 80216 US Tel 303.756.2100 Fax 303.757.2350</div>		<div>AES</div> <div>11033 SOUTH PUEBLO PEAK DRIVE #202 PARKER, COLORADO 80130 PH: 303.841.3922 WWW.AES-GRP.COM</div> <div>Group, Inc.</div>	PENTHOUSE FLOOR / BASEMENT AND REFLECTED CEILING PLAN	COMMUNITY LIVING CENTER	442-12-357		
RFI #5	21 APRIL 2017								Building Number
RFI #4	12 APRIL 2017								COWBOY
RFI #3	31 MARCH 2017								Drawing Number
RFI #2	24 MARCH 2017				Approved: Project Director SYLVIE RUPP - CFM DIRECTOR FACILITIES/ENGINEERING PHONE: 307-778-7550x7267 FAX: 307-287-9725	CHEYENNE, WYOMING	AE102		
REQUEST FOR INFORMATION #1 (RFI #1)	16 MARCH 2017					Date	Checked	Drawn	Dwg. of
Revisions:	Date					MARCH 2017	BFH	CDE	