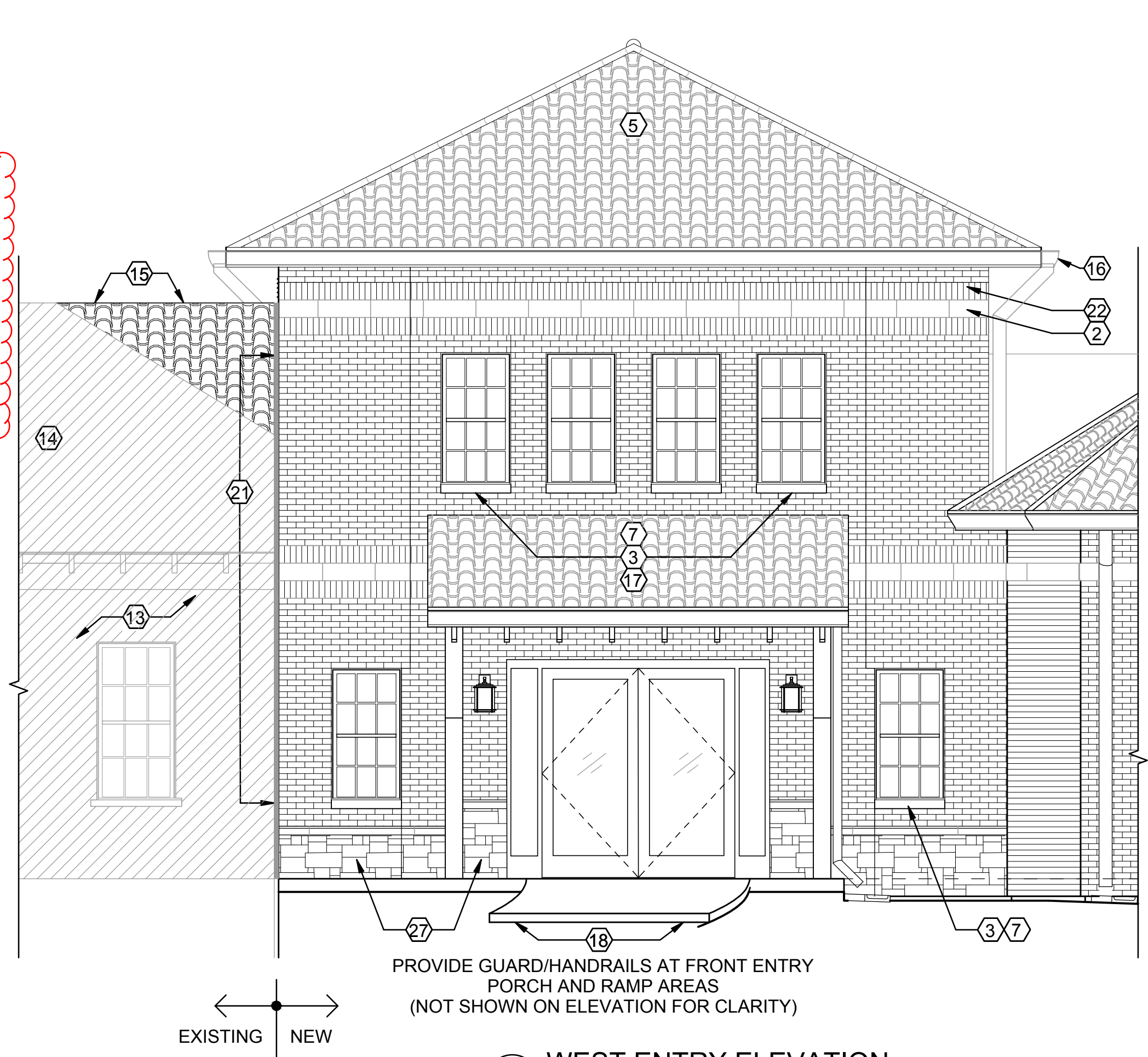
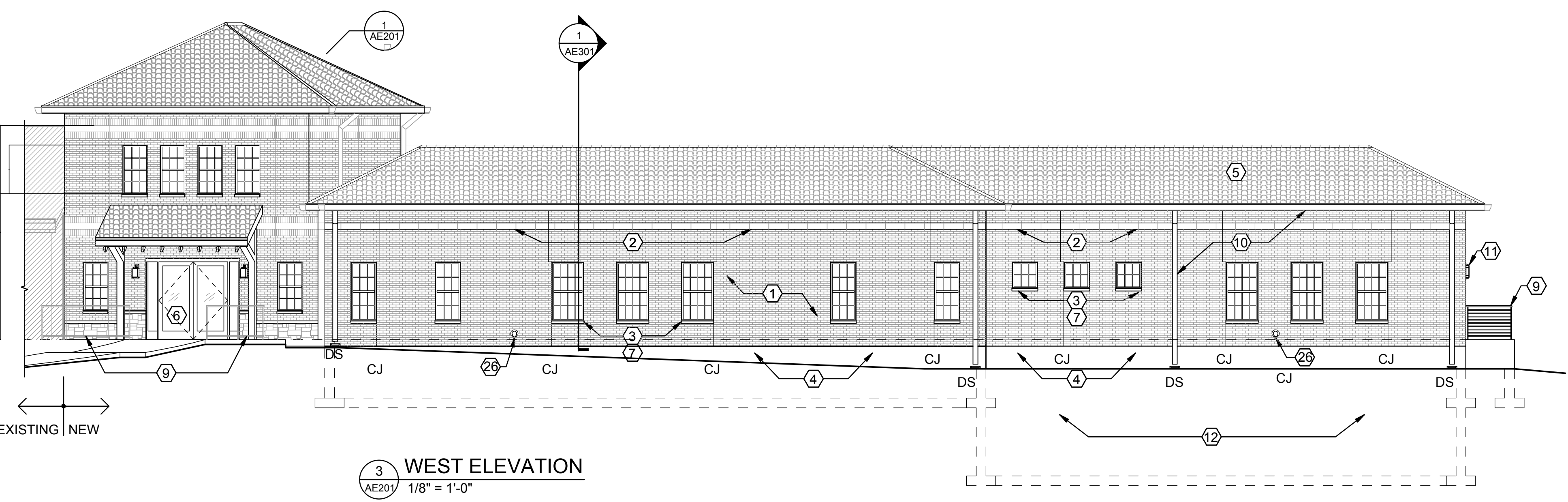


three inches = one foot
one and one half inches = one foot
one inch = one foot
three quarters inch = one foot
one half inch = one foot
one quarter inch = one foot
one eighth inch = one foot

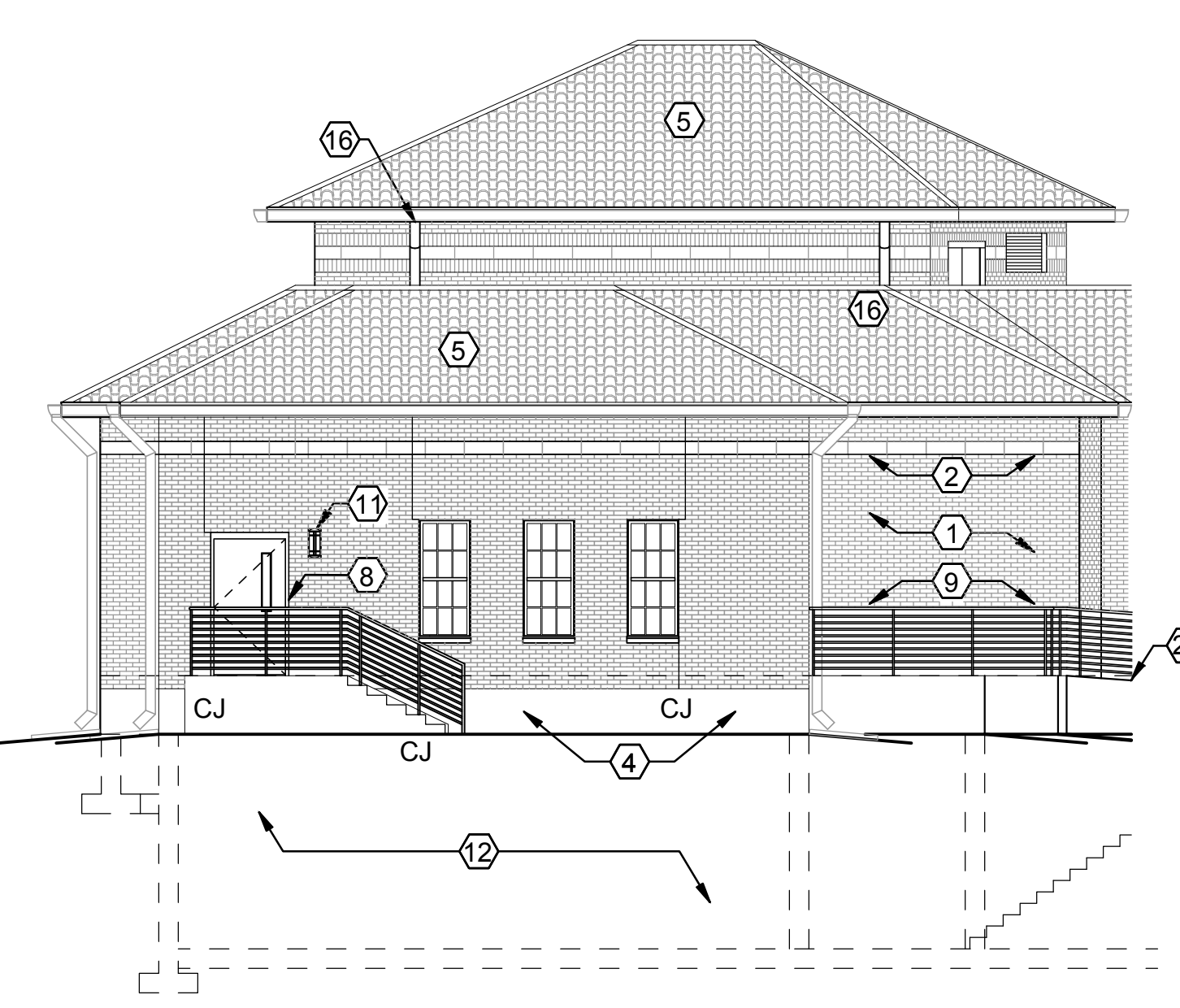
- T.O. PENTHOUSE ROOF
+/- 132' - 0"
- ROOF BEARING
124' - 0"
- T.O. ACCENT SOLDIER COURSE
122' - 8"
- T.O. ACCENT STONE BANDING
122' - 0"
- T.O. ACCENT SOLDIER COURSE
121' - 4"
- PENTHOUSE WINDOW HEAD
120' - 0"
- PENTHOUSE FINISH FLOOR
114' - 10"
- T.O. ACCENT SOLDIER COURSE
112' - 8"
- T.O. ACCENT STONE BANDING
112' - 0"
- T.O. ACCENT SOLDIER COURSE
111' - 4"
- T.O. DOOR/ENTRY AREA WINDOWS
108' - 0"
- T.O. WATER TABLE COURSE
103' - 0"
- T.O. WATER TABLE COURSE
102' - 0"
- NEW/EXISTING FINISH FLOOR
100' - 0"
- T.O. PENTHOUSE ROOF
132' - 4"
- HIGH ROOF BEARING
124' - 0"
- PENTHOUSE WINDOW HEAD
120' - 0"
- PENTHOUSE FINISH FLOOR
114' - 10"
- T.O. ACCENT
112' - 0"
- WINDOW SILL AT KITCHEN
105' - 4"
- WINDOW SILL AT ENTRY
103' - 0"
- NEW/EXISTING FINISH FLOOR
100' - 0"
- FINISH GRADE
RE: CIVIL DRAWINGS
- T.O. BASEMENT SLAB
86' - 0"
- HIGH ROOF BEARING
124' - 0"
- 1ST FLOOR ROOF BEARING
114' - 0"
- T.O. ACCENT
112' - 0"
- WINDOW HEAD
108' - 0"
- WINDOW SILL
102' - 0"
- NEW/EXISTING FINISH FLOOR
100' - 0"
- T.O. BASEMENT SLAB
86' - 0"
- T.O. PENTHOUSE ROOF
+/- 132' - 0"
- ROOF BEARING
124' - 0"
- T.O. ACCENT SOLDIER COURSE
122' - 8"
- T.O. ACCENT STONE BANDING
122' - 0"
- T.O. ACCENT SOLDIER COURSE
121' - 4"
- PENTHOUSE WINDOW HEAD
120' - 0"
- PENTHOUSE FINISH FLOOR
114' - 10"
- T.O. ACCENT SOLDIER COURSE
112' - 8"
- T.O. ACCENT STONE BANDING
112' - 0"
- T.O. ACCENT SOLDIER COURSE
111' - 4"
- NEW/EXISTING FINISH FLOOR
100' - 0"
- FINISH GRADE
RE: CIVIL DRAWINGS



1 WEST ENTRY ELEVATION
1/4" = 1'-0"

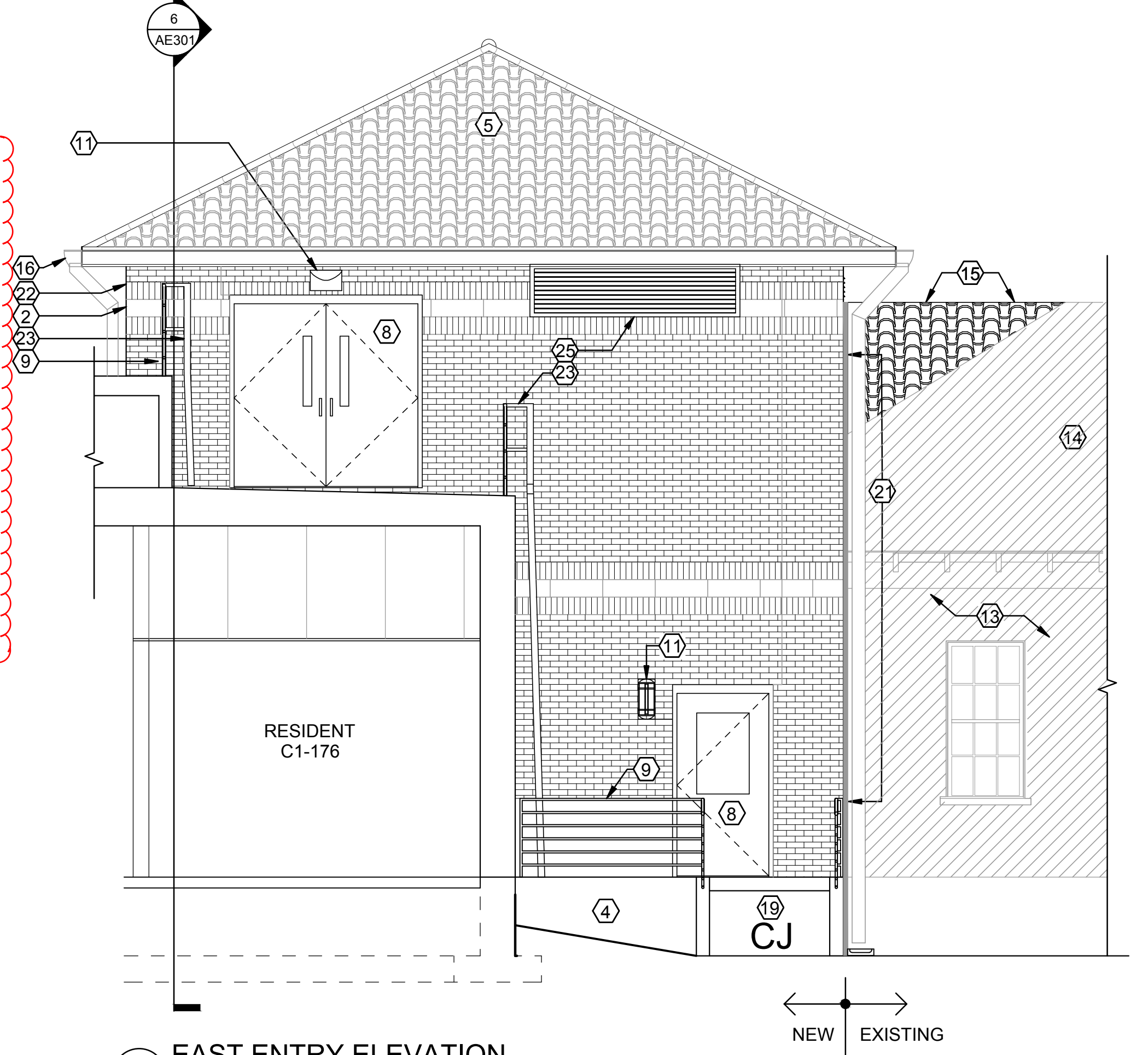


3 WEST ELEVATION
1/8" = 1'-0"



4 SOUTH ELEVATION AT SOUTH WING
1/8" = 1'-0"

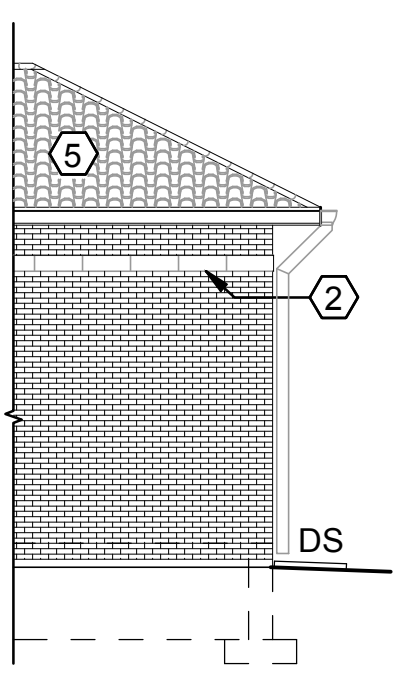
- T.O. PENTHOUSE ROOF
+/- 132' - 0"
- ROOF BEARING
124' - 0"
- T.O. ACCENT SOLDIER COURSE
122' - 8"
- T.O. ACCENT STONE BANDING
122' - 0"
- T.O. ACCENT SOLDIER COURSE
121' - 4"
- PENTHOUSE WINDOW HEAD
120' - 0"
- PENTHOUSE FINISH FLOOR
114' - 10"
- T.O. ACCENT SOLDIER COURSE
112' - 8"
- T.O. ACCENT STONE BANDING
112' - 0"
- T.O. ACCENT SOLDIER COURSE
111' - 4"
- NEW/EXISTING FINISH FLOOR
100' - 0"
- FINISH GRADE
RE: CIVIL DRAWINGS



5 EAST ENTRY ELEVATION
1/4" = 1'-0"

ADJUSTMENT TO SEVERAL CONTROL JOINTS (CJ)

- T.O. ROOF
120' - 0"
- ROOF BEARING
114' - 0"
- T.O. ACCENT
112' - 0"
- NEW/EXISTING FINISH FLOOR
100' - 0"
- FINISH GRADE
RE: CIVIL DRAWINGS



2 NORTH ELEVATION AT WEST ENTRY AREA
1/8" = 1'-0"

GENERAL NOTES

- EXTERIOR FINISHES SHALL MATCH EXISTING CAMPUS / BUILDING STANDARD MATERIAL FINISHES AND COLORS, TYP UNO.
- EXISTING BUILDING DRAWING SHOWN FOR REFERENCE ONLY, AND MAY NOT BE TRUE TO SCALE. FIELD VERIFY EXISTING CONDITIONS.
- ALL KEYNOTES ARE NOT APPLICABLE TO EACH ELEVATION

KEYNOTES

- FACE BRICK CLADDING TO MATCH EXISTING COLOR, TEXTURE AND BOND PATTERN, TYP UNO.
- ROCKED TEXTURE "ARRISCRAFT RENAISSANCE STONE" MASONRY ACCENT COURSE, MATCH EXISTING ORIGINAL ACCENT COURSING.
- ROCKED TEXTURE "ARRISCRAFT RENAISSANCE STONE" MASONRY SILL, MATCH EXISTING ORIGINAL SILL COLOR.
- ARCHITECTURAL CONCRETE PLINTH WITH CAST/STAMPED STONE FACE PATTERN TO MATCH EXISTING ORIGINAL STONE PLINTH COURSING.
- CLAY TILE MANSARD ROOF TO MATCH EXISTING CAMPUS STANDARD: "LUDOWICI 18-3/8 INCH LONG STRAIGHT BARREL MISSION".
- ALUMINUM FRAME DOOR ENTRANCE AND STOREFRONT.
- ALUMINUM FRAME WINDOW WITH BETWEEN GLASS MUNTIN GRIDS, TYP UNO.
- INSULATED HOLLOW METAL DOOR AND HOLLOW METAL FRAME, PAINT.
- GALVANIZED STEEL GUARD/HANDRAILS, PAINT.
- PRE-FINISHED METAL GUTTERS AND DOWNSPOUTS. PROVIDE CONCRETE SPLASH BLOCKS AT FINISH GRADE AREAS.
- EXTERIOR LIGHTING, RE: ELECTRICAL DRAWINGS.
- BASEMENT MECHANICAL/ELECTRICAL AREAS.
- EXISTING FACE BRICK CLADDING AND LIMESTONE ACCENT COURSE.
- EXISTING CLAY TILE ROOF.
- OVER-FRAME HIP AREA OF EXISTING ROOF TO EXTEND RIDGE LINE TO NEW STRUCTURE. REUSE EXISTING CLAY TILE TO GREATEST EXTENT POSSIBLE. IF ADDITIONAL CLAY TILE IS REQUIRED, BLEND COLORS TO ACHIEVE HARMONIOUS COLOR WITHOUT BLOTCHES, HOT SPOTS OR PATTERNS.
- DOWNSPOUT TO ROOF BELOW.
- ENTRANCE CANOPY WITH CLAY TILE ROOF.
- RAMP AT WEST MAIN ENTRY AREA TO "CIRCLE OF FLAGS," PROVIDE GUARD/HAND RAILS. PROVIDE 1:20 SLOPE PER VA REQUIREMENTS, RE: CIVIL DRAWINGS.
- RAMP AT EAST ENTRY AREA TO SMOKING AREA. PROVIDE GUARD/HAND RAILS. PROVIDE 1:20 SLOPE PER VA REQUIREMENTS, RE: CIVIL DRAWINGS.
- RAMP AT SOUTH EAST CORRIDOR EXIT TO BASEMENT ACCESS AREA. PROVIDE GUARD/HAND RAILS. PROVIDE 1:20 SLOPE PER VA REQUIREMENTS, RE: CIVIL DRAWINGS.
- 2 INCH BUILDING EXPANSION JOINT, USE "EMSEAL: COLORSEAL SYSTEM," OR EQUAL. COLOR SHALL MATCH ADJACENT BRICK VENEER.
- FACE BRICK ACCENT COURSING TO MATCH EXISTING FACE BRICK.
- ROOF ACCESS LADDER.
- ATTIC ACCESS DOOR.
- METAL LOUVERS TO MATCH METAL TRIM. RE: MECHANICAL DRAWINGS.
- ROOF OVERFLOW DRAIN NOZZEL.
- ARRISCRAFT BUILDING STONE WAINSCOT WITH ARRISCRAFT WATERTABLE UNIT COURSING.

EXTERIOR FINISH LEGEND

FIELD BRICK VENEER CLADDING:
FACE BRICK TO MATCH EXISTING CAMPUS STANDARD COLOR, TEXTURE AND BOND COURSING.

HORIZONTAL CAST STONE ACCENT COURSE:
ARRISCRAFT RENAISSANCE FULL BED, ROCKED TEXTURE, HEIGHT AND COLOR TO MATCH EXISTING LIMESTONE COURSE.

CAST STONE WINDOW SILLS:
ARRISCRAFT RENAISSANCE SILL UNITS, FULL BED, ROCKED VERTICAL FACE, 4 INCH NOMINAL HEIGHT, COLOR TO MATCH EXISTING LIMESTONE ELEMENTS.

ENTRY/PENTHOUSE WAINSCOT:
ARRISCRAFT BUILDING STONE: CITADEL, TUMBLED, 4-UNIT BOND, NOMINAL SIZES: LENGTHS RANDOM, 4 INCH BED, 2.5 / 5.5 AND 8 INCHES HIGH, COLOR TO MATCH EXISTING LIMESTONE ELEMENTS.

ENTRY/PENTHOUSE ACCENT COURSING:
FACE BRICK SOLDIER COURSE ABOVE AND BELOW CAST STONE ACCENT COURSE.

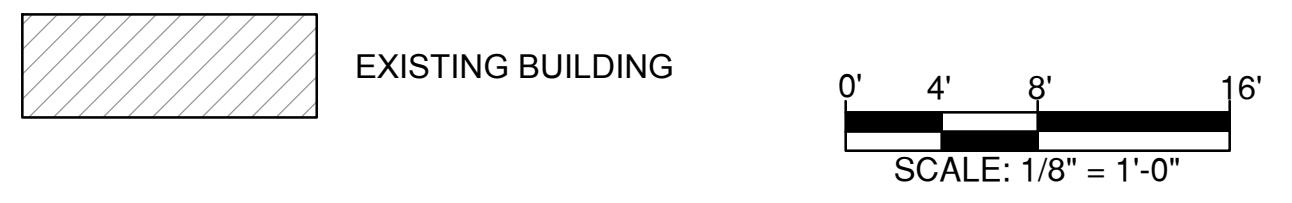
CAST CONCRETE PLINTH: COLOR TO MATCH EXISTING LIMESTONE ELEMENTS.

DOORS / DOOR FRAMES, WINDOW FRAMES: CHAMPAGNE


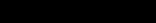
GUARD/HANDRAILS, GUTTERS/DOWNSPOUTS: CHAMPAGNE

MISCELLANEOUS METAL TRIM: CHAMPAGNE

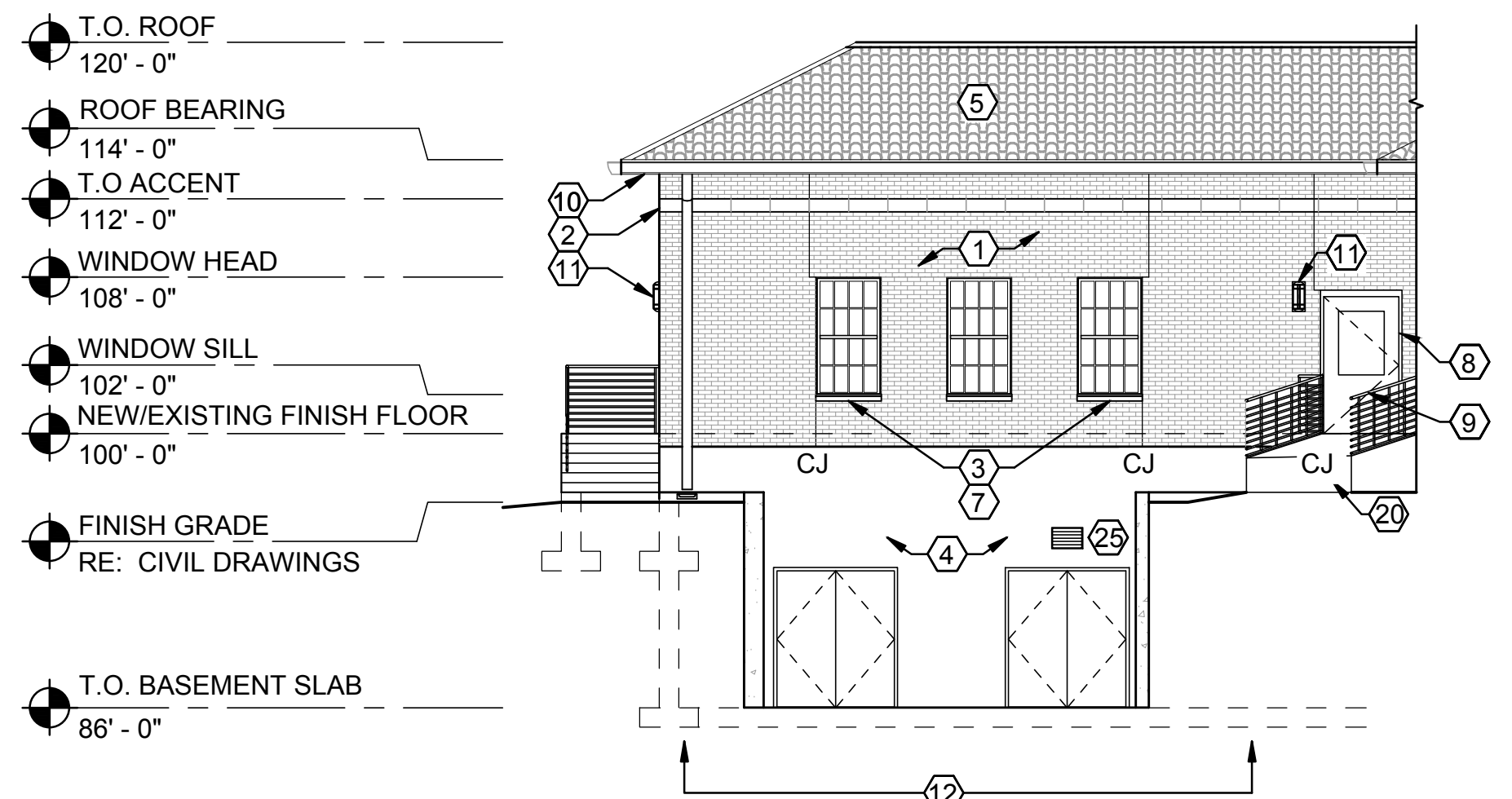
GLAZING: CLEAR



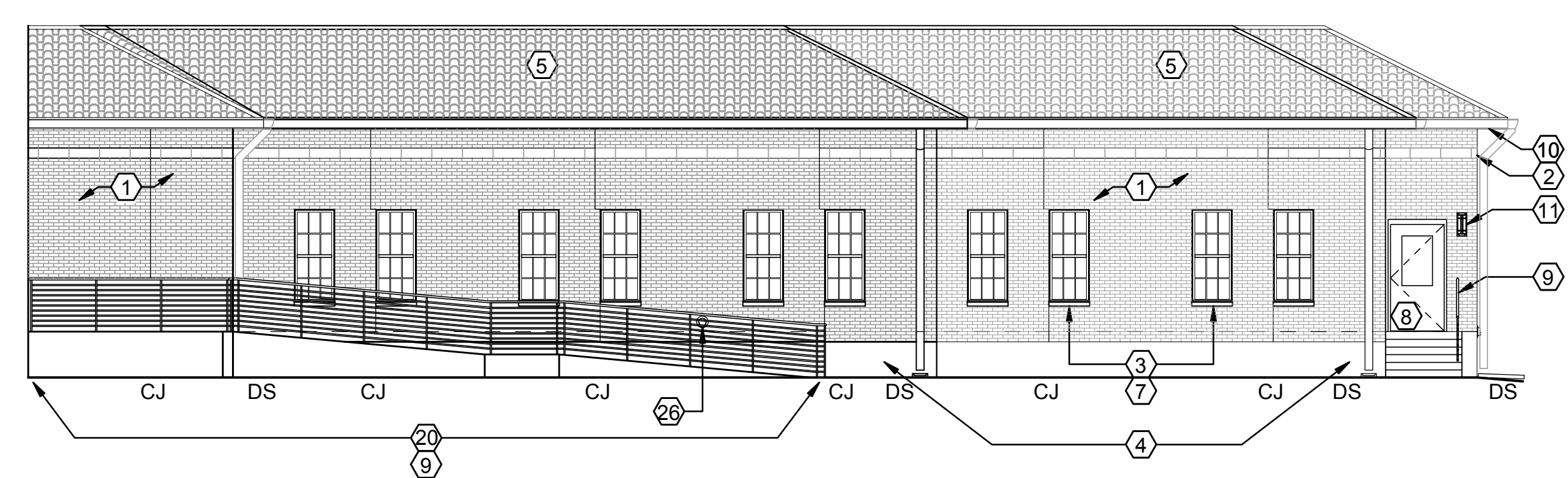
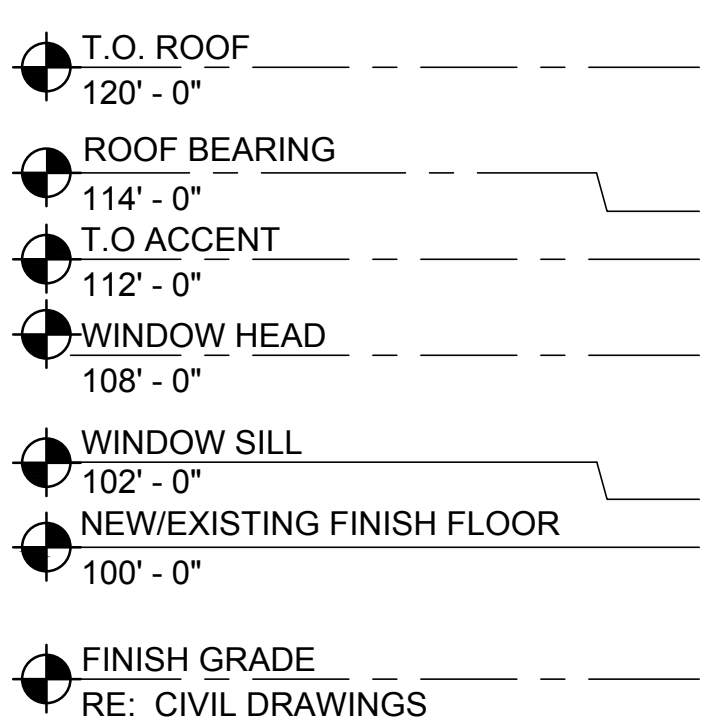
CONSTRUCTION DOCUMENTS

		CONSULTANT:		CONSULTANT:		ARCHITECT/ENGINEERS:		Drawing Title EXTERIOR ELEVATIONS		Project Title COMMUNITY LIVING CENTER		Project Number 442-12-357		Office of Construction and Facilities Management	
						<div><div>15031 SOUTH PINE BLVD SUITE 200 PARKER, COLORADO 80138 PH: 303-841-9922 WWW.AES-GFP.COM</div></div>				Building Number COWBOY					
RFI #5		21 APRIL 2017						Approved: Project Director		Location CHEYENNE, WYOMING		Drawing Number			
RFI #4		12 APRIL 2017						SYLVIE RUPP - CFM DIRECTOR				AE201			
RFI #3		31 MARCH 2017						FACILITIES/ENGINEERING		Date		Checked			
RFI #2		24 MARCH 2017						PHONE: 307-778-7550x7267		MARCH 2017		DHH			
REQUEST FOR INFORMATION #1 (RFI #1)		16 MARCH 2017						FAX: 307-287-9725		Drawn		JTB			
Revisions:		Date										Dwg. of		 Department of Veterans Affairs	

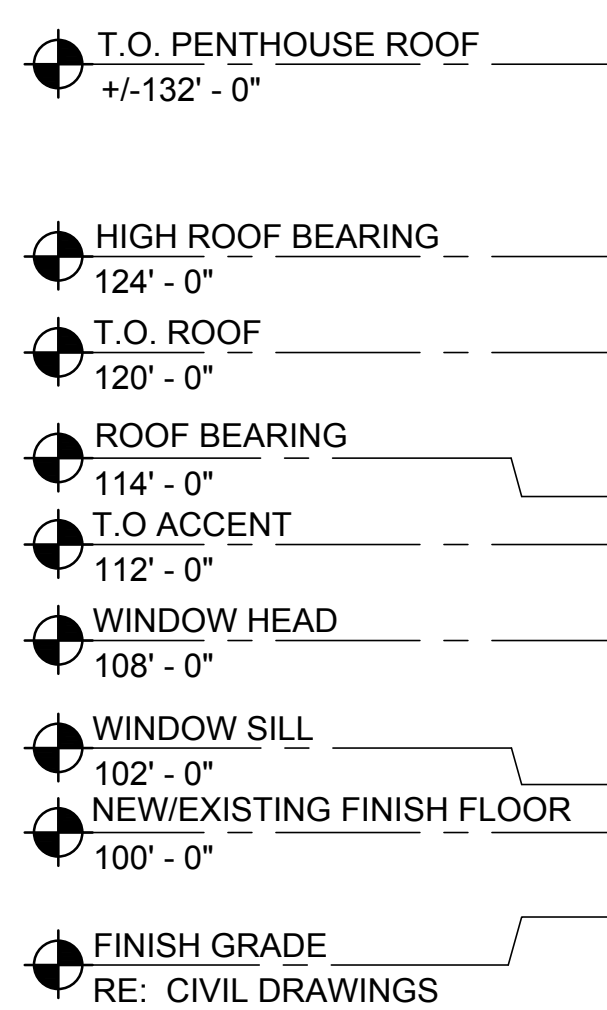
three inches = one foot
one and one half inches = one foot
one inch = one foot
three quarters inch = one foot
one half inch = one foot
one quarter inch = one foot
one eighth inch = one foot
one eighth inch = one foot



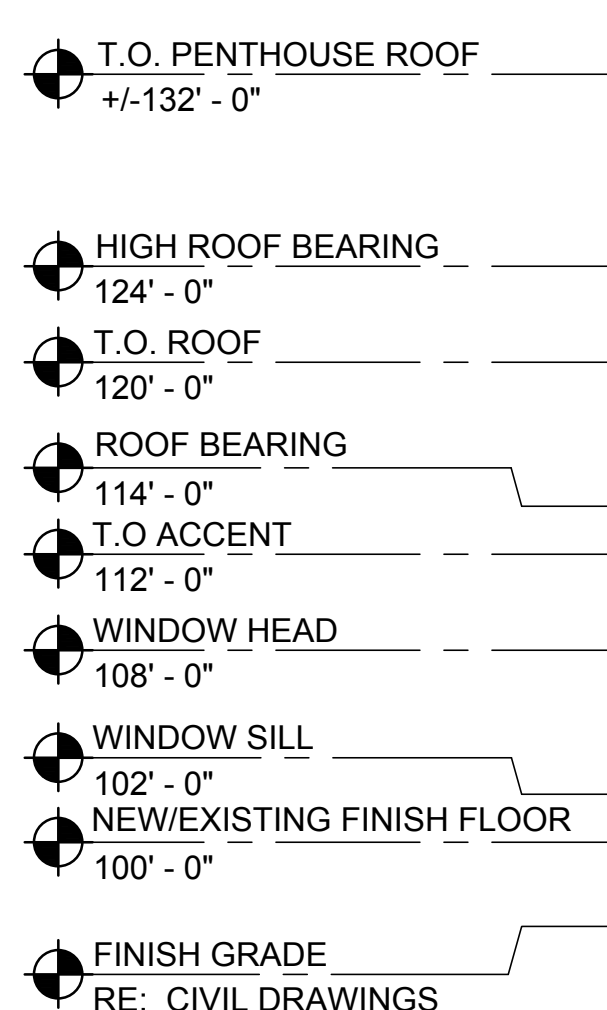
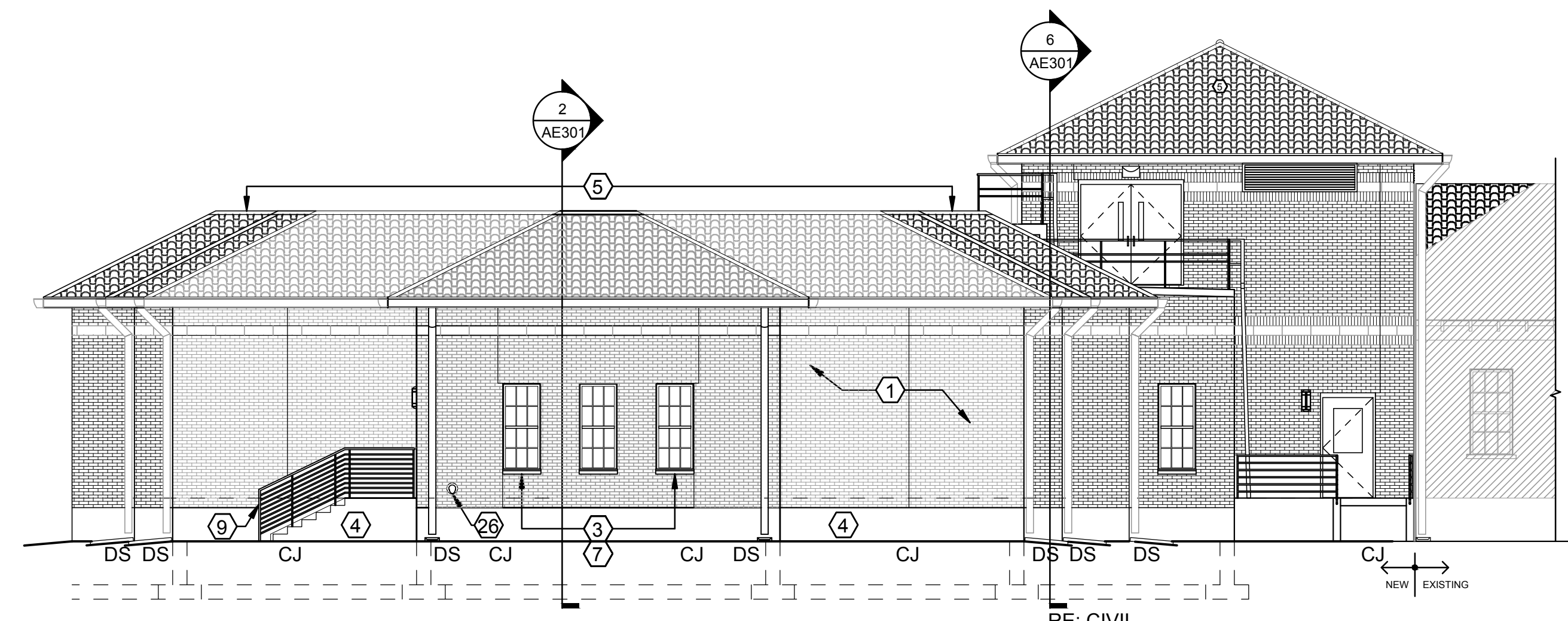
1 EAST ELEVATION AT SOUTH WING
1/8" = 1'-0"



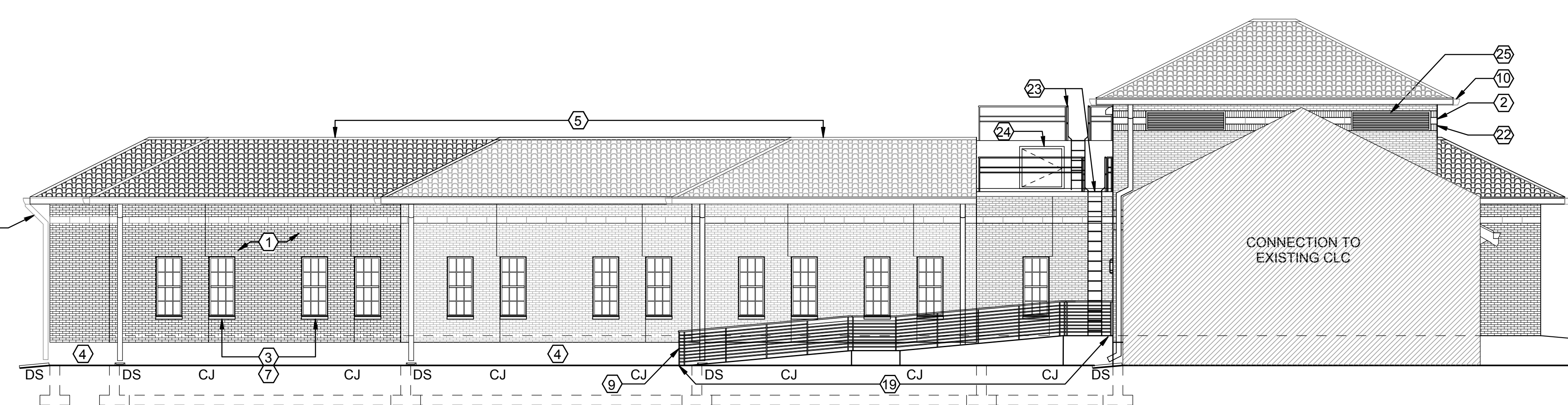
2 SOUTH ELEVATION AT EAST WING
1/8" = 1'-0"



3 EAST ELEVATION
1/8" = 1'-0"



4 NORTH ELEVATION AT EAST WING
1/8" = 1'-0"



ADJUSTMENT TO SEVERAL CONTROL JOINTS (CJ)

GENERAL NOTES

- EXTERIOR FINISHES SHALL MATCH EXISTING CAMPUS / BUILDING STANDARD MATERIAL FINISHES AND COLORS, TYP UNO.
- EXISTING BUILDING DRAWING SHOWN FOR REFERENCE ONLY, AND MAY NOT BE TRUE TO SCALE. FIELD VERIFY EXISTING CONDITIONS.
- ALL KEYNOTES ARE NOT APPLICABLE TO EACH ELEVATION

KEYNOTES

- FACE BRICK CLADDING TO MATCH EXISTING COLOR, TEXTURE AND BOND PATTERN, TYP UNO.
- ROCKED TEXTURE "ARRISCRAFT RENAISSANCE STONE" MASONRY ACCENT COURSE, MATCH EXISTING ORIGINAL ACCENT COURSING.
- ROCKED TEXTURE "ARRISCRAFT RENAISSANCE STONE" MASONRY SILL, MATCH EXISTING ORIGINAL SILL COLOR.
- ARCHITECTURAL CONCRETE PLINTH WITH CAST/STAMPED STONE FACE PATTERN TO MATCH EXISTING ORIGINAL STONE PLINTH COURSING.
- CLAY TILE MANSARD ROOF TO MATCH EXISTING CAMPUS STANDARD:
"LUDOWICI 18-3/8 INCH LONG STRAIGHT BARREL MISSION".
- ALUMINUM FRAME DOOR ENTRANCE AND STOREFRONT.
- ALUMINUM FRAME WINDOW WITH BETWEEN GLASS MUNTIN GRIDS, TYP UNO.
- INSULATED HOLLOW METAL DOOR AND HOLLOW METAL FRAME, PAINT.
- GALVANIZED STEEL GUARDHANDRAILS, PAINT.
- PRE-FINISHED METAL GUTTERS AND DOWNSPOUTS. PROVIDE CONCRETE SPLASH BLOCKS AT FINISH GRADE AREAS.
- EXTERIOR LIGHTING, RE: ELECTRICAL DRAWINGS.
- BASEMENT MECHANICAL/ELECTRICAL AREAS.
- EXISTING FACE BRICK CLADDING AND LIMESTONE ACCENT COURSE.
- EXISTING CLAY TILE ROOF.
- OVER-FRAME HIP AREA OF EXISTING ROOF TO EXTEND RIDGE LINE TO NEW STRUCTURE. REUSE EXISTING CLAY TILE TO GREATEST EXTENT POSSIBLE. IF ADDITIONAL CLAY TILE IS REQUIRED, BLEND COLORS TO ACHIEVE HARMONIOUS COLOR WITHOUT BLOTCHES, HOT SPOTS OR PATTERNS.
- DOWNSPOUT TO ROOF BELOW.
- ENTRANCE CANOPY WITH CLAY TILE ROOF.
- RAMP AT WEST MAIN ENTRY AREA TO "CIRCLE OF FLAGS," PROVIDE GUARD/HAND RAILS. PROVIDE 1:20 SLOPE PER VA REQUIREMENTS, RE: CIVIL DRAWINGS.
- RAMP AT EAST ENTRY AREA TO SMOKING AREA. PROVIDE GUARD/HAND RAILS. PROVIDE 1:20 SLOPE PER VA REQUIREMENTS, RE: CIVIL DRAWINGS.
- RAMP AT SOUTH EAST CORRIDOR EXIT TO BASEMENT ACCESS AREA. PROVIDE GUARD/HAND RAILS. PROVIDE 1:20 SLOPE PER VA REQUIREMENTS, RE: CIVIL DRAWINGS.
- 2 INCH BUILDING EXPANSION JOINT, USE "EMSEAL: COLORSEAL SYSTEM," OR EQUAL. COLOR SHALL MATCH ADJACENT BRICK VENEER.
- FACE BRICK ACCENT COURSING TO MATCH EXISTING FACE BRICK.
- ROOF ACCESS LADDER.
- ATTIC ACCESS DOOR.
- METAL LOUVERS TO MATCH METAL TRIM. RE: MECHANICAL DRAWINGS.
- ROOF OVERFLOW DRAIN NOZZEL.
- ARRISCRAFT BUILDING STONE WAINSCOT WITH ARRISCRAFT WATERTABLE UNIT COURSING.

EXTERIOR FINISH LEGEND

FIELD BRICK VENEER CLADDING:
FACE BRICK TO MATCH EXISTING CAMPUS STANDARD COLOR, TEXTURE AND BOND COURSING.

HORIZONTAL CAST STONE ACCENT COURSE:
ARRISCRAFT RENAISSANCE FULL BED, ROCKED TEXTURE, HEIGHT AND COLOR TO MATCH EXISTING LIMESTONE COURSE.

CAST STONE WINDOW SILLS:
ARRISCRAFT RENAISSANCE SILL UNITS, FULL BED, ROCKED VERTICAL FACE, 4 INCH NOMINAL HEIGHT, COLOR TO MATCH EXISTING LIMESTONE ELEMENTS.

ENTRY/PENTHOUSE WAINSCOT:
ARRISCRAFT BUILDING STONE: CITADEL, TUMBLED, 4-UNIT BOND, NOMINAL SIZES: LENGTHS RANDOM, 4 INCH BED, 2.5 / 5.5 AND 8 INCHES HIGH, COLOR TO MATCH EXISTING LIMESTONE ELEMENTS.

ENTRY/PENTHOUSE ACCENT COURSING:
FACE BRICK SOLDIER COURSE ABOVE AND BELOW CAST STONE ACCENT COURSE.

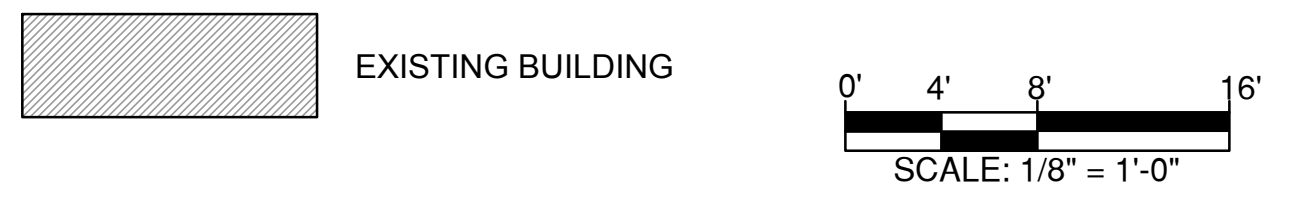
CAST CONCRETE PLINTH: COLOR TO MATCH EXISTING LIMESTONE ELEMENTS.

DOORS / DOOR FRAMES, WINDOW FRAMES: CHAMPAGNE

GUARD/HANDRAILS, GUTTERS/DOWNSPOUTS: CHAMPAGNE

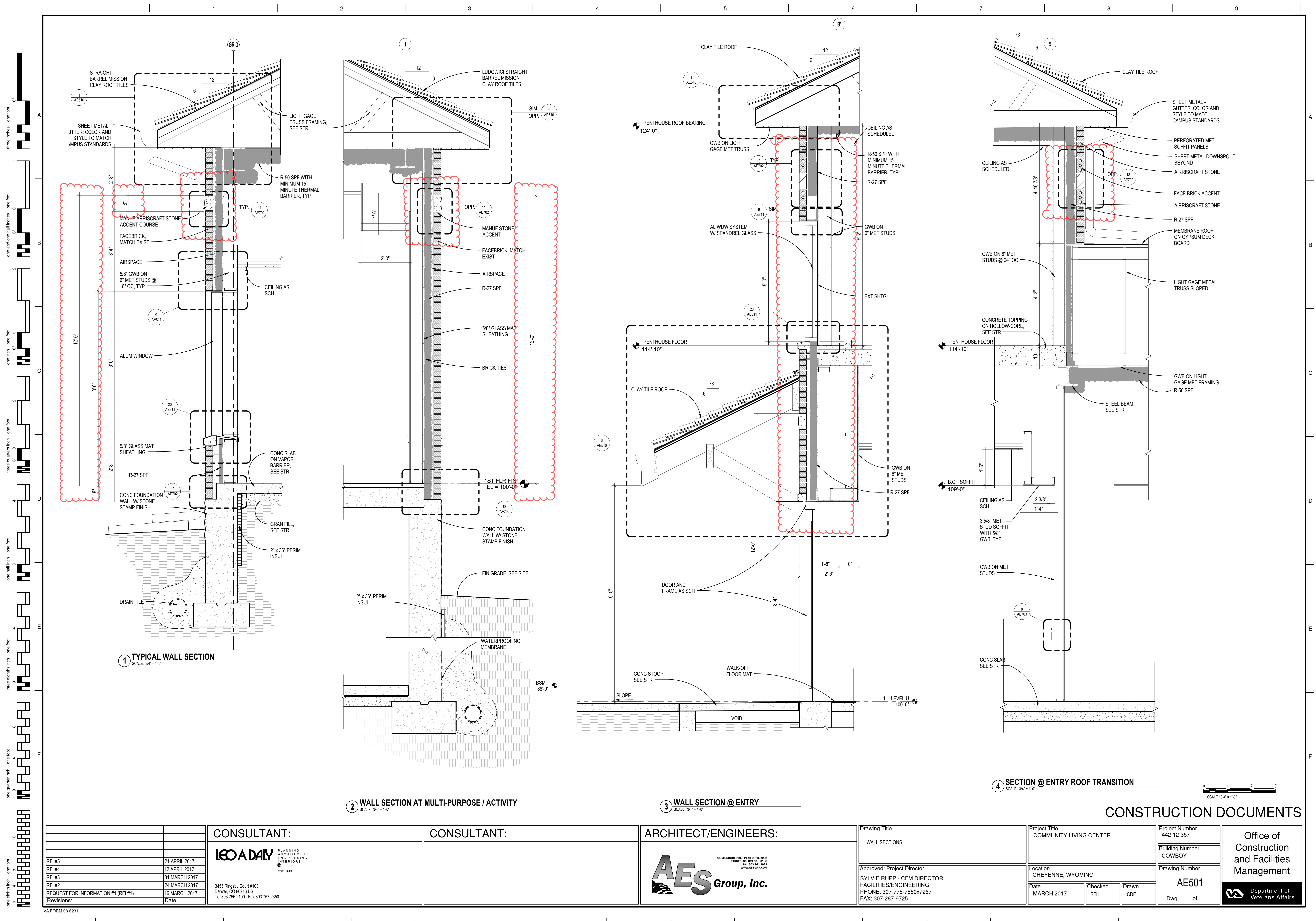
MISCELLANEOUS METAL TRIM: CHAMPAGNE

GLAZING: CLEAR



CONSTRUCTION DOCUMENTS

CONSULTANT:		CONSULTANT:		ARCHITECT/ENGINEERS:		Drawing Title EXTERIOR ELEVATIONS		Project Title COMMUNITY LIVING CENTER		Project Number 442-12-357		Office of Construction and Facilities Management Department of Veterans Affairs
				 11011 SOUTH PINES PEAK DRIVE #202 PARADISE, COLORADO 80638 PH: 303.643.3928 WWW.AES-GRP.COM		Approved: Project Director SYLVIE RUPP - CFM DIRECTOR FACILITIES/ENGINEERING PHONE: 307-778-7550x7267 FAX: 307-287-9725		Location CHEYENNE, WYOMING		Building Number COWBOY		
RFI #5 21 APRIL 2017		RFI #4 12 APRIL 2017				Date MARCH 2017		Checked DHH		Drawn JTB		
RFI #3 31 MARCH 2017		RFI #2 24 MARCH 2017								Dwg. of		
REQUEST FOR INFORMATION #1 (RFI #1) 16 MARCH 2017												
Revisions: Date												



RFI #5	21 APRIL 2017
RFI #4	12 APRIL 2017
RFI #3	31 MARCH 2017
RFI #2	24 MARCH 2017
REQUEST FOR INFORMATION #1 (RFI #1)	16 MARCH 2017
Revisions:	Date

CONSULTANT:

LEO A DAILY

PLANNING
ARCHITECTURE
ENGINEERING
INTERIORS

EST. 1915

3455 Ringsby Court #103
Denver, CO 80216 US
Tel 303.756.2100 Fax 303.757.2350

CONSULTANT:

ARCHITECT/ENGINEERS:

AES Group, Inc.

11011 SOUTH PINE PEAK DRIVE #202
PARADISE, COLORADO 80642
PH: 303.643.3923
WWW.AES-GRP.COM

Drawing Title
WALL SECTIONS

Approved: Project Director
SYLVIE RUPP - CFM DIRECTOR
FACILITIES/ENGINEERING
PHONE: 307-778-7550x7267
FAX: 307-287-9725

Project Title
COMMUNITY LIVING CENTER

Project Number
442-12-357

Building Number
COWBOY

Location
CHEYENNE, WYOMING

Date
MARCH 2017

Checked
BFH

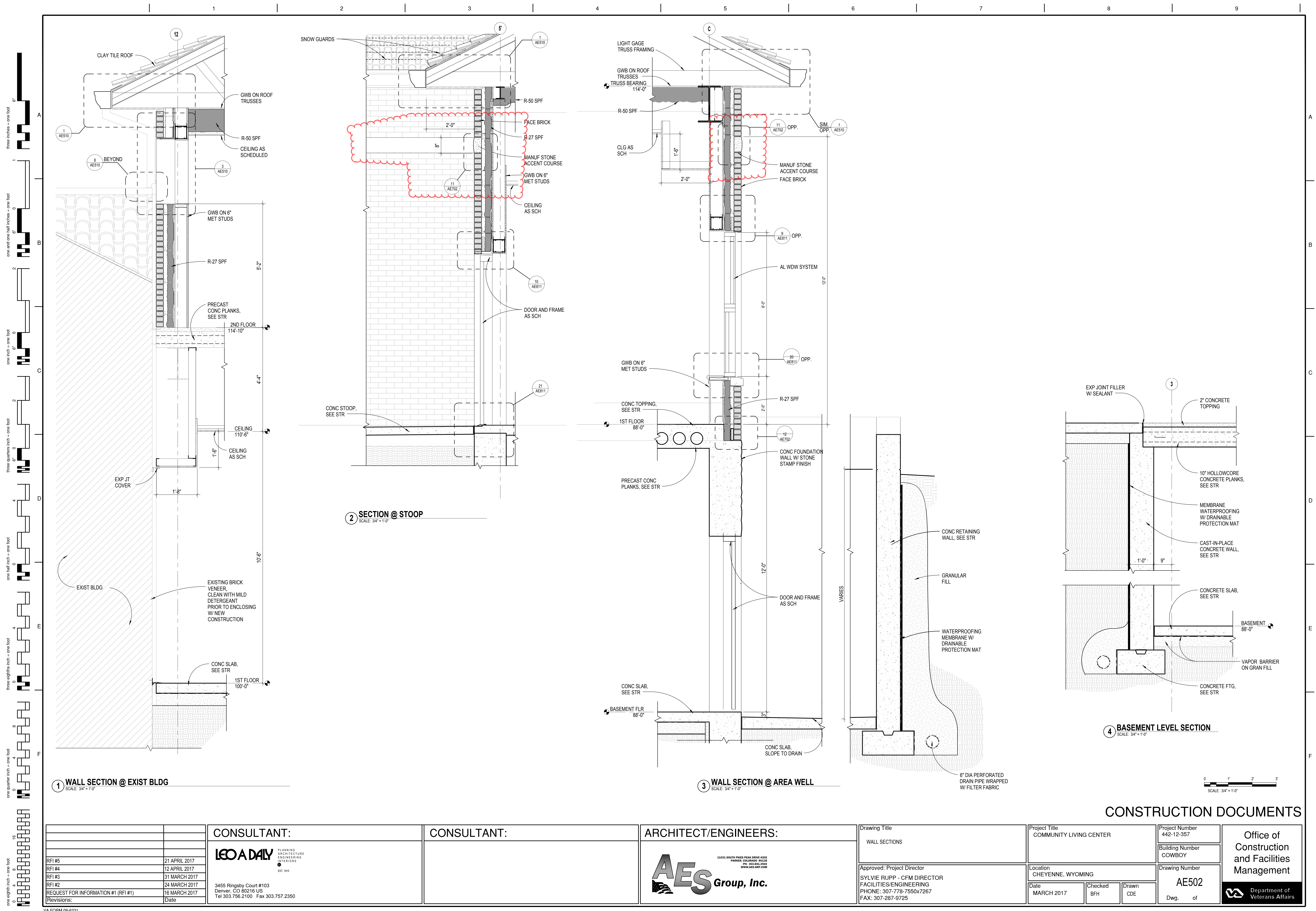
Drawn
CDE

Drawing Number
AE501

Dwg. of

Office of
Construction
and Facilities
Management

Department of
Veterans Affairs



1 WALL SECTION @ EXIST BLDG
SCALE: 3/4" = 1'-0"

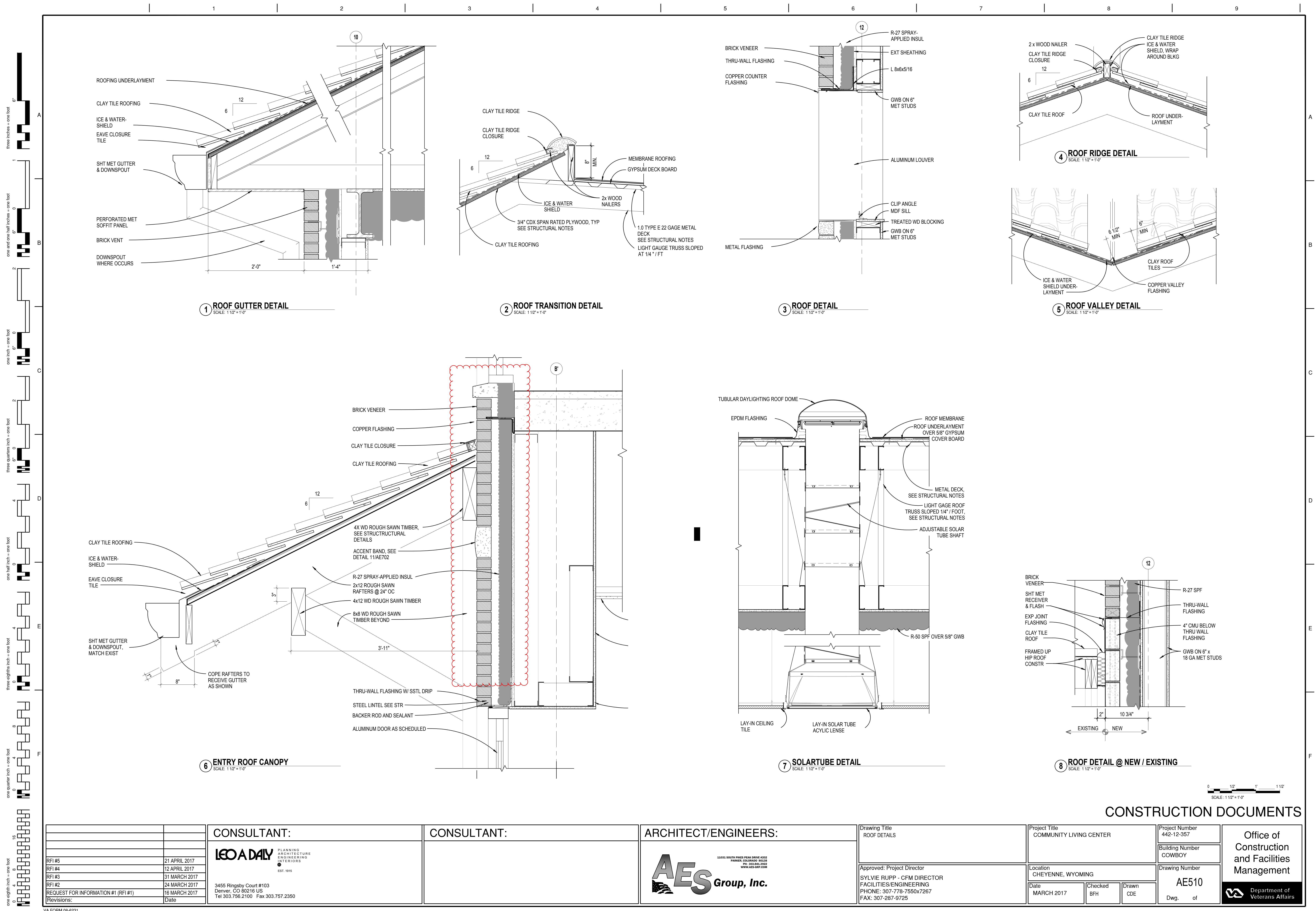
2 SECTION @ STOOP
SCALE: 3/4" = 1'-0"

3 WALL SECTION @ AREA WELL
SCALE: 3/4" = 1'-0"

4 BASEMENT LEVEL SECTION
SCALE: 3/4" = 1'-0"

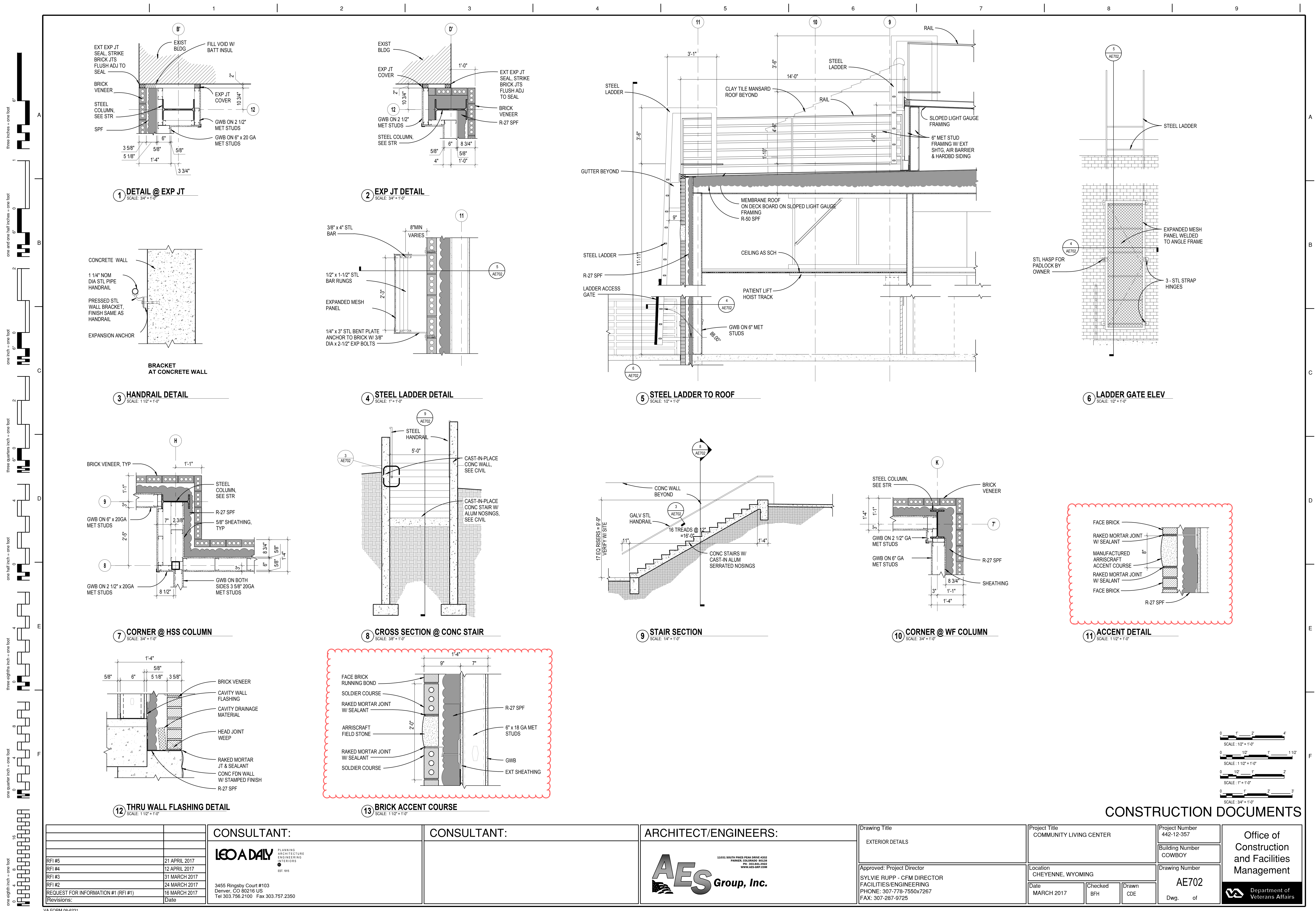
CONSTRUCTION DOCUMENTS

		<div>CONSULTANT:</div> <div><div><div>LEO A DAILY</div><div>PLANNING ARCHITECTURE ENGINEERING INTERIORS</div><div>EST. 1919</div></div><div>3455 Ringsby Court #103 Denver, CO 80216 US Tel 303.756.2100 Fax 303.757.2350</div></div>	<div>CONSULTANT:</div>	<div>ARCHITECT/ENGINEERS:</div> <div><div><div>AES</div><div>Group, Inc.</div></div><div>11033 SOUTH PUEBLO PEAK DRIVE #202 PARKER, COLORADO 80130 PH: 303.941.3922 WWW.AES-GRP.COM</div></div>	<div>Drawing Title</div> <div>WALL SECTIONS</div>	<div>Project Title</div> <div>COMMUNITY LIVING CENTER</div>	<div>Project Number</div> <div>442-12-357</div>	<div>Office of Construction and Facilities Management</div> <div><div></div><div>Department of Veterans Affairs</div></div>					
<div>RFI #5</div> <div>21 APRIL 2017</div>	<div>RFI #4</div> <div>12 APRIL 2017</div>				<div>RFI #3</div> <div>31 MARCH 2017</div>	<div>RFI #2</div> <div>24 MARCH 2017</div>	<div>REQUEST FOR INFORMATION #1 (RFI #1)</div> <div>16 MARCH 2017</div>		<div>Revisions:</div> <div>Date</div>	<div>Building Number</div> <div>COWBOY</div>	<div>Drawing Number</div> <div>AE502</div>		
										<div>Date</div> <div>MARCH 2017</div>	<div>Checked</div> <div>BFH</div>	<div>Drawn</div> <div>CDE</div>	<div>Dwg. of</div>
										<div>Approved: Project Director</div> <div>SYLVIE RUPP - CFM DIRECTOR</div> <div>FACILITIES/ENGINEERING</div> <div>PHONE: 307-778-7550x7267</div> <div>FAX: 307-287-9725</div>	<div>Location</div> <div>CHEYENNE, WYOMING</div>		



CONSTRUCTION DOCUMENTS

<div>RFI #521 APRIL 2017</div> <div>RFI #412 APRIL 2017</div> <div>RFI #331 MARCH 2017</div> <div>RFI #224 MARCH 2017</div> <div>REQUEST FOR INFORMATION #1 (RFI #1)16 MARCH 2017</div> <div>Revisions:Date</div>	<div>CONSULTANT:</div> <div>LEO A DAILY</div> <div>PLANNINGARCHITECTUREENGINEERINGINTERIORS</div> <div>EST. 1915</div> <div>3455 Ringsby Court #103Denver, CO 80216 US</div> <div>Tel 303.756.2100 Fax 303.757.2350</div>	<div>CONSULTANT:</div>	<div>ARCHITECT/ENGINEERS:</div> <div>AES Group, Inc.</div> <div>11011 SOUTH PINES PEAK DRIVE #202PARADISE, COLORADO 80131</div> <div>PH: 303.843.3929</div> <div>WWW.AES-GRP.COM</div>	<div>Drawing Title</div> <div>ROOF DETAILS</div> <div>Approved: Project Director</div> <div>SYLVIE RUPP - CFM DIRECTOR</div> <div>FACILITIES/ENGINEERING</div> <div>PHONE: 307-778-7550x7267</div> <div>FAX: 307-287-9725</div>	<div>Project Title</div> <div>COMMUNITY LIVING CENTER</div> <div>Location</div> <div>CHEYENNE, WYOMING</div> <div>Date</div> <div>MARCH 2017</div> <div>Checked</div> <div>BFH</div> <div>Drawn</div> <div>CDE</div> <div>Project Number</div> <div>442-12-357</div> <div>Building Number</div> <div>COWBOY</div> <div>Drawing Number</div> <div>AE510</div> <div>Dwg. of</div>	<div>Office of</div> <div>Construction and Facilities</div> <div>Management</div> <div>Department of Veterans Affairs</div>
---	---	------------------------	--	---	---	---



CONSULTANT:

LEO A DAILY
PLANNING
ARCHITECTURE
ENGINEERING
INTERIORS
EST. 1916

3455 Ringsby Court #103
Denver, CO 80216 US
Tel 303.756.2100 Fax 303.757.2350

CONSULTANT:

ARCHITECT/ENGINEERS:

AES Group, Inc.
11011 SOUTH PINES PEAK DRIVE #202
PARADISE, COLORADO 80131
PH: 303.643.3922
WWW.AES-GRP.COM

Drawing Title

EXTERIOR DETAILS

Project Title

COMMUNITY LIVING CENTER

Project Number

442-12-357

Building Number

COWBOY

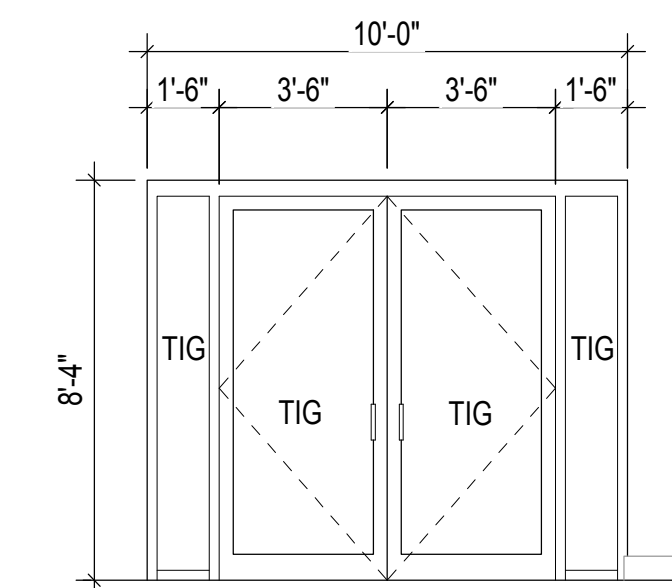
Drawing Number

AE702

Dwg. of

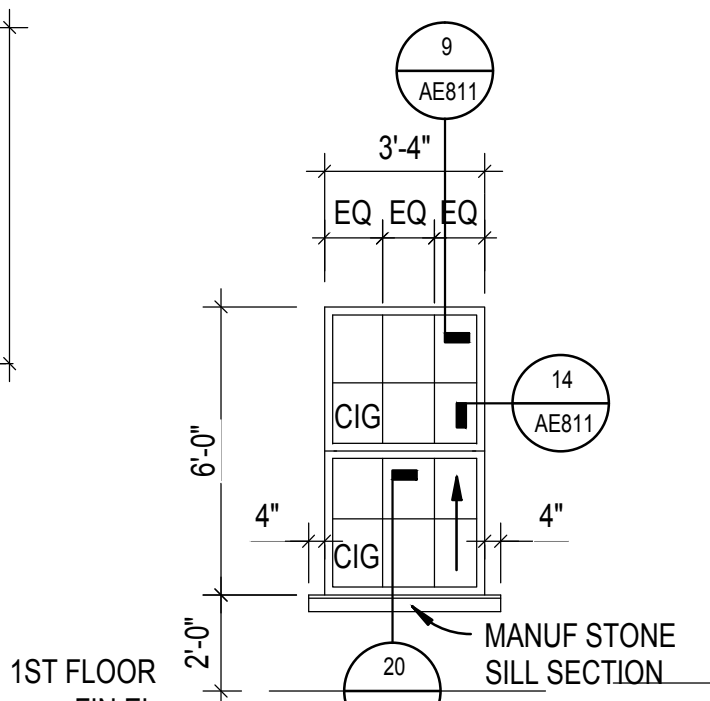
Office of
Construction
and Facilities
Management

Department of
Veterans Affairs



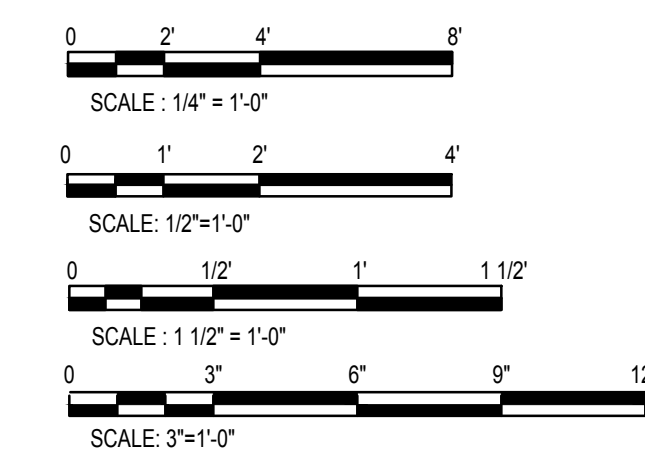
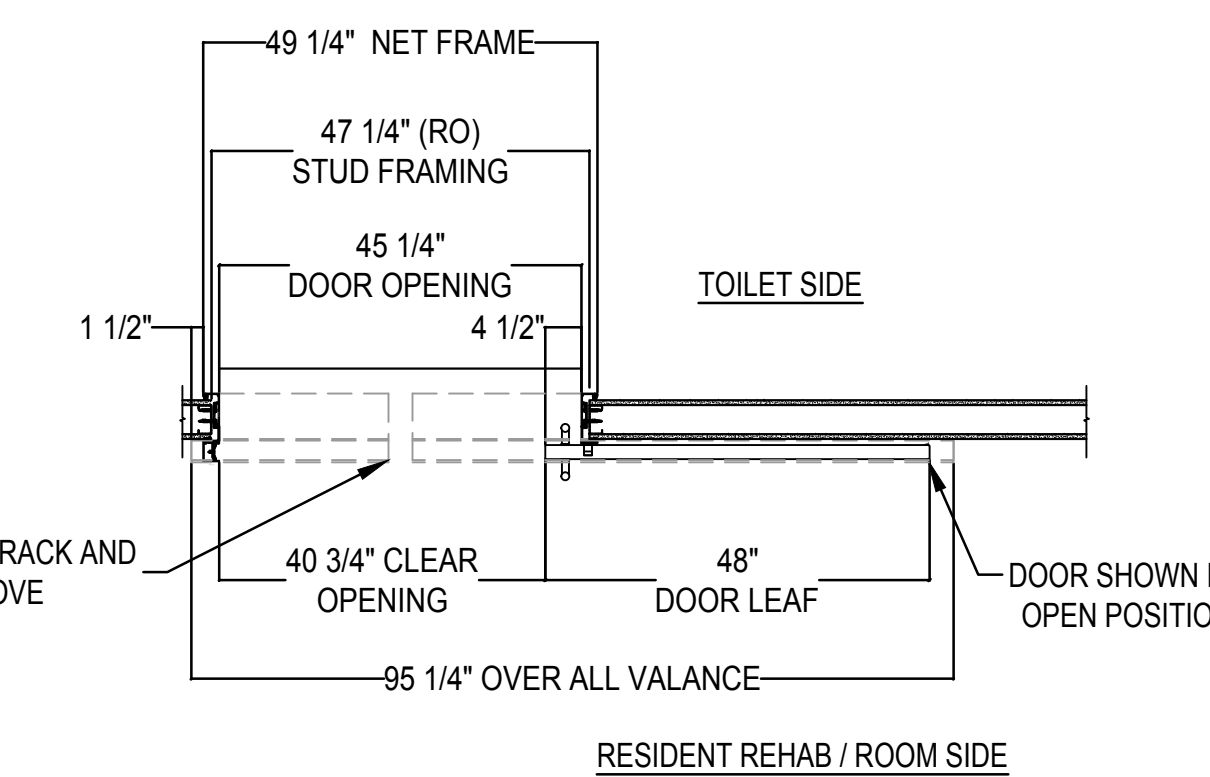
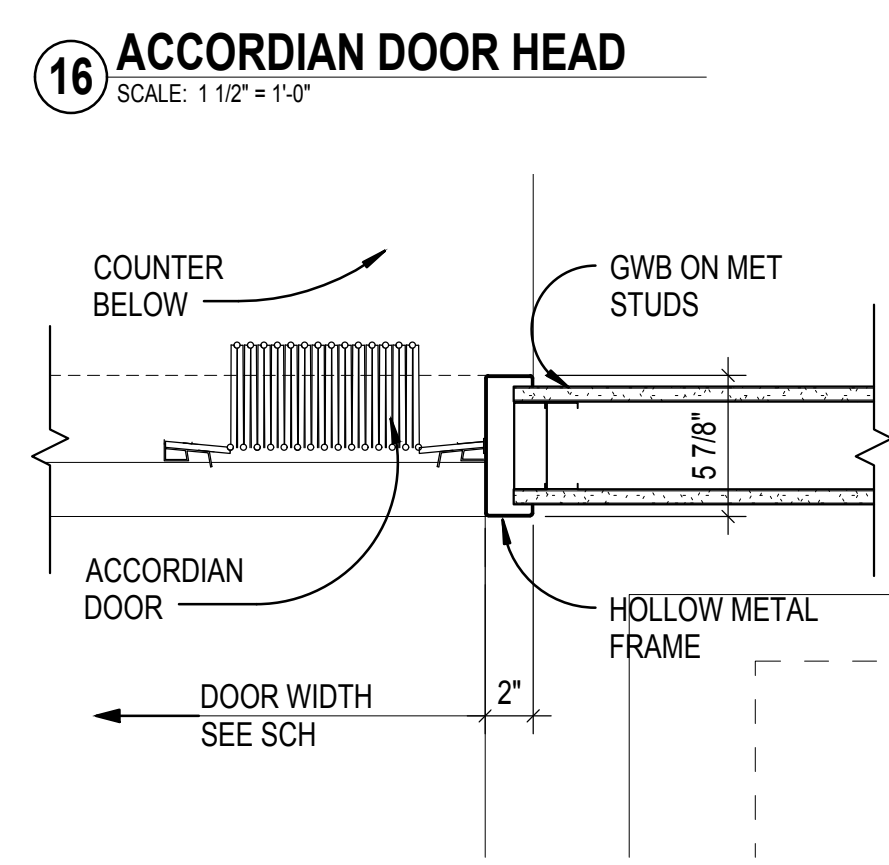
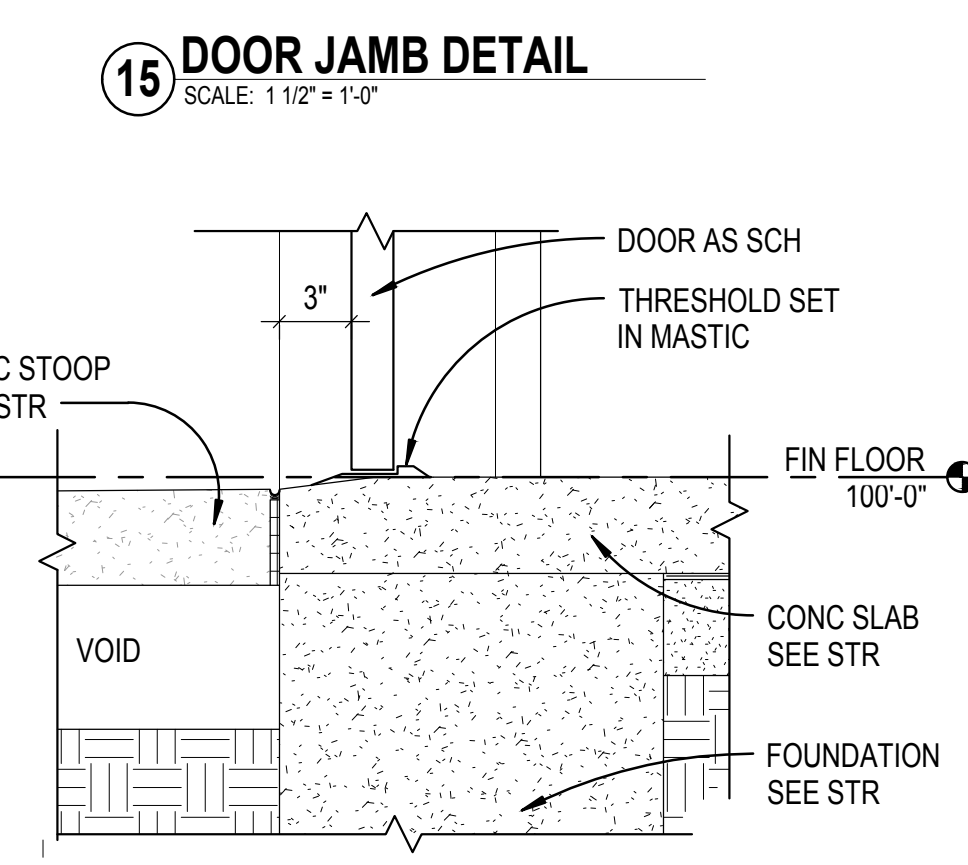
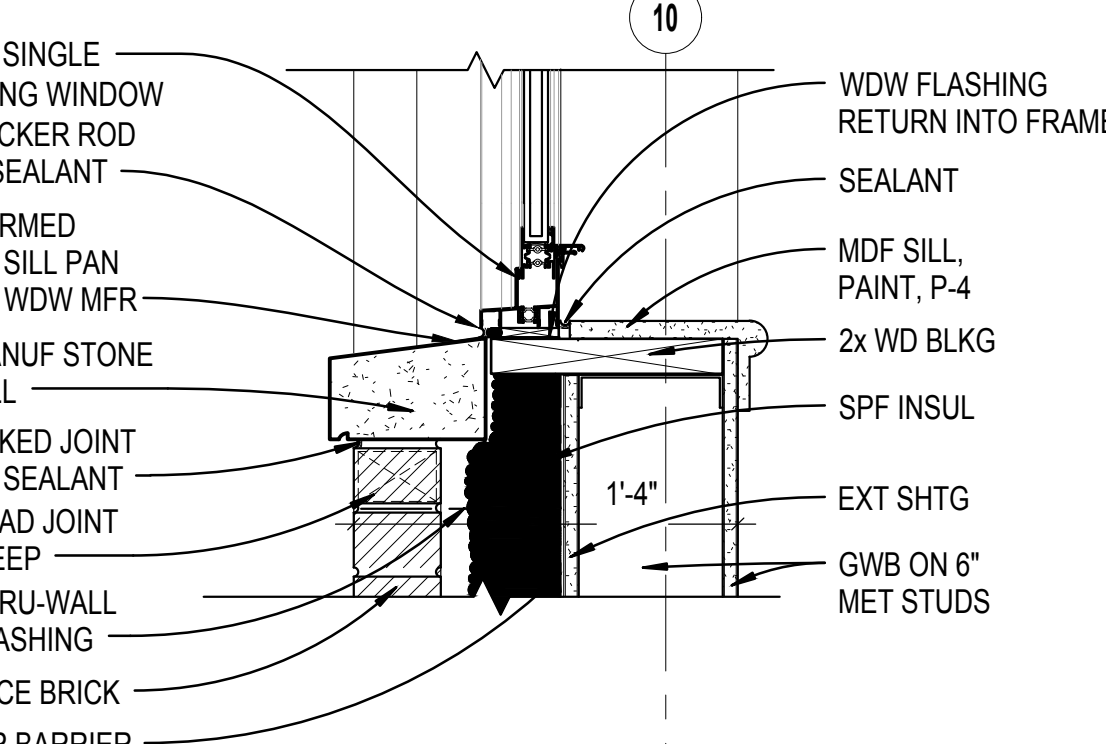
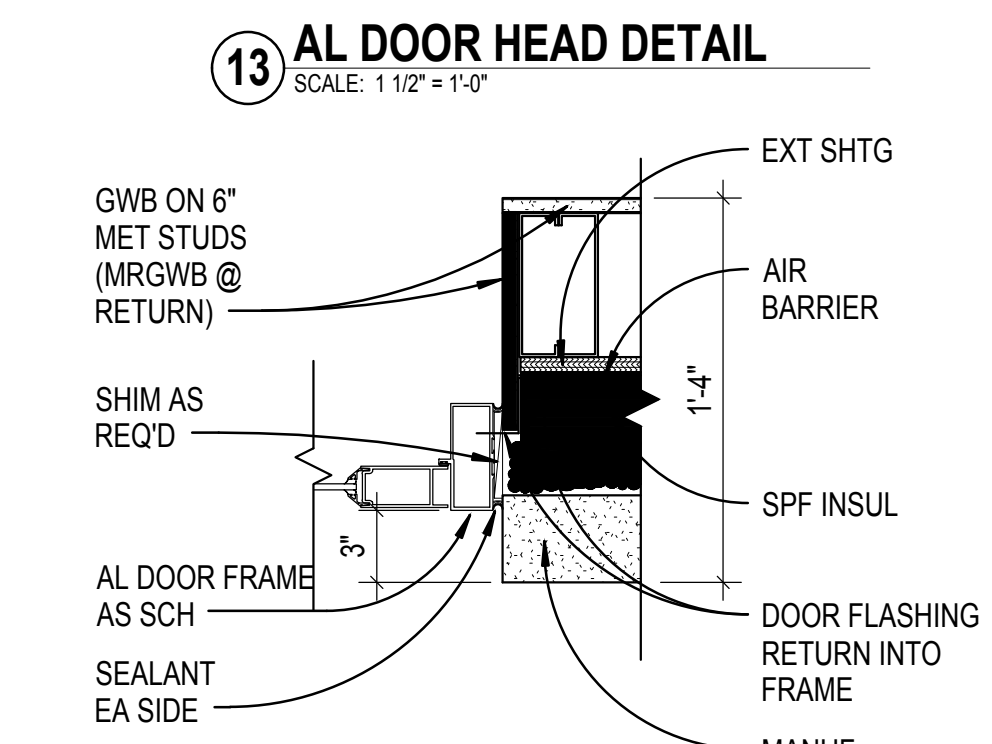
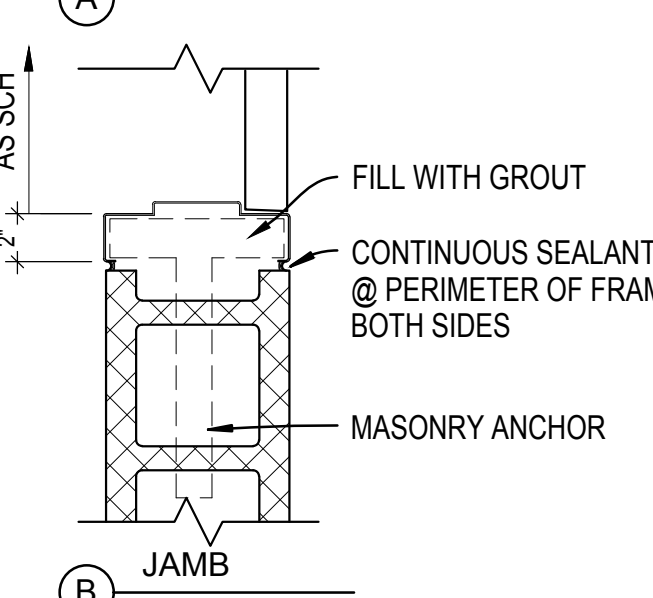
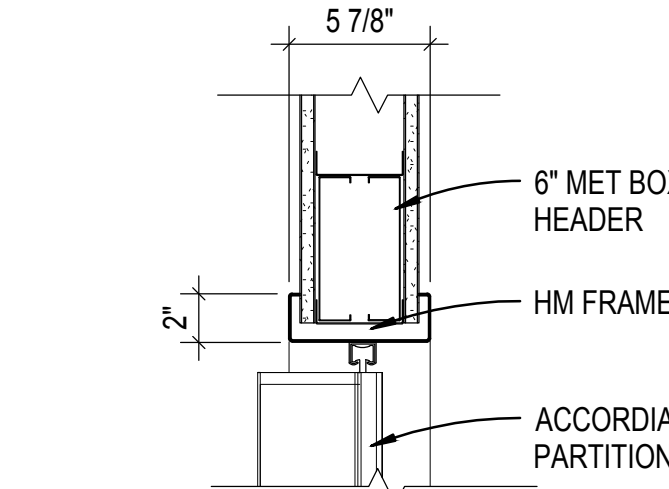
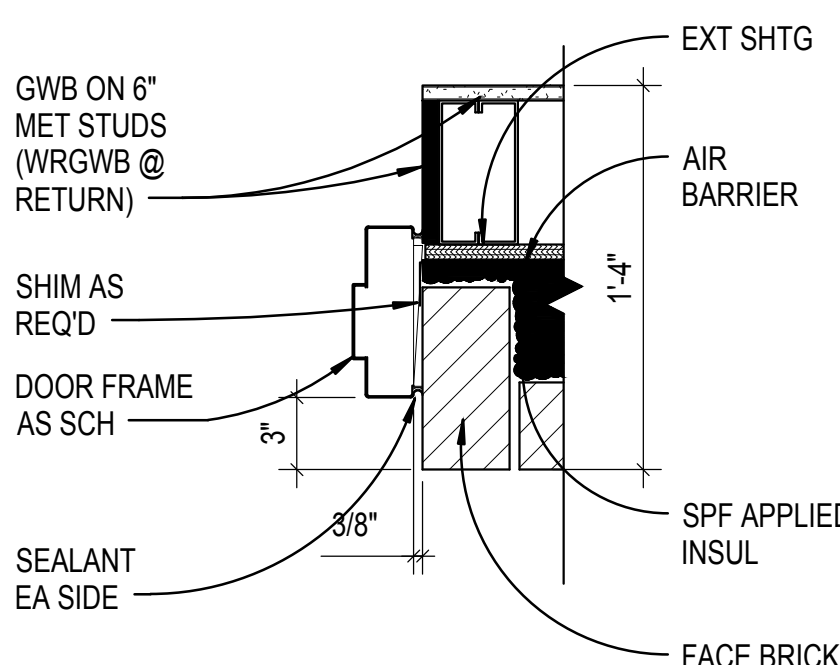
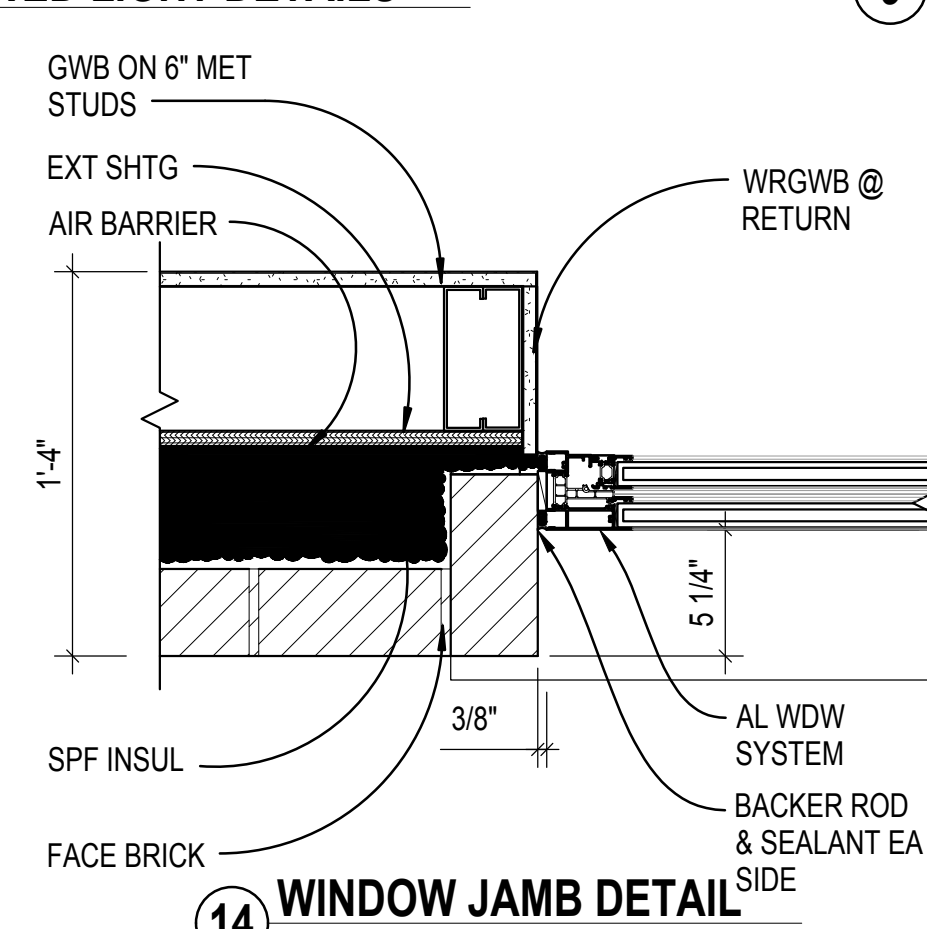
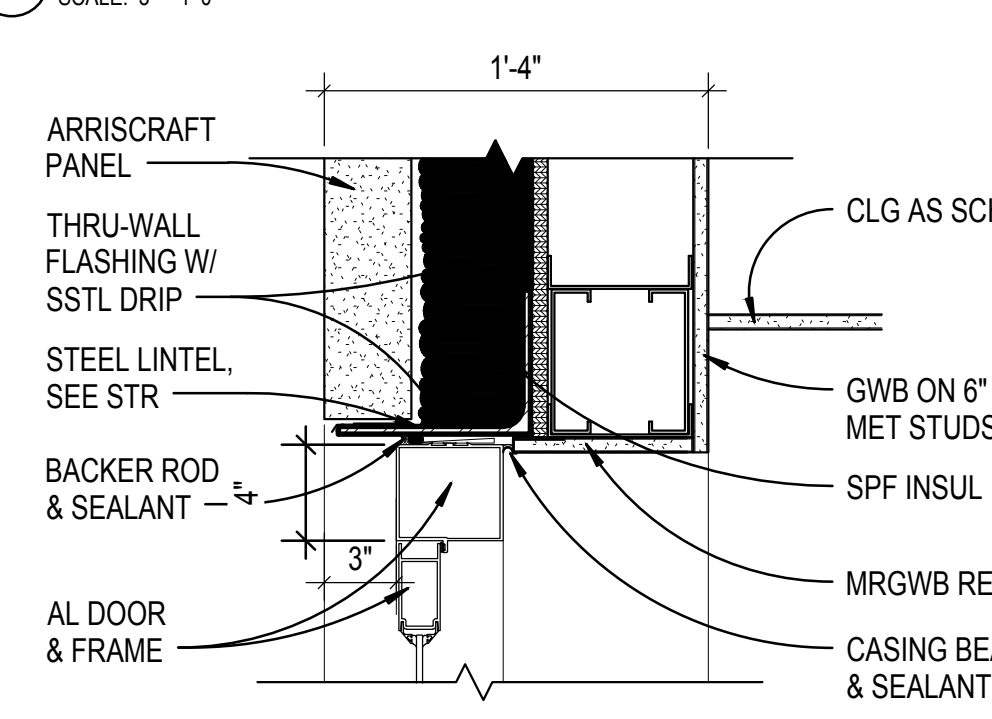
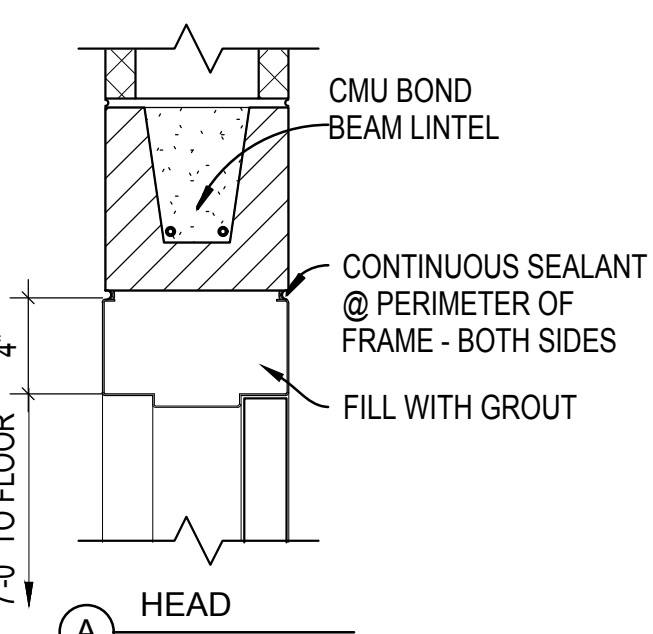
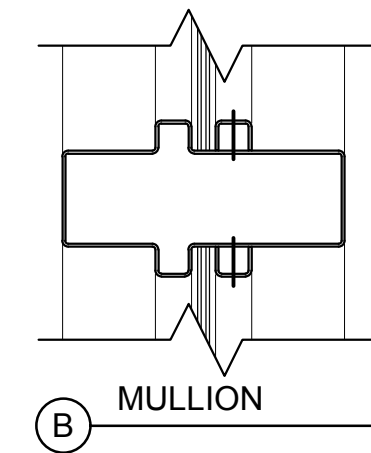
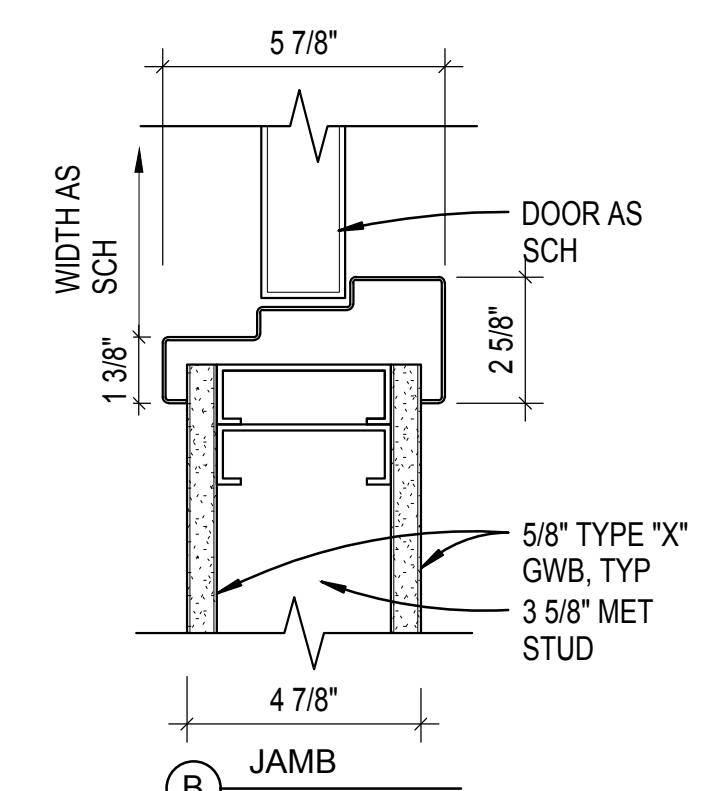
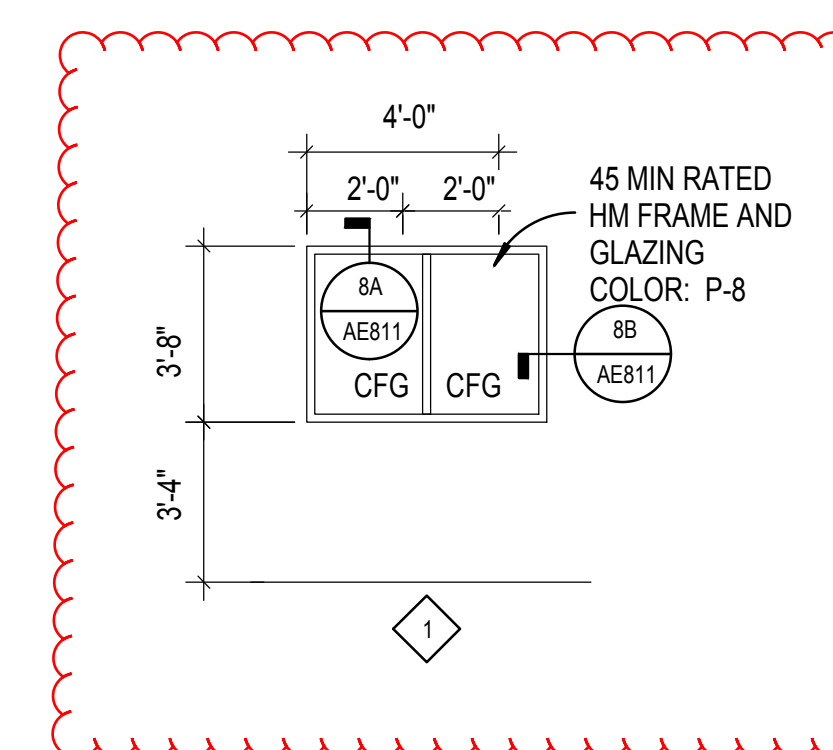
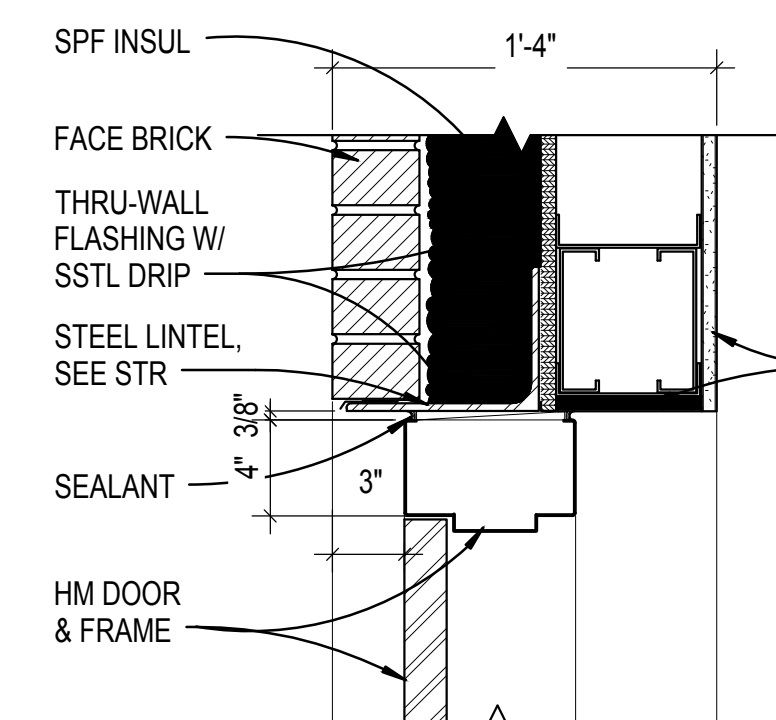
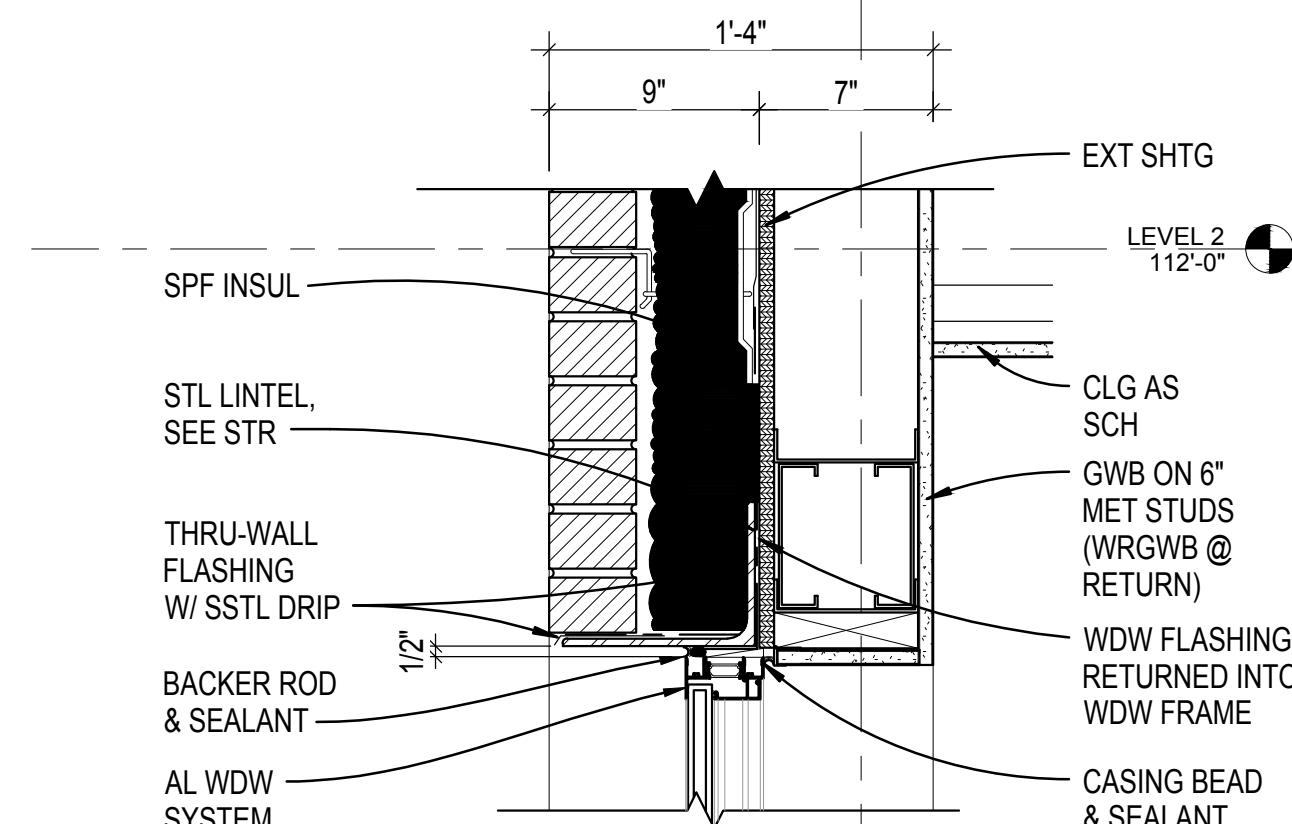
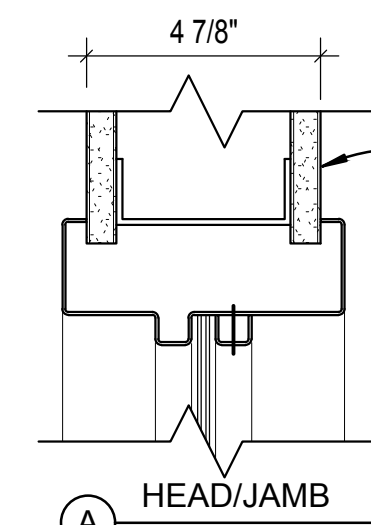
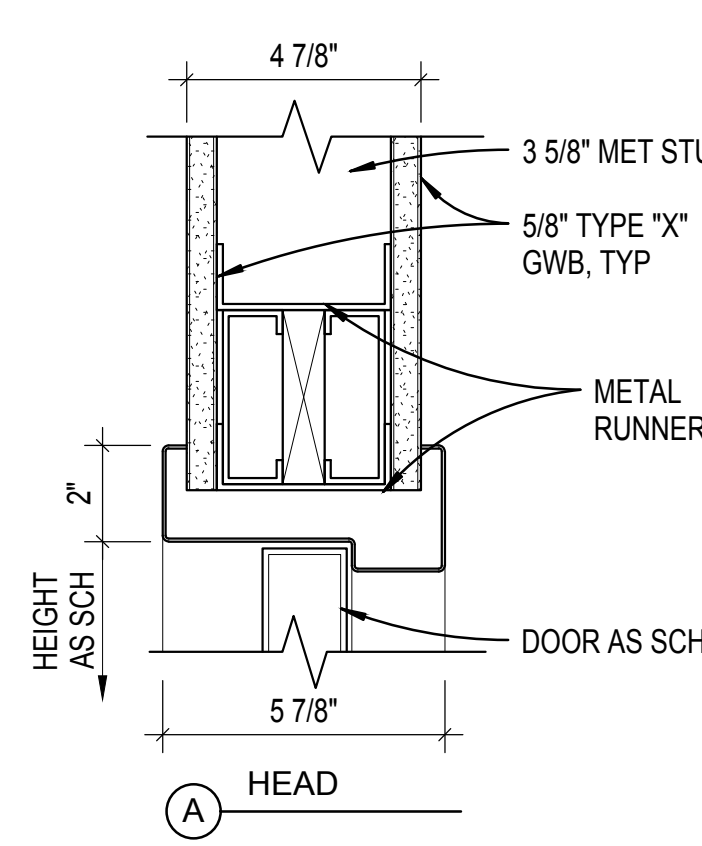
① FRAME TYPE @ ENTRY VESTIBULE

SCALE: NTS



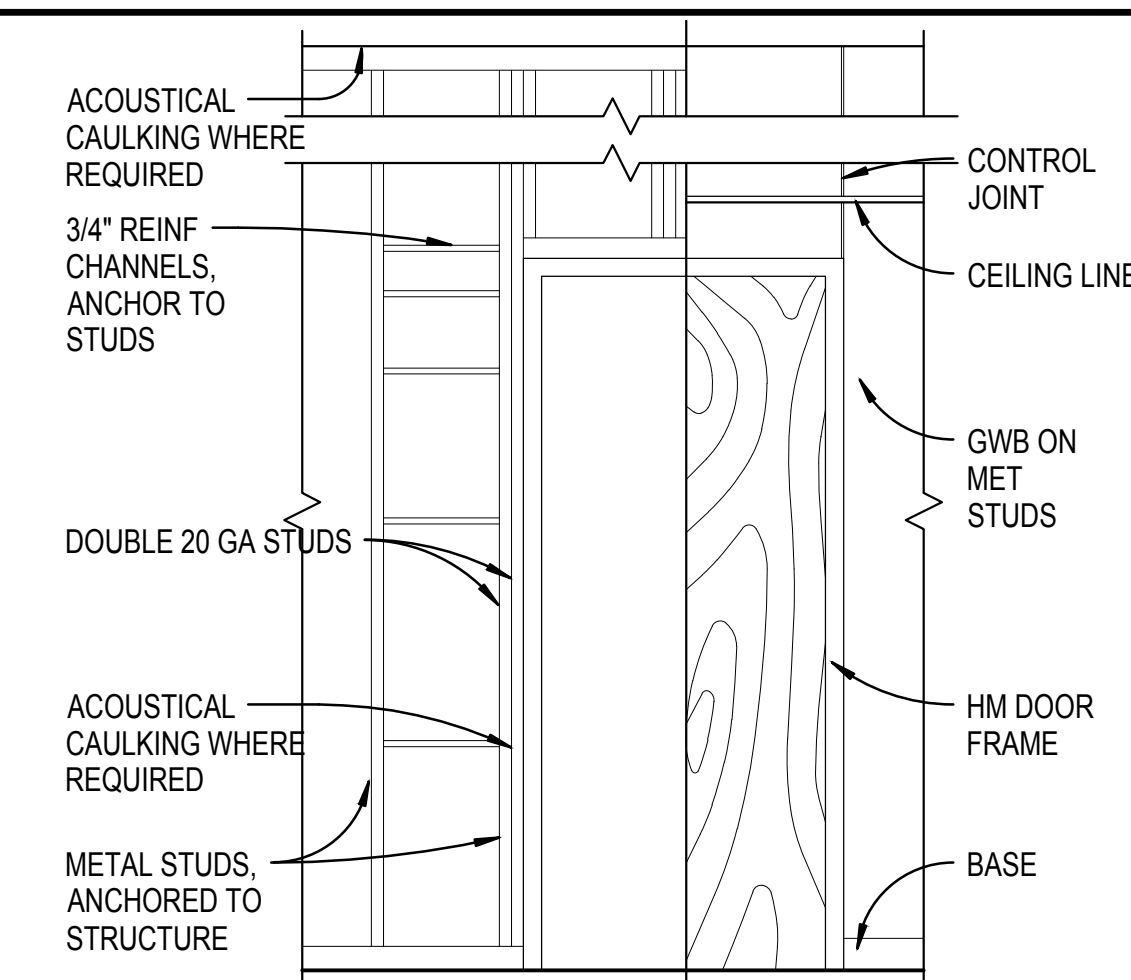
WINDOW TYPES

SCALE: 1/4" = 1'-0"



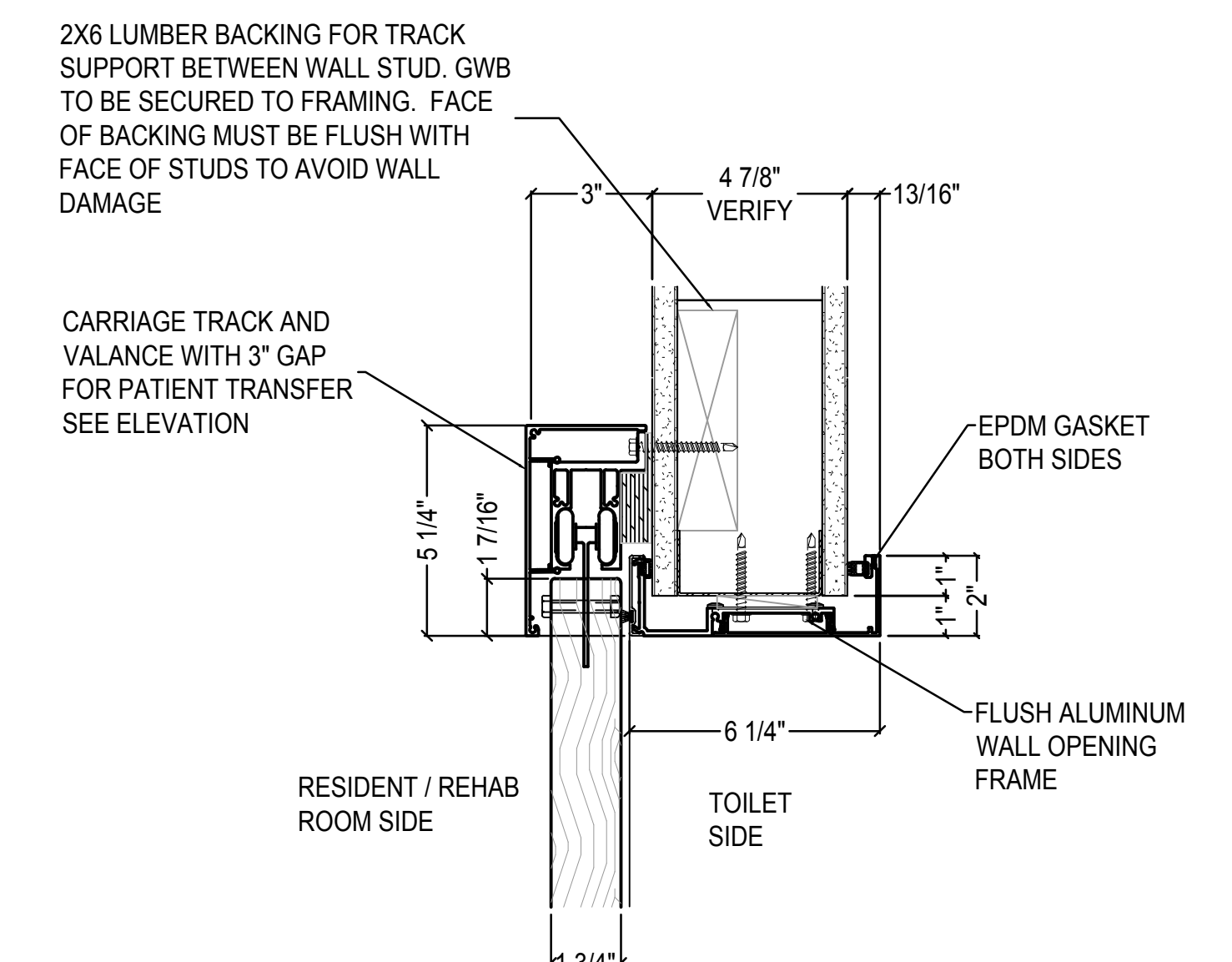
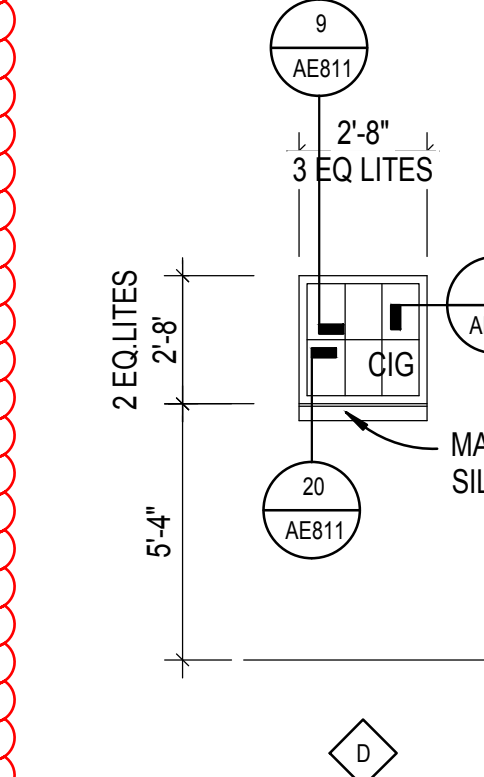
1. PROVIDE LABELS ON DOORS AND FRAMES WHERE SCHEDULED
2. INSTALL CONTINUOUS CAULKING AROUND METAL FRAMES UNLESS NOTED OTHERWISE
3. HOLLOW METAL FRAMES IN MASONRY WALLS SHALL BE FILLED WITH GROUT.
4. DOOR TYPES AND SIZES ARE SHOWN ON SHEET AE811.
5. AD SYSTEMS SHALL BE USED AS THE DESIGN BASIS FOR ALL BARN DOOR SYSTEMS FOR DOOR FRAME, HARDWARE, DOOR LEAF.
6. PROVIDE SAFETY GLAZING, TEMPERED INSULATED GLASS (TIG) AT EXTERIOR LOCATIONS, AS REQUIRED BY IBC SECTION 2406.

TIG = TEMPERED INSULATED GLASS
CFG = CLEAR FLOAT GLASS
CIG = CLEAR INSULATED GLASS



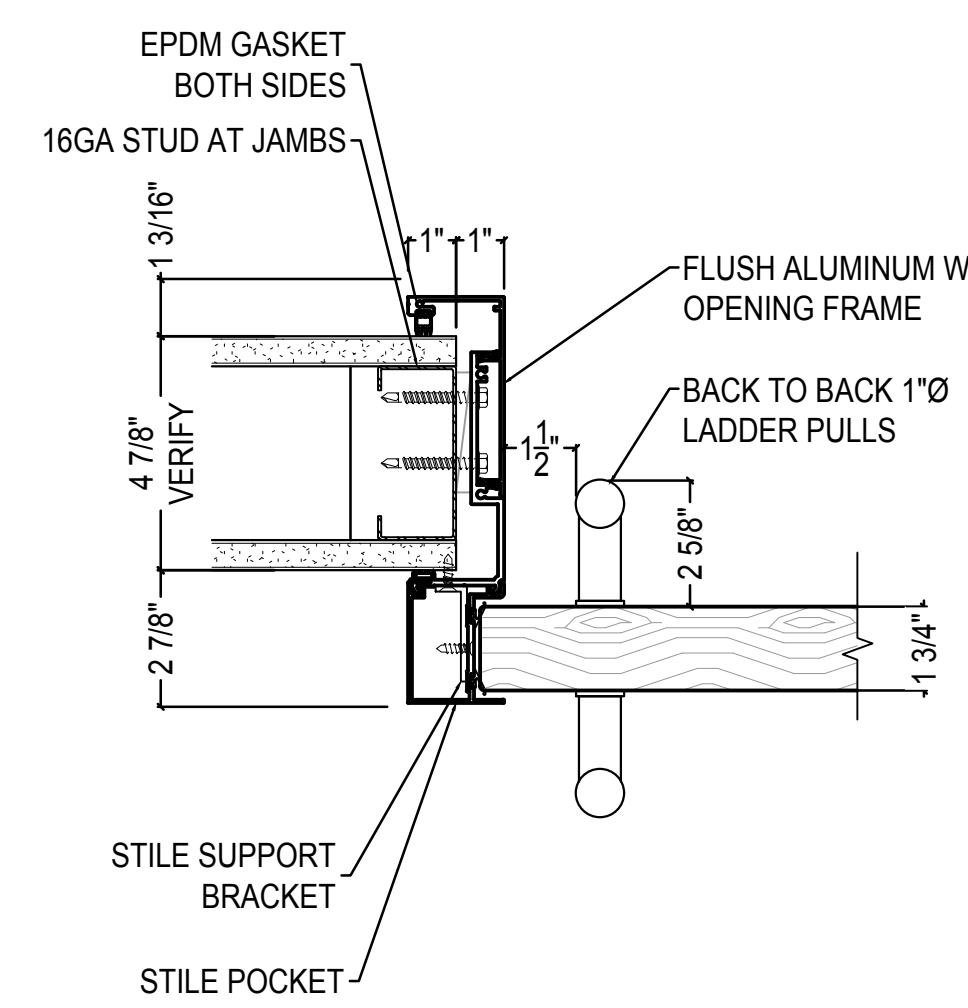
5 TYPICAL DOOR FRAMING

SCALE: 1 1/2" = 1'-0"



12 BARN DOOR HEAD DETAIL

SCALE: 3" = 1'-0"



17 BARN DOOR JAMB DETAIL

SCALE: 3" = 1'-0"

CONSTRUCTION DOCUMENTS

VA FORM 08-6231



GENERAL 1ST FLOOR LIGHTING NOTES

- 1. ILLUMINATION DESIGN IS CONSISTENT WITH ILLUMINATING ENGINEERING SOCIETY OF NORTH AMERICA, IESNA RP 28 (OR LATEST EDITION), RECOMMENDED PRACTICE FOR LIGHTING AND THE VISUAL ENVIRONMENT FOR SENIOR LIVING PER CLC DG 2011 PAGE 3-51 3.4.11
- 2. FLEXIBLE CONDUITS TO BE USED FOR FINAL CONNECTIONS TO RECESSED LIGHTING FIXTURES PER CLC DG 2011 PAGE 3-63 3.5.4-10
- 3. SHADED FIXTURES ARE TO BE WIRED TO THE CRITICAL EMERGENCY PANEL AS SHOWN. NO BATTERY OPERATED FIXTURES OR EMERGENCY BALLASTS REQUIRED UNLESS OTHERWISE NOTED.
- 4. REFER TO SHEET EL601 FOR FIXTURE SCHEDULE

1ST FLOOR LIGHTING KEYNOTES

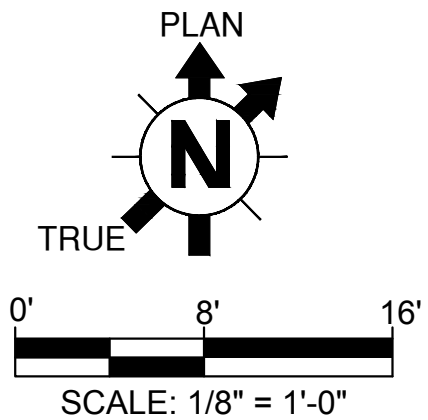
- 1. REFER TO ENLARGED BEDROOM FLOORPLAN 2/EL101 ON THIS SHEET FOR TYPICAL RESIDENT LIGHTING ROOM LAYOUT
- 2. FOR CIRCUIT DESIGNATION SEE SPECIFIC BEDROOM IN GENERAL FLOORPLAN 1/EL101
- 3. REFER TO THE SWITCHING SCHEDULE FOR TYPE OF SWITCH REQUIRED FOR EACH ROOM.
- 4. ALL NIGHT LIGHT AND EXIT SIGNS SHALL BE UNSWITCHED.
- 5. MOUNT LOW VOLTAGE RELAY POWER PACKS FOR LOW VOLTAGE SWITCHES ABOVE CEILING GRID AT ENTRY OF EACH ROOM
- 6. PROVIDE EMERGENCY EXIT LIGHTS AND FROG EYES WITH BATTERY BACKUP
- 7. PROVIDE DOUBLE GANG J-BOX FOR SCONCES TYPE "CS". DRIVER FOR THESE SCONCES REQUIRE 2 WIRES.
- 8. PROVIDE 4" OCTAGONAL ELECTRICAL J-BOX FOR ENTRY SCONCE TYPE "EE"
- 9. PROVIDE STANDARD J-BOX FOR LIGHTING FIXTURE.
- 10. REFER TO ENLARGED BEDROOM FLOORPLAN 2/EL101 ON THIS SHEET FOR TYPICAL REHAB LIGHTING ROOM LAYOUT
- 11. MOUNT EXTERIOR LIGHTING PHOTOCELL AT ROOF LINE. ORIENT FACING NORTH. PROVIDE 277V PHOTOCELL CONTROL (TORK 2000 SERIES OR EQUAL)

ABBREVIATIONS



- AFF - ABOVE FINISH FLOOR
- X BOF - BOTTOM OF FIXTURE (X IS MOUNTING HEIGHT FROM FINISH FLOOR)
- OC - ON CENTER

SWITCH SCHEDULE

SYMBOL	CIRCUIT	AREA CONTROLLED	FUNCTION	TYPE
BEDROOM SWITCHING				
gva	NORMAL	BEDROOM DOWNLIGHTS	DIMMING	SENSOR SWITCH 1P-DX
gvb	NORMAL	BEDROOM MEMORY SHELF BED	ON/OFF	SENSOR SWITCH 2P
gvo	EMERGENCY	OVER BED LIGHT FOR CLINICAL PURPOSES	ON/OFF	SENSOR SWITCH 2P
gvc	EMERGENCY	BEDROOM NIGHT LIGHT	ON/OFF	SENSOR SWITCH 2P
gvi	NORMAL	BATHROOM DOWNLIGHT	ON/OFF	SENSOR SWITCH 2P
gvv	NORMAL	BATHROOM VANITY LIGHT	ON/OFF	SENSOR SWITCH 2P
OVERALL SWITCHING				
g	NORMAL	STORAGE	ON/OFF	MAINTAINED TOGGLE SWITCH
gvo	EMERGENCY	MEDS 2X4 NURSE OFFICE 2X4	DIMMING	SENSOR SWITCH 1P-DX
gm	EMERGENCY	MEDICATION ROOM EMERGENCY LIGHT	ON/OFF	MAINTAINED TOGGLE SWITCH
g	NORMAL	STORAGE	ON/OFF	MAINTAINED TOGGLE SWITCH
gt	NORMAL	VISITOR TOILETS	ON/OFF	VACANCY SENSOR SWITCH
g	EMERGENCY	BASEMENT - MECHANICAL, ELEC, IT ROOMS	VACANCY SENSOR 60m. TIMER	VACANCY SENSOR SWITCH



CONSTRUCTION DOCUMENTS

		CONSULTANT:		CONSULTANT:		ARCHITECT/ENGINEERS:		Drawing Title 1ST FLOOR LIGHTING PLAN		Project Title COMMUNITY LIVING CENTER		Project Number 442-12-357		Office of Construction and Facilities Management	
						<div><div>11051 SOUTH PINES PEAK DRIVE #202 PARKER, COLORADO 80138 PH: 303-644-9922 WWW.AES-GRP.COM</div></div>				Building Number COWBOY					
RFI #5		21 APRIL 2017						Approved: Project Director		Location CHEYENNE, WYOMING		Drawing Number			
RFI #4		12 APRIL 2017						SYLVIE RUPP - CFM DIRECTOR				EL101			
RFI #3		31 MARCH 2017						FACILITIES/ENGINEERING				Dwg. of			
RFI #2		24 MARCH 2017						PHONE: 307-778-7550x7267		Date MARCH 2017		Checked SB		Drawn DKSO	
REQUEST FOR INFORMATION #1 (RFI #1)		16 MARCH 2017				FAX: 307-287-9725								 Department of Veterans Affairs	
Revisions:		Date													