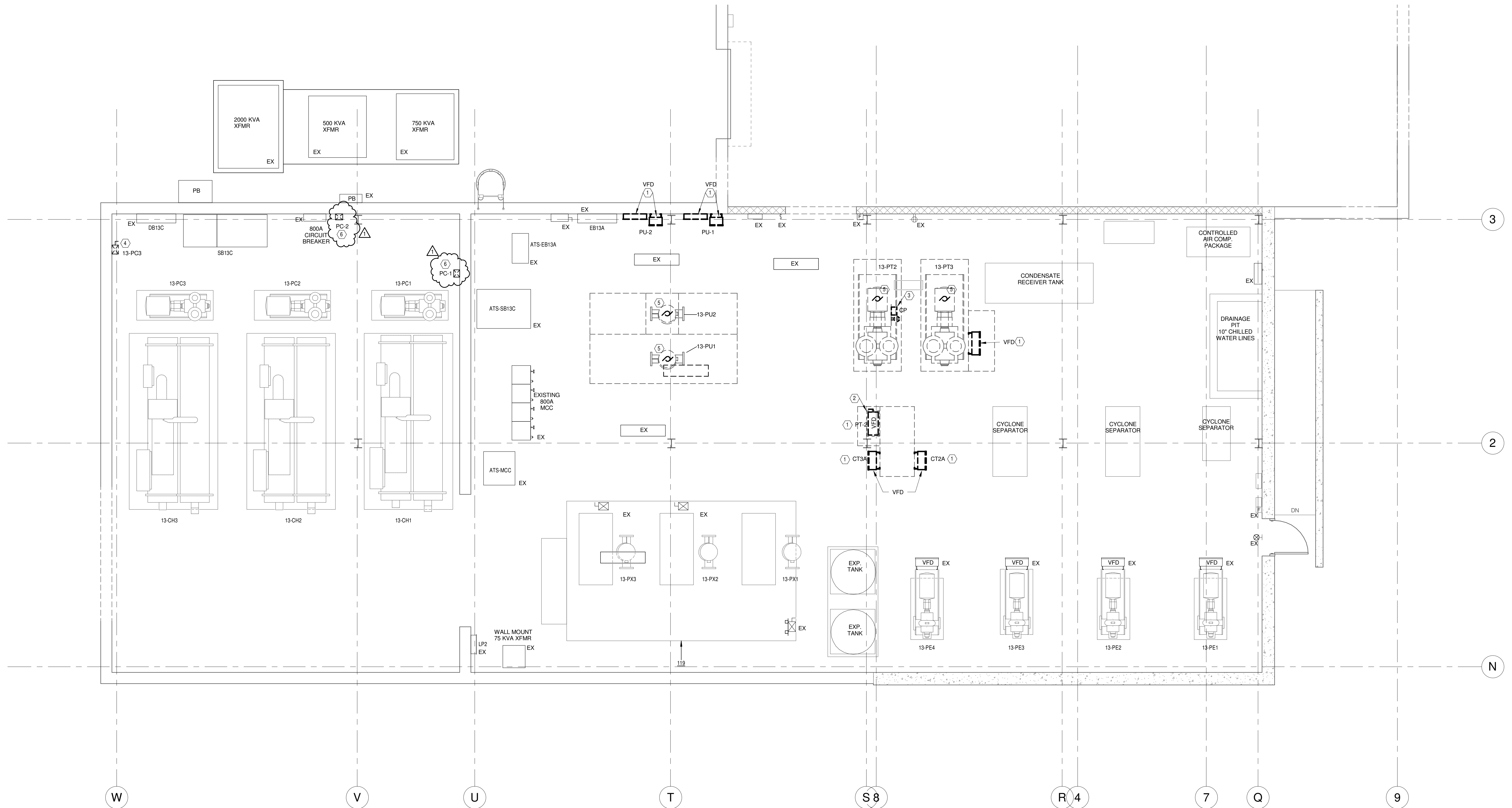


- NOTES**
- 1 REMOVE VFD/BYPASS CONTROLLER, METAL SUPPORT FRAME, ETC. AND FEEDER BACK TO SOURCE.
 - 2 REMOVE CONCRETE HOUSEKEEPING PAD.
 - 3 REMOVE CONTROL PANEL AND CIRCUITRY BACK TO RECEPTACLE ON ADJACENT WALL.
 - 4 REMOVE MAGNETIC STARTER AND REPLACE WITH VFD UNDER BASE BID. RELOCATE EXISTING MAGNETIC STARTER TO ACCOMMODATE NEW SWITCHBOARD UNDER DEDUCT ALTERNATE 1.
 - 5 PUMP TO BE REMOVED BY DIV. 23. DISCONNECT AND REMOVE FEEDER BACK TO SOURCE.
 - 6 REMOVE MAGNETIC STARTER AND REPLACE WITH VFD UNDER BASE BID. UNDER DEDUCT ALTERNATE 1, STARTER REMAINS (NO NEW VFD).

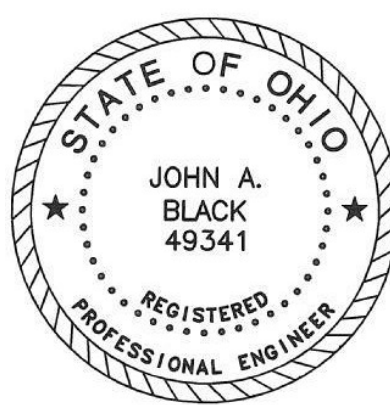


FIRST FLOOR PLAN - REMOVALS
SCALE: 1/4" = 1'-0"

35% REVIEW	9/19/2011
85% REVIEW	11/3/2011
100% REVIEW	12/14/2011
BID DOCUMENTS	12/30/2011
ADDENDUM 1	05/18/2012
Revisions	Date

CHAMPLIN ARCHITECTURE
THINK CREATE REALIZE
thinkchamplin.com
424 East Fourth Street
Cincinnati, OH 45202
T 513.241.4474 F 513.241.0081

Heapy Engineering
Mechanical Electrical Commissioning Technology
Nationally Recognized Leader in Sustainability / LEED
1400 W Dorothy Lane, Dayton OH 45409-1310
Ph: 937-224-0861 Fax: 937-224-5777 www.heapy.com
Heapy Project No.: 2011-04014 Firm License: 01528



Revised By:	
CH PROJECT NUMBER	117/4523

Drawing Title	FIRST FLOOR PLAN - REMOVALS
Approved: Division Chief	KEVIN HENDERSON
Approved: Service Director	TERRY BROTHERS

Project Title	NEW CHILLER & REPLACE COOLING TOWERS
Building Number	13
Location	Cincinnati, Ohio

Date	12-30-2011
Project No.	539-12-101
DRAWING NO.	13-E1
Dwg. Of	

