

PANEL EPH-O-24-1

SCALE: NONE



EXISTING 100/3 SPRING PANEL UL-26-2 TO BE REMOVED AND REPLACED WITH (3) 20/1 C.A.S

PANEL UL-26-1

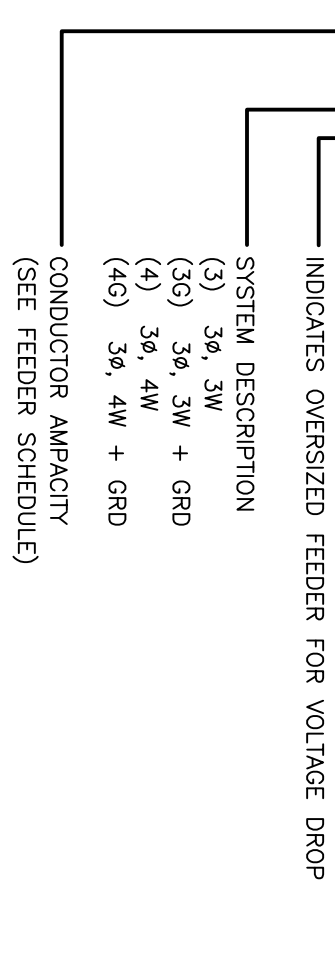
SCALE: NONE

PANEL EPH-O-24-1									
VOLTS 277/480 V		PHASE 3 Ø		# WIRE 4		W			
CIRCUIT BREAKER CONNECTED		SIZE (A)	P	A.L.C.	KVA	A.M.P.	DEMAND	A.M.P.	REMARKS
ERU-2600-1	100	3	62	15	62	7.5			
ACCU-2600-1	50	3	40	50	48	50			
ACCU-2600-2	50	3	40	50	48	50			
HUMIDIFIER H-1	50	3	29	35	29	35			
TOTAL (125%)									
TOTAL (125%)									
BUS RATING		1,200 A	SHORT CIRCUIT CURRENT RATING						
BUS BREAKER		1,200 A	A.L.C. 65,000 A						
TOTAL (CONNECTED)		189 KVA	TOTAL (DEMAND) 189 KVA						
TOTAL (125%)		227 A	TOTAL (125%) 227 A						
FED FROM EPH-307-2-4 / SYMBD-4		226 A	A.L.C. 65,000 A						

FEEDER SCHEDULE				
FEEDER AMPACITY	CONDUCTOR SIZE (kcmil)	CONDUIT SIZE	CONDUIT SIZE	
20	#12	#12	1/2"	1/2"
25	#10	#10	1/2"	1/2"
30	#10	#10	1/2"	1/2"
35	#8	#10	3/4"	3/4"
40	#8	#10	3/4"	3/4"
45	#6	#10	3/4"	1"
50	#6	#10	1"	1"
60	#4	#10	1"	1-1/4"
70	#3	#8	1-1/4"	1-1/4"
80	#3	#8	1-1/4"	1-1/4"
100	#2	#6	1-1/2"	2"
110	#1	#6	1-1/4"	1-1/2"
125	#1	#6	1-1/2"	2"
150	#1/0	#6	1-1/2"	2"
175	#2/0	#6	2"	2"
200	#3/0	#6	2"	2-1/2"
225	#4/0	#4	2"	2-1/2"
250	#250	#4	2-1/2"	3"
300	#350	#4	3"	3"
350	#500	#3	3"	3-1/2"
380	#500	#3	3"	3-1/2"
400	(2) # 3/0	(2) # 3	(2) 2"	(2) 2-1/2"
450	(2) # 4/0	(2) # 2	(2) 2"	(2) 2-1/2"
500	(2) # 250	(2) # 2	(2) 2-1/2"	(2) 3"
600	(2) # 350	(2) # 1	(2) 3"	(2) 3"
700	(2) # 500	(2) # 1/0	(2) 3"	(2) 3-1/2"
800	(2) # 600	(2) # 1/0	(2) 3-1/2"	(2) 4"
1000	(3) # 400	(3) # 2/0	(3) 3"	(3) 3-1/2"
1200	(3) # 600	(3) # 3/0	(3) 3-1/2"	(3) 4"
1600	(4) # 600	(4) # 4/0	(4) 3-1/2"	(4) 4"
2000	(5) # 600	(5) # 250	(5) 3-1/2"	(5) 4"
2500	(5) # 600	(5) # 350	(5) 3-1/2"	(5) 3-1/2"
3000	(6) # 600	(6) # 400	(6) 3"	(6) 4"
4000	(6) # 750	(6) # 500	(6) 3-1/2"	(6) 5"
5000	(10) # 750	(10) # 700	(10) 4"	(10) 5"
6000	(12) # 750	(12) # 800	(12) 4"	(12) 5"

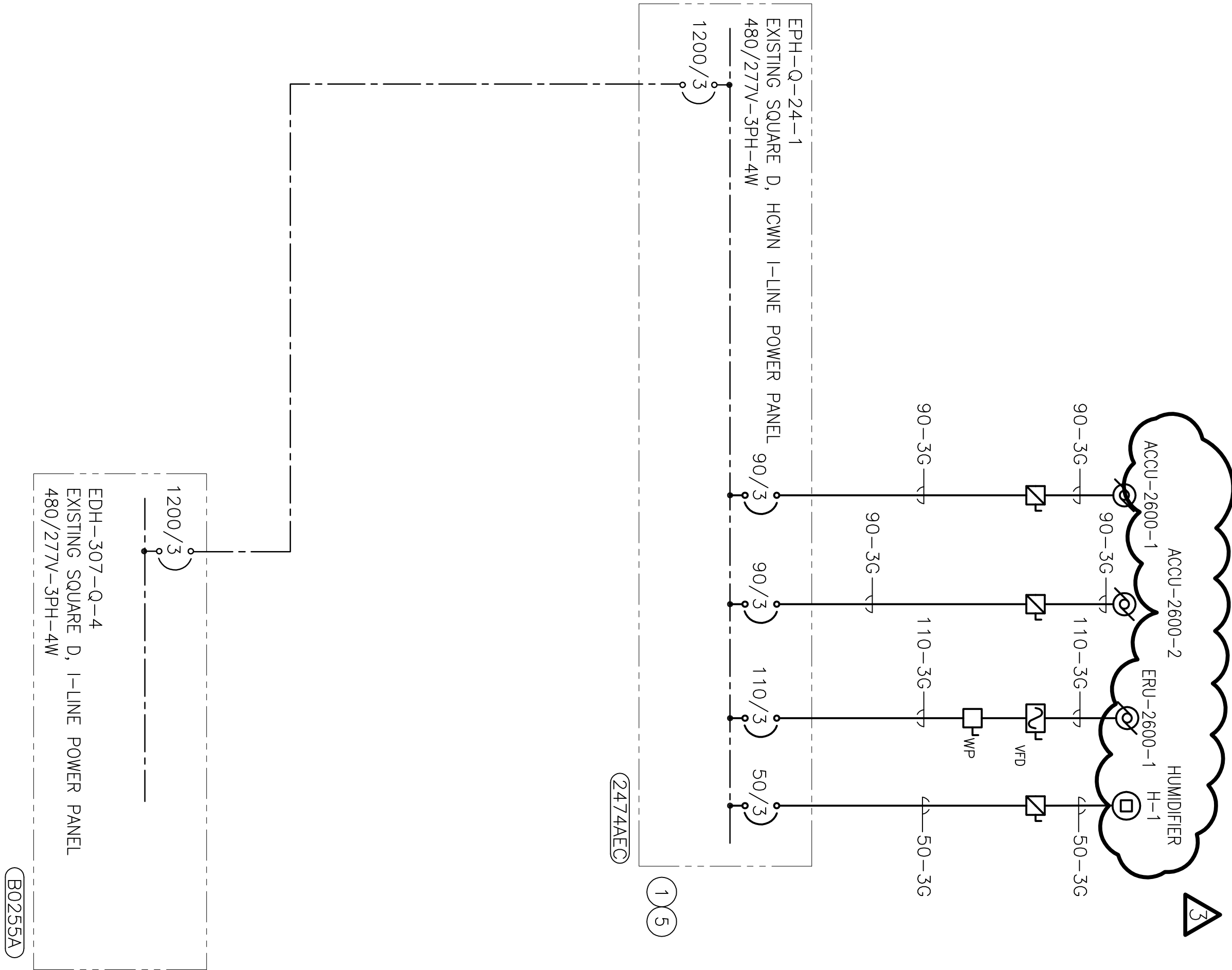
GENERAL NOTES:

- THE ABOVE FEEDER SCHEDULE IS A SCHEDULE OF TYPICAL FEEDERS AND SOME SIZES MAY NOT BE UTILIZED.
- A.L.C. CONDUCTOR AMPACITIES ARE BASED ON TABLE 310-16 OF THE NEC FOR COPPER CONDUCTOR TYPE THW/THHN.
- CONDUCTOR SIZES ARE BASED ON THE FEEDER BREAKER AMPACITIES. CERTAIN FEEDERS MAY BE SIZED FOR THE DERATING FACTORS REQUIRED BY CODE AND/OR ARE OVERSIZED FOR EXISTING FEEDER RESOLUTION.

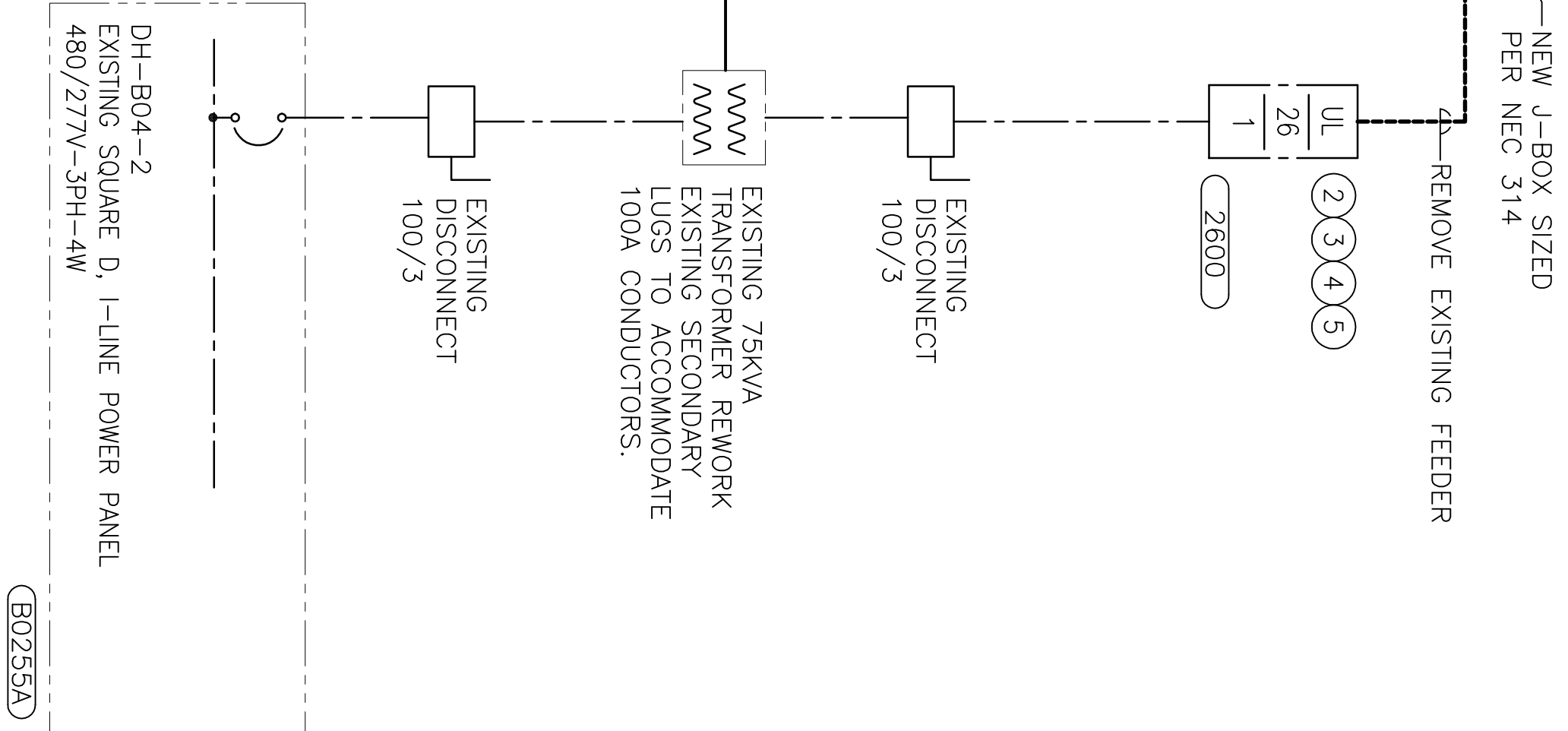


SHEET NOTES:

- NEW CIRCUIT BREAKERS IN PANEL EPH-O-24-1 SHALL HAVE LISTED INTERRUPTING RATING OF 65K.
- EXISTING BRANCH PANEL UL-26-1 IS CUTLER HAMMER PRL SERIES.
- PROVIDE (4) NEW CIRCUIT BREAKERS TO SERVE LOADS INDICATED ON SHEET EP100.
- PROVIDE (1) NEW CIRCUIT BREAKER TO SERVE LOAD INDICATED ON SHEET EP101.
- REVISE EXISTING PANEL BOARD SCHEDULES TO IDENTIFY NEW CIRCUIT BREAKERS AND ASSOCIATED LOADS.
- PROVIDE NEW J-BOX ABOVE ACCESSIBLE CEILING TO INTERCEPT AND EXTEND EXISTING SIZE PER NEC 314.
- EXISTING SOURCE FEEDER STRANG PANEL UL-26-2 TO BE INTERCEPTED AND EXTENDED BACK TO NEW SOURCE, DISCONNECT AND TRANSFORMER 1M2.
- VPD PROVIDED INTEGRAL TO ERU, EC SHALL PROVIDE SINGLE PHASE CONNECTION AT VPD.



(B0255A)

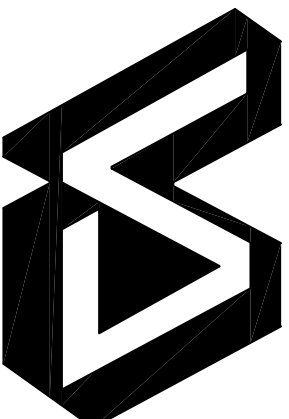


(B0255A)

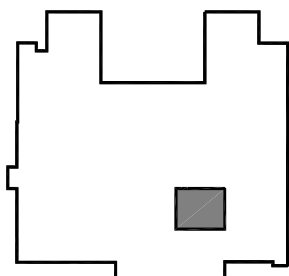
PARTIAL RISER DIAGRAM - POWER - ELECTRICAL

SCALE: NONE

Amendment #3	16 MAY 2012
Revision	Date

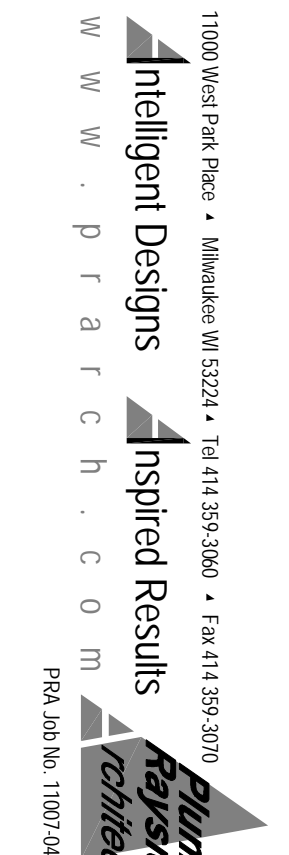
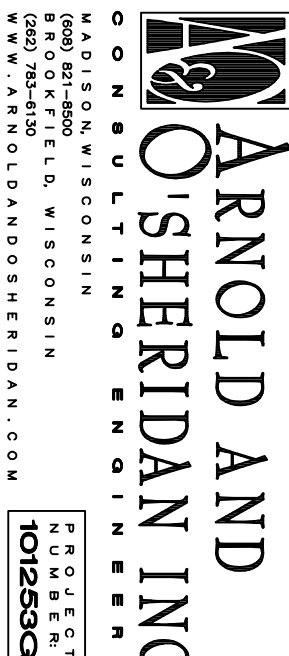


Dept. of Veterans Affairs
Medical Center
5000 W. National Avenue
Milwaukee, WI



KEY PLAN: →

ENGINEER:



ARCHITECT:

Approved Project Director

Location
VA Medical Center, Milwaukee, WI

Building Number
Building 111

Drawing Number
E600



FINAL BID SET
FULLY SPRINKLERED